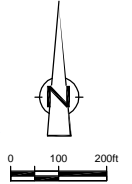
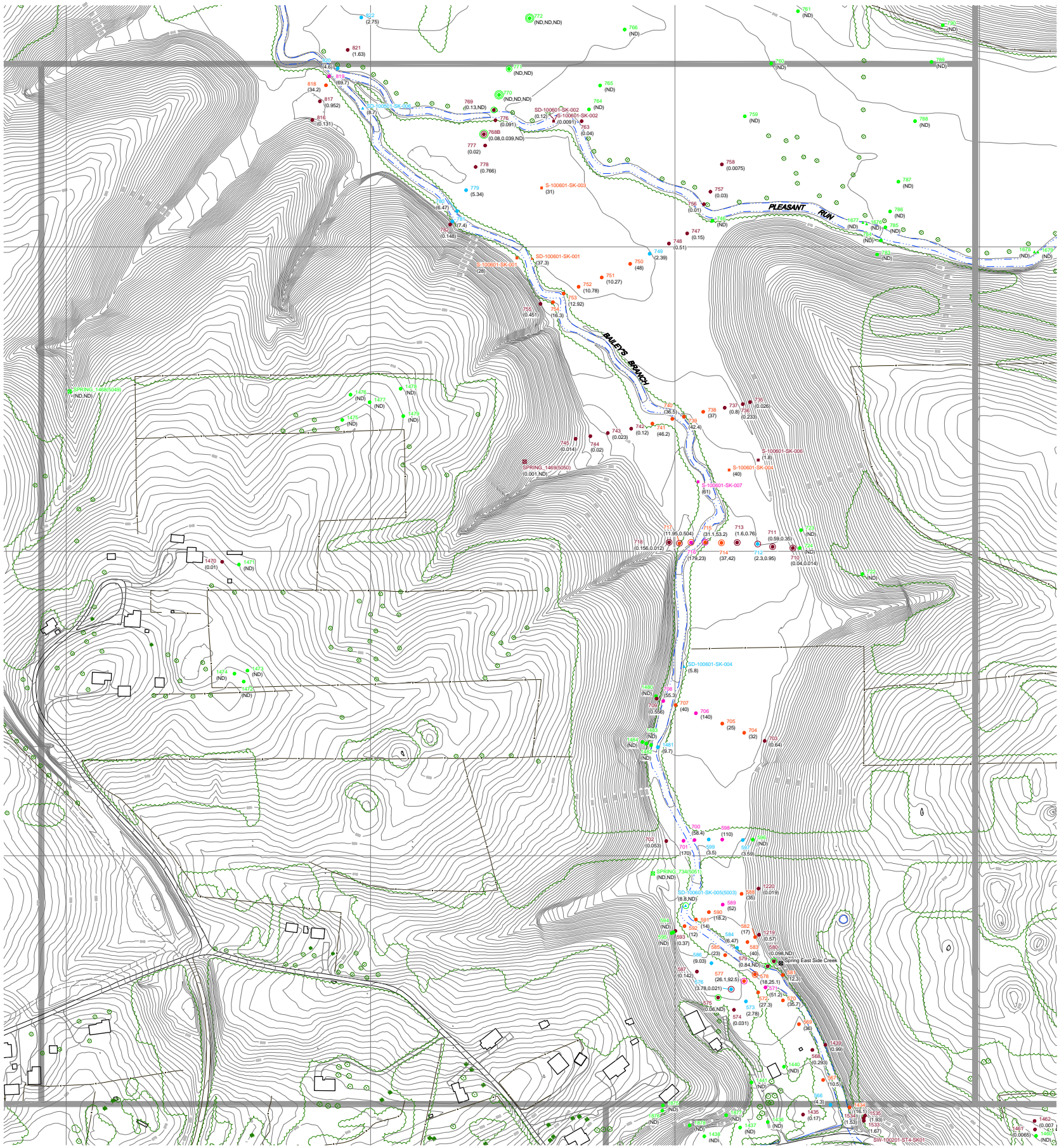


4A



CONTINUED ON DRAWING No. 5



CONTINUED ON DRAWING No. 4B

CONTINUED ON DRAWING No. 10

CONTINUED ON DRAWING No. 3B

NOTE:
VALIDATED DATA FOR SAMPLING ACTIVITY UP TO JUNE 11, 2002.
DRAWING SUBJECT TO REVISION.

LEGEND

- EXISTING GROUND SURFACE ELEVATION CONTOURS (feet AMSL)
- EXISTING VEGETATION
- EXISTING BUILDINGS
- FENCE LINE
- RAILROAD TRACKS
- DIRT ROADS
- ROADS / UNPAVED AREAS
- ROADS / PAVED AREAS
- APPROXIMATE GM PROPERTY BOUNDARY
- APPROXIMATE STUDY AREA BOUNDARY
- APPROXIMATE SURFACE WATER LOCATION

- 130 (263)
RED INDICATES SOIL SAMPLE RESULT EQUAL TO OR GREATER THAN 50 PPM (2002)
- 142 (12.6)
ORANGE INDICATES SOIL SAMPLE RESULT EQUAL TO OR GREATER THAN 10 PPM AND LESS THAN 50 PPM (2002)
- 141 (3.8)
BLUE INDICATES SOIL SAMPLE RESULT EQUAL TO OR GREATER THAN 2.2 PPM AND LESS THAN 10 PPM (2002)
- 140 (0.75)
BROWN INDICATES DETECTED SOIL SAMPLE RESULT LESS THAN 2.2 PPM (2002)
- 727 (ND)
GREEN INDICATES NO PCBs DETECTED AT SOIL SAMPLE LOCATION (2002)
- S-100001-SK-006 (1200)
SOIL SAMPLE LOCATION AND IDENTIFIER (OCTOBER 2001)
- 1041 (17.4, 10.85, 0.528)
TOTAL AROCLORS (PPM)
TOTAL AROCLORS AT SURFACE (PPM)
TOTAL AROCLORS AT SECOND DEPTH (PPM)
TOTAL AROCLORS AT THIRD DEPTH (PPM)
COLOR CORRESPONDS TO CONCENTRATION AT SURFACE
COLOR CORRESPONDS TO CONCENTRATION AT SECOND DEPTH
COLOR CORRESPONDS TO CONCENTRATION AT THIRD DEPTH

- DENOTES SURFACE SAMPLE (0 - 0.33 feet BGS)
- DENOTES SURFACE SAMPLE (0 - 0.33 feet BGS) AND ONE SAMPLE AT DEPTH (0.33 - 2 feet BGS MAXIMUM)
- DENOTES SURFACE SAMPLE (0 - 0.33 feet BGS) AND TWO SAMPLES AT DEPTH (0.33 - 2 feet BGS MAXIMUM)
- SEDIMENT SAMPLE IDENTIFICATION
- SURFACE WATER SAMPLE IDENTIFICATION
- TOTAL AROCLORS IN SURFACE WATER SAMPLE (PPM)
- TOTAL AROCLORS IN SEDIMENT SAMPLE (PPM)
- COLOR CORRESPONDS TO CONCENTRATION IN SEDIMENT SAMPLE
COLOR CORRESPONDS TO CONCENTRATION IN SURFACE WATER SAMPLE
- SD-100001-SK-004 (50)
SEDIMENT SAMPLE LOCATION AND RESULT
- SW-100001-ST1-SK-001 (0.0005)
SURFACE WATER SAMPLE LOCATION AND RESULT
- 3002 (5000)
VEGETATION SAMPLE LOCATION AND RESULT
- HIGH FLOW SAMPLE LOCATION AND RESULT

- SEEP_001 LOCATION OF OBSERVED SEEP
- SPRING_001 LOCATION OF OBSERVED SPRING
- SHEEN_001 LOCATION OF OBSERVED SHEEN
- 1305 (0.19) ROCK CHIP SAMPLE LOCATION AND RESULT
- 1210 (ND) WIPE SAMPLE LOCATION AND RESULT
- W-001 WELL LOCATION
- PROPERTY CORNER MONUMENT
- ND INDICATES NON-DETECT SAMPLE RESULT
- NS NOT SAMPLED

No.	Revision	Date	Initial

SCALE VERIFICATION

THIS BAR MEASURES 1" ON ORIGINAL. ADJUST SCALE ACCORDINGLY.

Approved _____

GM POWERTRAIN BEDFORD PLANT

STREAM INVESTIGATION SUMMARY

STREAM SAMPLE LOCATIONS

STUDY AREA 4 - 1 OF 2

CONESTOGA-ROVERS & ASSOCIATES

Source Reference:
BASE MAP COMPLETED BY AIR-LAND SURVEYS, FLINT, MI. APRIL 2001.

Project Manager: J.M.	Reviewed By: S.V.	Date: AUGUST 2002
Scale: AS SHOWN	Project N°: 13968-00	Report N°: PRES005
		Drawing N°: 4A