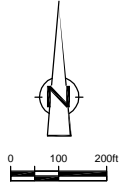
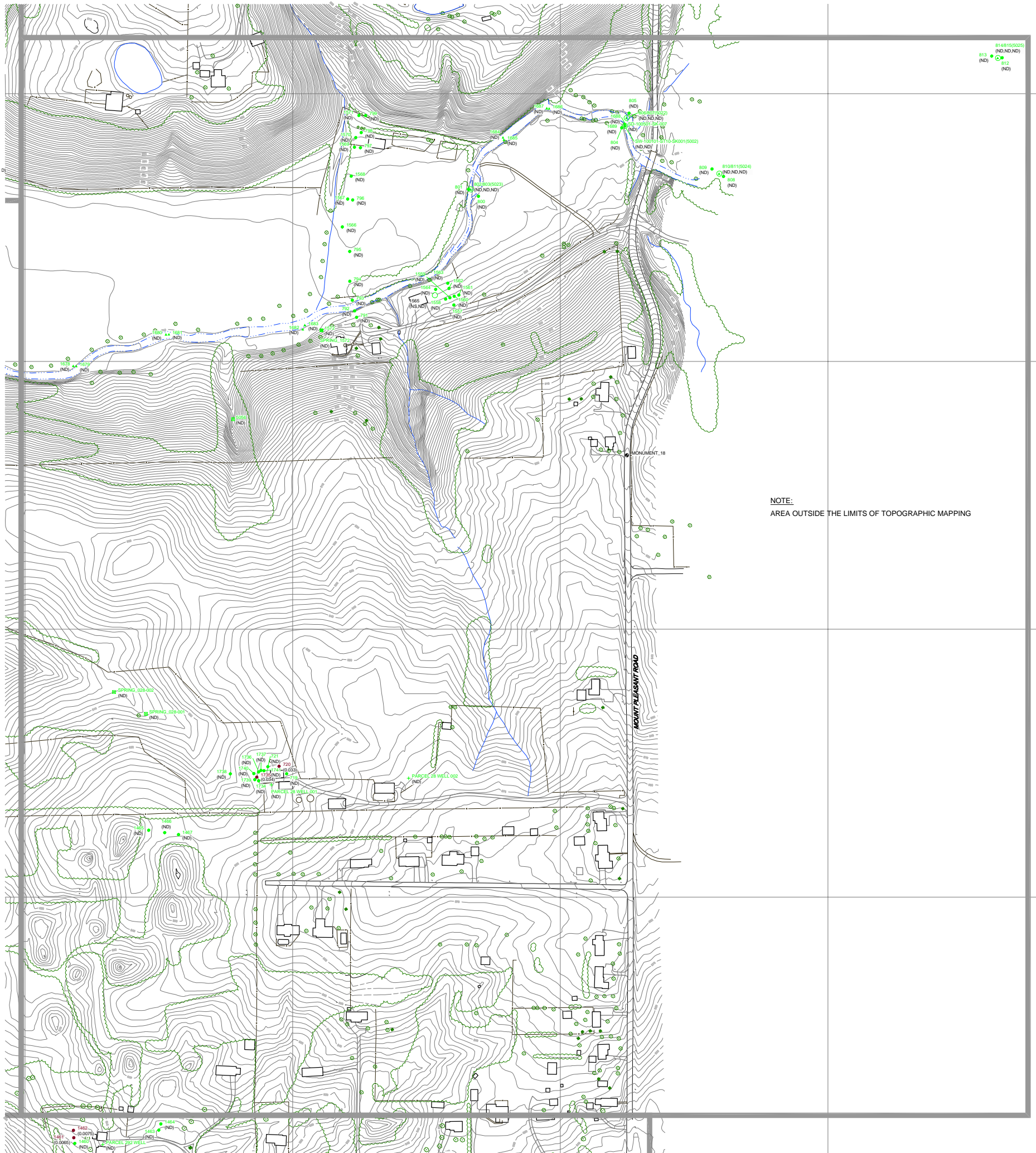


4B



CONTINUED ON DRAWING No. 5

CONTINUED ON DRAWING No. 4A



CONTINUED ON DRAWING No.3B

NOTE: VALIDATED DATA FOR SAMPLING ACTIVITY UP TO JUNE 11, 2002. DRAWING SUBJECT TO REVISION.

LEGEND

- EXISTING GROUND SURFACE ELEVATION CONTOURS (feet AMSL)
- EXISTING VEGETATION
- EXISTING BUILDINGS
- FENCE LINE
- RAILROAD TRACKS
- DIRT ROADS
- ROADS/UNPAVED AREAS
- ROADS/PAVED AREAS
- APPROXIMATE GM PROPERTY BOUNDARY
- APPROXIMATE STUDY AREA BOUNDARY
- APPROXIMATE SURFACE WATER LOCATION
- 130 (263) RED INDICATES SOIL SAMPLE RESULT EQUAL TO OR GREATER THAN 50 PPM (2002)
- 142 (12.6) ORANGE INDICATES SOIL SAMPLE RESULT EQUAL TO OR GREATER THAN 10 PPM AND LESS THAN 50 PPM (2002)
- 141 (3.8) BLUE INDICATES SOIL SAMPLE RESULT EQUAL TO OR GREATER THAN 2.2 PPM AND LESS THAN 10 PPM (2002)
- 140 (0.75) BROWN INDICATES DETECTED SOIL SAMPLE RESULT LESS THAN 2.2 PPM (2002)
- 147 (ND) GREEN INDICATES NO PCBs DETECTED AT SOIL SAMPLE LOCATION (2002)
- 148 (ND) SAMPLE LOCATION WITH NO DATA
- 149 (1200) SOIL SAMPLE LOCATION AND IDENTIFIER (OCTOBER 2001)
- 150 (17.4, 10.85, 0.528) TOTAL AROCLORS (PPM)
- TOTAL AROCLORS AT SURFACE (PPM)
- TOTAL AROCLORS AT SECOND DEPTH (PPM)
- TOTAL AROCLORS AT THIRD DEPTH (PPM)
- COLOR CORRESPONDS TO CONCENTRATION AT SURFACE
- COLOR CORRESPONDS TO CONCENTRATION AT SECOND DEPTH
- COLOR CORRESPONDS TO CONCENTRATION AT THIRD DEPTH
- DENOTES SURFACE SAMPLE (0 - 0.33 feet BGS)
- DENOTES SURFACE SAMPLE (0 - 0.33 feet BGS) AND ONE SAMPLE AT DEPTH (0.33 - 2 feet BGS MAXIMUM)
- DENOTES SURFACE SAMPLE (0 - 0.33 feet BGS) AND TWO SAMPLES AT DEPTH (0.33 - 2 feet BGS MAXIMUM)
- SEDIMENT SAMPLE IDENTIFICATION
- SURFACE WATER SAMPLE IDENTIFICATION
- TOTAL AROCLORS IN SURFACE WATER SAMPLE (PPM)
- TOTAL AROCLORS IN SEDIMENT SAMPLE (PPM)
- COLOR CORRESPONDS TO CONCENTRATION IN SEDIMENT SAMPLE
- COLOR CORRESPONDS TO CONCENTRATION IN SURFACE WATER SAMPLE
- SEDIMENT SAMPLE LOCATION AND RESULT
- SURFACE WATER SAMPLE LOCATION AND RESULT
- VEGETATION SAMPLE LOCATION AND RESULT
- HIGH FLOW SAMPLE LOCATION AND RESULT
- SEEP.001 LOCATION OF OBSERVED SEEP
- SPRING.001 LOCATION OF OBSERVED SPRING
- SHEEN.001 LOCATION OF OBSERVED SHEEN
- 1305 (0.19) ROCK CHIP SAMPLE LOCATION AND RESULT
- 1310 (ND) WIPE SAMPLE LOCATION AND RESULT
- WELL.001 WELL LOCATION
- PROPERTY CORNER MONUMENT
- ND INDICATES NON-DETECT SAMPLE RESULT
- NS NOT SAMPLED

No.	Revision	Date	Initial

SCALE VERIFICATION

THIS BAR MEASURES 1" ON ORIGINAL. ADJUST SCALE ACCORDINGLY.

Approved _____

**GM POWERTRAIN
BEDFORD PLANT**

STREAM INVESTIGATION SUMMARY

**STREAM SAMPLE LOCATIONS
STUDY AREA 4 - 2 OF 2**

CONESTOGA-ROVERS & ASSOCIATES

Source Reference:
BASE MAP COMPLETED BY AIR-LAND SURVEYS, FLINT, MI. APRIL 2001.

Project Manager: J.M.	Reviewed By: S.V.	Date: AUGUST 2002
Scale: AS SHOWN	Project N°: 13968-00	Report N°: PRES005
		Drawing N°: 4B