



GM POWERTRAIN BEDFORD FACILITY BEDFORD, INDIANA

RCRA CORRECTIVE ACTION/CERCLA REMOVAL ACTION

G M P O W E R T R A I N B E D F O R D P L A N T , B E D F O R D , I N D I A N A

Welcome to the 3rd Quarter 2009 Public Information Session October 8, 2009



- Facility located on 152.5 acres and is approximately 1,000,000 square feet of manufacturing footprint
- Approximately 500 employees



- GM Corporation filed for bankruptcy on June 1, 2009 under Chapter 11 of the US Bankruptcy Code
- Under Section 363 of Chapter 11, GM Corporation sold a substantial portion of its assets to a new company, GM Company (called a "363 sale")
- The Bedford Plant belongs to the new GM Company and continues to operate
- The majority of off-Site properties are still owned by the old GM Corporation, now called Motors Liquidation Company or MLC
- GM Company will continue the Bedford remediation project in cooperation with MLC

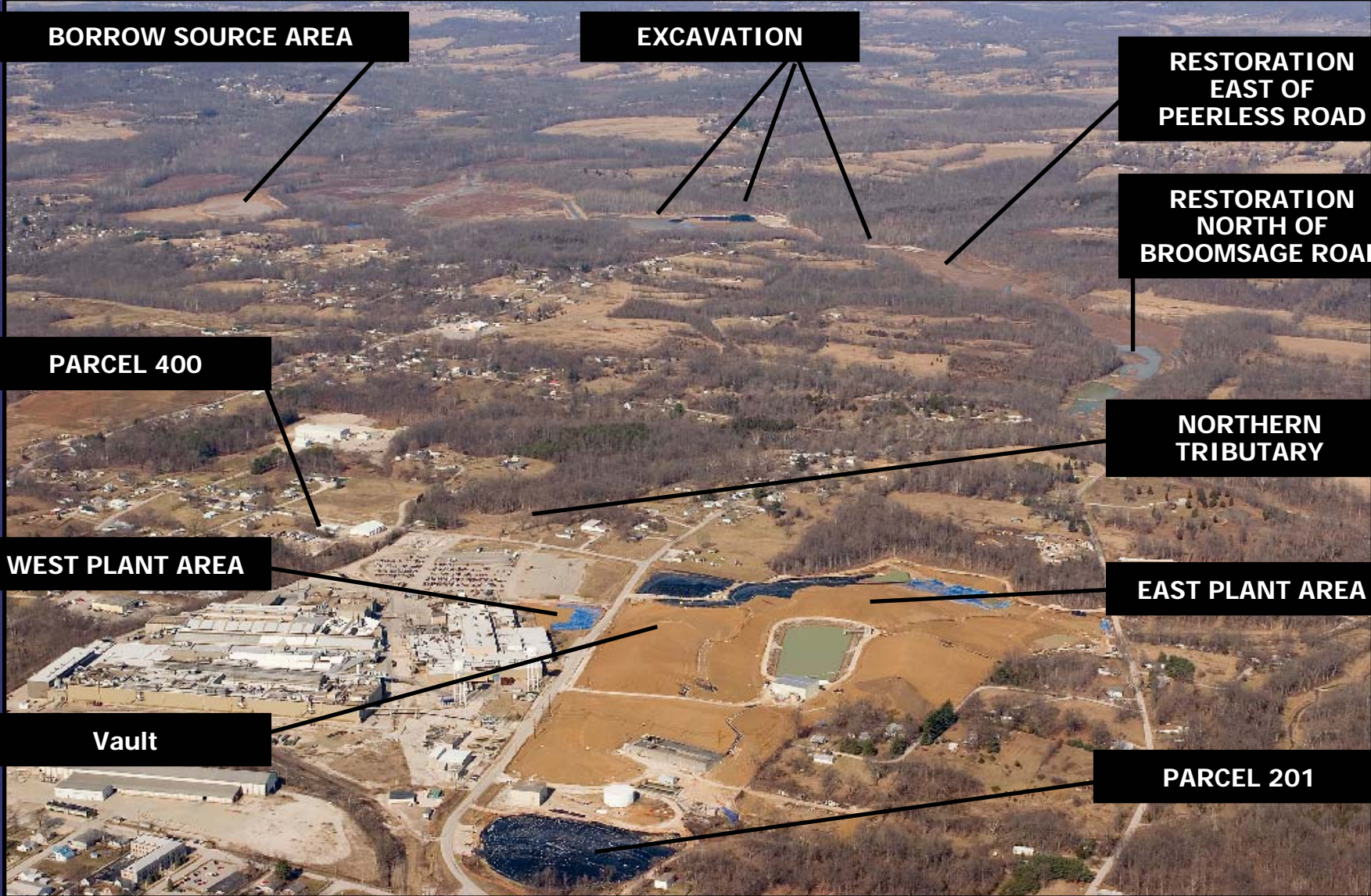


- Comprehensive Environmental Response, Compensation, and Liability Act (CERCLA) Removal Action (RA)
 - Bailey's Branch and Pleasant Run PCB cleanup of creek sediments and floodplain soil.
 - RA Elements:
 - Control of impacted springs and seeps along creeks; and
 - Removal of floodplain soil to 1.8 ppm and sediment to 1 ppm in the creek.
 - GM Company and MLC are working through an agreement to consolidate the remaining creek removal work with the work at the East Plant Area.
 - Will not meet previous schedule for creek work;
 - Will restart creek removal work in the spring of 2010;
 - GM anticipates that some soil excavation and transport will occur in 2009; and
 - Restoration of excavated areas will continue into 2011.



RCRA CORRECTIVE ACTION / CERCLA REMOVAL ACTION

GM POWERTRAIN REDFORD PLANT REDFORD INDIANA



BORROW SOURCE AREA

EXCAVATION

**RESTORATION
EAST OF
PEERLESS ROAD**

**RESTORATION
NORTH OF
BROOMSAGE ROAD**

PARCEL 400

**NORTHERN
TRIBUTARY**

WEST PLANT AREA

EAST PLANT AREA

Vault

PARCEL 201



REMOVAL ACTION STATUS

RCRA CORRECTIVE ACTION/CERCLA REMOVAL ACTION

GM POWERTRAIN BEDFORD PLANT, BEDFORD, INDIANA

DIVERSION
CHANNEL NO. 3

BORROW SOURCE
AREA AND HAUL
ROAD

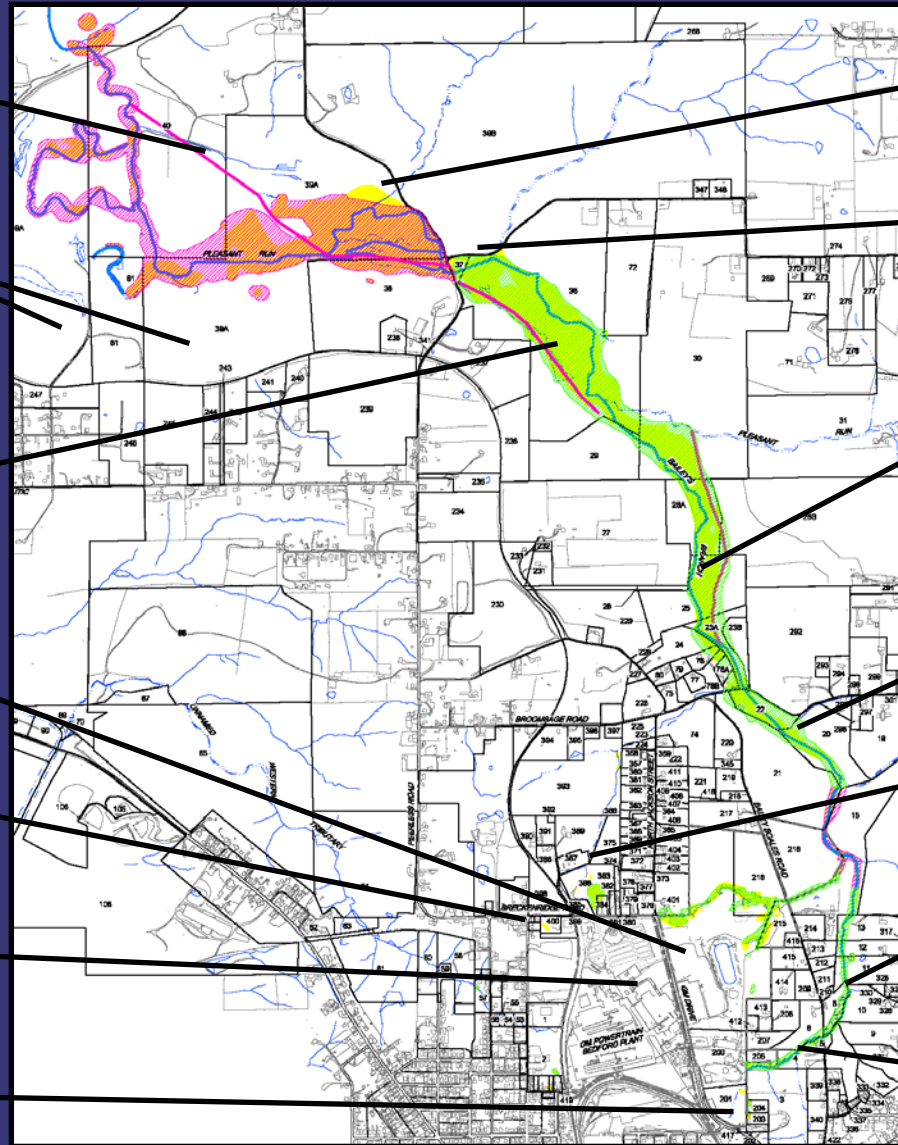
NEW RESTORATION
BETWEEN
BROOMSAGE ROAD
AND PEERLESS
ROAD

EAST PLANT AREA
VAULT

PARCEL 400 AREA

WEST PLANT AREA

PARCEL 201



STAGING AREA

EXCAVATION
UNDER FORMER
WATER
TREATMENT PLANT

RESTORATION
NORTH OF
BROOMSAGE ROAD

RESTORATION
SOUTH OF
BROOMSAGE ROAD

NORTHERN
TRIBUTARY

RESTORATION
EAST OF BAILEY
SCALES ROAD

RESTORATION
WEST OF BAILEY
SCALES ROAD



CREEK RESTORATION

RCRA CORRECTIVE ACTION/CERCLA REMOVAL ACTION

G M P O W E R T R A I N B E D F O R D P L A N T , B E D F O R D , I N D I A N A



Looking west and east from Bailey Scales Road



CREEK RESTORATION

RCRA CORRECTIVE ACTION/CERCLA REMOVAL ACTION

G M P O W E R T R A I N B E D F O R D P L A N T , B E D F O R D , I N D I A N A





CREEK RESTORATION

RCRA CORRECTIVE ACTION/CERCLA REMOVAL ACTION

G M P O W E R T R A I N B E D F O R D P L A N T , B E D F O R D , I N D I A N A



Looking north of Broomsage Road restoration



CREEK RESTORATION

RCRA CORRECTIVE ACTION/CERCLA REMOVAL ACTION

G M P O W E R T R A I N B E D F O R D P L A N T , B E D F O R D , I N D I A N A



Looking south of Broomsage Road restoration



CREEK RESTORATION

RCRA CORRECTIVE ACTION/CERCLA REMOVAL ACTION

GM POWERTRAIN BEDFORD PLANT, BEDFORD, INDIANA



Restoration North of Broomsage Road



CREEK RESTORATION STATUS

RCRA CORRECTIVE ACTION/CERCLA REMOVAL ACTION

GM POWERTRAIN BEDFORD PLANT, BEDFORD, INDIANA



Restoration east of Peerless Road



CREEK RESTORATION

RCRA CORRECTIVE ACTION/CERCLA REMOVAL ACTION

G M P O W E R T R A I N B E D F O R D P L A N T , B E D F O R D , I N D I A N A



Restoration east of Peerless Road



CREEK EXCAVATION STATUS

RCRA CORRECTIVE ACTION/CERCLA REMOVAL ACTION

GM POWERTRAIN BEDFORD PLANT, BEDFORD, INDIANA



Excavation west of Peerless Road

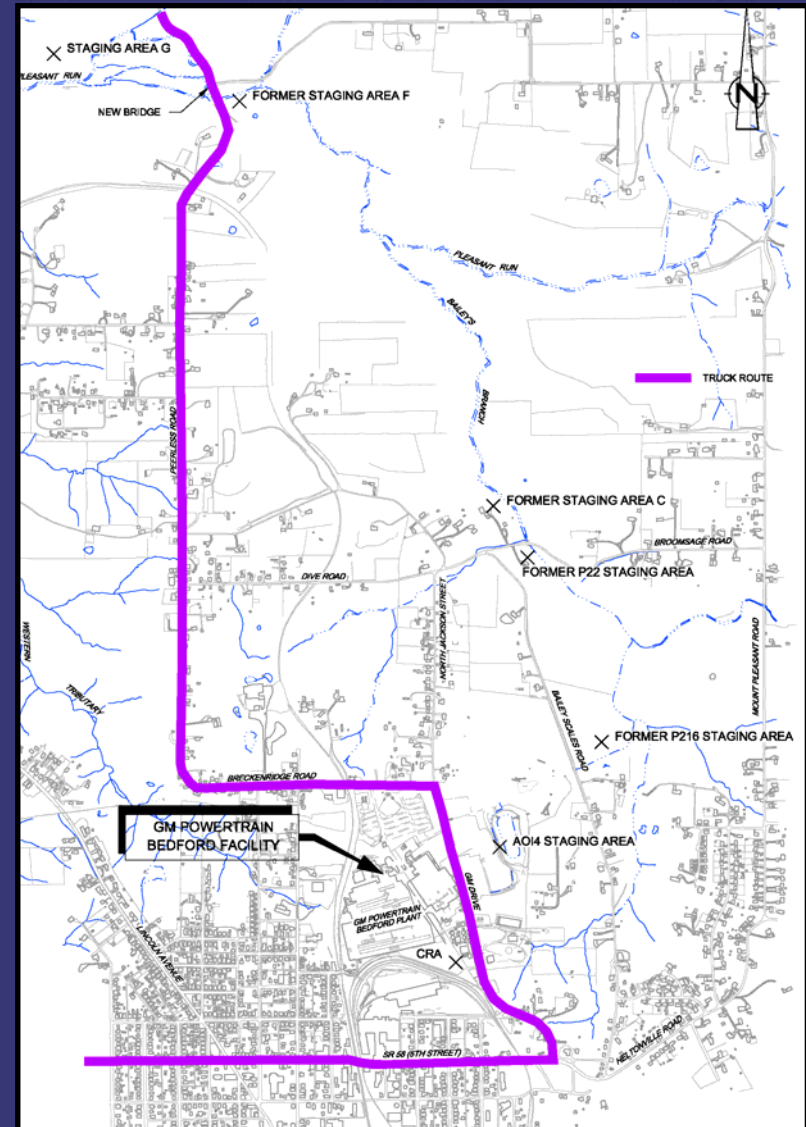


TRUCK TRAFFIC ROUTES

RCRA CORRECTIVE ACTION/CERCLA REMOVAL ACTION

GM POWERTRAIN BEDFORD PLANT, BEDFORD, INDIANA

- GM anticipates that there will be a short period of increased traffic this year.
- There will be increased road traffic when trucking resumes next year.
- GM will be patching/paving roads as needed and as weather permits.
- CRA will continuously monitor safety of truckers.
- At the end of truck traffic, GM will be resurfacing/repairing the last stretches of road used by the project, where needed.
- Truck Traffic Issues:
Katie Kamm - (812) 277-8954



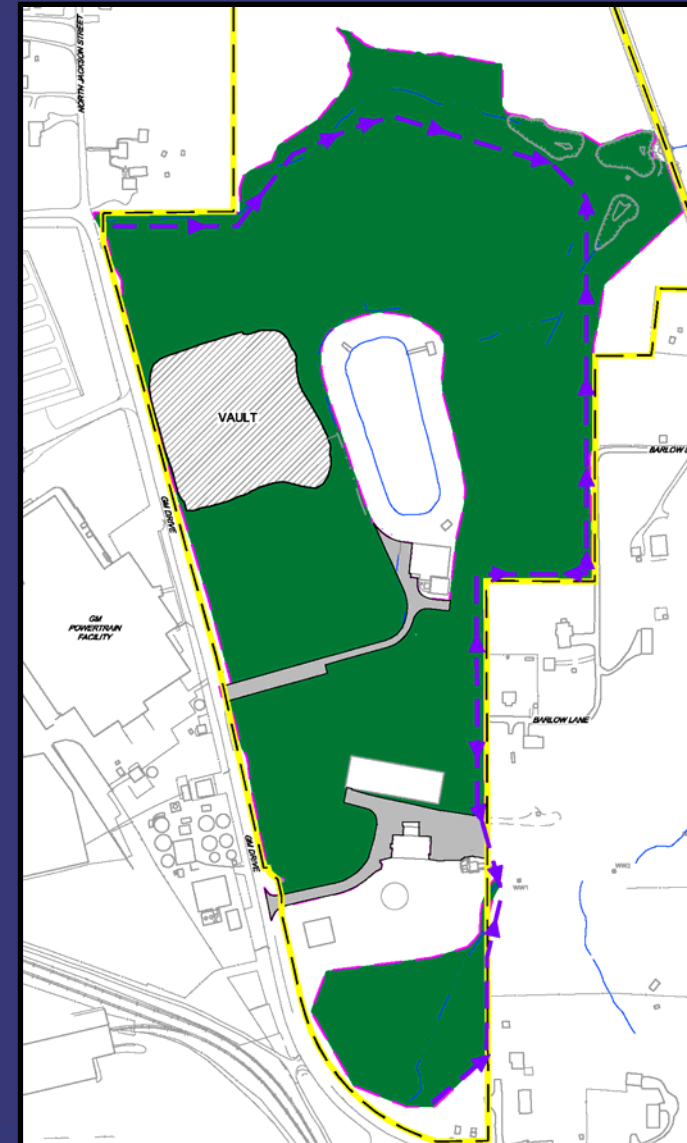


- RCRA Corrective Action
 - Conducted under a performance-based agreement with the U.S. EPA Region V. The agreement was signed on March 20, 2001 and amended October 1, 2002, March 29, 2008, and May 9, 2008
 - Continuing to perform groundwater testing
 - Implementing Interim Measures
 - East Plant Area
 - West Plant Area



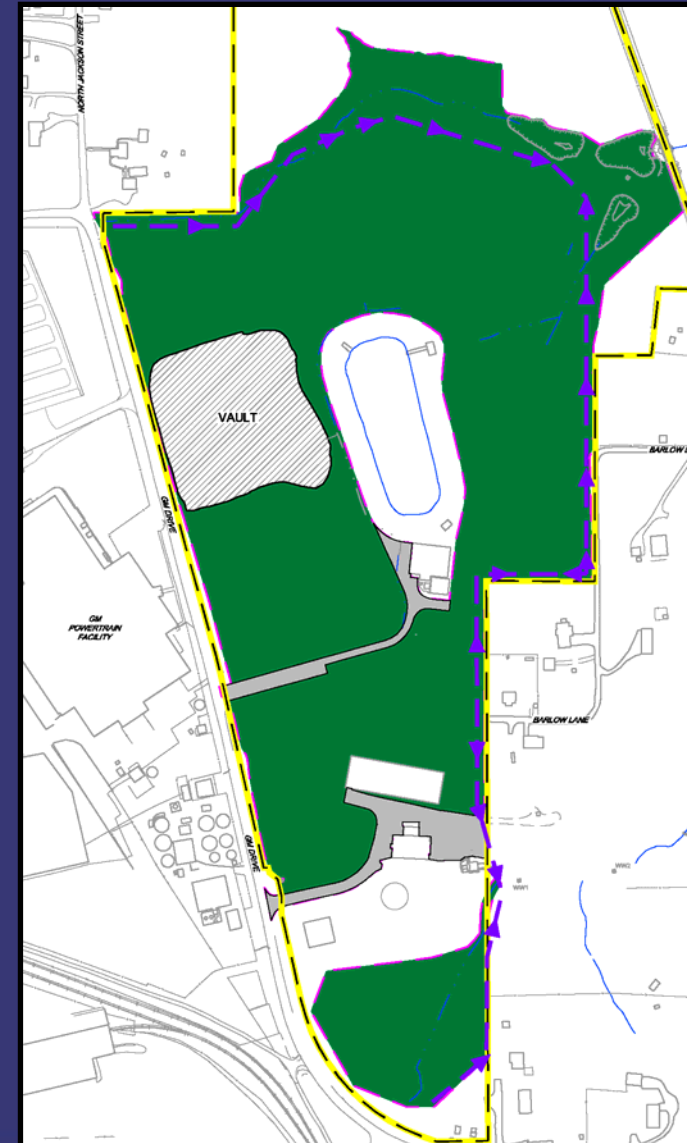
East Plant Area Interim Measure

- Re-use of low PCB Removal Action soil
 - ongoing
- Select soil removal
 - >50 PPM removal complete in the East Plant Area and placed into the Vault
- >50 PPM Landfill Vault
 - Filling of the Vault is complete and Vault cover is almost complete
 - Temporary cover protecting north section and will be replaced with permanent liner



East Plant Area Interim Measure

- Cover System
 - Delayed while finalizing agreement with MLC
 - GM anticipates that soil placement/hauling will resume for a short period in 2009
 - Majority of remaining soil placement/hauling will occur in 2010
 - Some areas still need creek soil as subgrade
 - Some areas need one or more of the cover layers
 - Any area not already covered by permanent liner currently has a temporary liner
- Perimeter Groundwater Collection System
 - Interim groundwater collection ongoing
- AOI 8 Collection System
 - More testing upcoming and the design to be finalized
- Long-term maintenance and monitoring
 - Following construction





EAST PLANT AREA

RCRA CORRECTIVE ACTION/CERCLA REMOVAL ACTION

GM POWERTRAIN BEDFORD PLANT, BEDFORD, INDIANA





WEST PLANT AREA

RCRA CORRECTIVE ACTION/CERCLA REMOVAL ACTION

GM POWERTRAIN BEDFORD PLANT, BEDFORD, INDIANA

- The former excavation in front of the plant will have a permanent vegetative and asphalt cover placed over top.





PARCEL 400

RCRA CORRECTIVE ACTION/CERCLA REMOVAL ACTION

G M P O W E R T R A I N B E D F O R D P L A N T , B E D F O R D , I N D I A N A





UPCOMING RCRA ACTIVITIES

RCRA CORRECTIVE ACTION/CERCLA REMOVAL ACTION

G M P O W E R T R A I N B E D F O R D P L A N T , B E D F O R D , I N D I A N A

UPCOMING ACTIVITIES FOR FALL 2009

- GM anticipates that excavation and transport of soil from the creek area near the Peerless Road bridge to the East Plant Area will resume for a short period of time

UPCOMING ACTIVITIES FOR SPRING 2010

- Truck transport of soil from the Peerless Road Bridge to the East Plant Area
- Continuance to work on the East Plant Area Cover System
- Continue RFI groundwater monitoring
- Continue road repair work, as needed



COMMUNITY RELATIONS ACTIVITIES

RCRA CORRECTIVE ACTION/CERCLA REMOVAL ACTION

G M P O W E R T R A I N B E D F O R D P L A N T , B E D F O R D , I N D I A N A

- Community meetings are held on a quarterly basis.
 - Presentations have been and will continue to be posted to the website.
 - People can always come to the field trailer and talk one-on-one.
- Next meetings will be held on December 9, and 10, 2009
- CLP Meetings to be held on October 9, and December 11, 2009
- Communication should now be routed through Katie Kamm



COMMUNITY RELATIONS ACTIVITIES

RCRA CORRECTIVE ACTION/CERCLA REMOVAL ACTION

G M P O W E R T R A I N B E D F O R D P L A N T , B E D F O R D , I N D I A N A

- Project website at:
<http://www.BedfordPowertrainCorrectiveAction.com>
- Quarterly Community Meetings are available on the website
- Public Information Repository (GM Plant) currently by appointment with Katie and repository publications are also available on the project website
- Community Liaison Panel (CLP) – members listed in minutes on website
- Periodic information sessions
- Periodic Project Fact Sheets (twenty-five issued to date)
- Project Questions or Truck Traffic Issues contact Katie Kamm:
(812) 277-8954