



GM POWERTRAIN BEDFORD FACILITY BEDFORD, INDIANA

RCRA CORRECTIVE ACTION/CERCLA REMOVAL ACTION

G M P O W E R T R A I N B E D F O R D P L A N T , B E D F O R D , I N D I A N A

Welcome to the 4th Quarter 2009 Public Information Session December 10, 2009



- Facility located on 152.5 acres and is approximately 1,000,000 square feet of manufacturing footprint
- Approximately 500 employees



- GM Corporation filed for bankruptcy on June 1, 2009 under Chapter 11 of the US Bankruptcy Code
- Under Section 363 of Chapter 11, GM Corporation sold a substantial portion of its assets to a new company, GM LLC (called a "363 sale")
- The Bedford Plant belongs to the new company, GM LLC, and continues to operate
- A majority of off-Site properties are still owned by the old GM Corporation, now called Motors Liquidation Company or MLC
- GM LLC will continue the Bedford remediation project in cooperation with MLC

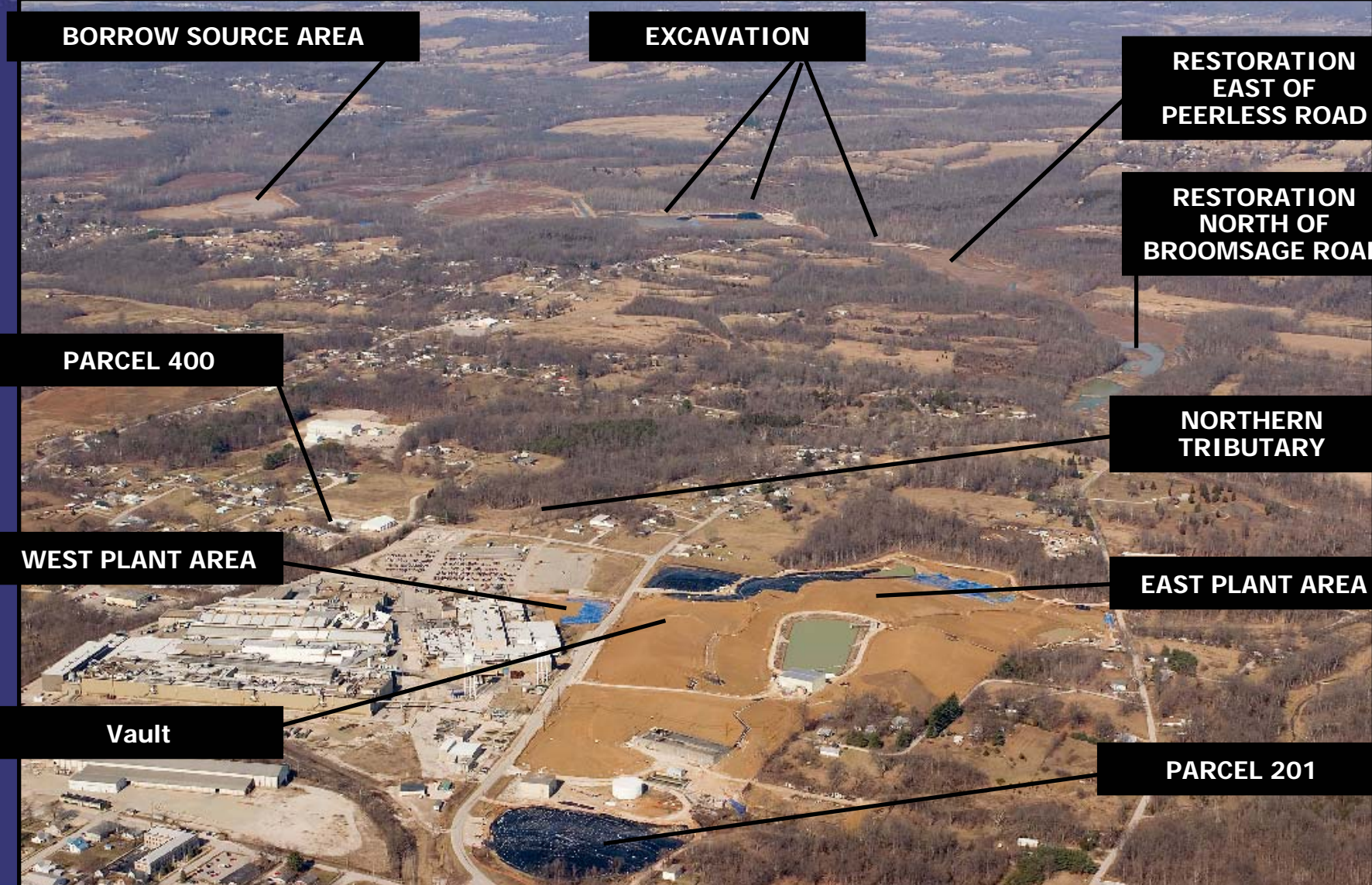


- Comprehensive Environmental Response, Compensation, and Liability Act (CERCLA) Removal Action (RA)
 - Bailey's Branch and Pleasant Run PCB cleanup of creek sediments and floodplain soil.
 - RA Elements:
 - Control of impacted springs and seeps along creeks; and
 - Removal of floodplain soil to 1.8 ppm and sediment to 1 ppm in the creek.
 - GM LLC and MLC are working through an agreement to consolidate the remaining creek removal work with the work at the East Plant Area.
 - Will not meet previous schedule for creek work;
 - Will restart majority of creek removal work remaining in the spring of 2010;
 - GM LLC will complete some soil excavation and transportation starting in December/January; and
 - Restoration of excavated areas will continue into 2011.



RCRA CORRECTIVE ACTION / CERCLA REMOVAL ACTION

GM POWERTRAIN REDFORD PLANT REDFORD INDIANA



BORROW SOURCE AREA

EXCAVATION

**RESTORATION
EAST OF
PEERLESS ROAD**

**RESTORATION
NORTH OF
BROOMSAGE ROAD**

PARCEL 400

**NORTHERN
TRIBUTARY**

WEST PLANT AREA

EAST PLANT AREA

Vault

PARCEL 201



REMOVAL ACTION STATUS

RCRA CORRECTIVE ACTION/CERCLA REMOVAL ACTION

GM POWERTRAIN BEDFORD PLANT, BEDFORD, INDIANA

**DIVERSION
CHANNEL NO. 3**

**BORROW SOURCE
AREA AND HAUL
ROAD**

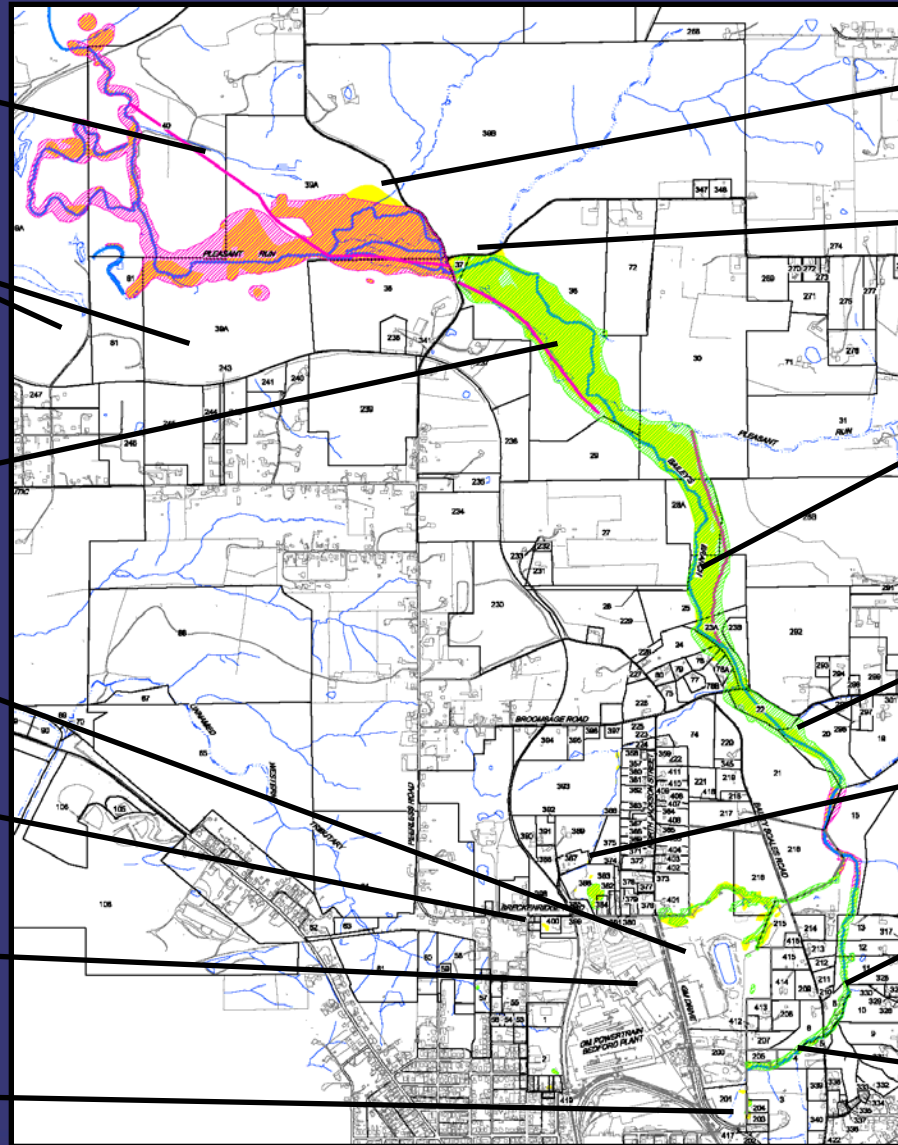
**NEW RESTORATION
BETWEEN
BROOMSAGE ROAD
AND PEERLESS
ROAD**

**EAST PLANT AREA
VAULT**

PARCEL 400 AREA

WEST PLANT AREA

PARCEL 201



STAGING AREA

**EXCAVATION
UNDER FORMER
WATER
TREATMENT PLANT**

**RESTORATION
NORTH OF
BROOMSAGE ROAD**

**RESTORATION
SOUTH OF
BROOMSAGE ROAD**

**NORTHERN
TRIBUTARY**

**RESTORATION
EAST OF BAILEY
SCALES ROAD**

**RESTORATION
WEST OF BAILEY
SCALES ROAD**



CREEK RESTORATION

RCRA CORRECTIVE ACTION/CERCLA REMOVAL ACTION

G M P O W E R T R A I N B E D F O R D P L A N T , B E D F O R D , I N D I A N A



Looking west and east from Bailey Scales Road



CREEK RESTORATION

RCRA CORRECTIVE ACTION / CERCLA REMOVAL ACTION

G M P O W E R T R A I N B E D F O R D P L A N T , B E D F O R D , I N D I A N A



Looking south of Broomsage Road restoration



CREEK RESTORATION

RCRA CORRECTIVE ACTION/CERCLA REMOVAL ACTION

GM POWERTRAIN BEDFORD PLANT, BEDFORD, INDIANA



Restoration North of Broomsage Road



CREEK RESTORATION

RCRA CORRECTIVE ACTION/CERCLA REMOVAL ACTION

G M P O W E R T R A I N B E D F O R D P L A N T , B E D F O R D , I N D I A N A



Looking north of Broomsage Road restoration



CREEK RESTORATION STATUS

RCRA CORRECTIVE ACTION/CERCLA REMOVAL ACTION

GM POWERTRAIN BEDFORD PLANT, BEDFORD, INDIANA



Restoration east of Peerless Road



CREEK RESTORATION

RCRA CORRECTIVE ACTION/CERCLA REMOVAL ACTION

G M P O W E R T R A I N B E D F O R D P L A N T , B E D F O R D , I N D I A N A



Restoration east of Peerless Road



CREEK EXCAVATION STATUS

RCRA CORRECTIVE ACTION/CERCLA REMOVAL ACTION

GM POWERTRAIN BEDFORD PLANT, BEDFORD, INDIANA



Excavation and soil pile remaining west of Peerless Road



CREEK EXCAVATION STATUS

RCRA CORRECTIVE ACTION/CERCLA REMOVAL ACTION

GM POWERTRAIN BEDFORD PLANT, BEDFORD, INDIANA



Excavation west of Peerless Road

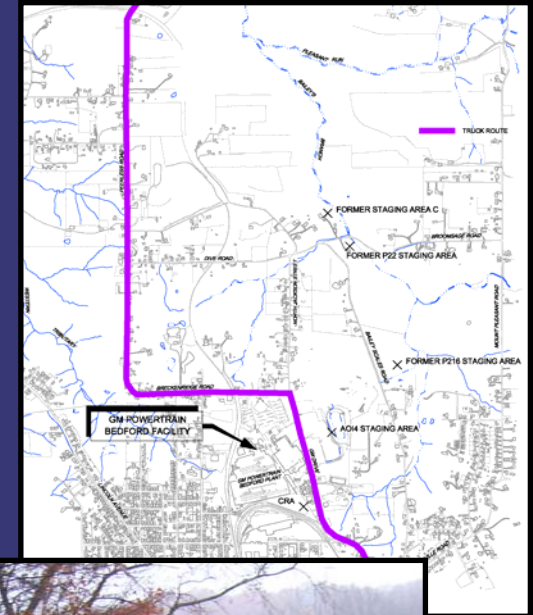


TRUCK TRAFFIC ROUTES

RCRA CORRECTIVE ACTION/CERCLA REMOVAL ACTION

GM POWERTRAIN BEDFORD PLANT, BEDFORD, INDIANA

- GM anticipates that there will be a short period of increased traffic in December.
- There will be increased road traffic when trucking resumes next year.
- GM will be patching/paving roads as needed and as weather permits.
- CRA will continuously monitor safety of truckers.
- At the end of truck traffic, GM will be resurfacing/repairing the last stretches of road used by the project, where needed.
- Truck Traffic Issues:
Katie Kamm - (812) 277-8954





- RCRA Corrective Action

- Conducted under a performance-based agreement with the U.S. EPA Region V. The agreement was signed on March 20, 2001 and amended October 1, 2002, March 29, 2008, and May 9, 2008
- Continuing to perform groundwater testing
- Implementing Interim Measures
 - East Plant Area
 - West Plant Area



EAST PLANT AREA

RCRA CORRECTIVE ACTION/CERCLA REMOVAL ACTION

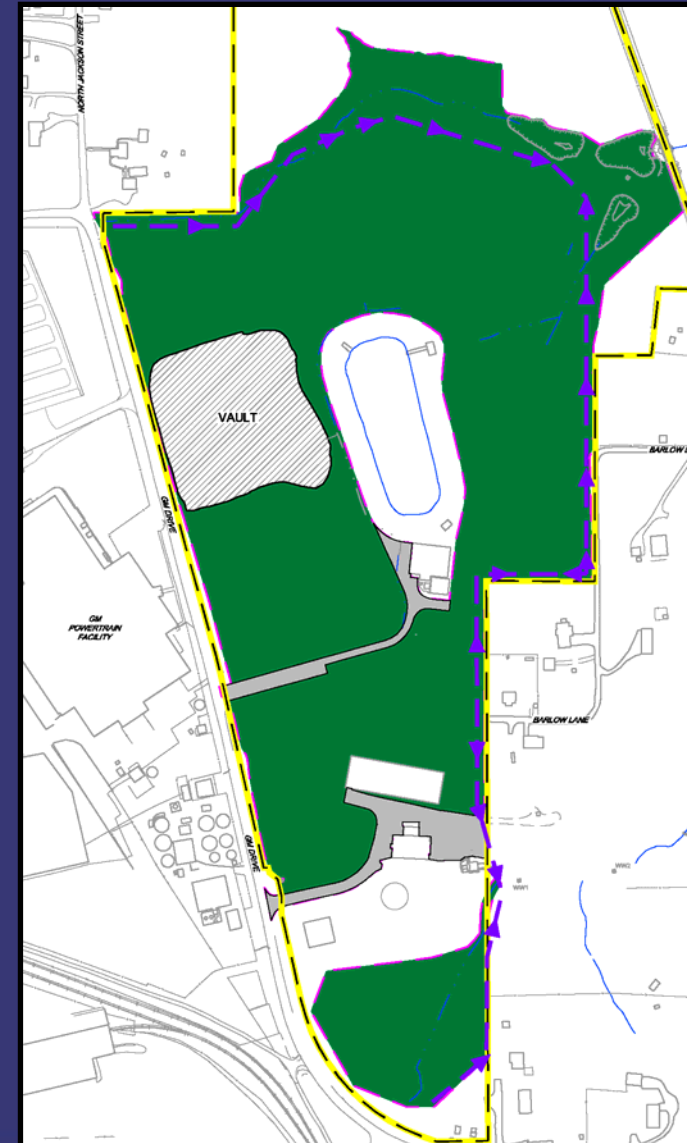
GM POWERTRAIN BEDFORD PLANT, BEDFORD, INDIANA





East Plant Area Interim Measure

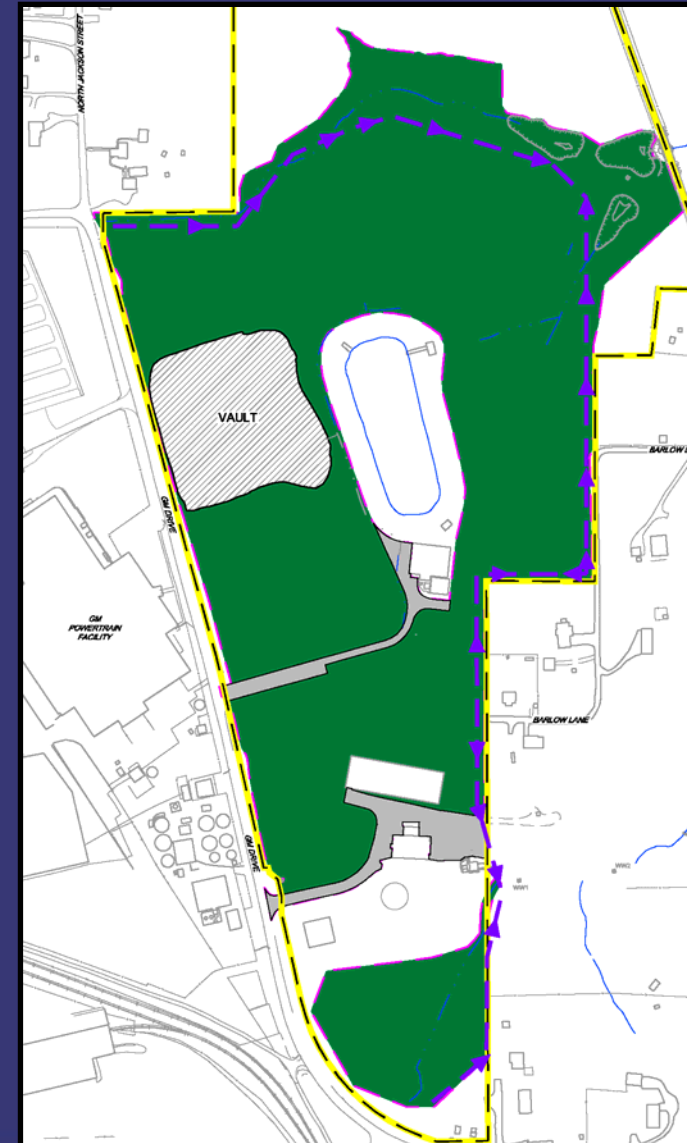
- Re-use of low PCB Removal Action soil
 - ongoing
- Select soil removal
 - >50 PPM removal complete in the East Plant Area and placed into the Vault
- >50 PPM Landfill Vault
 - Filling of the Vault is complete and Vault cover is almost complete
 - Permanent liner on the north section nearly completed.





East Plant Area Interim Measure

- Cover System
 - Delayed while finalizing agreement with MLC
 - Continued working on Parcel 201 section
 - Majority of remaining soil placement/hauling will occur in 2010
 - Some areas still need creek soil as subgrade
 - Some areas need one or more of the cover layers
 - Any area not already covered by permanent liner currently has a temporary liner
- Perimeter Groundwater Collection System
 - Interim groundwater collection ongoing
- AOI 8 Collection System
 - More testing upcoming and the design to be finalized
- Long-term maintenance and monitoring
 - Following construction





EAST PLANT AREA

RCRA CORRECTIVE ACTION/CERCLA REMOVAL ACTION

GM POWERTRAIN BEDFORD PLANT, BEDFORD, INDIANA



Moving grading fill in the East Plant Area to Parcel 201



EAST PLANT AREA

RCRA CORRECTIVE ACTION/CERCLA REMOVAL ACTION

GM POWERTRAIN BEDFORD PLANT, BEDFORD, INDIANA



Parcel 201 soil grading off of GM Drive

- The former excavation in front of the plant will have a permanent vegetative and asphalt cover placed over top.





PARCEL 400

RCRA CORRECTIVE ACTION/CERCLA REMOVAL ACTION

G M P O W E R T R A I N B E D F O R D P L A N T , B E D F O R D , I N D I A N A





UPCOMING RCRA ACTIVITIES

RCRA CORRECTIVE ACTION/CERCLA REMOVAL ACTION

G M P O W E R T R A I N B E D F O R D P L A N T , B E D F O R D , I N D I A N A

UPCOMING ACTIVITIES FOR REMAINDER OF 2009

- GM anticipates that excavation and transport of soil from the creek area near the Peerless Road bridge to the East Plant Area will resume for a short period of time

UPCOMING ACTIVITIES FOR SPRING 2010

- Truck transport of soil from the Peerless Road Bridge to the East Plant Area
- Continue to work on the East Plant Area Cover System
- Continue RFI groundwater monitoring
- Continue road repair work, as needed



COMMUNITY RELATIONS ACTIVITIES

RCRA CORRECTIVE ACTION/CERCLA REMOVAL ACTION

G M P O W E R T R A I N B E D F O R D P L A N T , B E D F O R D , I N D I A N A

- Community meetings are held on a quarterly basis.
 - Presentations have been and will continue to be posted to the website.
 - People can always come to the field trailer and talk one-on-one or call Katie Kamm: (812) 277-8954
- Next meetings will be held in March 2010
- CLP Meetings to be held on December 11, 2009 and in March 2010



COMMUNITY RELATIONS ACTIVITIES

RCRA CORRECTIVE ACTION/CERCLA REMOVAL ACTION

G M P O W E R T R A I N B E D F O R D P L A N T , B E D F O R D , I N D I A N A

- Project website at:
<http://www.BedfordPowertrainCorrectiveAction.com>
- Quarterly Community Meetings are available on the website
- Public Information Repository (GM Plant) currently by appointment with Katie and repository publications are also available on the project website
- Community Liaison Panel (CLP) – members listed in minutes on website
- Periodic information sessions
- Periodic Project Fact Sheets (twenty-six issued to date)
- Project Questions or Truck Traffic Issues contact Katie Kamm:
(812) 277-8954