



GM CETC BEDFORD FACILITY BEDFORD, INDIANA

RCRA CORRECTIVE ACTION/CERCLA REMOVAL ACTION

G M C E T C B E D F O R D F A C I L I T Y , B E D F O R D , I N D I A N A

Public Information Session June 20th, 2013



- Facility located on 152.5 acres and is approximately 1,000,000 square feet of manufacturing footprint
- Approximately 450 employees



- Comprehensive Environmental Response, Compensation, and Liability Act (CERCLA) Removal Action (RA)
 - Bailey's Branch and Pleasant Run PCB cleanup of creek sediments and floodplain soil.
 - RA Elements:
 - Control of impacted springs and seeps along creeks; and
 - Removal of floodplain soil to 1.8 ppm and sediment to 1 ppm in the creek. Removal is complete.
 - Remedy for large spring on Baileys Branch still under review.
 - Restoration will be completed in 2013.



REMOVAL ACTION STATUS

RCRA CORRECTIVE ACTION/CERCLA REMOVAL ACTION

GM CETC BEDFORD FACILITY, BEDFORD, INDIANA

PARCEL 40/81
RESTORATION
WEST OF PEERLESS
ROAD

GROUNDWATER
COLLECTION
TRENCH

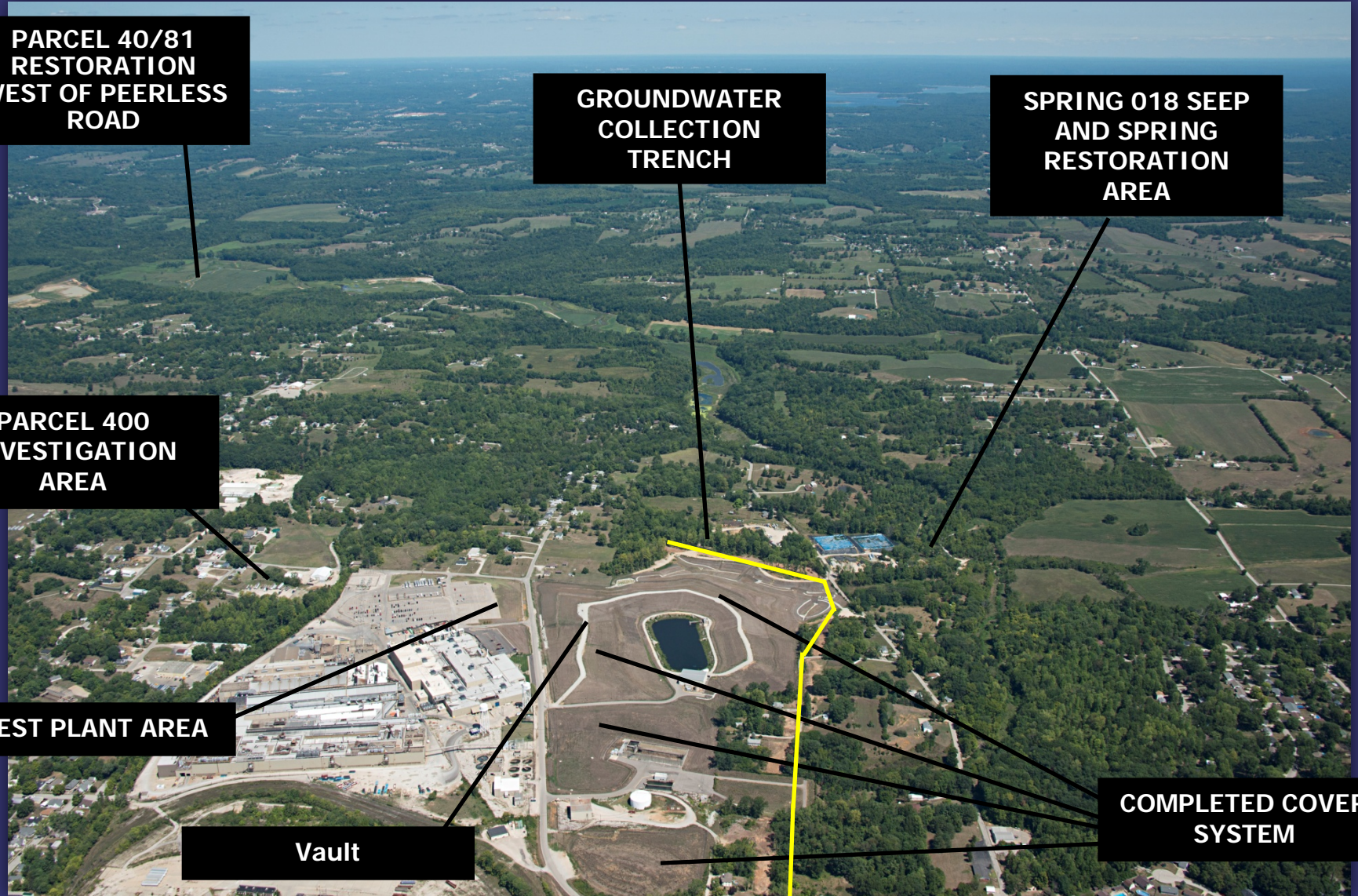
SPRING 018 SEEP
AND SPRING
RESTORATION
AREA

PARCEL 400
INVESTIGATION
AREA

WEST PLANT AREA

Vault

COMPLETED COVER
SYSTEM

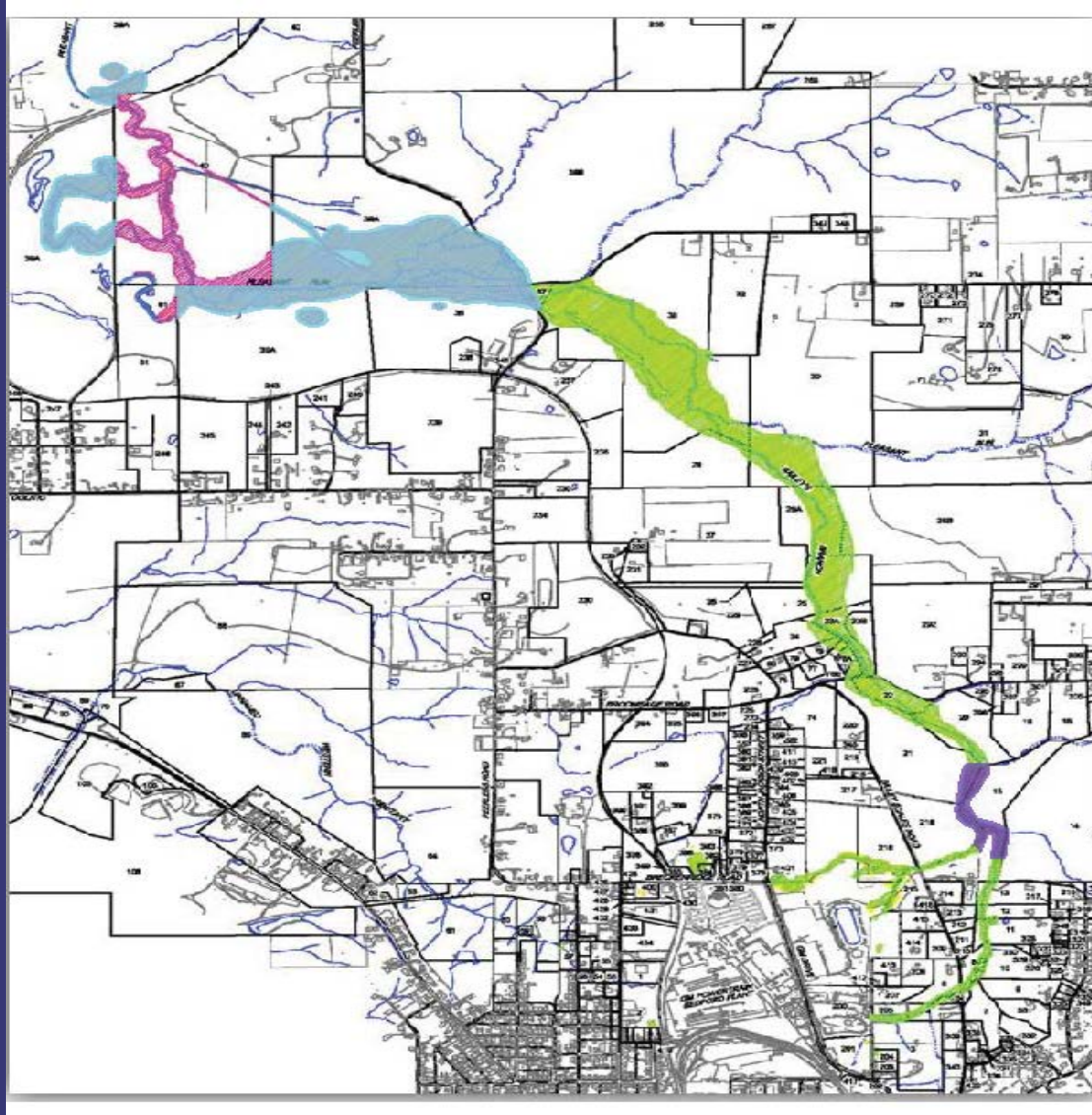




REMOVAL ACTION STATUS

RCRA CORRECTIVE ACTION/CERCLA REMOVAL ACTION

GM CETC BEDFORD FACILITY, BEDFORD, INDIANA



- Sealed Creek bottom to reduce/eliminate recharge of surface water through bedrock to Spring 18
 - Removed sediment and loose rock
 - Placed base fill (concrete and rock)
 - Installed GCL (in specific areas)
 - Placed concrete sealing layer
 - Installed reinforced sections for vehicle access
- Post-sealing monitoring indicates sealing is effective





RCRA CORRECTIVE ACTION/CERCLA REMOVAL ACTION

G M C E T C B E D F O R D F A C I L I T Y , B E D F O R D , I N D I A N A





RCRA CORRECTIVE ACTION/CERCLA REMOVAL ACTION

G M C E T C B E D F O R D F A C I L I T Y , B E D F O R D , I N D I A N A





SPRING 018

RCRA CORRECTIVE ACTION/CERCLA REMOVAL ACTION

G M C E T C B E D F O R D F A C I L I T Y , B E D F O R D , I N D I A N A





- Monthly samples from Spring 18 have consistently shown PCB concentrations <0.3 ug/L since December 2012 (7 months) despite significant disruption during the restoration work in this area.
- Since completion of the restoration work and re-establishing the entire creek flow, the temperature of both spring water and groundwater near the creek channel correlates well with upgradient groundwater temperature, indicating that the surface water recharge to Spring 18 has been largely or completely eliminated.
- Since the creek flow has been re-established, the flow rate is similar to that during the period when all of the surface water was being diverted around the restoration area
- USEPA has approved shut down of the Spring 18 collection system based on continued low PCB concentrations in the spring water. Monitoring will be conducted to confirm the conditions will persist into the future.



RESTORATION OF PARCELS WEST OF PEERLESS ROAD

RCRA CORRECTIVE ACTION/CERCLA REMOVAL ACTION

G M C E T C B E D F O R D F A C I L I T Y , B E D F O R D , I N D I A N A

- Clearing and grubbing activities have begun
- Surveying activities have begun
- Restoration work to include:
 - Restore creek channel and floodplain
 - Fill-in diversion channel
 - Re-use stockpiled materials
 - Construct creek crossings
 - Coordinate remediation activities with RACER Trust
 - Replace fence



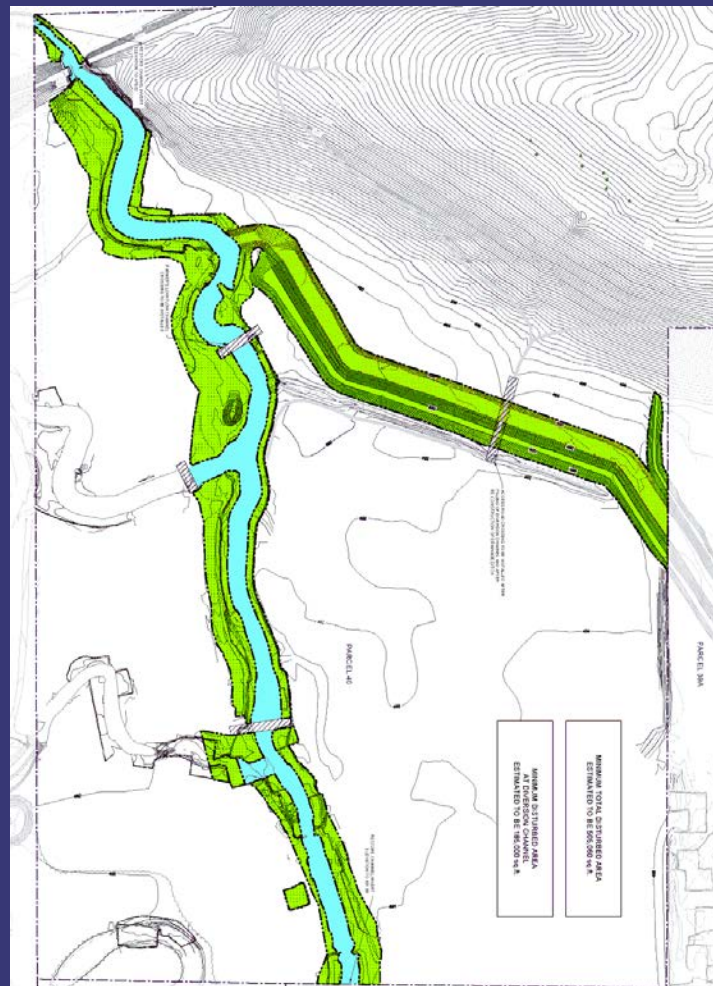


RESTORATION OF PARCELS WEST OF PEERLESS ROAD

RCRA CORRECTIVE ACTION/CERCLA REMOVAL ACTION

G M C E T C B E D F O R D F A C I L I T Y , B E D F O R D , I N D I A N A

- Restoration scheduled to be complete summer of 2013





RESTORATION OF PARCELS WEST OF PEERLESS ROAD

RCRA CORRECTIVE ACTION/CERCLA REMOVAL ACTION

G M C E T C B E D F O R D F A C I L I T Y , B E D F O R D , I N D I A N A

- RACER Trust will be restoring property immediately west of Peerless Road.
- RACER and GM restoration activities are both scheduled for the summer
- RACER and GM will be coordinating restoration activities



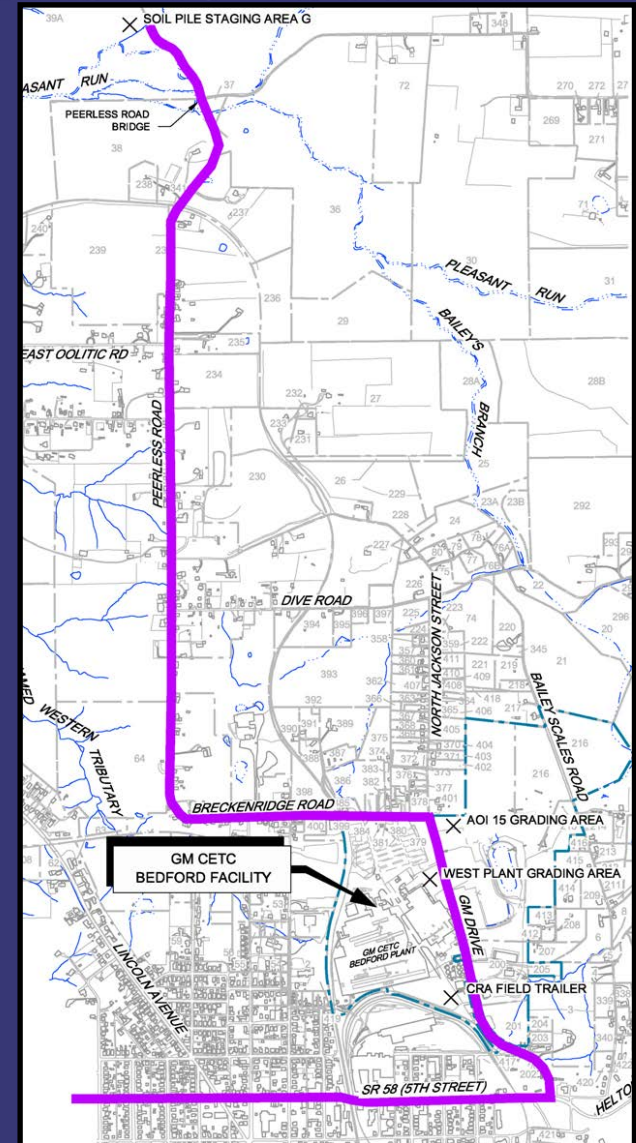


TRUCK TRAFFIC ROUTES

RCRA CORRECTIVE ACTION/CERCLA REMOVAL ACTION

GM CETC BEDFORD FACILITY, BEDFORD, INDIANA

- GM LLC project-related truck traffic has been reduced the first half of 2013.
- Truck traffic for both GM LLC and RACER Trust will increase in summer as clean fill material is brought in from outside sources for the balance of restoration work.
- CRA will continue to monitor safety of truckers.
- Truck Traffic Issues:
Katie Kamm - (812) 277-8954



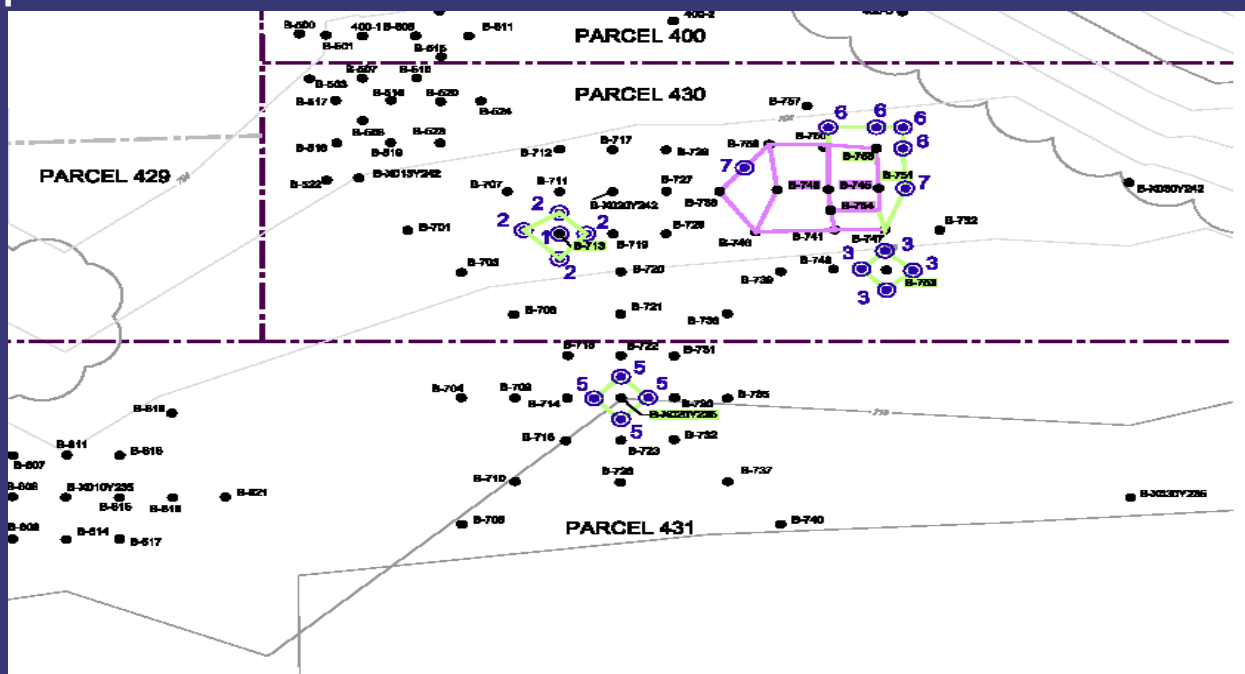


PARCELS 400, 430 AND 431

RCRA CORRECTIVE ACTION/CERCLA REMOVAL ACTION

GM CETC BEDFORD FACILITY, BEDFORD, INDIANA

- Additional boreholes advanced to further delineate the proposed prescriptive excavation limit
- Field program implemented in May 2013
- Data is being evaluated. Additional sampling may be required





RACER Trust Properties Unsold

RCRA CORRECTIVE ACTION/CERCLA REMOVAL ACTION

G M C E T C B E D F O R D F A C I L I T Y , B E D F O R D , I N D I A N A

Tax ID No.	Address Location	CRA No./ Project Parcel No.	Status of Property	Date of Sale	Environmental Status
47-03-33-100-005.000-006	Bud Ikerd Rd	39 (39A)	UNSOLD	N/A	Restoration to be completed
47-03-34-300-007.000-006	Bud Ikerd Rd	39 (39A)	UNSOLD	N/A	Restoration to be completed
47-03-34-300-008.000-006	Bud Ikerd Rd (Bud Ikerd Rd)	39 (39A)	UNSOLD	N/A	Restoration to be completed
47-03-34-400-010.000-006	Bud Ikerd Rd	39 (39A)	UNSOLD	N/A	Restoration to be completed
47-03-34-900-002.000-006	Bud Ikerd Rd (Bud Ikerd Rd)	39 (39A)	UNSOLD	N/A	Restoration to be completed
47-03-35-300-014.000-006	Peerless Rd	39 (39A)	UNSOLD	N/A	Restoration to be completed
47-03-35-300-021.000-006	Peerless Rd	39 (39A)	UNSOLD	N/A	Restoration to be completed
47-06-03-100-011.000-009	RR 19 East Oolitic	39 (39A)	UNSOLD	N/A	Restoration to be completed
47-06-03-200-004.000-009	East Oolitic	39 (39A)	UNSOLD	N/A	Restoration to be completed
47-06-02-400-080.000-009	Mt Pleasant Rd	28A	UNSOLD	N/A	Completed
47-06-11-100-013.000-009	Rawlins Mill Rd	76B	UNSOLD	N/A	Completed
47-06-11-100-048.000-009	1081 Breckenridge	381	UNSOLD	N/A	Access for future inspections?
47-06-11-100-049.000-009	Breckenridge	384	UNSOLD	N/A	Completed
47-06-11-100-060.000-009	Redbud St	386	UNSOLD	N/A	Access for future inspections
47-06-11-100-061.000-009	Redbud St	P386	UNSOLD	N/A	Access for future inspections
47-06-11-100-074.000-009	Vacant Lot on Breckinridge (Breckenridge)	382	UNSOLD	N/A	Completed
47-06-11-400-060.000-010	228 Madison	427	UNSOLD	N/A	Remediation Required
47-06-11-400-062.000-010	224 Madison	428	UNSOLD	N/A	Remediation Required
47-06-11-400-063.000-010	222 N Madison	429	UNSOLD	N/A	Remediation Required
47-06-11-500-068.000-009	Redbud St	393	UNSOLD	N/A	Completed
47-06-12-300-065.000-010	Riley Blvd	330	UNDER CONTRACT	TBD	Completed
47-06-12-403-027.000-010	133 Bailey Lane	7	UNSOLD	N/A	Completed
47-06-12-403-042.000-010	Riley Blvd	7	UNSOLD	N/A	Completed



RCRA CORRECTIVE ACTION

RCRA CORRECTIVE ACTION/CERCLA REMOVAL ACTION

G M C E T C B E D F O R D F A C I L I T Y , B E D F O R D , I N D I A N A

- RCRA Corrective Action
 - Conducted in accordance with a performance-based agreement with the U.S. EPA Region V. The agreement was signed on March 20, 2001 and amended October 1, 2002, March 29, 2008, and May 9, 2008.

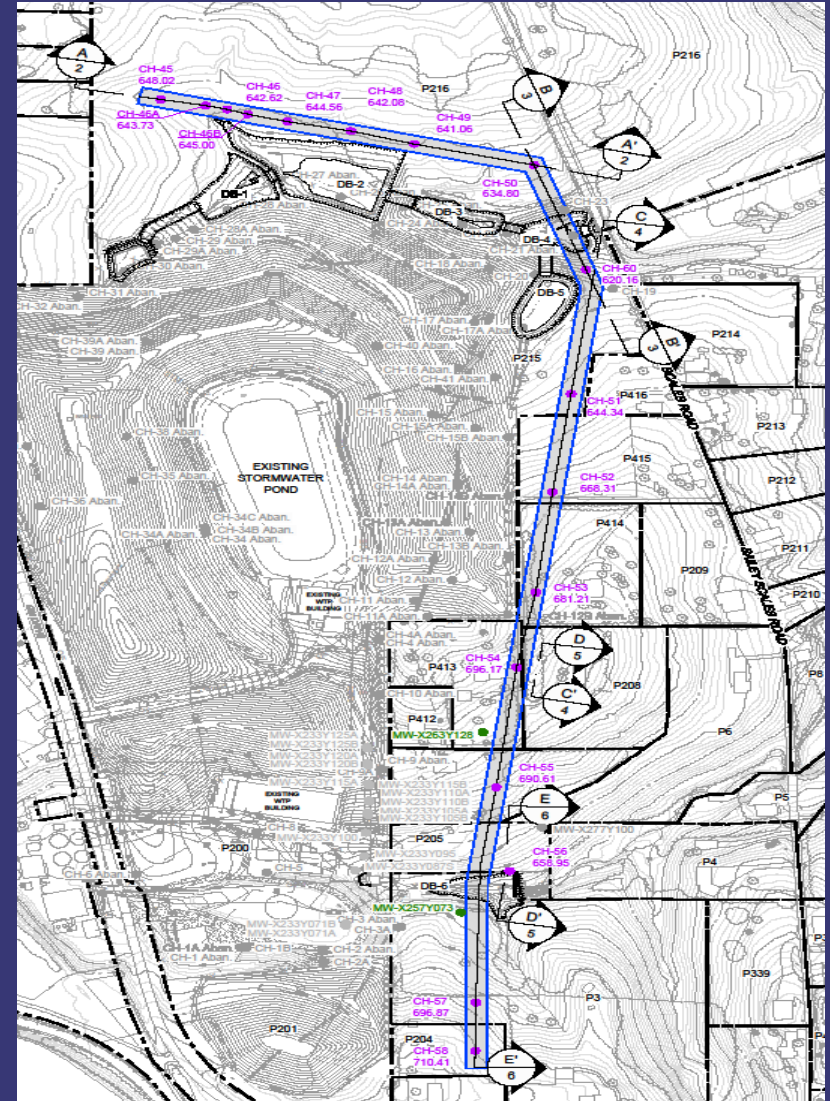


GROUNDWATER COLLECTION TRENCH

RCRA CORRECTIVE ACTION/CERCLA REMOVAL ACTION

GM CETC BEDFORD FACILITY, BEDFORD, INDIANA

- Alternative trench alignment was presented to U.S. EPA. Modifications based on:
 - Changes in trench direction require complete removal of the trencher arm and repositioning of the rock trenching machine
 - Proximity to the completed cover system
 - Avoidance of obstacles and obstructions (such as overhead lines)
- In order to facilitate installation of the trench with minimal impact to neighboring properties, GM purchased 5 properties along Barlow Lane and Bailey Scales Road





GROUNDWATER COLLECTION TRENCH

RCRA CORRECTIVE ACTION/CERCLA REMOVAL ACTION

G M C E T C B E D F O R D F A C I L I T Y , B E D F O R D , I N D I A N A

- Bedrock coreholes advanced along the revised groundwater trench alignment
- Packer tests completed for each corehole
- Downhole geophysics logging completed
- Data provided by email
- Data used to design pilot trench





UPCOMING ACTIVITIES FOR 2013

- Continue cover system maintenance to ensure established vegetative cover growth
- Continue to contain, collect, and treat on-Site springs and groundwater collection systems that contain low levels of PCBs.
- Conduct bi-annual groundwater sampling
- Design the AOI8 NAPL recovery system
- Complete restoration west of Peerless Road (Parcels 40 and 81)
- Finalize the pilot groundwater collection trench design
- Finalize the Parcel 400 area excavation plan
- Complete remaining on-Site sampling needed to complete the RCRA Facility Investigation Report.



COMMUNITY RELATIONS ACTIVITIES

RCRA CORRECTIVE ACTION/CERCLA REMOVAL ACTION

G M C E T C B E D F O R D F A C I L I T Y , B E D F O R D , I N D I A N A

- Community meetings have been held on a quarterly basis.
 - GM has revised the public invitation mailing list based on postcard responses. Meetings will continue to be announced in the Bedford Times Mail.
 - Presentations have been and will continue to be posted to the website and the library
 - People can always call Katie Kamm with questions:
(812) 277-8954
- A CLP Meeting was held today



COMMUNITY RELATIONS ACTIVITIES

RCRA CORRECTIVE ACTION/CERCLA REMOVAL ACTION

G M C E T C B E D F O R D F A C I L I T Y , B E D F O R D , I N D I A N A

- Project website at:
<http://www.BedfordPowertrainCorrectiveAction.com>
- Quarterly Community Meetings are available on the website
- All final approved documents can be found on the project website
- Community Liaison Panel (CLP) – members listed in minutes on website
- Periodic information sessions – next meeting likely to be held at the end of the year.
- Periodic Project Fact Sheets (thirty-sixth issued to date)
- Project Questions or Truck Traffic Issues contact Katie Kamm:
(812) 277-8954