



Public Information Session December 7, 2016



- Facility located on 152.5 acres and is approximately 1,000,000 square feet of manufacturing footprint
- Approximately 450 employees

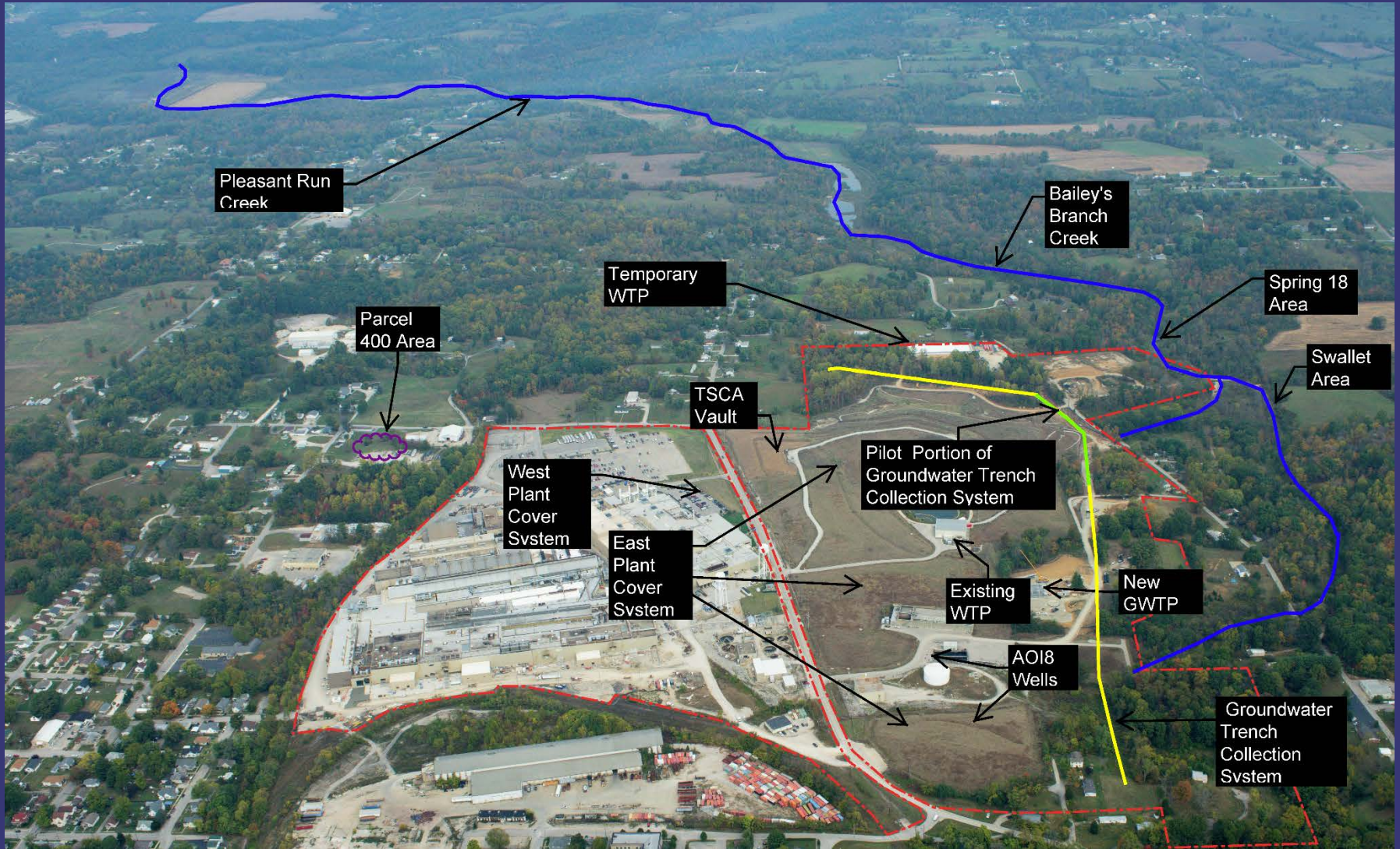


- Comprehensive Environmental Response, Compensation, and Liability Act (CERCLA) Removal Action (RA)
 - Bailey's Branch and Pleasant Run PCB cleanup of creek sediments and floodplain soil
 - RA Elements:
 - Control of impacted springs and seeps along creek
 - Removal of floodplain soil to 1.8 ppm and sediment to 1 ppm in the creek (removal is complete)
 - Monitoring continues for large spring on Baileys Branch Creek.
 - Creek and floodplain restoration was completed in August 2014.
- RCRA Corrective Action
 - GM LLC and USEPA entered into an AOC for those areas which GM LLC is responsible.



GM BEDFORD REMEDIATION PROJECT

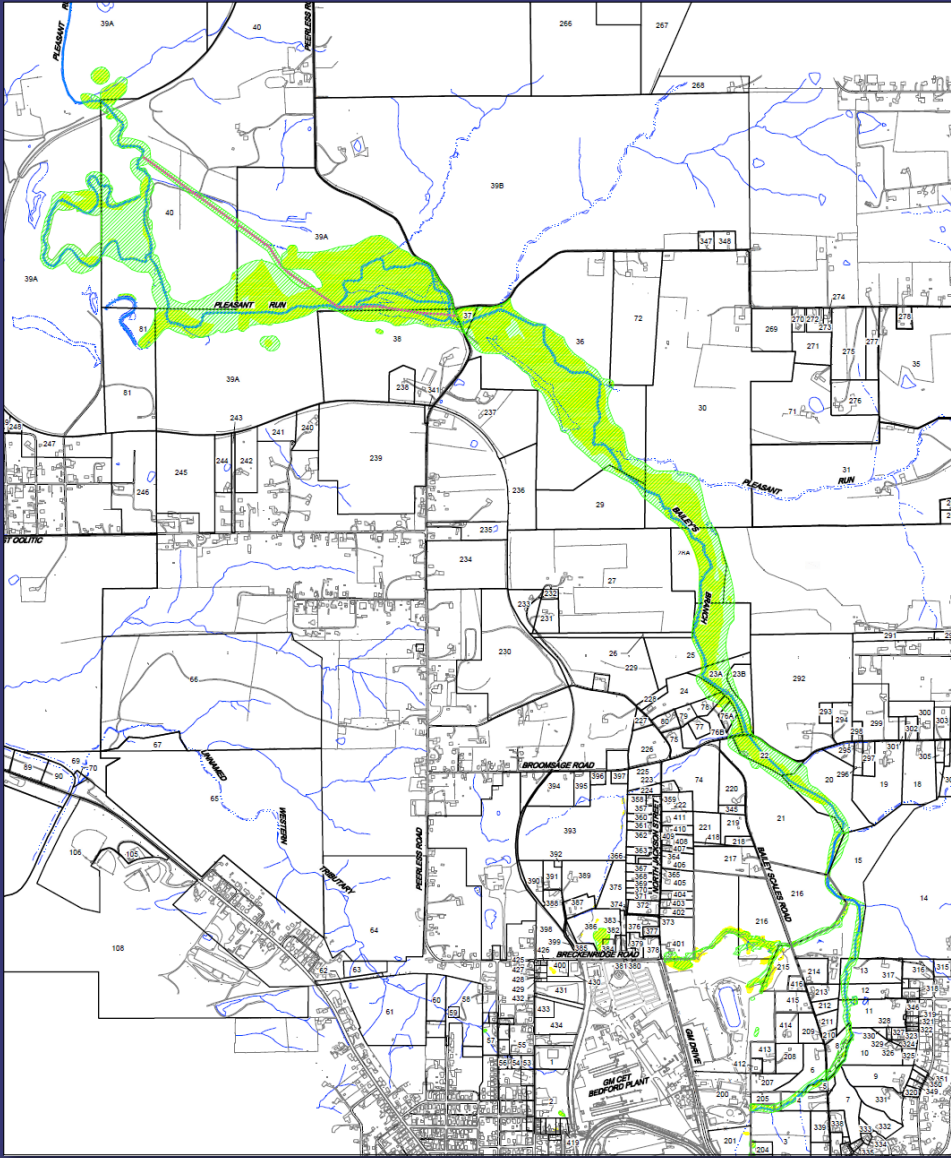
G M C E T B E D F O R D F A C I L I T Y , B E D F O R D , I N D I A N A





REMOVAL ACTION STATUS

G M C E T B E D F O R D F A C I L I T Y , B E D F O R D , I N D I A N A





CREEK RESTORATION

G M C E T B E D F O R D F A C I L I T Y , B E D F O R D , I N D I A N A





PILOT PERIMETER GROUNDWATER TRENCH COLLECTION SYSTEM

G M C E T B E D F O R D F A C I L I T Y , B E D F O R D , I N D I A N A

- The Pilot Perimeter Groundwater Trench Collection System was designed to work in conjunction with the East Plant Source Removal and Cover System to provide horizontal control of groundwater transport.
- Project Scope:
 - Prepare a working platform for the bedrock trenching machine
 - Excavate a trench with the bottom of the trench terminating in competent rock
 - Install a physical barrier (vinyl sheet wall) on the backside of the trench and grout in place
 - Install a drain pipe at the base of the trench for groundwater collection and backfill the trench with gravel
 - Install a collection sump, piping, controls, and backup controls to transfer collected groundwater to the GWTP for treatment
 - Backfill the surface area above the trench to re-establish exiting grades
- Pilot perimeter groundwater trench collection system construction has been completed and the trench is operational. Construction Completion and Pilot Study reports are in progress.



PILOT PERIMETER GROUNDWATER TRENCH COLLECTION SYSTEM

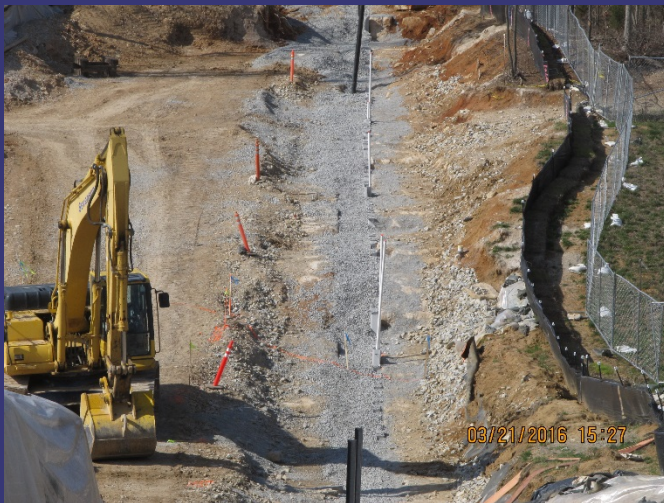
G M C E T B E D F O R D F A C I L I T Y , B E D F O R D , I N D I A N A





PILOT PERIMETER GROUNDWATER TRENCH COLLECTION SYSTEM

G M C E T B E D F O R D F A C I L I T Y , B E D F O R D , I N D I A N A





PILOT PERIMETER GROUNDWATER TRENCH COLLECTION SYSTEM

G M C E T B E D F O R D F A C I L I T Y , B E D F O R D , I N D I A N A



GM CET BEDFORD FACILITY, BEDFORD, INDIANA

- Storm Pond (built in 1981) receives stormwater runoff from the Facility. Pre-design studies found an average sediment depth of 2.2 ft.
- Project Scope:
 - Raise the access road around the perimeter of the pond to provide additional stormwater storage capacity
 - Remove sediments from the pond bottom through combination of wet dredging/filter press and sediment stabilization/dry excavation
 - Line pond bottom and sides with 100 mil thickness liner
 - Material disposal at appropriate landfills





STORM POND SEDIMENT REMOVAL - WET DREDGING

G M C E T B E D F O R D F A C I L I T Y , B E D F O R D , I N D I A N A





STORM POND SEDIMENT REMOVAL – SUPPORTING OPERATIONS

G M C E T B E D F O R D F A C I L I T Y , B E D F O R D , I N D I A N A





STORM POND SEDIMENT REMOVAL - DRY EXCAVATION PREP

G M C E T B E D F O R D F A C I L I T Y , B E D F O R D , I N D I A N A





EAST/WEST PLANT MONITORING AND MAINTENANCE

G M C E T B E D F O R D F A C I L I T Y , B E D F O R D , I N D I A N A

- GM conducts quarterly inspections of the cover system.
- As-need repairs are made to the cover system.
- Asphalt cracks were filled and the surface re-sealed in July 2016.
- Cover system will be mowed in December 2016.
- Wildflower planting options are being evaluated.



- Construction of the GWTP is complete.
- GWTP treats groundwater from the perimeter trench, site source control wet wells, and vault sumps.
- Treated water discharges are monitored through a NPDES permit managed by GM Remediation.





GWTP OPERATIONS

G M C E T B E D F O R D F A C I L I T Y , B E D F O R D , I N D I A N A





GWTP INPUTS

G M C E T B E D F O R D F A C I L I T Y , B E D F O R D , I N D I A N A





EXISTING WATER TREATMENT PLANT

G M C E T B E D F O R D F A C I L I T Y , B E D F O R D , I N D I A N A

- Storm pond water will continue to be treated through the existing Stormwater Treatment Plant.
- Treated water discharges are monitored through a NPDES permit managed by GM GPS.
- Operation of the SWTP is being transitioned to GM GPS.
- GM will decommission the groundwater treatment portion of the facility.

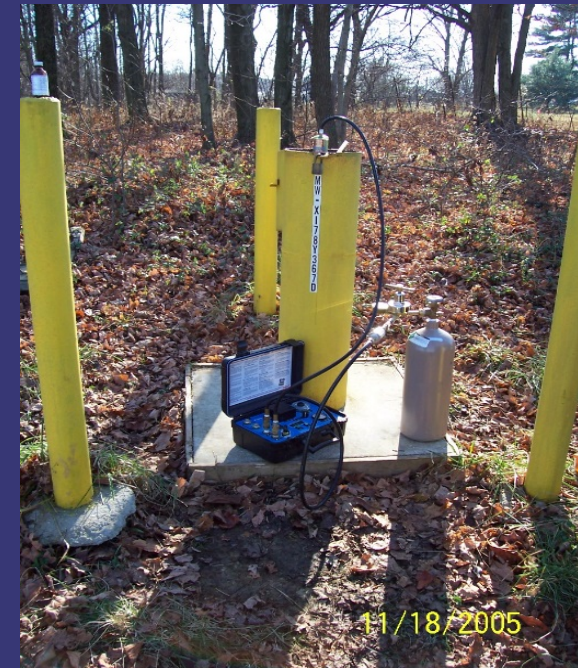
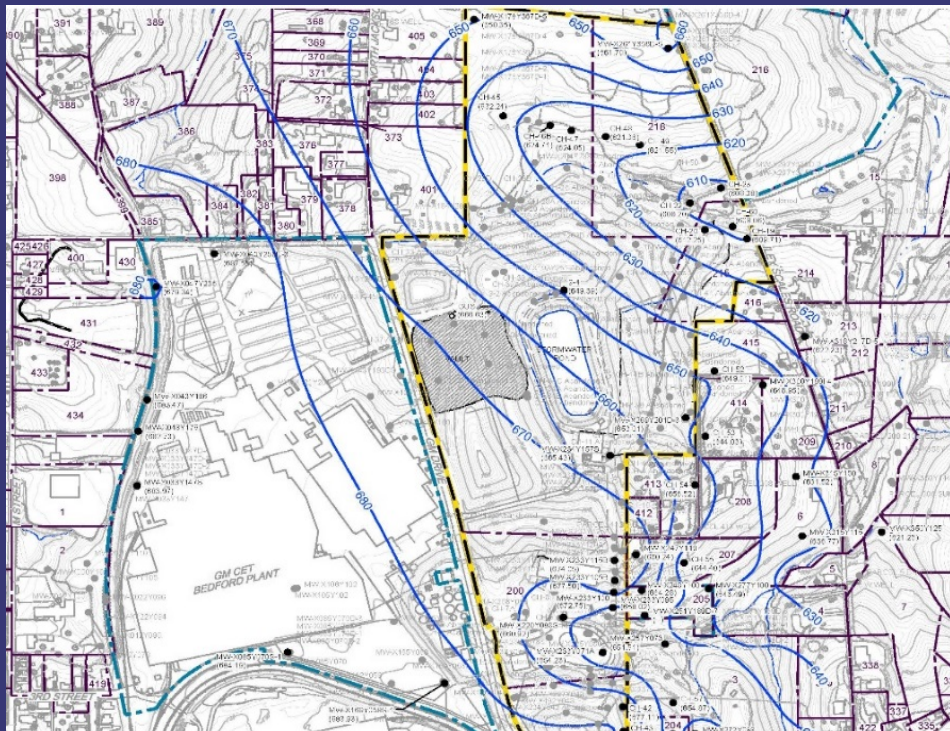




EI CA750 GROUNDWATER MONITORING

G M C E T B E D F O R D F A C I L I T Y , B E D F O R D , I N D I A N A

- Quarterly groundwater level measurements collected.
- Groundwater sampling events conducted in May 2016 and December 2016.
- Groundwater elevations show no significant changes under the Cover System.

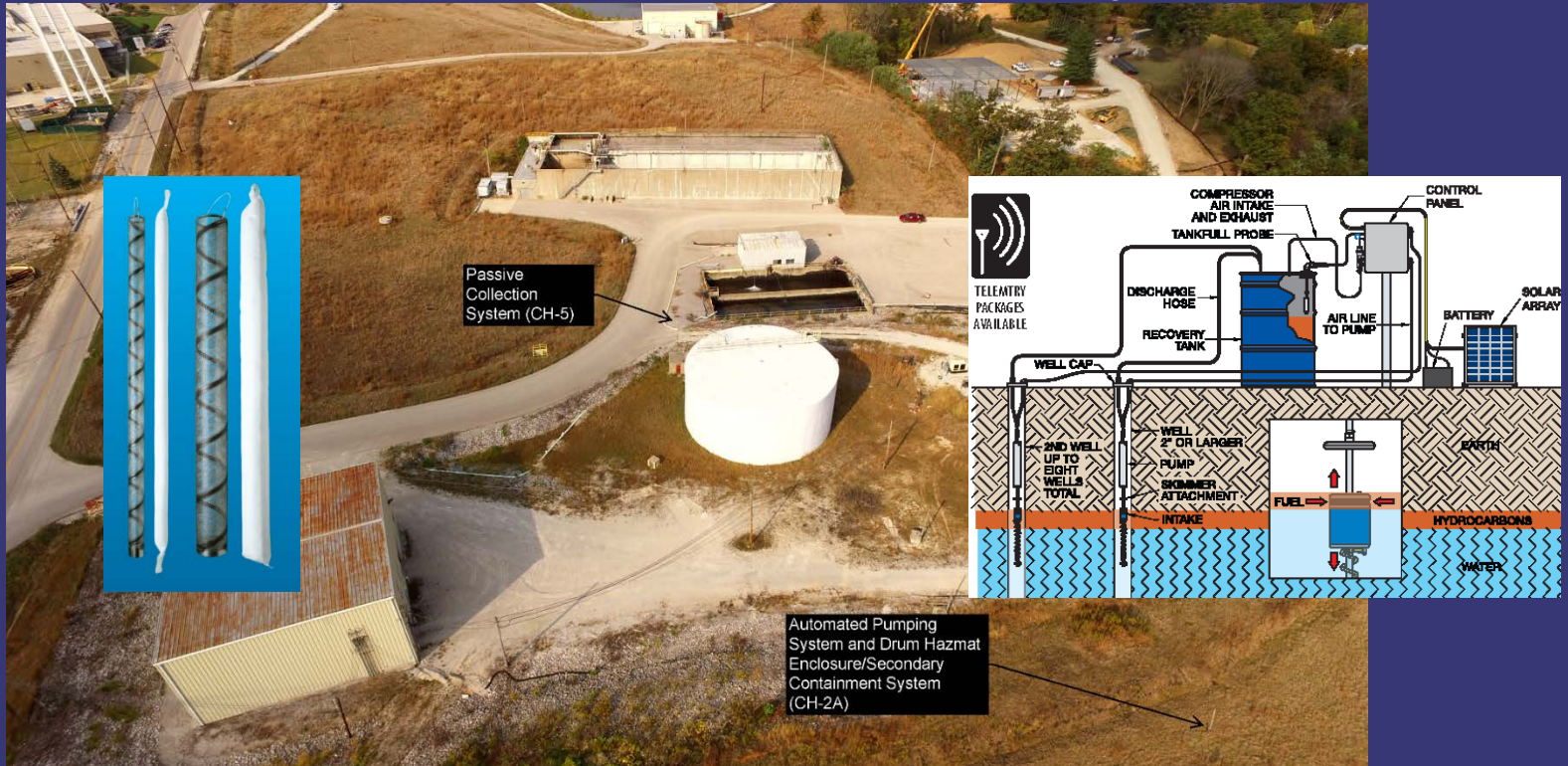




AOI 8 OIL COLLECTION SYSTEM

G M C E T B E D F O R D F A C I L I T Y , B E D F O R D , I N D I A N A

- U.S.EPA approved conceptual design.
- GM Remediation will coordinate installation schedule with Bedford Plant.
- Material will be disposed off site appropriately.





SPRING 18 AND SWALLET MONITORING

G M C E T B E D F O R D F A C I L I T Y , B E D F O R D , I N D I A N A

- GM continues to collect monthly samples from Spring 18 and analyze for PCBs.
- GM and U.S.EPA are working on an order to conduct work in the creek.
- Will be sealing additional crack in the rock connected to Spring 18.





- Community meetings have been held on a regular basis, currently meeting twice/year
 - Meetings will continue to be announced in the Bedford Times Mail
 - Presentations have been and will continue to be posted to the website and the library
 - People can always call Katie Kamm with questions: (812) 277-8954
- The last CLP Meeting was held in June 2016.
- Information from the presentations are posted to the website



G M C E T B E D F O R D F A C I L I T Y , B E D F O R D , I N D I A N A

- Project website at:
<http://www.BedfordPowertrainCorrectiveAction.com>
- Community Meetings are available on the website
- Final approved documents can be found on the project website
- Periodic information sessions – next meeting likely to be held June 2017.
- Periodic Project Fact Sheets (forty-three issued to date)
- Project Questions contact Katie Kamm: (812) 277-8954