



RCRA Corrective Action December 2020

GM Bedford Casting Operations Facility, Bedford, Indiana

Project Fact Sheet 48

This is the forty-eighth Project Fact Sheet that has been prepared to provide the community with information regarding RCRA Corrective Action (CA) activities being performed at the General Motors (GM) Bedford Casting Operations (Facility). This Fact Sheet discusses those cleanup activities occurring during 2019 and 2020.

Project Background

A RCRA Administrative Order on Consent (AOC) between GM and U.S. EPA to complete the CA work was signed on August 4, 2014. A number of Interim Corrective Measures (a.k.a. 'IMs' or 'remedy components') have been conducted since 2003.

Project Update

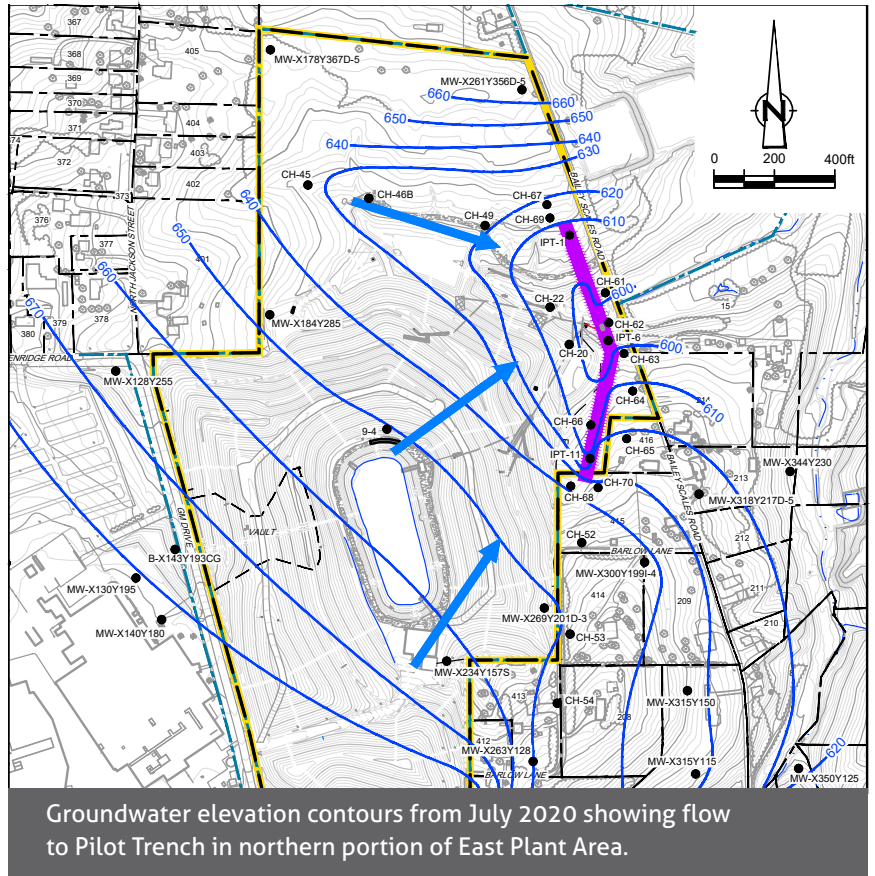
Within the East Plant Area at the GM Bedford Facility, landfill systems continue to be monitored on a semi-annual basis and repaired as needed. The spring season inspections are conducted in April of each year and the fall inspections are conducted in October of each year. The April 2020 inspection and incidental cover maintenance was performed in the fall due to the business disruption caused by the Coronavirus pandemic.

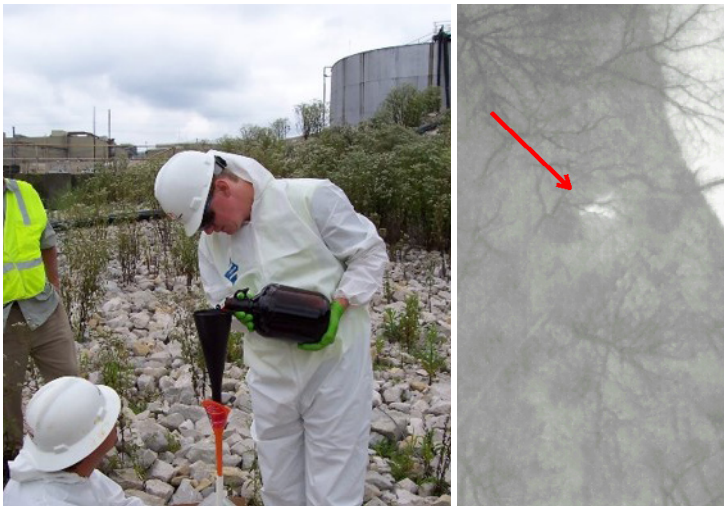
The Pilot Groundwater Collection Trench Construction Certification Report was approved by the U.S. EPA in December 2019. The report describes the construction of the first segment of the perimeter groundwater control system, located in the northeast corner of the East Plant Area, including as-built drawings. Groundwater collected with the trench system is conveyed to the Groundwater Treatment Plant where it is combined with water from the Vault sumps and Site Source Control wet wells. This water is treated and discharged to Bailey's Branch Creek in compliance with a National Pollution Discharge Elimination System (NPDES) Permit issued by the State of Indiana.

Since construction of the Pilot Trench, GM has been monitoring groundwater flow and quality to evaluate the effectiveness and ensure it meets the goals and objectives established for the project.

To conduct a robust assessment of the Pilot Trench performance, GM has prepared the Pilot Trench Performance Monitoring Plan. The first tasks in the Pilot Trench Performance Monitoring Plan, including monitoring well installation and a thermal imaging survey to identify springs and seeps along Bailey's Branch, have been completed.

The next tasks will include three on-site dye trace studies that began in the fall of 2020 and will continue through much of 2021.. Springs, seeps and groundwater in select monitoring wells will be tested for traces of the dye. The results of these studies, combined with the trench monitoring and other groundwater monitoring activities, will add to the overall understanding of groundwater flow at the facility.



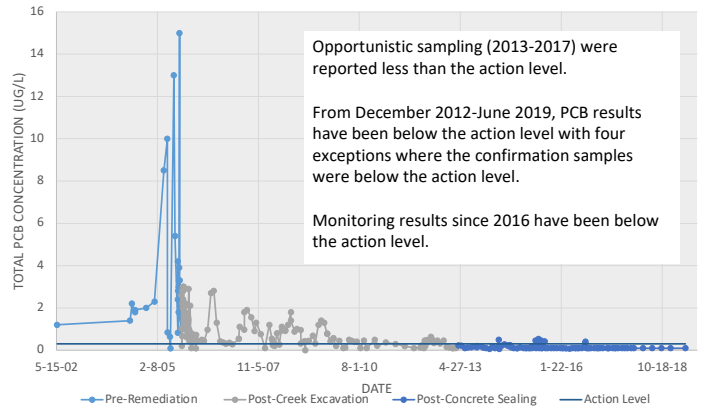


The RCRA Facility Investigation (RFI) Report was approved by U.S. EPA in February 2020. This RFI Report provides the results, analysis and conclusions of the investigation work that began in 2001. The major conclusions described in the RFI Report include:

- The investigation activities described in the RFI Work Plan, as amended, was completed;
- A number of Interim Corrective Measures have been completed;
- Thirty-three Areas of Interest (AOIs), both on and off of the GM Bedford Facility, were thoroughly investigated; and
- Human Health Risk Assessment and Ecological Risk Assessments were conducted to determine whether conditions warranted additional corrective measures. Additional corrective measures will be evaluated for just four of the AOIs to address future groundwater migration and soil/groundwater exposures at the Facility.

GM has prepared and submitted to the U.S. EPA an addendum to the RFI Report to incorporate two recent areas of investigation tasks – previously unsampled areas of the Facility where maintenance work may be conducted in the future and the results of sampling soil and groundwater near the clarifiers at facility’s water treatment plant west of GM Drive (Clarifier Area).

The final Spring O18 water sample was collected in June 2019 demonstrating that the spring water continues to be at or below the target concentration. A Spring O18 Interim Measures completion memorandum has been submitted to US EPA to summarize the remediation, restoration and monitoring work conducted.



PCB concentrations in water at Spring O18 2002 - 2019

Communications Update

The last neighborhood/public meeting was held on the evening of June 12, 2019. The presentation materials for this meeting are posted on the GM website at www.BedfordPowertrainCorrectiveAction.com. Additional meetings will be held on an as-needed basis. Community Liaison Panel (CLP) meetings are no longer held separately and are also part of the public meeting.

The Documents Repository is available online and continues to be updated and maintained on the GM website, which can be accessed at www.BedfordPowertrainCorrectiveAction.com. A list of new project documents, submitted to the online information repository since Fact Sheet 47 is provided on this Fact Sheet, below.

This Fact Sheet has been provided to area residents through the U.S. Postal Service and by email. If you would like to receive this and future Fact Sheets through the mail, please contact Katie Kamm at (812) 277-8954 and you will be added to our mailing list or let Katie know if you no longer wish to receive it.

Public Access Website at...

www.BedfordPowertrainCorrectiveAction.com

Get up-to-date project information and view project related documents.

The documents listed in the columns to the right have been submitted to the U.S. EPA and IDEM since Fact Sheet 47 and are available for review on the website and at the Public Library.

Contact Information

If you would like more information about this project, please contact any of the following:

U.S. EPA
Peter Ramanauskas
 for general information
 and on-site work
 Tel: (312) 886-7890
Daniel Haag
 for creek cleanup work
 Tel: (312) 886-6906

IDEM
Chris Myer
 Tel: (312) 233-4625

PROJECT INFORMATION – GM
Katie Kamm
 Tel: (812) 277-8954

2018

- East Plant Area TSCA Vault Annual Report 2017
- Progress Report 70 – Third Quarter 2018)

2019

- Progress Report 71 – Fourth Quarter 2018
- Progress Report 72 – First Quarter 2019
- East Plant Area TSCA Vault Annual Report 2018
- Progress Report 73 – Second Quarter 2019
- Final QAPP
- Pilot Trench Performance Monitoring Plan
- Progress Report 74 – Third Quarter 2019

- Pilot Perimeter Groundwater Collection Trench Construction Certification Report

2020

- Progress Report 75 – Fourth Quarter 2019
- Final RCRA Facility Investigation (RFI) Report
- Progress Report 76 – First Quarter 2020
- Progress Report 77 – Second Quarter 2020
- RFI Addendum No.1
- East Plant Area TSCA Vault Annual Report 2019
- Progress Report 78 – Third Quarter 2020