



# GM POWERTRAIN BEDFORD FACILITY BEDFORD, INDIANA

RCRA CORRECTIVE ACTION/CERCLA REMOVAL ACTION

G M P O W E R T R A I N B E D F O R D P L A N T , B E D F O R D , I N D I A N A

## Welcome to the 1<sup>st</sup> Quarter 2010 Public Information Session March 18, 2010



- Facility located on 152.5 acres and is approximately 1,000,000 square feet of manufacturing footprint
- Approximately 400 employees

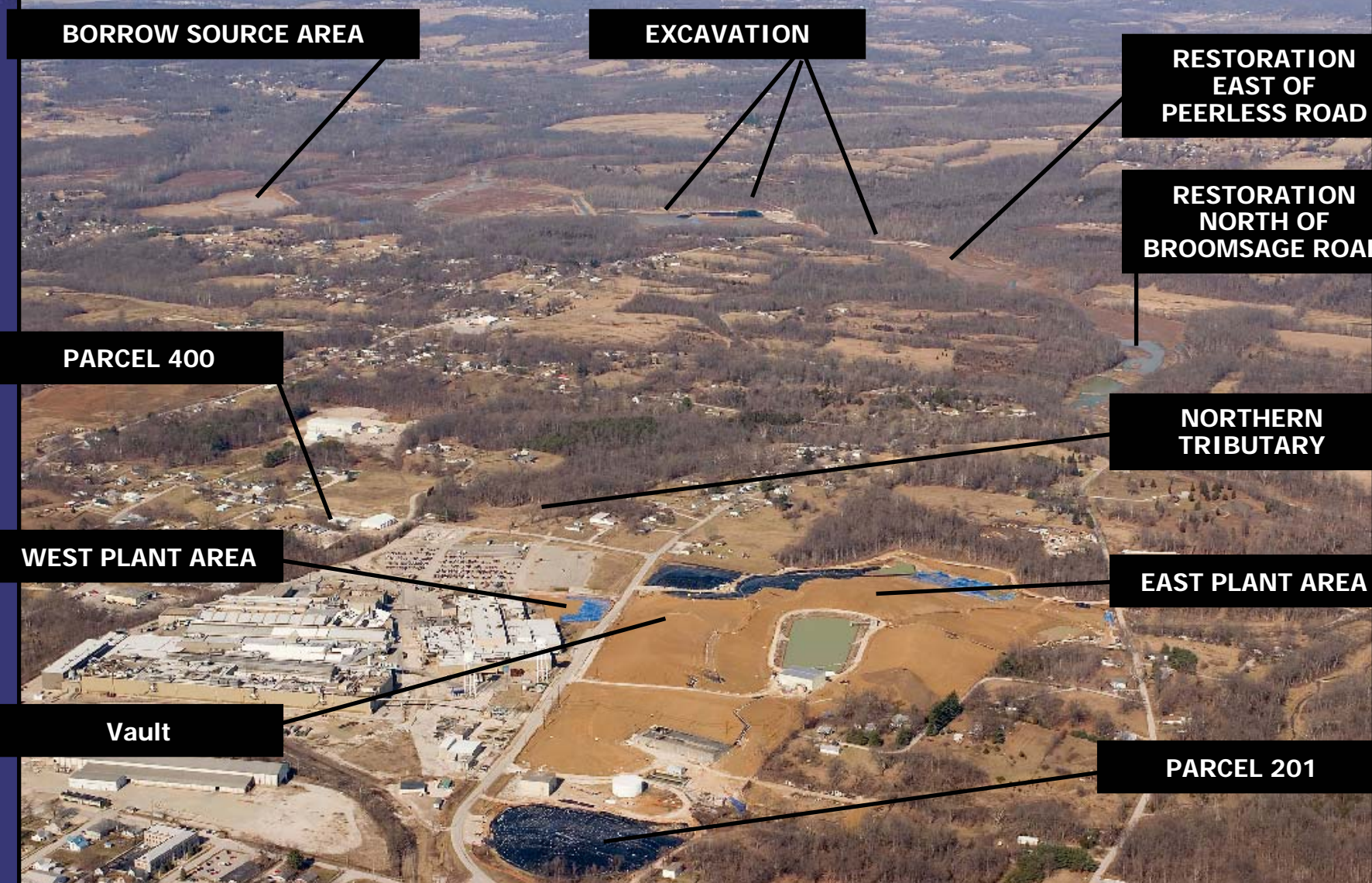


- Comprehensive Environmental Response, Compensation, and Liability Act (CERCLA) Removal Action (RA)
  - Bailey's Branch and Pleasant Run PCB cleanup of creek sediments and floodplain soil.
  - RA Elements:
    - Control of impacted springs and seeps along creeks; and
    - Removal of floodplain soil to 1.8 ppm and sediment to 1 ppm in the creek.
  - GM LLC and MLC are working on an agreement to consolidate the remaining creek removal work with the work at the East Plant Area.
    - Will restart majority of creek removal work remaining in the spring of 2010;
    - GM LLC completed some soil excavation and transportation in December 2009; and
    - Restoration of excavated areas will continue into 2011.



RCRA CORRECTIVE ACTION / CERCLA REMOVAL ACTION

GM POWERTRAIN REDFORD PLANT REDFORD INDIANA



**BORROW SOURCE AREA**

**EXCAVATION**

**RESTORATION  
EAST OF  
PEERLESS ROAD**

**RESTORATION  
NORTH OF  
BROOMSAGE ROAD**

**PARCEL 400**

**NORTHERN  
TRIBUTARY**

**WEST PLANT AREA**

**EAST PLANT AREA**

**Vault**

**PARCEL 201**



# REMOVAL ACTION STATUS

RCRA CORRECTIVE ACTION/CERCLA REMOVAL ACTION

GM POWERTRAIN BEDFORD PLANT, BEDFORD, INDIANA

DIVERSION  
CHANNEL NO. 3

BORROW SOURCE  
AREA AND HAUL  
ROAD

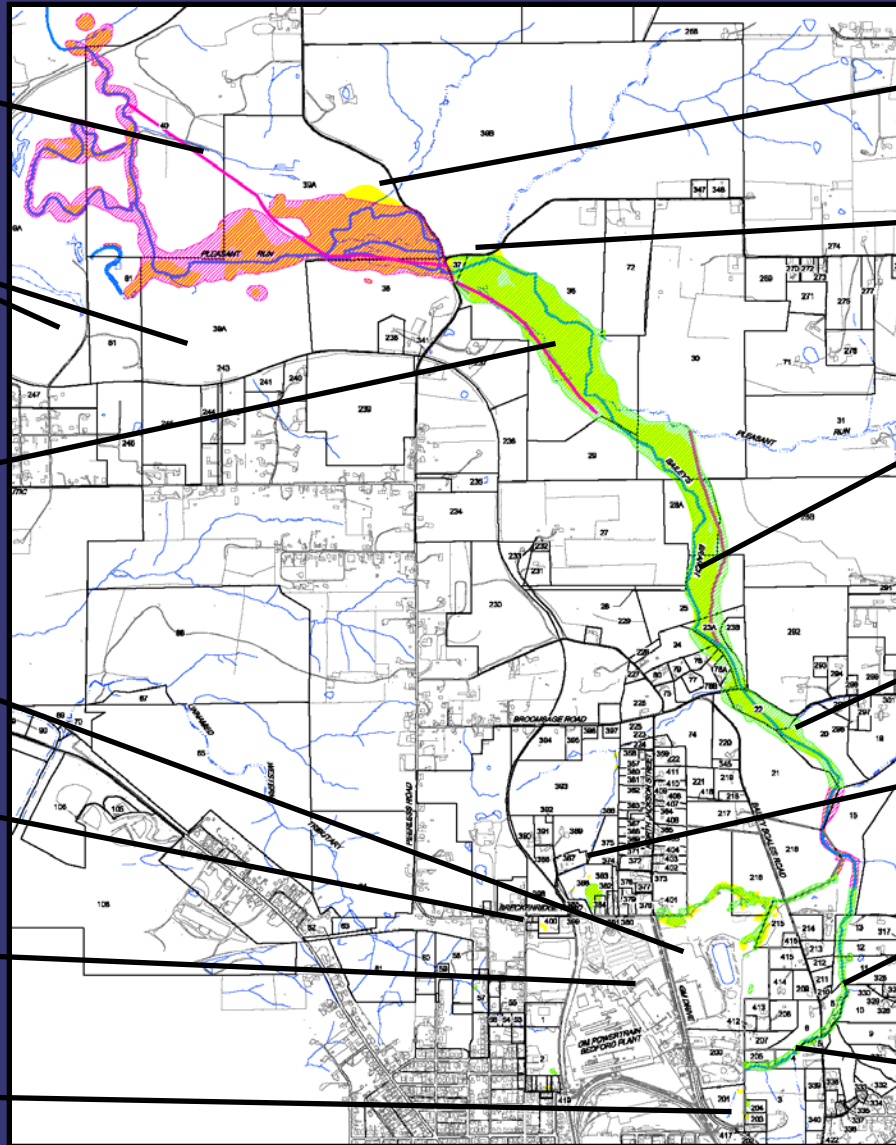
NEW RESTORATION  
BETWEEN  
BROOMSAGE ROAD  
AND PEERLESS  
ROAD

EAST PLANT AREA  
VAULT

PARCEL 400 AREA

WEST PLANT AREA

PARCEL 201



STAGING AREA

EXCAVATION  
UNDER FORMER  
WATER  
TREATMENT PLANT

RESTORATION  
NORTH OF  
BROOMSAGE ROAD

RESTORATION  
SOUTH OF  
BROOMSAGE ROAD

NORTHERN  
TRIBUTARY

RESTORATION  
EAST OF BAILEY  
SCALES ROAD

RESTORATION  
WEST OF BAILEY  
SCALES ROAD



# CREEK RESTORATION

RCRA CORRECTIVE ACTION / CERCLA REMOVAL ACTION

G M P O W E R T R A I N B E D F O R D P L A N T , B E D F O R D , I N D I A N A



Looking east and west from Bailey Scales Road



# CREEK RESTORATION

RCRA CORRECTIVE ACTION/CERCLA REMOVAL ACTION

G M P O W E R T R A I N B E D F O R D P L A N T , B E D F O R D , I N D I A N A



Looking south of Broomsage Road restoration



# CREEK RESTORATION

RCRA CORRECTIVE ACTION/CERCLA REMOVAL ACTION

GM POWERTRAIN BEDFORD PLANT, BEDFORD, INDIANA



Restoration North of Broomsage Road



# CREEK RESTORATION

RCRA CORRECTIVE ACTION/CERCLA REMOVAL ACTION

G M P O W E R T R A I N B E D F O R D P L A N T , B E D F O R D , I N D I A N A



Looking north of Broomsage Road restoration





# CREEK RESTORATION STATUS

RCRA CORRECTIVE ACTION/CERCLA REMOVAL ACTION

GM POWERTRAIN BEDFORD PLANT, BEDFORD, INDIANA



Restoration east of Peerless Road



# CREEK RESTORATION

RCRA CORRECTIVE ACTION/CERCLA REMOVAL ACTION

G M P O W E R T R A I N B E D F O R D P L A N T , B E D F O R D , I N D I A N A



Restoration east of Peerless Road



# CREEK EXCAVATION STATUS

RCRA CORRECTIVE ACTION/CERCLA REMOVAL ACTION

GM POWERTRAIN BEDFORD PLANT, BEDFORD, INDIANA



Excavation and soil pile remaining west of Peerless Road



# CREEK EXCAVATION STATUS

RCRA CORRECTIVE ACTION/CERCLA REMOVAL ACTION

G M P O W E R T R A I N B E D F O R D P L A N T , B E D F O R D , I N D I A N A



## Excavation off Bud Ikerd Road

- Excavation off of Bud Ikerd proceeding and will be completed before spring rainy season
- Restoration to be completed Summer 2010



# CREEK EXCAVATION STATUS

RCRA CORRECTIVE ACTION/CERCLA REMOVAL ACTION

GM POWERTRAIN BEDFORD PLANT, BEDFORD, INDIANA



Excavation status in January



Excavation status in March



# CREEK EXCAVATION STATUS

RCRA CORRECTIVE ACTION/CERCLA REMOVAL ACTION

G M P O W E R T R A I N B E D F O R D P L A N T , B E D F O R D , I N D I A N A



Excavation west of Peerless Road

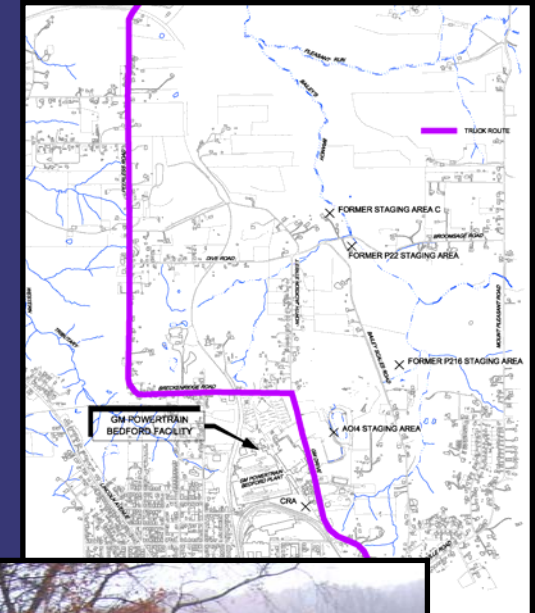


# TRUCK TRAFFIC ROUTES

RCRA CORRECTIVE ACTION/CERCLA REMOVAL ACTION

GM POWERTRAIN BEDFORD PLANT, BEDFORD, INDIANA

- There was a short period of increased traffic in January through March 2010.
- There will be increased road traffic when trucking resumes this spring.
- GM will be patching/paving roads as needed and as weather permits.
- CRA continuously monitors safety of truckers.
- At the end of truck traffic, GM will be resurfacing/repairing the last stretches of road used by the project, where needed.
- Truck Traffic Issues:  
Katie Kamm - (812) 277-8954





- RCRA Corrective Action

- Conducted under a performance-based agreement with the U.S. EPA Region V. The agreement was signed on March 20, 2001 and amended October 1, 2002, March 29, 2008, and May 9, 2008
- Continuing to perform groundwater testing
- Implementing Interim Measures
  - East Plant Area
  - West Plant Area





# EAST PLANT AREA

RCRA CORRECTIVE ACTION/CERCLA REMOVAL ACTION

GM POWERTRAIN BEDFORD PLANT, BEDFORD, INDIANA



## East Plant Area Interim Measure

- Re-use of low PCB Removal Action soil
  - ongoing
- Select soil removal
  - >50 PPM removal complete in the East Plant Area and placed into the Vault
- >50 PPM Landfill Vault
  - Filling of the Vault is complete and Vault cover is almost complete
  - Permanent liner on the north section nearly completed.



## East Plant Area Interim Measure

- Cover System
  - Delayed while finalizing agreement with MLC
  - Continued working on Parcel 201 section
  - Majority of remaining soil placement/hauling will occur this year
  - Some areas still need creek soil as subgrade
  - Some areas need one or more of the cover layers
  - Any area not already covered by permanent liner currently has a temporary liner
- Perimeter Groundwater Collection System
  - Interim groundwater collection ongoing
- AOI 8 Collection System
  - More testing upcoming and the design to be finalized
- Long-term maintenance and monitoring
  - Following construction





# EAST PLANT AREA

RCRA CORRECTIVE ACTION/CERCLA REMOVAL ACTION

G M P O W E R T R A I N B E D F O R D P L A N T , B E D F O R D , I N D I A N A



Moving grading fill in the East Plant Area at AOI 15



# EAST PLANT AREA

RCRA CORRECTIVE ACTION / CERCLA REMOVAL ACTION

G M P O W E R T R A I N B E D F O R D P L A N T , B E D F O R D , I N D I A N A



Parcel 201 soil grading off of GM Drive



# WEST PLANT AREA

RCRA CORRECTIVE ACTION/CERCLA REMOVAL ACTION

GM POWERTRAIN BEDFORD PLANT, BEDFORD, INDIANA

- The former excavation in front of the plant will have a permanent vegetative and asphalt cover placed over top.





# PARCEL 400

RCRA CORRECTIVE ACTION/CERCLA REMOVAL ACTION

G M P O W E R T R A I N B E D F O R D P L A N T , B E D F O R D , I N D I A N A





# UPCOMING RCRA ACTIVITIES

RCRA CORRECTIVE ACTION/CERCLA REMOVAL ACTION

G M P O W E R T R A I N B E D F O R D P L A N T , B E D F O R D , I N D I A N A

## UPCOMING ACTIVITIES FOR 2010

- Truck transport of soil from the Peerless Road Bridge Area to the East Plant Area
- Complete Vault construction
- Complete majority of remaining East Plant Area Cover System
- Continue RFI groundwater monitoring
- Conduct additional bedrock studies at AOI 8
- Complete design of Pilot Perimeter Groundwater Collection Trench
- Continue road repair work, as needed
- Resume excavation and transport of soil from the creek area near the Peerless Road Bridge to the East Plant Area





# COMMUNITY RELATIONS ACTIVITIES

RCRA CORRECTIVE ACTION/CERCLA REMOVAL ACTION

G M P O W E R T R A I N B E D F O R D P L A N T , B E D F O R D , I N D I A N A

- Community meetings are held on a quarterly basis.
  - Presentations have been and will continue to be posted to the website.
  - People can always come to the field trailer and talk one-on-one or call Katie Kamm: (812) 277-8954
- Next meetings will be held in June 2010
- CLP Meetings to be held on March 19, 2010 and in June 2010



# COMMUNITY RELATIONS ACTIVITIES

RCRA CORRECTIVE ACTION/CERCLA REMOVAL ACTION

G M P O W E R T R A I N B E D F O R D P L A N T , B E D F O R D , I N D I A N A

- Project website at:  
<http://www.BedfordPowertrainCorrectiveAction.com>
- Quarterly Community Meetings are available on the website
- Public Information Repository (GM Plant) currently by appointment with Katie and repository publications are also available on the project website
- Community Liaison Panel (CLP) – members listed in minutes on website
- Periodic information sessions
- Periodic Project Fact Sheets (twenty-seven issued to date)
- Project Questions or Truck Traffic Issues contact Katie Kamm:  
(812) 277-8954