

RCRA FACILITY INVESTIGATION

QUARTERLY PROGRESS REPORT #27 FOURTH QUARTER 2007

**GM POWERTRAIN - BEDFORD FACILITY
105 GM DRIVE
BEDFORD, INDIANA**

EPA ID# IND006036099

**Prepared For:
General Motors Corporation**

JANUARY 14, 2008

REF. NO. 013968 (257)

This report is printed on recycled paper.

TABLE OF CONTENTS

	<u>Page</u>
1.0 <u>INTRODUCTION</u>	3
2.0 <u>LIST OF COMPLETED ACTIVITIES</u>	4
3.0 <u>SUMMARIES OF ALL CHANGES MADE IN THE CORRECTIVE ACTION (CA) DURING THE REPORTING PERIOD</u>	7
4.0 <u>COMMUNITY RELATIONS</u>	8
5.0 <u>CHANGES IN PERSONNEL DURING THE REPORTING PERIOD</u>	9
6.0 <u>PROJECTED WORK FOR THE NEXT REPORTING PERIOD</u>	10
7.0 <u>COPIES OF DAILY REPORTS, INSPECTION REPORTS, LABORATORY/MONITORING DATA</u>	11

LIST OF FIGURES

FIGURE 2.1	EAST PLANT AREA AIR SAMPLING LOCATIONS
FIGURE 7.1	PARCELS 384 AND 386 (VERIFICATION AREAS 501 AND 502) FINAL UNVALIDATED COMPOSITE SAMPLE RESULTS
FIGURE 7.2	PARCELS 384 AND 386 (VERIFICATION AREAS 503, 504, AND 508) FINAL UNVALIDATED COMPOSITE SAMPLE RESULTS
FIGURE 7.3	PARCELS 384 AND 386 (VERIFICATION AREAS 505 AND 506) FINAL UNVALIDATED COMPOSITE SAMPLE RESULTS
FIGURE 7.4	PARCELS 386, 387 AND 386 (VERIFICATION AREAS 500 AND 507) FINAL UNVALIDATED COMPOSITE SAMPLE RESULTS
FIGURE 7.5	PARCEL 393 (VERIFICATION AREAS 509, 510, AND 511) FINAL UNVALIDATED COMPOSITE SAMPLE RESULTS
FIGURE 7.6	PARCEL 201 DELINEATION SAMPLE RESULTS

LIST OF TABLES

TABLE 2.1	VALIDATED AIR MONITORING RESULTS - PCB
TABLE 7.1	NORTHERN TRIBUTARY VALIDATED VERIFICATION SAMPLE ANALYTICAL RESULTS SUMMARY
TABLE 7.2	PARCEL 201 VALIDATED DELINEATION SAMPLE ANALYTICAL RESULTS SUMMARY

**QUARTERLY PROGRESS REPORT
DISTRIBUTION LIST**

U.S. EPA - Waste, Pesticide and Toxins Division, Project Manager	Peter Ramanauskas (2 copies)
U.S. EPA - Emergency Response Branch, On-Scene Coordinator	Brad Stimple
TN and Associates, U.S. EPA Consultant	Stacy DeLaReintrie
Earth Tech, U.S. EPA Consultant	John Bassett
Indiana Department of Environmental Management	Gerald O'Callaghan (5 copies)
U.S. Fish and Wildlife Service	Dan Sparks
GM WFG Remediation	Cheryl Hiatt/Ed Peterson
CRA, Project Coordinator	James McGuigan
CRA, Project Geologist	Bill Steinmann
CRA, Oversight Engineer	Katie Kamm
CRA, QA/QC Officer	Jeff Nichols (3 copies)
ENVIRON	Steve Song

1.0 INTRODUCTION

This Quarterly Progress Report is submitted in accordance with the Bedford Performance-Based Corrective Action Agreement (Agreement) between the United States Environmental Protection Agency (U.S. EPA) and General Motors Corporation (GM), executed on March 20, 2001, and modified on October 1, 2002. This report covers the period of the fourth calendar quarter of 2007 for the GM Powertrain - Bedford Facility (Facility), Bedford, Indiana. Some of the activities conducted as part of the overall Resource Conservation and Recovery Act (RCRA) Corrective Action (CA) work are being addressed under the Comprehensive Environmental Response, Compensation, and Liability Act (CERCLA) Removal Action (RA) Program, pursuant to the Administrative Order on Consent (AOC) between U.S. EPA and GM (effective July 31, 2003). These activities are described in more detail within the CERCLA Monthly Progress Reports referred to herein.

The next quarterly progress report, covering the First Quarter 2008, will be submitted on or before April 15, 2008.

2.0 LIST OF COMPLETED ACTIVITIES

The following activities took place and the following documents were prepared and distributed during this quarter:

- Conference calls were held with U.S. EPA, Indiana Department of Environmental Management (IDEM), the Agency for Toxic Substance and Disease Registry (ATSDR) and Indiana State Department of Health (ISDH) on October 1, 16, and 30, 2007; November 14 and 29, 2007; and December 18, 2007, to discuss project progress (United States Fish and Wildlife Service (USFWS) was also invited to attend the update calls);
- Information sessions for the public were held at the Facility October 10, and December 6, 2007. The Community Liaison Panel (CLP) met December 14, 2007;
- Fact Sheet 18 was released to the Public and U.S. EPA on November 26, 2007;
- A series of aerial photographs taken of the Facility on September 18, 2007, was submitted to U.S. EPA and IDEM on October 15, 2007;
- Air monitoring was conducted for construction activities in the East Plant Area, and the Northern Tributary. Air monitoring results completed for work in the East Plant Area are presented on Tables 2.1 (PCB) and 2.2 (TSP). Figure 2.1 presents the sampling locations in the Northern Tributary and the East Plant Area;
- Placement of creek RA <50 mg/kg PCB material in the East Plant Area continued during the Fourth Quarter of 2007;
- On October 9, 2007, a letter was submitted to U.S. EPA requesting a modification to the vault permit to accept >50 mg/kg PCB material from the West Plant Area across from GM Drive and the Parcel 201 area;
 - On October 22, 2007, an email was submitted to U.S. EPA proposing additional potential areas to place subgrade fill material within the East Plant Area.
 - A letter was submitted to U.S. EPA on November 15, 2007, requesting a modification to the Vault permit to not place topsoil on the Vault Cover System in areas where grading fill will be placed during construction of the Final East Plant Area Cover System;
 - On November 30, 2007, U.S. EPA was notified of a design change to the East Plant Area Cover System and a letter was submitted requesting the replacement of common fill material with clay. Two Hydrologic Evaluation of Landfill Performance (HELP) model runs were also submitted as attachments to demonstrate how the change might affect the Cover (it does not);

- An update of the Vault leachate collection system (LCS) and leak detection system (LDS) sample results was emailed to U.S. EPA on December 18, 2007;
- Additional delineation samples were collected on Parcel 201 in November and December 2007;
- The draft East Plant Area Groundwater Collection Trench design report was submitted to U.S. EPA on November 27, 2007;
- Excavation being conducted under the Northern Tributary Interim Measure (IM) Work Plan continued during the Fourth Quarter of 2007. Soils greater than or equal to 50 mg/kg PCBs were placed in the vault and stockpiled material sampled and found to be less than 50 mg/kg PCBs was moved to the East Plant Area for use as grading fill;
 - Northern Tributary material greater than or equal to 50 mg/kg PCBs was placed in the vault and stockpiled soil found to be less than 50 mg/kg PCBs was moved to the East Plant Area for use as grading fill;
 - U.S. EPA was notified of a minor fuel spill in the Northern Tributary on October 9, 2007, which occurred as a result of single vehicle accident involving a haul truck. The spill was contained and the impacted soil was excavated and disposed of properly. The spill was reported to National Response Center (NRC) and IDEM;
 - Photographs depicting the excavation progress of the Northern Tributary were submitted to U.S. EPA on November 9, 2007, and December 18, 2007.
 - Information regarding samples collected from a seep within the Northern Tributary prior to and post remediation were submitted to U.S. EPA and IDEM on November 9, 2007;
- A letter was submitted to IDEM on November 21, 2007, in response to a request for information from IDEM on November 18, 2007, regarding the 401 Water Quality Certification for the RA on portions of Bailey's Branch and Pleasant Run Creeks;
- U.S. EPA was notified on December 10, 2007, of the relocation of the trailer complex across the street from the current location;
- An overflow of the equalization tank of the seeps and springs Water Treatment Facility was reported to the NRC, IDEM, and U.S. EPA. Approximately 2,888 gallons were discharged into a bermed ditch which contained the release for subsequent treatment;
- On December 3, 2007, surface water samples were collected from Tributary 3 and tested for PCBs. Preliminary results submitted on December 12, 2007;
- East Plant Area construction meetings for the reporting period have been held informally daily and formally weekly. Meetings with ENTACT Environmental Services (ENTACT) and Severson Environmental Services (SES) to discuss the East

Plant Area are generally held on Tuesdays. East Plant Area meetings were held on: October 2, 9, 16, 23, and 30, 2007; November 6, 13, and 20, 2007; and December 4, and 11, 2007.

The September 2007, October 2007, and November 2007 CERCLA RA Monthly Progress Reports were submitted during the Fourth Quarter of 2007. Quarterly Progress Report #26 for the Third Quarter 2007 was submitted October 12, 2007.

3.0 **SUMMARIES OF ALL CHANGES MADE IN THE CORRECTIVE ACTION (CA) DURING THE REPORTING PERIOD**

The following changes were made to the CA during the reporting period:

- Approval was received from U.S. EPA to bury the washout material in Tributary 3 in place on October 1, 2007;
- Submission of a letter to U.S. EPA requesting a permit to modify the Vault Permit on October 9, 2007;
- Submission of a letter to U.S. EPA requesting a permit to modify the Vault Cover System on November 15, 2007;
- Submission of a design change to U.S. EPA of the East Plant Area Cover System on November 30, 2007;

4.0 COMMUNITY RELATIONS

GM continues to maintain the toll free information telephone number. Individual meetings can also be arranged to discuss sampling results with individual residents as requested.

Quarterly meetings to review project status, are held both with the neighbors along the creek and around the plant, as well as with the general public. Quarterly meetings were held during this reporting period on October 10, and 11, 2007, and December 5, and 6, 2007, at the Bedford Facility. The meetings were held from 6:30 PM to 8:00 PM at the Bedford Facility as a regular information session. Presentations for the meetings are posted on the web site at www.bedfordpowertraincorrectiveaction.com. The next set of public meetings will be held in March 2008 on a date to be determined.

Fact Sheet 18 was issued November 26, 2007.

The CLP meeting occurred in this quarter on December 14, 2007. The CLP was formed to provide additional communication avenues for the community and the meetings are currently being held at the GM Facility approximately every three months or more frequently if information on the project changes significantly. The CLP meeting minutes are posted on the GM website at www.bedfordpowertraincorrectiveaction.com. The next CLP meeting is scheduled for March 2008 on a date to be determined.

The Information Center, located at the plant lobby, is available by appointment through Ms. Becki Akers, GM Communications, at the project toll free number 866-223-0856. The repository located at the Bedford Public Library remains open at normal business hours. All data in the repository are also located on the aforementioned web site.

5.0 CHANGES IN PERSONNEL DURING THE REPORTING PERIOD

A number of field personnel have been rotated in and out of the field activities.

6.0 PROJECTED WORK FOR THE NEXT REPORTING PERIOD

Work projected for the next reporting period includes:

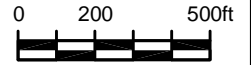
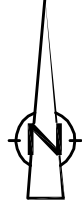
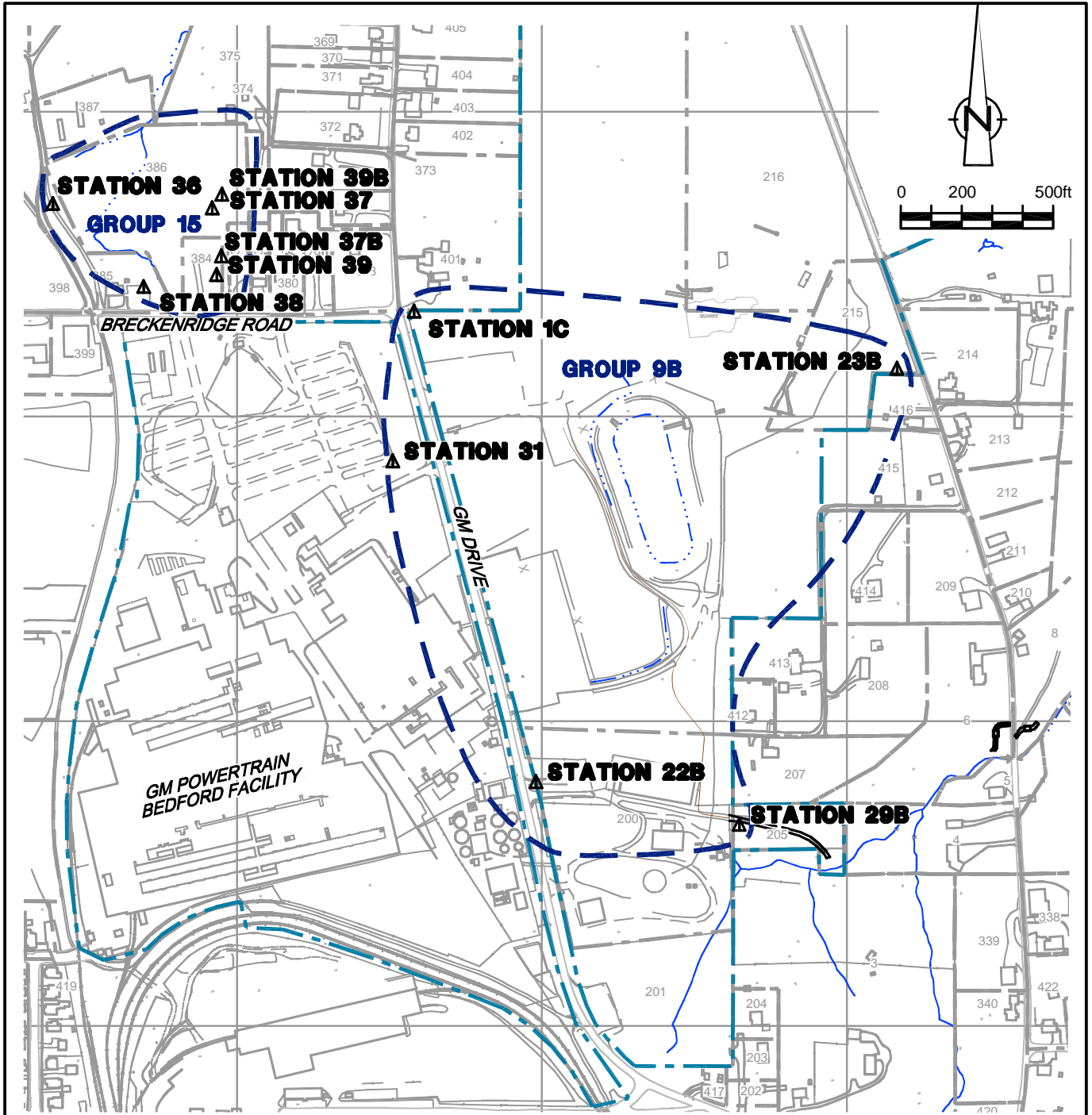
- Conducting a neighborhood information session in March 2008 on a date to be determined;
- Conducting a general public information session in March 2008 on a date to be determined;
- Conducting a Community Liaison Panel Meeting in March 2008 on a date to be determined;
- Preparing and distributing Fact Sheet 19 in the next quarter;
- Continuing with RA activities on downstream parcels;
- Continuing the evaluation of RFI soil and groundwater data as needed;
- Completing work as outlined in the Northern Tributary IM Work Plan;
- Completing the Western Tributary IM Construction Certification Report;
- Completing the Northern Tributary IM Construction Certification Report;
- Commencing work as outlined in the West Plant Area IM Work Plan, pending Work Plan and excavation design approvals;
- Commencing work as outlined in the Parcel 400 IM Work Plan, pending Work Plan approval;
- Submitting a Work Plan and excavation design plans for approval;
- Completing additional coreholes along the newly proposed alignment of the groundwater collection trench at Parcel 201;
- Continuing construction of the vault cover;
- Continuing placement of the <50 mg/kg PCB RA soils in the East Plant Area as grading fill beneath the landfill cover system;
- Modifying the East Plant Cover System design to address additional soil placement (as needed); and
- Submitting a revised AOI 8 NAPL recovery plan.

**7.0 COPIES OF DAILY REPORTS, INSPECTION REPORTS,
LABORATORY/MONITORING DATA**

Northern Tributary verification sample locations are presented on Figures 7.1, 7.2, 7.3, 7.4, and 7.5. Sample results validated to date are presented on Table 7.1.

Parcel 201 delineation sample locations are presented on Figure 7.6. Validated sample results are presented on Table 7.2.

Packages of analytical data from creek remediation verification sampling have been submitted monthly as they become available, after validation, in the monthly reports prepared for the CERCLA AOC, and will continue to be submitted during the next reporting period. Any other sampling data collected during the quarter will be submitted under separate cover once validation is completed.



SOURCE: BASE MAP COMPLETED BY AIR-LAND SURVEYS, FLINT, MI, APRIL 2001.

NOTES: 1) PROPERTY BOUNDARY LOCATIONS APPROXIMATED FROM THE LAWRENCE COUNTY SURVEY PLATS. LOCATIONS MAY NOT ACCURATELY REPRESENT THE TRUE BOUNDARIES

LEGEND

- | | | | |
|--|------------------------------------|--|---|
| | EXISTING BUILDINGS | | APPROXIMATE GM PROPERTY BOUNDARY |
| | FENCE LINE | | STATION 23 AIR SAMPLING LOCATION |
| | RAILROAD TRACKS | | AIR SAMPLING GROUP |
| | DIRT ROADS | | |
| | ROADS / PAVED AREAS | | |
| | APPROXIMATE SURFACE WATER LOCATION | | |
| | APPROXIMATE PARCEL BOUNDARY | | |

figure 2.1

**EAST PLANT AREA AIR MONITORING STATIONS
 QUARTERLY PROGRESS REPORT No.27
 GM POWERTRAIN BEDFORD FACILITY
 Bedford, Indiana**



EXCAVATION FLOOR SAMPLE RESULTS

Verification Area	Grid	Sampling Round			
		R1	Result (mg/kg)	FINAL	Result (mg/kg)
501	A	S-384-111207-AH-26179	0.36	S-384-111207-AH-26179	0.36
	B	S-384-111207-AH-26187	2.49	-	-
	C	S-386-091107-AH-26015	1.26	S-386-091107-AH-26015	1.26
	D	S-386-091107-AH-26016	0.18	S-386-091107-AH-26016	0.18
	E	S-384-111207-AH-26180	0.23	S-384-111207-AH-26180	0.23
		(S-384-111207-AH-26181)	0.47	(S-384-111207-AH-26181)	0.47
	F	EXCAVATED TO BEDROCK		EXCAVATED TO BEDROCK	
	G	S-386-091107-AH-26014	0.15 J	S-386-091107-AH-26014	0.15 J
H	S-386-091107-AH-26017	0.13 J	S-386-091107-AH-26017	0.13 J	
UCL Calculations					

Verification Area	Grid	Sampling Round			
		R1	Result (mg/kg)	FINAL	Result (mg/kg)
502	A	S-384-111207-AH-26182	0.05	S-384-111207-AH-26182	0.05
	B	EXCAVATED TO BEDROCK		EXCAVATED TO BEDROCK	
	C	S-386-091907-AH-26023	0.53	S-386-091907-AH-26023	0.53
	D	S-386-091907-AH-26024	0.36	S-386-091907-AH-26024	0.36
	E	S-384-111207-AH-26183	0.29	S-384-111207-AH-26183	0.29
	F	EXCAVATED TO BEDROCK		EXCAVATED TO BEDROCK	
	G	EXCAVATED TO BEDROCK		EXCAVATED TO BEDROCK	
	H	S-386-100207-AH-26040	0.32	S-386-100207-AH-26040	0.32
	(S-386-100207-AH-26041)	0.31	(S-386-100207-AH-26041)	0.31	
UCL Calculations		Not Required Based on Sample Results			

- GENERAL NOTES:
- Cleanup Criteria
 - Soils to ≤ 1.8 mg/kg.
 - if all results are < 5.0 mg/kg, the cleanup objective can be verified in the Verification Area (approximately 100ft x 200ft) by calculating the Upper Confidence Limit (UCL) of the average concentration using statistics, if the UCL is ≤ 1.8 mg/kg the cleanup objective will be met for the given Verification Area. A value of 0 mg/kg is used in the UCL calculation for sample grids excavated to bedrock.
 - Sediments to ≤ 1 mg/kg.
 - Composite sidewall samples were collected in the location where the sidewall of the excavation exceeded 6 inches in height.
 - The surficial confirmation samples (8 composites per Verification Area except where bedrock is encountered) were collected after the soil/sediment removal was performed.
 - A value of 0 mg/kg is used for ND in the calculation of Total PCBs.
 - For UCL calculations, Aroclors 1016, 1221, and 1232 have been assigned a ND value of 0 mg/kg based upon their lack of presence in the data.
 - UCL calculations are performed on Aroclors 1242, 1248, 1254, and 1260 using the half the quantitation limit where ND results are reported.
 - UCL calculations included both floor and sidewall samples.
 - The sampling round (e.g. R1, R2, etc.) correlates to Verification Area grids or sidewalls where additional rounds of excavation were completed due to exceedances of the cleanup criteria.
 - Property boundary locations approximated from the Lawrence County survey plats. Locations may not accurately represent the true property boundaries.
 - The verification figure is presented to show progress for this reporting period. Excavation verification may not be complete as statistical analysis or further excavation may be required.

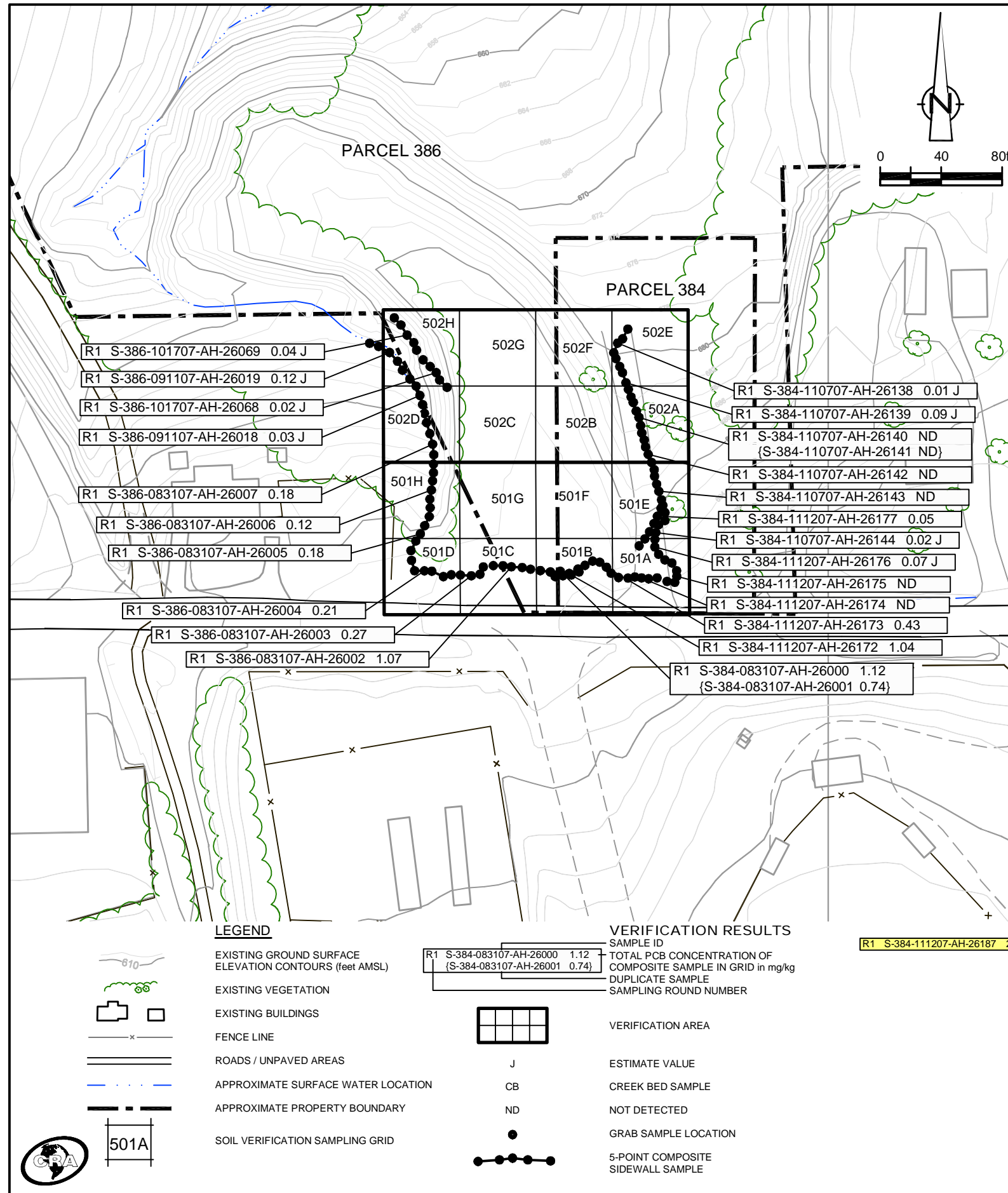


figure 7.1
 PARCELS 384 AND 386 (VERIFICATION AREAS 501 AND 502)
 FINAL UNVALIDATED COMPOSITE SAMPLE RESULTS
 POST - EXCAVATION SUMMARY
 GM POWERTRAIN BEDFORD FACILITY
 Bedford, Indiana

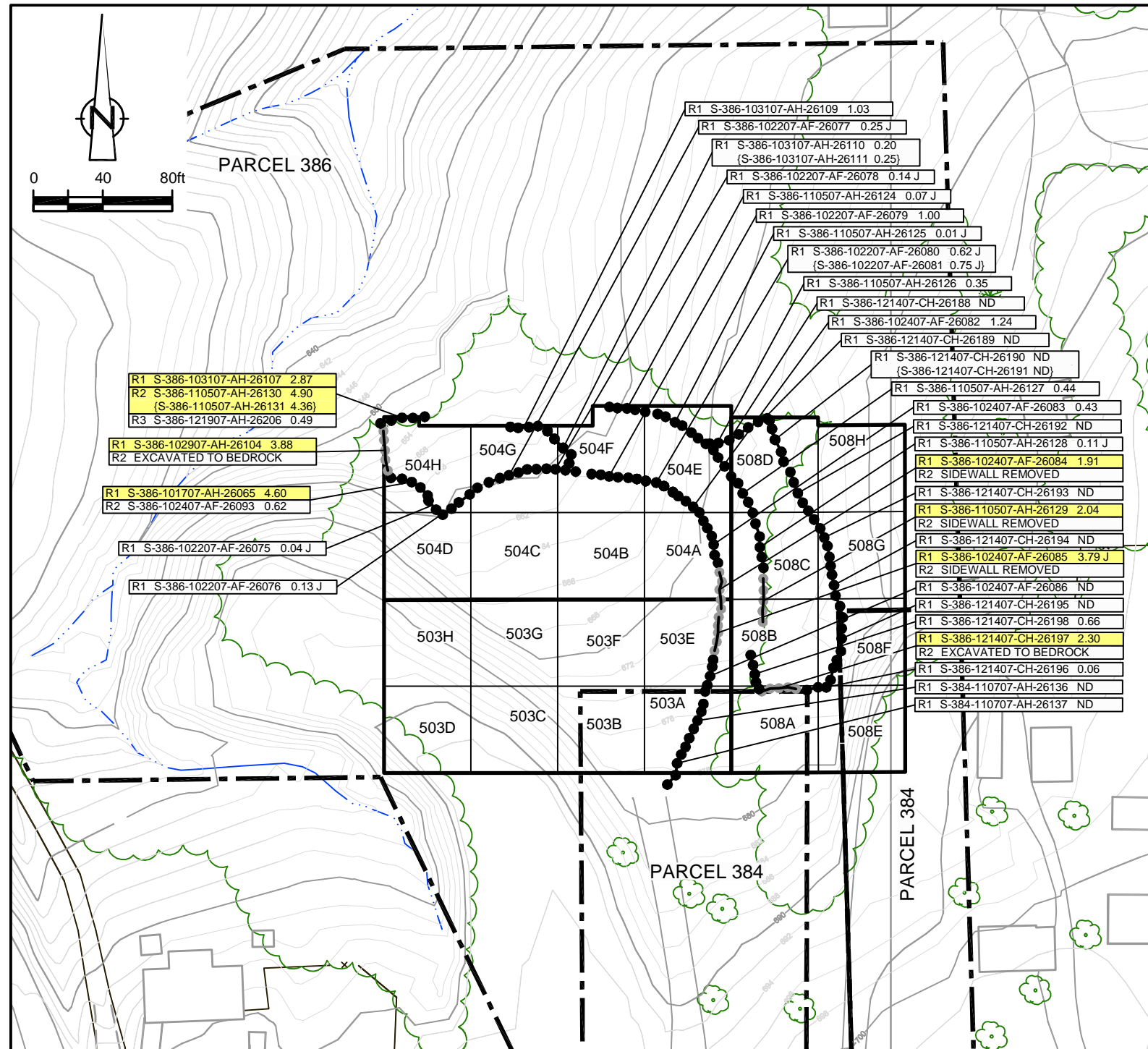
EXCAVATION FLOOR SAMPLE RESULTS

Verification Area	Grid	Sampling Round			
		R1		FINAL	
		Sample ID	Result (mg/kg)	Sample ID	Result (mg/kg)
503	A	S-384-111207-AH-26184	0.21	S-384-111207-AH-26184	0.21
	B	-	-	-	-
	C	-	-	-	-
	D	-	-	-	-
	E	-	-	-	-
	F	-	-	-	-
	G	-	-	-	-
	H	-	-	-	-
UCL Calculations					

Verification Area	Grid	Sampling Round					
		R1		R2		FINAL	
		Sample ID	Result (mg/kg)	Sample ID	Result (mg/kg)	Sample ID	Result (mg/kg)
504	A	S-386-102407-AF-26087	12.87	EXCAVATED TO BEDROCK	EXCAVATED TO BEDROCK	-	-
	B	-	-	-	-	-	-
	C	-	-	-	-	-	-
	D	-	-	-	-	-	-
	E	S-386-102407-AF-26088	1.14	-	-	S-386-102407-AF-26088	1.14
	F	S-386-102407-AF-26089	1.09	-	-	S-386-102407-AF-26089	1.09
	G	S-386-102407-AF-26090 (S-386-102407-AF-26091 16.50)	27.00	S-386-103107-AH-26115	1.03	S-386-103107-AH-26115	1.03
	H	S-386-102407-AF-26092	11.80	S-386-103107-AH-26116	1.39	S-386-103107-AH-26116	1.39
UCL Calculations							

Verification Area	Grid	Sampling Round					
		R1		R2		FINAL	
		Sample ID	Result (mg/kg)	Sample ID	Result (mg/kg)	Sample ID	Result (mg/kg)
508	A	S-384-121907-AH-26200 (S-384-121907-AH-26201 0.52)	1.14	-	-	S-384-121907-AH-26200	1.14
	B	S-386-111207-AH-26185	7.24	EXCAVATED TO BEDROCK	EXCAVATED TO BEDROCK	-	-
	C	S-386-111207-AH-26186	12.98	EXCAVATED TO BEDROCK	EXCAVATED TO BEDROCK	-	-
	D	S-386-121907-AH-26199	0.02 J	-	-	S-386-121907-AH-26199	0.02 J
	E	S-382-121907-AH-26202	0.94	-	-	S-382-121907-AH-26202	0.94
	F	S-382-121907-AH-26203	0.61	-	-	S-382-121907-AH-26203	0.61
	G	S-386-121907-AH-26204	ND	-	-	S-386-121907-AH-26204	ND
	H	S-386-121907-AH-26205	ND	-	-	S-386-121907-AH-26205	ND
UCL Calculations							

- GENERAL NOTES:
- Cleanup Criteria
 - Soils to ≤ 1.8 mg/kg.
 - if all results are < 5.0 mg/kg, the cleanup objective can be verified in the Verification Area (approximately 100ft x 200ft) by calculating the Upper Confidence Limit (UCL) of the average concentration using statistics, if the UCL is ≤ 1.8 mg/kg the cleanup objective will be met for the given Verification Area. A value of 0 mg/kg is used in the UCL calculation for sample grids excavated to bedrock.
 - Sediments to ≤ 1 mg/kg.
 - Composite sidewall samples were collected in the location where the sidewall of the excavation exceeded 6 inches in height.
 - The surficial confirmation samples (8 composites per Verification Area except where bedrock is encountered) were collected after the soil/sediment removal was performed.
 - A value of 0 mg/kg is used for ND in the calculation of Total PCBs.
 - For UCL calculations, Aroclors 1016, 1221, and 1232 have been assigned a ND value of 0 mg/kg based upon their lack of presence in the data.
 - UCL calculations are performed on Aroclors 1242, 1248, 1254, and 1260 using the half the quantitation limit where ND results are reported.
 - UCL calculations included both floor and sidewall samples.
 - The sampling round (e.g. R1, R2, etc.) correlates to Verification Area grids or sidewalls where additional rounds of excavation were completed due to exceedances of the cleanup criteria.
 - Property boundary locations approximated from the Lawrence County survey plats. Locations may not accurately represent the true property boundaries.
 - The verification figure is presented to show progress for this reporting period. Excavation verification may not be complete as statistical analysis or further excavation may be required.



LEGEND

- EXISTING GROUND SURFACE
- ELEVATION CONTOURS (feet AMSL)
- EXISTING VEGETATION
- EXISTING BUILDINGS
- FENCE LINE
- ROADS / UNPAVED AREAS
- APPROXIMATE SURFACE WATER LOCATION
- APPROXIMATE PROPERTY BOUNDARY
- SOIL VERIFICATION SAMPLING GRID

VERIFICATION RESULTS

- SAMPLE ID
- TOTAL PCB CONCENTRATION OF COMPOSITE SAMPLE IN GRID in mg/kg
- DUPLICATE SAMPLE
- SAMPLING ROUND NUMBER
- VERIFICATION AREA
- J ESTIMATE VALUE
- CB CREEK BED SAMPLE
- ND NOT DETECTED
- GRAB SAMPLE LOCATION
- 5-POINT COMPOSITE SIDEWALL SAMPLE

- 5-POINT COMPOSITE SIDEWALL SAMPLE REMOVED OR EXCAVATED TO BEDROCK
- SAMPLE RESULT EXCEEDS CLEANUP CRITERIA

figure 7.2
**PARCELS 384 AND 386 (VERIFICATION AREAS 503, 504, AND 508)
 FINAL UNVALIDATED COMPOSITE SAMPLE RESULTS
 POST - EXCAVATION SUMMARY
 GM POWERTRAIN BEDFORD FACILITY
 Bedford, Indiana**

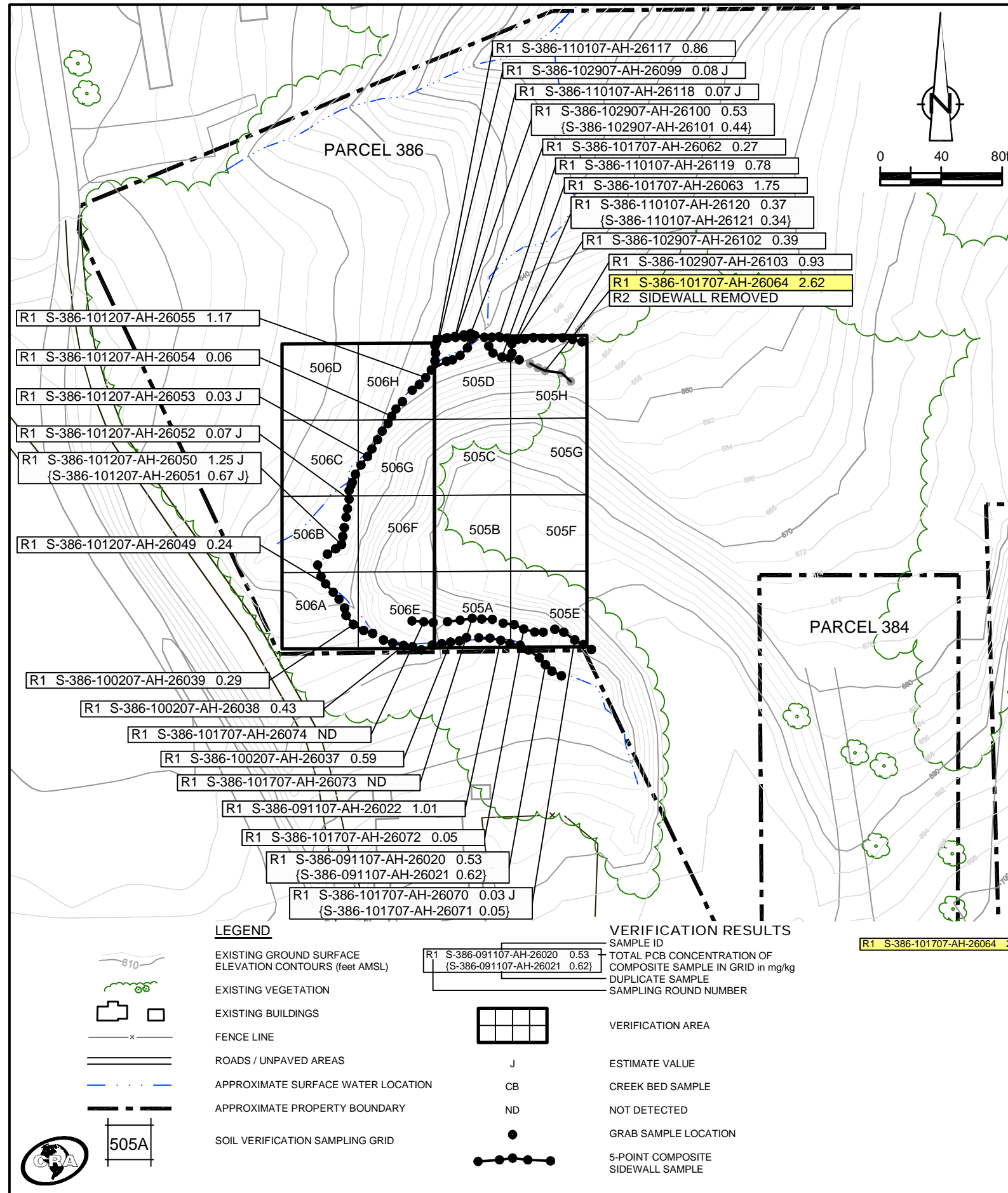
EXCAVATION FLOOR SAMPLE RESULTS

Verification Area	Grid	Sampling Round							
		R1		R2		R3		FINAL	
		Sample ID	Result (mg/kg)	Sample ID	Result (mg/kg)	Sample ID	Result (mg/kg)	Sample ID	Result (mg/kg)
505	A	S-386-091907-AH-26025	1.40	-	-	-	-	S-386-091907-AH-26025	1.40
	B	-	-	-	-	-	-	-	-
	C	-	-	-	-	-	-	-	-
	D	S-386-101707-AH-26066	3.10 J	S-386-102907-AH-26106	3.55	EXCAVATED TO BEDROCK	-	EXCAVATED TO BEDROCK	-
	E	S-386-111207-AH-26178	0.38	-	-	-	-	S-386-111207-AH-26178	0.38
	F	-	-	-	-	-	-	-	-
	G	-	-	-	-	-	-	-	-
	H	S-386-101707-AH-26067	5.30 J	S-386-102907-AH-26105	0.98	-	-	S-386-102907-AH-26105	0.98
UCL Calculations									

Verification Area	Grid	Sampling Round			
		R1		FINAL	
		Sample ID	Result (mg/kg)	Sample ID	Result (mg/kg)
506	A	S-386-101207-AH-26056	0.25 J	S-386-101207-AH-26056	0.25 J
	B	S-386-101207-AH-26057	0.57	S-386-101207-AH-26057	0.57
	C	S-386-101207-AH-26058	0.03 J	S-386-101207-AH-26058	0.03 J
	D	S-386-101207-AH-26059	ND	S-386-101207-AH-26059	ND
	E	S-386-091907-AH-26026	0.90	S-386-091907-AH-26026	0.90
	F	-	-	-	-
	G	-	-	-	-
	H	S-386-101207-AH-26060 (S-386-101207-AH-26061)	0.01 J 0.02 J	S-386-101207-AH-26060 (S-386-101207-AH-26061)	0.01 J 0.02 J
UCL Calculations		Not Required Based on Sample Results			

GENERAL NOTES:

- (1) Cleanup Criteria
 - a.) Soils to ≤ 1.8 mg/kg.
 - if all results are < 5.0 mg/kg, the cleanup objective can be verified in the Verification Area (approximately 100ft x 200ft) by calculating the Upper Confidence Limit (UCL) of the average concentration using statistics, if the UCL is ≤ 1.8 mg/kg the cleanup objective will be met for the given Verification Area. A value of 0 mg/kg is used in the UCL calculation for sample grids excavated to bedrock.
 - b.) Sediments to ≤ 1 mg/kg.
- (2) Composite sidewall samples were collected in the location where the sidewall of the excavation exceeded 6 inches in height.
- (3) The surficial confirmation samples (8 composites per Verification Area except where bedrock is encountered) were collected after the soil/sediment removal was performed.
- (4) A value of 0 mg/kg is used for ND in the calculation of Total PCBs.
- (5) For UCL calculations, Aroclors 1016, 1221, and 1232 have been assigned a ND value of 0 mg/kg based upon their lack of presence in the data.
 - UCL calculations are performed on Aroclors 1242, 1248, 1254, and 1260 using the half the quantitation limit where ND results are reported.
 - UCL calculations included both floor and sidewall samples.
- (6) The sampling round (e.g. R1, R2, etc.) correlates to Verification Area grids or sidewalls where additional rounds of excavation were completed due to exceedances of the cleanup criteria.
- (7) Property boundary locations approximated from the Lawrence County survey plats. Locations may not accurately represent the true property boundaries.
- (8.) The verification figure is presented to show progress for this reporting period. Excavation verification may not be complete as statistical analysis or further excavation may be required.



R1 S-386-101707-AH-26064 2.62 SAMPLE RESULT EXCEEDS CLEANUP CRITERIA

figure 7.3
 PARCELS 384 AND 386 (VERIFICATION AREAS 505 AND 506)
 FINAL UNVALIDATED COMPOSITE SAMPLE RESULTS
 POST - EXCAVATION SUMMARY
 GM POWERTRAIN BEDFORD FACILITY
 Bedford, Indiana

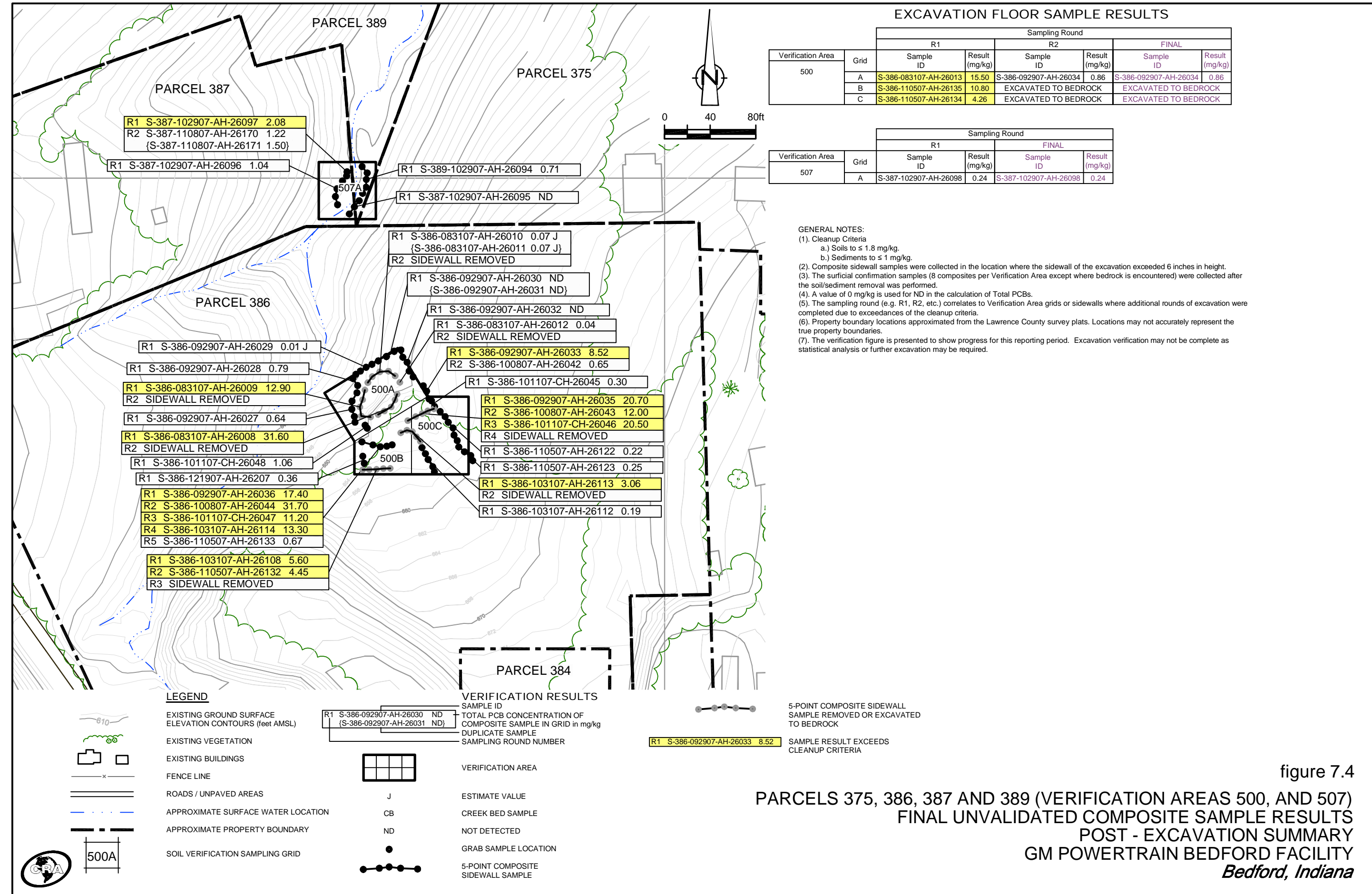


figure 7.4
 PARCELS 375, 386, 387 AND 389 (VERIFICATION AREAS 500, AND 507)
 FINAL UNVALIDATED COMPOSITE SAMPLE RESULTS
 POST - EXCAVATION SUMMARY
 GM POWERTRAIN BEDFORD FACILITY
 Bedford, Indiana

EXCAVATION FLOOR SAMPLE RESULTS

Verification Area	Grid	Sampling Round			
		R1		FINAL	
		Sample ID	Result (mg/kg)	Sample ID	Result (mg/kg)
509	A	S-393-110807-AH-26160	0.05 J	S-393-110807-AH-26160	0.05 J
		(S-393-110807-AH-26161)	(0.05 J)	(S-393-110807-AH-26161)	(0.05 J)

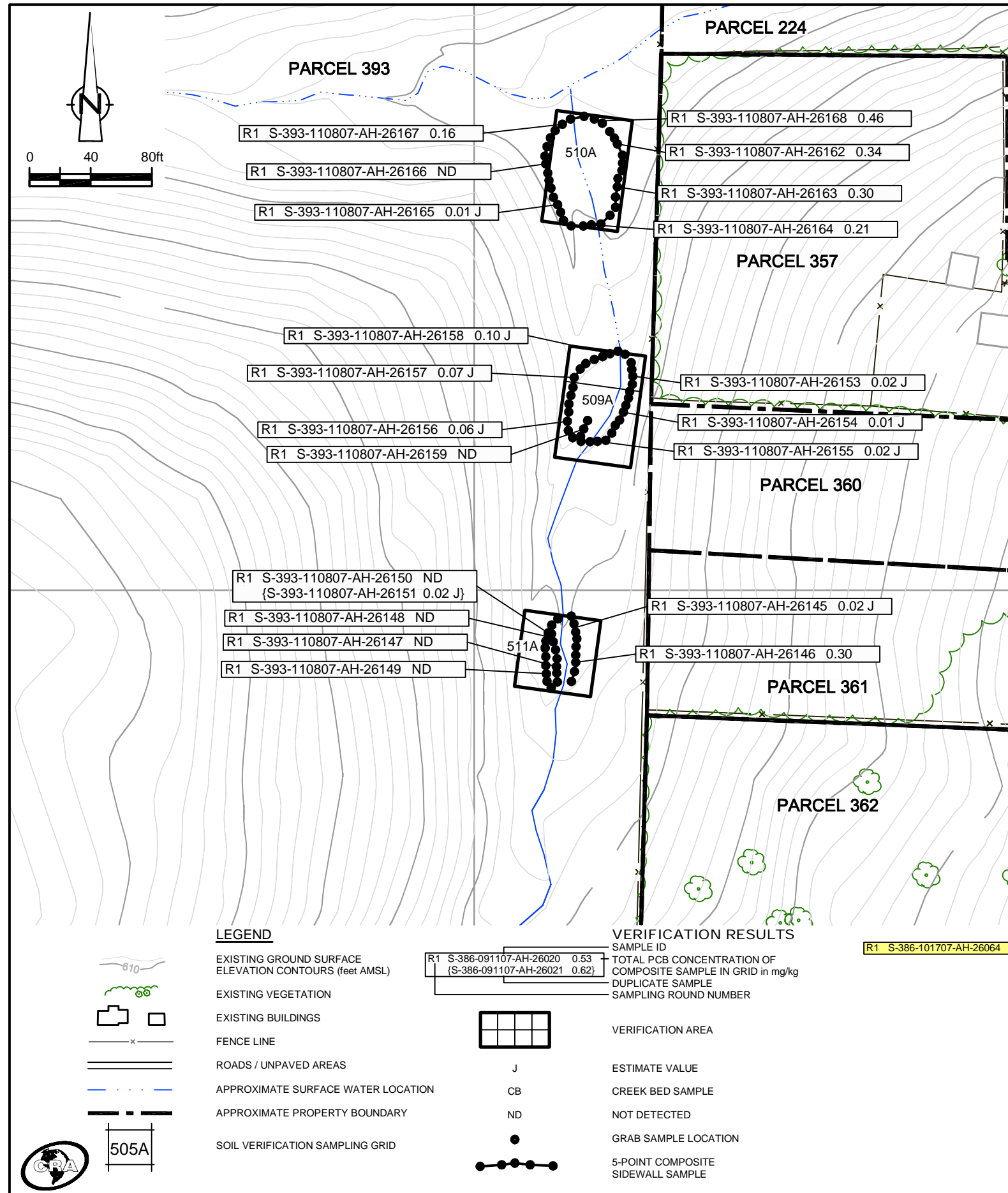
Verification Area	Grid	Sampling Round			
		R1		FINAL	
		Sample ID	Result (mg/kg)	Sample ID	Result (mg/kg)
510	A	S-393-110807-AH-26169	0.37	S-393-110807-AH-26169	0.37

Verification Area	Grid	Sampling Round			
		R1		FINAL	
		Sample ID	Result (mg/kg)	Sample ID	Result (mg/kg)
511	A	S-393-110807-AH-26152	0.07 J	S-393-110807-AH-26152	0.07 J

GENERAL NOTES:

- Cleanup Criteria
 - Soils to ≤ 1.8 mg/kg.
 - Sediments to ≤ 1 mg/kg.
- Composite sidewall samples were collected in the location where the sidewall of the excavation exceeded 6 inches in height.
- The surficial confirmation samples (8 composites per Verification Area except where bedrock is encountered) were collected after the soil/sediment removal was performed.
- A value of 0 mg/kg is used for ND in the calculation of Total PCBs.
- The sampling round (e.g. R1, R2, etc.) correlates to Verification Area grids or sidewalls where additional rounds of excavation were completed due to exceedances of the cleanup criteria.
- Property boundary locations approximated from the Lawrence County survey plats. Locations may not accurately represent the true property boundaries.
- The verification figure is presented to show progress for this reporting period. Excavation verification may not be complete as statistical analysis or further excavation may be required.

figure 7.5
 PARCEL 393 (VERIFICATION AREAS)
 FINAL UNVALIDATED COMPOSITE SAMPLE RESULTS
 POST - EXCAVATION SUMMARY
 GM POWERTRAIN BEDFORD FACILITY
 Bedford, Indiana



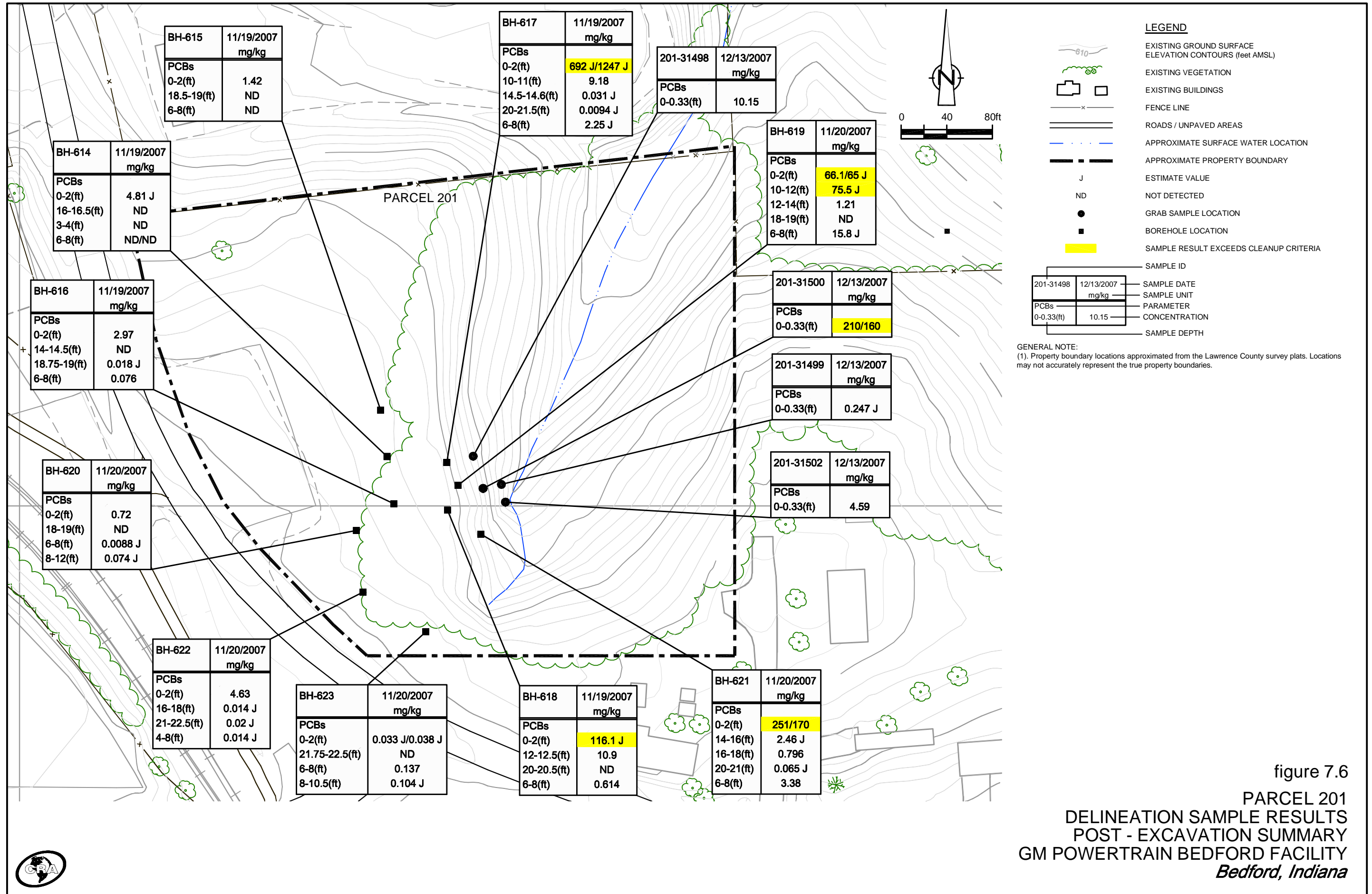


figure 7.6
 PARCEL 201
 DELINEATION SAMPLE RESULTS
 POST - EXCAVATION SUMMARY
 GM POWERTRAIN BEDFORD FACILITY
 Bedford, Indiana



TABLE 2.1 - GROUP 9B

SUMMARY OF PCB AIR MONITORING ANALYTICAL RESULTS - OCTOBER TO DECEMBER 2007
 GM POWERTRAIN BEDFORD FACILITY
 BEDFORD, INDIANA

Unit_ID	STATION 1C PUF-16	STATION 23B PUF-2	STATION 29B PUF-5	STATION 31 PUF-6
10/1/2007				
Total Volume(m3)	452	NR	NR	NR
Total PCB Mass(ug)	43	NR	NR	NR
PCB Concentration(ug/m3)	0.0951	NR	NR	NR
Percent of Allowable(%)	10	NR	NR	NR
10/8/2007				
Total Volume(m3)	NR	345	NR	NR
Total PCB Mass(ug)	NR	19	NR	NR
PCB Concentration(ug/m3)	NR	0.0551	NR	NR
Percent of Allowable(%)	NR	6	NR	NR
10/15/2007				
Total Volume(m3)	454	NR	NR	NR
Total PCB Mass(ug)	36	NR	NR	NR
PCB Concentration(ug/m3)	0.0793	NR	NR	NR
Percent of Allowable(%)	8	NR	NR	NR
10/30/2007				
Total Volume(m3)	NR	NR	381	NR
Total PCB Mass(ug)	NR	NR	12	NR
PCB Concentration(ug/m3)	NR	NR	0.0315	NR
Percent of Allowable(%)	NR	NR	3	NR
11/8/2007				
Total Volume(m3)	NR	NR	379	NR
Total PCB Mass(ug)	NR	NR	13	NR
PCB Concentration(ug/m3)	NR	NR	0.0343	NR
Percent of Allowable(%)	NR	NR	3	NR
11/15/2007				
Total Volume(m3)	444	NR	NR	NR
Total PCB Mass(ug)	1.2	NR	NR	NR
PCB Concentration(ug/m3)	0.0027	NR	NR	NR
Percent of Allowable(%)	0	NR	NR	NR

TABLE 2.1 - GROUP 9B

SUMMARY OF PCB AIR MONITORING ANALYTICAL RESULTS - OCTOBER TO DECEMBER 2007
 GM POWERTRAIN BEDFORD FACILITY
 BEDFORD, INDIANA

Unit_ID	STATION 1C PUF-16	STATION 23B PUF-2	STATION 29B PUF-5	STATION 31 PUF-6
11/29/2007				
Total Volume(m3)	NR	NR	365	NR
Total PCB Mass(ug)	NR	NR	4.8	NR
PCB Concentration(ug/m3)	NR	NR	0.0132	NR
Percent of Allowable(%)	NR	NR	1	NR
12/7/2007				
Total Volume(m3)	NR	NR	NR	426
Total PCB Mass(ug)	NR	NR	NR	3.2
PCB Concentration(ug/ m3)	NR	NR	NR	0.0075
Percent of Allowable(%)	NR	NR	NR	1
12/13/2007				
Total Volume(m3)	NR	NR	NR	449
Total PCB Mass(ug)	NR	NR	NR	0
PCB Concentration(ug/ m3)	NR	NR	NR	ND(0.0011)
Percent of Allowable(%)	NR	NR	NR	0
12/19/2007				
Total Volume(m3)	NR	NR	NR	447
Total PCB Mass(ug)	NR	NR	NR	7.3
PCB Concentration(ug/ m3)	NR	NR	NR	0.0163
Percent of Allowable(%)	NR	NR	NR	2

Notes:

* - Results not reported due to machine malfunction

ND - Non-detect

NR - No result because machine was not setup

TABLE 2.1 - GROUP 15

SUMMARY OF PUF AIR MONITORING ANALYTICAL RESULTS - JULY TO SEPTEMBER 2007
 GM POWERTRAIN BEDFORD FACILITY
 BEDFORD, INDIANA

Unit_ID	STATION 36 PUF-22	STATION 37 PUF-23	STATION 38 PUF-12	STATION 39 PUF-17
10/1/2007				
Total Volume(m3)	0	442	382(431)	NR
Total PCB Mass(ug)	*	12	14(15)	NR
PCB Concentration(ug/ m3)	*	0.0271	0.0366(0.0348)	NR
Percent of Allowable(%)	*	3	4(3)	NR
10/2/2007				
Total Volume(m3)	270	406	364(413)	368
Total PCB Mass(ug)	1.6	7	1.7(2.1)	3.7
PCB Concentration(ug/ m3)	0.0059	0.0172	0.0047(0.0051)	0.0101
Percent of Allowable(%)	1	2	0(1)	1
10/3/2007				
Total Volume(m3)	340	426	367(417)	356
Total PCB Mass(ug)	4.1	7.6	15(18)	13
PCB Concentration(ug/ m3)	0.0121	0.0178	0.0409(0.0432)	0.0365
Percent of Allowable(%)	1	2	4(4)	4
10/4/2007				
Total Volume(m3)	335	412	397(399)	352
Total PCB Mass(ug)	6.6	17	17(19)	22
PCB Concentration(ug/ m3)	0.0197	0.0413	0.0428(0.0476)	0.0625
Percent of Allowable(%)	2	4	4(5)	6
10/5/2007				
Total Volume(m3)	367	430	370(434)	359
Total PCB Mass(ug)	17	41	39(41)	60
PCB Concentration(ug/ m3)	0.0463	0.0953	0.1054(0.0945)	0.1671
Percent of Allowable(%)	5	10	11(9)	17
10/6/2007				
Total Volume(m3)	373	420	377(443)	355
Total PCB Mass(ug)	11	23	27(30)	31
PCB Concentration(ug/ m3)	0.0295	0.0548	0.0716(0.0677)	0.0873
Percent of Allowable(%)	3	5	7(7)	9
10/8/2007				
Total Volume(m3)	232	384	356(390)	NR
Total PCB Mass(ug)	*	9.3	3(3.3)	NR
PCB Concentration(ug/ m3)	*	0.0242	0.0084(0.0085)	NR
Percent of Allowable(%)	*	2	1(1)	NR

TABLE 2.1 - GROUP 15

SUMMARY OF PUF AIR MONITORING ANALYTICAL RESULTS - JULY TO SEPTEMBER 2007
 GM POWERTRAIN BEDFORD FACILITY
 BEDFORD, INDIANA

Unit_ID	STATION 36 PUF-22	STATION 37 PUF-23	STATION 38 PUF-12	STATION 39 PUF-17
10/9/2007				
Total Volume(m3)	357	449	386(440)	365
Total PCB Mass(ug)	0	3.8	0.9(1.2)	2.9
PCB Concentration(ug/ m3)	ND(0.0014)	0.0085	0.0023(0.0027)	0.0079
Percent of Allowable(%)	0	1	0(0)	1
10/10/2007				
Total Volume(m3)	363	430	412(433)	360
Total PCB Mass(ug)	0	2.2	0(0)	1.3
PCB Concentration(ug/ m3)	ND(0.0014)	0.0051	ND(0.0012)(ND(0.0012))	0.0036
Percent of Allowable(%)	0	1	0(0)	0
10/11/2007				
Total Volume(m3)	339	418	347(405)	344
Total PCB Mass(ug)	0	2.7	0(0.5)	1.5
PCB Concentration(ug/ m3)	ND(0.0015)	0.0065	ND(0.0014)(0.0012)	0.0044
Percent of Allowable(%)	0	1	0(0)	0
10/12/2007				
Total Volume(m3)	347	435	420(441)	384
Total PCB Mass(ug)	0	2.4	2.6(2.7)	3.6
PCB Concentration(ug/ m3)	ND(0.0014)	0.0055	0.0062(0.0061)	0.0094
Percent of Allowable(%)	0	1	1(1)	1
10/15/2007				
Total Volume(m3)	380	448	401(453)	362
Total PCB Mass(ug)	3.8	11	4.5(4.9)	10
PCB Concentration(ug/ m3)	0.01	0.0246	0.0112(0.0108)	0.0276
Percent of Allowable(%)	1	2	1(1)	3
10/16/2007				
Total Volume(m3)	365	421	386(419)	347
Total PCB Mass(ug)	2.3	70	8.9(10)	29
PCB Concentration(ug/ m3)	0.0063	0.1663	0.0231(0.0239)	0.0836
Percent of Allowable(%)	1	17	2(2)	8

TABLE 2.1 - GROUP 15

SUMMARY OF PUF AIR MONITORING ANALYTICAL RESULTS - JULY TO SEPTEMBER 2007
GM POWERTRAIN BEDFORD FACILITY
BEDFORD, INDIANA

Unit_ID	STATION 36 PUF-22	STATION 37 PUF-23	STATION 38 PUF-12	STATION 39 PUF-17
10/17/2007				
Total Volume(m3)	366	419	381(430)	312
Total PCB Mass(ug)	12	27	15(11)	17
PCB Concentration(ug/ m3)	0.0328	0.0644	0.0394(0.0256)	0.0545
Percent of Allowable(%)	3	6	4(3)	5
10/19/2007				
Total Volume(m3)	361	452	400(436)	383
Total PCB Mass(ug)	0	6.9	0(0)	0.9
PCB Concentration(ug/ m3)	ND(0.0014)	0.0153	ND(0.0012)(ND(0.0011))	0.0023
Percent of Allowable(%)	0	2	0(0)	0
10/20/2007				
Total Volume(m3)	316	382	345(376)	321
Total PCB Mass(ug)	0	12	0.5(0)	0.9
PCB Concentration(ug/ m3)	ND(0.0016)	0.0314	0.0014(ND(0.0013))	0.0028
Percent of Allowable(%)	0	3	0(0)	0
10/22/2007				
Total Volume(m3)	372	432	384(420)	244
Total PCB Mass(ug)	4.7	11	8.2(9)	8.6
PCB Concentration(ug/ m3)	0.0126	0.0255	0.0214(0.0214)	0.0352
Percent of Allowable(%)	1	3	2(2)	4
10/25/2007				
Total Volume(m3)	341	125	388(453)	379
Total PCB Mass(ug)	0.8	*	3.7(4.4)	5.3
PCB Concentration(ug/ m3)	0.0023	*	0.0095(0.0097)	0.014
Percent of Allowable(%)	0	*	1(1)	1
10/26/2007				
Total Volume(m3)	320	415	358(418)	344
Total PCB Mass(ug)	0.7	2.7	0.7(0.7)	1.5
PCB Concentration(ug/ m3)	0.0022	0.0065	0.002(0.0017)	0.0044
Percent of Allowable(%)	0	1	0(0)	0
10/29/2007				
Total Volume(m3)	343	349	392(455)	324
Total PCB Mass(ug)	0	5.6	1.5(1.7)	2.9
PCB Concentration(ug/ m3)	ND(0.0015)	0.016	0.0038(0.0037)	0.009
Percent of Allowable(%)	0	2	0(0)	1

TABLE 2.1 - GROUP 15

SUMMARY OF PUF AIR MONITORING ANALYTICAL RESULTS - JULY TO SEPTEMBER 2007
GM POWERTRAIN BEDFORD FACILITY
BEDFORD, INDIANA

Unit_ID	STATION 36 PUF-22	STATION 37 PUF-23	STATION 38 PUF-12	STATION 39 PUF-17
10/30/2007				
Total Volume(m3)	329	468	373(450)	386
Total PCB Mass(ug)	0	11	0.9(1.1)	1.9
PCB Concentration(ug/ m3)	ND(0.0015)	0.0235	0.0024(0.0024)	0.0049
Percent of Allowable(%)	0	2	0(0)	0
10/31/2007				
Total Volume(m3)	316	483	405(470)	407
Total PCB Mass(ug)	0	4.1	0.6(0)	1.4
PCB Concentration(ug/ m3)	ND(0.0016)	0.0085	0.0015(ND(0.0011))	0.0034
Percent of Allowable(%)	0	1	0(0)	0
11/1/2007				
Total Volume(m3)	115	3	413	389
Total PCB Mass(ug)	*	*	1.3	2.6
PCB Concentration(ug/m3)	*	*	0.0031	0.0067
Percent of Allowable(%)	*	*	0	1
11/2/2007				
Total Volume(m3)	NR	0	209	157
Total PCB Mass(ug)	NR	*	*	*
PCB Concentration(ug/m3)	NR	*	*	*
Percent of Allowable(%)	NR	*	*	*
11/5/2007				
Total Volume(m3)	NR	436	254	413
Total PCB Mass(ug)	NR	1.9	*	0.6
PCB Concentration(ug/m3)	NR	0.0044	*	0.0015
Percent of Allowable(%)	NR	0	*	0
11/6/2007				
Total Volume(m3)	NR	478	134	410
Total PCB Mass(ug)	NR	0.5	*	1
PCB Concentration(ug/m3)	NR	0.001	*	0.0024
Percent of Allowable(%)	NR	0	*	0

TABLE 2.1 - GROUP 15

SUMMARY OF PUF AIR MONITORING ANALYTICAL RESULTS - JULY TO SEPTEMBER 2007
GM POWERTRAIN BEDFORD FACILITY
BEDFORD, INDIANA

Unit_ID	STATION 36 PUF-22	STATION 37 PUF-23	STATION 38 PUF-12	STATION 39 PUF-17
11/7/2007				
Total Volume(m3)	NR	1	182	376
Total PCB Mass(ug)	NR	*	*	0.7
PCB Concentration(ug/m3)	NR	*	*	0.0019
Percent of Allowable(%)	NR	*	*	0
11/8/2007				
Total Volume(m3)	341	NR	393	NR
Total PCB Mass(ug)	0	NR	0	NR
PCB Concentration(ug/m3)	ND(0.0015)	NR	ND(0.0013)	NR
Percent of Allowable(%)	0	NR	0	NR
12/6/2007				
Total Volume(m3)	360	158	NR	NR
Total PCB Mass(ug)	1.4	*	NR	NR
PCB Concentration(ug/m3)	0.0039	*	NR	NR
Percent of Allowable(%)	0	*	NR	NR
12/7/2007				
Total Volume(m3)	362	475	418	NR
Total PCB Mass(ug)	0	1.3	0.5	NR
PCB Concentration(ug/m3)	ND(0.0014)	0.0027	0.0012	NR
Percent of Allowable(%)	0	0	0	NR
12/12/2007				
Total Volume(m3)	356	0	NR	327
Total PCB Mass(ug)	0.8	*	NR	0.8
PCB Concentration(ug/m3)	0.0022	*	NR	0.0024
Percent of Allowable(%)	0	*	NR	0
12/13/2007				
Total Volume(m3)	347	445	398	393
Total PCB Mass(ug)	0	0.5	0	0
PCB Concentration(ug/m3)	ND(0.0014)	0.0011	ND(0.0013)	ND(0.0013)
Percent of Allowable(%)	0	0	0	0
12/14/2007				
Total Volume(m3)	356	442	412	399
Total PCB Mass(ug)	0	1.7	1.1	0.6
PCB Concentration(ug/m3)	ND(0.0014)	0.0038	0.0027	0.0015
Percent of Allowable(%)	0	0	0	0

Notes:

* - Results not reported due to machine malfunction

NR - No result because machine was not setup

ND - Non-detect

TABLE 2.2 - GROUP 15

SUMMARY OF TSP AIR MONITORING ANALYTICAL RESULTS - OCTOBER 2007
 GM POWERTRAIN BEDFORD FACILITY
 BEDFORD, INDIANA

Unit_ID	STATION 36 TSP-5	STATION 37 TSP-11	STATION 38 TSP-6(TSP-8)(TSP-9)	STATION 39 TSP-16
10/1/2007				
Total Volume(m3)	1120	1190	1217(1167)(NR)	NR
Average Flow(m3/ min)	0.87	0.78	0.86(0.81)(NR)	NR
TSP Concentration(mg/ m3)	0.0688	0.0975	0.0797(0.0823)(NR)	NR
Percent of Allowable(%)	50	71	UPWIND(UPWIND)(NR)	NR
10/2/2007				
Total Volume(m3)	1115	1386	1221(1230)(NR)	1191
Average Flow(m3/ min)	0.87	0.92	0.87(0.86)(NR)	0.84
TSP Concentration(mg/ m3)	0.0753	0.1133	0.0753(0.0764)(NR)	0.1881
Percent of Allowable(%)	59	89	UPWIND(UPWIND)(NR)	**147
10/3/2007				
Total Volume(m3)	1099	1295	1215(1255)(NR)	1182
Average Flow(m3/ min)	0.87	0.85	0.86(0.87)(NR)	0.83
TSP Concentration(mg/ m3)	0.0792	0.0749	0.0774(0.0757)(NR)	0.11
Percent of Allowable(%)	43	41	42(41)(NR)	UPWIND
10/4/2007				
Total Volume(m3)	1081	1281	1164(3)(NR)	1085
Average Flow(m3/ min)	0.87	0.87	0.86(*) (NR)	0.8
TSP Concentration(mg/ m3)	0.0675	0.0461	0.0782 J(*) (NR)	0.1475
Percent of Allowable(%)	27	19	32(*) (NR)	UPWIND
10/5/2007				
Total Volume(m3)	1139	1105	1226(0)(NR)	1091
Average Flow(m3/ min)	0.87	0.72	0.86(*) (NR)	0.76
TSP Concentration(mg/ m3)	0.0588	0.048	0.0922(*) (NR)	0.2447
Percent of Allowable(%)	14	12	23(*) (NR)	UPWIND
10/6/2007				
Total Volume(m3)	1160	1122	1250(0)(NR)	1185
Average Flow(m3/ min)	0.87	0.72	0.86(*) (NR)	0.8
TSP Concentration(mg/ m3)	0.0457	0.0508	0.0448(*) (NR)	0.092
Percent of Allowable(%)	30	33	29(*) (NR)	UPWIND
10/8/2007				
Total Volume(m3)	705	854	1182(NR)(1200)	1029
Average Flow(m3/ min)	*	0.6	0.86(NR)(0.86)	0.78
TSP Concentration(mg/ m3)	*	0.1604	0.1489(NR)(0.1308)	0.1001
Percent of Allowable(%)	*	58	54(NR)(48)	36

TABLE 2.2 - GROUP 15

SUMMARY OF TSP AIR MONITORING ANALYTICAL RESULTS - OCTOBER 2007
 GM POWERTRAIN BEDFORD FACILITY
 BEDFORD, INDIANA

Unit_ID	STATION 36 TSP-5	STATION 37 TSP-11	STATION 38 TSP-6(TSP-8)(TSP-9)	STATION 39 TSP-16
10/9/2007				
Total Volume(m3)	1119	899	1216(NR)(1279)	1201
Average Flow(m3/ min)	0.88	0.56	0.85(NR)(0.91)	0.79
TSP Concentration(mg/ m3)	0.0715	0.0779	0.074 J(NR)(0.0313 J)	0.1582
Percent of Allowable(%)	UPWIND	65	62(NR)(26)	132 ⁽¹⁾
10/10/2007				
Total Volume(m3)	1168	1028	1293(NR)(1114)	1211
Average Flow(m3/ min)	0.9	0.67	0.91(NR)(0.95)	0.84
TSP Concentration(mg/ m3)	0.0497	0.0477	0.0147 J(NR)(0.026 J)	0.1115
Percent of Allowable(%)	UPWIND	57	18(NR)(31)	134 ⁽²⁾
10/11/2007				
Total Volume(m3)	1078	851	1121(NR)(1242)	1130
Average Flow(m3/ min)	0.89	0.59	0.87(NR)(0.95)	0.85
TSP Concentration(mg/ m3)	0.0464	0.047	0.0294(NR)(0.0274)	0.054
Percent of Allowable(%)	UPWIND	61	38(NR)(35)	70
10/12/2007				
Total Volume(m3)	1119	811	1218(NR)(1351)	1123
Average Flow(m3/ min)	0.89	0.56	0.87(NR)(0.95)	0.82
TSP Concentration(mg/ m3)	0.0527	0.0592	0.0468(NR)(0.0452)	0.0695
Percent of Allowable(%)	UPWIND	67	53(NR)(51)	79
10/15/2007				
Total Volume(m3)	1191	921	1250(NR)(1273)	1204
Average Flow(m3/ min)	0.91	0.62	0.87(NR)(0.87)	0.83
TSP Concentration(mg/ m3)	0.0319	0.1042	0.124(NR)(0.1288)	0.4551
Percent of Allowable(%)	15	48	UPWIND(NR)(UPWIND)	212 ⁽¹⁾
10/16/2007				
Total Volume(m3)	1144	932	1200(NR)(1302)	1223
Average Flow(m3/ min)	0.91	0.62	0.87(NR)(0.93)	0.88
TSP Concentration(mg/ m3)	0.0524	0.0354	0.0742(NR)(0.073)	0.0409
Percent of Allowable(%)	43	29	UPWIND(NR)(UPWIND)	34
10/17/2007				
Total Volume(m3)	1136	824	1216(NR)(1321)	987
Average Flow(m3/ min)	0.87	0.55	0.86(NR)(0.92)	0.79
TSP Concentration(mg/ m3)	0.0607	0.051	0.111(NR)(0.106)	0.1641
Percent of Allowable(%)	22	19	41(NR)(39)	UPWIND

TABLE 2.2 - GROUP 15

SUMMARY OF TSP AIR MONITORING ANALYTICAL RESULTS - OCTOBER 2007
 GM POWERTRAIN BEDFORD FACILITY
 BEDFORD, INDIANA

Unit_ID	STATION 36 TSP-5	STATION 37 TSP-11	STATION 38 TSP-6(TSP-8)(TSP-9)	STATION 39 TSP-16
10/19/2007				
Total Volume(m3)	1177	905	1127(NR)(1357)	1192
Average Flow(m3/min)	0.91	0.58	0.86(NR)(0.93)	0.81
TSP Concentration(mg/m3)	0.0229	0.0309	0.0444 J(NR)(0.0228 J)	0.0378
Percent of Allowable(%)	60	81	UPWIND(NR)(UPWIND)	99
10/20/2007				
Total Volume(m3)	914	765	1050(NR)(1102)	1000
Average Flow(m3/min)	0.81	0.58	0.85(NR)(0.88)	0.81
TSP Concentration(mg/m3)	0.0295	0.0484	0.0505(NR)(0.0408)	0.035
Percent of Allowable(%)	43	71	UPWIND(NR)(UPWIND)	51
10/22/2007				
Total Volume(m3)	1116	663	1155(NR)(1279)	890
Average Flow(m3/min)	0.87	0.46	0.84(NR)(0.9)	0.84
TSP Concentration(mg/m3)	0.0314	0.0151	0.0554(NR)(0.05)	0.0708
Percent of Allowable(%)	27	13	47(NR)(42)	UPWIND
10/25/2007				
Total Volume(m3)	1258	372	1309(NR)(1419)	1313
Average Flow(m3/min)	0.96	*	0.91(NR)(0.97)	0.9
TSP Concentration(mg/m3)	0.0024	*	0.0199(NR)(0.0254)	0.019
Percent of Allowable(%)	6	*	UPWIND(NR)(UPWIND)	45
10/26/2007				
Total Volume(m3)	1024	1	1156(NR)(1310)	1113
Average Flow(m3/min)	0.84	*	0.87(NR)(0.97)	0.84
TSP Concentration(mg/m3)	0.0215	*	0.0355(NR)(0.0336)	0.0288
Percent of Allowable(%)	UPWIND	*	99(NR)(94)	80
10/29/2007				
Total Volume(m3)	1092	1243	1231(NR)(1324)	901
Average Flow(m3/min)	0.86	0.89	0.88(NR)(0.93)	0.75
TSP Concentration(mg/m3)	0.0815	0.0185	0.091(NR)(0.0899)	0.0877
Percent of Allowable(%)	UPWIND	14	67(NR)(66)	64
10/30/2007				
Total Volume(m3)	1113	0	1189(NR)(1350)	1020
Average Flow(m3/min)	0.88	*	0.86(NR)(0.96)	0.74
TSP Concentration(mg/m3)	0.0907	*	0.1337(NR)(0.1193)	0.1657
Percent of Allowable(%)	UPWIND	*	88(NR)(79)	109 ⁽²⁾

TABLE 2.2 - GROUP 15

SUMMARY OF TSP AIR MONITORING ANALYTICAL RESULTS - OCTOBER 2007
 GM POWERTRAIN BEDFORD FACILITY
 BEDFORD, INDIANA

Unit_ID	STATION 36 TSP-5	STATION 37 TSP-11	STATION 38 TSP-6(TSP-8)(TSP-9)	STATION 39 TSP-16
10/31/2007				
Total Volume(m3)	1058	1293	1244(NR)(1412)	1061
Average Flow(m3/min)	0.87	0.83	0.86(NR)(0.96)	0.73
TSP Concentration(mg/m3)	0.0898	0.0015	0.086(NR)(0.0793)	0.0914
Percent of Allowable(%)	UPWIND	1	57(NR)(53)	61

Notes:

* - Results not reported due to machine malfunction.

NR - No result because machine was not setup or generator malfunction.

⁽¹⁾ - Exceedence due to increased truck traffic and dry conditions. Area is being wetted frequently to minimize dust.

⁽²⁾ - Exceedence due to TSP unit downwind of generator and increased particulate from exhaust.

TABLE 2.2 - GROUP 15

SUMMARY OF TSP AIR MONITORING ANALYTICAL RESULTS - NOVEMBER 2007
 GM POWERTRAIN BEDFORD FACILITY
 BEDFORD, INDIANA

Unit_ID	STATION 36 TSP-5	STATION 37 TSP-11	STATION 38 TSP-6(TSP-9)	STATION 39 TSP-16
11/1/2007				
Total Volume(m3)	385	8	1184(1371)	1084
Average Flow(m3/min)	*	*	0.86(0.98)	0.78
TSP Concentration(mg/m3)	*	*	0.0625(0.054)	0.0526
Percent of Allowable(%)	*	*	UPWIND(UPWIND)	58
11/2/2007				
Total Volume(m3)	NR	0	636(1554)	1411
Average Flow(m3/min)	NR	*	*(0.98)	0.81
TSP Concentration(mg/m3)	NR	*	*(0.1042)	0.0361
Percent of Allowable(%)	NR	*	*(116) ⁽²⁾	40
11/5/2007				
Total Volume(m3)	NR	1	560(1218)	1054
Average Flow(m3/min)	NR	*	*(0.88)	0.74
TSP Concentration(mg/m3)	NR	*	*(0.0829)	0.1395
Percent of Allowable(%)	NR	*	*(36)	UPWIND
11/6/2007				
Total Volume(m3)	NR	NR	600(1369)	1087
Average Flow(m3/min)	NR	NR	*(0.96)	0.77
TSP Concentration(mg/m3)	NR	NR	*(0.0592)	0.0616
Percent of Allowable(%)	NR	NR	*(58)	UPWIND
11/7/2007				
Total Volume(m3)	1077	0	575(1419)	1037
Average Flow(m3/min)	0.86	*	*(1.02)	0.77
TSP Concentration(mg/m3)	0.1058	*	*(0.1057)	0.1601
Percent of Allowable(%)	UPWIND	*	*(60)	91
11/8/2007				
Total Volume(m3)	1142	NR	1236(1457)	NR
Average Flow(m3/min)	0.84	NR	0.88(0.97)	NR
TSP Concentration(mg/m3)	0.1042	NR	0.1036(0.105)	NR
Percent of Allowable(%)	UPWIND	NR	60(60)	NR

Notes:

* - Results not reported due to machine malfunction.

NR - No result because machine was not setup or generator malfunction.

⁽¹⁾ - Exceedneces due to increased truck traffic and dry conditions. Area is being wetted frequently to minimize dust.

⁽²⁾- Exceedence due to TSP unit downwind of generator and increased particulate from exhaust.

TABLE 2.2 - GROUP 15

SUMMARY OF TSP AIR MONITORING ANALYTICAL RESULTS - DECEMBER 2007
 GM POWERTRAIN BEDFORD FACILITY
 BEDFORD, INDIANA

Unit_ID	STATION 36 TSP-5	STATION 37 TSP-11	STATION 38 TSP-6(TSP-9)	STATION 39 TSP-16
12/6/2007				
Total Volume(m3)	1086	NR	NR(1340)	NR
Average Flow(m3/min)	0.83	NR	NR(0.95)	NR
TSP Concentration(mg/m3)	0.0497	NR	NR(0.1306)	NR
Percent of Allowable(%)	UPWIND	NR	NR(157)	NR
12/7/2007				
Total Volume(m3)	1194	1272	1255(1448)	NR
Average Flow(m3/min)	0.89	0.83	0.87(0.99)	NR
TSP Concentration(mg/m3)	0.0293	0.0393	0.0311(0.0269)	NR
Percent of Allowable(%)	65	87	UPWIND(UPWIND)	NR
12/12/2007				
Total Volume(m3)	1070	0	1189(1301)	953
Average Flow(m3/min)	0.84	*	0.86(0.93)	0.81
TSP Concentration(mg/m3)	0.0121	*	0.0193(0.0184)	0.0105
Percent of Allowable(%)	39	*	UPWIND(UPWIND)	34
12/13/2007				
Total Volume(m3)	1144	1232	1263(1367)	1124
Average Flow(m3/min)	0.89	0.83	0.9(0.96)	0.8
TSP Concentration(mg/m3)	0.0236	0.0308	0.0269(0.0241)	0.0142
Percent of Allowable(%)	100 ⁽¹⁾	130 ⁽¹⁾	113(102) ⁽¹⁾	UPWIND
12/14/2007				
Total Volume(m3)	1157	1285	1322(1427)	1102
Average Flow(m3/min)	0.91	0.87	0.93(0.99)	0.8
TSP Concentration(mg/m3)	0.0346	0.0335	0.0227(0.0308)	0.0172
Percent of Allowable(%)	UPWIND	58	39(53)	30

Notes:

* - Results not reported due to machine malfunction.

NR - No result because machine was not setup or generator malfunction.

⁽¹⁾ - Exceedence due to increased truck traffic and dry conditions. Area is being wetted frequently to minimize dust.

⁽²⁾ - Exceedence due to TSP unit downwind of generator and increased particulate from exhaust.

TABLE 7.1

**NORTHERN TRIBUTARY VALIDATED VERIFICATION SAMPLE ANALYTICAL RESULTS SUMMARY
GM POWERTRAIN BEDFORD FACILITY
BEDFORD, INDIANA**

<i>Sample Area:</i>	<i>P382</i>	<i>P382</i>	<i>P384</i>	<i>P384</i>	<i>P384</i>	<i>P384</i>
<i>Sample Location:</i>	382-26202	382-26203	384-26136	384-26137	384-26138	384-26139
<i>Sample Date:</i>	12/19/2007	12/19/2007	11/7/2007	11/7/2007	11/7/2007	11/7/2007
<i>Sample ID:</i>	S-382-121907-AH-26202	S-382-121907-AH-26203	S-384-110707-AH-26136	S-384-110707-AH-26137	S-384-110707-AH-26138	S-384-110707-AH-26139
<i>Depth (ft):</i>	(0-0.33)	(0-0.33)	(0-0.33)	(0-0.33)	(0-0.33)	(0-0.33)

<i>Parameters</i>	<i>Units</i>						
<i>PCBs</i>							
Aroclor-1016 (PCB-1016)	mg/kg	0.053 U	0.046 U	0.039 U	0.042 U	0.037 U	0.037 U
Aroclor-1221 (PCB-1221)	mg/kg	0.053 U	0.046 U	0.039 U	0.042 U	0.037 U	0.037 U
Aroclor-1232 (PCB-1232)	mg/kg	0.053 U	0.046 U	0.039 U	0.042 U	0.037 U	0.037 U
Aroclor-1242 (PCB-1242)	mg/kg	0.053 U	0.046 U	0.039 U	0.042 U	0.037 U	0.037 U
Aroclor-1248 (PCB-1248)	mg/kg	0.75	0.046 U	0.039 U	0.042 U	0.012 J	0.074
Aroclor-1254 (PCB-1254)	mg/kg	0.053 U	0.046 U	0.039 U	0.042 U	0.037 U	0.037 U
Aroclor-1260 (PCB-1260)	mg/kg	0.19	0.61 J	0.039 U	0.042 U	0.037 U	0.014 J
Total PCBs	mg/kg	0.94	0.61 J	0	0	0.012 J	0.088 J

Notes:

U - Not present at or above the associated value.

J - Estimated concentration.

UJ - Estimated reporting limit.

TABLE 7.1

NORTHERN TRIBUTARY VALIDATED VERIFICATION SAMPLE ANALYTICAL RESULTS SUMMARY
 GM POWERTRAIN BEDFORD FACILITY
 BEDFORD, INDIANA

Sample Area:	P384	P384	P384	P384	P384	P384	
Sample Location:	384-26140	384-26140	384-26142	384-26143	384-26144	384-26172	
Sample Date:	11/7/2007	11/7/2007	11/7/2007	11/7/2007	11/7/2007	11/12/2007	
Sample ID:	S-384-110707-AH-26140	S-384-110707-AH-26141	S-384-110707-AH-26142	S-384-110707-AH-26143	S-384-110707-AH-26144	S-384-111207-AH-26172	
Depth (ft):	(0-0.33)	(0-0.33)	(0-0.33)	(0-0.33)	(0-0.33)	(0-0.33)	
		(Duplicate)					
Parameters	Units						
PCBs							
Aroclor-1016 (PCB-1016)	mg/kg	0.041 U	0.039 U	0.043 U	0.043 U	0.042 U	0.039 U
Aroclor-1221 (PCB-1221)	mg/kg	0.041 U	0.039 U	0.043 U	0.043 U	0.042 U	0.039 U
Aroclor-1232 (PCB-1232)	mg/kg	0.041 U	0.039 U	0.043 U	0.043 U	0.042 U	0.039 U
Aroclor-1242 (PCB-1242)	mg/kg	0.041 U	0.039 U	0.043 U	0.043 U	0.042 U	0.039 U
Aroclor-1248 (PCB-1248)	mg/kg	0.041 U	0.039 U	0.043 U	0.043 U	0.019 J	0.9
Aroclor-1254 (PCB-1254)	mg/kg	0.041 U	0.039 U	0.043 U	0.043 U	0.042 U	0.039 U
Aroclor-1260 (PCB-1260)	mg/kg	0.041 U	0.039 U	0.043 U	0.043 U	0.042 U	0.14
Total PCBs	mg/kg	0	0	0	0	0.019 J	1.04

Notes:
 U - Not present at or above the associated value.
 J - Estimated concentration.
 UJ - Estimated reporting limit.

TABLE 7.1

**NORTHERN TRIBUTARY VALIDATED VERIFICATION SAMPLE ANALYTICAL RESULTS SUMMARY
GM POWERTRAIN BEDFORD FACILITY
BEDFORD, INDIANA**

<i>Sample Area:</i>	<i>P384</i>	<i>P384</i>	<i>P384</i>	<i>P384</i>	<i>P384</i>	<i>P384</i>
<i>Sample Location:</i>	384-26173	384-26174	384-26175	384-26176	384-26177	384-26179
<i>Sample Date:</i>	11/12/2007	11/12/2007	11/12/2007	11/12/2007	11/12/2007	11/12/2007
<i>Sample ID:</i>	S-384-111207-AH-26173	S-384-111207-AH-26174	S-384-111207-AH-26175	S-384-111207-AH-26176	S-384-111207-AH-26177	S-384-111207-AH-26179
<i>Depth (ft):</i>	(0-0.33)	(0-0.33)	(0-0.33)	(0-0.33)	(0-0.33)	(0-0.33)

<i>Parameters</i>	<i>Units</i>						
<i>PCBs</i>							
Aroclor-1016 (PCB-1016)	mg/kg	0.041 U	0.042 U	0.042 U	0.037 U	0.039 U	0.036 U
Aroclor-1221 (PCB-1221)	mg/kg	0.041 U	0.042 U	0.042 U	0.037 U	0.039 U	0.036 U
Aroclor-1232 (PCB-1232)	mg/kg	0.041 U	0.042 U	0.042 U	0.037 U	0.039 U	0.036 U
Aroclor-1242 (PCB-1242)	mg/kg	0.041 U	0.042 U	0.042 U	0.037 U	0.039 U	0.036 U
Aroclor-1248 (PCB-1248)	mg/kg	0.36	0.042 U	0.042 U	0.058	0.047	0.22
Aroclor-1254 (PCB-1254)	mg/kg	0.041 U	0.042 U	0.042 U	0.037 U	0.039 U	0.036 U
Aroclor-1260 (PCB-1260)	mg/kg	0.065	0.042 U	0.042 U	0.014 J	0.039 U	0.14
Total PCBs	mg/kg	0.425	0	0	0.072 J	0.047	0.36

Notes:

U - Not present at or above the associated value.

J - Estimated concentration.

UJ - Estimated reporting limit.

TABLE 7.1

**NORTHERN TRIBUTARY VALIDATED VERIFICATION SAMPLE ANALYTICAL RESULTS SUMMARY
GM POWERTRAIN BEDFORD FACILITY
BEDFORD, INDIANA**

<i>Sample Area:</i>	<i>P384</i>	<i>P384</i>	<i>P384</i>	<i>P384</i>	<i>P384</i>	<i>P384</i>
<i>Sample Location:</i>	384-26180	384-26180	384-26182	384-26183	384-26184	384-26187
<i>Sample Date:</i>	11/12/2007	11/12/2007	11/12/2007	11/12/2007	11/12/2007	11/12/2007
<i>Sample ID:</i>	S-384-111207-AH-26180	S-384-111207-AH-26181	S-384-111207-AH-26182	S-384-111207-AH-26183	S-384-111207-AH-26184	S-384-111207-AH-26187
<i>Depth (ft):</i>	(0-0.33)	(0-0.33) (Duplicate)	(0-0.33)	(0-0.33)	(0-0.33)	(0-0.33)

<i>Parameters</i>	<i>Units</i>						
<i>PCBs</i>							
Aroclor-1016 (PCB-1016)	mg/kg	0.04 U	0.041 U	0.04 U	0.043 U	0.044 U	0.19 U
Aroclor-1221 (PCB-1221)	mg/kg	0.04 U	0.041 U	0.04 U	0.043 U	0.044 U	0.19 U
Aroclor-1232 (PCB-1232)	mg/kg	0.04 U	0.041 U	0.04 U	0.043 U	0.044 U	0.19 U
Aroclor-1242 (PCB-1242)	mg/kg	0.04 U	0.041 U	0.04 U	0.043 U	0.044 U	0.19 U
Aroclor-1248 (PCB-1248)	mg/kg	0.16	0.36	0.053	0.22	0.13	2.2
Aroclor-1254 (PCB-1254)	mg/kg	0.04 U	0.041 U	0.04 U	0.043 U	0.044 U	0.19 U
Aroclor-1260 (PCB-1260)	mg/kg	0.067	0.11	0.04 U	0.065	0.077	0.29
Total PCBs	mg/kg	0.227	0.47	0.053	0.285	0.207	2.49

Notes:

U - Not present at or above the associated value.

J - Estimated concentration.

UJ - Estimated reporting limit.

TABLE 7.1

**NORTHERN TRIBUTARY VALIDATED VERIFICATION SAMPLE ANALYTICAL RESULTS SUMMARY
GM POWERTRAIN BEDFORD FACILITY
BEDFORD, INDIANA**

<i>Sample Area:</i>	<i>P384</i>	<i>P384</i>	<i>P384</i>	<i>P384</i>	<i>P386</i>	<i>P386</i>	
<i>Sample Location:</i>	384-26200	384-26200	384-31402	384-31403	386-26014	386-26015	
<i>Sample Date:</i>	12/19/2007	12/19/2007	11/15/2007	11/15/2007	9/11/2007	9/11/2007	
<i>Sample ID:</i>	S-384-121907-AH-26200	S-384-121907-AH-26201	S-384-111507-AH-31402	S-384-111507-AH-31403	S-386-091107-AH-26014	S-386-091107-AH-26015	
<i>Depth (ft):</i>	(0-0.33)	(0-0.33)	(0-0.33)	(0-0.33)	(0-0.33)	(0-0.33)	
		(Duplicate)					
<i>Parameters</i>	<i>Units</i>						
<i>PCBs</i>							
Aroclor-1016 (PCB-1016)	mg/kg	0.093 U	0.044 U	0.044 U	0.043 U	0.042 U	0.04 U
Aroclor-1221 (PCB-1221)	mg/kg	0.093 U	0.044 U	0.044 U	0.043 U	0.042 U	0.04 U
Aroclor-1232 (PCB-1232)	mg/kg	0.093 U	0.044 U	0.044 U	0.043 U	0.042 U	0.04 U
Aroclor-1242 (PCB-1242)	mg/kg	0.093 U	0.044 U	0.044 U	0.043 U	0.042 U	0.04 U
Aroclor-1248 (PCB-1248)	mg/kg	1	0.44	0.15	0.085	0.13	1.1
Aroclor-1254 (PCB-1254)	mg/kg	0.093 U	0.044 U	0.044 U	0.043 U	0.042 U	0.04 U
Aroclor-1260 (PCB-1260)	mg/kg	0.14	0.078	0.26	0.024 J	0.024 J	0.16
Total PCBs	mg/kg	1.14	0.518	0.41	0.109 J	0.154 J	1.26

Notes:

U - Not present at or above the associated value.

J - Estimated concentration.

UJ - Estimated reporting limit.

TABLE 7.1

NORTHERN TRIBUTARY VALIDATED VERIFICATION SAMPLE ANALYTICAL RESULTS SUMMARY
 GM POWERTRAIN BEDFORD FACILITY
 BEDFORD, INDIANA

<i>Sample Area:</i>	P386	P386	P386	P386	P386	P386
<i>Sample Location:</i>	386-26016	386-26017	386-26018	386-26019	386-26020	386-26020
<i>Sample Date:</i>	9/11/2007	9/11/2007	9/11/2007	9/11/2007	9/11/2007	9/11/2007
<i>Sample ID:</i>	S-386-091107-AH-26016	S-386-091107-AH-26017	S-386-091107-AH-26018	S-386-091107-AH-26019	S-386-091107-AH-26020	S-386-091107-AH-26021
<i>Depth (ft):</i>	(0-0.33)	(0-0.33)	(0-0.33)	(0-0.33)	(0-0.33)	(0-0.33) (Duplicate)

<i>Parameters</i>	<i>Units</i>						
<i>PCBs</i>							
Aroclor-1016 (PCB-1016)	mg/kg	0.039 U	0.042 U	0.041 U	0.04 U	0.039 U	0.04 U
Aroclor-1221 (PCB-1221)	mg/kg	0.039 U	0.042 U	0.041 U	0.04 U	0.039 U	0.04 U
Aroclor-1232 (PCB-1232)	mg/kg	0.039 U	0.042 U	0.041 U	0.04 U	0.039 U	0.04 U
Aroclor-1242 (PCB-1242)	mg/kg	0.039 U	0.042 U	0.041 U	0.04 U	0.039 U	0.04 U
Aroclor-1248 (PCB-1248)	mg/kg	0.13	0.092	0.028 J	0.091	0.4	0.47
Aroclor-1254 (PCB-1254)	mg/kg	0.039 U	0.042 U	0.041 U	0.04 U	0.039 U	0.04 U
Aroclor-1260 (PCB-1260)	mg/kg	0.047	0.034 J	0.041 U	0.025 J	0.13	0.15
Total PCBs	mg/kg	0.177	0.126 J	0.028 J	0.116 J	0.53	0.62

Notes:
 U - Not present at or above the associated value.
 J - Estimated concentration.
 UJ - Estimated reporting limit.

TABLE 7.1

**NORTHERN TRIBUTARY VALIDATED VERIFICATION SAMPLE ANALYTICAL RESULTS SUMMARY
GM POWERTRAIN BEDFORD FACILITY
BEDFORD, INDIANA**

<i>Sample Area:</i>	<i>P386</i>	<i>P386</i>	<i>P386</i>	<i>P386</i>	<i>P386</i>	<i>P386</i>
<i>Sample Location:</i>	386-26022	386-26023	386-26024	386-26025	386-26026	386-26027
<i>Sample Date:</i>	9/11/2007	9/19/2007	9/19/2007	9/19/2007	9/19/2007	9/29/2007
<i>Sample ID:</i>	S-386-091107-AH-26022	S-386-091907-AH-26023	S-386-091907-AH-26024	S-386-091907-AH-26025	S-386-091907-AH-26026	S-386-092907-AH-26027
<i>Depth (ft):</i>	(0-0.33)	(0-0.33)	(0-0.33)	(0-0.33)	(0-0.33)	(0-0.33)

<i>Parameters</i>	<i>Units</i>						
<i>PCBs</i>							
Aroclor-1016 (PCB-1016)	mg/kg	0.041 U	0.037 U	0.039 U	0.04 U	0.042 U	0.041 U
Aroclor-1221 (PCB-1221)	mg/kg	0.041 U	0.037 U	0.039 U	0.04 U	0.042 U	0.041 U
Aroclor-1232 (PCB-1232)	mg/kg	0.041 U	0.037 U	0.039 U	0.04 U	0.042 U	0.041 U
Aroclor-1242 (PCB-1242)	mg/kg	0.041 U	0.037 U	0.039 U	0.04 U	0.042 U	0.041 U
Aroclor-1248 (PCB-1248)	mg/kg	0.79	0.46	0.27	1.1	0.71	0.46
Aroclor-1254 (PCB-1254)	mg/kg	0.041 U	0.037 U	0.039 U	0.04 U	0.042 U	0.041 U
Aroclor-1260 (PCB-1260)	mg/kg	0.22	0.073	0.085	0.3	0.19	0.18
Total PCBs	mg/kg	1.01	0.533	0.355	1.4	0.9	0.64

Notes:

U - Not present at or above the associated value.

J - Estimated concentration.

UJ - Estimated reporting limit.

TABLE 7.1

**NORTHERN TRIBUTARY VALIDATED VERIFICATION SAMPLE ANALYTICAL RESULTS SUMMARY
GM POWERTRAIN BEDFORD FACILITY
BEDFORD, INDIANA**

<i>Sample Area:</i>	<i>P386</i>	<i>P386</i>	<i>P386</i>	<i>P386</i>	<i>P386</i>	<i>P386</i>	
<i>Sample Location:</i>	386-26028	386-26029	386-26030	386-26030	386-26032	386-26033	
<i>Sample Date:</i>	9/29/2007	9/29/2007	9/29/2007	9/29/2007	9/29/2007	9/29/2007	
<i>Sample ID:</i>	S-386-092907-AH-26028	S-386-092907-AH-26029	S-386-092907-AH-26030	S-386-092907-AH-26031	S-386-092907-AH-26032	S-386-092907-AH-26033	
<i>Depth (ft):</i>	(0-0.33)	(0-0.33)	(0-0.33)	(0-0.33)	(0-0.33)	(0-0.33)	
				(Duplicate)			
<i>Parameters</i>	<i>Units</i>						
<i>PCBs</i>							
Aroclor-1016 (PCB-1016)	mg/kg	0.04 U	0.043 U	0.039 U	0.038 U	0.035 U	0.41 U
Aroclor-1221 (PCB-1221)	mg/kg	0.04 U	0.043 U	0.039 U	0.038 U	0.035 U	0.41 U
Aroclor-1232 (PCB-1232)	mg/kg	0.04 U	0.043 U	0.039 U	0.038 U	0.035 U	0.41 U
Aroclor-1242 (PCB-1242)	mg/kg	0.04 U	0.043 U	0.039 U	0.038 U	0.035 U	0.41 U
Aroclor-1248 (PCB-1248)	mg/kg	0.6	0.013 J	0.039 U	0.038 U	0.035 U	7.8
Aroclor-1254 (PCB-1254)	mg/kg	0.04 U	0.043 U	0.039 U	0.038 U	0.035 U	0.41 U
Aroclor-1260 (PCB-1260)	mg/kg	0.19	0.043 U	0.039 U	0.038 U	0.035 U	0.72
Total PCBs	mg/kg	0.79	0.013 J	0	0	0	8.52

Notes:

U - Not present at or above the associated value.

J - Estimated concentration.

UJ - Estimated reporting limit.

TABLE 7.1

**NORTHERN TRIBUTARY VALIDATED VERIFICATION SAMPLE ANALYTICAL RESULTS SUMMARY
GM POWERTRAIN BEDFORD FACILITY
BEDFORD, INDIANA**

<i>Sample Area:</i>	<i>P386</i>	<i>P386</i>	<i>P386</i>	<i>P386</i>	<i>P386</i>	<i>P386</i>
<i>Sample Location:</i>	386-26034	386-26035	386-26036	386-26037	386-26038	386-26039
<i>Sample Date:</i>	9/29/2007	9/29/2007	9/29/2007	10/2/2007	10/2/2007	10/2/2007
<i>Sample ID:</i>	S-386-092907-AH-26034	S-386-092907-AH-26035	S-386-092907-AH-26036	S-386-100207-AH-26037	S-386-100207-AH-26038	S-386-100207-AH-26039
<i>Depth (ft):</i>	(0-0.33)	(0-0.33)	(0-0.33)	(0-0.33)	(0-0.33)	(0-0.33)

<i>Parameters</i>	<i>Units</i>						
<i>PCBs</i>							
Aroclor-1016 (PCB-1016)	mg/kg	0.04 U	0.78 U	0.76 U	0.04 U	0.043 U	0.043 U
Aroclor-1221 (PCB-1221)	mg/kg	0.04 U	0.78 U	0.76 U	0.04 U	0.043 U	0.043 U
Aroclor-1232 (PCB-1232)	mg/kg	0.04 U	0.78 U	0.76 U	0.04 U	0.043 U	0.043 U
Aroclor-1242 (PCB-1242)	mg/kg	0.04 U	0.78 U	0.76 U	0.04 U	0.043 U	0.043 U
Aroclor-1248 (PCB-1248)	mg/kg	0.65	16	13	0.46	0.34	0.24
Aroclor-1254 (PCB-1254)	mg/kg	0.04 U	0.78 U	0.76 U	0.04 U	0.043 U	0.043 U
Aroclor-1260 (PCB-1260)	mg/kg	0.21	4.7	4.4	0.13	0.094	0.054
Total PCBs	mg/kg	0.86	20.7	17.4	0.59	0.434	0.294

Notes:

U - Not present at or above the associated value.

J - Estimated concentration.

UJ - Estimated reporting limit.

TABLE 7.1

**NORTHERN TRIBUTARY VALIDATED VERIFICATION SAMPLE ANALYTICAL RESULTS SUMMARY
GM POWERTRAIN BEDFORD FACILITY
BEDFORD, INDIANA**

<i>Sample Area:</i>	<i>P386</i>	<i>P386</i>	<i>P386</i>	<i>P386</i>	<i>P386</i>	<i>P386</i>	
<i>Sample Location:</i>	386-26040	386-26040	386-26042	386-26043	386-26044	386-26045	
<i>Sample Date:</i>	10/2/2007	10/2/2007	10/8/2007	10/8/2007	10/8/2007	10/11/2007	
<i>Sample ID:</i>	S-386-100207-AH-26040	S-386-100207-AH-26041	S-386-100807-AH-26042	S-386-100807-AH-26043	S-386-100807-AH-26044	S-386-101107-CH-26045	
<i>Depth (ft):</i>	(0-0.33)	(0-0.33) (Duplicate)	(0-0.33)	(0-0.33)	(0-0.33)	(0-0.33)	
<i>Parameters</i>	<i>Units</i>						
PCBs							
Aroclor-1016 (PCB-1016)	mg/kg	0.042 U	0.042 U	0.038 U	0.76 U	1.9 U	0.039 U
Aroclor-1221 (PCB-1221)	mg/kg	0.042 U	0.042 U	0.038 U	0.76 U	1.9 U	0.039 U
Aroclor-1232 (PCB-1232)	mg/kg	0.042 U	0.042 U	0.038 U	0.76 U	1.9 U	0.039 U
Aroclor-1242 (PCB-1242)	mg/kg	0.042 U	0.042 U	0.038 U	0.76 U	1.9 U	0.039 U
Aroclor-1248 (PCB-1248)	mg/kg	0.26	0.26	0.56	10	25	0.26
Aroclor-1254 (PCB-1254)	mg/kg	0.042 U	0.042 U	0.038 U	0.76 U	1.9 U	0.039 U
Aroclor-1260 (PCB-1260)	mg/kg	0.061	0.052	0.092	2	6.7	0.043
Total PCBs	mg/kg	0.321	0.312	0.652	12	31.7	0.303

Notes:

U - Not present at or above the associated value.

J - Estimated concentration.

UJ - Estimated reporting limit.

TABLE 7.1

**NORTHERN TRIBUTARY VALIDATED VERIFICATION SAMPLE ANALYTICAL RESULTS SUMMARY
GM POWERTRAIN BEDFORD FACILITY
BEDFORD, INDIANA**

<i>Sample Area:</i>		<i>P386</i>	<i>P386</i>	<i>P386</i>	<i>P386</i>	<i>P386</i>	<i>P386</i>
<i>Sample Location:</i>		386-26046	386-26047	386-26048	386-26049	386-26050	386-26050
<i>Sample Date:</i>		10/11/2007	10/11/2007	10/11/2007	10/12/2007	10/12/2007	10/12/2007
<i>Sample ID:</i>		S-386-101107-CH-26046	S-386-101107-CH-26047	S-386-101107-CH-26048	S-386-101207-AH-26049	S-386-101207-AH-26050	S-386-101207-AH-26051
<i>Depth (ft):</i>		(0-0.33)	(0-0.33)	(0-0.33)	(0-0.33)	(0-0.33)	(0-0.33) (Duplicate)
<i>Parameters</i>	<i>Units</i>						
<i>PCBs</i>							
Aroclor-1016 (PCB-1016)	mg/kg	0.77 U	0.4 U	0.04 U	0.045 U	0.043 U	0.043 U
Aroclor-1221 (PCB-1221)	mg/kg	0.77 U	0.4 U	0.04 U	0.045 U	0.043 U	0.043 U
Aroclor-1232 (PCB-1232)	mg/kg	0.77 U	0.4 U	0.04 U	0.045 U	0.043 U	0.043 U
Aroclor-1242 (PCB-1242)	mg/kg	0.77 U	0.4 U	0.04 U	0.045 U	0.043 U	0.043 U
Aroclor-1248 (PCB-1248)	mg/kg	16	8.9	0.8	0.19	1.1	0.58
Aroclor-1254 (PCB-1254)	mg/kg	0.77 U	0.4 U	0.04 U	0.045 U	0.043 U	0.043 U
Aroclor-1260 (PCB-1260)	mg/kg	4.5	2.3	0.26	0.05	0.15	0.093
Total PCBs	mg/kg	20.5	11.2	1.06	0.24	1.25	0.673

Notes:

U - Not present at or above the associated value.

J - Estimated concentration.

UJ - Estimated reporting limit.

TABLE 7.1

**NORTHERN TRIBUTARY VALIDATED VERIFICATION SAMPLE ANALYTICAL RESULTS SUMMARY
GM POWERTRAIN BEDFORD FACILITY
BEDFORD, INDIANA**

<i>Sample Area:</i>	P386	P386	P386	P386	P386	P386
<i>Sample Location:</i>	386-26052	386-26053	386-26054	386-26055	386-26056	386-26057
<i>Sample Date:</i>	10/12/2007	10/12/2007	10/12/2007	10/12/2007	10/12/2007	10/12/2007
<i>Sample ID:</i>	S-386-101207-AH-26052	S-386-101207-AH-26053	S-386-101207-AH-26054	S-386-101207-AH-26055	S-386-101207-AH-26056	S-386-101207-AH-26057
<i>Depth (ft):</i>	(0-0.33)	(0-0.33)	(0-0.33)	(0-0.33)	(0-0.33)	(0-0.33)

<i>Parameters</i>	<i>Units</i>						
<i>PCBs</i>							
Aroclor-1016 (PCB-1016)	mg/kg	0.042 U	0.047 U	0.043 U	0.043 U	0.04 U	0.043 U
Aroclor-1221 (PCB-1221)	mg/kg	0.042 U	0.047 U	0.043 U	0.043 U	0.04 U	0.043 U
Aroclor-1232 (PCB-1232)	mg/kg	0.042 U	0.047 U	0.043 U	0.043 U	0.04 U	0.043 U
Aroclor-1242 (PCB-1242)	mg/kg	0.042 U	0.047 U	0.043 U	0.043 U	0.04 U	0.043 U
Aroclor-1248 (PCB-1248)	mg/kg	0.054	0.03 J	0.057	0.97	0.18	0.48
Aroclor-1254 (PCB-1254)	mg/kg	0.042 U	0.047 U	0.043 U	0.043 U	0.04 U	0.043 U
Aroclor-1260 (PCB-1260)	mg/kg	0.016 J	0.047 U	0.043 U	0.2	0.074	0.085
Total PCBs	mg/kg	0.07 J	0.03 J	0.057	1.17	0.254	0.565

Notes:

U - Not present at or above the associated value.

J - Estimated concentration.

UJ - Estimated reporting limit.

TABLE 7.1

NORTHERN TRIBUTARY VALIDATED VERIFICATION SAMPLE ANALYTICAL RESULTS SUMMARY
 GM POWERTRAIN BEDFORD FACILITY
 BEDFORD, INDIANA

Sample Area:	P386	P386	P386	P386	P386	P386
Sample Location:	386-26058	386-26059	386-26060	386-26060	386-26062	386-26063
Sample Date:	10/12/2007	10/12/2007	10/12/2007	10/12/2007	10/17/2007	10/17/2007
Sample ID:	S-386-101207-AH-26058	S-386-101207-AH-26059	S-386-101207-AH-26060	S-386-101207-AH-26061	S-386-101707-AH-26062	S-386-101707-AH-26063
Depth (ft):	(0-0.33)	(0-0.33)	(0-0.33)	(0-0.33)	(0-0.33)	(0-0.33)
				(Duplicate)		
Parameters	Units					
PCBs						
Aroclor-1016 (PCB-1016)	mg/kg	0.038 U	0.039 U	0.039 U	0.038 U	0.039 U
Aroclor-1221 (PCB-1221)	mg/kg	0.038 U	0.039 U	0.039 U	0.038 U	0.039 U
Aroclor-1232 (PCB-1232)	mg/kg	0.038 U	0.039 U	0.039 U	0.038 U	0.039 U
Aroclor-1242 (PCB-1242)	mg/kg	0.038 U	0.039 U	0.039 U	0.038 U	0.039 U
Aroclor-1248 (PCB-1248)	mg/kg	0.015 J	0.039 U	0.011 J	0.011 J	1.4
Aroclor-1254 (PCB-1254)	mg/kg	0.038 U	0.039 U	0.039 U	0.038 U	0.039 U
Aroclor-1260 (PCB-1260)	mg/kg	0.011 J	0.039 U	0.039 U	0.011 J	0.35
Total PCBs	mg/kg	0.026 J	0	0.011 J	0.022 J	1.75

Notes:
 U - Not present at or above the associated value.
 J - Estimated concentration.
 UJ - Estimated reporting limit.

TABLE 7.1

NORTHERN TRIBUTARY VALIDATED VERIFICATION SAMPLE ANALYTICAL RESULTS SUMMARY
 GM POWERTRAIN BEDFORD FACILITY
 BEDFORD, INDIANA

<i>Sample Area:</i>	P386	P386	P386	P386	P386	P386
<i>Sample Location:</i>	386-26064	386-26065	386-26066	386-26067	386-26068	386-26069
<i>Sample Date:</i>	10/17/2007	10/17/2007	10/17/2007	10/17/2007	10/17/2007	10/17/2007
<i>Sample ID:</i>	S-386-101707-AH-26064	S-386-101707-AH-26065	S-386-101707-AH-26066	S-386-101707-AH-26067	S-386-101707-AH-26068	S-386-101707-AH-26069
<i>Depth (ft):</i>	(0-0.33)	(0-0.33)	(0-0.33)	(0-0.33)	(0-0.33)	(0-0.33)

<i>Parameters</i>	<i>Units</i>						
<i>PCBs</i>							
Aroclor-1016 (PCB-1016)	mg/kg	0.2 U	0.37 U	0.19 U	0.38 U	0.037 U	0.038 U
Aroclor-1221 (PCB-1221)	mg/kg	0.2 U	0.37 U	0.19 U	0.38 U	0.037 U	0.038 U
Aroclor-1232 (PCB-1232)	mg/kg	0.2 U	0.37 U	0.19 U	0.38 U	0.037 U	0.038 U
Aroclor-1242 (PCB-1242)	mg/kg	0.2 U	0.37 U	0.19 U	0.38 U	0.037 U	0.038 U
Aroclor-1248 (PCB-1248)	mg/kg	2.2	4	0.19 U	4.2	0.016 J	0.037 J
Aroclor-1254 (PCB-1254)	mg/kg	0.2 U	0.37 U	3.1	0.38 U	0.037 U	0.038 U
Aroclor-1260 (PCB-1260)	mg/kg	0.42	0.6	0.19 U	1.1	0.037 U	0.038 U
Total PCBs	mg/kg	2.62	4.6	3.1	5.3	0.016 J	0.037 J

Notes:
 U - Not present at or above the associated value.
 J - Estimated concentration.
 UJ - Estimated reporting limit.

TABLE 7.1

**NORTHERN TRIBUTARY VALIDATED VERIFICATION SAMPLE ANALYTICAL RESULTS SUMMARY
GM POWERTRAIN BEDFORD FACILITY
BEDFORD, INDIANA**

<i>Sample Area:</i>	<i>P386</i>	<i>P386</i>	<i>P386</i>	<i>P386</i>	<i>P386</i>	<i>P386</i>	
<i>Sample Location:</i>	386-26070	386-26070	386-26072	386-26073	386-26074	386-26075	
<i>Sample Date:</i>	10/17/2007	10/17/2007	10/17/2007	10/17/2007	10/17/2007	10/22/2007	
<i>Sample ID:</i>	S-386-101707-AH-26070	S-386-101707-AH-26071	S-386-101707-AH-26072	S-386-101707-AH-26073	S-386-101707-AH-26074	S-386-102207-AF-26075	
<i>Depth (ft):</i>	(0-0.33)	(0-0.33)	(0-0.33)	(0-0.33)	(0-0.33)	(0-0.33)	
		(Duplicate)					
<i>Parameters</i>	<i>Units</i>						
<i>PCBs</i>							
Aroclor-1016 (PCB-1016)	mg/kg	0.038 U	0.038 U	0.037 U	0.041 U	0.042 U	0.037 U
Aroclor-1221 (PCB-1221)	mg/kg	0.038 U	0.038 U	0.037 U	0.041 U	0.042 U	0.037 U
Aroclor-1232 (PCB-1232)	mg/kg	0.038 U	0.038 U	0.037 U	0.041 U	0.042 U	0.037 U
Aroclor-1242 (PCB-1242)	mg/kg	0.038 U	0.038 U	0.037 U	0.041 U	0.042 U	0.037 U
Aroclor-1248 (PCB-1248)	mg/kg	0.029 J	0.049	0.048	0.041 U	0.042 U	0.04
Aroclor-1254 (PCB-1254)	mg/kg	0.038 U	0.038 U	0.037 U	0.041 U	0.042 U	0.037 U
Aroclor-1260 (PCB-1260)	mg/kg	0.038 U	0.038 U	0.037 U	0.041 U	0.042 U	0.037 U
Total PCBs	mg/kg	0.029 J	0.049	0.048	0	0	0.04

Notes:

U - Not present at or above the associated value.

J - Estimated concentration.

UJ - Estimated reporting limit.

TABLE 7.1

NORTHERN TRIBUTARY VALIDATED VERIFICATION SAMPLE ANALYTICAL RESULTS SUMMARY
 GM POWERTRAIN BEDFORD FACILITY
 BEDFORD, INDIANA

<i>Sample Area:</i>	P386	P386	P386	P386	P386	P386
<i>Sample Location:</i>	386-26076	386-26077	386-26078	386-26079	386-26080	386-26080
<i>Sample Date:</i>	10/22/2007	10/22/2007	10/22/2007	10/22/2007	10/22/2007	10/22/2007
<i>Sample ID:</i>	S-386-102207-AF-26076	S-386-102207-AF-26077	S-386-102207-AF-26078	S-386-102207-AF-26079	S-386-102207-AF-26080	S-386-102207-AF-26081
<i>Depth (ft):</i>	(0-0.33)	(0-0.33)	(0-0.33)	(0-0.33)	(0-0.33)	(0-0.33) (Duplicate)

<i>Parameters</i>	<i>Units</i>						
<i>PCBs</i>							
Aroclor-1016 (PCB-1016)	mg/kg	0.044 U	0.043 U	0.04 U	0.04 U	0.04 U	0.042 U
Aroclor-1221 (PCB-1221)	mg/kg	0.044 U	0.043 U	0.04 U	0.04 U	0.04 U	0.042 U
Aroclor-1232 (PCB-1232)	mg/kg	0.044 U	0.043 U	0.04 U	0.04 U	0.04 U	0.042 U
Aroclor-1242 (PCB-1242)	mg/kg	0.044 U	0.043 U	0.04 U	0.04 U	0.04 U	0.042 U
Aroclor-1248 (PCB-1248)	mg/kg	0.097	0.21	0.11	0.9	0.54	0.66
Aroclor-1254 (PCB-1254)	mg/kg	0.044 U	0.043 U	0.04 U	0.04 U	0.04 U	0.042 U
Aroclor-1260 (PCB-1260)	mg/kg	0.029 J	0.042 J	0.031 J	0.1	0.076	0.089
Total PCBs	mg/kg	0.126 J	0.252 J	0.141 J	1	0.616	0.749

Notes:
 U - Not present at or above the associated value.
 J - Estimated concentration.
 UJ - Estimated reporting limit.

TABLE 7.1

**NORTHERN TRIBUTARY VALIDATED VERIFICATION SAMPLE ANALYTICAL RESULTS SUMMARY
GM POWERTRAIN BEDFORD FACILITY
BEDFORD, INDIANA**

<i>Sample Area:</i>	<i>P386</i>	<i>P386</i>	<i>P386</i>	<i>P386</i>	<i>P386</i>	<i>P386</i>	
<i>Sample Location:</i>	386-26082	386-26083	386-26084	386-26085	386-26086	386-26087	
<i>Sample Date:</i>	10/24/2007	10/24/2007	10/24/2007	10/24/2007	10/24/2007	10/24/2007	
<i>Sample ID:</i>	S-386-102407-AF-26082	S-386-102407-AF-26083	S-386-102407-AF-26084	S-386-102407-AF-26085	S-386-102407-AF-26086	S-386-102407-AF-26087	
<i>Depth (ft):</i>	(0-0.33)	(0-0.33)	(0-0.33)	(0-0.33)	(0-0.33)	(0-0.33)	
<i>Parameters</i>	<i>Units</i>						
<i>PCBs</i>							
Aroclor-1016 (PCB-1016)	mg/kg	0.041 U	0.041 U	0.077 U	0.2 U	0.043 U	0.89 U
Aroclor-1221 (PCB-1221)	mg/kg	0.041 U	0.041 U	0.077 U	0.2 U	0.043 U	0.89 U
Aroclor-1232 (PCB-1232)	mg/kg	0.041 U	0.041 U	0.077 U	0.2 U	0.043 U	0.89 U
Aroclor-1242 (PCB-1242)	mg/kg	0.041 U	0.041 U	0.077 U	0.2 U	0.043 U	0.89 U
Aroclor-1248 (PCB-1248)	mg/kg	1.1	0.36	1.7	3.4	0.043 U	12
Aroclor-1254 (PCB-1254)	mg/kg	0.041 U	0.041 U	0.077 U	0.2 U	0.043 U	0.89 U
Aroclor-1260 (PCB-1260)	mg/kg	0.14	0.066	0.21	0.39	0.043 U	0.87 J
Total PCBs	mg/kg	1.24	0.426	1.91	3.79	0	12.87 J

Notes:

U - Not present at or above the associated value.

J - Estimated concentration.

UJ - Estimated reporting limit.

TABLE 7.1

**NORTHERN TRIBUTARY VALIDATED VERIFICATION SAMPLE ANALYTICAL RESULTS SUMMARY
GM POWERTRAIN BEDFORD FACILITY
BEDFORD, INDIANA**

<i>Sample Area:</i>	<i>P386</i>	<i>P386</i>	<i>P386</i>	<i>P386</i>	<i>P386</i>	<i>P386</i>	
<i>Sample Location:</i>	386-26088	386-26089	386-26090	386-26090	386-26092	386-26093	
<i>Sample Date:</i>	10/24/2007	10/24/2007	10/24/2007	10/24/2007	10/24/2007	10/24/2007	
<i>Sample ID:</i>	S-386-102407-AF-26088	S-386-102407-AF-26089	S-386-102407-AF-26090	S-386-102407-AF-26091	S-386-102407-AF-26092	S-386-102407-AF-26093	
<i>Depth (ft):</i>	(0-0.33)	(0-0.33)	(0-0.33)	(0-0.33) (Duplicate)	(0-0.33)	(0-0.33)	
<i>Parameters</i>	<i>Units</i>						
<i>PCBs</i>							
Aroclor-1016 (PCB-1016)	mg/kg	0.042 U	0.045 U	2.1 U	0.9 U	0.88 U	0.045 U
Aroclor-1221 (PCB-1221)	mg/kg	0.042 U	0.045 U	2.1 U	0.9 U	0.88 U	0.045 U
Aroclor-1232 (PCB-1232)	mg/kg	0.042 U	0.045 U	2.1 U	0.9 U	0.88 U	0.045 U
Aroclor-1242 (PCB-1242)	mg/kg	0.042 U	0.045 U	2.1 U	0.9 U	0.88 U	0.045 U
Aroclor-1248 (PCB-1248)	mg/kg	1	1	23	13	10	0.51
Aroclor-1254 (PCB-1254)	mg/kg	0.042 U	0.045 U	2.1 U	0.9 U	0.88 U	0.045 U
Aroclor-1260 (PCB-1260)	mg/kg	0.14	0.092	4	3.5	1.8	0.11
Total PCBs	mg/kg	1.14	1.092	27	16.5	11.8	0.62

Notes:

U - Not present at or above the associated value.

J - Estimated concentration.

UJ - Estimated reporting limit.

TABLE 7.1

**NORTHERN TRIBUTARY VALIDATED VERIFICATION SAMPLE ANALYTICAL RESULTS SUMMARY
GM POWERTRAIN BEDFORD FACILITY
BEDFORD, INDIANA**

<i>Sample Area:</i>	<i>P386</i>	<i>P386</i>	<i>P386</i>	<i>P386</i>	<i>P386</i>	<i>P386</i>	
<i>Sample Location:</i>	386-26099	386-26100	386-26100	386-26102	386-26103	386-26104	
<i>Sample Date:</i>	10/29/2007	10/29/2007	10/29/2007	10/29/2007	10/29/2007	10/29/2007	
<i>Sample ID:</i>	S-386-102907-AH-26099	S-386-102907-AH-26100	S-386-102907-AH-26101	S-386-102907-AH-26102	S-386-102907-AH-26103	S-386-102907-AH-26104	
<i>Depth (ft):</i>	(0-0.33)	(0-0.33)	(0-0.33) (Duplicate)	(0-0.33)	(0-0.33)	(0-0.33)	
<i>Parameters</i>	<i>Units</i>						
PCBs							
Aroclor-1016 (PCB-1016)	mg/kg	0.043 U	0.045 U	0.047 U	0.043 U	0.042 U	0.21 U
Aroclor-1221 (PCB-1221)	mg/kg	0.043 U	0.045 U	0.047 U	0.043 U	0.042 U	0.21 U
Aroclor-1232 (PCB-1232)	mg/kg	0.043 U	0.045 U	0.047 U	0.043 U	0.042 U	0.21 U
Aroclor-1242 (PCB-1242)	mg/kg	0.043 U	0.045 U	0.047 U	0.043 U	0.042 U	0.21 U
Aroclor-1248 (PCB-1248)	mg/kg	0.067	0.41	0.33	0.3	0.72	3.2
Aroclor-1254 (PCB-1254)	mg/kg	0.043 U	0.045 U	0.047 U	0.043 U	0.042 U	0.21 U
Aroclor-1260 (PCB-1260)	mg/kg	0.015 J	0.12	0.11	0.094	0.21	0.68
Total PCBs	mg/kg	0.082 J	0.53	0.44	0.394	0.93	3.88

Notes:

U - Not present at or above the associated value.

J - Estimated concentration.

UJ - Estimated reporting limit.

TABLE 7.1

NORTHERN TRIBUTARY VALIDATED VERIFICATION SAMPLE ANALYTICAL RESULTS SUMMARY
 GM POWERTRAIN BEDFORD FACILITY
 BEDFORD, INDIANA

<i>Sample Area:</i>	P386	P386	P386	P386	P386	P386
<i>Sample Location:</i>	386-26105	386-26106	386-26107	386-26108	386-26109	386-26110
<i>Sample Date:</i>	10/29/2007	10/29/2007	10/31/2007	10/31/2007	10/31/2007	10/31/2007
<i>Sample ID:</i>	S-386-102907-AH-26105	S-386-102907-AH-26106	S-386-103107-AH-26107	S-386-103107-AH-26108	S-386-103107-AH-26109	S-386-103107-AH-26110
<i>Depth (ft):</i>	(0-0.33)	(0-0.33)	(0-0.33)	(0-0.33)	(0-0.33)	(0-0.33)

<i>Parameters</i>	<i>Units</i>						
<i>PCBs</i>							
Aroclor-1016 (PCB-1016)	mg/kg	0.046 U	0.21 U	0.2 U	0.37 U	0.04 U	0.04 U
Aroclor-1221 (PCB-1221)	mg/kg	0.046 U	0.21 U	0.2 U	0.37 U	0.04 U	0.04 U
Aroclor-1232 (PCB-1232)	mg/kg	0.046 U	0.21 U	0.2 U	0.37 U	0.04 U	0.04 U
Aroclor-1242 (PCB-1242)	mg/kg	0.046 U	0.21 U	0.2 U	0.37 U	0.04 U	0.04 U
Aroclor-1248 (PCB-1248)	mg/kg	0.78	2.9	2.2	4.5	0.78	0.15
Aroclor-1254 (PCB-1254)	mg/kg	0.046 U	0.21 U	0.2 U	0.37 U	0.04 U	0.04 U
Aroclor-1260 (PCB-1260)	mg/kg	0.2	0.65	0.67	1.1	0.25	0.048
Total PCBs	mg/kg	0.98	3.55	2.87	5.6	1.03	0.198

Notes:
 U - Not present at or above the associated value.
 J - Estimated concentration.
 UJ - Estimated reporting limit.

TABLE 7.1

**NORTHERN TRIBUTARY VALIDATED VERIFICATION SAMPLE ANALYTICAL RESULTS SUMMARY
GM POWERTRAIN BEDFORD FACILITY
BEDFORD, INDIANA**

<i>Sample Area:</i>	<i>P386</i>	<i>P386</i>	<i>P386</i>	<i>P386</i>	<i>P386</i>	<i>P386</i>
<i>Sample Location:</i>	386-26110	386-26112	386-26113	386-26114	386-26115	386-26116
<i>Sample Date:</i>	10/31/2007	10/31/2007	10/31/2007	10/31/2007	10/31/2007	10/31/2007
<i>Sample ID:</i>	S-386-103107-AH-26111	S-386-103107-AH-26112	S-386-103107-AH-26113	S-386-103107-AH-26114	S-386-103107-AH-26115	S-386-103107-AH-26116
<i>Depth (ft):</i>	(0-0.33) (Duplicate)	(0-0.33)	(0-0.33)	(0-0.33)	(0-0.33)	(0-0.33)
<i>Parameters</i>	<i>Units</i>					
<i>PCBs</i>						
Aroclor-1016 (PCB-1016)	mg/kg	0.041 U	0.042 U	0.2 U	0.76 U	0.039 U
Aroclor-1221 (PCB-1221)	mg/kg	0.041 U	0.042 U	0.2 U	0.76 U	0.039 U
Aroclor-1232 (PCB-1232)	mg/kg	0.041 U	0.042 U	0.2 U	0.76 U	0.039 U
Aroclor-1242 (PCB-1242)	mg/kg	0.041 U	0.042 U	0.2 U	0.76 U	0.039 U
Aroclor-1248 (PCB-1248)	mg/kg	0.19	0.14	2.5	11	0.82
Aroclor-1254 (PCB-1254)	mg/kg	0.041 U	0.042 U	0.2 U	0.76 U	0.039 U
Aroclor-1260 (PCB-1260)	mg/kg	0.064	0.045	0.56	2.3	0.21
Total PCBs	mg/kg	0.254	0.185	3.06	13.3	1.03

Notes:

U - Not present at or above the associated value.

J - Estimated concentration.

UJ - Estimated reporting limit.

TABLE 7.1

**NORTHERN TRIBUTARY VALIDATED VERIFICATION SAMPLE ANALYTICAL RESULTS SUMMARY
GM POWERTRAIN BEDFORD FACILITY
BEDFORD, INDIANA**

<i>Sample Area:</i>	<i>P386</i>	<i>P386</i>	<i>P386</i>	<i>P386</i>	<i>P386</i>	<i>P386</i>	
<i>Sample Location:</i>	386-26117	386-26118	386-26119	386-26120	386-26120	386-26122	
<i>Sample Date:</i>	11/1/2007	11/1/2007	11/1/2007	11/1/2007	11/1/2007	11/5/2007	
<i>Sample ID:</i>	S-386-110107-AH-26117	S-386-110107-AH-26118	S-386-110107-AH-26119	S-386-110107-AH-26120	S-386-110107-AH-26121	S-386-110507-AH-26122	
<i>Depth (ft):</i>	(0-0.33)	(0-0.33)	(0-0.33)	(0-0.33)	(0-0.33) (Duplicate)	(0-0.33)	
<i>Parameters</i>	<i>Units</i>						
<i>PCBs</i>							
Aroclor-1016 (PCB-1016)	mg/kg	0.037 U	0.043 U	0.045 U	0.046 U	0.047 U	0.039 U
Aroclor-1221 (PCB-1221)	mg/kg	0.037 U	0.043 U	0.045 U	0.046 U	0.047 U	0.039 U
Aroclor-1232 (PCB-1232)	mg/kg	0.037 U	0.043 U	0.045 U	0.046 U	0.047 U	0.039 U
Aroclor-1242 (PCB-1242)	mg/kg	0.037 U	0.043 U	0.045 U	0.046 U	0.047 U	0.039 U
Aroclor-1248 (PCB-1248)	mg/kg	0.68	0.043	0.58	0.28	0.26	0.16
Aroclor-1254 (PCB-1254)	mg/kg	0.037 U	0.043 U	0.045 U	0.046 U	0.047 U	0.039 U
Aroclor-1260 (PCB-1260)	mg/kg	0.18	0.026 J	0.2	0.086	0.083	0.059
Total PCBs	mg/kg	0.86	0.069 J	0.78	0.366	0.343	0.219

Notes:

U - Not present at or above the associated value.

J - Estimated concentration.

UJ - Estimated reporting limit.

TABLE 7.1

NORTHERN TRIBUTARY VALIDATED VERIFICATION SAMPLE ANALYTICAL RESULTS SUMMARY
 GM POWERTRAIN BEDFORD FACILITY
 BEDFORD, INDIANA

<i>Sample Area:</i>	P386	P386	P386	P386	P386	P386
<i>Sample Location:</i>	386-26123	386-26124	386-26125	386-26126	386-26127	386-26128
<i>Sample Date:</i>	11/5/2007	11/5/2007	11/5/2007	11/5/2007	11/5/2007	11/5/2007
<i>Sample ID:</i>	S-386-110507-AH-26123	S-386-110507-AH-26124	S-386-110507-AH-26125	S-386-110507-AH-26126	S-386-110507-AH-26127	S-386-110507-AH-26128
<i>Depth (ft):</i>	(0-0.33)	(0-0.33)	(0-0.33)	(0-0.33)	(0-0.33)	(0-0.33)

<i>Parameters</i>	<i>Units</i>						
<i>PCBs</i>							
Aroclor-1016 (PCB-1016)	mg/kg	0.039 U	0.037 U	0.037 U	0.04 U	0.038 U	0.038 U
Aroclor-1221 (PCB-1221)	mg/kg	0.039 U	0.037 U	0.037 U	0.04 U	0.038 U	0.038 U
Aroclor-1232 (PCB-1232)	mg/kg	0.039 U	0.037 U	0.037 U	0.04 U	0.038 U	0.038 U
Aroclor-1242 (PCB-1242)	mg/kg	0.039 U	0.037 U	0.037 U	0.04 U	0.038 U	0.038 U
Aroclor-1248 (PCB-1248)	mg/kg	0.19	0.057	0.01 J	0.28	0.38	0.099
Aroclor-1254 (PCB-1254)	mg/kg	0.039 U	0.037 U	0.037 U	0.04 U	0.038 U	0.038 U
Aroclor-1260 (PCB-1260)	mg/kg	0.056	0.012 J	0.037 U	0.07	0.063	0.011 J
Total PCBs	mg/kg	0.246	0.069 J	0.01 J	0.35	0.443	0.11 J

Notes:
 U - Not present at or above the associated value.
 J - Estimated concentration.
 UJ - Estimated reporting limit.

TABLE 7.1

NORTHERN TRIBUTARY VALIDATED VERIFICATION SAMPLE ANALYTICAL RESULTS SUMMARY
 GM POWERTRAIN BEDFORD FACILITY
 BEDFORD, INDIANA

Sample Area:	P386	P386	P386	P386	P386	P386	
Sample Location:	386-26129	386-26130	386-26130	386-26132	386-26133	386-26134	
Sample Date:	11/5/2007	11/5/2007	11/5/2007	11/5/2007	11/5/2007	11/5/2007	
Sample ID:	S-386-110507-AH-26129	S-386-110507-AH-26130	S-386-110507-AH-26131	S-386-110507-AH-26132	S-386-110507-AH-26133	S-386-110507-AH-26134	
Depth (ft):	(0-0.33)	(0-0.33)	(0-0.33)	(0-0.33)	(0-0.33)	(0-0.33)	
			(Duplicate)				
Parameters	Units						
PCBs							
Aroclor-1016 (PCB-1016)	mg/kg	0.074 U	0.18 U	0.18 U	0.19 U	0.04 U	0.4 U
Aroclor-1221 (PCB-1221)	mg/kg	0.074 U	0.18 U	0.18 U	0.19 U	0.04 U	0.4 U
Aroclor-1232 (PCB-1232)	mg/kg	0.074 U	0.18 U	0.18 U	0.19 U	0.04 U	0.4 U
Aroclor-1242 (PCB-1242)	mg/kg	0.074 U	0.18 U	0.18 U	0.19 U	0.04 U	0.4 U
Aroclor-1248 (PCB-1248)	mg/kg	1.7	3.8	3.4	3.6	0.52	3.4
Aroclor-1254 (PCB-1254)	mg/kg	0.074 U	0.18 U	0.18 U	0.19 U	0.04 U	0.4 U
Aroclor-1260 (PCB-1260)	mg/kg	0.34	1.1	0.96	0.85	0.15	0.86
Total PCBs	mg/kg	2.04	4.9	4.36	4.45	0.67	4.26

Notes:
 U - Not present at or above the associated value.
 J - Estimated concentration.
 UJ - Estimated reporting limit.

TABLE 7.1

NORTHERN TRIBUTARY VALIDATED VERIFICATION SAMPLE ANALYTICAL RESULTS SUMMARY
 GM POWERTRAIN BEDFORD FACILITY
 BEDFORD, INDIANA

<i>Sample Area:</i>	P386	P386	P386	P386	P386	P386
<i>Sample Location:</i>	386-26135	386-26178	386-26185	386-26186	386-26188	386-26189
<i>Sample Date:</i>	11/5/2007	11/12/2007	11/12/2007	11/12/2007	12/14/2007	12/14/2007
<i>Sample ID:</i>	S-386-110507-AH-26135	S-386-111207-AH-26178	S-386-111207-AH-26185	S-386-111207-AH-26186	S-386-121407-CH-26188	S-386-121407-CH-26189
<i>Depth (ft):</i>	(0-0.33)	(0-0.33)	(0-0.33)	(0-0.33)	(0-0.33)	(0-0.33)

<i>Parameters</i>	<i>Units</i>						
<i>PCBs</i>							
Aroclor-1016 (PCB-1016)	mg/kg	0.75 U	0.037 U	0.39 U	0.74 U	0.044 U	0.043 U
Aroclor-1221 (PCB-1221)	mg/kg	0.75 U	0.037 U	0.39 U	0.74 U	0.044 U	0.043 U
Aroclor-1232 (PCB-1232)	mg/kg	0.75 U	0.037 U	0.39 U	0.74 U	0.044 U	0.043 U
Aroclor-1242 (PCB-1242)	mg/kg	0.75 U	0.037 U	0.39 U	0.74 U	0.044 U	0.043 U
Aroclor-1248 (PCB-1248)	mg/kg	8.6	0.29	6.6	12	0.044 U	0.043 U
Aroclor-1254 (PCB-1254)	mg/kg	0.75 U	0.037 U	0.39 U	0.74 U	0.044 U	0.043 U
Aroclor-1260 (PCB-1260)	mg/kg	2.2	0.091	0.64	0.98	0.044 U	0.043 U
Total PCBs	mg/kg	10.8	0.381	7.24	12.98	0	0

Notes:
 U - Not present at or above the associated value.
 J - Estimated concentration.
 UJ - Estimated reporting limit.

TABLE 7.1

NORTHERN TRIBUTARY VALIDATED VERIFICATION SAMPLE ANALYTICAL RESULTS SUMMARY
 GM POWERTRAIN BEDFORD FACILITY
 BEDFORD, INDIANA

<i>Sample Area:</i>	P386	P386	P386	P386	P386	P386
<i>Sample Location:</i>	386-26190	386-26190	386-26192	386-26193	386-26194	386-26195
<i>Sample Date:</i>	12/14/2007	12/14/2007	12/14/2007	12/14/2007	12/14/2007	12/14/2007
<i>Sample ID:</i>	S-386-121407-CH-26190	S-386-121407-CH-26191	S-386-121407-CH-26192	S-386-121407-CH-26193	S-386-121407-CH-26194	S-386-121407-CH-26195
<i>Depth (ft):</i>	(0-0.33)	(0-0.33)	(0-0.33)	(0-0.33)	(0-0.33)	(0-0.33)
		(Duplicate)				

<i>Parameters</i>	<i>Units</i>						
<i>PCBs</i>							
Aroclor-1016 (PCB-1016)	mg/kg	0.044 U	0.045 U	0.046 U	0.044 U	0.042 U	0.042 U
Aroclor-1221 (PCB-1221)	mg/kg	0.044 U	0.045 U	0.046 U	0.044 U	0.042 U	0.042 U
Aroclor-1232 (PCB-1232)	mg/kg	0.044 U	0.045 U	0.046 U	0.044 U	0.042 U	0.042 U
Aroclor-1242 (PCB-1242)	mg/kg	0.044 U	0.045 U	0.046 U	0.044 U	0.042 U	0.042 U
Aroclor-1248 (PCB-1248)	mg/kg	0.044 U	0.045 U	0.046 U	0.044 U	0.042 U	0.042 U
Aroclor-1254 (PCB-1254)	mg/kg	0.044 U	0.045 U	0.046 U	0.044 U	0.042 U	0.042 U
Aroclor-1260 (PCB-1260)	mg/kg	0.044 U	0.045 U	0.046 U	0.044 U	0.042 U	0.042 U
Total PCBs	mg/kg	0	0	0	0	0	0

Notes:
 U - Not present at or above the associated value.
 J - Estimated concentration.
 UJ - Estimated reporting limit.

TABLE 7.1

NORTHERN TRIBUTARY VALIDATED VERIFICATION SAMPLE ANALYTICAL RESULTS SUMMARY
 GM POWERTRAIN BEDFORD FACILITY
 BEDFORD, INDIANA

<i>Sample Area:</i>	P386	P386	P386	P386	P386	P386
<i>Sample Location:</i>	386-26196	386-26197	386-26198	386-26199	386-26204	386-26205
<i>Sample Date:</i>	12/14/2007	12/14/2007	12/14/2007	12/19/2007	12/19/2007	12/19/2007
<i>Sample ID:</i>	S-386-121407-CH-26196	S-386-121407-CH-26197	S-386-121407-CH-26198	S-386-121907-AH-26199	S-386-121907-AH-26204	S-386-121907-AH-26205
<i>Depth (ft):</i>	(0-0.33)	(0-0.33)	(0-0.33)	(0-0.33)	(0-0.33)	(0-0.33)

<i>Parameters</i>	<i>Units</i>						
<i>PCBs</i>							
Aroclor-1016 (PCB-1016)	mg/kg	0.043 U	0.42 U	0.21 U	0.044 U	0.047 U	0.047 U
Aroclor-1221 (PCB-1221)	mg/kg	0.043 U	0.42 U	0.21 U	0.044 U	0.047 U	0.047 U
Aroclor-1232 (PCB-1232)	mg/kg	0.043 U	0.42 U	0.21 U	0.044 U	0.047 U	0.047 U
Aroclor-1242 (PCB-1242)	mg/kg	0.043 U	0.42 U	0.21 U	0.044 U	0.047 U	0.047 U
Aroclor-1248 (PCB-1248)	mg/kg	0.059	2.3	0.66	0.024 J	0.047 U	0.047 U
Aroclor-1254 (PCB-1254)	mg/kg	0.043 U	0.42 U	0.21 U	0.044 U	0.047 U	0.047 U
Aroclor-1260 (PCB-1260)	mg/kg	0.043 U	0.42 U	0.21 U	0.044 U	0.047 U	0.047 U
Total PCBs	mg/kg	0.059	2.3	0.66	0.024 J	0	0

Notes:
 U - Not present at or above the associated value.
 J - Estimated concentration.
 UJ - Estimated reporting limit.

TABLE 7.1

**NORTHERN TRIBUTARY VALIDATED VERIFICATION SAMPLE ANALYTICAL RESULTS SUMMARY
GM POWERTRAIN BEDFORD FACILITY
BEDFORD, INDIANA**

<i>Sample Area:</i>	<i>P386</i>	<i>P386</i>	<i>P386</i>	<i>P386</i>	<i>P386</i>	<i>P386</i>
<i>Sample Location:</i>	386-26206	386-26207	386-31286	386-31287	386-31288	386-31289
<i>Sample Date:</i>	12/19/2007	12/19/2007	10/18/2007	10/18/2007	10/18/2007	10/18/2007
<i>Sample ID:</i>	S-386-121907-AH-26206	S-386-121907-AH-26207	S-386-101807-AH-31286	S-386-101807-AH-31287	S-386-101807-AH-31288	S-386-101807-AH-31289
<i>Depth (ft):</i>	(0-0.33)	(0-0.33)	(0-0.33)	(0-0.33)	(0-0.33)	(0-0.33)

<i>Parameters</i>	<i>Units</i>						
<i>PCBs</i>							
Aroclor-1016 (PCB-1016)	mg/kg	0.043 U	0.045 U	0.042 U	0.046 U	0.045 U	0.045 U
Aroclor-1221 (PCB-1221)	mg/kg	0.043 U	0.045 U	0.042 U	0.046 U	0.045 U	0.045 U
Aroclor-1232 (PCB-1232)	mg/kg	0.043 U	0.045 U	0.042 U	0.046 U	0.045 U	0.045 U
Aroclor-1242 (PCB-1242)	mg/kg	0.043 U	0.045 U	0.042 U	0.046 U	0.045 U	0.045 U
Aroclor-1248 (PCB-1248)	mg/kg	0.39	0.27	1.1	0.18	1.2	0.76
Aroclor-1254 (PCB-1254)	mg/kg	0.043 U	0.045 U	0.042 U	0.046 U	0.045 U	0.045 U
Aroclor-1260 (PCB-1260)	mg/kg	0.1	0.093	0.19	0.04 J	0.32	0.34
Total PCBs	mg/kg	0.49	0.363	1.29	0.22 J	1.52	1.1

Notes:

U - Not present at or above the associated value.

J - Estimated concentration.

UJ - Estimated reporting limit.

TABLE 7.1

NORTHERN TRIBUTARY VALIDATED VERIFICATION SAMPLE ANALYTICAL RESULTS SUMMARY
 GM POWERTRAIN BEDFORD FACILITY
 BEDFORD, INDIANA

<i>Sample Area:</i>	P386	P386	P386	P386	P386	P386
<i>Sample Location:</i>	386-31290	386-31290	386-31292	386-31293	386-31294	386-31295
<i>Sample Date:</i>	10/18/2007	10/18/2007	10/18/2007	10/18/2007	10/18/2007	10/18/2007
<i>Sample ID:</i>	S-386-101807-AH-31290	S-386-101807-AH-31291	S-386-101807-AH-31292	S-386-101807-AH-31293	S-386-101807-AH-31294	S-386-101807-AH-31295
<i>Depth (ft):</i>	(0-0.33)	(0-0.33) (Duplicate)	(0-0.33)	(0-0.33)	(0-0.33)	(0-0.33)

<i>Parameters</i>	<i>Units</i>						
<i>PCBs</i>							
Aroclor-1016 (PCB-1016)	mg/kg	0.038 U	0.04 U	0.04 U	0.045 U	0.046 U	0.051 U
Aroclor-1221 (PCB-1221)	mg/kg	0.038 U	0.04 U	0.04 U	0.045 U	0.046 U	0.051 U
Aroclor-1232 (PCB-1232)	mg/kg	0.038 U	0.04 U	0.04 U	0.045 U	0.046 U	0.051 U
Aroclor-1242 (PCB-1242)	mg/kg	0.038 U	0.04 U	0.04 U	0.045 U	0.046 U	0.051 U
Aroclor-1248 (PCB-1248)	mg/kg	0.018 J	0.011 J	0.02 J	0.045 U	0.01 J	0.051 U
Aroclor-1254 (PCB-1254)	mg/kg	0.038 U	0.04 U	0.04 U	0.045 U	0.046 U	0.051 U
Aroclor-1260 (PCB-1260)	mg/kg	0.03 J	0.018 J	0.042	0.045 U	0.046 U	0.051 U
Total PCBs	mg/kg	0.048 J	0.029 J	0.062 J	0	0.01 J	0

Notes:
 U - Not present at or above the associated value.
 J - Estimated concentration.
 UJ - Estimated reporting limit.

TABLE 7.1

**NORTHERN TRIBUTARY VALIDATED VERIFICATION SAMPLE ANALYTICAL RESULTS SUMMARY
GM POWERTRAIN BEDFORD FACILITY
BEDFORD, INDIANA**

<i>Sample Area:</i>	<i>P386</i>	<i>P386</i>	<i>P386</i>	<i>P386</i>	<i>P386</i>	<i>P386</i>	
<i>Sample Location:</i>	386-31296	386-31392	386-31392	386-31394	386-31395	386-31396	
<i>Sample Date:</i>	10/18/2007	11/15/2007	11/15/2007	11/15/2007	11/15/2007	11/15/2007	
<i>Sample ID:</i>	S-386-101807-AH-31296	S-386-111507-AH-31392	S-386-111507-AH-31393	S-386-111507-AH-31394	S-386-111507-AH-31395	S-386-111507-AH-31396	
<i>Depth (ft):</i>	(0-0.33)	(0-0.33)	(0-0.33)	(0-0.33)	(0-0.33)	(0-0.33)	
			(Duplicate)				
<i>Parameters</i>	<i>Units</i>						
<i>PCBs</i>							
Aroclor-1016 (PCB-1016)	mg/kg	0.046 U	0.035 U	0.035 U	0.18 U	0.039 U	0.17 U
Aroclor-1221 (PCB-1221)	mg/kg	0.046 U	0.035 U	0.035 U	0.18 U	0.039 U	0.17 U
Aroclor-1232 (PCB-1232)	mg/kg	0.046 U	0.035 U	0.035 U	0.18 U	0.039 U	0.17 U
Aroclor-1242 (PCB-1242)	mg/kg	0.046 U	0.035 U	0.035 U	0.18 U	0.039 U	0.17 U
Aroclor-1248 (PCB-1248)	mg/kg	0.046 U	1.3	0.85	2.2	0.24	2.7
Aroclor-1254 (PCB-1254)	mg/kg	0.046 U	0.035 U	0.035 U	0.18 U	0.039 U	0.17 U
Aroclor-1260 (PCB-1260)	mg/kg	0.046 U	0.27	0.13	0.38	0.082	0.25
Total PCBs	mg/kg	0	1.57	0.98	2.58	0.322	2.95

Notes:

U - Not present at or above the associated value.

J - Estimated concentration.

UJ - Estimated reporting limit.

TABLE 7.1

**NORTHERN TRIBUTARY VALIDATED VERIFICATION SAMPLE ANALYTICAL RESULTS SUMMARY
GM POWERTRAIN BEDFORD FACILITY
BEDFORD, INDIANA**

<i>Sample Area:</i>	<i>P386</i>	<i>P386</i>	<i>P386</i>	<i>P386</i>	<i>P386</i>	<i>P386</i>	
<i>Sample Location:</i>	386-31397	386-31398	386-31399	386-31400	386-31400	386-31404	
<i>Sample Date:</i>	11/15/2007	11/15/2007	11/15/2007	11/15/2007	11/15/2007	11/15/2007	
<i>Sample ID:</i>	S-386-111507-AH-31397	S-386-111507-AH-31398	S-386-111507-AH-31399	S-386-111507-AH-31400	S-386-111507-AH-31401	S-386-111507-AH-31404	
<i>Depth (ft):</i>	(0-0.33)	(0-0.33)	(0-0.33)	(0-0.33)	(0-0.33) (Duplicate)	(0-0.33)	
<i>Parameters</i>	<i>Units</i>						
<i>PCBs</i>							
Aroclor-1016 (PCB-1016)	mg/kg	0.036 U	0.037 U	0.24 U	0.24 U	0.046 U	0.041 U
Aroclor-1221 (PCB-1221)	mg/kg	0.036 U	0.037 U	0.24 U	0.24 U	0.046 U	0.041 U
Aroclor-1232 (PCB-1232)	mg/kg	0.036 U	0.037 U	0.24 U	0.24 U	0.046 U	0.041 U
Aroclor-1242 (PCB-1242)	mg/kg	0.036 U	0.037 U	0.24 U	0.24 U	0.046 U	0.041 U
Aroclor-1248 (PCB-1248)	mg/kg	0.12	0.17	3.7	2.5	1.1	0.041 U
Aroclor-1254 (PCB-1254)	mg/kg	0.036 U	0.037 U	0.24 U	0.24 U	0.046 U	0.041 U
Aroclor-1260 (PCB-1260)	mg/kg	0.055	0.06	1.3	0.14 J	0.2	0.041 U
Total PCBs	mg/kg	0.175	0.23	5	2.64 J	1.3	0

Notes:

U - Not present at or above the associated value.

J - Estimated concentration.

UJ - Estimated reporting limit.

TABLE 7.1

NORTHERN TRIBUTARY VALIDATED VERIFICATION SAMPLE ANALYTICAL RESULTS SUMMARY
 GM POWERTRAIN BEDFORD FACILITY
 BEDFORD, INDIANA

<i>Sample Area:</i>	P386	P386	P386	P386	P386	P386
<i>Sample Location:</i>	386-31405	386-31406	386-31407	386-31408	386-31409	386-31410
<i>Sample Date:</i>	11/15/2007	11/15/2007	11/15/2007	11/15/2007	11/15/2007	11/16/2007
<i>Sample ID:</i>	S-386-111507-AH-31405	S-386-111507-AH-31406	S-386-111507-AH-31407	S-386-111507-AH-31408	S-386-111507-AH-31409	S-386-111607-AH-31410
<i>Depth (ft):</i>	(0-0.33)	(0-0.33)	(0-0.33)	(0-0.33)	(0-0.33)	(0-1.5)

<i>Parameters</i>	<i>Units</i>						
<i>PCBs</i>							
Aroclor-1016 (PCB-1016)	mg/kg	2 U	0.74 U	0.041 U	0.044 U	0.043 U	0.037 U
Aroclor-1221 (PCB-1221)	mg/kg	2 U	0.74 U	0.041 U	0.044 U	0.043 U	0.037 U
Aroclor-1232 (PCB-1232)	mg/kg	2 U	0.74 U	0.041 U	0.044 U	0.043 U	0.037 U
Aroclor-1242 (PCB-1242)	mg/kg	2 U	0.74 U	0.041 U	0.044 U	0.043 U	0.037 U
Aroclor-1248 (PCB-1248)	mg/kg	27	10	0.16	0.34	0.24	0.54
Aroclor-1254 (PCB-1254)	mg/kg	2 U	0.74 U	0.041 U	0.044 U	0.043 U	0.037 U
Aroclor-1260 (PCB-1260)	mg/kg	2	0.87	0.07	0.068	0.05	0.23
Total PCBs	mg/kg	29	10.87	0.23	0.408	0.29	0.77

Notes:
 U - Not present at or above the associated value.
 J - Estimated concentration.
 UJ - Estimated reporting limit.

TABLE 7.1

**NORTHERN TRIBUTARY VALIDATED VERIFICATION SAMPLE ANALYTICAL RESULTS SUMMARY
GM POWERTRAIN BEDFORD FACILITY
BEDFORD, INDIANA**

<i>Sample Area:</i>	<i>P386</i>	<i>P386</i>	<i>P386</i>	<i>P386</i>	<i>P386</i>	<i>P386</i>
<i>Sample Location:</i>	386-31410	386-31412	386-31413	386-31414	386-31415	386-31416
<i>Sample Date:</i>	11/16/2007	11/16/2007	11/16/2007	11/16/2007	11/16/2007	11/16/2007
<i>Sample ID:</i>	S-386-111607-AH-31411	S-386-111607-AH-31412	S-386-111607-AH-31413	S-386-111607-AH-31414	S-386-111607-AH-31415	S-386-111607-AH-31416
<i>Depth (ft):</i>	(0-1.5) (Duplicate)	(1.5-3)	(0-2.5)	(0-6)	(0-5)	(0-3)
<i>Parameters</i>	<i>Units</i>					
PCBs						
Aroclor-1016 (PCB-1016)	mg/kg	0.036 U	0.038 U	0.19 U	0.36 U	0.39 U
Aroclor-1221 (PCB-1221)	mg/kg	0.036 U	0.038 U	0.19 U	0.36 U	0.39 U
Aroclor-1232 (PCB-1232)	mg/kg	0.036 U	0.038 U	0.19 U	0.36 U	0.39 U
Aroclor-1242 (PCB-1242)	mg/kg	0.036 U	0.038 U	0.19 U	0.36 U	0.39 U
Aroclor-1248 (PCB-1248)	mg/kg	0.63	0.027 J	2.2	5.5	6.6
Aroclor-1254 (PCB-1254)	mg/kg	0.036 U	0.038 U	0.19 U	0.36 U	0.39 U
Aroclor-1260 (PCB-1260)	mg/kg	0.26	0.013 J	0.66	0.42	0.48
Total PCBs	mg/kg	0.89	0.04 J	2.86	5.92	7.08

Notes:

U - Not present at or above the associated value.

J - Estimated concentration.

UJ - Estimated reporting limit.

TABLE 7.1

**NORTHERN TRIBUTARY VALIDATED VERIFICATION SAMPLE ANALYTICAL RESULTS SUMMARY
GM POWERTRAIN BEDFORD FACILITY
BEDFORD, INDIANA**

<i>Sample Area:</i>	<i>P386</i>	<i>P387</i>	<i>P387</i>	<i>P387</i>	<i>P387</i>	<i>P387</i>
<i>Sample Location:</i>	386-31417	387-26095	387-26096	387-26097	387-26098	387-26170
<i>Sample Date:</i>	11/16/2007	10/29/2007	10/29/2007	10/29/2007	10/29/2007	11/8/2007
<i>Sample ID:</i>	S-386-111607-AH-31417	S-387-102907-AH-26095	S-387-102907-AH-26096	S-387-102907-AH-26097	S-387-102907-AH-26098	S-387-110807-AH-26170
<i>Depth (ft):</i>	(0-3)	(0-0.33)	(0-0.33)	(0-0.33)	(0-0.33)	(0-0.33)

<i>Parameters</i>	<i>Units</i>						
<i>PCBs</i>							
Aroclor-1016 (PCB-1016)	mg/kg	0.39 U	0.042 U	0.053 U	0.045 U	0.046 U	0.046 U
Aroclor-1221 (PCB-1221)	mg/kg	0.39 U	0.042 U	0.053 U	0.045 U	0.046 U	0.046 U
Aroclor-1232 (PCB-1232)	mg/kg	0.39 U	0.042 U	0.053 U	0.045 U	0.046 U	0.046 U
Aroclor-1242 (PCB-1242)	mg/kg	0.39 U	0.042 U	0.053 U	0.045 U	0.046 U	0.046 U
Aroclor-1248 (PCB-1248)	mg/kg	7	0.042 U	0.82	1.5	0.17	1
Aroclor-1254 (PCB-1254)	mg/kg	0.39 U	0.042 U	0.053 U	0.045 U	0.046 U	0.046 U
Aroclor-1260 (PCB-1260)	mg/kg	0.5	0.042 U	0.22	0.58	0.067	0.22
Total PCBs	mg/kg	7.5	0	1.04	2.08	0.237	1.22

Notes:

U - Not present at or above the associated value.

J - Estimated concentration.

UJ - Estimated reporting limit.

TABLE 7.1

**NORTHERN TRIBUTARY VALIDATED VERIFICATION SAMPLE ANALYTICAL RESULTS SUMMARY
GM POWERTRAIN BEDFORD FACILITY
BEDFORD, INDIANA**

<i>Sample Area:</i>	<i>P387</i>	<i>P389</i>	<i>P393</i>	<i>P393</i>	<i>P393</i>	<i>P393</i>
<i>Sample Location:</i>	387-26170	389-26094	393-26145	393-26146	393-26147	393-26148
<i>Sample Date:</i>	11/8/2007	10/29/2007	11/8/2007	11/8/2007	11/8/2007	11/8/2007
<i>Sample ID:</i>	S-387-110807-AH-26171	S-389-102907-AH-26094	S-393-110807-AH-26145	S-393-110807-AH-26146	S-393-110807-AH-26147	S-393-110807-AH-26148
<i>Depth (ft):</i>	(0-0.33) (Duplicate)	(0-0.33)	(0-0.33)	(0-0.33)	(0-0.33)	(0-0.33)
<i>Parameters</i>	<i>Units</i>					
<i>PCBs</i>						
Aroclor-1016 (PCB-1016)	mg/kg	0.048 U	0.044 U	0.043 U	0.043 U	0.044 U
Aroclor-1221 (PCB-1221)	mg/kg	0.048 U	0.044 U	0.043 U	0.043 U	0.044 U
Aroclor-1232 (PCB-1232)	mg/kg	0.048 U	0.044 U	0.043 U	0.043 U	0.044 U
Aroclor-1242 (PCB-1242)	mg/kg	0.048 U	0.044 U	0.043 U	0.043 U	0.044 U
Aroclor-1248 (PCB-1248)	mg/kg	1.2	0.57	0.016 J	0.22	0.044 U
Aroclor-1254 (PCB-1254)	mg/kg	0.048 U	0.044 U	0.043 U	0.043 U	0.044 U
Aroclor-1260 (PCB-1260)	mg/kg	0.3	0.14	0.043 U	0.083	0.044 U
Total PCBs	mg/kg	1.5	0.71	0.016 J	0.303	0

Notes:

U - Not present at or above the associated value.

J - Estimated concentration.

UJ - Estimated reporting limit.

TABLE 7.1

NORTHERN TRIBUTARY VALIDATED VERIFICATION SAMPLE ANALYTICAL RESULTS SUMMARY
 GM POWERTRAIN BEDFORD FACILITY
 BEDFORD, INDIANA

<i>Sample Area:</i>	<i>P393</i>	<i>P393</i>	<i>P393</i>	<i>P393</i>	<i>P393</i>	<i>P393</i>
<i>Sample Location:</i>	393-26149	393-26150	393-26150	393-26152	393-26153	393-26154
<i>Sample Date:</i>	11/8/2007	11/8/2007	11/8/2007	11/8/2007	11/8/2007	11/8/2007
<i>Sample ID:</i>	S-393-110807-AH-26149	S-393-110807-AH-26150	S-393-110807-AH-26151	S-393-110807-AH-26152	S-393-110807-AH-26153	S-393-110807-AH-26154
<i>Depth (ft):</i>	(0-0.33)	(0-0.33)	(0-0.33)	(0-0.33)	(0-0.33)	(0-0.33)
			(Duplicate)			
<i>Parameters</i>	<i>Units</i>					
<i>PCBs</i>						
Aroclor-1016 (PCB-1016)	mg/kg	0.045 U	0.042 U	0.042 U	0.043 U	0.044 U
Aroclor-1221 (PCB-1221)	mg/kg	0.045 U	0.042 U	0.042 U	0.043 U	0.044 U
Aroclor-1232 (PCB-1232)	mg/kg	0.045 U	0.042 U	0.042 U	0.043 U	0.044 U
Aroclor-1242 (PCB-1242)	mg/kg	0.045 U	0.042 U	0.042 U	0.043 U	0.044 U
Aroclor-1248 (PCB-1248)	mg/kg	0.045 U	0.042 U	0.023 J	0.044	0.021 J
Aroclor-1254 (PCB-1254)	mg/kg	0.045 U	0.042 U	0.042 U	0.043 U	0.044 U
Aroclor-1260 (PCB-1260)	mg/kg	0.045 U	0.042 U	0.042 U	0.021 J	0.044 U
Total PCBs	mg/kg	0	0	0.023 J	0.065 J	0.021 J

Notes:
 U - Not present at or above the associated value.
 J - Estimated concentration.
 UJ - Estimated reporting limit.

TABLE 7.1

NORTHERN TRIBUTARY VALIDATED VERIFICATION SAMPLE ANALYTICAL RESULTS SUMMARY
 GM POWERTRAIN BEDFORD FACILITY
 BEDFORD, INDIANA

<i>Sample Area:</i>	P393	P393	P393	P393	P393	P393
<i>Sample Location:</i>	393-26155	393-26156	393-26157	393-26158	393-26159	393-26160
<i>Sample Date:</i>	11/8/2007	11/8/2007	11/8/2007	11/8/2007	11/8/2007	11/8/2007
<i>Sample ID:</i>	S-393-110807-AH-26155	S-393-110807-AH-26156	S-393-110807-AH-26157	S-393-110807-AH-26158	S-393-110807-AH-26159	S-393-110807-AH-26160
<i>Depth (ft):</i>	(0-0.33)	(0-0.33)	(0-0.33)	(0-0.33)	(0-0.33)	(0-0.33)

<i>Parameters</i>	<i>Units</i>						
<i>PCBs</i>							
Aroclor-1016 (PCB-1016)	mg/kg	0.039 U	0.043 U	0.043 U	0.041 U	0.041 U	0.043 U
Aroclor-1221 (PCB-1221)	mg/kg	0.039 U	0.043 U	0.043 U	0.041 U	0.041 U	0.043 U
Aroclor-1232 (PCB-1232)	mg/kg	0.039 U	0.043 U	0.043 U	0.041 U	0.041 U	0.043 U
Aroclor-1242 (PCB-1242)	mg/kg	0.039 U	0.043 U	0.043 U	0.041 U	0.041 U	0.043 U
Aroclor-1248 (PCB-1248)	mg/kg	0.019 J	0.035 J	0.041 J	0.071	0.041 U	0.028 J
Aroclor-1254 (PCB-1254)	mg/kg	0.039 U	0.043 U	0.043 U	0.041 U	0.041 U	0.043 U
Aroclor-1260 (PCB-1260)	mg/kg	0.039 U	0.021 J	0.03 J	0.028 J	0.041 U	0.02 J
Total PCBs	mg/kg	0.019 J	0.056 J	0.071 J	0.099 J	0	0.048 J

Notes:
 U - Not present at or above the associated value.
 J - Estimated concentration.
 UJ - Estimated reporting limit.

TABLE 7.1

NORTHERN TRIBUTARY VALIDATED VERIFICATION SAMPLE ANALYTICAL RESULTS SUMMARY
 GM POWERTRAIN BEDFORD FACILITY
 BEDFORD, INDIANA

<i>Sample Area:</i>	P393	P393	P393	P393	P393	P393
<i>Sample Location:</i>	393-26160	393-26162	393-26163	393-26164	393-26165	393-26166
<i>Sample Date:</i>	11/8/2007	11/8/2007	11/8/2007	11/8/2007	11/8/2007	11/8/2007
<i>Sample ID:</i>	S-393-110807-AH-26161	S-393-110807-AH-26162	S-393-110807-AH-26163	S-393-110807-AH-26164	S-393-110807-AH-26165	S-393-110807-AH-26166
<i>Depth (ft):</i>	(0-0.33) (Duplicate)	(0-0.33)	(0-0.33)	(0-0.33)	(0-0.33)	(0-0.33)

<i>Parameters</i>	<i>Units</i>						
<i>PCBs</i>							
Aroclor-1016 (PCB-1016)	mg/kg	0.044 U	0.041 U	0.042 U	0.042 U	0.042 U	0.043 U
Aroclor-1221 (PCB-1221)	mg/kg	0.044 U	0.041 U	0.042 U	0.042 U	0.042 U	0.043 U
Aroclor-1232 (PCB-1232)	mg/kg	0.044 U	0.041 U	0.042 U	0.042 U	0.042 U	0.043 U
Aroclor-1242 (PCB-1242)	mg/kg	0.044 U	0.041 U	0.042 U	0.042 U	0.042 U	0.043 U
Aroclor-1248 (PCB-1248)	mg/kg	0.025 J	0.21	0.22	0.15	0.013 J	0.043 U
Aroclor-1254 (PCB-1254)	mg/kg	0.044 U	0.041 U	0.042 U	0.042 U	0.042 U	0.043 U
Aroclor-1260 (PCB-1260)	mg/kg	0.021 J	0.13	0.079	0.063	0.042 U	0.043 U
Total PCBs	mg/kg	0.046 J	0.34	0.299	0.213	0.013 J	0

Notes:
 U - Not present at or above the associated value.
 J - Estimated concentration.
 UJ - Estimated reporting limit.

TABLE 7.1

NORTHERN TRIBUTARY VALIDATED VERIFICATION SAMPLE ANALYTICAL RESULTS SUMMARY
GM POWERTRAIN BEDFORD FACILITY
BEDFORD, INDIANA

<i>Sample Area:</i>	<i>P393</i>	<i>P393</i>	<i>P393</i>
<i>Sample Location:</i>	393-26167	393-26168	393-26169
<i>Sample Date:</i>	11/8/2007	11/8/2007	11/8/2007
<i>Sample ID:</i>	S-393-110807-AH-26167	S-393-110807-AH-26168	S-393-110807-AH-26169
<i>Depth (ft):</i>	(0-0.33)	(0-0.33)	(0-0.33)

<i>Parameters</i>	<i>Units</i>			
<i>PCBs</i>				
Aroclor-1016 (PCB-1016)	mg/kg	0.041 U	0.042 U	0.042 U
Aroclor-1221 (PCB-1221)	mg/kg	0.041 U	0.042 U	0.042 U
Aroclor-1232 (PCB-1232)	mg/kg	0.041 U	0.042 U	0.042 U
Aroclor-1242 (PCB-1242)	mg/kg	0.041 U	0.042 U	0.042 U
Aroclor-1248 (PCB-1248)	mg/kg	0.11	0.3	0.25
Aroclor-1254 (PCB-1254)	mg/kg	0.041 U	0.042 U	0.042 U
Aroclor-1260 (PCB-1260)	mg/kg	0.052	0.16	0.12
Total PCBs	mg/kg	0.162	0.46	0.37

Notes:
U - Not present at or above the associated value.
J - Estimated concentration.
UJ - Estimated reporting limit.

TABLE 7.2

PARCEL 201 VALIDATED DELINEATION SAMPLE ANALYTICAL RESULTS SUMMARY
 GM POWERTRAIN BEDFORD FACILITY
 BEDFORD, INDIANA

Sample Area:	P201	P201	P201	P201	P201	P201
Sample Location:	201-31498	201-31499	201-31500	201-31500	201-31502	BH-614
Sample Date:	12/13/2007	12/13/2007	12/13/2007	12/13/2007	12/13/2007	11/19/2007
Sample ID:	S-201-121307-CH-31498	S-201-121307-CH-31499	S-201-121307-CH-31500	S-201-121307-CH-31501	S-201-121307-CH-31502	S-201-111907-CH-31418
Depth (ft):	(0-0.33)	(0-0.33)	(0-0.33)	(0-0.33) (Duplicate)	(0-0.33)	(0-2)
Parameters	Units					
PCBs						
Aroclor-1016 (PCB-1016)	mg/kg	0.84 U	0.052 U	42 U	43 U	0.44 U
Aroclor-1221 (PCB-1221)	mg/kg	0.84 U	0.052 U	42 U	43 U	0.44 U
Aroclor-1232 (PCB-1232)	mg/kg	0.84 U	0.052 U	42 U	43 U	0.44 U
Aroclor-1242 (PCB-1242)	mg/kg	0.84 U	0.052 U	42 U	43 U	0.44 U
Aroclor-1248 (PCB-1248)	mg/kg	9.2	0.2	210	160	4.1
Aroclor-1254 (PCB-1254)	mg/kg	0.84 U	0.052 U	42 U	43 U	0.44 U
Aroclor-1260 (PCB-1260)	mg/kg	0.95	0.047 J	42 U	43 U	0.49
Total PCBs	mg/kg	10.15	0.247 J	210	160	4.59

Notes:

U - Not present at or above the associated value.

J - Estimated concentration.

UJ - Estimated reporting limit.

TABLE 7.2

PARCEL 201 VALIDATED DELINEATION SAMPLE ANALYTICAL RESULTS SUMMARY
 GM POWERTRAIN BEDFORD FACILITY
 BEDFORD, INDIANA

Sample Area:	P201	P201	P201	P201	P201	P201
Sample Location:	BH-614	BH-614	BH-614	BH-614	BH-615	BH-615
Sample Date:	11/19/2007	11/19/2007	11/19/2007	11/19/2007	11/19/2007	11/19/2007
Sample ID:	S-201-111907-CH-31419	S-201-111907-CH-31420	S-201-111907-CH-31421	S-201-111907-CH-31422	S-201-111907-CH-31423	S-201-111907-CH-31424
Depth (ft):	(3-4)	(6-8)	(6-8) (Duplicate)	(16-16.5)	(0-2)	(6-8)
Parameters	Units					
PCBs						
Aroclor-1016 (PCB-1016)	mg/kg	0.04 U	0.041 U	0.042 U	0.041 U	0.041 U
Aroclor-1221 (PCB-1221)	mg/kg	0.04 U	0.041 U	0.042 U	0.041 U	0.041 U
Aroclor-1232 (PCB-1232)	mg/kg	0.04 U	0.041 U	0.042 U	0.041 U	0.041 U
Aroclor-1242 (PCB-1242)	mg/kg	0.04 U	0.041 U	0.042 U	0.041 U	0.041 U
Aroclor-1248 (PCB-1248)	mg/kg	0.04 U	0.041 U	0.042 U	0.041 U	1.3
Aroclor-1254 (PCB-1254)	mg/kg	0.04 U	0.041 U	0.042 U	0.041 U	0.041 U
Aroclor-1260 (PCB-1260)	mg/kg	0.04 U	0.041 U	0.042 U	0.041 U	0.12
Total PCBs	mg/kg	0	0	0	0	1.42

Notes:

U - Not present at or above the associated value.

J - Estimated concentration.

UJ - Estimated reporting limit.

TABLE 7.2

PARCEL 201 VALIDATED DELINEATION SAMPLE ANALYTICAL RESULTS SUMMARY
 GM POWERTRAIN BEDFORD FACILITY
 BEDFORD, INDIANA

<i>Sample Area:</i>	P201	P201	P201	P201	P201	P201
<i>Sample Location:</i>	BH-615	BH-616	BH-616	BH-616	BH-616	BH-617
<i>Sample Date:</i>	11/19/2007	11/19/2007	11/19/2007	11/19/2007	11/19/2007	11/19/2007
<i>Sample ID:</i>	S-201-111907-CH-31425	S-201-111907-CH-31426	S-201-111907-CH-31427	S-201-111907-CH-31428	S-201-111907-CH-31429	S-201-111907-CH-31430
<i>Depth (ft):</i>	(18.5-19)	(0-2)	(6-8)	(14-14.5)	(18.75-19)	(0-2)

<i>Parameters</i>	<i>Units</i>						
<i>PCBs</i>							
Aroclor-1016 (PCB-1016)	mg/kg	0.046 U	0.19 U	0.039 U	0.04 U	0.042 U	67 U
Aroclor-1221 (PCB-1221)	mg/kg	0.046 U	0.19 U	0.039 U	0.04 U	0.042 U	67 U
Aroclor-1232 (PCB-1232)	mg/kg	0.046 U	0.19 U	0.039 U	0.04 U	0.042 U	67 U
Aroclor-1242 (PCB-1242)	mg/kg	0.046 U	0.19 U	0.039 U	0.04 U	0.042 U	67 U
Aroclor-1248 (PCB-1248)	mg/kg	0.046 U	2.7	0.076	0.04 U	0.018 J	660
Aroclor-1254 (PCB-1254)	mg/kg	0.046 U	0.19 U	0.039 U	0.04 U	0.042 U	67 U
Aroclor-1260 (PCB-1260)	mg/kg	0.046 U	0.27	0.039 U	0.04 U	0.042 U	32 J
Total PCBs	mg/kg	0	2.97	0.076	0	0.018 J	692 J

Notes:
 U - Not present at or above the associated value.
 J - Estimated concentration.
 UJ - Estimated reporting limit.

TABLE 7.2

PARCEL 201 VALIDATED DELINEATION SAMPLE ANALYTICAL RESULTS SUMMARY
GM POWERTRAIN BEDFORD FACILITY
BEDFORD, INDIANA

Sample Area:	P201	P201	P201	P201	P201	P201
Sample Location:	BH-617	BH-617	BH-617	BH-617	BH-617	BH-618
Sample Date:	11/19/2007	11/19/2007	11/19/2007	11/19/2007	11/19/2007	11/19/2007
Sample ID:	S-201-111907-CH-31431	S-201-111907-CH-31432	S-201-111907-CH-31433	S-201-111907-CH-31434	S-201-111907-CH-31435	S-201-111907-CH-31436
Depth (ft):	(0-2) (Duplicate)	(6-8)	(10-11)	(14.5-14.6)	(20-21.5)	(0-2)
Parameters	Units					
PCBs						
Aroclor-1016 (PCB-1016)	mg/kg	71 U	0.2 U	0.42 U	0.042 U	7.8 U
Aroclor-1221 (PCB-1221)	mg/kg	71 U	0.2 U	0.42 U	0.042 U	7.8 U
Aroclor-1232 (PCB-1232)	mg/kg	71 U	0.2 U	0.42 U	0.042 U	7.8 U
Aroclor-1242 (PCB-1242)	mg/kg	71 U	0.2 U	0.42 U	0.042 U	7.8 U
Aroclor-1248 (PCB-1248)	mg/kg	1200	2.1	8.4	0.031 J	110
Aroclor-1254 (PCB-1254)	mg/kg	71 U	0.2 U	0.42 U	0.042 U	7.8 U
Aroclor-1260 (PCB-1260)	mg/kg	47 J	0.15 J	0.78	0.042 U	6.1 J
Total PCBs	mg/kg	1247 J	2.25 J	9.18	0.031 J	116.1 J

Notes:

U - Not present at or above the associated value.

J - Estimated concentration.

UJ - Estimated reporting limit.

TABLE 7.2

PARCEL 201 VALIDATED DELINEATION SAMPLE ANALYTICAL RESULTS SUMMARY
GM POWERTRAIN BEDFORD FACILITY
BEDFORD, INDIANA

Sample Area:	P201	P201	P201	P201	P201	P201	
Sample Location:	BH-618	BH-618	BH-618	BH-619	BH-619	BH-619	
Sample Date:	11/19/2007	11/19/2007	11/19/2007	11/20/2007	11/20/2007	11/20/2007	
Sample ID:	S-201-111907-CH-31437	S-201-111907-CH-31438	S-201-111907-CH-31439	S-201-112007-CH-31440	S-201-112007-CH-31441	S-201-112007-CH-31442	
Depth (ft):	(6-8)	(12-12.5)	(20-20.5)	(0-2)	(0-2) (Duplicate)	(6-8)	
Parameters	Units						
PCBs							
Aroclor-1016 (PCB-1016)	mg/kg	0.039 U	0.45 U	0.043 U	4.1 U	4.1 U	1.9 U
Aroclor-1221 (PCB-1221)	mg/kg	0.039 U	0.45 U	0.043 U	4.1 U	4.1 U	1.9 U
Aroclor-1232 (PCB-1232)	mg/kg	0.039 U	0.45 U	0.043 U	4.1 U	4.1 U	1.9 U
Aroclor-1242 (PCB-1242)	mg/kg	0.039 U	0.45 U	0.043 U	4.1 U	4.1 U	1.9 U
Aroclor-1248 (PCB-1248)	mg/kg	0.55	9.7	0.043 U	62	61	14
Aroclor-1254 (PCB-1254)	mg/kg	0.039 U	0.45 U	0.043 U	4.1 U	4.1 U	1.9 U
Aroclor-1260 (PCB-1260)	mg/kg	0.064	1.2	0.043 U	4.1	4 J	1.8 J
Total PCBs	mg/kg	0.614	10.9	0	66.1	65 J	15.8 J

Notes:

U - Not present at or above the associated value.

J - Estimated concentration.

UJ - Estimated reporting limit.

TABLE 7.2

PARCEL 201 VALIDATED DELINEATION SAMPLE ANALYTICAL RESULTS SUMMARY
GM POWERTRAIN BEDFORD FACILITY
BEDFORD, INDIANA

<i>Sample Area:</i>	P201	P201	P201	P201	P201	P201
<i>Sample Location:</i>	BH-619	BH-619	BH-619	BH-620	BH-620	BH-620
<i>Sample Date:</i>	11/20/2007	11/20/2007	11/20/2007	11/20/2007	11/20/2007	11/20/2007
<i>Sample ID:</i>	S-201-112007-CH-31443	S-201-112007-CH-31444	S-201-112007-CH-31445	S-201-112007-CH-31446	S-201-112007-CH-31447	S-201-112007-CH-31448
<i>Depth (ft):</i>	(10-12)	(12-14)	(18-19)	(0-2)	(6-8)	(8-12)

<i>Parameters</i>	<i>Units</i>						
<i>PCBs</i>							
Aroclor-1016 (PCB-1016)	mg/kg	2 U	0.04 U	0.042 U	0.04 U	0.041 U	0.04 U
Aroclor-1221 (PCB-1221)	mg/kg	2 U	0.04 U	0.042 U	0.04 U	0.041 U	0.04 U
Aroclor-1232 (PCB-1232)	mg/kg	2 U	0.04 U	0.042 U	0.04 U	0.041 U	0.04 U
Aroclor-1242 (PCB-1242)	mg/kg	74	0.04 U	0.042 U	0.04 U	0.041 U	0.04 U
Aroclor-1248 (PCB-1248)	mg/kg	2 U	1.1	0.042 U	0.59	0.0088 J	0.061
Aroclor-1254 (PCB-1254)	mg/kg	2 U	0.04 U	0.042 U	0.04 U	0.041 U	0.04 U
Aroclor-1260 (PCB-1260)	mg/kg	1.5 J	0.11	0.042 U	0.13	0.041 U	0.013 J
Total PCBs	mg/kg	75.5 J	1.21	0	0.72	0.0088 J	0.074 J

Notes:
 U - Not present at or above the associated value.
 J - Estimated concentration.
 UJ - Estimated reporting limit.

TABLE 7.2

PARCEL 201 VALIDATED DELINEATION SAMPLE ANALYTICAL RESULTS SUMMARY
 GM POWERTRAIN BEDFORD FACILITY
 BEDFORD, INDIANA

Sample Area:	P201	P201	P201	P201	P201	P201
Sample Location:	BH-620	BH-621	BH-621	BH-621	BH-621	BH-621
Sample Date:	11/20/2007	11/20/2007	11/20/2007	11/20/2007	11/20/2007	11/20/2007
Sample ID:	S-201-112007-CH-31449	S-201-112007-CH-31450	S-201-112007-CH-31451	S-201-112007-CH-31452	S-201-112007-CH-31453	S-201-112007-CH-31454
Depth (ft):	(18-19)	(0-2)	(0-2) (Duplicate)	(6-8)	(14-16)	(16-18)

Parameters	Units						
PCBs							
Aroclor-1016 (PCB-1016)	mg/kg	0.045 U	7.8 U	8 U	0.37 U	0.25 U	0.044 U
Aroclor-1221 (PCB-1221)	mg/kg	0.045 U	7.8 U	8 U	0.37 U	0.25 U	0.044 U
Aroclor-1232 (PCB-1232)	mg/kg	0.045 U	7.8 U	8 U	0.37 U	0.25 U	0.044 U
Aroclor-1242 (PCB-1242)	mg/kg	0.045 U	7.8 U	8 U	0.37 U	2.3	0.73
Aroclor-1248 (PCB-1248)	mg/kg	0.045 U	240	160	2.9	0.25 U	0.044 U
Aroclor-1254 (PCB-1254)	mg/kg	0.045 U	7.8 U	8 U	0.37 U	0.25 U	0.044 U
Aroclor-1260 (PCB-1260)	mg/kg	0.045 U	11	10	0.48	0.16 J	0.066
Total PCBs	mg/kg	0	251	170	3.38	2.46 J	0.796

Notes:
 U - Not present at or above the associated value.
 J - Estimated concentration.
 UJ - Estimated reporting limit.

TABLE 7.2

PARCEL 201 VALIDATED DELINEATION SAMPLE ANALYTICAL RESULTS SUMMARY
 GM POWERTRAIN BEDFORD FACILITY
 BEDFORD, INDIANA

<i>Sample Area:</i>	P201	P201	P201	P201	P201	P201
<i>Sample Location:</i>	BH-621	BH-622	BH-622	BH-622	BH-622	BH-623
<i>Sample Date:</i>	11/20/2007	11/20/2007	11/20/2007	11/20/2007	11/20/2007	11/20/2007
<i>Sample ID:</i>	S-201-112007-CH-31455	S-201-112007-CH-31456	S-201-112007-CH-31457	S-201-112007-CH-31458	S-201-112007-CH-31459	S-201-112007-CH-31460
<i>Depth (ft):</i>	(20-21)	(0-2)	(4-8)	(16-18)	(21-22.5)	(0-2)

<i>Parameters</i>	<i>Units</i>						
<i>PCBs</i>							
Aroclor-1016 (PCB-1016)	mg/kg	0.037 U	0.38 U	0.037 U	0.042 U	0.042 U	0.038 U
Aroclor-1221 (PCB-1221)	mg/kg	0.037 U	0.38 U	0.037 U	0.042 U	0.042 U	0.038 U
Aroclor-1232 (PCB-1232)	mg/kg	0.037 U	0.38 U	0.037 U	0.042 U	0.042 U	0.038 U
Aroclor-1242 (PCB-1242)	mg/kg	0.052	0.38 U	0.037 U	0.042 U	0.042 U	0.038 U
Aroclor-1248 (PCB-1248)	mg/kg	0.037 U	4.2	0.014 J	0.014 J	0.02 J	0.033 J
Aroclor-1254 (PCB-1254)	mg/kg	0.037 U	0.38 U	0.037 U	0.042 U	0.042 U	0.038 U
Aroclor-1260 (PCB-1260)	mg/kg	0.013 J	0.43	0.037 U	0.042 U	0.042 U	0.038 U
Total PCBs	mg/kg	0.065 J	4.63	0.014 J	0.014 J	0.02 J	0.033 J

Notes:
 U - Not present at or above the associated value.
 J - Estimated concentration.
 UJ - Estimated reporting limit.

TABLE 7.2

PARCEL 201 VALIDATED DELINEATION SAMPLE ANALYTICAL RESULTS SUMMARY
GM POWERTRAIN BEDFORD FACILITY
BEDFORD, INDIANA

<i>Sample Area:</i>	P201	P201	P201	P201
<i>Sample Location:</i>	BH-623	BH-623	BH-623	BH-623
<i>Sample Date:</i>	11/20/2007	11/20/2007	11/20/2007	11/20/2007
<i>Sample ID:</i>	S-201-112007-CH-31461	S-201-112007-CH-31462	S-201-112007-CH-31463	S-201-112007-CH-31464
<i>Depth (ft):</i>	(0-2) (Duplicate)	(6-8)	(8-10.5)	(21.75-22.5)

<i>Parameters</i>	<i>Units</i>				
<i>PCBs</i>					
Aroclor-1016 (PCB-1016)	mg/kg	0.039 U	0.035 U	0.042 U	0.043 U
Aroclor-1221 (PCB-1221)	mg/kg	0.039 U	0.035 U	0.042 U	0.043 U
Aroclor-1232 (PCB-1232)	mg/kg	0.039 U	0.035 U	0.042 U	0.043 U
Aroclor-1242 (PCB-1242)	mg/kg	0.039 U	0.035 U	0.042 U	0.043 U
Aroclor-1248 (PCB-1248)	mg/kg	0.038 J	0.073	0.084 J	0.043 U
Aroclor-1254 (PCB-1254)	mg/kg	0.039 U	0.035 U	0.042 U	0.043 U
Aroclor-1260 (PCB-1260)	mg/kg	0.039 U	0.064	0.02 J	0.043 U
Total PCBs	mg/kg	0.038 J	0.137	0.104 J	0

Notes:

U - Not present at or above the associated value.

J - Estimated concentration.

UJ - Estimated reporting limit.