



GM CETC BEDFORD FACILITY BEDFORD, INDIANA

RCRA CORRECTIVE ACTION/CERCLA REMOVAL ACTION

G M C E T C B E D F O R D F A C I L I T Y , B E D F O R D , I N D I A N A

Welcome to the 1st Quarter 2011 Public Information Session March 10, 2011



- Facility located on 152.5 acres and is approximately 1,000,000 square feet of manufacturing footprint
- Approximately 400 employees



- Comprehensive Environmental Response, Compensation, and Liability Act (CERCLA) Removal Action (RA)
 - Bailey's Branch and Pleasant Run PCB cleanup of creek sediments and floodplain soil.
 - RA Elements:
 - Control of impacted springs and seeps along creeks; and
 - Removal of floodplain soil to 1.8 ppm and sediment to 1 ppm in the creek.
 - GM will consolidate remaining creek soil removal work with East Plant capping as part of an agreement previously reached with MLC.
 - Balance of soil removal will be completed this year.
 - Remedy for large spring on Baileys Branch to be implemented this year.
 - Restoration will continue into 2012.



RCRA CORRECTIVE ACTION/CERCLA REMOVAL ACTION

GM CETC BEDFORD FACILITY, BEDFORD, INDIANA

REMAINING
EXCAVATION

RESTORATION
EAST OF
PEERLESS ROAD

PARCEL 40

RESTORATION
NORTH OF
BROOMSAGE ROAD

PARCEL 400
INVESTIGATION
AREA

WEST PLANT AREA

Vault

COMPLETED COVER
SYSTEM

SEEP AND SPRING
WORK AREA

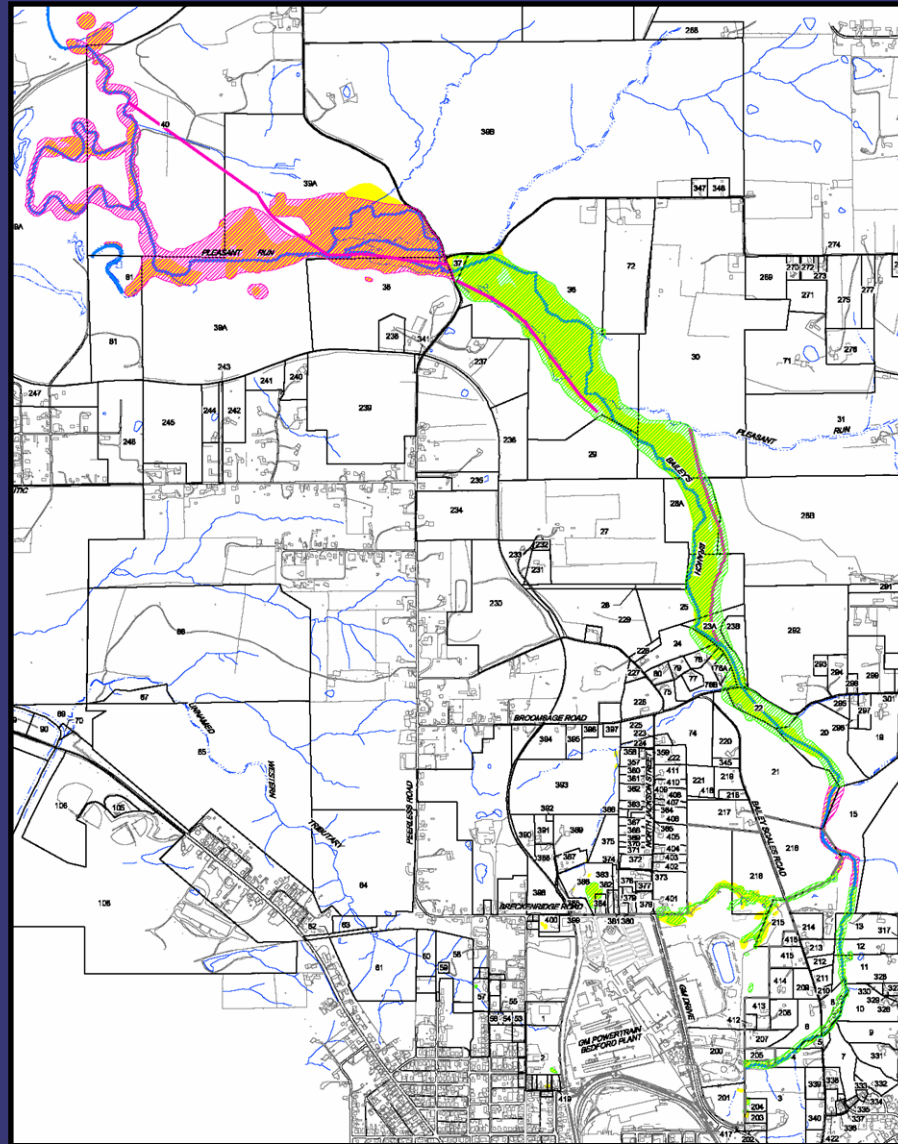




REMOVAL ACTION STATUS

RCRA CORRECTIVE ACTION/CERCLA REMOVAL ACTION

GM CETC BEDFORD FACILITY, BEDFORD, INDIANA





CREEK RESTORATION

RCRA CORRECTIVE ACTION/CERCLA REMOVAL ACTION

GM CETC BEDFORD FACILITY, BEDFORD, INDIANA



South of Broomsage Road Restoration



CREEK RESTORATION

RCRA CORRECTIVE ACTION/CERCLA REMOVAL ACTION

GM CETC BEDFORD FACILITY, BEDFORD, INDIANA



Restoration North of Broomsage Road



CREEK RESTORATION STATUS

RCRA CORRECTIVE ACTION/CERCLA REMOVAL ACTION

GM CETC BEDFORD FACILITY, BEDFORD, INDIANA



Restoration east of Peerless Road



CREEK RESTORATION

RCRA CORRECTIVE ACTION/CERCLA REMOVAL ACTION

G M C E T C B E D F O R D F A C I L I T Y , B E D F O R D , I N D I A N A



Restoration East of Peerless Road



CREEK EXCAVATION STATUS

RCRA CORRECTIVE ACTION/CERCLA REMOVAL ACTION

GM CETC BEDFORD FACILITY, BEDFORD, INDIANA



Excavation remaining west of Peerless Road



CREEK EXCAVATION STATUS

RCRA CORRECTIVE ACTION/CERCLA REMOVAL ACTION

G M C E T C B E D F O R D F A C I L I T Y , B E D F O R D , I N D I A N A

No Excavation

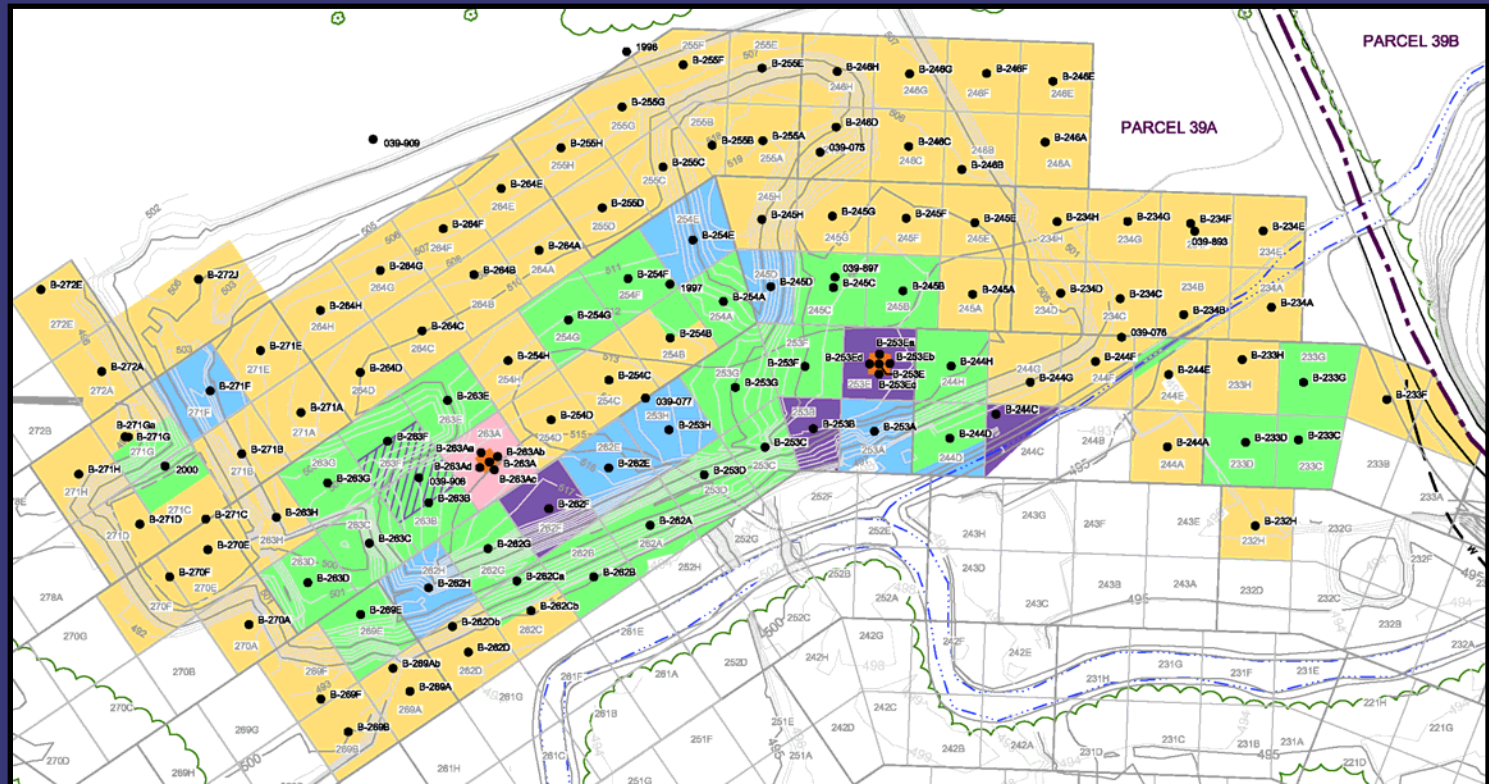
0.5 ft

1 ft

1.5 ft

2 ft

>50



Additional soil removal to be completed at Area 'G' spring/summer 2011



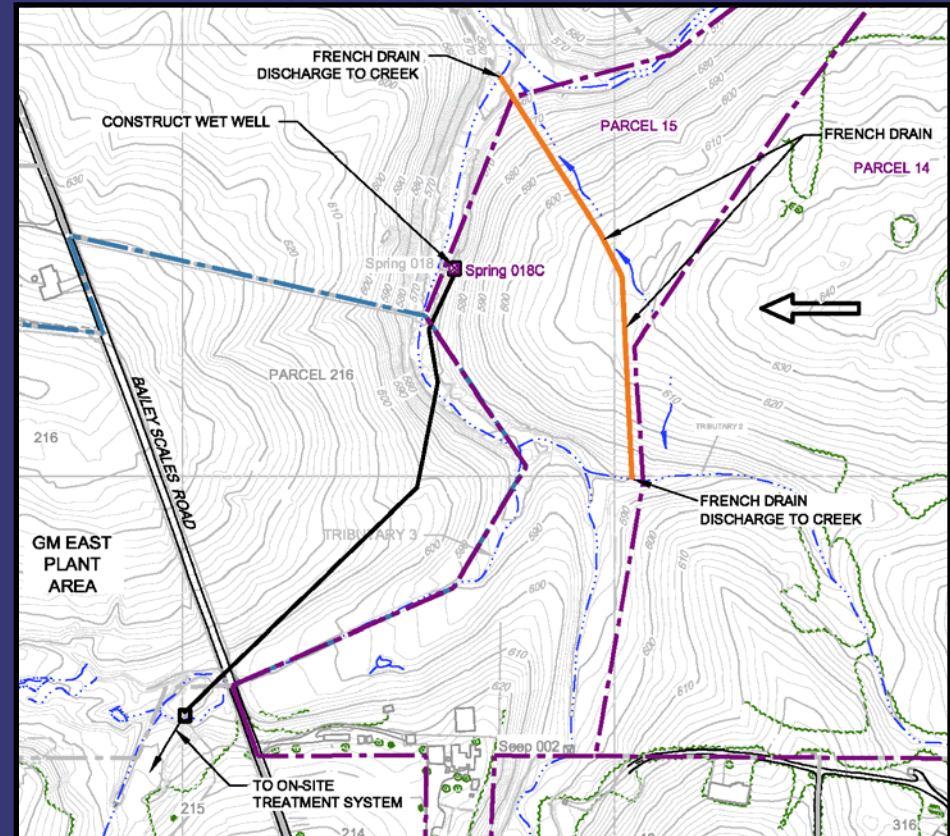
SPRING 018

RCRA CORRECTIVE ACTION/CERCLA REMOVAL ACTION

GM CETC BEDFORD FACILITY, BEDFORD, INDIANA



- Construct French-drain east of Spring 018
- Clean groundwater collected in the French-drain will be diverted around Spring 018 and discharge into the creek upstream and downstream of the Spring
- After rerouting of clean water, the reduced volume of water discharged at Spring 018 will continue to be collected and treated at one of the on-Site water treatment plants
- Currently in design phase, construction scheduled for 2011



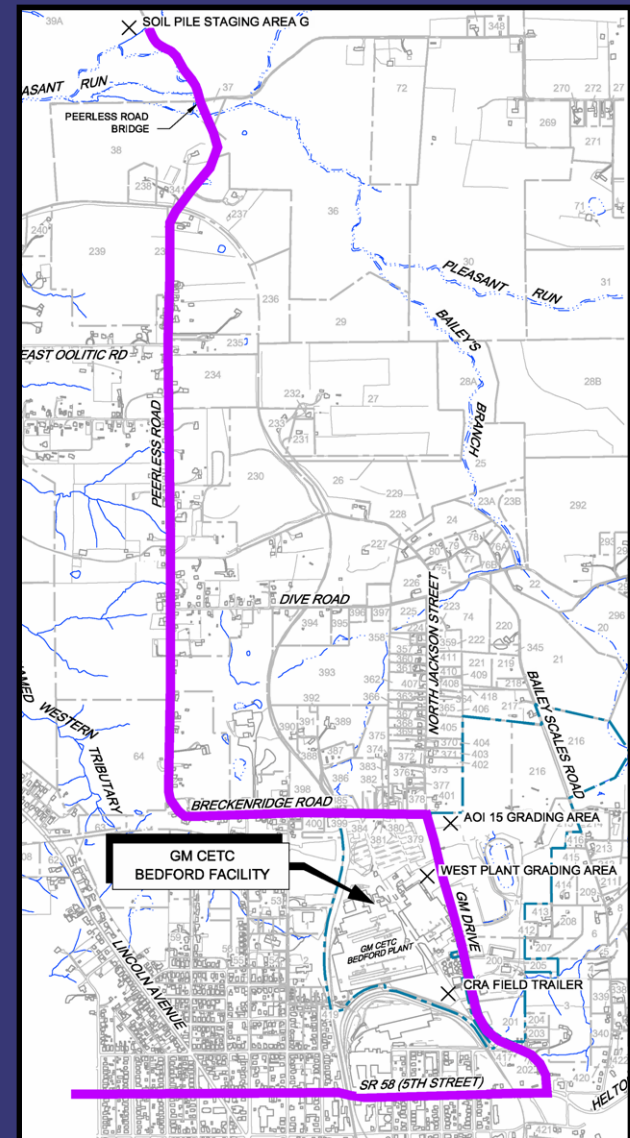


TRUCK TRAFFIC ROUTES

RCRA CORRECTIVE ACTION/CERCLA REMOVAL ACTION

GM CETC BEDFORD FACILITY, BEDFORD, INDIANA

- Road traffic has been suspended through the winter and early spring 2011.
- Traffic will resume after the spring rainy season when removal activities resume at the former Staging Area 'G'.
- CRA monitors safety of truckers.
- Once project truck traffic has ended, GM will place a final surface layer on the portions of Peerless and Breckenridge Roads paved in early 2010.
- GM will continue to monitor the need for patching roads once project truck traffic resumes in 2011.
- Truck Traffic Issues:
Katie Kamm - (812) 277-8954





- RCRA Corrective Action

- Conducted in accordance with a performance-based agreement with the U.S. EPA Region V. The agreement was signed on March 20, 2001 and amended October 1, 2002, March 29, 2008, and May 9, 2008.
- Groundwater testing completed in July/August 2010.
- Next testing to be completed March 2011.
- Bedrock studies will be completed at AOI 8 this spring to facilitate the collection system design.
- Implementing Interim Measures:
 - East Plant Area
 - West Plant Area
 - Commercial properties west of the Facility



EAST PLANT AREA

RCRA CORRECTIVE ACTION/CERCLA REMOVAL ACTION


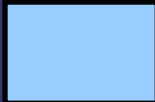

GM CETC BEDFORD FACILITY, BEDFORD, INDIANA

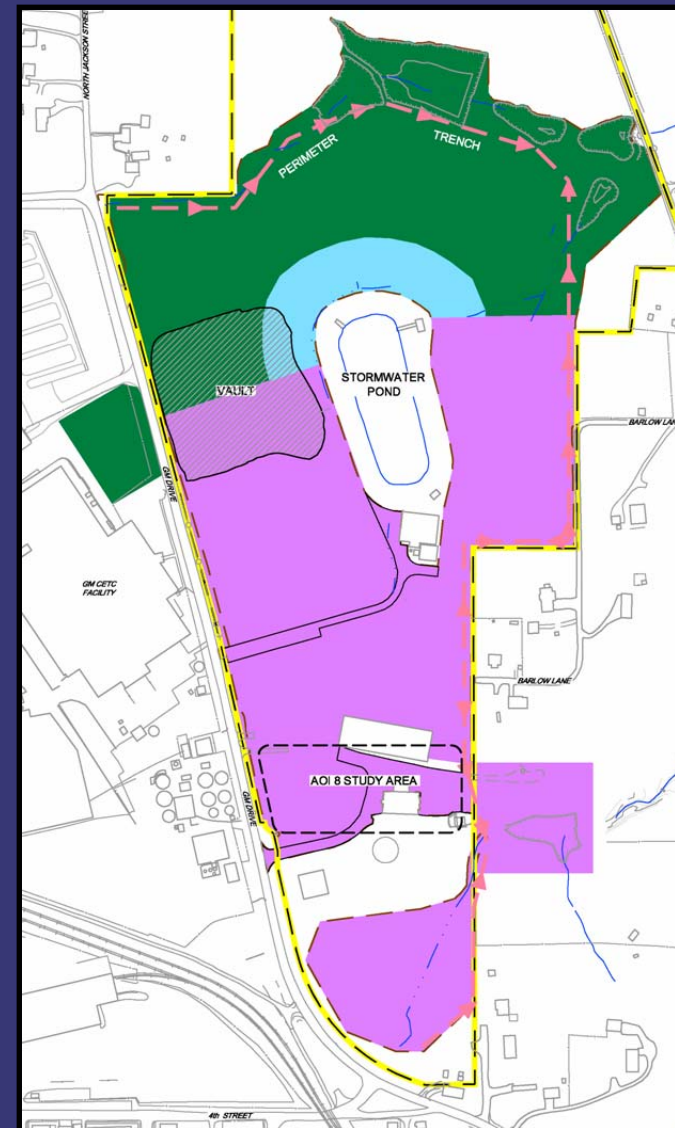




East Plant Area Interim Measure

- Re-use of creek soil
- Select soil removal/landfill vault
- Cover system
- Perimeter groundwater collection system
- AOI 8 collection system
- Long-term maintenance and monitoring

-  Substantially complete cap areas
-  Partially complete cap areas
-  Planned capping for 2011





EAST PLANT AREA

RCRA CORRECTIVE ACTION/CERCLA REMOVAL ACTION

GM CETC BEDFORD FACILITY, BEDFORD, INDIANA



Partially completed cover work around the storm water pond.



EAST PLANT AREA

RCRA CORRECTIVE ACTION/CERCLA REMOVAL ACTION

GM CETC BEDFORD FACILITY, BEDFORD, INDIANA



Mix of completed, partially complete, and temporary liners around the stormwater pond.



EAST PLANT AREA

RCRA CORRECTIVE ACTION/CERCLA REMOVAL ACTION

G M C E T C B E D F O R D F A C I L I T Y , B E D F O R D , I N D I A N A



Grading area to be completed 2011 north of the storm water pond.



Cover System installation 2011:

- Overseeding of problem vegetation areas completed last fall – should see good grass growth this spring on completed areas.
- Cover construction will be completed in 2011.



WEST PLANT AREA

RCRA CORRECTIVE ACTION/CERCLA REMOVAL ACTION

GM CETC BEDFORD FACILITY, BEDFORD, INDIANA

- The former excavation in front of the plant will have a permanent vegetative and asphalt cover placed over the former excavation.



- West Plant cover work will be completed in 2011 starting in spring or early summer.



PARCELS 400/430/431

RCRA CORRECTIVE ACTION/CERCLA REMOVAL ACTION

GM CETC BEDFORD FACILITY, BEDFORD, INDIANA



- Delineation at former fill areas west of Plant completed this winter and remediation options reviewed with the property owners in March. An Interim Measure will be submitted to U.S. EPA and IDEM.



UPCOMING ACTIVITIES

RCRA CORRECTIVE ACTION/CERCLA REMOVAL ACTION

G M C E T C B E D F O R D F A C I L I T Y , B E D F O R D , I N D I A N A

UPCOMING ACTIVITIES FOR 2011

- Complete additional bedrock studies at AOI 8.
- Complete IM Work Plan for properties west of the Plant.
- Complete soil removal at Area G, west of Peerless Road
- Complete East Plant Area and West Plant Area Cover Systems
- Complete restoration east of Peerless Road
- Complete design and installation of Spring 018 remedy
- Continue RFI groundwater monitoring



COMMUNITY RELATIONS ACTIVITIES

RCRA CORRECTIVE ACTION/CERCLA REMOVAL ACTION

G M C E T C B E D F O R D F A C I L I T Y , B E D F O R D , I N D I A N A

- Community meetings are held on a quarterly basis.
 - Presentations have been and will continue to be posted to the website
 - People can always come to the field trailer and talk one-on-one or call Katie Kamm: (812) 277-8954
- Next meetings will be held in June 2011
- A CLP Meeting was held today, next CLP to be held in June



COMMUNITY RELATIONS ACTIVITIES

RCRA CORRECTIVE ACTION/CERCLA REMOVAL ACTION

G M C E T C B E D F O R D F A C I L I T Y , B E D F O R D , I N D I A N A

- Project website at:
<http://www.BedfordPowertrainCorrectiveAction.com>
- Quarterly Community Meetings are available on the website
- Public Information Repository (GM Plant) currently by appointment with Katie and repository publications are also available on the project website
- Community Liaison Panel (CLP) – members listed in minutes on website
- Periodic information sessions
- Periodic Project Fact Sheets (thirty-one issued to date)
- Project Questions or Truck Traffic Issues contact Katie Kamm:
(812) 277-8954