



BEDFORD PLANT CORRECTIVE ACTION

G M G P S B E D F O R D F A C I L I T Y , B E D F O R D , I N D I A N A

Public Information Session July 18, 2018



- Facility located on 152.5 acres and is approximately 1,000,000 square feet of manufacturing footprint
- Approximately 830 employees

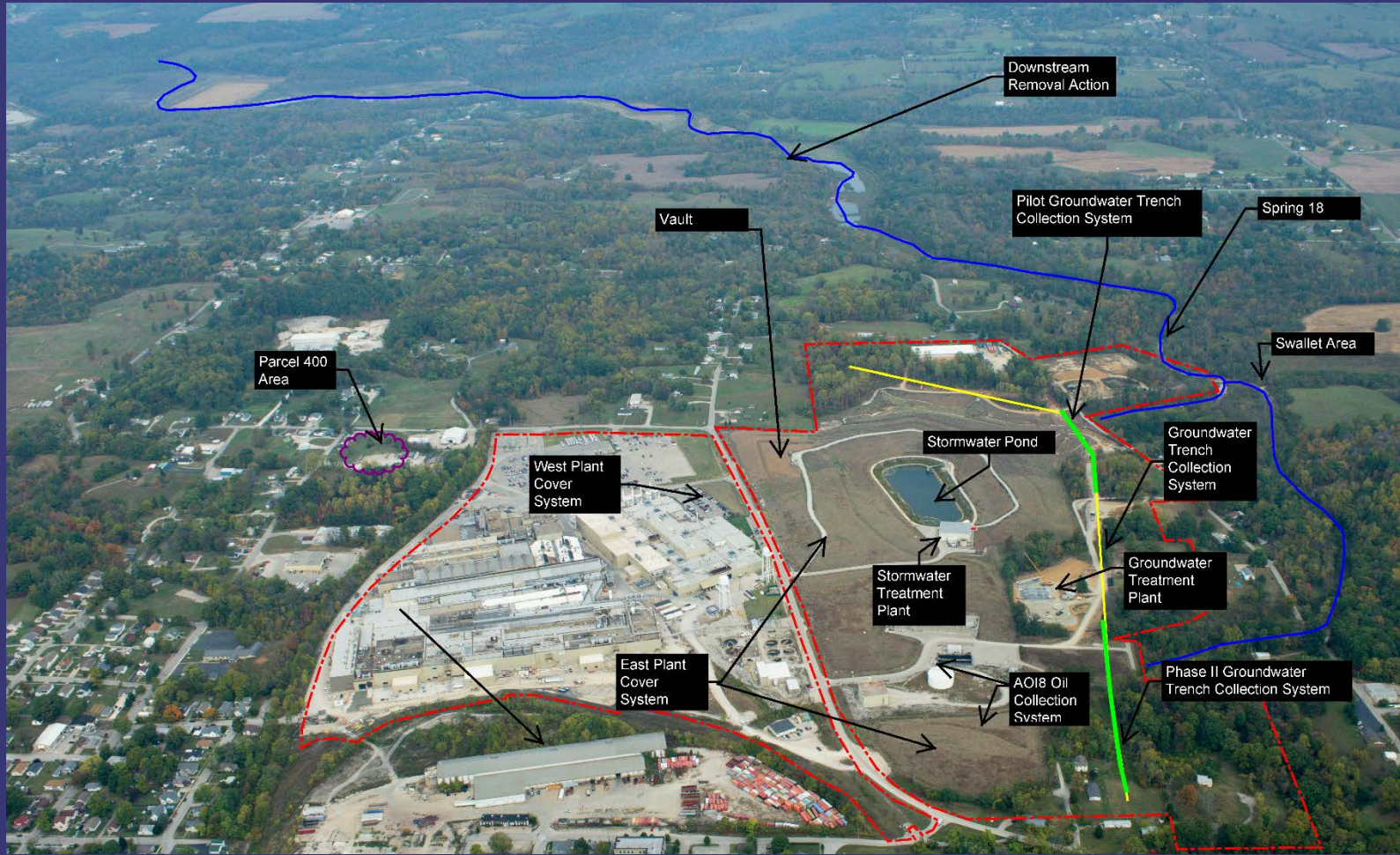


- Comprehensive Environmental Response, Compensation, and Liability Act (CERCLA) Removal Action (RA)
 - Bailey's Branch and Pleasant Run PCB cleanup of creek sediments and floodplain soil
 - RA Elements:
 - Control of impacted springs and seeps along creek
 - Removal of floodplain soil to 1.8 ppm and sediment to 1 ppm in the creek (removal is complete)
 - Monitoring continues for large spring on Baileys Branch Creek
 - Creek and floodplain restoration was completed in August 2014
- RCRA Corrective Action
 - GM LLC and USEPA entered into an AOC for those areas which GM LLC is responsible.



GM BEDFORD REMEDIATION PROJECT

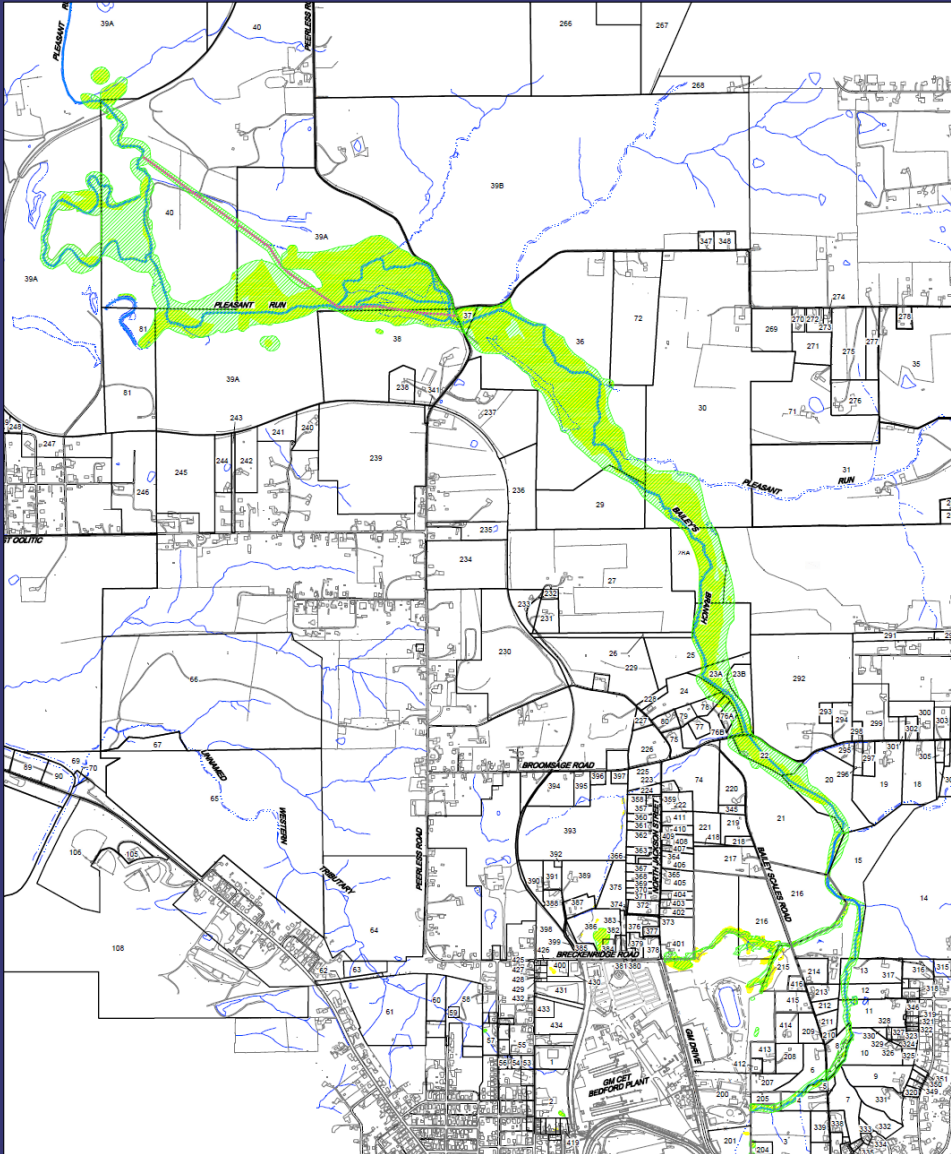
G M G P S B E D F O R D F A C I L I T Y , B E D F O R D , I N D I A N A





REMOVAL ACTION STATUS

G M G P S B E D F O R D F A C I L I T Y , B E D F O R D , I N D I A N A





CREEK RESTORATION

G M G P S B E D F O R D F A C I L I T Y , B E D F O R D , I N D I A N A





CREEK RESTORATION

G M G P S B E D F O R D F A C I L I T Y , B E D F O R D , I N D I A N A

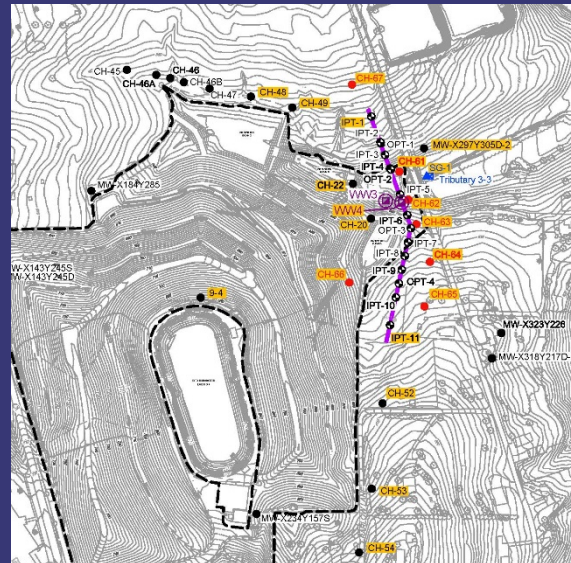




ON-SITE PILOT TRENCH MONITORING

G M G P S B E D F O R D F A C I L I T Y , B E D F O R D , I N D I A N A

- On-Site pilot perimeter groundwater trench collection system construction was completed in August 2016 and has been operating since that time.
- Installed transducers in select wells to monitor water elevations.
- Additional monitoring wells will be installed to augment current monitoring network to monitor the flow pattern of the shallow groundwater flow system.
- A dye trace study will be conducted to show a conservative groundwater pathway.





PERIMETER FENCE

G M G P S B E D F O R D F A C I L I T Y , B E D F O R D , I N D I A N A

- Installation of the perimeter fence along GM Drive was completed in January 2018.
- Tree clearing along the balance of the perimeter fence has been completed.
- Fence will follow the limits of the northern trench alignment to the north and the industrial property line (GM owns property in this area) to the east.
- Balance of the perimeter fence installation expected to begin in late July, starting at the south end of the property.





COVER SYSTEM MONITORING AND MAINTENANCE

G M G P S B E D F O R D F A C I L I T Y , B E D F O R D , I N D I A N A

- GM conducts inspections of the cover system. USEPA approved request to reduce cover inspections from quarterly to semi-annually.
- Cover system repairs are made, as needed.
- Remediation continues to support GM Bedford GPS Wildlife Habitat Council re-certification.



- GWTP treats groundwater from the perimeter trench, site source control wet wells, and vault sumps.
- Treated water discharges are monitored through a NPDES permit managed by GM Remediation.

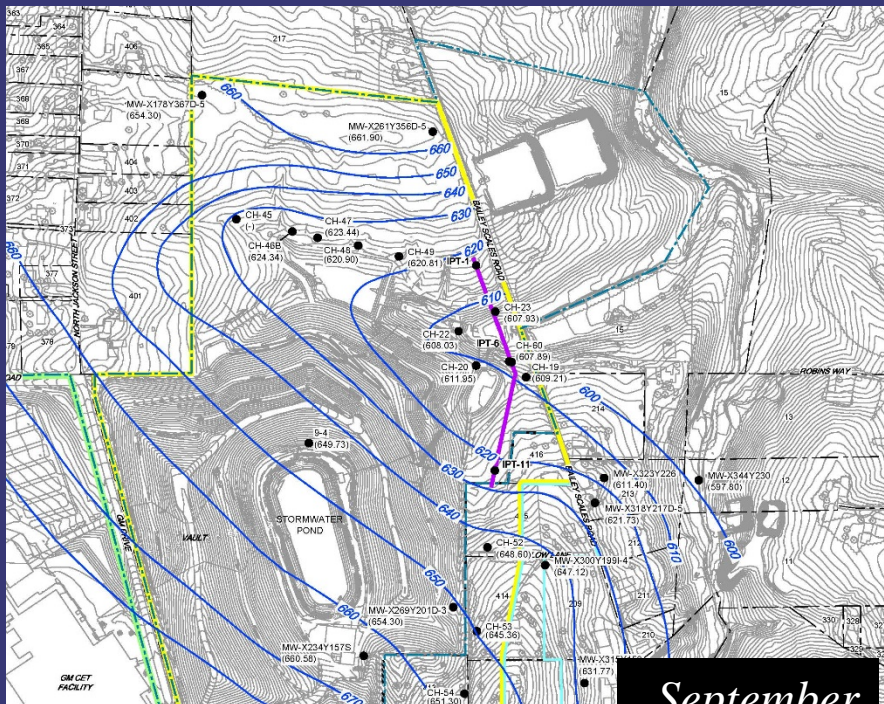




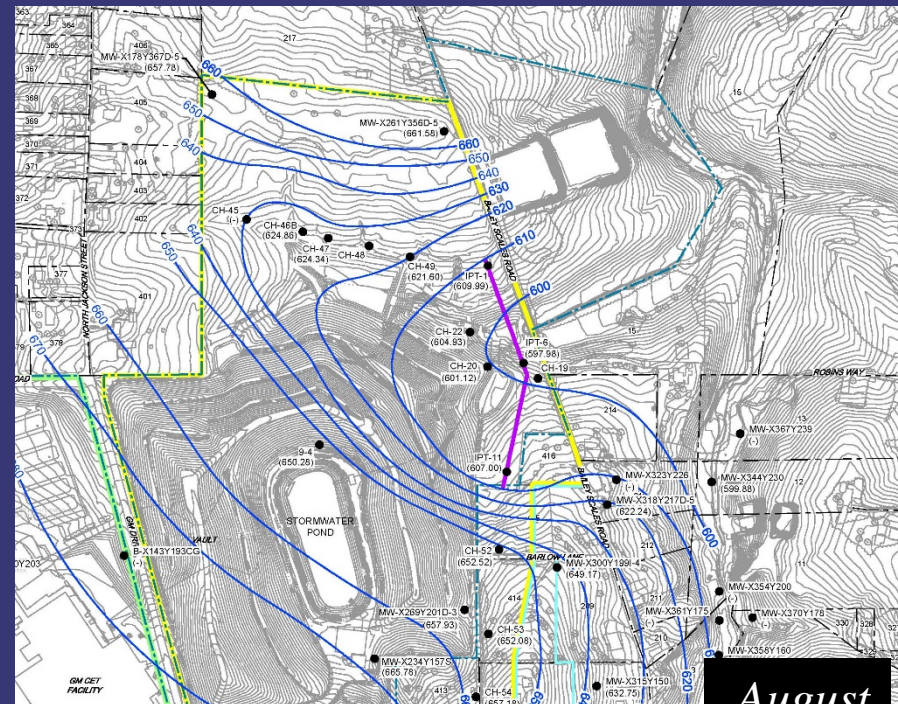
EI CA750 GROUNDWATER MONITORING

G M G P S B E D F O R D F A C I L I T Y , B E D F O R D , I N D I A N A

- Quarterly groundwater level measurements collected.
- Groundwater sampling event conducted in December 2017 and May 2018 .
- Groundwater data shows capture at the pilot perimeter collection trench.



September
2015



August
2017



AOI 8 OIL COLLECTION SYSTEM

G M G P S B E D F O R D F A C I L I T Y , B E D F O R D , I N D I A N A

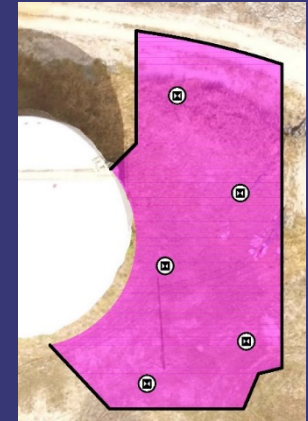
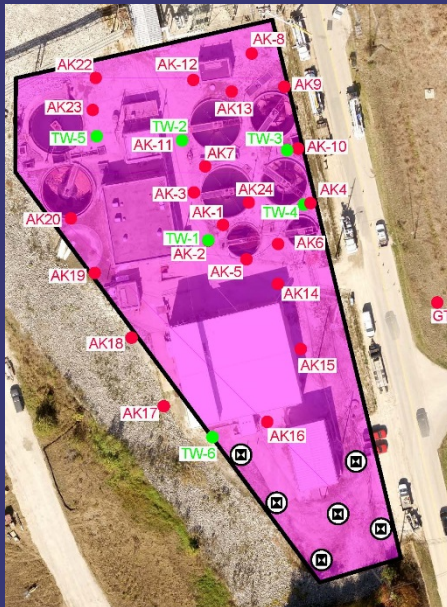
- Active system uses solar power to collect oil and pump it to an above ground container housed in an adjacent building.
- Passive oil recovery adsorbent socks where active oil recovery is infeasible.
- Waste profile is being established. Oil collection and disposal will begin once profile has been accepted by disposal facility.
- Re-designing access road to the solar sipper building to improve safety.



- GM continues to collect samples from Spring 18 and analyze for PCBs.
- Over one year of sample data shows no detectable PCB concentrations (reporting limit – 0.19 ug/L; Spring 18 action level - 0.3 ug/L).
- U.S.EPA agreed to reduced monitoring in 2018.



- Initial sampling targeted areas, not covered by East/West Plant Cover System, not currently paved with hard surface maintained by GM GPS, and areas more prone to potential worker exposures.
- Additional sampling to be done in the two pink-shaded areas.
- Work to be initiated following IWTP upgrades to minimize safety risks having multiple contractors working in a tight area.



- Additional wells are proposed to support an assessment of potential current and future risks to human health and the environment.
- Work to be initiated following IWTP upgrades to minimize safety risks having multiple contractors working in a tight area.





- Community meetings have been held on a regular basis, currently meeting twice/year
 - Meetings will continue to be announced in the Bedford Times Mail
 - Presentations have been and will continue to be posted to the website and the library
 - People can always call Katie Kamm with questions:
(812) 277-8954
- The last public meeting was held in December 2017.
- The Community Liaison Panel and public meetings have been combined as project activities are winding down or transitioning into operation of water collection and treatment, and monitoring and maintenance of remedial systems.
- Information from the presentations are posted to the website



G M G P S B E D F O R D F A C I L I T Y , B E D F O R D , I N D I A N A

- Project website at:
<http://www.BedfordPowertrainCorrectiveAction.com>
- Community Meetings are available on the website
- Final approved documents can be found on the project website
- Periodic information sessions – next meeting likely to be held
December 2018.
- Periodic Project Fact Sheets
- Project Questions contact Katie Kamm: (812) 277-8954