



This is the twenty-ninth Project Fact Sheet that has been prepared to provide the community with information regarding activities being performed at the Site.

Project Field Fact

Following restoration, there have been at least five additional fish species observed in the creek system than found prior to the cleanup. In total, thirteen species of fish, including blue gill, orangethroat darter, and creek chub, were identified in the October 2007 inspection following completion of the cleanup activities.

Project Background

A RCRA Corrective Action is being conducted at the GM Powertrain Bedford Facility, in accordance with the terms of the Performance-Based Corrective Action Agreement (Agreement) executed by United States Environmental Protection Agency (U.S. EPA) on March 20, 2001, and modified on October 1, 2002, March 29, 2007, and May 9, 2008. Some of the activities conducted as part of the overall RCRA CA are being addressed under the Comprehensive Environmental Response, Compensation, and Liability Act (CERCLA) Removal Action (RA) Program pursuant to an Administrative Order on Consent (AOC), effective July 31, 2003.

Facility Update

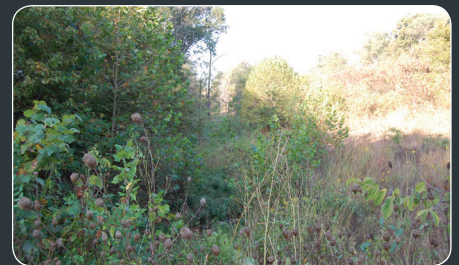
Cleanup on and around the Facility continues. Within the East Plant Area, seasonal construction of the low permeability cover system will soon be wrapping up for the year due to falling temperatures. Areas of the completed final cover system can be seen in areas now seeded with grass. Temporary liners continue to cover areas where work has not yet resumed in order to prevent erosion until the final cover system can be completed. The final cover system in the East Plant Area is anticipated to be completed in 2012. Surface water and groundwater that has the potential to come in contact with contaminated soil continues to be collected and treated in the East Plant Area.



LOOKING NORTHEAST AT THE STORM WATER MANAGEMENT POND.



COVER SYSTEM CONSTRUCTION NEARING COMPLETION ALONG GM DRIVE.



RESTORATION FACING WEST FROM BAILEY SCALES ROAD.



EAST PLANT AREA RECEIVING GRADING MATERIAL FROM STOCKPILE WEST OF PEERLESS ROAD.



SOIL PILE REMOVAL ACTIVITIES WEST OF PEERLESS ROAD.



RESTORATION FACING NORTH FROM BROOMSAGE ROAD.

Off-Site Activities Update

An Agreement between GM LLC and Motors Liquidation Company (MLC), to cooperatively conduct the remaining excavation work under the AOC, was completed in August 2010. This remaining excavation work includes the tarped stockpile located near the intersection of Peerless and Bud Ikerd Roads, and underlying soil. This soil will be transported to the East Plant Area for placement under the low permeability cover. While the stockpile removal will be completed this year, removal of soils that remain under the stockpile pad will resume in 2011 after the winter and spring rainy seasons.

A larger spring emanating water with low level PCBs, located east of the Plant property on Bailey's Branch Creek, remains controlled by a collection and treatment system as remedy design continues. Sampling frequency of this spring has been reduced from monthly to quarterly due to consistent results for a number of years.

Remaining restoration activities include final grading and planting activities at the Bailey's Branch confluence with Pleasant Run and the Peerless Road Bridge, and some additional restoration work further upstream. Restoration of the area downstream of the Peerless Road Bridge will occur in the next few years once excavation activities are complete.

Roads Update

Due to resumption of excavation activities in the downstream areas, soil transportation trucking activities have resumed from the soil stockpile located along Peerless Road to the East Plant Area. Traffic related to this work is nearly complete for the season. However, restoration work planned for this fall near Peerless Road will result in truck traffic hauling clean soil-fill and top-soil along the same route. Truck traffic will decline for the season as excavation and restoration activities taper off during the winter and early spring months.

GM continues to monitor the road surfaces on all haul roads and will make any repairs as needed throughout the remainder of the project. The safety of truckers will also continue to be monitored as long as hauling operations are being conducted. At the end of the substantial trucking activities, GM will be placing a final surface layer on portions of road that were recently repaved.

Communications Update

A public meeting was held on June 17, 2010, at the field trailers south of the GM Powertrain Bedford Facility. The presentation for this meeting is posted on the GM website at www.BedfordPowertrainCorrectiveAction.com. The next neighborhood and public meeting is scheduled for September 30, 2010 and will be held at the same location.

The Community Liaison Panel (CLP) met for the second quarter meeting of the year (Meeting No. 38) on June 18, 2010, as an additional communication avenue for the community. CLP meeting minutes from the previous meeting have been posted to the project website. The next CLP meeting will be held on October 1, 2010.

A Road Information Session was held with the public on August 12, 2010 at the field trailers south of the GM Powertrain Bedford Facility to provide an update and discuss truck traffic and road maintenance along the trucking routes.

An information repository is maintained in the Bedford Plant lobby and is available for public review by appointment. A list of new project documents, submitted to the repository since Fact Sheet 28, is provided on this Fact Sheet, below.

Upcoming Activities Summary

The following is a list of anticipated work to be initiated or completed at the Site and property located off-Site over the next few months:

- Continue final cover system construction on the East Plant Area, working generally from the south to the north.
- Complete construction of the vegetative/asphalt cover, on an area west of GM Drive in front of the Plant.
- Continue to maintain temporary liner covers and runoff water collection and treatment where necessary until the cover system can be completed.
- Conduct additional bedrock and groundwater studies this fall in the East Plant Area with the assistance of a drill-rig.
- Continue to collect and treat water from a large spring, which contains low levels of PCBs.
- Prepare a work plan and complete the fieldwork to further reduce the amount of upstream water collecting in the large spring by rerouting clean water from other area away from the spring.
- Complete restoration of areas east of Peerless Road.



RESTORATION EAST OF PEERLESS ROAD.



EXCAVATION WEST OF PEERLESS ROAD.

Documents

The following documents have been submitted to the U.S. EPA and IDEM since Fact Sheet 28 and if finalized, documents are available for review in the public repository.

- Quarterly Progress Report 37
- July/August CERCLA Progress Reports
- Public Presentation
June 17, 2010

Public Access Website at...

www.BedfordPowertrainCorrectiveAction.com
Get up-to-date project information
and view project related documents.

Contact Information

If you would like more information about this project, please contact any of the following:

U.S. EPA

Peter Ramanauskas
for general information and on-site work
Tel: (312) 886-7890

Brad Stimple
for creek cleanup work
Tel: (440) 250-1717

IDEM

Gerald O'Callaghan
Tel: (317) 233-1522

ATSDR (Public Health Agency)
Mark Johnson
Tel: (312) 886-0840

**PROJECT INFORMATION AND
TRUCK TRAFFIC COORDINATOR**
Katie Kamm
Tel: (812) 277-8954