



GM CETC BEDFORD FACILITY BEDFORD, INDIANA

RCRA CORRECTIVE ACTION/CERCLA REMOVAL ACTION

G M C E T C B E D F O R D F A C I L I T Y , B E D F O R D , I N D I A N A

Welcome to the 3rd Quarter 2012 Public Information Session July 25, 2012



- Facility located on 152.5 acres and is approximately 1,000,000 square feet of manufacturing footprint
- Approximately 420 employees



- Comprehensive Environmental Response, Compensation, and Liability Act (CERCLA) Removal Action (RA)
 - Bailey's Branch and Pleasant Run PCB cleanup of creek sediments and floodplain soil.
 - RA Elements:
 - Control of impacted springs and seeps along creeks; and
 - Removal of floodplain soil to 1.8 ppm and sediment to 1 ppm in the creek. Removal is complete.
 - Remedy for large spring on Baileys Branch still under review.
 - Restoration will continue into 2012.



REMOVAL ACTION STATUS

RCRA CORRECTIVE ACTION/CERCLA REMOVAL ACTION

G M C E T C B E D F O R D F A C I L I T Y , B E D F O R D , I N D I A N A

COMPLETED
EXCAVATION WEST
OF PEERLESS ROAD

PARCEL 40

PARCEL 400
INVESTIGATION
AREA

WEST PLANT AREA

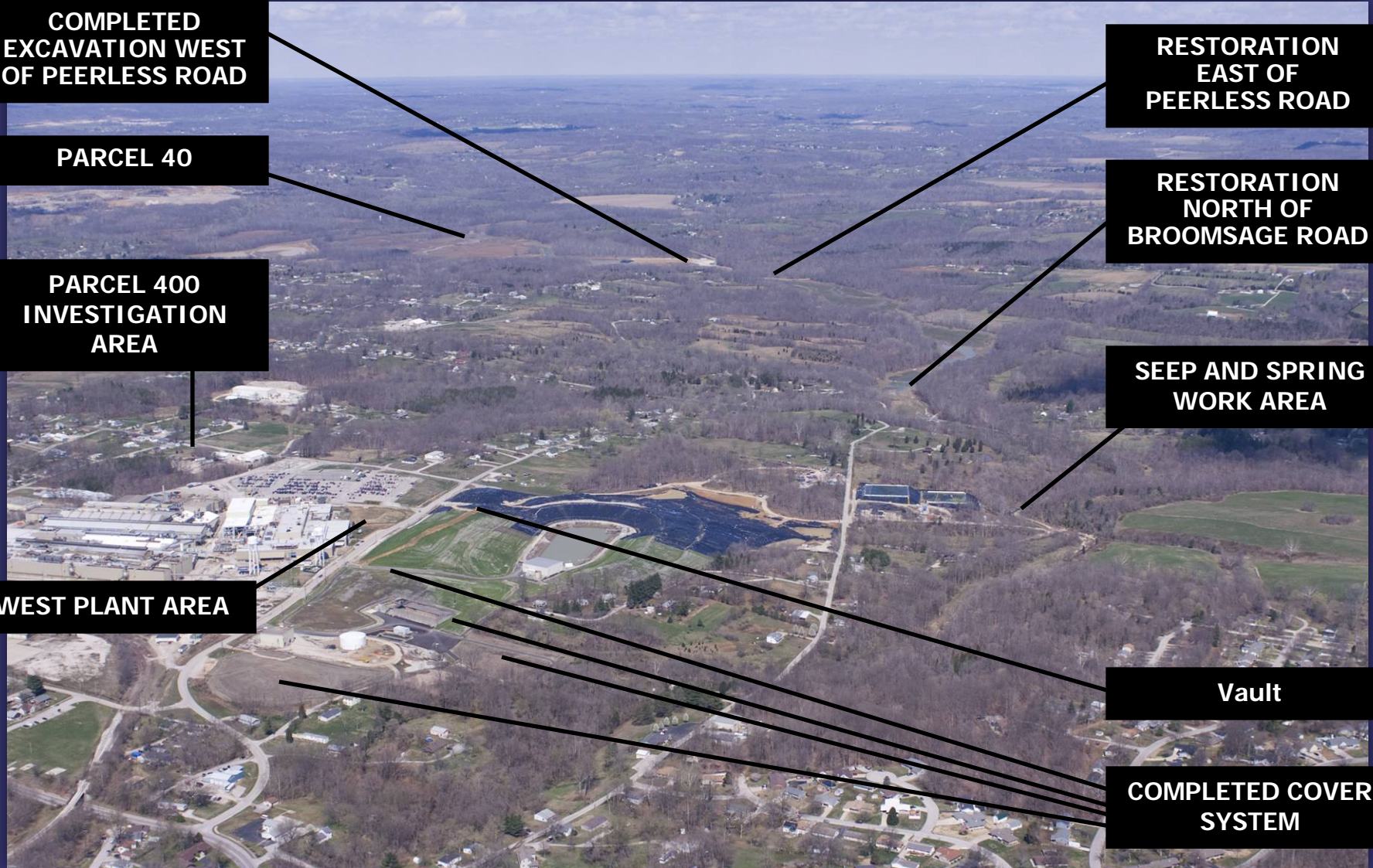
RESTORATION
EAST OF
PEERLESS ROAD

RESTORATION
NORTH OF
BROOMSAGE ROAD

SEEP AND SPRING
WORK AREA

Vault

COMPLETED COVER
SYSTEM

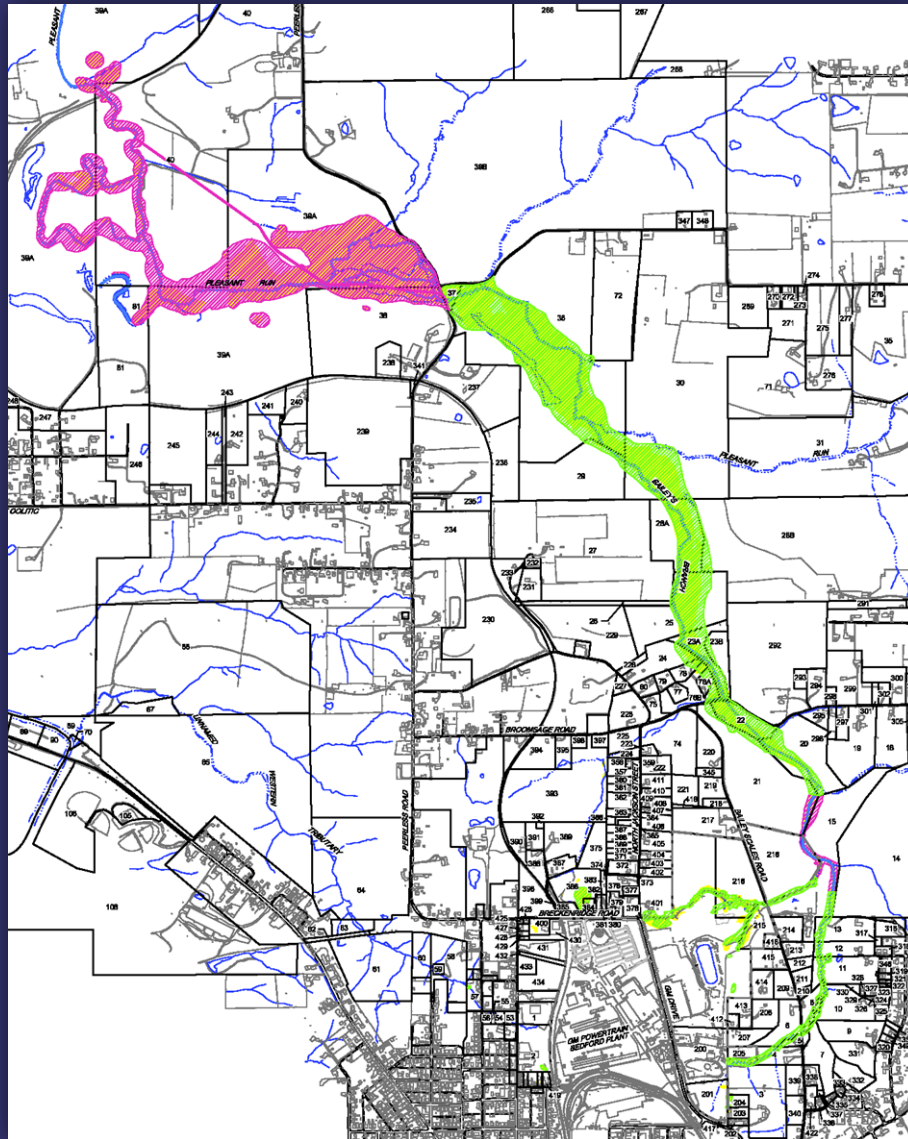




REMOVAL ACTION STATUS

RCRA CORRECTIVE ACTION/CERCLA REMOVAL ACTION

G M C E T C B E D F O R D F A C I L I T Y , B E D F O R D , I N D I A N A





CREEK RESTORATION

RCRA CORRECTIVE ACTION/CERCLA REMOVAL ACTION

G M C E T C B E D F O R D F A C I L I T Y , B E D F O R D , I N D I A N A



Restoration North of Broomsage Road



CREEK RESTORATION

RCRA CORRECTIVE ACTION/CERCLA REMOVAL ACTION

GM CETC BEDFORD FACILITY, BEDFORD, INDIANA



Restoration North of Broomsage Road



CREEK RESTORATION

RCRA CORRECTIVE ACTION/CERCLA REMOVAL ACTION

G M C E T C B E D F O R D F A C I L I T Y , B E D F O R D , I N D I A N A



Overflow Repairs North of Broomsage Road



CREEK RESTORATION STATUS

RCRA CORRECTIVE ACTION/CERCLA REMOVAL ACTION

G M C E T C B E D F O R D F A C I L I T Y , B E D F O R D , I N D I A N A



Restoration east of Peerless Road



CREEK RESTORATION

RCRA CORRECTIVE ACTION/CERCLA REMOVAL ACTION

GM CETC BEDFORD FACILITY, BEDFORD, INDIANA



Restoration East of Peerless Road



CREEK RESTORATION

RCRA CORRECTIVE ACTION/CERCLA REMOVAL ACTION

GM CETC BEDFORD FACILITY, BEDFORD, INDIANA



Parcel 40 and Parcel 81



SPRING 018

RCRA CORRECTIVE ACTION/CERCLA REMOVAL ACTION

GM CETC BEDFORD FACILITY, BEDFORD, INDIANA



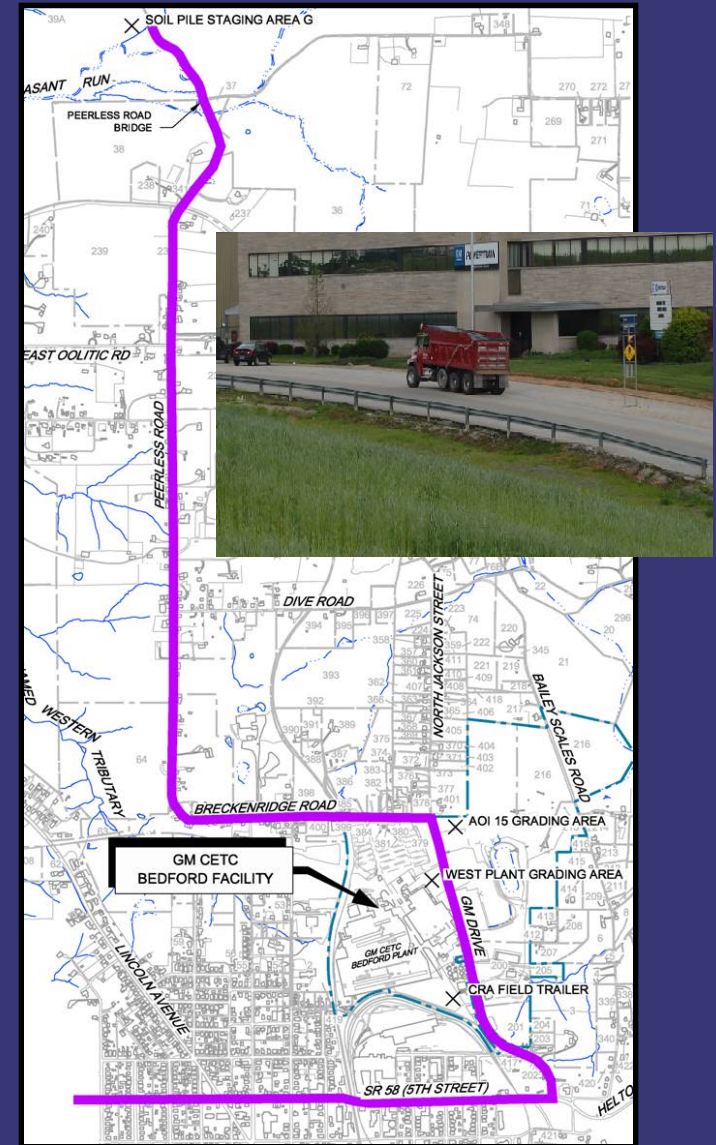


TRUCK TRAFFIC ROUTES

RCRA CORRECTIVE ACTION/CERCLA REMOVAL ACTION

GM CETC BEDFORD FACILITY, BEDFORD, INDIANA

- Construction road traffic has ended as activities related to the creek cleanup and cover system are essentially complete.
- GM will continue to monitor the need for patching roads when truck traffic associated with restoration resumes.
- Trucking may pick up during restoration completion as backfill and topsoil are hauled in for final grading.
- CRA will continue to monitor safety of truckers.
- Once project truck traffic has ended, GM will determine if additional paving will be needed on portions of Peerless and Breckenridge Roads paved in 2010.
- Truck Traffic Issues: Katie Kamm - (812) 277-8954



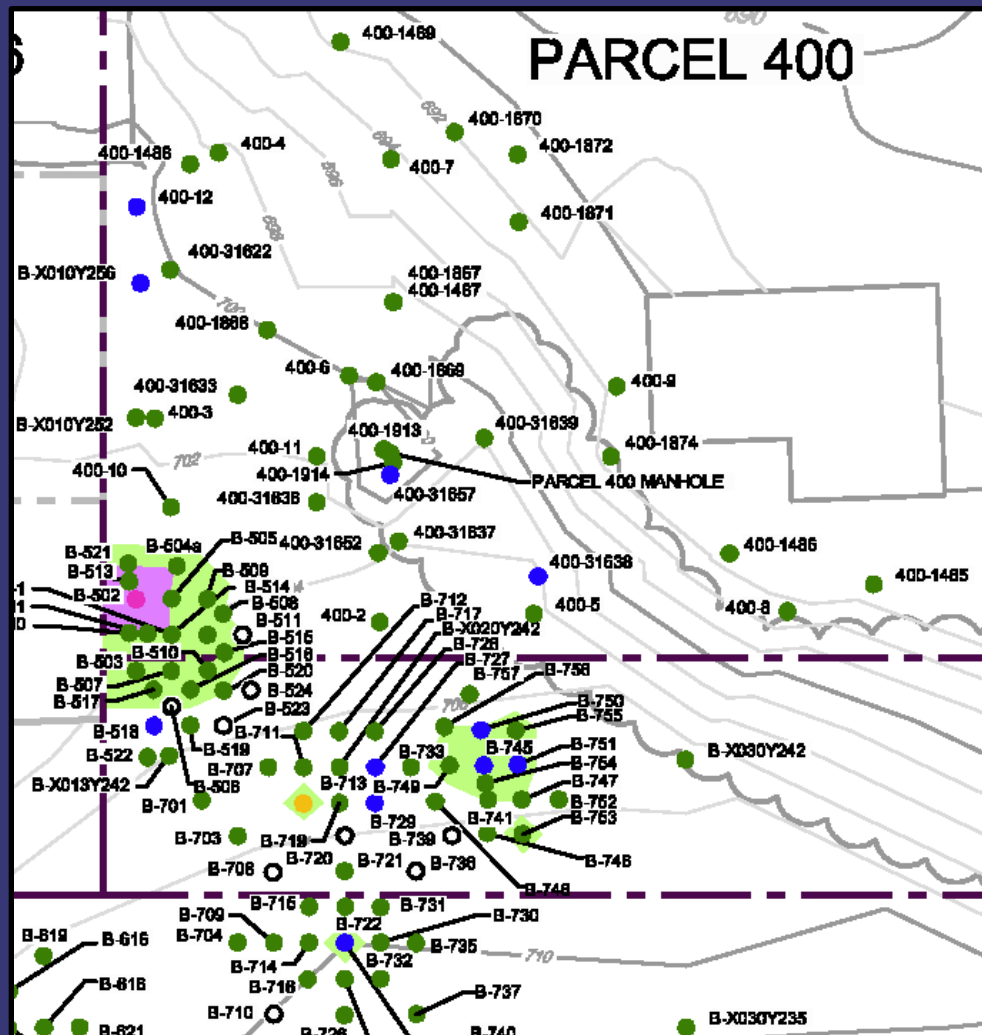


PARCELS 400, 430 AND 431 WORK PLAN SUBMITTAL

RCRA CORRECTIVE ACTION/CERCLA REMOVAL ACTION

GM CETC BEDFORD FACILITY, BEDFORD, INDIANA

- Submitted proposal for Industrial/Commercial prescriptive remediation of properties December 2011
- CRA drafting response to agency comments





RCRA CORRECTIVE ACTION

RCRA CORRECTIVE ACTION/CERCLA REMOVAL ACTION

G M C E T C B E D F O R D F A C I L I T Y , B E D F O R D , I N D I A N A

- RCRA Corrective Action
 - Conducted in accordance with a performance-based agreement with the U.S. EPA Region V. The agreement was signed on March 20, 2001 and amended October 1, 2002, March 29, 2008, and May 9, 2008.



EAST PLANT AREA

RCRA CORRECTIVE ACTION/CERCLA REMOVAL ACTION

GM CETC BEDFORD FACILITY, BEDFORD, INDIANA





Interim Measure

Completed Components

- Re-use of creek soil
- Select soil removal/landfill vault
- Cover system

Pending Componentes

- Perimeter groundwater collection system
- AOI 8 collection system
- Long-term maintenance and monitoring





EAST PLANT AREA

RCRA CORRECTIVE ACTION/CERCLA REMOVAL ACTION

G M C E T C B E D F O R D F A C I L I T Y , B E D F O R D , I N D I A N A



Completed and partially completed cover work around the storm water pond.



EAST PLANT AREA

RCRA CORRECTIVE ACTION/CERCLA REMOVAL ACTION

G M C E T C B E D F O R D F A C I L I T Y , B E D F O R D , I N D I A N A



Detention basin construction north of the storm water pond completed in 2011.



EAST PLANT AREA

RCRA CORRECTIVE ACTION/CERCLA REMOVAL ACTION

G M C E T C B E D F O R D F A C I L I T Y , B E D F O R D , I N D I A N A





EAST PLANT AREA

RCRA CORRECTIVE ACTION/CERCLA REMOVAL ACTION

G M C E T C B E D F O R D F A C I L I T Y , B E D F O R D , I N D I A N A



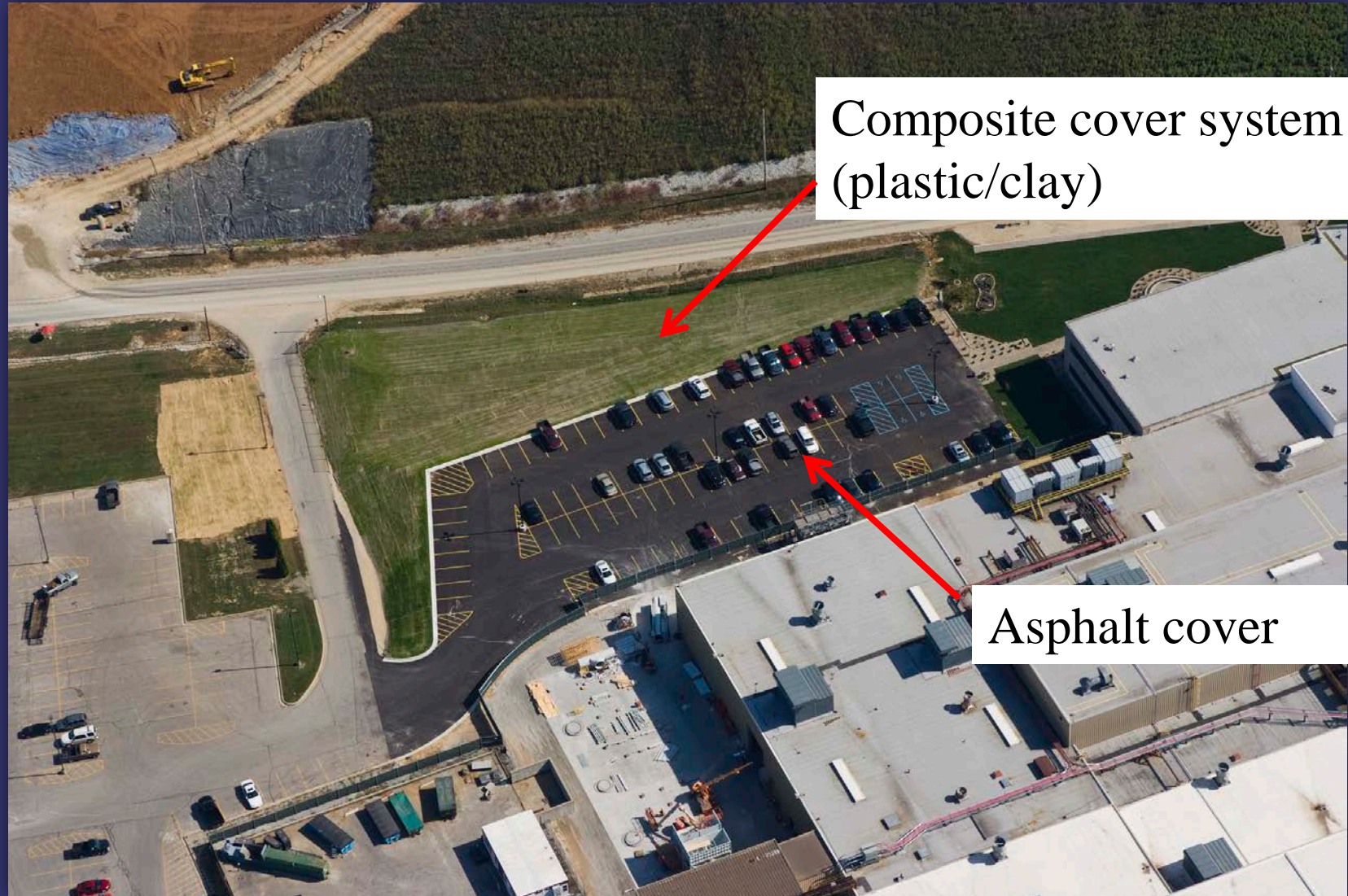
- Overseeding of vegetation areas was completed in fall 2010 – good grass growth emerged this spring. Areas are very dry right now.



WEST PLANT AREA

RCRA CORRECTIVE ACTION/CERCLA REMOVAL ACTION

GM CETC BEDFORD FACILITY, BEDFORD, INDIANA



Composite cover system
(plastic/clay)

Asphalt cover



WEST PLANT AREA

RCRA CORRECTIVE ACTION/CERCLA REMOVAL ACTION

G M C E T C B E D F O R D F A C I L I T Y , B E D F O R D , I N D I A N A

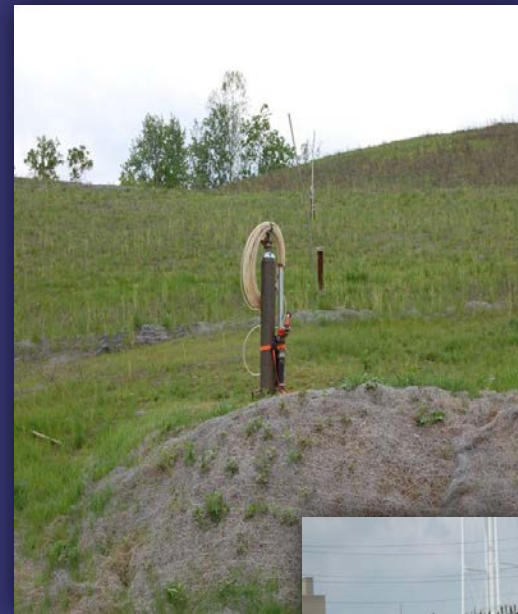


- Construction of the permanent vegetative and asphalt cover placed over the former excavation.
- Completed in August 2011.



AOI 8 COLLECTION SYSTEM

- Oil recovery testing scheduled for summer 2012
- Vertical oil delineation testing at 2 wells southeast of the facility completed in 2011
- Packer testing confirmed the location of fractures containing oil.
- Following review of collected data, the requirements for an oil recovery system will be determined in 2012/2013



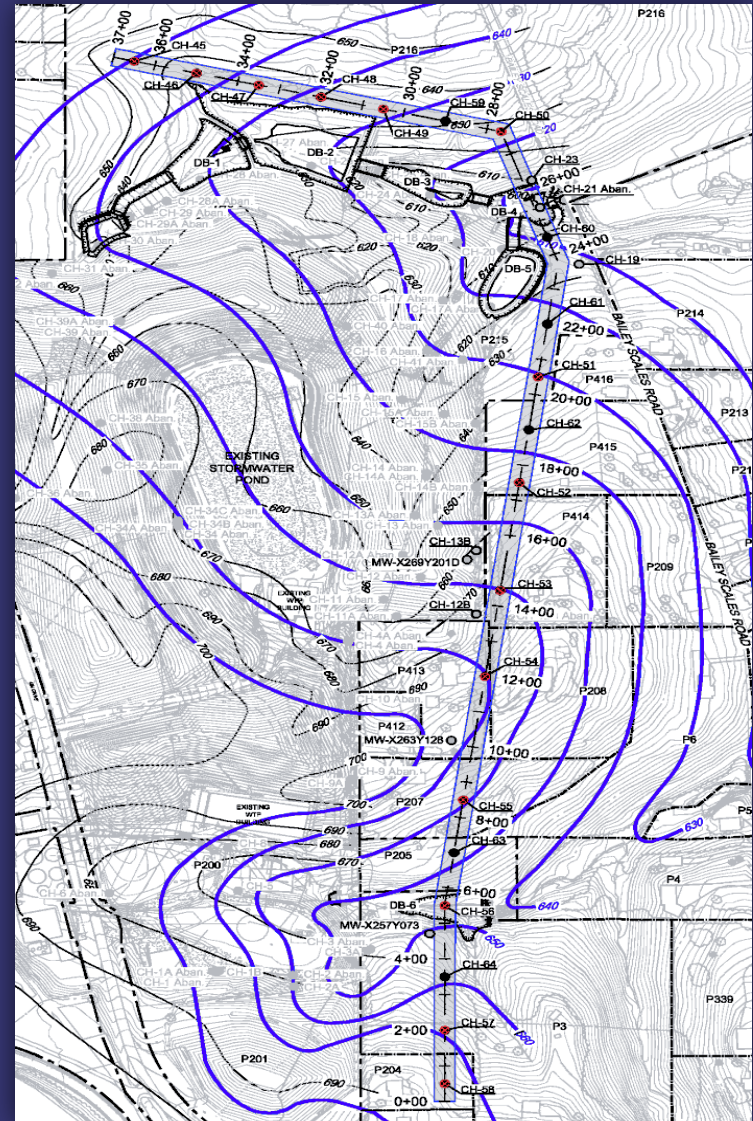


GROUNDWATER COLLECTION TRENCH

RCRA CORRECTIVE ACTION/CERCLA REMOVAL ACTION

G M C E T C B E D F O R D F A C I L I T Y , B E D F O R D , I N D I A N A

- Alignment adjustments by purchasing properties to minimize disturbance of the Cover System
- Coring along new alignment was initiated this summer
- Pilot trench design will be revised for new alignment based on bedrock study being completed now





GROUNDWATER COLLECTION TRENCH

RCRA CORRECTIVE ACTION/CERCLA REMOVAL ACTION

GM CETC BEDFORD FACILITY, BEDFORD, INDIANA





UPCOMING ACTIVITIES

RCRA CORRECTIVE ACTION/CERCLA REMOVAL ACTION

G M C E T C B E D F O R D F A C I L I T Y , B E D F O R D , I N D I A N A

UPCOMING ACTIVITIES FOR 2012

- Complete oil recovery test at AOI 8
- Complete Spring 018 evaluation
- Continue RFI groundwater monitoring
- Complete installation of additional coreholes along alignment of perimeter groundwater collection trench
- Complete excavation of impacted soil on properties west of the Plant

UPCOMING ACTIVITIES FOR 2012/2013

- Complete installation of pilot groundwater collection trench
- Restore Spring 18 area after any additional remedy is complete
- Complete restoration of properties west of Peerless Road



COMMUNITY RELATIONS ACTIVITIES

RCRA CORRECTIVE ACTION/CERCLA REMOVAL ACTION

G M C E T C B E D F O R D F A C I L I T Y , B E D F O R D , I N D I A N A

- Community meetings have been held on a quarterly basis.
 - Due to the significantly reduced activities during the winter, no meetings were conducted the first half of 2012
 - GM is revising the public invitation mailing list based on postcard responses. Meetings will continue to be announced in the Bedford Times Mail.
 - Presentations have been and will continue to be posted to the website
 - People can always call Katie Kamm with questions:
(812) 277-8954
- A CLP Meeting was held today



COMMUNITY RELATIONS ACTIVITIES

RCRA CORRECTIVE ACTION/CERCLA REMOVAL ACTION

G M C E T C B E D F O R D F A C I L I T Y , B E D F O R D , I N D I A N A

- Project website at:
<http://www.BedfordPowertrainCorrectiveAction.com>
- Quarterly Community Meetings are available on the website
- All final approved documents can be found on the project website
- Community Liaison Panel (CLP) – members listed in minutes on website
- Periodic information sessions – next meeting likely to be held in fall 2012.
- Periodic Project Fact Sheets (thirty-four issued to date)
- Project Questions or Truck Traffic Issues contact Katie Kamm:
(812) 277-8954