



## Public Information Session December 9, 2015



- Facility located on 152.5 acres and is approximately 1,000,000 square feet of manufacturing footprint
- Approximately 719 employees

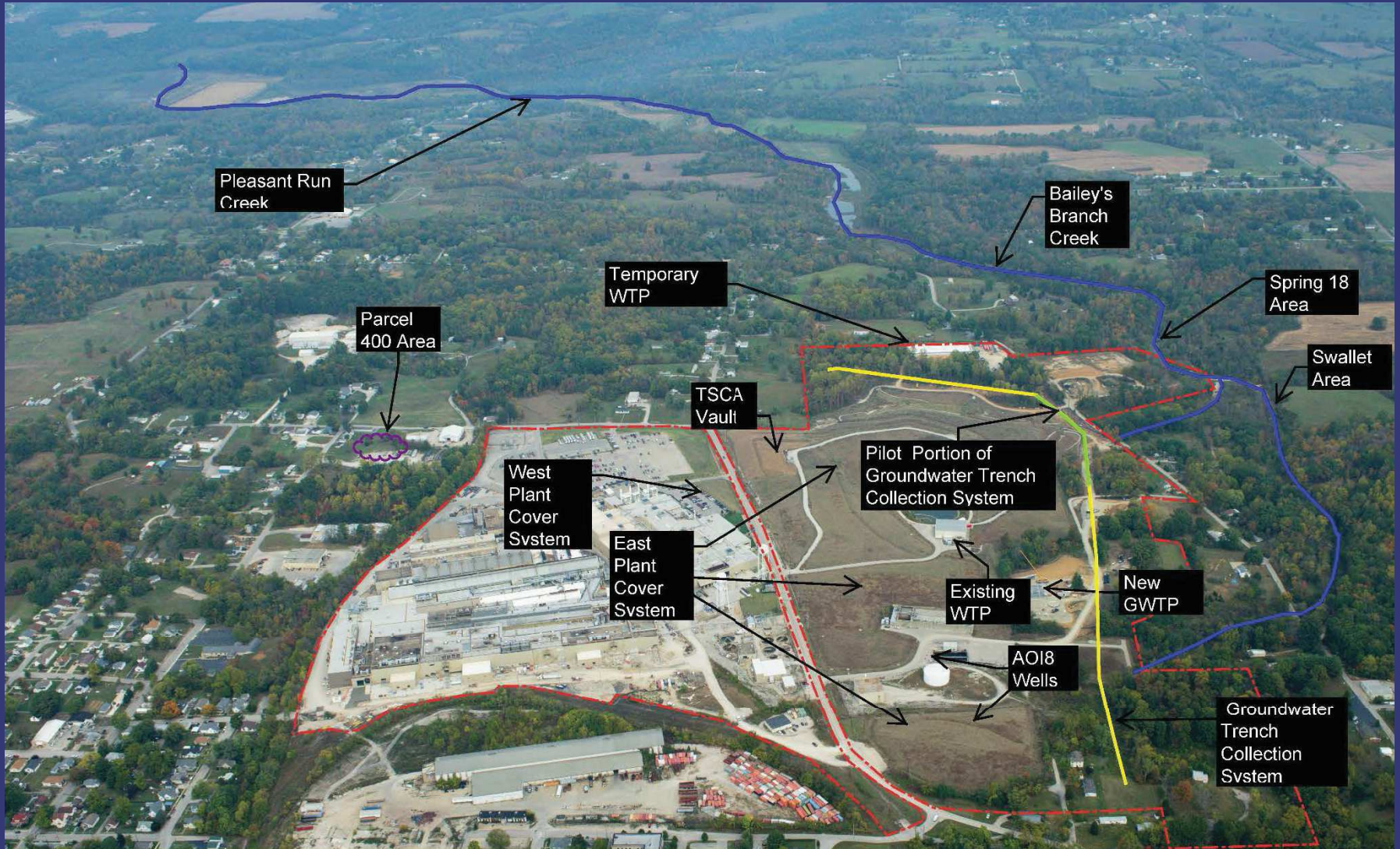


- Comprehensive Environmental Response, Compensation, and Liability Act (CERCLA) Removal Action (RA)
  - Bailey's Branch and Pleasant Run PCB cleanup of creek sediments and floodplain soil
  - RA Elements:
    - Control of impacted springs and seeps along creek
    - Removal of floodplain soil to 1.8 ppm and sediment to 1 ppm in the creek (removal is complete)
  - Monitoring continues for large spring on Baileys Branch and
  - Creek and floodplain restoration completed in August 2014
- RCRA Corrective Action
  - GM LLC and USEPA entered into an AOC for those areas which GM LLC is responsible.



# GM BEDFORD REMEDIATION PROJECT

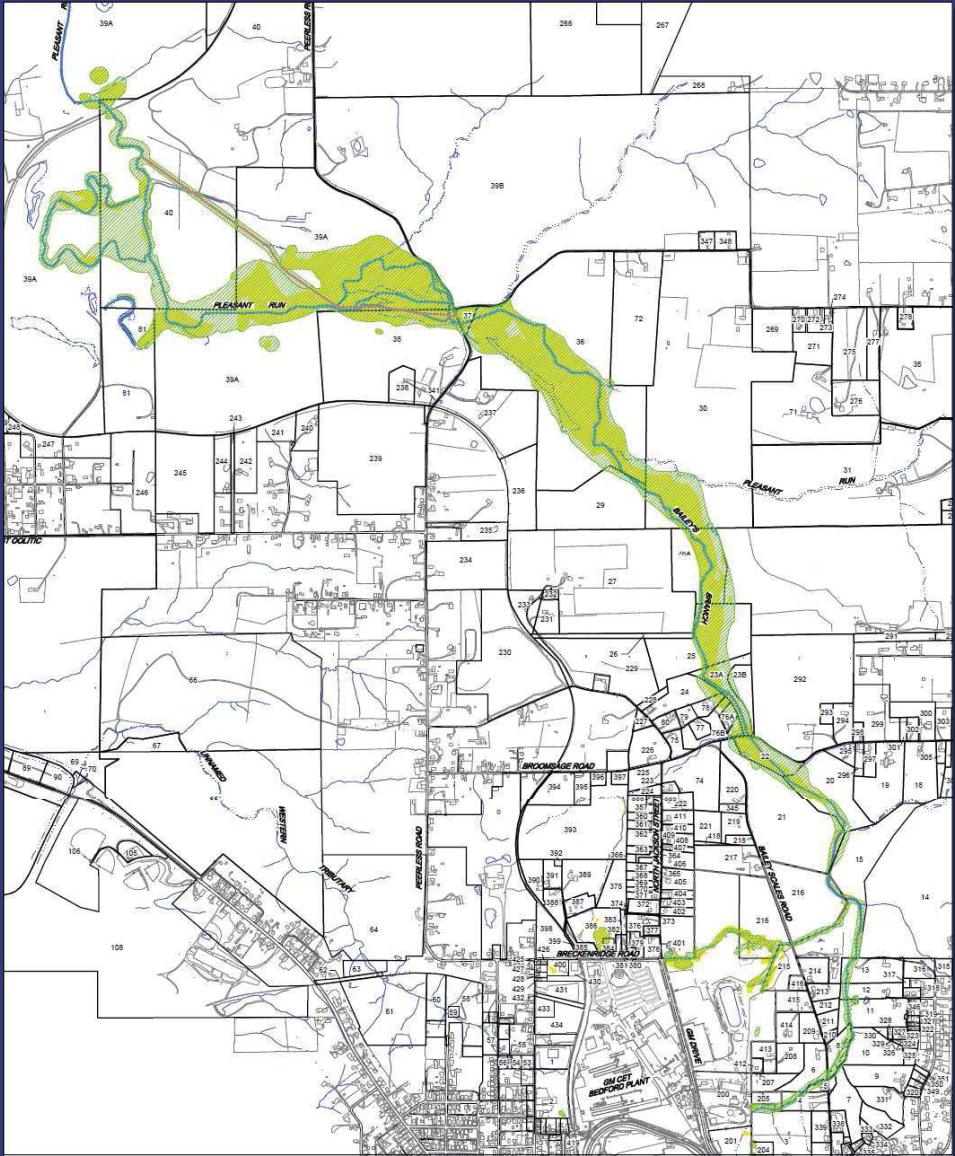
G M C E T B E D F O R D F A C I L I T Y , B E D F O R D , I N D I A N A





# REMOVAL ACTION STATUS

G M C E T B E D F O R D F A C I L I T Y , B E D F O R D , I N D I A N A

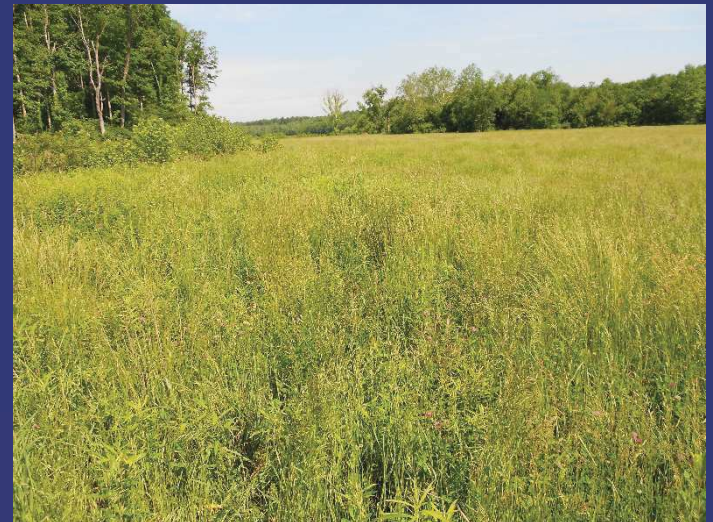




# INSPECTION OF DOWNSTREAM PARCELS

G M C E T B E D F O R D F A C I L I T Y , B E D F O R D , I N D I A N A

- Downstream monitoring and maintenance conducted in May and October 2015
- Restoration doing well





# CREEK REMEDIATION/RESTORATION STATUS WEST OF BAILEY SCALES ROAD

G M C E T B E D F O R D F A C I L I T Y , B E D F O R D , I N D I A N A





# CREEK REMEDIATION/RESTORATION STATUS EAST OF BAILEY SCALES ROAD

G M C E T B E D F O R D F A C I L I T Y , B E D F O R D , I N D I A N A





# CREEK REMEDIATION/RESTORATION STATUS PARCEL 22

G M C E T B E D F O R D F A C I L I T Y , B E D F O R D , I N D I A N A







# CREEK REMEDIATION/RESTORATION STATUS PARCEL 76

G M C E T B E D F O R D F A C I L I T Y , B E D F O R D , I N D I A N A





# CREEK REMEDIATION/RESTORATION STATUS PARCEL 36

G M C E T B E D F O R D F A C I L I T Y , B E D F O R D , I N D I A N A

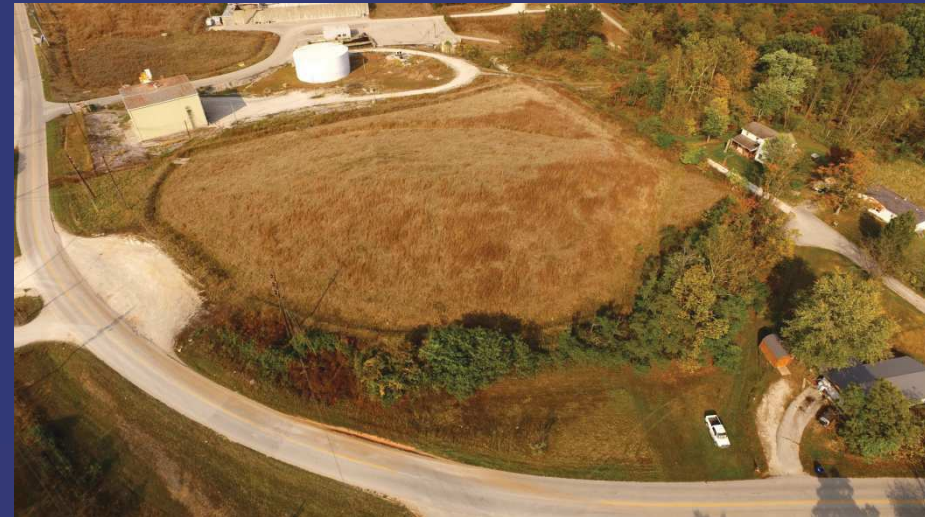




# COVER SYSTEM MONITORING AND MAINTENANCE

G M C E T B E D F O R D F A C I L I T Y , B E D F O R D , I N D I A N A

- GM conducts quarterly inspections of the cover system
- Inspections found:
  - Tree saplings which were removed when found (primarily in ditches and adjacent to wooded areas)
  - Riprap washout in diversion channel (repaired with larger riprap)
  - Minor asphalt cracks (repairs planned following construction completion of GWTP and Pilot Trench)





# VAULT OPERATIONS, MONITORING & MAINTENANCE

G M C E T B E D F O R D F A C I L I T Y , B E D F O R D , I N D I A N A

- Monitoring of the gravel underdrain system, leak detection system and leachate collection systems continues
  - Not enough water to collect monthly samples from the LDS in December 2014 through June 2015, and again in August 2015
- Vault Annual Report for 2014 submitted on July 15, 2015





# SSC OPERATION AND MAINTENANCE

G M C E T B E D F O R D F A C I L I T Y , B E D F O R D , I N D I A N A

- Operation of the Site Source Control (SSC) System continues





# WATER TREATMENT PLANT OPERATIONS

G M C E T B E D F O R D F A C I L I T Y , B E D F O R D , I N D I A N A

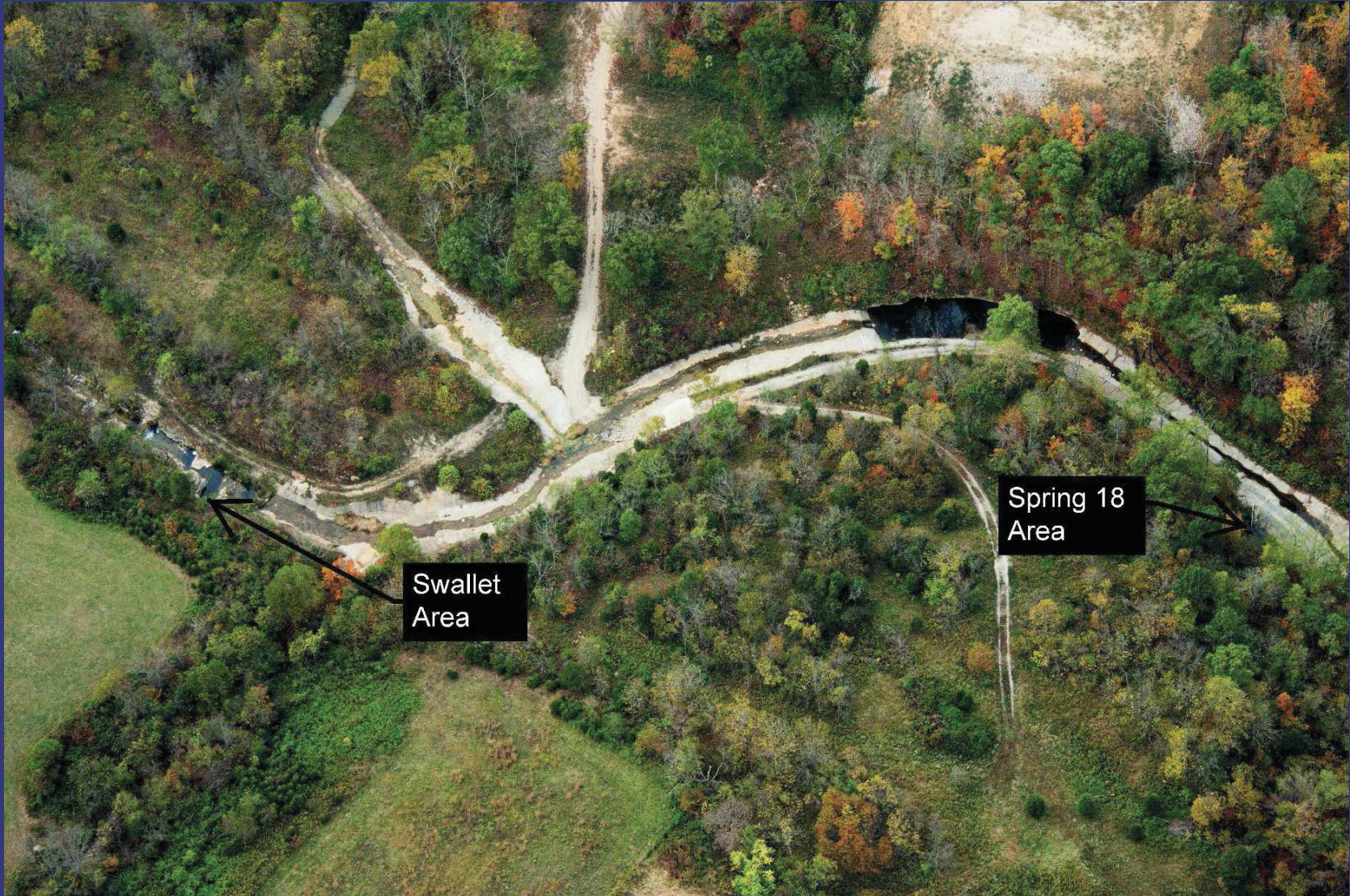
- SSC water and storm pond water treatment continues
- Continue to address algae fouling – phoslock was applied in June 2015
- Installed additional bag filters prior to carbon units
- Installed components to backwash filter media using treated groundwater





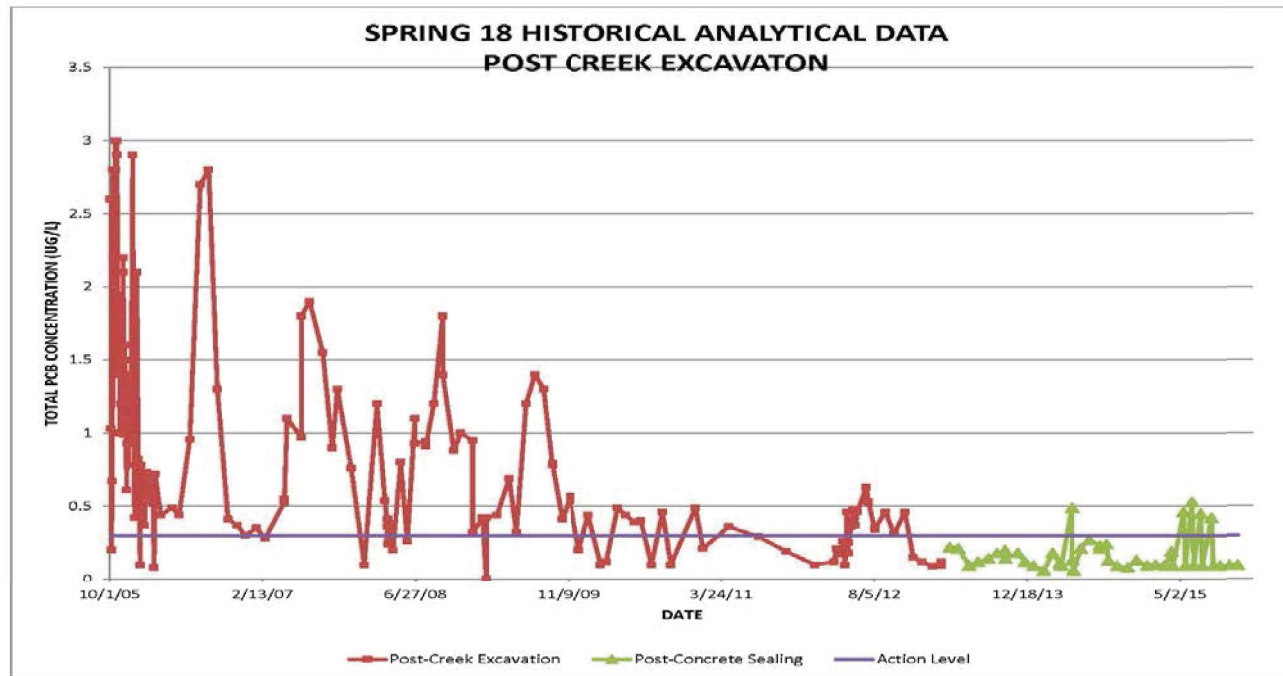
# ADDITIONAL CREEK WORK

G M C E T B E D F O R D F A C I L I T Y , B E D F O R D , I N D I A N A





- Continue to collect monthly quarterly opportunistic samples from Spring 18 and analyze for PCBs
- No opportunistic samples were collected during the 3<sup>rd</sup> quarter of 2015
- 12-month rolling average (December 2014 - November 2015) = 0.18 ug/L



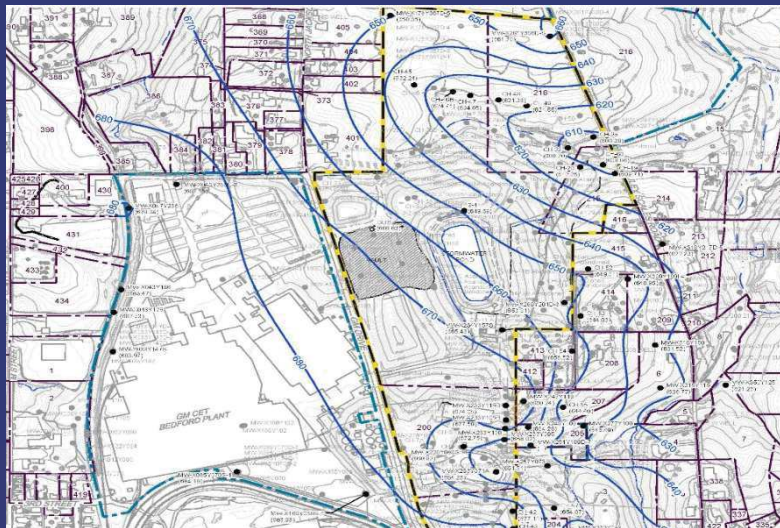


- Additional sealing of cracks in the rock

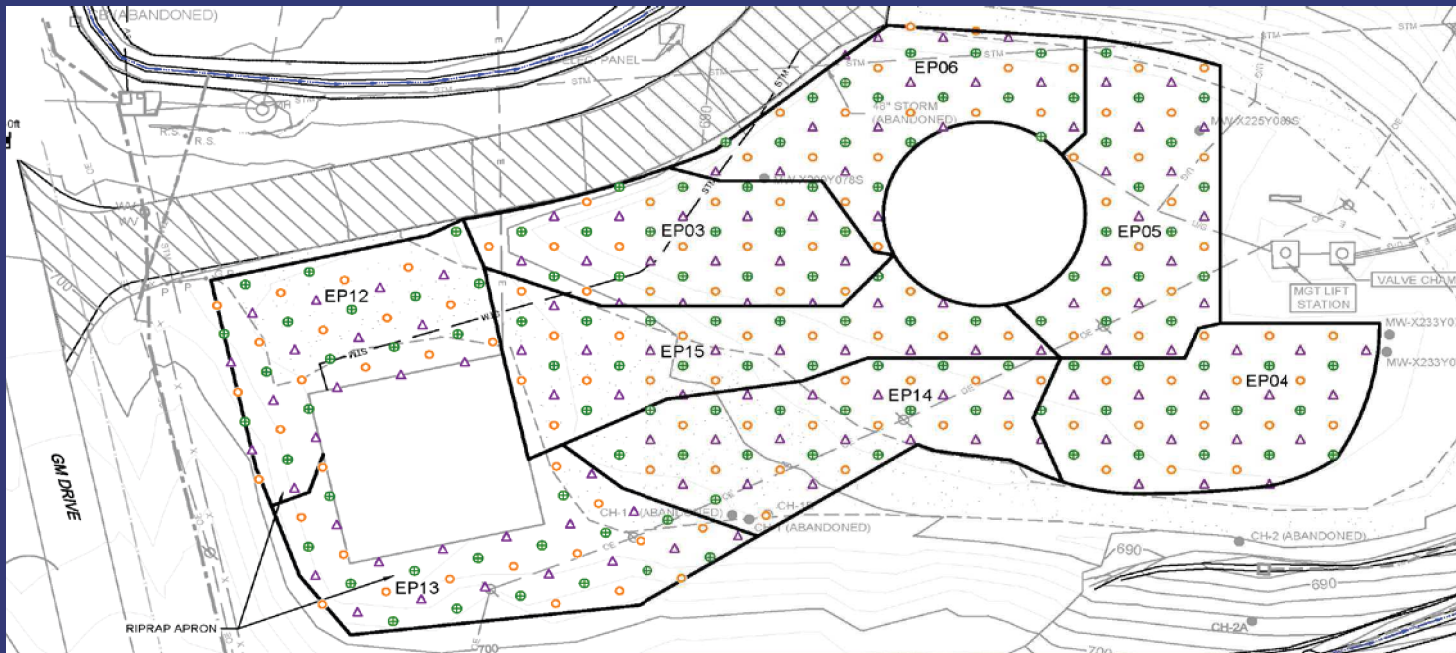


G M C E T B E D F O R D F A C I L I T Y , B E D F O R D , I N D I A N A

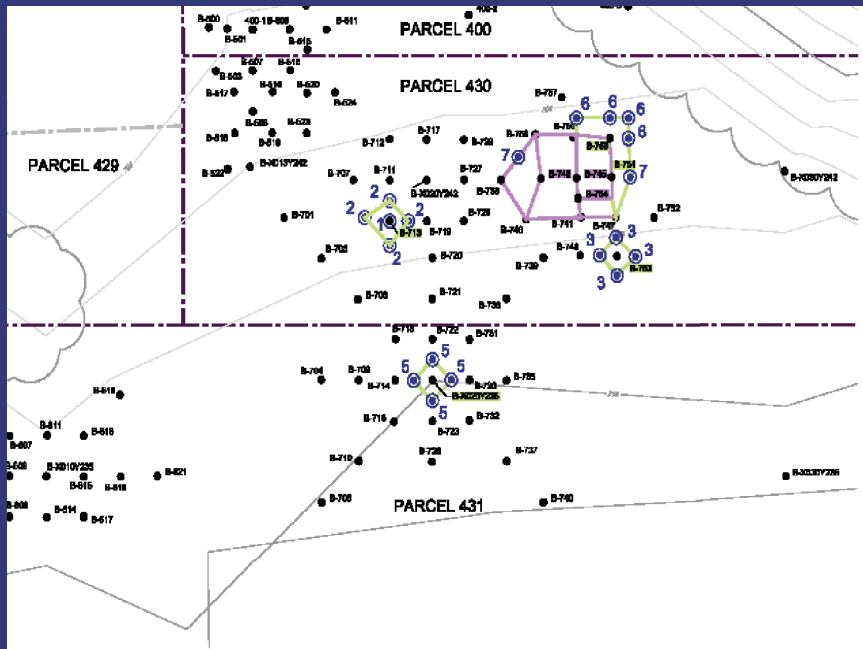
- Quarterly static groundwater level measurements collected in September 2015
- EI CA750 sampling event conducted in May 2015 - results provided to U.S.EPA in October 2015
- Groundwater elevations appear to show no significant changes under the Cover System
- Second 2015 sampling event occurred in early November 2015
- EI CA750 or pilot trench monitoring program will continue until a long term groundwater monitoring plan is in place
- Re-assess frequency and/or scope of monitoring



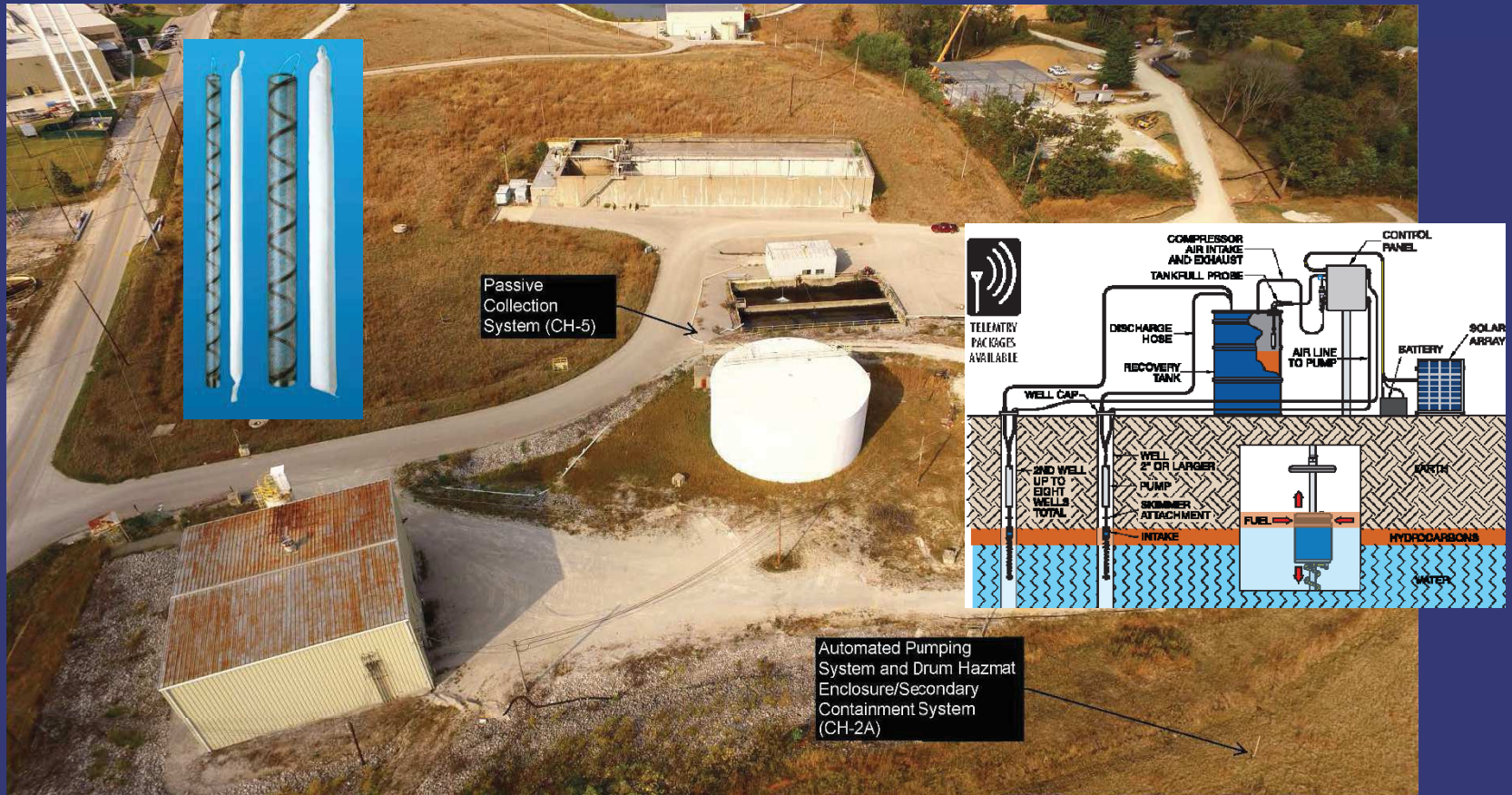
- incremental surface soil sampling will be conducted in select areas of the East Plant and West Plant Areas
- Sampling will target areas:
  - Not covered by East/West Plant Cover System
  - Not currently paved with hard surface maintained by Plant
  - Areas more prone to potential worker exposures



- Additional boreholes to be advanced to further delineate the proposed prescriptive excavation limit
- Cleanup activities will be developed following delineation



- U.S.EPA approved conceptual design
- Working with supplier to design site-specific oil collection system





# WATER TREATMENT PLANT OPERATIONS

G M C E T B E D F O R D F A C I L I T Y , B E D F O R D , I N D I A N A

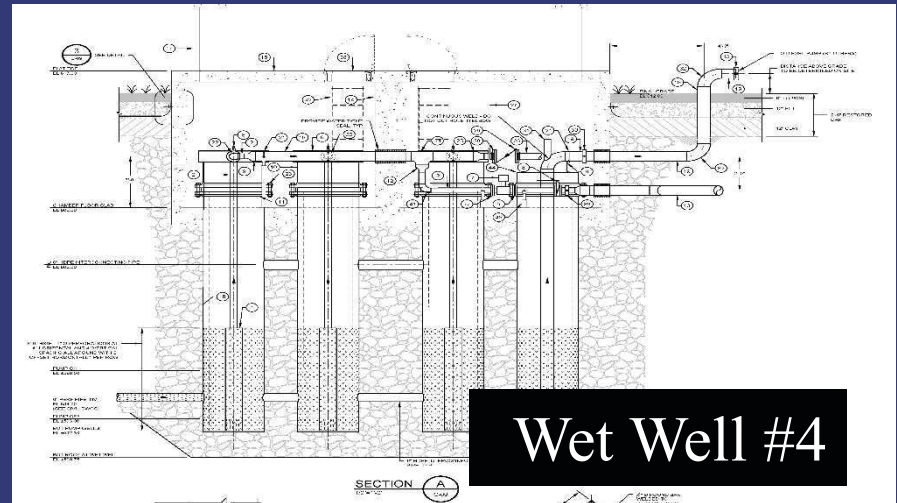
- GM is constructing a GWTP to treat waters generated from remediation water including waters from the perimeter groundwater trench collection system
- Construction is to be completed by the end of 2015
- Treated groundwater will be discharged under a NPDES permit (public notice ended November 16, 2015)





# GWTP INPUTS

G M C E T B E D F O R D F A C I L I T Y , B E D F O R D , I N D I A N A





# PILOT PERIMETER GROUNDWATER TRENCH COLLECTION SYSTEM

G M C E T B E D F O R D F A C I L I T Y , B E D F O R D , I N D I A N A

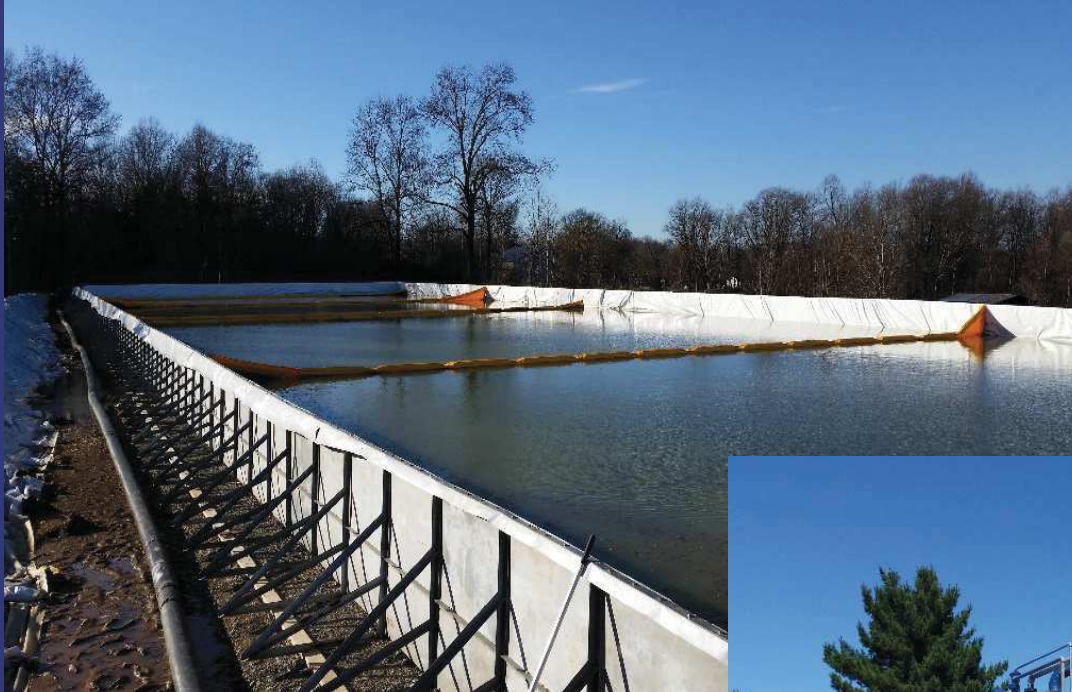
- Pilot perimeter groundwater trench collection system construction began in August 2015 with construction of the working platform
- Rock cutting began in October 2015 and has been completed
- Wet well, perforated pipe and gravel backfill to be installed during December 2015
- Final backfill and cover system to be installed during January and February 2016





# TEMPORARY WATER TREATMENT PLANT

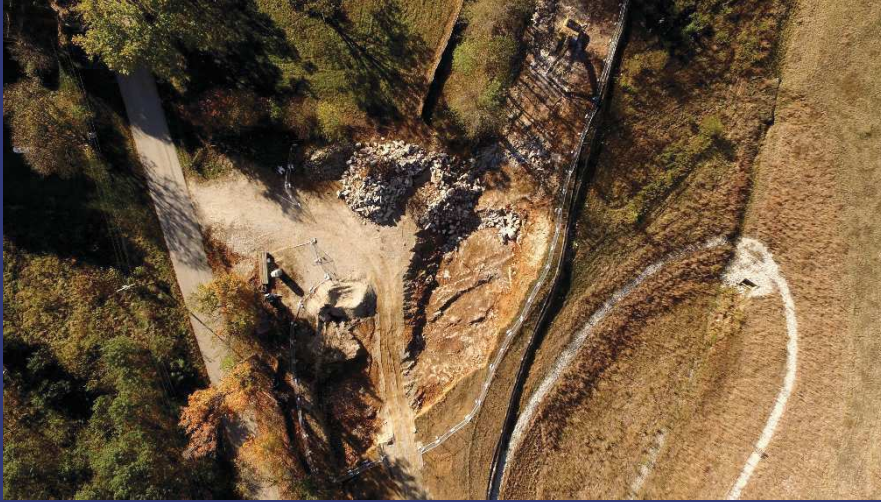
G M C E T B E D F O R D F A C I L I T Y , B E D F O R D , I N D I A N A





# WORKING PLATFORM CONSTRUCTION

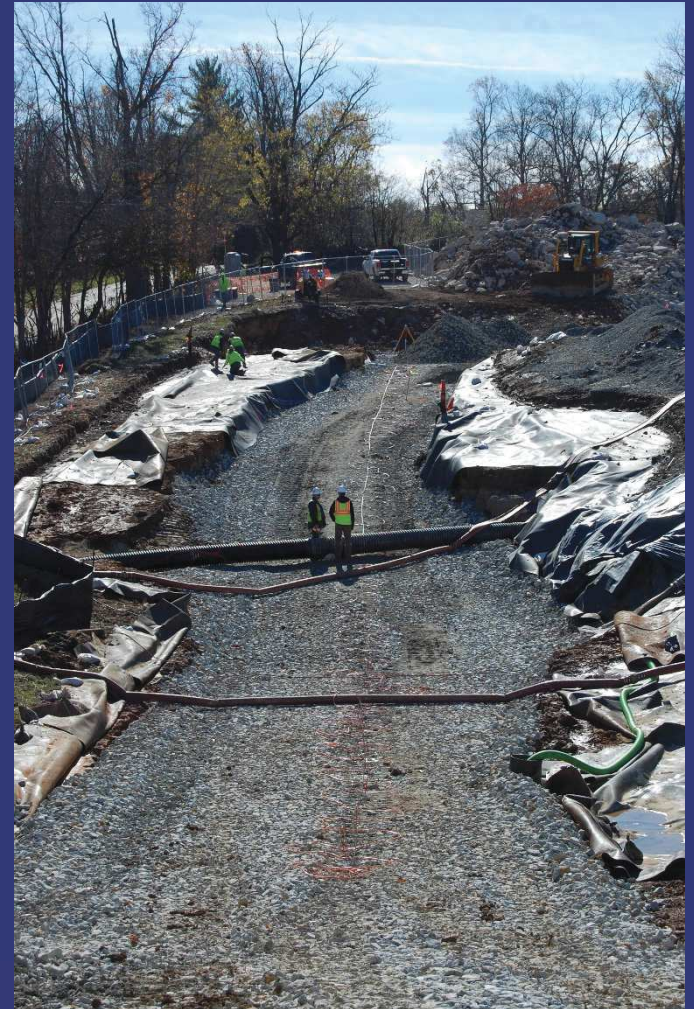
G M C E T B E D F O R D F A C I L I T Y , B E D F O R D , I N D I A N A





# SUPPORT ACTIVITIES

G M C E T B E D F O R D F A C I L I T Y , B E D F O R D , I N D I A N A





# TRENCHER ASSEMBLY

G M C E T B E D F O R D F A C I L I T Y , B E D F O R D , I N D I A N A





# TRENCHER ASSEMBLY

G M C E T B E D F O R D F A C I L I T Y , B E D F O R D , I N D I A N A





# TRENCH CONSTRUCTION

G M C E T B E D F O R D F A C I L I T Y , B E D F O R D , I N D I A N A





# TRENCH CONSTRUCTION

G M C E T B E D F O R D F A C I L I T Y , B E D F O R D , I N D I A N A





- Community meetings have been held on a regular basis, currently meeting twice/year
  - Meetings will continue to be announced in the Bedford Times Mail
  - Presentations have been and will continue to be posted to the website and the library
  - People can always call Katie Kamm with questions: (812) 277-8954
- A CLP meeting was held today
- Information from the presentations and meeting minutes are posted to the website





G M C E T B E D F O R D F A C I L I T Y , B E D F O R D , I N D I A N A

- Project website at:  
<http://www.BedfordPowertrainCorrectiveAction.com>
- Quarterly Community Meetings are available on the website
- Final approved documents can be found on the project website
- Community Liaison Panel (CLP) – members listed in minutes on website
- Periodic information sessions – next meeting likely to be held June 2016.
- Periodic Project Fact Sheets (forty-one issued to date)
- Project Questions contact Katie Kamm: (812) 277-8954