

# **RCRA FACILITY INVESTIGATION**

## **QUARTERLY PROGRESS REPORT #32 FIRST QUARTER 2009**

**GM POWERTRAIN - BEDFORD FACILITY  
105 GM DRIVE  
BEDFORD, INDIANA**

**EPA ID# IND006036099**

**Prepared For:  
General Motors Corporation**

**APRIL 14, 2009**

**REF. NO. 013968 (301)**

This report is printed on recycled paper.

TABLE OF CONTENTS

	<u>Page</u>
1.0 <u>INTRODUCTION</u> .....	3
2.0 <u>LIST OF COMPLETED ACTIVITIES</u> .....	4
3.0 <u>SUMMARIES OF ALL CHANGES MADE IN THE CORRECTIVE ACTION (CA) DURING THE REPORTING PERIOD</u> .....	6
4.0 <u>COMMUNITY RELATIONS</u> .....	7
5.0 <u>CHANGES IN PERSONNEL DURING THE REPORTING PERIOD</u> .....	8
6.0 <u>PROJECTED WORK FOR THE NEXT REPORTING PERIOD</u> .....	9
7.0 <u>COPIES OF DAILY REPORTS, INSPECTION REPORTS, LABORATORY/MONITORING DATA</u> .....	10

LIST OF FIGURES

FIGURE 7.1      PARCEL 400 VALIDATED SAMPLE LOCATIONS

LIST OF TABLES

TABLE 7.1      VALIDATED SAMPLE RESULTS - PARCEL 400

**QUARTERLY PROGRESS REPORT  
DISTRIBUTION LIST**

<b>U.S. EPA - Waste, Pesticide and Toxins Division, Project Manager</b>	<b>Peter Ramanauskas (via e-mail)</b>
<b>U.S. EPA - Emergency Response Branch, On-Scene Coordinator</b>	<b>Brad Stimple</b>
<b>TN and Associates, U.S. EPA Consultant</b>	<b>Stacy DeLaReintrie</b>
<b>Indiana Department of Environmental Management</b>	<b>Gerald O'Callaghan (via e-mail)</b>
<b>U.S. Fish and Wildlife Service</b>	<b>Dan Sparks</b>
<b>GM WFG Remediation</b>	<b>Cheryl Hiatt/Ed Peterson</b>
<b>CRA, Project Coordinator</b>	<b>James McGuigan (via e-mail)</b>
<b>CRA, Project Geologist</b>	<b>Bill Steinmann (via e-mail)</b>
<b>CRA, Oversight Engineer</b>	<b>Katie Kamm</b>
<b>CRA, QA/QC Officer</b>	<b>Jeff Nichols</b>
<b>ENVIRON</b>	<b>Steve Song (via e-mail)</b>

## 1.0 INTRODUCTION

This Quarterly Progress Report is submitted in accordance with the Bedford Performance-Based Corrective Action Agreement (Agreement) between the United States Environmental Protection Agency (U.S. EPA) and General Motors Corporation (GM), executed on March 20, 2001, and modified on October 1, 2002, March 29, 2007, and May 9, 2008. This report covers the period of the first calendar quarter of 2009 for the GM Powertrain - Bedford Facility (Facility), Bedford, Indiana. Some of the activities conducted as part of the overall Resource Conservation and Recovery Act (RCRA) Corrective Action (CA) are being addressed under the Comprehensive Environmental Response, Compensation, and Liability Act (CERCLA) Removal Action (RA) Program, pursuant to the Administrative Order on Consent (AOC) between U.S. EPA and GM (effective July 31, 2003). These activities are described in more detail within the CERCLA Monthly Progress Reports referred to herein.

The next quarterly progress report, covering the Second Quarter of 2009, will be submitted on or before July 15, 2009.

## 2.0 LIST OF COMPLETED ACTIVITIES

The following activities took place and the following documents were prepared and distributed during this quarter:

- Conference calls were held with U.S. EPA, Indiana Department of Environmental Management (IDEM), the Agency for Toxic Substance and Disease Registry (ATSDR), and Indiana State Department of Health (ISDH) on January 6, and 20; February 3, and 17; and March 2, and 17 to discuss project progress (United States Fish and Wildlife Service (USFWS) was also invited to attend the update calls);
- Fact Sheet 23 was released to the public and U.S. EPA on March 16;
- Information sessions for the public were held at the Facility during the First Quarter on March 25 and 26;
- The Community Liaison Panel (CLP) met on March 27;
- A figure of the Parcel 400 proposed sampling locations and surrounding properties was sent via e-mail to U.S. EPA on January 6;
  - On March 23, a results summary for sampling completed on Parcel 400 was sent to the U.S. EPA via e-mail. U.S. EPA responded via e-mail with comments regarding the Parcel 400 sampling;
- Quarterly Progress Report #31 for the Fourth Quarter of 2008 was submitted January 14 to the U.S. EPA via e-mail;
  - U.S. EPA responded via e-mail on January 14 regarding an error on Table 2.1 and comments on dust control measures;
  - A corrected Table 2.1 was e-mailed to the U.S. EPA on January 14;
- On January 22, photos of the ongoing work activities at the East and West Plant areas were sent to U.S. EPA via e-mail;
- On February 5, U.S. EPA sent an e-mail regarding the feasibility of implementing solar power to supplement grid electricity supplied to the future Spring 18 Treatment system;
  - On February 6, an e-mail was sent to U.S. EPA regarding the intent of further investigation into this issue;
- An e-mail was sent to U.S. EPA on February 6 regarding the status of annual monitoring/reporting and closure/post-closure of the Vault;
  - A follow-up e-mail was sent to U.S. EPA on February 19 requesting permission to submit three annual reports under one cover;

- U.S. EPA responded via e-mail on February 20 approving one annual report to cover the 2006, 2007, and 2008 calendar years;
- A summary of the EI CA750 October and November 2008 sampling results were sent to U.S. EPA via e-mail on February 17;
- U.S. EPA responded via e-mail on February 18 requesting a databox figure showing the results and additional information on how the equipment blank problems directly affected the results;
- Databox figures showing the results and additional information on the equipment blank problems were sent to U.S. EPA via e-mail on March 31;
- A figure showing the proposed monitoring well locations around the former AOI 21 area 2 (AOI 21-2) excavation and the asphalt paved cover system in the West Plant was submitted to U.S. EPA on March 31; and
- The January 2009, February 2009, and March 2009 CERCLA RA Monthly Progress Reports were submitted during the First Quarter of 2009.

**3.0 SUMMARIES OF ALL CHANGES MADE IN THE  
CORRECTIVE ACTION (CA) DURING THE REPORTING PERIOD**

The following changes were made to the CA during the reporting period:

- Publication of Fact Sheet 23 on March 16, 2009.

#### 4.0 COMMUNITY RELATIONS

The telephone number for public contact (Susan Waun, GM Communications) is 812-583-3753. Individual meetings can also be arranged to discuss sampling results with residents as requested.

Quarterly meetings to review project status are held both with the neighbors along the creek and around the plant, as well as with the general public. Quarterly meetings were held during this reporting period on March 25 and 26, 2009. The meetings were held as regular project update information sessions from 6:30 PM to 8:00 PM at the Bedford Facility. Presentations for the meetings are posted on the web site at [www.bedfordpowertraincorrectiveaction.com](http://www.bedfordpowertraincorrectiveaction.com). The next set of public meetings will be held in June 2009 on a date to be determined.

Fact Sheet 23 was issued on March 16, 2009.

The CLP meeting occurred in this quarter on March 27, 2009. The CLP was formed to provide additional communication avenues for the community and the meetings are currently being held at the GM Facility approximately every three months or more frequently if information on the project changes significantly. The CLP meeting minutes are posted on the GM website at [www.bedfordpowertraincorrectiveaction.com](http://www.bedfordpowertraincorrectiveaction.com). The next CLP meeting is scheduled for June 2009 on a date to be determined.

The Information Center located at the plant lobby is accessible by appointment through Ms. Susan Waun, GM Communications, at the project number 812-583-3753. The documents repository is no longer located at the Bedford Public Library. All data that were located at the Library repository can be found on the aforementioned web site.



## 5.0 CHANGES IN PERSONNEL DURING THE REPORTING PERIOD

A number of field personnel have been rotated in and out of the field activities.

- Dr. Mark Johnson is the new ASTDR contact for this project.

Most CRA staff and contractor operators left the Site at the end of the fourth quarter 2008 and all but a small number of CRA staff and contractors remain on site to continue necessary sampling programs, operate water treatment facilities, and provide personnel and oversight for maintenance activities through the winter and spring rainy season.

## 6.0 PROJECTED WORK FOR THE NEXT REPORTING PERIOD

Work projected for the next reporting period includes:

- Conducting a neighborhood information session in June 2009 on a date to be determined;
- Conducting a general public information session in June 2009 on a date to be determined;
- Conducting a CLP Meeting in June 2009 on a date to be determined;
- Preparing and distributing Fact Sheet 24 in the next quarter;
- Continuing the evaluation of RFI soil and groundwater data, as needed;
- Conducting groundwater sampling and groundwater gauging in the next quarter, as required under the EI CA750
- Completion of Annual Vault Report;
- Conducting the quarterly seeps and springs sampling event, as required under the SSC Work Plan and addendums;
- Maintaining temporary liner covers and runoff water collection and treatment where necessary; and
- Completing design modifications the East Plant Cover System design to address additional soil placement as needed.

**7.0 COPIES OF DAILY REPORTS, INSPECTION REPORTS,  
LABORATORY/MONITORING DATA**

Parcel 400 Area sample locations are presented on Figure 7.1. Validated sample results are presented in Table 7.1.

Packages of analytical data from creek remediation verification sampling have been submitted as they become available in the next report and will continue to be submitted during the next reporting period when or if sampling is conducted. Any other sampling data collected during the quarter will be submitted under separate cover once validation is completed.

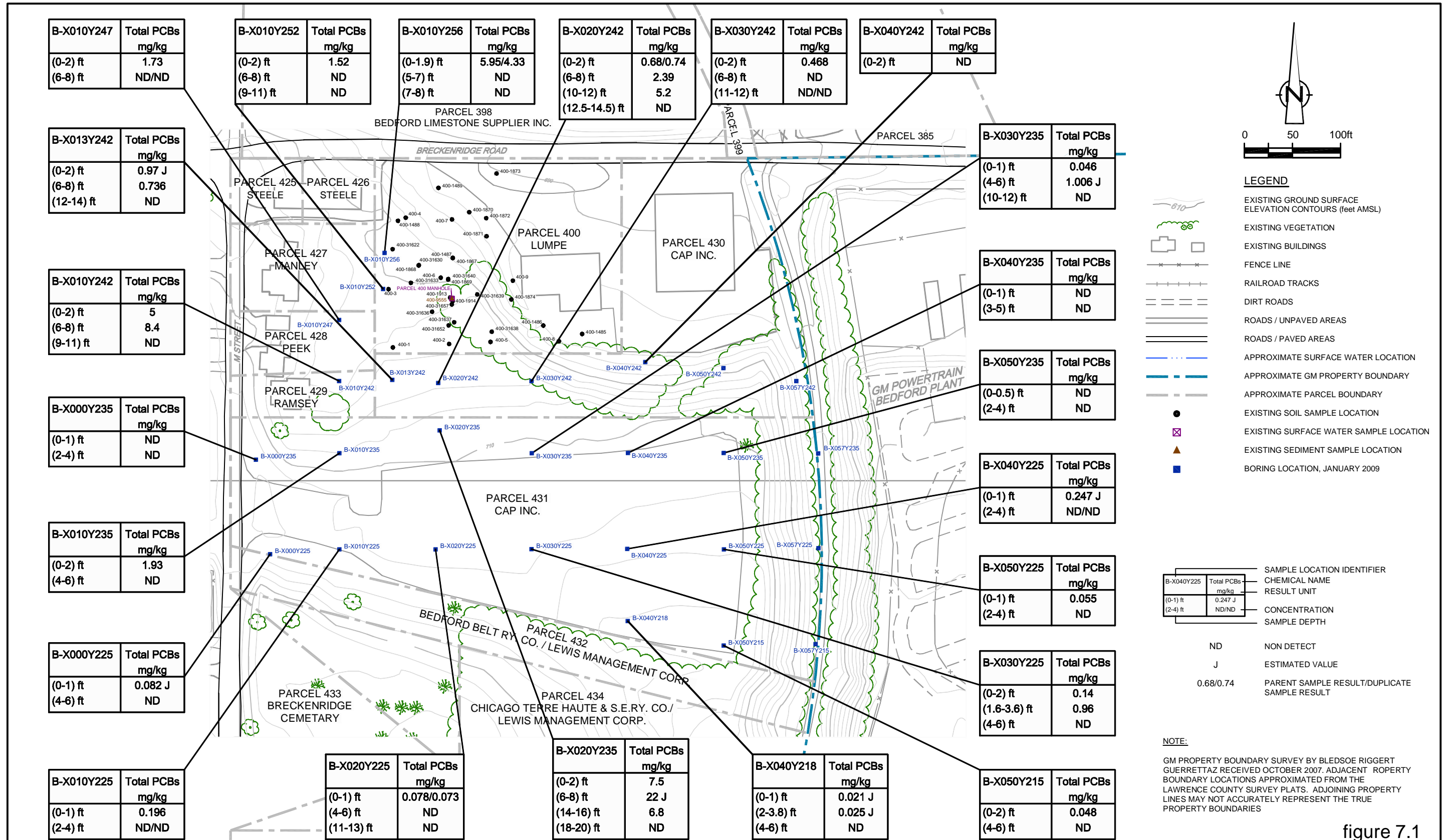


figure 7.1

**PARCEL 400 VALIDATED SAMPLE RESULTS SUMMARY  
 QUARTERLY PROGRESS REPORT #32  
 GM POWERTRAIN BEDFORD FACILITY  
 Bedford, Indiana**

SOURCE: BASE MAP COMPLETED BY AIR-LAND SURVEYS, FLINT, MI, APRIL 2001.  
 AND CRA SURVEYS 2002 - 2005



**TABLE 7.1**  
**PARCEL 400 SAMPLE RESULTS**  
**JANUARY 2009**  
**GENERAL MOTORS POWERTRAIN BEDFORD FACILITY**  
**BEDFORD, INDIANA**

Sample Area		P431	P431	P431	P431	P431	P431	P431	P431
Sample Location		B-X000Y225	B-X000Y225	B-X000Y235	B-X000Y235	B-X010Y225	B-X010Y225	B-X010Y225	B-X010Y235
Sample Identification		S-012109-DD-1583	S-012109-DD-1584	S-012109-DD-1585	S-012109-DD-1586	S-012109-DD-1580	S-012109-DD-1581	S-012109-DD-1582	S-012109-DD-1587
Sample Date		1/21/2009	1/21/2009	1/21/2009	1/21/2009	1/21/2009	1/21/2009	1/21/2009	1/21/2009
Sample Depth		(0-1) ft	(4-6) ft	(0-1) ft	(2-4) ft	(0-1) ft	(2-4) ft	(2-4) ft	(0-2) ft
Sample Type								Duplicate	
	Units								
<b>PCBs</b>									
Aroclor-1016 (PCB-1016)	mg/kg	0.047 U	0.042 U	0.041 U	0.04 U	0.038 U	0.045 U	0.045 U	0.21 U
Aroclor-1221 (PCB-1221)	mg/kg	0.047 U	0.042 U	0.041 U	0.04 U	0.038 U	0.045 U	0.045 U	0.21 U
Aroclor-1232 (PCB-1232)	mg/kg	0.047 U	0.042 U	0.041 U	0.04 U	0.038 U	0.045 U	0.045 U	0.21 U
Aroclor-1242 (PCB-1242)	mg/kg	0.047 U	0.042 U	0.041 U	0.04 U	0.038 U	0.045 U	0.045 U	0.21 U
Aroclor-1248 (PCB-1248)	mg/kg	0.042 J	0.042 U	0.041 U	0.04 U	0.15	0.045 U	0.045 U	1.4
Aroclor-1254 (PCB-1254)	mg/kg	0.047 U	0.042 U	0.041 U	0.04 U	0.038 U	0.045 U	0.045 U	0.21 U
Aroclor-1260 (PCB-1260)	mg/kg	0.04 J	0.042 U	0.041 U	0.04 U	0.046	0.045 U	0.045 U	0.53
Total PCBs	mg/kg	0.082 J	0	0	0	0.196	0	0	1.93

## Notes:

U - Not present at or above the associated value.

J - Estimated concentration.

**TABLE 7.1**  
**PARCEL 400 SAMPLE RESULTS**  
**JANUARY 2009**  
**GENERAL MOTORS POWERTRAIN BEDFORD FACILITY**  
**BEDFORD, INDIANA**

Sample Area		P431	P429	P429	P429	P428	P428	P428	P400
Sample Location		B-X010Y235	B-X010Y242	B-X010Y242	B-X010Y242	B-X010Y247	B-X010Y247	B-X010Y247	B-X010Y252
Sample Identification		S-012109-DD-1588	S-012109-DD-1589	S-012109-DD-1590	S-012109-DD-1591	S-012109-DD-1592	S-012109-DD-1593	S-012109-DD-1594	S-012209-DD-1607
Sample Date		1/21/2009	1/21/2009	1/21/2009	1/21/2009	1/21/2009	1/21/2009	1/21/2009	1/22/2009
Sample Depth		(4-6) ft	(0-2) ft	(6-8) ft	(9-11) ft	(0-2) ft	(6-8) ft	(6-8) ft	(0-2) ft
Sample Type								Duplicate	
	Units								
<b>PCBs</b>									
Aroclor-1016 (PCB-1016)	mg/kg	0.042 U	0.76 U	0.83 U	0.045 U	0.4 U	0.04 U	0.043 U	0.2 U
Aroclor-1221 (PCB-1221)	mg/kg	0.042 U	0.76 U	0.83 U	0.045 U	0.4 U	0.04 U	0.043 U	0.2 U
Aroclor-1232 (PCB-1232)	mg/kg	0.042 U	0.76 U	0.83 U	0.045 U	0.4 U	0.04 U	0.043 U	0.2 U
Aroclor-1242 (PCB-1242)	mg/kg	0.042 U	0.76 U	0.83 U	0.045 U	0.4 U	0.04 U	0.043 U	0.2 U
Aroclor-1248 (PCB-1248)	mg/kg	0.042 U	3.9	6.9	0.045 U	1.3	0.04 U	0.043 U	1.3
Aroclor-1254 (PCB-1254)	mg/kg	0.042 U	0.76 U	0.83 U	0.045 U	0.4 U	0.04 U	0.043 U	0.2 U
Aroclor-1260 (PCB-1260)	mg/kg	0.042 U	1.1	1.5	0.045 U	0.43	0.04 U	0.043 U	0.22
Total PCBs	mg/kg	0	5	8.4	0	1.73	0	0	1.52

## Notes:

U - Not present at or above the associat

J - Estimated concentration.

**TABLE 7.1**  
**PARCEL 400 SAMPLE RESULTS**  
**JANUARY 2009**  
**GENERAL MOTORS POWERTRAIN BEDFORD FACILITY**  
**BEDFORD, INDIANA**

Sample Area		P400	P400	P400	P400	P400	P400	P430	P430
Sample Location		B-X010Y252	B-X010Y252	B-X010Y256	B-X010Y256	B-X010Y256	B-X010Y256	B-X013Y242	B-X013Y242
Sample Identification		S-012209-DD-1608	S-012209-DD-1609	S-012209-DD-1605	S-012209-DD-1606	S-012209-DD-1610	S-012209-DD-1611	S-012009-DD-1558	S-012009-DD-1559
Sample Date		1/22/2009	1/22/2009	1/22/2009	1/22/2009	1/22/2009	1/22/2009	1/20/2009	1/20/2009
Sample Depth		(6-8) ft	(9-11) ft	(0-1.9) ft	(0-1.9) ft	(5-7) ft	(7-8) ft	(0-2) ft	(6-8) ft
Sample Type					Duplicate				
	Units								
<b>PCBs</b>									
Aroclor-1016 (PCB-1016)	mg/kg	0.042 U	0.042 U	0.77 U	0.45 U	0.043 U	0.044 U	0.19 U	0.077 U
Aroclor-1221 (PCB-1221)	mg/kg	0.042 U	0.042 U	0.77 U	0.45 U	0.043 U	0.044 U	0.19 U	0.077 U
Aroclor-1232 (PCB-1232)	mg/kg	0.042 U	0.042 U	0.77 U	0.45 U	0.043 U	0.044 U	0.19 U	0.077 U
Aroclor-1242 (PCB-1242)	mg/kg	0.042 U	0.042 U	0.77 U	0.45 U	0.043 U	0.044 U	0.19 U	0.077 U
Aroclor-1248 (PCB-1248)	mg/kg	0.042 U	0.042 U	5	3.5	0.043 U	0.044 U	0.79	0.65
Aroclor-1254 (PCB-1254)	mg/kg	0.042 U	0.042 U	0.77 U	0.45 U	0.043 U	0.044 U	0.19 U	0.077 U
Aroclor-1260 (PCB-1260)	mg/kg	0.042 U	0.042 U	0.95	0.83	0.043 U	0.044 U	0.18 J	0.086
Total PCBs	mg/kg	0	0	5.95	4.33	0	0	0.97 J	0.736

## Notes:

U - Not present at or above the associat

J - Estimated concentration.

**TABLE 7.1**  
**PARCEL 400 SAMPLE RESULTS**  
**JANUARY 2009**  
**GENERAL MOTORS POWERTRAIN BEDFORD FACILITY**  
**BEDFORD, INDIANA**

Sample Area		P430	P431	P431	P431	P431	P431	P431	P431	
Sample Location		B-X013Y242	B-X020Y225	B-X020Y225	B-X020Y225	B-X020Y225	B-X020Y235	B-X020Y235	B-X020Y235	
Sample Identification		S-012009-DD-1560	S-012009-DD-1554	S-012009-DD-1555	S-012009-DD-1556	S-012009-DD-1557	S-012009-DD-1566	S-012009-DD-1567	S-012009-DD-1568	
Sample Date		1/20/2009	1/20/2009	1/20/2009	1/20/2009	1/20/2009	1/20/2009	1/20/2009	1/20/2009	
Sample Depth		(12-14) ft	(0-1) ft	(0-1) ft	(4-6) ft	(11-13) ft	(0-2) ft	(6-8) ft	(14-16) ft	
Sample Type				Duplicate						
	Units									
<b>PCBs</b>										
Aroclor-1016 (PCB-1016)	mg/kg	0.042 U	0.034 U	0.034 U	0.043 U	0.043 U	0.83 U	3.7 U	2 U	
Aroclor-1221 (PCB-1221)	mg/kg	0.042 U	0.034 U	0.034 U	0.043 U	0.043 U	0.83 U	3.7 U	2 U	
Aroclor-1232 (PCB-1232)	mg/kg	0.042 U	0.034 U	0.034 U	0.043 U	0.043 U	0.83 U	3.7 U	2 U	
Aroclor-1242 (PCB-1242)	mg/kg	0.042 U	0.034 U	0.034 U	0.043 U	0.043 U	0.83 U	3.7 U	2 U	
Aroclor-1248 (PCB-1248)	mg/kg	0.042 U	0.078	0.073	0.043 U	0.043 U	6.3	19	6.8	
Aroclor-1254 (PCB-1254)	mg/kg	0.042 U	0.034 U	0.034 U	0.043 U	0.043 U	0.83 U	3.7 U	2 U	
Aroclor-1260 (PCB-1260)	mg/kg	0.042 U	0.034 U	0.034 U	0.043 U	0.043 U	1.2	3 J	2 U	
Total PCBs	mg/kg	0	0.078	0.073	0	0	7.5	22 J	6.8	

## Notes:

U - Not present at or above the associat

J - Estimated concentration.



**TABLE 7.1**  
**PARCEL 400 SAMPLE RESULTS**  
**JANUARY 2009**  
**GENERAL MOTORS POWERTRAIN BEDFORD FACILITY**  
**BEDFORD, INDIANA**

Sample Area		P431	P430	P430	P430	P430	P430	P431	P431
Sample Location		B-X020Y235	B-X020Y242	B-X020Y242	B-X020Y242	B-X020Y242	B-X020Y242	B-X030Y225	B-X030Y225
Sample Identification		S-012009-DD-1569	S-012009-DD-1561	S-012009-DD-1562	S-012009-DD-1563	S-012009-DD-1564	S-012009-DD-1565	S-012009-DD-1551	S-012009-DD-1552
Sample Date		1/20/2009	1/20/2009	1/20/2009	1/20/2009	1/20/2009	1/20/2009	1/20/2009	1/20/2009
Sample Depth		(18-20) ft	(0-2) ft	(0-2) ft	(6-8) ft	(10-12) ft	(12.5-14.5) ft	(0-2) ft	(1.6-3.6) ft
Sample Type				Duplicate					
	Units								
<b>PCBs</b>									
Aroclor-1016 (PCB-1016)	mg/kg	0.042 U	0.075 U	0.08 U	0.2 U	0.45 U	0.042 U	0.035 U	0.21 U
Aroclor-1221 (PCB-1221)	mg/kg	0.042 U	0.075 U	0.08 U	0.2 U	0.45 U	0.042 U	0.035 U	0.21 U
Aroclor-1232 (PCB-1232)	mg/kg	0.042 U	0.075 U	0.08 U	0.2 U	0.45 U	0.042 U	0.035 U	0.21 U
Aroclor-1242 (PCB-1242)	mg/kg	0.042 U	0.075 U	0.08 U	0.2 U	0.45 U	0.042 U	0.035 U	0.21 U
Aroclor-1248 (PCB-1248)	mg/kg	0.042 U	0.55	0.58	2.1	4.4	0.042 U	0.14	0.96
Aroclor-1254 (PCB-1254)	mg/kg	0.042 U	0.075 U	0.08 U	0.2 U	0.45 U	0.042 U	0.035 U	0.21 U
Aroclor-1260 (PCB-1260)	mg/kg	0.042 U	0.13	0.16	0.29	0.8	0.042 U	0.035 U	0.21 U
Total PCBs	mg/kg	0	0.68	0.74	2.39	5.2	0	0.14	0.96

## Notes:

U - Not present at or above the associat

J - Estimated concentration.

**TABLE 7.1**  
**PARCEL 400 SAMPLE RESULTS**  
**JANUARY 2009**  
**GENERAL MOTORS POWERTRAIN BEDFORD FACILITY**  
**BEDFORD, INDIANA**

Sample Area		P431	P431	P431	P431	P430	P430	P430	P430
Sample Location		B-X030Y225	B-X030Y235	B-X030Y235	B-X030Y235	B-X030Y242	B-X030Y242	B-X030Y242	B-X030Y242
Sample Identification		S-012009-DD-1553	S-011909-DD-1548	S-011909-DD-1549	S-011909-DD-1550	S-012009-DD-1570	S-012009-DD-1571	S-012009-DD-1572	S-012009-DD-1573
Sample Date		1/20/2009	1/19/2009	1/19/2009	1/19/2009	1/20/2009	1/20/2009	1/20/2009	1/20/2009
Sample Depth		(4-6) ft	(0-1) ft	(4-6) ft	(10-12) ft	(0-2) ft	(6-8) ft	(11-12) ft	(11-12) ft
Sample Type									Duplicate
	Units								
<b>PCBs</b>									
Aroclor-1016 (PCB-1016)	mg/kg	0.044 U	0.039 U	0.083 U	0.044 U	0.039 U	0.041 U	0.044 U	0.043 U
Aroclor-1221 (PCB-1221)	mg/kg	0.044 U	0.039 U	0.083 U	0.044 U	0.039 U	0.041 U	0.044 U	0.043 U
Aroclor-1232 (PCB-1232)	mg/kg	0.044 U	0.039 U	0.083 U	0.044 U	0.039 U	0.041 U	0.044 U	0.043 U
Aroclor-1242 (PCB-1242)	mg/kg	0.044 U	0.039 U	0.083 U	0.044 U	0.039 U	0.041 U	0.044 U	0.043 U
Aroclor-1248 (PCB-1248)	mg/kg	0.044 U	0.046	0.96	0.044 U	0.38	0.041 U	0.044 U	0.043 U
Aroclor-1254 (PCB-1254)	mg/kg	0.044 U	0.039 U	0.083 U	0.044 U	0.039 U	0.041 U	0.044 U	0.043 U
Aroclor-1260 (PCB-1260)	mg/kg	0.044 U	0.039 U	0.046 J	0.044 U	0.088	0.041 U	0.044 U	0.043 U
Total PCBs	mg/kg	0	0.046	1.006 J	0	0.468	0	0	0

## Notes:

U - Not present at or above the associat

J - Estimated concentration.

**TABLE 7.1**  
**PARCEL 400 SAMPLE RESULTS**  
**JANUARY 2009**  
**GENERAL MOTORS POWERTRAIN BEDFORD FACILITY**  
**BEDFORD, INDIANA**

Sample Area		P431	P431	P431	P431	P431	P431	P431	P431
Sample Location		B-X040Y218	B-X040Y218	B-X040Y218	B-X040Y225	B-X040Y225	B-X040Y225	B-X040Y235	B-X040Y235
Sample Identification		S-011909-DD-1543	S-011909-DD-1544	S-011909-DD-1545	S-011909-DD-1540	S-011909-DD-1541	S-011909-DD-1542	S-011909-DD-1546	S-011909-DD-1547
Sample Date		1/19/2009	1/19/2009	1/19/2009	1/19/2009	1/19/2009	1/19/2009	1/19/2009	1/19/2009
Sample Depth		(0-1) ft	(2-3.8) ft	(4-6) ft	(0-1) ft	(2-4) ft	(2-4) ft	(0-1) ft	(3-5) ft
Sample Type							Duplicate		
	Units								
<b>PCBs</b>									
Aroclor-1016 (PCB-1016)	mg/kg	0.039 U	0.038 U	0.043 U	0.038 U	0.04 U	0.038 U	0.038 U	0.041 U
Aroclor-1221 (PCB-1221)	mg/kg	0.039 U	0.038 U	0.043 U	0.038 U	0.04 U	0.038 U	0.038 U	0.041 U
Aroclor-1232 (PCB-1232)	mg/kg	0.039 U	0.038 U	0.043 U	0.038 U	0.04 U	0.038 U	0.038 U	0.041 U
Aroclor-1242 (PCB-1242)	mg/kg	0.039 U	0.038 U	0.043 U	0.038 U	0.04 U	0.038 U	0.038 U	0.041 U
Aroclor-1248 (PCB-1248)	mg/kg	0.021 J	0.025 J	0.043 U	0.22	0.04 U	0.038 U	0.038 U	0.041 U
Aroclor-1254 (PCB-1254)	mg/kg	0.039 U	0.038 U	0.043 U	0.038 U	0.04 U	0.038 U	0.038 U	0.041 U
Aroclor-1260 (PCB-1260)	mg/kg	0.039 U	0.038 U	0.043 U	0.027 J	0.04 U	0.038 U	0.038 U	0.041 U
Total PCBs	mg/kg	0.021 J	0.025 J	0	0.247 J	0	0	0	0

## Notes:

U - Not present at or above the associat

J - Estimated concentration.

**TABLE 7.1**  
**PARCEL 400 SAMPLE RESULTS**  
**JANUARY 2009**  
**GENERAL MOTORS POWERTRAIN BEDFORD FACILITY**  
**BEDFORD, INDIANA**

Sample Area		P430	P431	P431	P431	P431	P431	P431
Sample Location		B-X040Y242	B-X050Y215	B-X050Y215	B-X050Y225	B-X050Y225	B-X050Y235	B-X050Y235
Sample Identification		S-012109-DD-1595	S-012009-DD-1574	S-012009-DD-1575	S-012009-DD-1576	S-012009-DD-1577	S-012009-DD-1578	S-012009-DD-1579
Sample Date		1/21/2009	1/20/2009	1/20/2009	1/20/2009	1/20/2009	1/20/2009	1/20/2009
Sample Depth		(0-2) ft	(0-2) ft	(4-6) ft	(0-1) ft	(2-4) ft	(0-0.5) ft	(2-4) ft
Sample Type								
	<i>Units</i>							
<b>PCBs</b>								
Aroclor-1016 (PCB-1016)	mg/kg	0.044 U	0.046 U	0.039 U	0.04 U	0.04 U	0.045 U	0.041 U
Aroclor-1221 (PCB-1221)	mg/kg	0.044 U	0.046 U	0.039 U	0.04 U	0.04 U	0.045 U	0.041 U
Aroclor-1232 (PCB-1232)	mg/kg	0.044 U	0.046 U	0.039 U	0.04 U	0.04 U	0.045 U	0.041 U
Aroclor-1242 (PCB-1242)	mg/kg	0.044 U	0.046 U	0.039 U	0.04 U	0.04 U	0.045 U	0.041 U
Aroclor-1248 (PCB-1248)	mg/kg	0.044 U	0.048	0.039 U	0.055	0.04 U	0.045 U	0.041 U
Aroclor-1254 (PCB-1254)	mg/kg	0.044 U	0.046 U	0.039 U	0.04 U	0.04 U	0.045 U	0.041 U
Aroclor-1260 (PCB-1260)	mg/kg	0.044 U	0.046 U	0.039 U	0.04 U	0.04 U	0.045 U	0.041 U
Total PCBs	mg/kg	0	0.048	0	0.055	0	0	0

## Notes:

U - Not present at or above the associated

J - Estimated concentration.