



Public Information Session June 18th, 2014



- Facility located on 152.5 acres and is approximately 1,000,000 square feet of manufacturing footprint
- Approximately 450 employees



- Comprehensive Environmental Response, Compensation, and Liability Act (CERCLA) Removal Action (RA)
 - Bailey's Branch and Pleasant Run PCB cleanup of creek sediments and floodplain soil
 - RA Elements:
 - Control of impacted springs and seeps along creeks; and
 - Removal of floodplain soil to 1.8 ppm and sediment to 1 ppm in the creek (removal is complete)
 - Remedy for large spring on Baileys Branch is complete – monitoring continues
 - Restoration substantially completed in December 2013



REMOVAL ACTION STATUS

G M C E T B E D F O R D F A C I L I T Y , B E D F O R D , I N D I A N A

**PARCEL 40/81
RESTORATION**

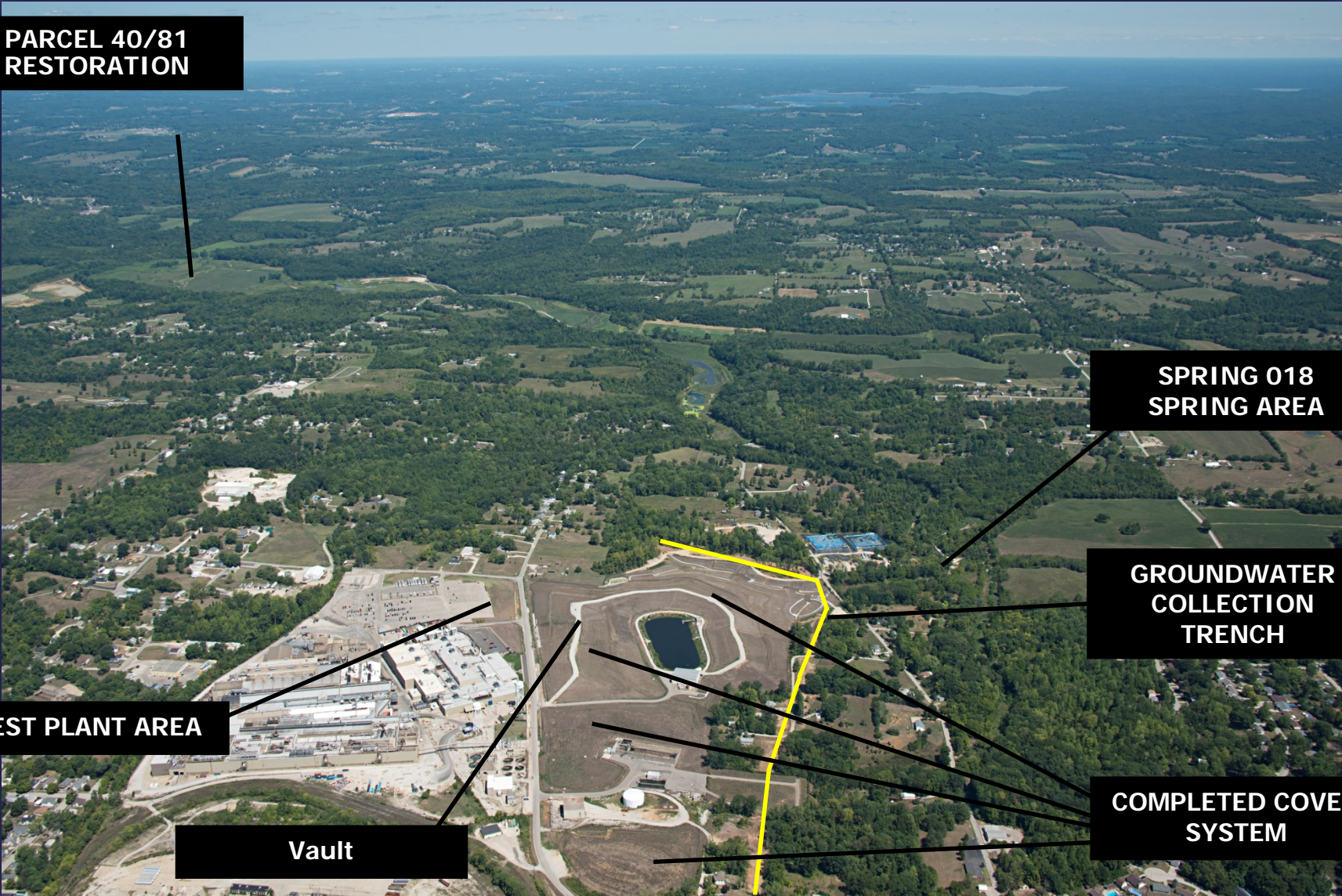
**SPRING 018
SPRING AREA**

**GROUNDWATER
COLLECTION
TRENCH**

WEST PLANT AREA

Vault

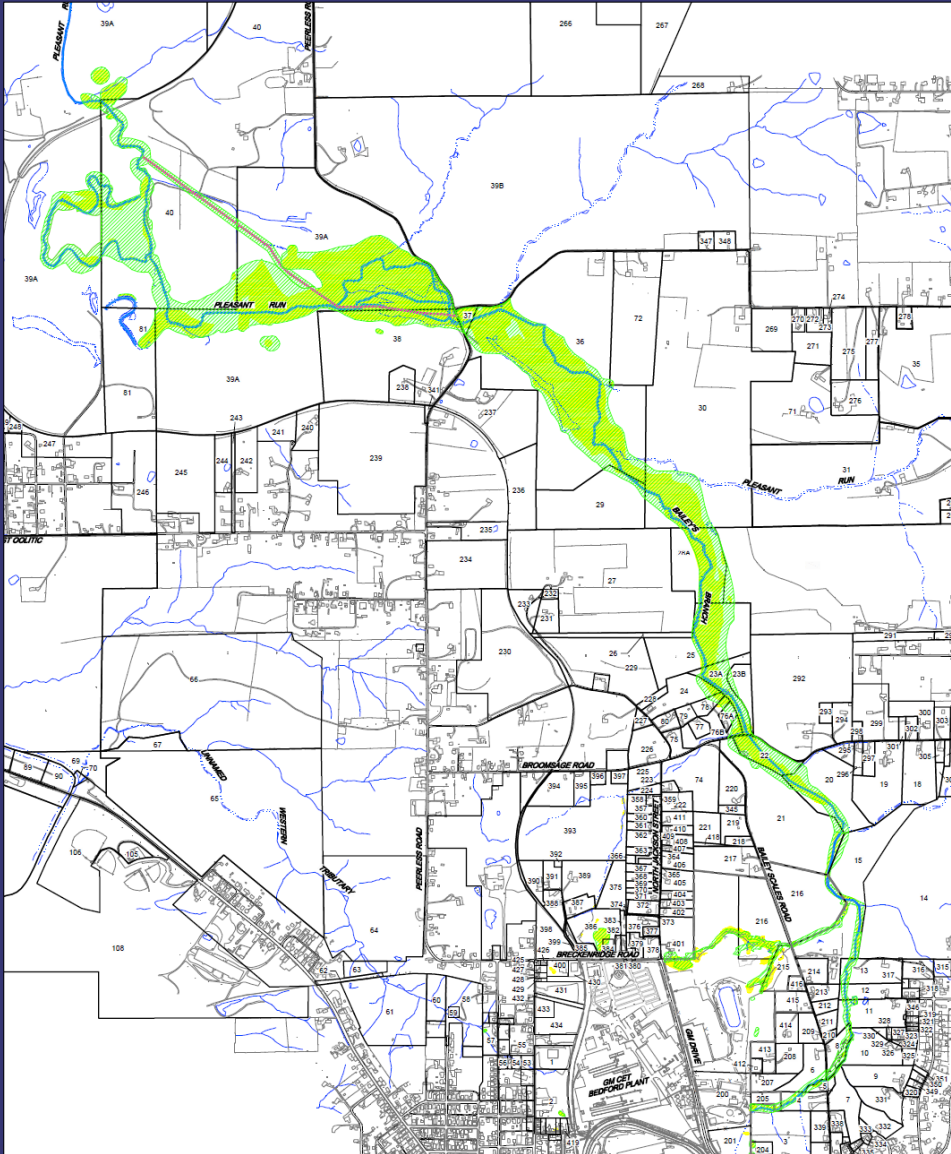
**COMPLETED COVER
SYSTEM**





REMOVAL ACTION STATUS

G M C E T B E D F O R D F A C I L I T Y , B E D F O R D , I N D I A N A



- Planted trees along fence where borrow road crossed onto property





RESTORATION OF PARCELS WEST OF PEERLESS ROAD

G M C E T B E D F O R D F A C I L I T Y , B E D F O R D , I N D I A N A

- Restoration began on Parcels 40 and 81 in June 2013
- Weather delayed the completion of remaining GM and RACER Trust restoration
- GM is working with the property owner to complete the balance of the restoration on Parcel 40





PARCEL 40 CREEK RESTORATION

G M C E T B E D F O R D F A C I L I T Y , B E D F O R D , I N D I A N A





PARCEL 40 FORMER DC RESTORATION

G M C E T B E D F O R D F A C I L I T Y , B E D F O R D , I N D I A N A





SPRING 18 REMOVAL ACTION MONITORING

G M C E T B E D F O R D F A C I L I T Y , B E D F O R D , I N D I A N A

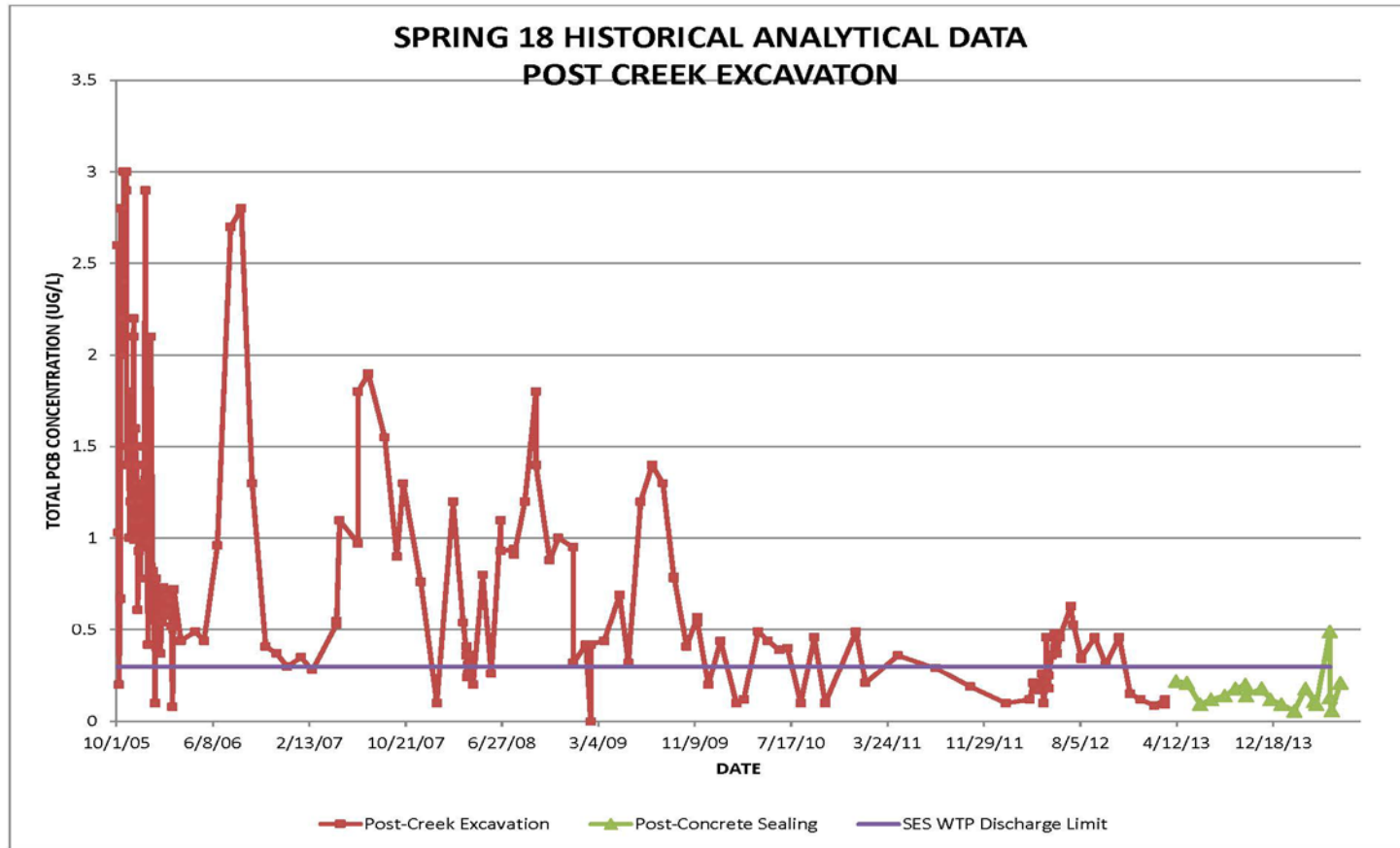
- Submitted Concrete Sealing Construction Certification Report
- U.S.EPA agreed to discontinue collection and treatment of Spring 18 water on June 19, 2013
- Contingency treatment can be brought in, if needed
- Monthly monitoring continues
- Quarterly opportunistic monitoring continues
- 12-month rolling average = 0.16 ug/L





SPRING 18 REMOVAL ACTION MONITORING

G M C E T B E D F O R D F A C I L I T Y , B E D F O R D , I N D I A N A



- Demobilized WTP and modutanks formerly used for treatment of Spring 18 water
- Collected soil samples beneath the former footprint of the modutanks
- Established contract with Rain-for-Rent to mobilize a temporary WTP, as needed

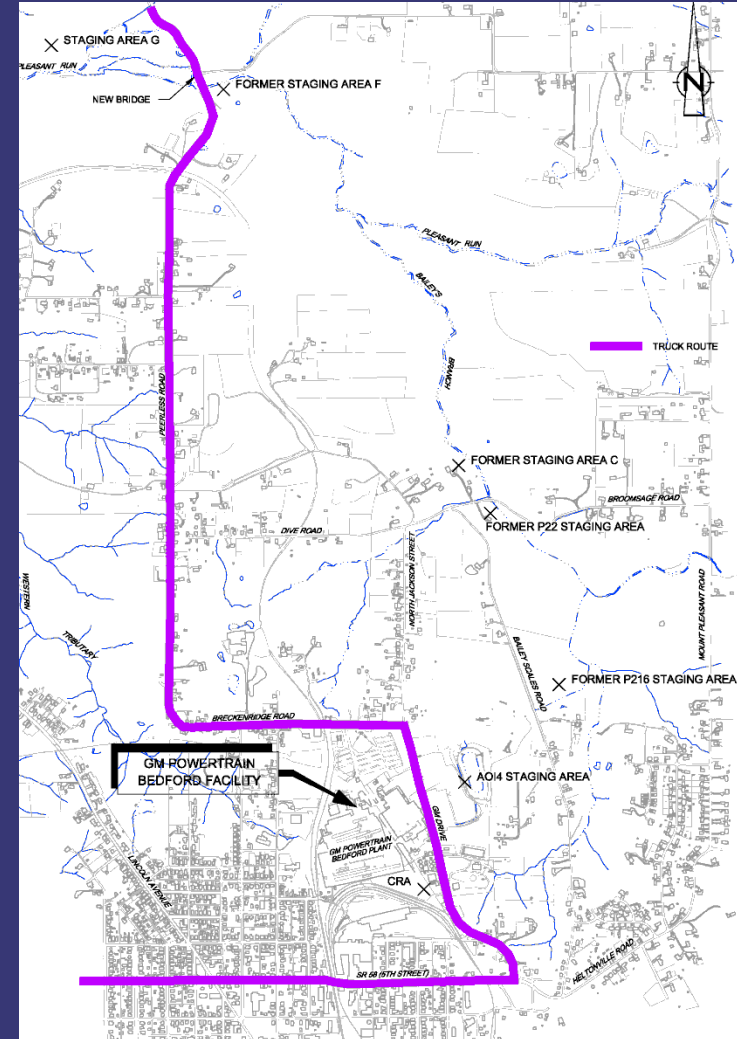




ROAD REPAIR

G M C E T B E D F O R D F A C I L I T Y , B E D F O R D , I N D I A N A

- Repaired west shoulder along Peerless Road, south of the bridge
- GM will complete a final inspection of the road surface along the haul routes later this year to determine if any additional repairs are needed.





CREEK RESTORATION UPDATE

G M C E T B E D F O R D F A C I L I T Y , B E D F O R D , I N D I A N A

MAY 6, 2000



OCT 7, 2003



JUN 5, 2014



APR 27, 2004



DEC 3, 2007



Looking west from Bailey Scales Road



CREEK RESTORATION

G M C E T B E D F O R D F A C I L I T Y , B E D F O R D , I N D I A N A

JUN 18, 2004



DEC 3, 2007



MAY 19, 2011



JUN 5, 2014



Restoration north of Broomsage Road



RESTORATION OF PARCELS WEST OF PEERLESS ROAD

G M C E T B E D F O R D F A C I L I T Y , B E D F O R D , I N D I A N A

MAY 11, 2006



OCT 9, 2007



MAR 19, 2009



JUN 5, 2014





- RCRA Corrective Action
 - Previously conducted by the old General Motors Corporation in accordance with a performance-based agreement with the U.S. EPA Region V. The agreement was signed on March 20, 2001 and amended October 1, 2002, March 29, 2008, and May 9, 2008.
 - GM LLC currently in discussion with USEPA on an Order that will replace the Agreement between GM LLC and USEPA for those areas which GM LLC is responsible.



EAST/WEST PLANT COVER SYSTEM MAINTENANCE

G M C E T B E D F O R D F A C I L I T Y , B E D F O R D , I N D I A N A

- Mowed cover system to prevent establishment of volunteer woody vegetation, control weeds, allow for surface inspection
- Applied herbicide in April 2014
- Over seeded barren areas of the cover system in May 2014
- Continue to monitor cover system for vegetative growth and erosion





VAULT OPERATIONS AND MAINTENANCE

G M C E T B E D F O R D F A C I L I T Y , B E D F O R D , I N D I A N A

- Continued to monitor leak detection system and leachate collection systems





SSC OPERATION AND MAINTENANCE

G M C E T B E D F O R D F A C I L I T Y , B E D F O R D , I N D I A N A

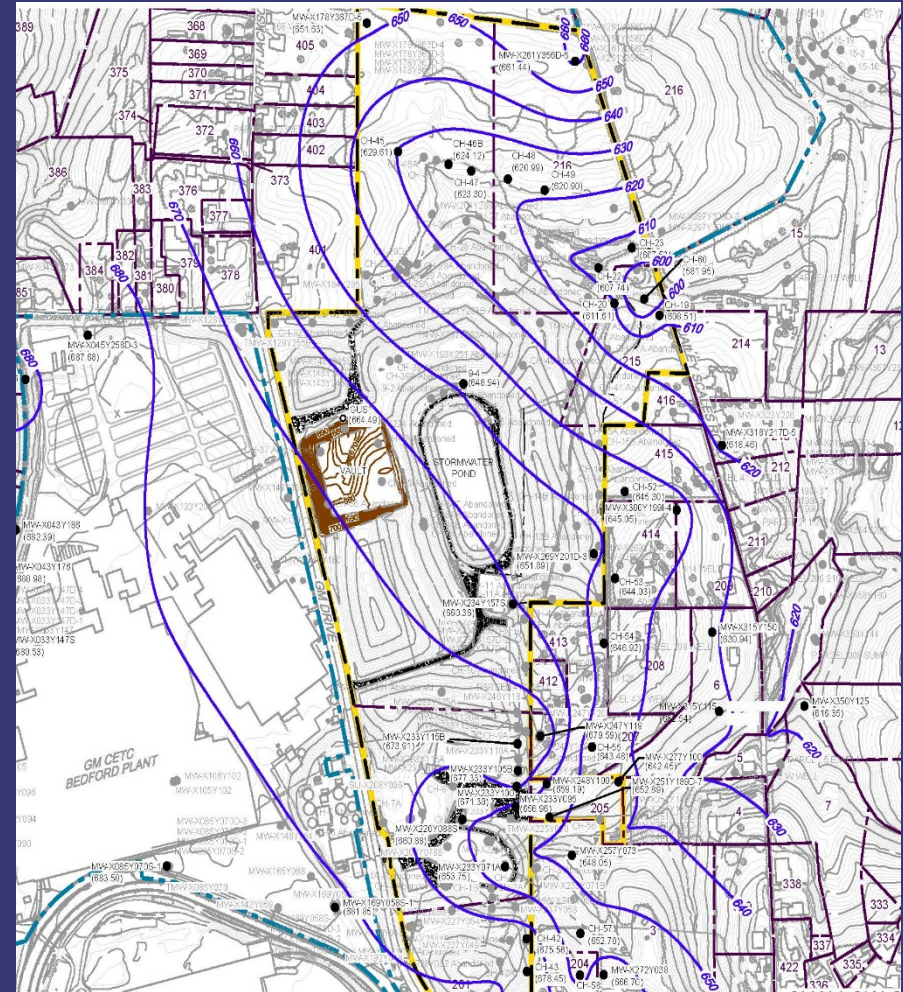
- Continued to operate SSC system
- Installed backup generator for Wet Well #1, Wet Well #2, and Lift Station
- Repaired Astra sand airlift assembly
- Conducted treatment system maintenance including carbon and sand media change





G M C E T B E D F O R D F A C I L I T Y , B E D F O R D , I N D I A N A

- EI CA750 sampling event conducted June 2013, October 2013, and May 2014
- Wells currently and previously owned by RACER Trust have been removed from the sampling network with agreement from U.S.EPA
- Groundwater elevations appear to be stable under the Cover System





HOUSE DEMOLITION

G M C E T B E D F O R D F A C I L I T Y , B E D F O R D , I N D I A N A

- GM purchased houses along the groundwater collection trench alignment
- Houses in poor condition were demolished
- Motion put before and approved by Bedford City Council to vacate Barlow Lane in advance of trench installation

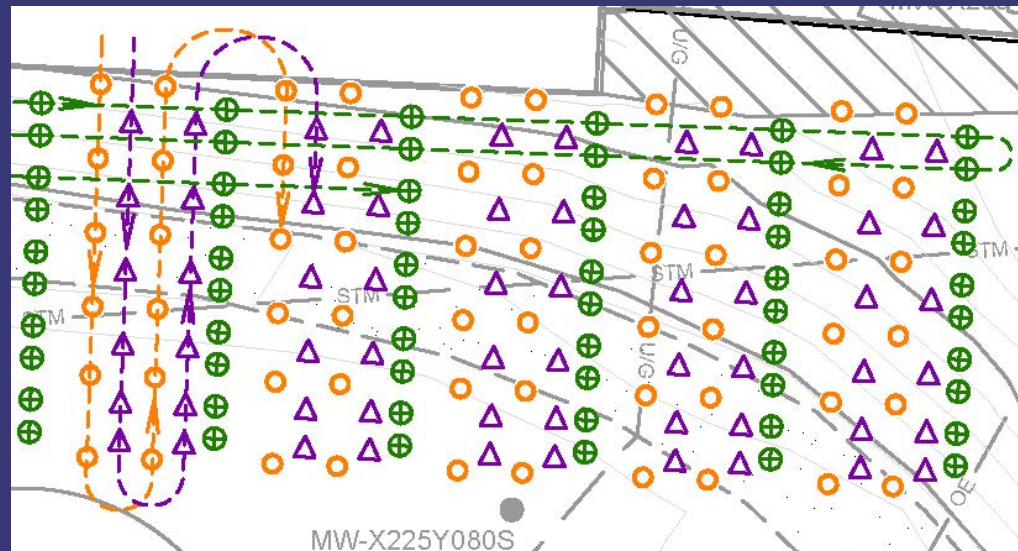




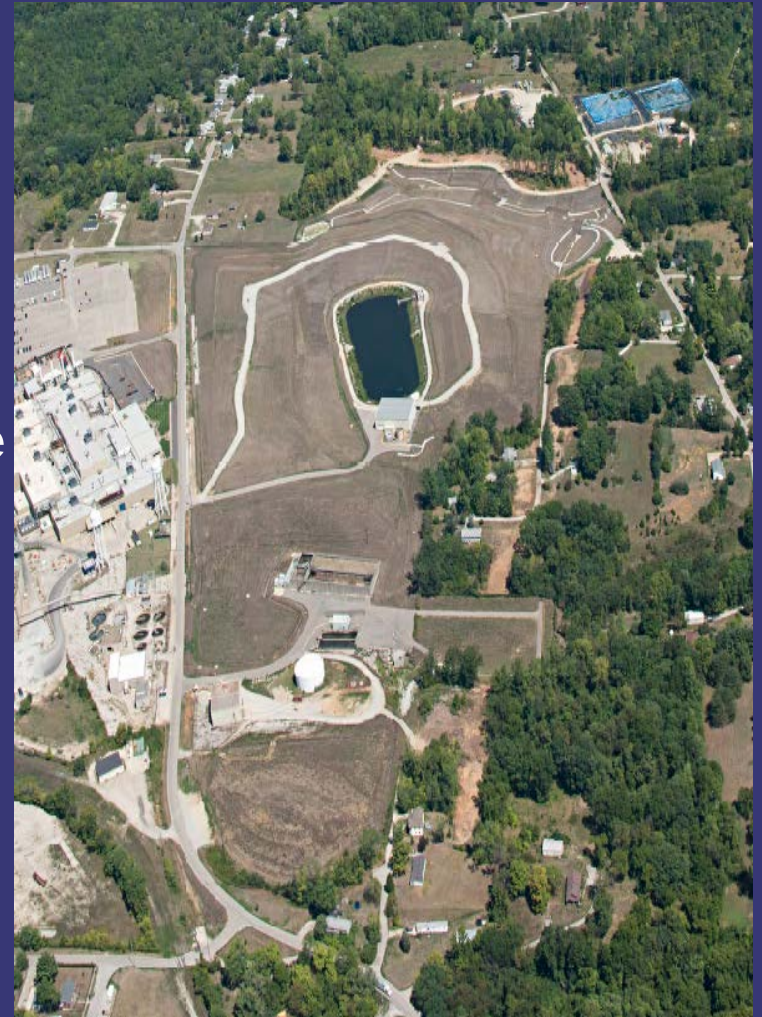
UPCOMING ACTIVITIES FOR 2014

- Surface Soil Sampling
- East/West Plant Maintenance
- EI CA750 Monitoring
- AOI 8 NAPL Extraction Plan and Implementation
- Parcel 400 Area Removal (tentative)
- Pilot Perimeter Groundwater Trench Collection System Design and Installation
- Spring 18 Monitoring

- As a final sampling effort prior to preparing the Investigation Report, incremental surface soil sampling will be conducted in select areas of the East Plant and West Plant Areas
- Sampling will target areas:
 - Not covered by East/West Plant Cover System
 - Not currently paved with hard surface maintained by Plant



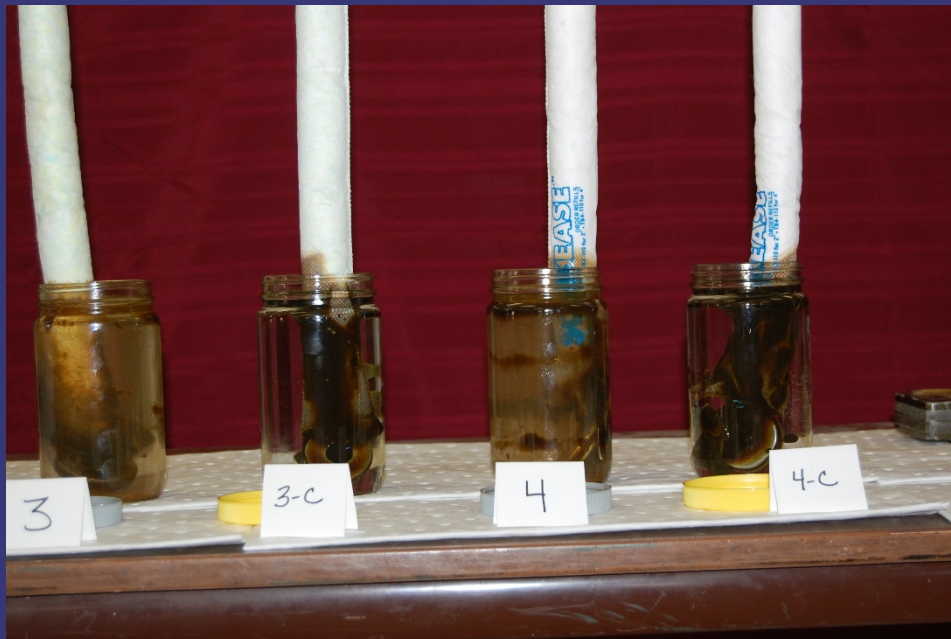
- Cover system maintenance underway to ensure well-established grass growth
- Continue to monitor Vault leak detection system and leachate collection system
- Continue to operate the Site Source Control (groundwater collection) System
- Most of the cover system seeded in native grasses
- The northwest portion of the cover system includes wildflowers



- First 2014 EI CA750 groundwater sampling event conducted May 2014
- Second 2014 event scheduled for November 2014
- Monitoring will continue under this plan until a long term groundwater monitoring plan is in place
- Periodically re-assess the frequency of monitoring and the monitoring network



- Design oil recovery system for a small area of bedrock on the facility property following review of data collected through 2014
- Implement recovery system





PILOT PERIMETER GROUNDWATER TRENCH COLLECTION SYSTEM

G M C E T B E D F O R D F A C I L I T Y , B E D F O R D , I N D I A N A

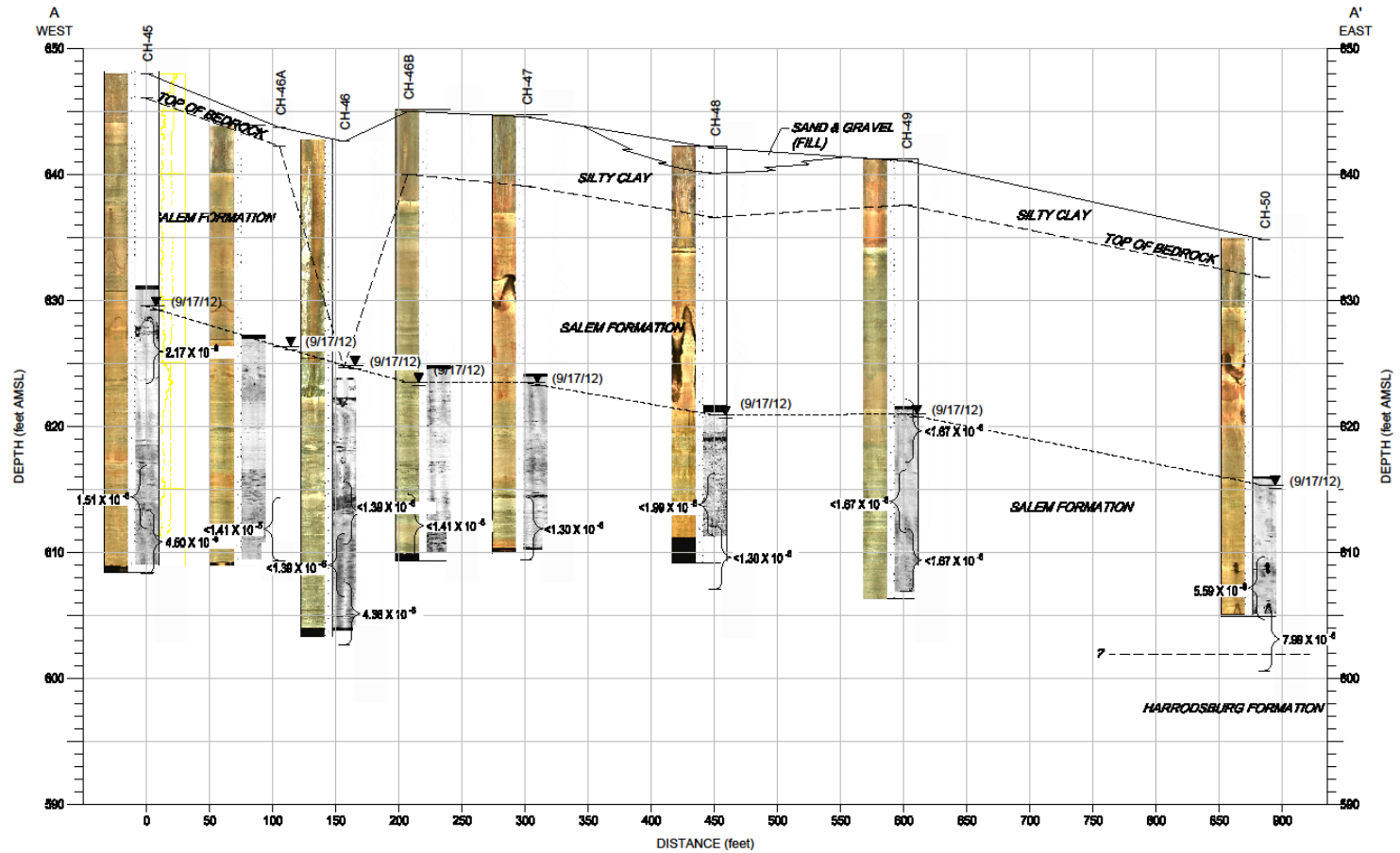
- Submit the design for the first phase (pilot) of the perimeter groundwater trench collection system
 - Construct the pilot perimeter trench in 2015
 - Gain experience from completion of pilot trench to facilitate completion of full trench design





PILOT PERIMETER GROUNDWATER TRENCH COLLECTION SYSTEM

G M C E T B E D F O R D F A C I L I T Y , B E D F O R D , I N D I A N A



- Continue to collect monthly samples from Spring 18





- Community meetings have been held on a regular basis, currently meeting twice/year
 - Meetings will continue to be announced in the Bedford Times Mail
 - Presentations have been and will continue to be posted to the website and the library
 - People can always call Katie Kamm with questions: (812) 277-8954
- A CLP Meeting was held today
- Information from the presentations and meeting minutes are posted to the website



G M C E T B E D F O R D F A C I L I T Y , B E D F O R D , I N D I A N A

- Project website at:
<http://www.BedfordPowertrainCorrectiveAction.com>
- Quarterly Community Meetings are available on the website
- All final approved documents can be found on the project website
- Community Liaison Panel (CLP) – members listed in minutes on website
- Periodic information sessions – next meeting likely to be held in late 2014.
- Periodic Project Fact Sheets (thirty-eight issued to date)
- Project Questions contact Katie Kamm: (812) 277-8954