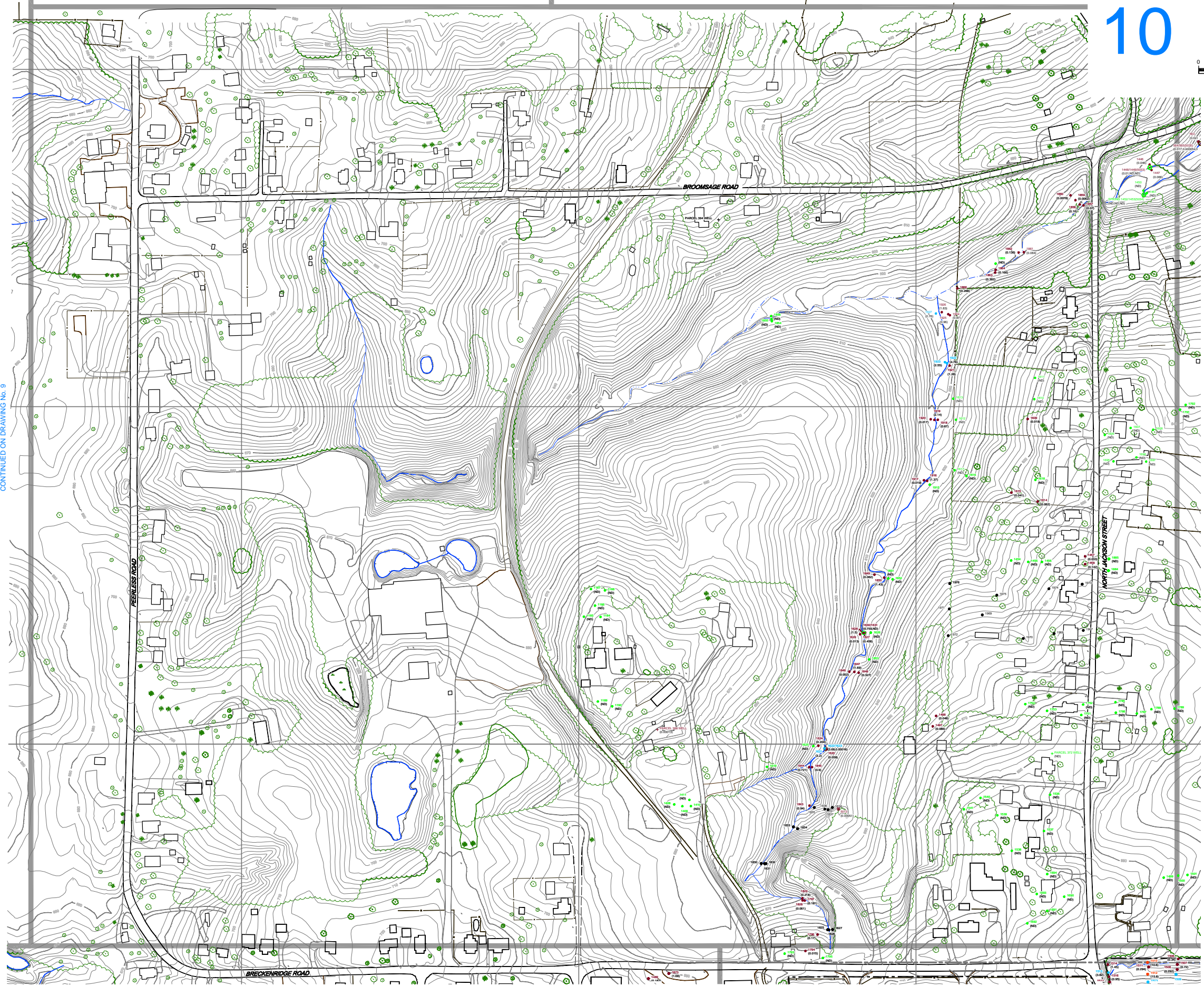
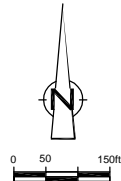


CONTINUED ON DRAWING No. 4A

# 10



CONTINUED ON DRAWING No. 9

CONTINUED ON DRAWING No. 3B

CONTINUED ON DRAWING No. 3A

CONTINUED ON DRAWING No. 8

CONTINUED ON DRAWING No. 1

NOTE:  
VALIDATED DATA FOR SAMPLING ACTIVITY UP TO JUNE 11, 2002.  
DRAWING SUBJECT TO REVISION.

NO	Revision	Date	Initial

**LEGEND**

	EXISTING GROUND SURFACE ELEVATION CONTOURS (feet AMSL)		SURFACE WATER SAMPLE LOCATION AND RESULT (0.0000)
	EXISTING VEGETATION		VEGETATION SAMPLE LOCATION AND RESULT (ND)
	EXISTING BUILDINGS		HIGH FLOW SAMPLE LOCATION AND RESULT (5000)
	FENCE LINE		SEEP LOCATION OF OBSERVED SEEP (SEEP_001)
	RAILROAD TRACKS		SPRING LOCATION OF OBSERVED SPRING (SPRING_001)
	DIRT ROADS		LOCATION OF OBSERVED SHEEN (SHEEN_001)
	ROADS / UNPAVED AREAS		ROCK CHIP SAMPLE LOCATION AND RESULT (1305)
	ROADS / PAVED AREAS		WIPE SAMPLE LOCATION AND RESULT (ND)
	APPROXIMATE GM PROPERTY BOUNDARY		WELL LOCATION (WELL_001)
	APPROXIMATE STUDY AREA BOUNDARY		PROPERTY CORNER MONUMENT (ND)
	APPROXIMATE SURFACE WATER LOCATION		INDICATES NON-DETECT SAMPLE RESULT (NS)
	RED INDICATES SOIL SAMPLE RESULT EQUAL TO OR GREATER THAN 50 PPM (2002)		INDICATES NON-DETECT SAMPLE RESULT (NS)
	ORANGE INDICATES SOIL SAMPLE RESULT EQUAL TO OR GREATER THAN 10 PPM AND LESS THAN 50 PPM (2002)		INDICATES NON-DETECT SAMPLE RESULT (NS)
	BLUE INDICATES SOIL SAMPLE RESULT EQUAL TO OR GREATER THAN 2.2 PPM AND LESS THAN 10 PPM (2002)		INDICATES NON-DETECT SAMPLE RESULT (NS)
	INDICATES SOIL SAMPLE RESULT LESS THAN 2.2 PPM (2002)		INDICATES NON-DETECT SAMPLE RESULT (NS)
	BROWN INDICATES DETECTED SOIL SAMPLE RESULT LESS THAN 2.2 PPM (2002)		INDICATES NON-DETECT SAMPLE RESULT (NS)
	GREEN INDICATES NO PCBs DETECTED AT SOIL SAMPLE LOCATION (2002)		INDICATES NON-DETECT SAMPLE RESULT (NS)
	INDICATES NO DATA		INDICATES NON-DETECT SAMPLE RESULT (NS)
	SOIL SAMPLE LOCATION AND IDENTIFIER (OCTOBER 2001)		INDICATES NON-DETECT SAMPLE RESULT (NS)
	TOTAL AROCLORS (PPM)		INDICATES NON-DETECT SAMPLE RESULT (NS)
	TOTAL AROCLORS AT SURFACE (PPM)		INDICATES NON-DETECT SAMPLE RESULT (NS)
	TOTAL AROCLORS AT SECOND DEPTH (PPM)		INDICATES NON-DETECT SAMPLE RESULT (NS)
	TOTAL AROCLORS AT THIRD DEPTH (PPM)		INDICATES NON-DETECT SAMPLE RESULT (NS)
	COLOR CORRESPONDS TO CONCENTRATION AT SURFACE		INDICATES NON-DETECT SAMPLE RESULT (NS)
	COLOR CORRESPONDS TO CONCENTRATION AT SECOND DEPTH		INDICATES NON-DETECT SAMPLE RESULT (NS)
	COLOR CORRESPONDS TO CONCENTRATION AT THIRD DEPTH		INDICATES NON-DETECT SAMPLE RESULT (NS)
	DENOTES SURFACE SAMPLE (0 - 0.33 feet BGS)		INDICATES NON-DETECT SAMPLE RESULT (NS)
	DENOTES SURFACE SAMPLE (0 - 0.33 feet BGS) AND ONE SAMPLE AT DEPTH (0.33 - 2 feet BGS MAXIMUM)		INDICATES NON-DETECT SAMPLE RESULT (NS)
	DENOTES SURFACE SAMPLE (0 - 0.33 feet BGS) AND TWO SAMPLES AT DEPTH (0.33 - 2 feet BGS MAXIMUM)		INDICATES NON-DETECT SAMPLE RESULT (NS)
	SEDIMENT SAMPLE IDENTIFICATION		INDICATES NON-DETECT SAMPLE RESULT (NS)
	SURFACE WATER SAMPLE IDENTIFICATION		INDICATES NON-DETECT SAMPLE RESULT (NS)
	TOTAL AROCLORS IN SURFACE WATER SAMPLE (PPM)		INDICATES NON-DETECT SAMPLE RESULT (NS)
	TOTAL AROCLORS IN SEDIMENT SAMPLE (PPM)		INDICATES NON-DETECT SAMPLE RESULT (NS)
	COLOR CORRESPONDS TO CONCENTRATION IN SEDIMENT SAMPLE		INDICATES NON-DETECT SAMPLE RESULT (NS)
	COLOR CORRESPONDS TO CONCENTRATION IN SURFACE WATER SAMPLE		INDICATES NON-DETECT SAMPLE RESULT (NS)
	SEDIMENT SAMPLE LOCATION AND RESULT		INDICATES NON-DETECT SAMPLE RESULT (NS)

**SCALE VERIFICATION**

THIS BAR MEASURES 1" ON ORIGINAL. ADJUST SCALE ACCORDINGLY.

Approved \_\_\_\_\_

DRAWING STATUS

Status	Date	Initial

Status	Date	Initial

**GM POWERTRAIN  
BEDFORD PLANT**

**STREAM INVESTIGATION SUMMARY**

**STREAM SAMPLE LOCATIONS**

**STUDY AREA 10**

Source Reference:  
BASE MAP COMPLETED BY AIR-LAND SURVEYS, FLINT, MI, APRIL 2001

Project Manager: J.M.	Reviewed By: S.V.	Date: AUGUST 2002
Scale: AS SHOWN	Project No: 13968-00	Report No: PRES005
		Drawing No: 10

13968-00/PRES005/01/02/STUDY AREA 10