



GM POWERTRAIN BEDFORD FACILITY BEDFORD, INDIANA

RCRA CORRECTIVE ACTION/CERCLA REMOVAL ACTION

GM POWERTRAIN BEDFORD PLANT, BEDFORD, INDIANA

Welcome to the March 2007 Public Information Session March 1, 2007



- Facility located on 152.5 acres and is approximately 1,000,000 square feet
- Approximately 1,000 employees



REMOVAL ACTION

RCRA CORRECTIVE ACTION/CERCLA REMOVAL ACTION

G M P O W E R T R A I N B E D F O R D P L A N T , B E D F O R D , I N D I A N A

- Comprehensive Environmental Response, Compensation, and Liability Act (CERCLA) Removal Action (RA)
 - Bailey's Branch and Pleasant Run PCB cleanup of creek sediments and floodplain soil.
 - RA Elements:
 - Control of impacted springs and seeps along creeks;
 - Removal of floodplain soil to 1.8 ppm and sediment to 1 ppm in the creek



REMOVAL ACTION STATUS

RCRA CORRECTIVE ACTION/CERCLA REMOVAL ACTION

GM POWER TRAIN BEDFORD PLANT, BEDFORD, INDIANA

**DIVERSION
CHANNEL NO. 3**

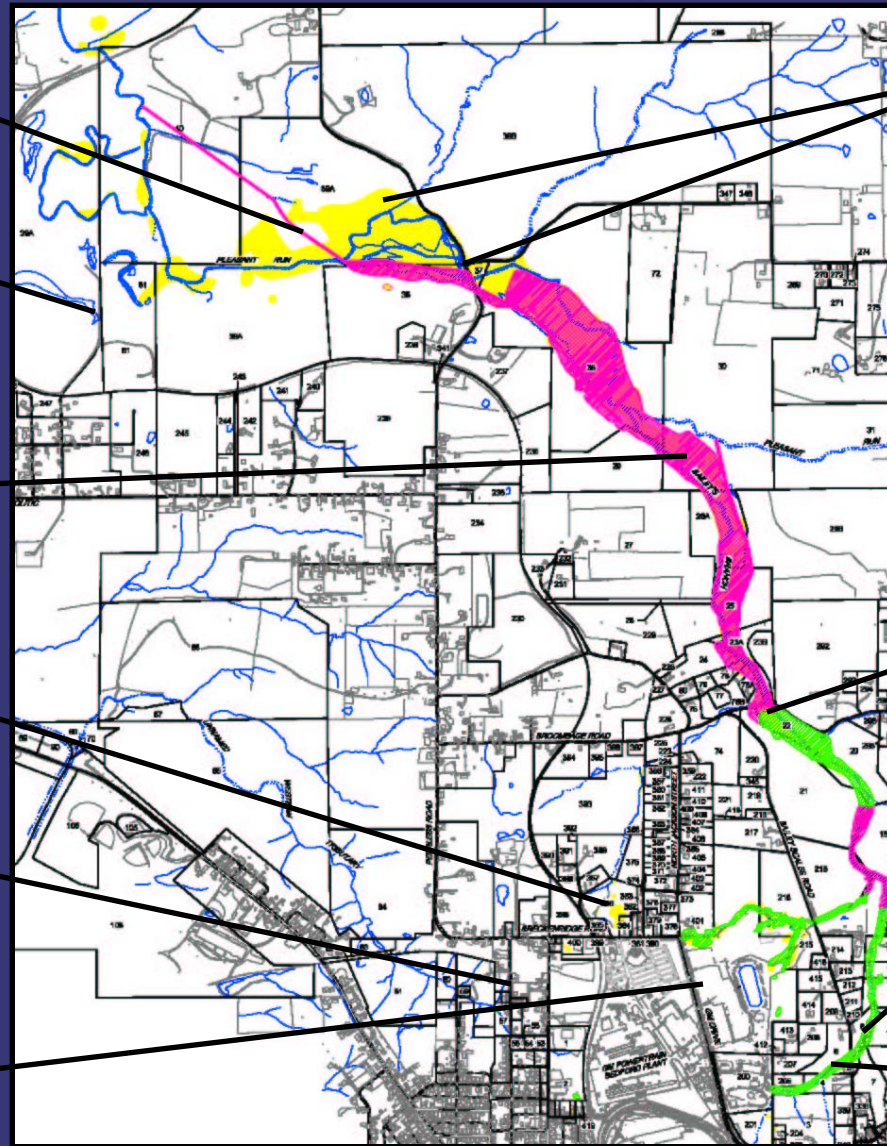
**BORROW SOURCE
AREA AND HAUL
ROAD**

**EXCAVATION
BETWEEN
BROOMSAGE ROAD
AND PEERLESS
ROAD**

**NORTHERN
TRIBUTARY**

**WESTERN
TRIBUTARY**

**EAST PLANT AREA
VAULT**



STAGING AREAS

**BROOMSAGE ROAD
CULVERT
REPLACEMENT**

**RESTORATION
EAST OF BAILEY
SCALES ROAD**

**RESTORATION
WEST OF BAILEY
SCALES ROAD**

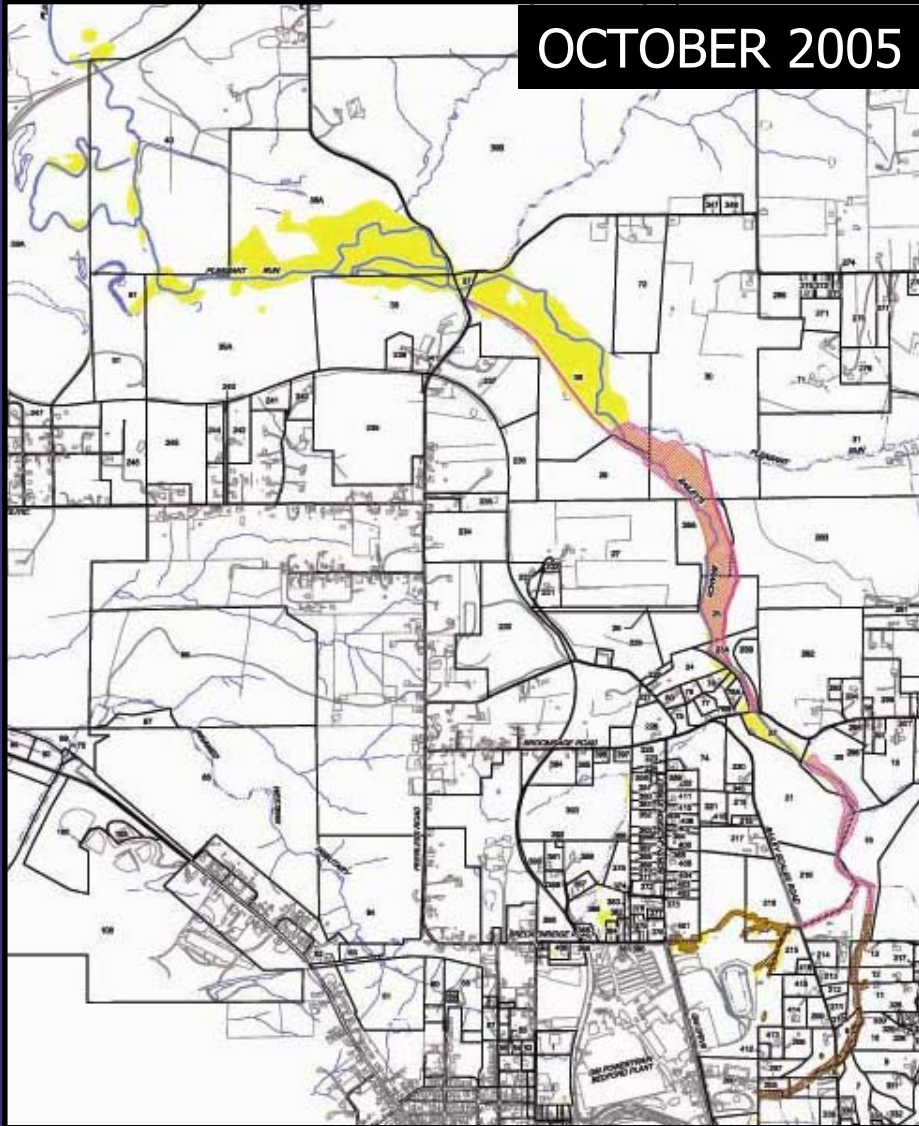


REMOVAL ACTION STATUS OCTOBER 2005 – FEBRUARY 2007

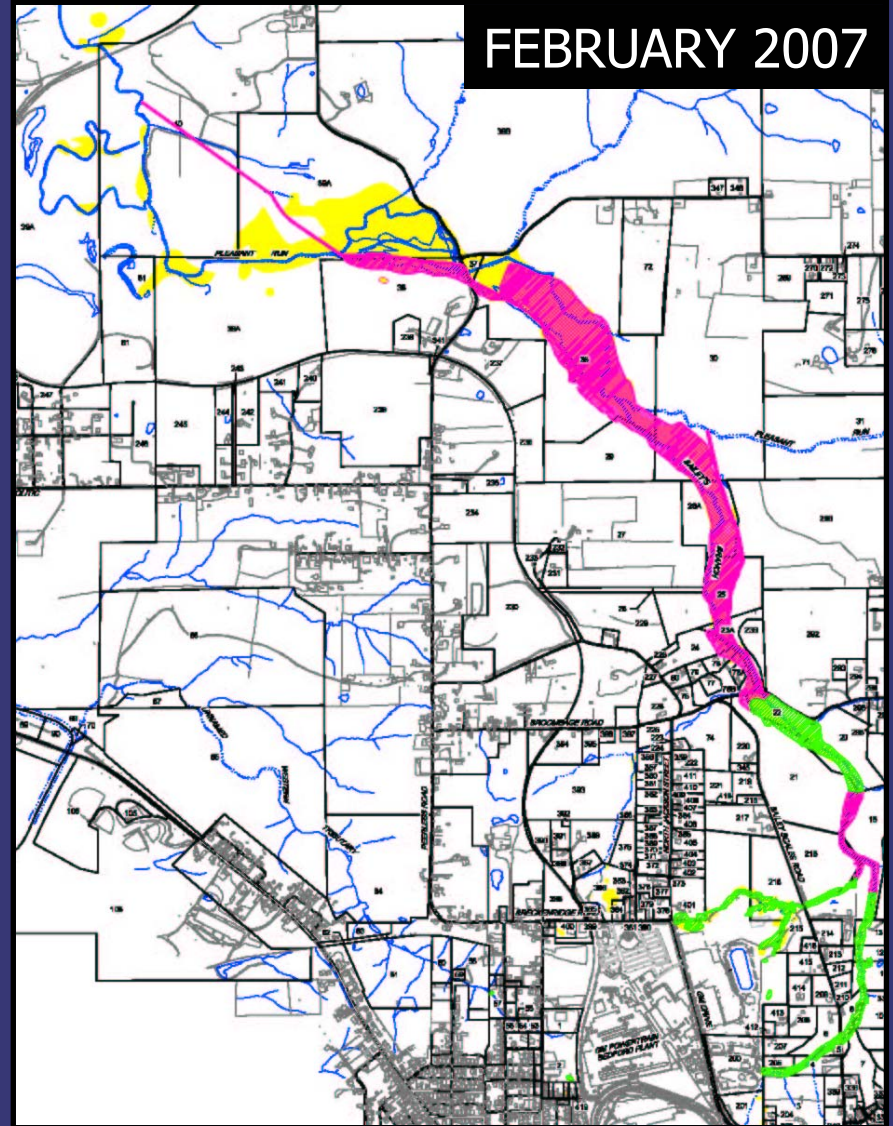
RCRA CORRECTIVE ACTION/CERCLA REMOVAL ACTION

GM POWERTRAIN BEDFORD PLANT, BEDFORD, INDIANA

OCTOBER 2005



FEBRUARY 2007





CREEK RESTORATION

RCRA CORRECTIVE ACTION/CERCLA REMOVAL ACTION

GM POWERTRAIN BEDFORD PLANT, BEDFORD, INDIANA



Looking west from Bailey Scales Road



CREEK RESTORATION

RCRA CORRECTIVE ACTION/CERCLA REMOVAL ACTION

GM POWERTRAIN BEDFORD PLANT, BEDFORD, INDIANA



Looking east from Bailey Scales Road



CREEK RESTORATION

RCRA CORRECTIVE ACTION/CERCLA REMOVAL ACTION

GM POWERTRAIN BEDFORD PLANT, BEDFORD, INDIANA



Parcel 15 and 216
restoration west and east
of Bailey Scales Road



CREEK RESTORATION

RCRA CORRECTIVE ACTION / CERCLA REMOVAL ACTION

GM POWERTRAIN BEDFORD PLANT, BEDFORD, INDIANA



Parcels 20 and 21 restoration



CREEK RESTORATION

RCRA CORRECTIVE ACTION/CERCLA REMOVAL ACTION

GM POWERTRAIN BEDFORD PLANT, BEDFORD, INDIANA



Property south of
Broomsage Road restoration



Property south of Broomsage Road



REMOVAL ACTION STATUS

RCRA CORRECTIVE ACTION/CERCLA REMOVAL ACTION

GM POWERTRAIN BEDFORD PLANT, BEDFORD, INDIANA



North of Broomsage Road



REMOVAL ACTION STATUS

RCRA CORRECTIVE ACTION/CERCLA REMOVAL ACTION

GM POWERTRAIN BEDFORD PLANT, BEDFORD, INDIANA

- A paving contractor is on retainer to maintain the roads, as needed. More difficult to perform repair in winter as asphalt plants are shut down.
- GM contacted local schools regarding school bus routes and hours.
- Contractors are informed of local traffic concerns, including school bus routes and hours.
- CRA is continually monitoring driver safety of truckers.
- Truck Traffic Issues:
Katie Kamm - (812) 279-0977





REMOVAL ACTION STATUS

RCRA CORRECTIVE ACTION/CERCLA REMOVAL ACTION

GM POWERTRAIN BEDFORD PLANT, BEDFORD, INDIANA



Excavation east of Peerless Road



REMOVAL ACTION STATUS

RCRA CORRECTIVE ACTION/CERCLA REMOVAL ACTION

GM POWERTRAIN BEDFORD PLANT, BEDFORD, INDIANA



Staging Area F



REMOVAL ACTION STATUS

RCRA CORRECTIVE ACTION/CERCLA REMOVAL ACTION

G M P O W E R T R A I N B E D F O R D P L A N T , B E D F O R D , I N D I A N A



Staging Area G



REMOVAL ACTION STATUS

RCRA CORRECTIVE ACTION/CERCLA REMOVAL ACTION

GM POWERTRAIN BEDFORD PLANT, BEDFORD, INDIANA



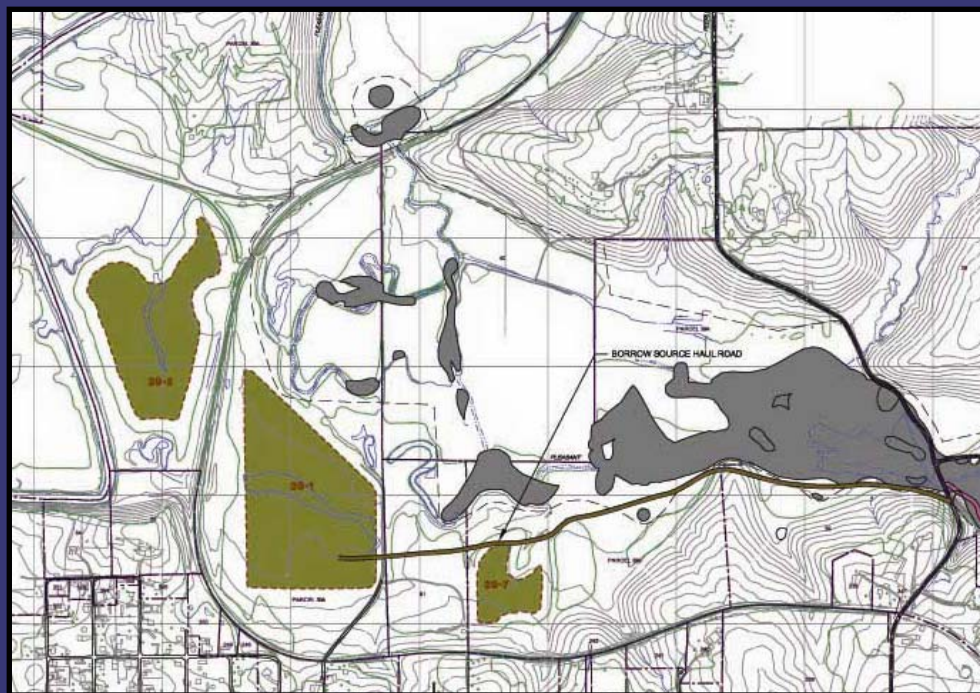
Diversion Channel No. 3



REMOVAL ACTION STATUS BORROW SOURCE AREA

RCRA CORRECTIVE ACTION/CERCLA REMOVAL ACTION

GM POWERTRAIN BEDFORD PLANT, BEDFORD, INDIANA



GM has created a borrow source for use in restoration



SITE SOURCE CONTROLS

RCRA CORRECTIVE ACTION/CERCLA REMOVAL ACTION

GM POWERTRAIN BEDFORD PLANT, BEDFORD, INDIANA



Parcel 201 Sumps



- RCRA Corrective Action
 - Conducted under a performance-based agreement with the U.S. EPA Region V. The agreement was signed on March 20, 2001 and amended on October 1, 2002.
 - Continuing to perform soil and groundwater investigation
 - Installing of new groundwater wells and new round of groundwater sampling
 - Dye investigation
 - Implementing Interim Measures
 - East Plant Area
 - Western Tributary completed in November 2006
 - Northern Tributary in early 2007



STATUS OF RCRA CORRECTIVE ACTION

RCRA CORRECTIVE ACTION/CERCLA REMOVAL ACTION

GM POWERTRAIN BEDFORD PLANT, BEDFORD, INDIANA

UPCOMING ACTIVITIES 2007

- Implement the Northern Tributary IM
- Continue RFI groundwater monitoring
- Additional groundwater investigation





STATUS OF RCRA CORRECTIVE ACTION

RCRA CORRECTIVE ACTION/CERCLA REMOVAL ACTION

GM POWERTRAIN BEDFORD PLANT, BEDFORD, INDIANA

East Plant Area Interim Measure

- Re-use of low PCB Removal Action soil
- Select soil removal
 - >50 PPM removal completed November 21, 2006
- >50 PPM Landfill Vault
 - Cover to be placed prior to winter
- Cover System
 - Contract awarded
- Perimeter Groundwater Collection System
- AOI 8 Collection System
- Long-term maintenance and monitoring





EAST PLANT AREA IM

RCRA CORRECTIVE ACTION/CERCLA REMOVAL ACTION

GM POWERTRAIN BEDFORD PLANT, BEDFORD, INDIANA



East Plant Area Vault



EAST PLANT AREA IM

RCRA CORRECTIVE ACTION/CERCLA REMOVAL ACTION

GM POWERTRAIN BEDFORD PLANT, BEDFORD, INDIANA



East Plant Area >50 Excavation



EAST PLANT AREA IM

RCRA CORRECTIVE ACTION/CERCLA REMOVAL ACTION

GM POWERTRAIN BEDFORD PLANT, BEDFORD, INDIANA

Sedimentation Ponds





STORMWATER TREATMENT PLANT

RCRA CORRECTIVE ACTION/CERCLA REMOVAL ACTION

GM POWERTRAIN BEDFORD PLANT, BEDFORD, INDIANA





COMMUNITY RELATIONS ACTIVITIES

RCRA CORRECTIVE ACTION/CERCLA REMOVAL ACTION

G M P O W E R T R A I N B E D F O R D P L A N T , B E D F O R D , I N D I A N A

- Community meetings are held on a quarterly basis
 - This set of meetings are February 28 and March 1, 2007.
 - Presentations have been and will continue to be posted to the website.
 - The next community meetings are likely to be in June 2007.
 - CLP meeting will be held this Friday, March 2nd.
 - People can always come to the field trailer and talk one-on-one.



COMMUNITY RELATIONS ACTIVITIES

RCRA CORRECTIVE ACTION/CERCLA REMOVAL ACTION

G M P O W E R T R A I N B E D F O R D P L A N T , B E D F O R D , I N D I A N A

- Project website at:
<http://www.BedfordPowertrainCorrectiveAction.com>
- Quarterly Community Meetings now available on the website
- GM Community Relations Contact person is Becki Akers
The toll-free number remains (866) 223-0856
- Public Information Repository (GM Plant)
Currently by appointment
- Public Information Repository (Library)
- Community Liaison Panel (CLP)
- Periodic information sessions
- Periodic Project Fact Sheets (Fifteen issued to date)
- Truck Traffic Issues: Katie Kamm – (812) 279-0977