



GM POWERTRAIN BEDFORD FACILITY BEDFORD, INDIANA

RCRA CORRECTIVE ACTION/CERCLA REMOVAL ACTION

GM POWERTRAIN BEDFORD PLANT, BEDFORD, INDIANA

Welcome to the March 2009 Public Information Session March 26, 2009



- Facility located on 152.5 acres and is approximately 1,000,000 square feet
- Approximately 1,000 employees

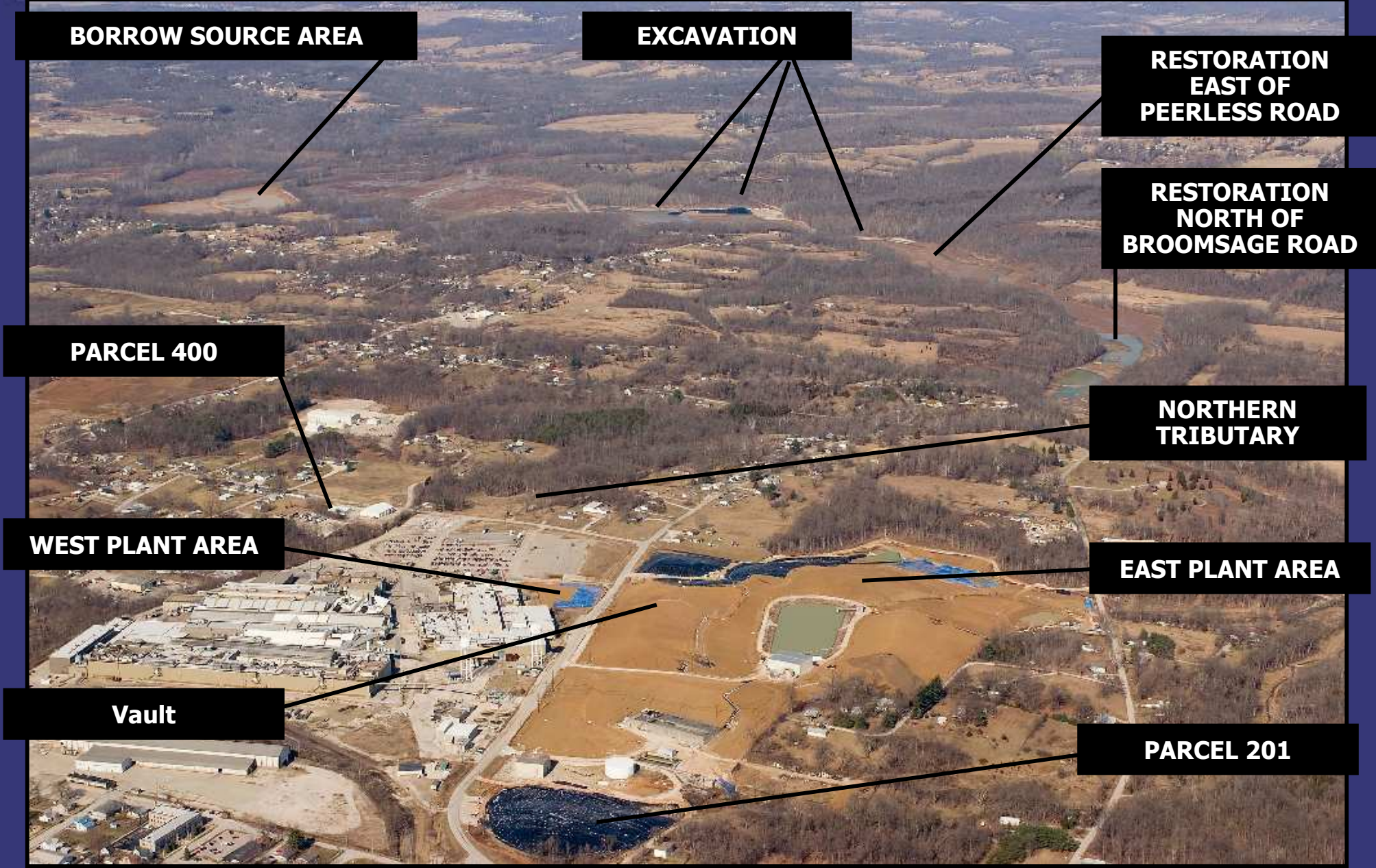


- Comprehensive Environmental Response, Compensation, and Liability Act (CERCLA) Removal Action (RA)
 - Bailey's Branch and Pleasant Run PCB cleanup of creek sediments and floodplain soil.
 - RA Elements:
 - Control of impacted springs and seeps along creeks; and
 - Removal of floodplain soil to 1.8 ppm and sediment to 1 ppm in the creek.
 - On-Site and off-Site work is being consolidated to speed up progress.
 - Excavation of creek sediments and floodplain soil complete in Summer 2009.
 - Restoration of excavated areas continue into 2010.



RCRA CORRECTIVE ACTION/CERCLA REMOVAL ACTION

GM POWERTRAIN BEDFORD PLANT BEDFORD INDIANA





REMOVAL ACTION STATUS

RCRA CORRECTIVE ACTION/CERCLA REMOVAL ACTION

GM POWERTRAIN BEDFORD PLANT, BEDFORD, INDIANA

DIVERSION CHANNEL NO. 3

BORROW SOURCE AREA AND HAUL ROAD

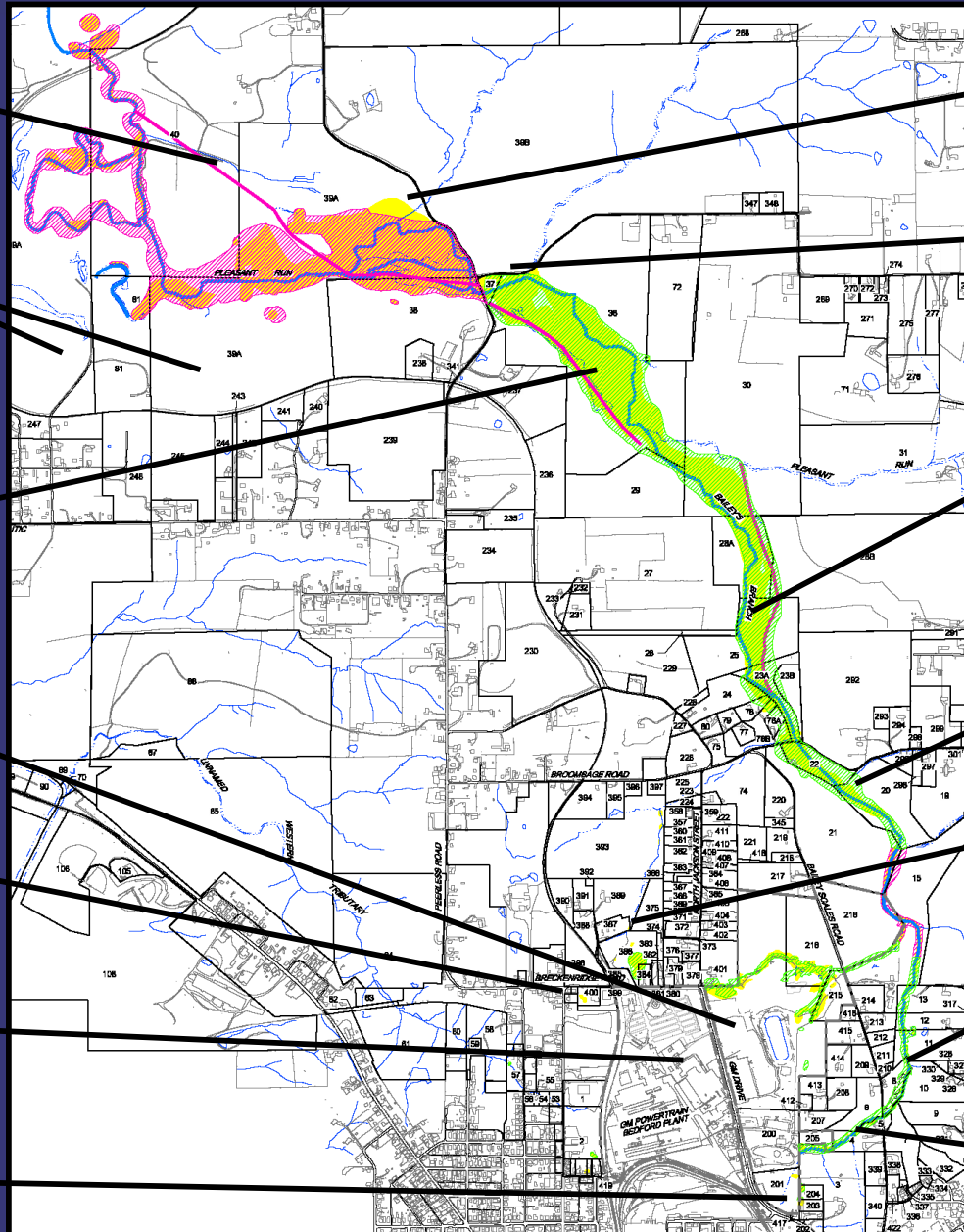
NEW RESTORATION BETWEEN BROOMSAGE ROAD AND PEERLESS ROAD

EAST PLANT AREA VAULT

PARCEL 400

WEST PLANT AREA

PARCEL 201



STAGING AREA

DOWNSTREAM WATER TREATMENT

RESTORATION NORTH OF BROOMSAGE ROAD

RESTORATION SOUTH OF BROOMSAGE ROAD

NORTHERN TRIBUTARY

RESTORATION EAST OF BAILEY SCALES ROAD

RESTORATION WEST OF BAILEY SCALES ROAD



CREEK RESTORATION

RCRA CORRECTIVE ACTION / CERCLA REMOVAL ACTION

GM POWERTRAIN BEDFORD PLANT, BEDFORD, INDIANA



Looking west and east from Bailey Scales Road



CREEK RESTORATION

RCRA CORRECTIVE ACTION/CERCLA REMOVAL ACTION

GM POWERTRAIN BEDFORD PLANT, BEDFORD, INDIANA



Looking north and south of Broomsage Road restoration



CREEK RESTORATION

RCRA CORRECTIVE ACTION/CERCLA REMOVAL ACTION

GM POWERTRAIN BEDFORD PLANT, BEDFORD, INDIANA



Restoration North of Broomsage Road



CREEK RESTORATION STATUS

RCRA CORRECTIVE ACTION/CERCLA REMOVAL ACTION

GM POWERTRAIN BEDFORD PLANT, BEDFORD, INDIANA



Restoration east of Peerless Road



CREEK RESTORATION

RCRA CORRECTIVE ACTION/CERCLA REMOVAL ACTION

GM POWERTRAIN BEDFORD PLANT, BEDFORD, INDIANA





CREEK EXCAVATION STATUS

RCRA CORRECTIVE ACTION/CERCLA REMOVAL ACTION

GM POWERTRAIN BEDFORD PLANT, BEDFORD, INDIANA



Excavation west of Peerless Road

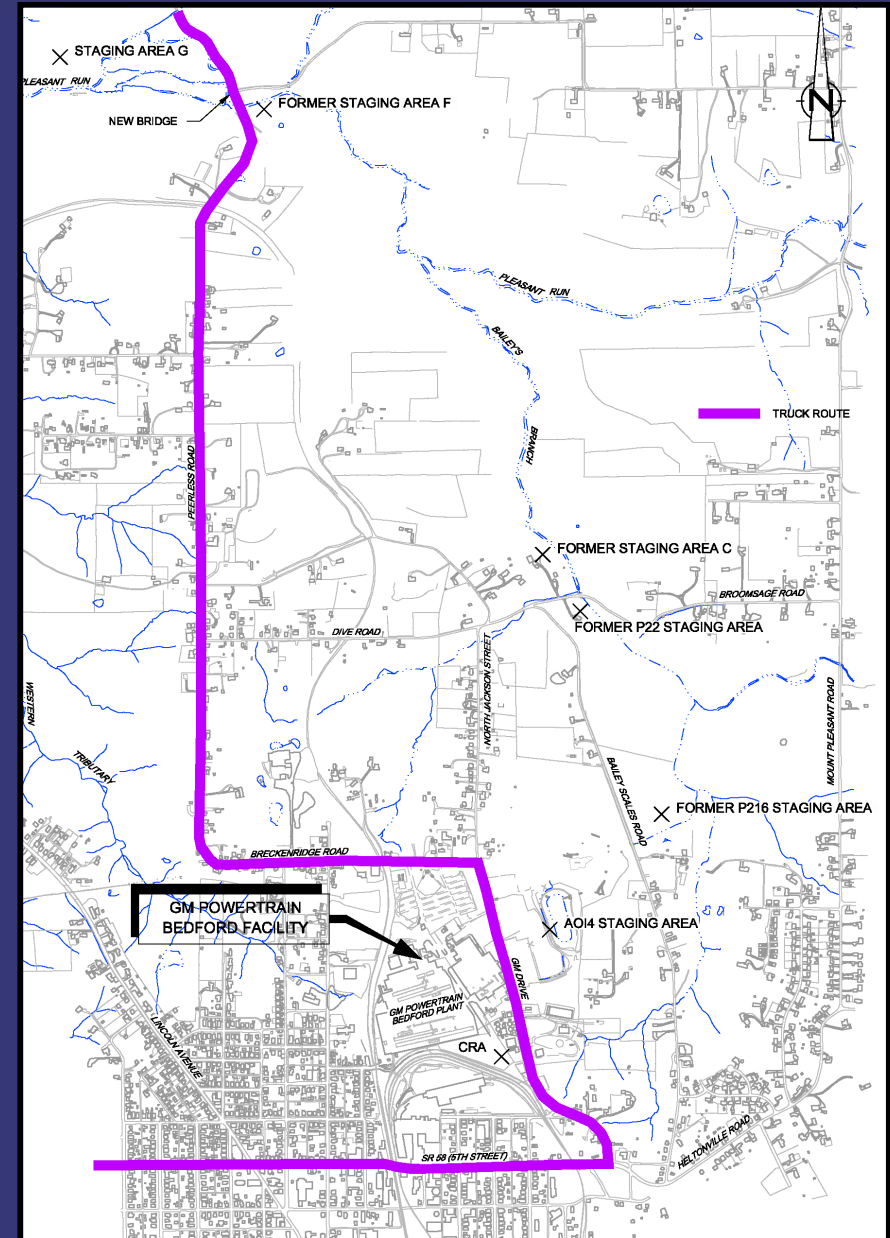


TRUCK TRAFFIC ROUTES

RCRA CORRECTIVE ACTION/CERCLA REMOVAL ACTION

GM POWERTRAIN BEDFORD PLANT, BEDFORD, INDIANA

- There will be decreased road traffic through the winter. Trucking will continue as weather allows.
- Trucking on a full time basis will resume in June 2009 when excavation and restoration activities are resumed.
- GM will be patching/paving roads as needed, as weather permits.
- CRA is continually monitoring driver safety of truckers.
- At the end of truck traffic, GM will be resurfacing/repairing the last stretches of road used by the project, where paving is in poor condition.
- Truck Traffic Issues:
Katie Kamm - (812) 279-0977





RCRA CORRECTIVE ACTION

RCRA CORRECTIVE ACTION/CERCLA REMOVAL ACTION

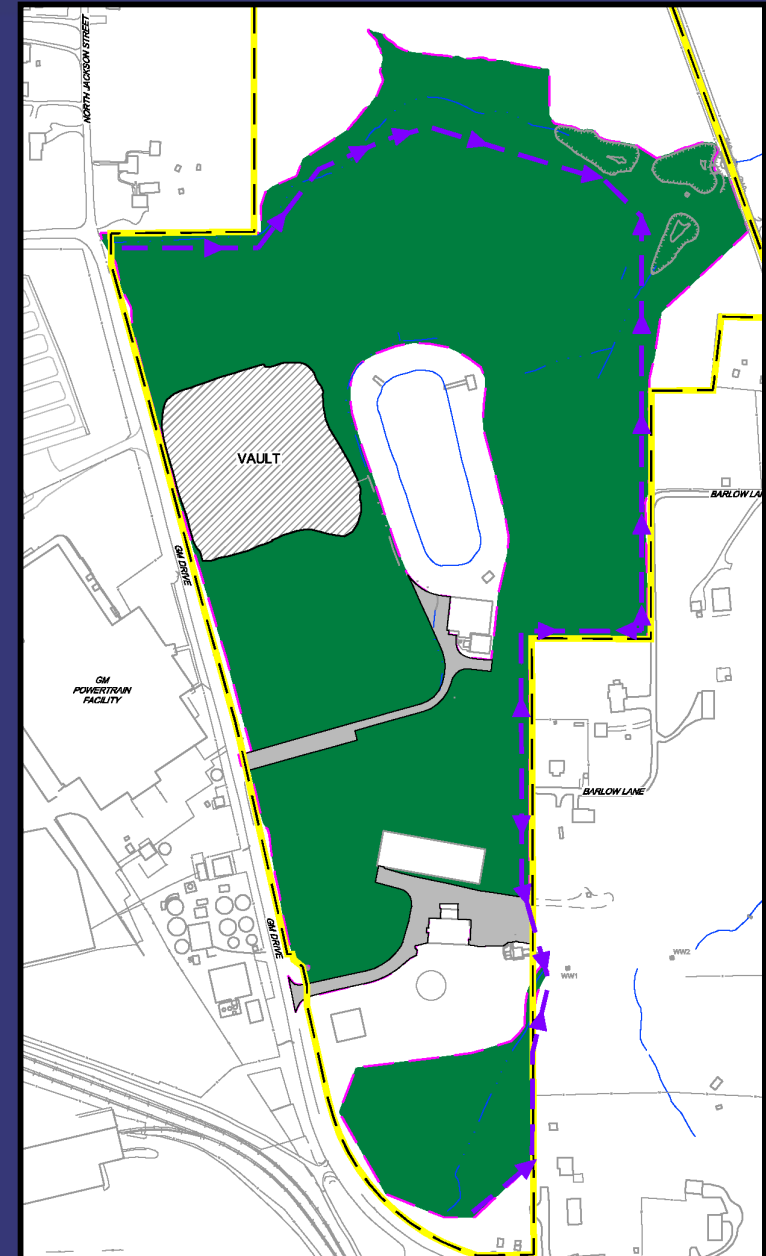
GM POWERTRAIN BEDFORD PLANT, BEDFORD, INDIANA

- RCRA Corrective Action
 - Conducted under a performance-based agreement with the U.S. EPA Region V. The agreement was signed on March 20, 2001 and amended October 1, 2002, March 29, 2008, and May 9, 2008
 - Continuing to perform soil and groundwater investigation
 - Implementing Interim Measures
 - East Plant Area
 - West Plant Area



East Plant Area Interim Measure

- Re-use of low PCB Removal Action soil
 - ongoing
- Select soil removal
 - >50 PPM removal complete in the East Plant Area and placed into the Vault
- >50 PPM Landfill Vault
 - Filling of the Vault is complete
 - Installation of the Vault cover is underway
 - North section has temporary cover for winter protection
- Cover System
 - Soil placement/hauling has slowed during winter
- Perimeter Groundwater Collection System
 - Interim groundwater collection ongoing
 - Pilot Study Work Plant submitted to U.S. EPA
- AOI 8 Collection System
 - Interim recovery system to be installed
 - Design to be finalized
- Long-term maintenance and monitoring
 - Following construction





EAST PLANT AREA

RCRA CORRECTIVE ACTION/CERCLA REMOVAL ACTION

GM POWERTRAIN BEDFORD PLANT, BEDFORD, INDIANA





WEST PLANT AREA

RCRA CORRECTIVE ACTION/CERCLA REMOVAL ACTION

GM POWERTRAIN BEDFORD PLANT, BEDFORD, INDIANA

- The main excavation in front of plant will have a permanent cover and parking lot placed over top, to be installed in spring/summer 2009.





PARCEL 400

RCRA CORRECTIVE ACTION/CERCLA REMOVAL ACTION

GM POWERTRAIN BEDFORD PLANT, BEDFORD, INDIANA





UPCOMING RCRA ACTIVITIES

RCRA CORRECTIVE ACTION/CERCLA REMOVAL ACTION

G M P O W E R T R A I N B E D F O R D P L A N T , B E D F O R D , I N D I A N A

UPCOMING ACTIVITIES FOR 2009

- Transfer of soil from creek areas to East Plant Area
- Continue work on the Vault cover
- Continue work on the East Plant Area Cover System
- Restoration in the main creek between the confluence of Bailey's Branch and Pleasant Run and the Peerless Road Bridge
- Spring Remedial Alternative Design for large spring on Bailey's Branch
- Continue RFI groundwater monitoring
- Continue road repair work, as needed



COMMUNITY RELATIONS ACTIVITIES

RCRA CORRECTIVE ACTION/CERCLA REMOVAL ACTION

GM POWERTRAIN BEDFORD PLANT, BEDFORD, INDIANA

- Community meetings are held on a quarterly basis.
 - Presentations have been and will continue to be posted to the website.
 - People can always come to the field trailer and talk one-on-one.
- Next meetings will be held in June 2009



COMMUNITY RELATIONS ACTIVITIES

RCRA CORRECTIVE ACTION / CERCLA REMOVAL ACTION

GM POWERTRAIN BEDFORD PLANT, BEDFORD, INDIANA

- Project website at:
<http://www.BedfordPowertrainCorrectiveAction.com>
- Quarterly Community Meetings are available on the website
- GM Community Relations Contact person is Susan Waun and the communications number is (812) 583-3753
- Public Information Repository (GM Plant) currently by appointment with Susan
- Community Liaison Panel (CLP)
- Periodic information sessions
- Periodic Project Fact Sheets (twenty-three issued to date)
- Truck Traffic Issues: Katie Kamm – (812) 279-0977