



# GM POWERTRAIN BEDFORD FACILITY BEDFORD, INDIANA

RCRA CORRECTIVE ACTION/CERCLA REMOVAL ACTION

GM POWERTRAIN BEDFORD PLANT, BEDFORD, INDIANA

## Welcome to the October 2007 Public Information Session October 11, 2007



- Facility located on 152.5 acres and is approximately 1,000,000 square feet
- Approximately 1,000 employees



# REMOVAL ACTION

RCRA CORRECTIVE ACTION/CERCLA REMOVAL ACTION

G M P O W E R T R A I N B E D F O R D P L A N T , B E D F O R D , I N D I A N A

- Comprehensive Environmental Response, Compensation, and Liability Act (CERCLA) Removal Action (RA)
  - Bailey's Branch and Pleasant Run PCB cleanup of creek sediments and floodplain soil.
  - RA Elements:
    - Control of impacted springs and seeps along creeks;
    - Removal of floodplain soil to 1.8 ppm and sediment to 1 ppm in the creek.
  - Excavation of creek sediments and floodplain soil should be completed by the end of 2007, however restoration of excavated areas and transportation of soil from staging area to East Plant Area will continue into 2008.



RCRA CORRECTIVE ACTION/CERCLA REMOVAL ACTION

GM POWERTRAIN BEDFORD PLANT, BEDFORD, INDIANA

**BORROW SOURCE AREA**

**EXCAVATION**

**RESTORATION  
NORTH OF  
BROOMSAGE ROAD**

**NORTHERN  
TRIBUTARY**

**EAST PLANT AREA**

**WEST PLANT AREA**

**PARCEL 201**





# REMOVAL ACTION STATUS

RCRA CORRECTIVE ACTION/CERCLA REMOVAL ACTION

GM POWERTRAIN BEDFORD PLANT, BEDFORD, INDIANA

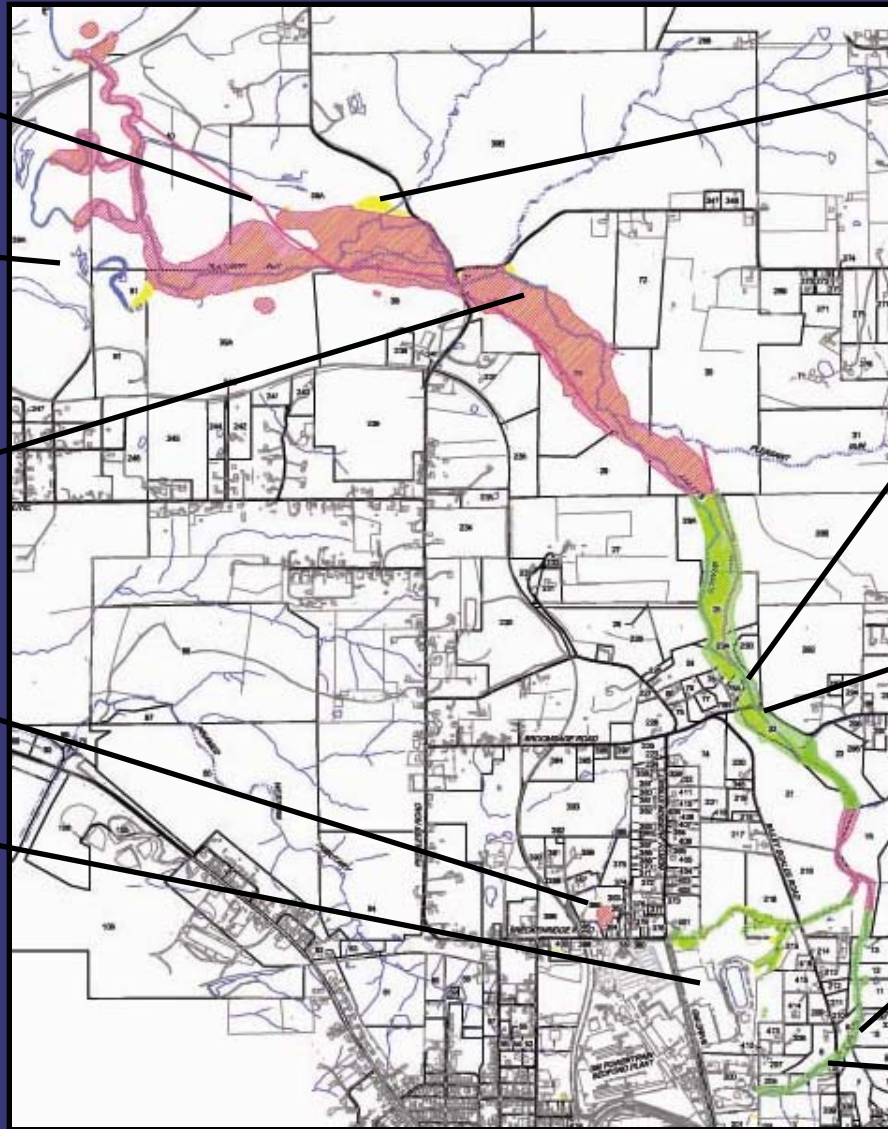
**DIVERSION  
CHANNEL NO. 3**

**BORROW SOURCE  
AREA AND HAUL  
ROAD**

**EXCAVATION  
BETWEEN  
BROOMSAGE ROAD  
AND PEERLESS  
ROAD**

**NORTHERN  
TRIBUTARY**

**EAST PLANT AREA  
VAULT**



**STAGING AREA**

**RESTORATION  
NORTH OF  
BROOMSAGE ROAD**

**RESTORATION  
SOUTH OF  
BROOMSAGE ROAD**

**RESTORATION  
EAST OF BAILEY  
SCALES ROAD**

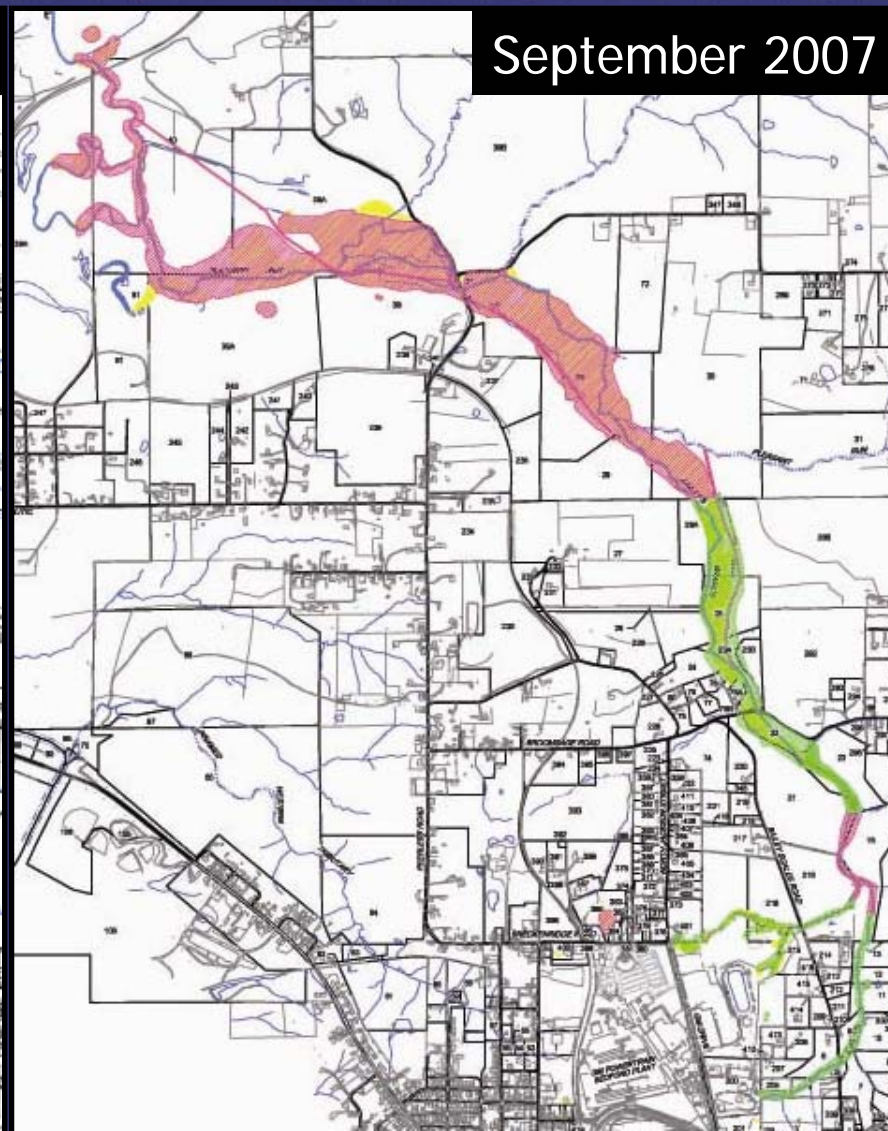
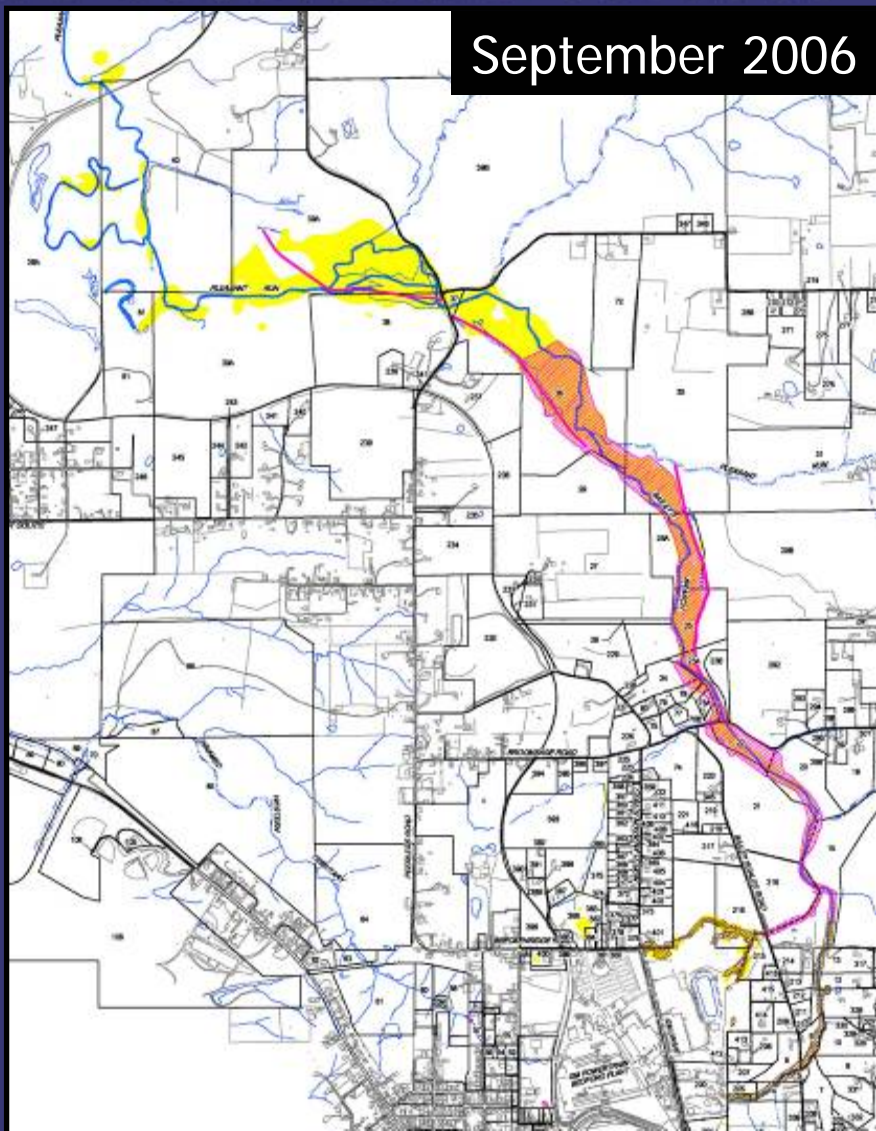
**RESTORATION  
WEST OF BAILEY  
SCALES ROAD**



# REMOVAL ACTION STATUS SEPTEMBER 2006 – SEPTEMBER 2007

RCRA CORRECTIVE ACTION/CERCLA REMOVAL ACTION

GM POWERTRAIN BEDFORD PLANT, BEDFORD, INDIANA





# CREEK RESTORATION

RCRA CORRECTIVE ACTION/CERCLA REMOVAL ACTION

GM POWERTRAIN BEDFORD PLANT, BEDFORD, INDIANA



Looking west from Bailey Scales Road



# CREEK RESTORATION

RCRA CORRECTIVE ACTION/CERCLA REMOVAL ACTION

G M P O W E R T R A I N B E D F O R D P L A N T , B E D F O R D , I N D I A N A



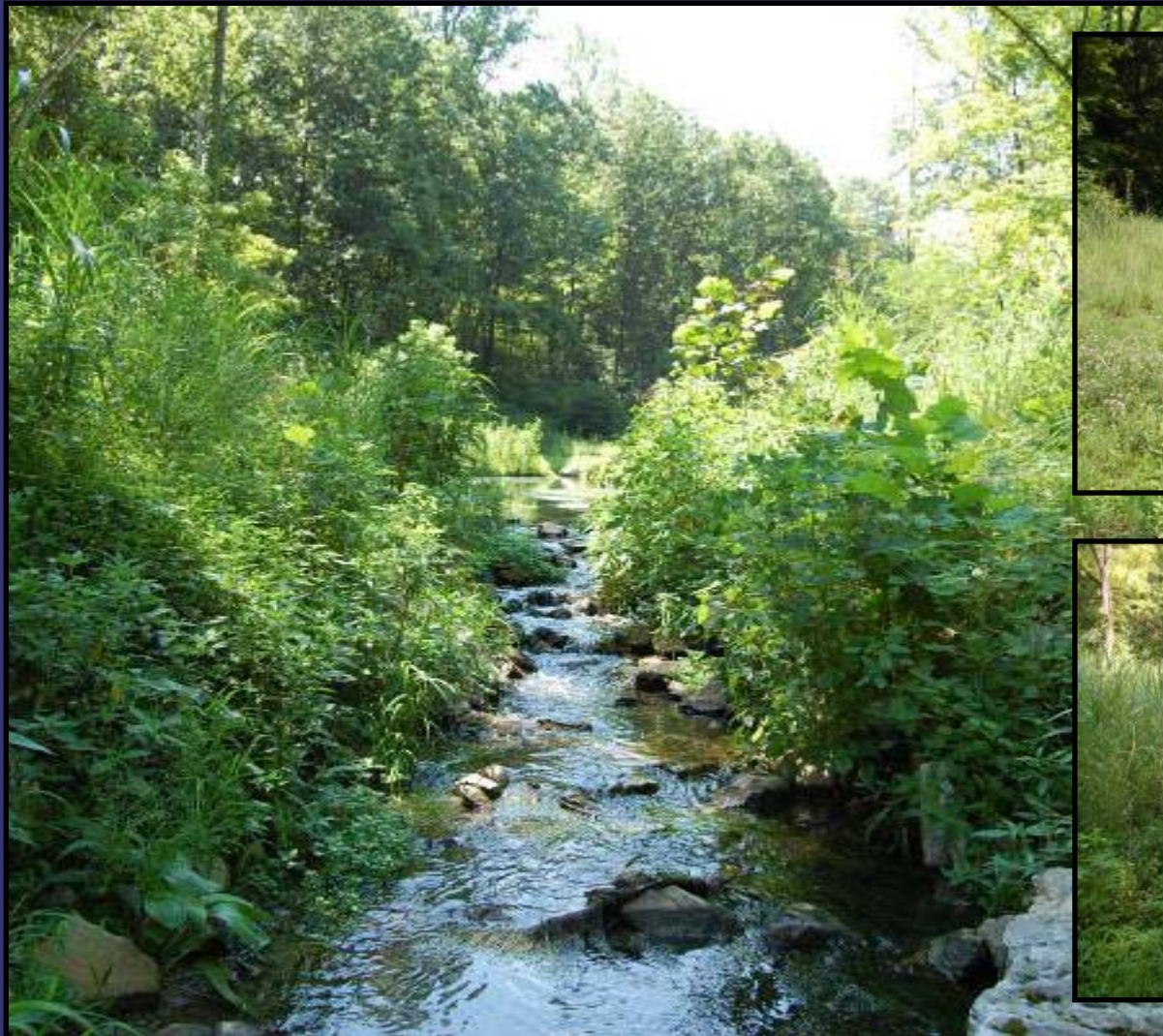
Looking east from Bailey Scales Road



# CREEK RESTORATION

RCRA CORRECTIVE ACTION/CERCLA REMOVAL ACTION

GM POWERTRAIN BEDFORD PLANT, BEDFORD, INDIANA



East of Bailey Scales Road





# CREEK RESTORATION

RCRA CORRECTIVE ACTION/CERCLA REMOVAL ACTION

GM POWERTRAIN BEDFORD PLANT, BEDFORD, INDIANA



East of Bailey Scales Road



# CREEK RESTORATION

RCRA CORRECTIVE ACTION/CERCLA REMOVAL ACTION

GM POWERTRAIN BEDFORD PLANT, BEDFORD, INDIANA



Parcel 15 and 216 restoration east of Bailey Scales Road; this is the northern boundary of the Plant Property



# CREEK RESTORATION

RCRA CORRECTIVE ACTION/CERCLA REMOVAL ACTION

G M P O W E R T R A I N B E D F O R D P L A N T , B E D F O R D , I N D I A N A



South of Broomsage Road



# CREEK RESTORATION

RCRA CORRECTIVE ACTION/CERCLA REMOVAL ACTION

GM POWERTRAIN BEDFORD PLANT, BEDFORD, INDIANA



Property south of  
Broomsage Road restoration



Property south of Broomsage Road



# CREEK RESTORATION

RCRA CORRECTIVE ACTION/CERCLA REMOVAL ACTION

GM POWERTRAIN BEDFORD PLANT, BEDFORD, INDIANA



Restoration north of Broomsage Road



# CREEK RESTORATION

RCRA CORRECTIVE ACTION/CERCLA REMOVAL ACTION

GM POWERTRAIN BEDFORD PLANT, BEDFORD, INDIANA





# CREEK RESTORATION

RCRA CORRECTIVE ACTION/CERCLA REMOVAL ACTION

G M P O W E R T R A I N B E D F O R D P L A N T , B E D F O R D , I N D I A N A





# CREEK RESTORATION

RCRA CORRECTIVE ACTION/CERCLA REMOVAL ACTION

GM POWERTRAIN BEDFORD PLANT, BEDFORD, INDIANA







# CREEK RESTORATION

RCRA CORRECTIVE ACTION/CERCLA REMOVAL ACTION

GM POWERTRAIN BEDFORD PLANT, BEDFORD, INDIANA





# CREEK EXCAVATION STATUS

RCRA CORRECTIVE ACTION/CERCLA REMOVAL ACTION

GM POWERTRAIN BEDFORD PLANT, BEDFORD, INDIANA





# CREEK EXCAVATION STATUS

RCRA CORRECTIVE ACTION/CERCLA REMOVAL ACTION

GM POWERTRAIN BEDFORD PLANT, BEDFORD, INDIANA



Excavation east of Peerless Road



# CREEK EXCAVATION STATUS

RCRA CORRECTIVE ACTION/CERCLA REMOVAL ACTION

G M P O W E R T R A I N B E D F O R D P L A N T , B E D F O R D , I N D I A N A



Excavation east and west of Peerless Road



# CREEK EXCAVATION STATUS

RCRA CORRECTIVE ACTION/CERCLA REMOVAL ACTION

GM POWERTRAIN BEDFORD PLANT, BEDFORD, INDIANA



Excavation west of Peerless Road



# CREEK EXCAVATION STATUS

RCRA CORRECTIVE ACTION/CERCLA REMOVAL ACTION

GM POWERTRAIN BEDFORD PLANT, BEDFORD, INDIANA





# BORROW SOURCE AREA

RCRA CORRECTIVE ACTION/CERCLA REMOVAL ACTION

GM POWERTRAIN BEDFORD PLANT, BEDFORD, INDIANA

GM has created a borrow source for use in restoration



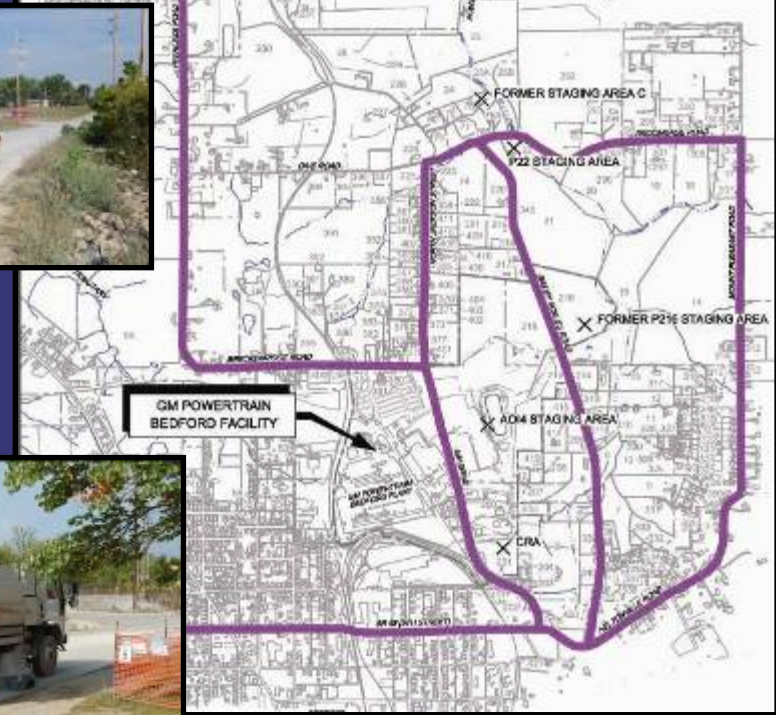


# ROAD MAINTENANCE

RCRA CORRECTIVE ACTION/CERCLA REMOVAL ACTION

GM POWERTRAIN BEDFORD PLANT, BEDFORD, INDIANA

- A paving contractor is on retainer to maintain the roads, as needed.
- GM contacted local schools regarding school bus routes and hours.
- Contractors are informed of local traffic concerns, including school bus routes and hours.
- CRA is continually monitoring driver safety of truckers.
- Truck Traffic Issues:  
Katie Kamm - (812) 279-0977
- GM will be repaving at least part of Peerless Road at the conclusion of the trucking.
- Nozzles on the water truck were changed, have reduced watering the roads during the dry spell.
- New sweeper truck that has a vacuum apparatus







# BAILEY SCALES ROAD PAVING

RCRA CORRECTIVE ACTION/CERCLA REMOVAL ACTION

GM POWERTRAIN BEDFORD PLANT, BEDFORD, INDIANA





# NORTH JACKSON SHOULDER REPAIR

RCRA CORRECTIVE ACTION/CERCLA REMOVAL ACTION

G M P O W E R T R A I N B E D F O R D P L A N T , B E D F O R D , I N D I A N A





# SEEPS AND SPRINGS

RCRA CORRECTIVE ACTION/CERCLA REMOVAL ACTION

GM POWERTRAIN BEDFORD PLANT, BEDFORD, INDIANA

- Investigation at spring south of Broomsage Road is ongoing. Installation of coreholes is complete and the dye-trace study is ongoing.
- Monitoring will continue to be conducted at least quarterly and low or high flow samples will be collected as conditions allow.

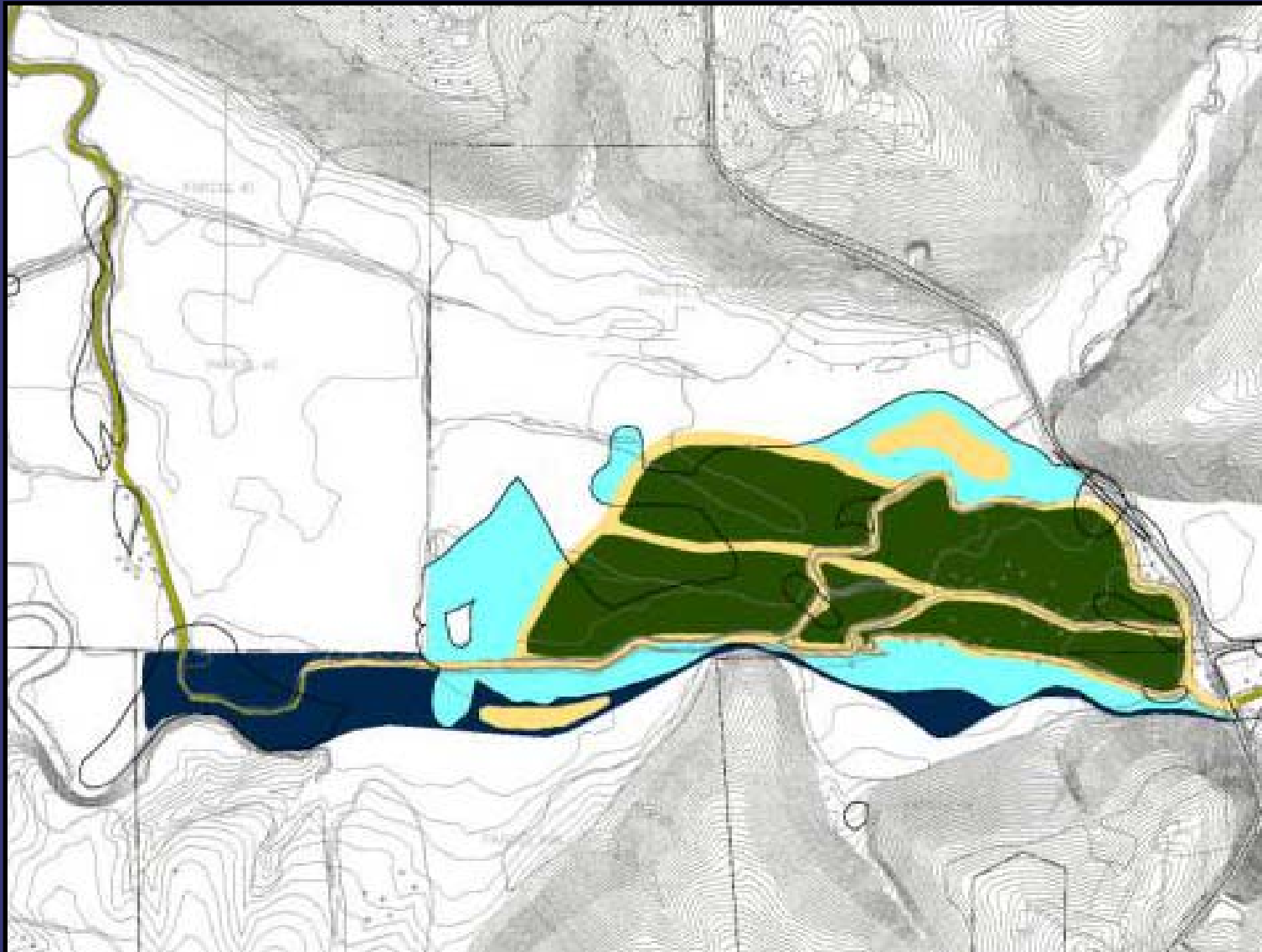




# PROPOSED WETLAND

RCRA CORRECTIVE ACTION/CERCLA REMOVAL ACTION

GM POWERTRAIN BEDFORD PLANT, BEDFORD, INDIANA





# RCRA CORRECTIVE ACTION

RCRA CORRECTIVE ACTION/CERCLA REMOVAL ACTION

G M P O W E R T R A I N B E D F O R D P L A N T , B E D F O R D , I N D I A N A

- RCRA Corrective Action
  - Conducted under a performance-based agreement with the U.S. EPA Region V. The agreement was signed on March 20, 2001 and amended on October 1, 2002.
  - Continuing to perform soil and groundwater investigation
    - Installed new groundwater wells and completed new round of groundwater sampling
    - Dye investigation
  - Implementing Interim Measures
    - East Plant Area
    - Northern Tributary
    - West Plant Area



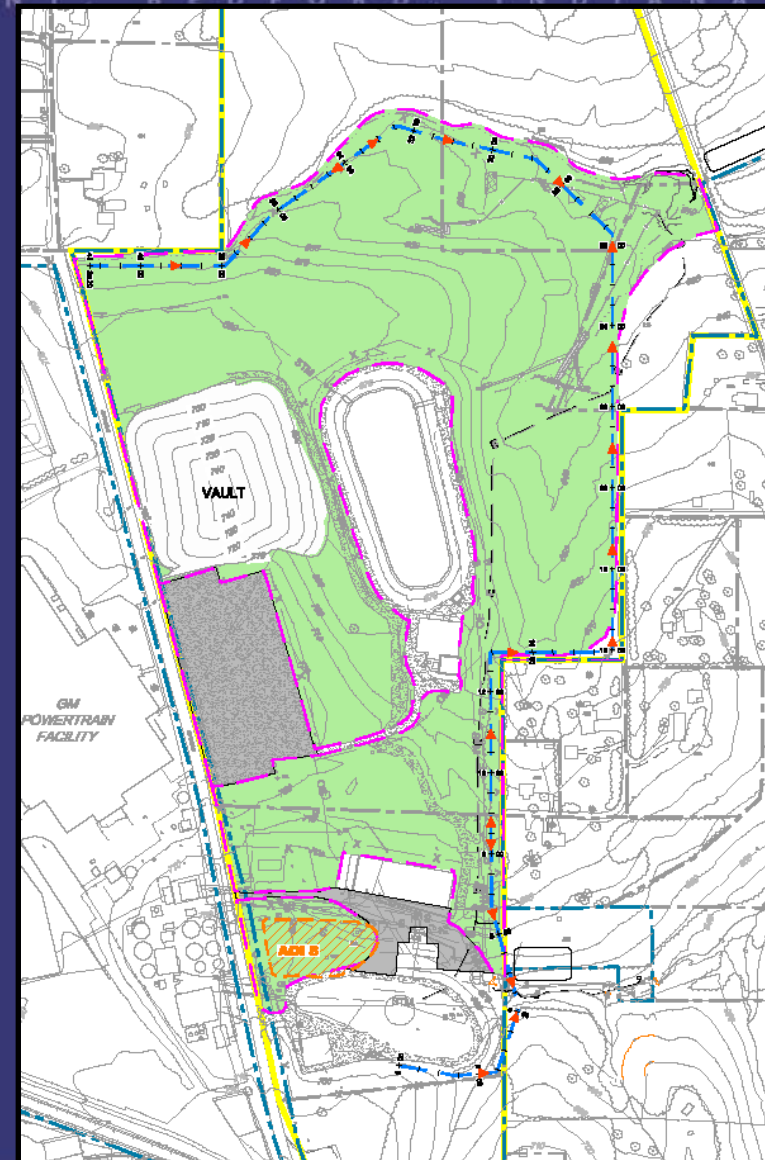
# EAST PLANT AREA

RCRA CORRECTIVE ACTION/CERCLA REMOVAL ACTION

GM POWERTRAIN BEDFORD PLANT BEDFORD INDIANA

## East Plant Area Interim Measure

- Re-use of low PCB Removal Action soil
  - ongoing
- Select soil removal
  - >50 PPM removal
- >50 PPM Landfill Vault
  - Permanent cover to be placed
- Cover System
  - Grading is ongoing
- Perimeter Groundwater Collection System
  - Design being finalized
- AOI 8 Collection System
  - Pre-design testing to be conducted
- Long-term maintenance and monitoring
  - Following construction





# EAST PLANT AREA

RCRA CORRECTIVE ACTION/CERCLA REMOVAL ACTION

GM POWERTRAIN BEDFORD PLANT, BEDFORD, INDIANA





# EAST PLANT AREA

RCRA CORRECTIVE ACTION/CERCLA REMOVAL ACTION

GM POWERTRAIN BEDFORD PLANT, BEDFORD, INDIANA







# NORTHERN TRIBUTARY

RCRA CORRECTIVE ACTION/CERCLA REMOVAL ACTION

GM POWERTRAIN BEDFORD PLANT, BEDFORD, INDIANA





# NORTHERN TRIBUTARY

RCRA CORRECTIVE ACTION/CERCLA REMOVAL ACTION

GM POWERTRAIN BEDFORD PLANT, BEDFORD, INDIANA





# UPCOMING RCRA ACTIVITIES

RCRA CORRECTIVE ACTION/CERCLA REMOVAL ACTION

G M P O W E R T R A I N B E D F O R D P L A N T , B E D F O R D , I N D I A N A

## UPCOMING ACTIVITIES 2007

- Implement West Plant Area IM
- Parcel 201 excavation
- Landfill Vault closure
- Continue RFI groundwater monitoring



# COMMUNITY RELATIONS ACTIVITIES

RCRA CORRECTIVE ACTION/CERCLA REMOVAL ACTION

GM POWERTRAIN BEDFORD PLANT, BEDFORD, INDIANA

- Community meetings are held on a quarterly basis.
  - Presentations have been and will continue to be posted to the website.
  - People can always come to the field trailer and talk one-on-one.
- GM has met with the Bedford City Council to discuss walking trails.
- GM is planning on meeting with the County.
- GM held a meeting to road/traffic issues on September 13.
- GM held the last CLP Meeting on September 14.



# COMMUNITY RELATIONS ACTIVITIES

RCRA CORRECTIVE ACTION/CERCLA REMOVAL ACTION

GM POWERTRAIN BEDFORD PLANT, BEDFORD, INDIANA

- Project website at:  
<http://www.BedfordPowertrainCorrectiveAction.com>
- Quarterly Community Meetings now available on the website
- GM Community Relations Contact person is Becki Akers  
The toll-free number remains (866) 223-0856
- Public Information Repository (GM Plant)  
Currently by appointment
- Public Information Repository (Library)
- Community Liaison Panel (CLP)
- Periodic information sessions
- Periodic Project Fact Sheets (Seventeen issued to date)
- Truck Traffic Issues: Katie Kamm – (812) 279-0977