



GM CET BEDFORD FACILITY BEDFORD, INDIANA

G M C E T B E D F O R D F A C I L I T Y , B E D F O R D , I N D I A N A

Public Information Session June 29, 2016



- Facility located on 152.5 acres and is approximately 1,000,000 square feet of manufacturing footprint
- Approximately 450 employees

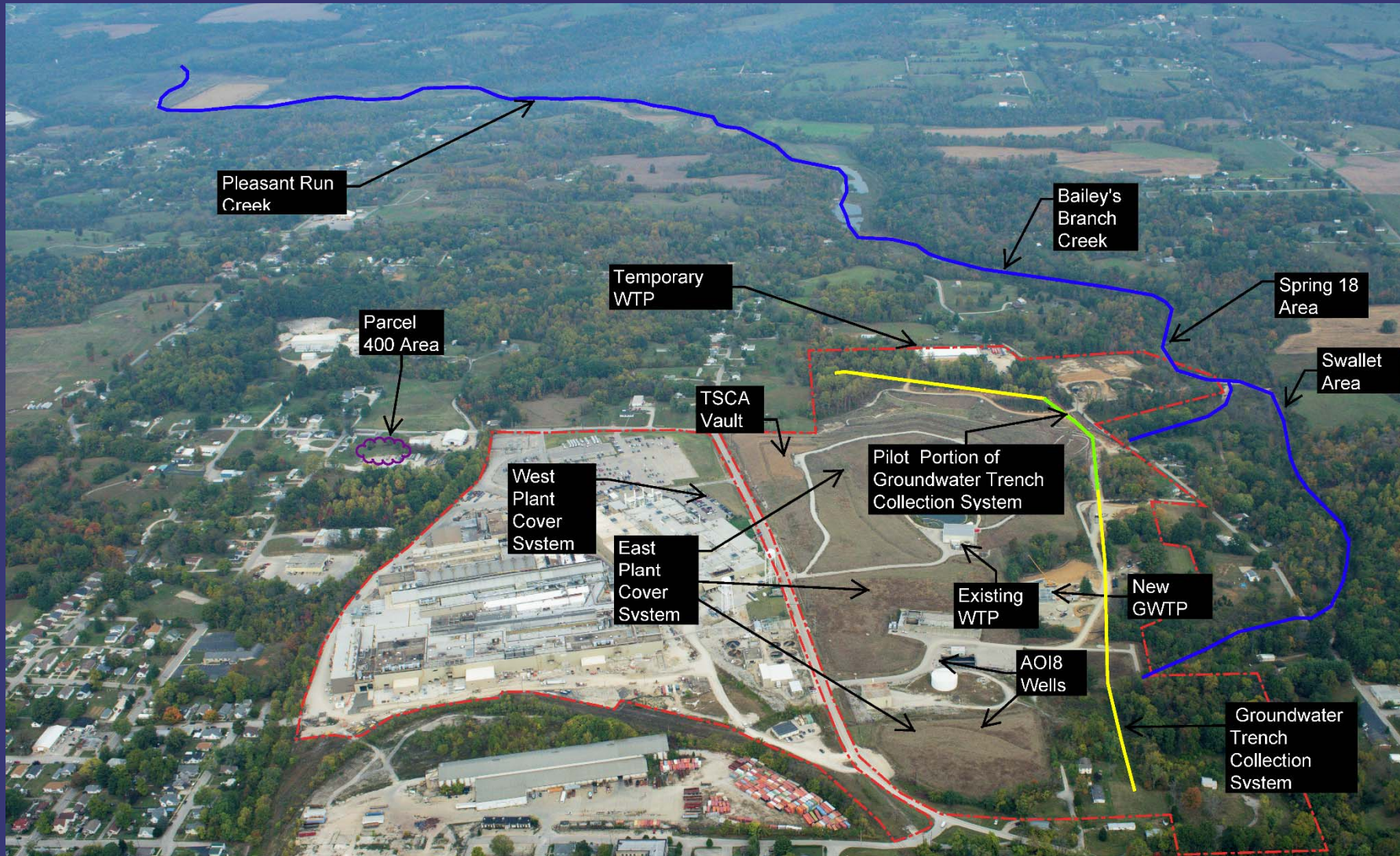


- Comprehensive Environmental Response, Compensation, and Liability Act (CERCLA) Removal Action (RA)
 - Bailey's Branch and Pleasant Run PCB cleanup of creek sediments and floodplain soil
 - RA Elements:
 - Control of impacted springs and seeps along creek
 - Removal of floodplain soil to 1.8 ppm and sediment to 1 ppm in the creek (removal is complete)
 - Monitoring continues for large spring on Baileys Branch Creek
 - Creek and floodplain restoration completed in August 2014
- RCRA Corrective Action
 - GM LLC and USEPA entered into an AOC for those areas which GM LLC is responsible.



GM BEDFORD REMEDIATION PROJECT

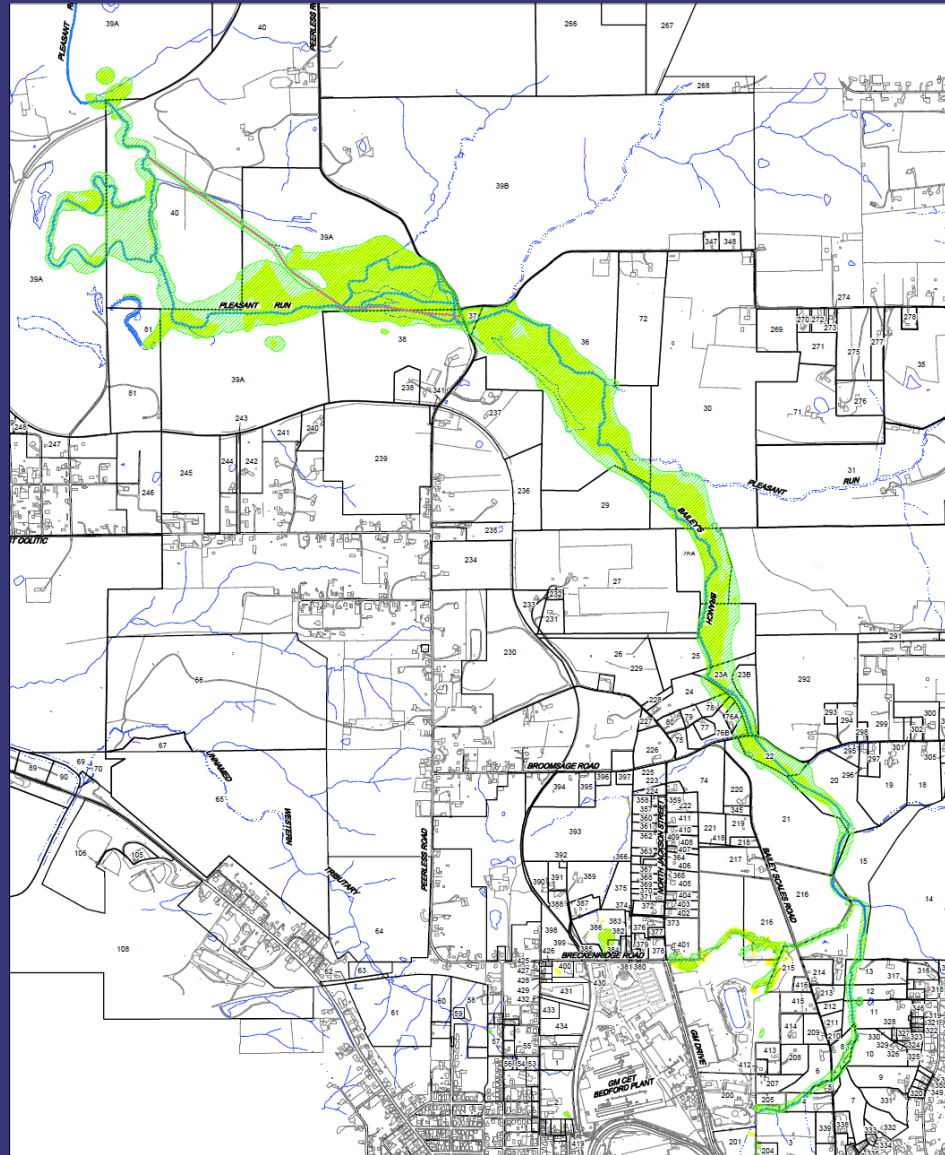
G M C E T B E D F O R D F A C I L I T Y , B E D F O R D , I N D I A N A





REMOVAL ACTION STATUS

G M C E T B E D F O R D F A C I L I T Y , B E D F O R D , I N D I A N A





INSPECTION OF DOWNSTREAM PARCELS

G M C E T B E D F O R D F A C I L I T Y , B E D F O R D , I N D I A N A

- Downstream monitoring and maintenance conducted in May and October 2015
- Restoration doing well
- Downstream monitoring is complete





CREEK REMEDIATION/RESTORATION STATUS WEST OF BAILEY SCALES ROAD

G M C E T B E D F O R D F A C I L I T Y , B E D F O R D , I N D I A N A





CREEK REMEDIATION/RESTORATION STATUS EAST OF BAILEY SCALES ROAD

G M C E T B E D F O R D F A C I L I T Y , B E D F O R D , I N D I A N A





CREEK REMEDIATION/RESTORATION STATUS PARCEL 22

G M C E T B E D F O R D F A C I L I T Y , B E D F O R D , I N D I A N A





CREEK REMEDIATION/RESTORATION STATUS PARCEL 76

G M C E T B E D F O R D F A C I L I T Y , B E D F O R D , I N D I A N A





CREEK REMEDIATION/RESTORATION STATUS PARCEL 36

G M C E T B E D F O R D F A C I L I T Y , B E D F O R D , I N D I A N A

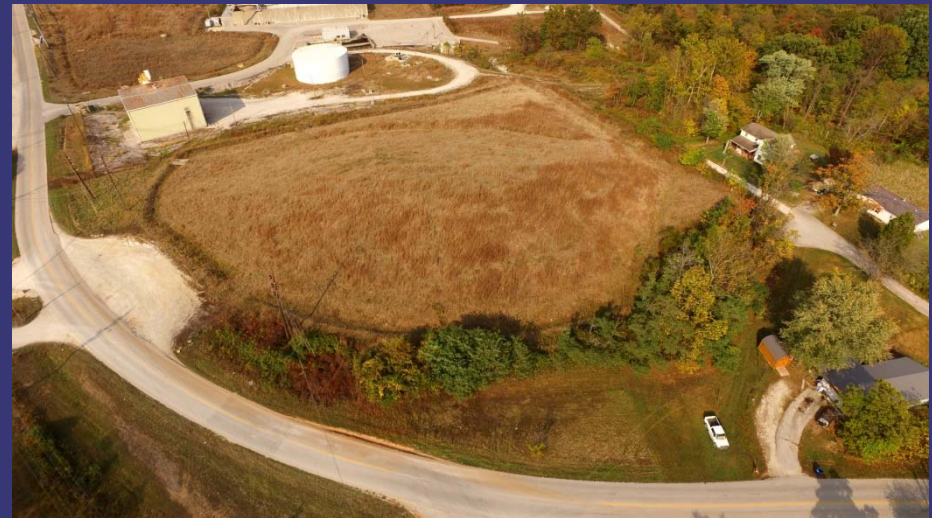




EAST/WEST PLANT MONITORING AND MAINTENANCE

G M C E T B E D F O R D F A C I L I T Y , B E D F O R D , I N D I A N A

- GM conducts quarterly inspections of the cover system which identified:
 - Large burrowing animals, likely groundhogs, needing to be trapped and relocated to an far off-site, wooded area.
 - Minor asphalt cracks (repairs planned beginning July 5 – to be coordinated to minimize disruption to GM CET activities).
- Plant wildflowers.
- Install perimeter fence.





VAULT OPERATION AND MAINTENANCE

G M C E T B E D F O R D F A C I L I T Y , B E D F O R D , I N D I A N A

- Continue to monitor leak detection system and leachate collection systems
- Submit Vault Annual Report
- Re-direct vault waters to new GWTP for treatment





SSC OPERATION AND MAINTENANCE

G M C E T B E D F O R D F A C I L I T Y , B E D F O R D , I N D I A N A

- Continued to operate SSC system
- Conduct treatment system maintenance
- Re-direct groundwater to new GWTP for treatment





EXISTING WATER TREATMENT PLANT

G M C E T B E D F O R D F A C I L I T Y , B E D F O R D , I N D I A N A

- Continue to treat SSC water and storm pond water
- Discharge is treated under NPDES permit managed by GM CET
- Transition operations of the storm pond water treatment to GM CET
- Decommission SSC water treatment portion of the facility





GROUNDWATER TREATMENT PLANT

G M C E T B E D F O R D F A C I L I T Y , B E D F O R D , I N D I A N A

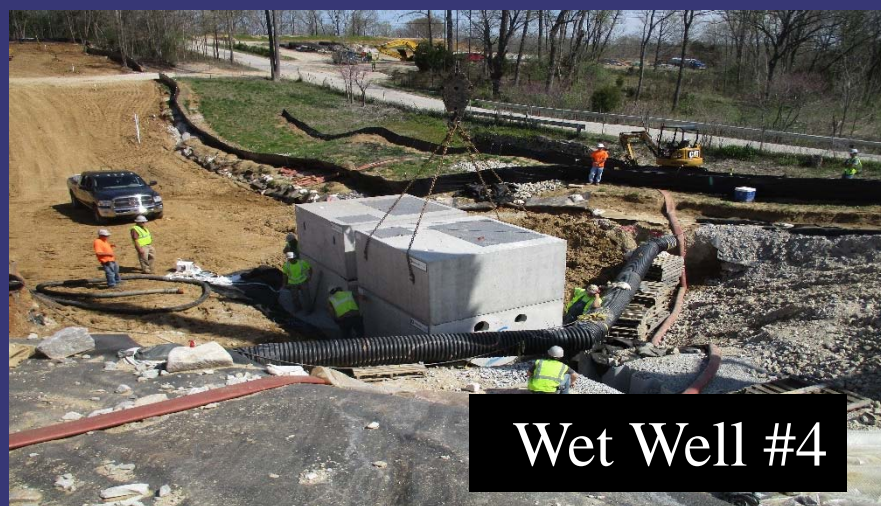
- Constructed to treat groundwater from perimeter trench and vault waters
- Plant commissioning is underway
- Discharge is treated under NPDES permit managed by GM Remediation





GWTP INPUTS

G M C E T B E D F O R D F A C I L I T Y , B E D F O R D , I N D I A N A

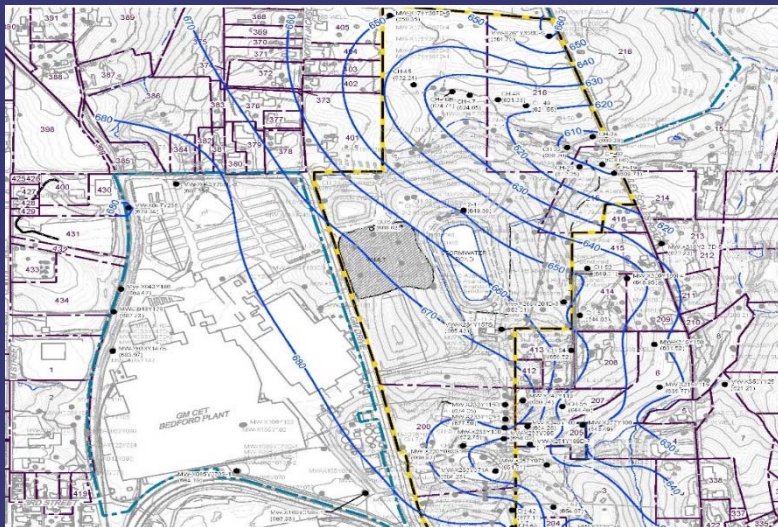




EI CA750 MONITORING

G M C E T B E D F O R D F A C I L I T Y , B E D F O R D , I N D I A N A

- Quarterly static groundwater level measurements collected
- EI CA750 sampling event conducted in May 2016 - results memo to U.S.EPA being developed
- Groundwater elevations appear to show no significant changes under the Cover System
- EI CA750 or pilot trench monitoring program will continue until a long term groundwater monitoring plan is in place
- Re-assess frequency and/or scope of monitoring

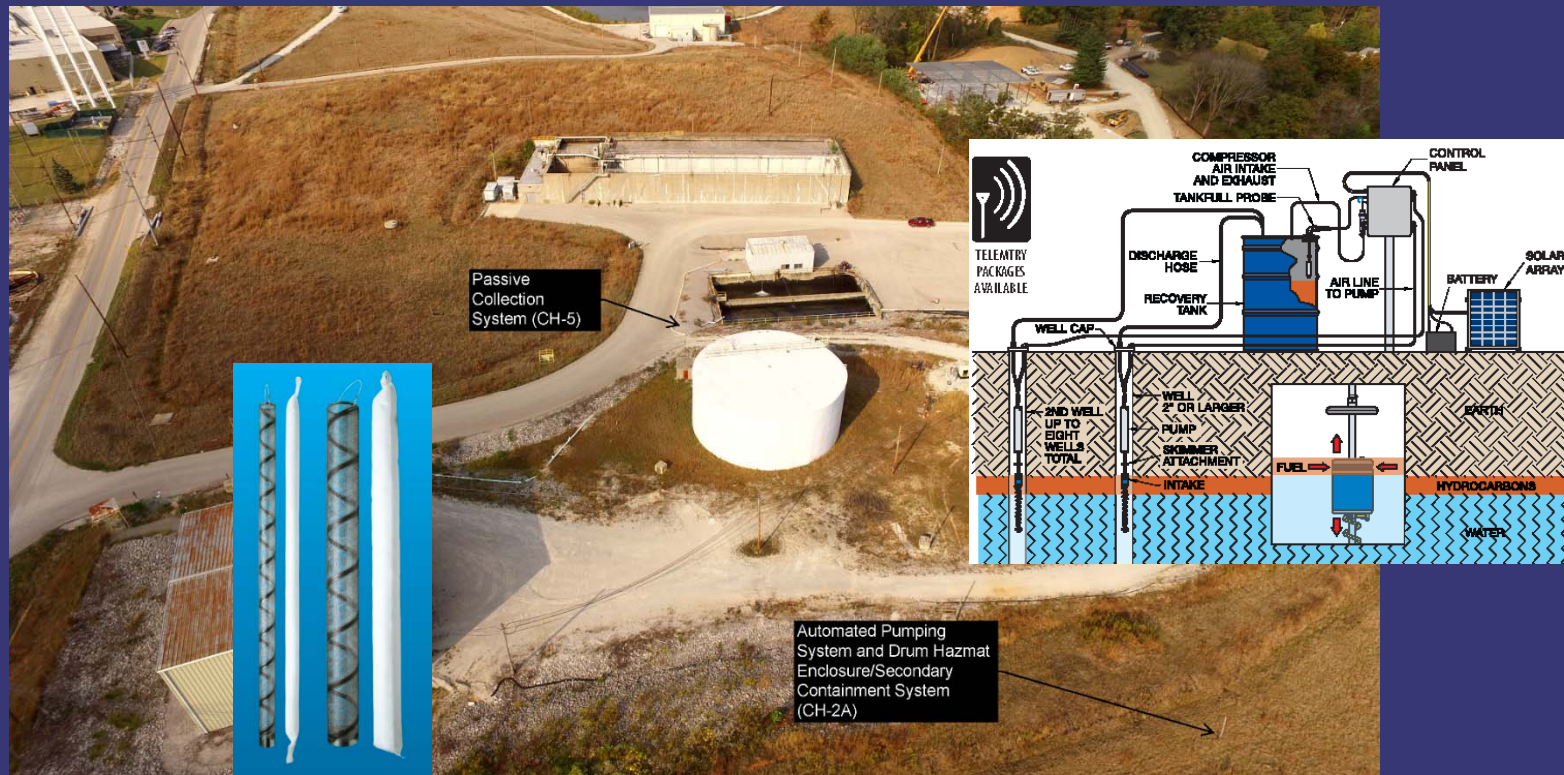




AOI 8 SYSTEM DESIGN

G M C E T B E D F O R D F A C I L I T Y , B E D F O R D , I N D I A N A

- Wiring controls are being designed.
- GM Remediation will coordinate installation schedule with GM CET.

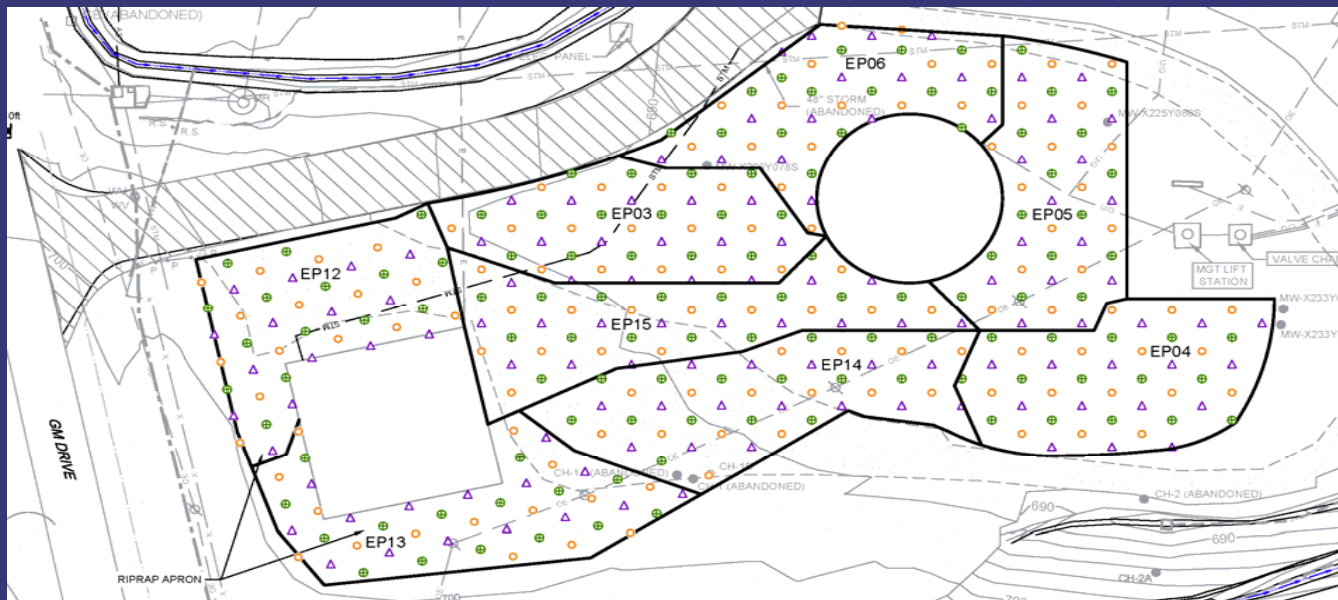




SURFACE SOIL SAMPLING

G M C E T B E D F O R D F A C I L I T Y , B E D F O R D , I N D I A N A

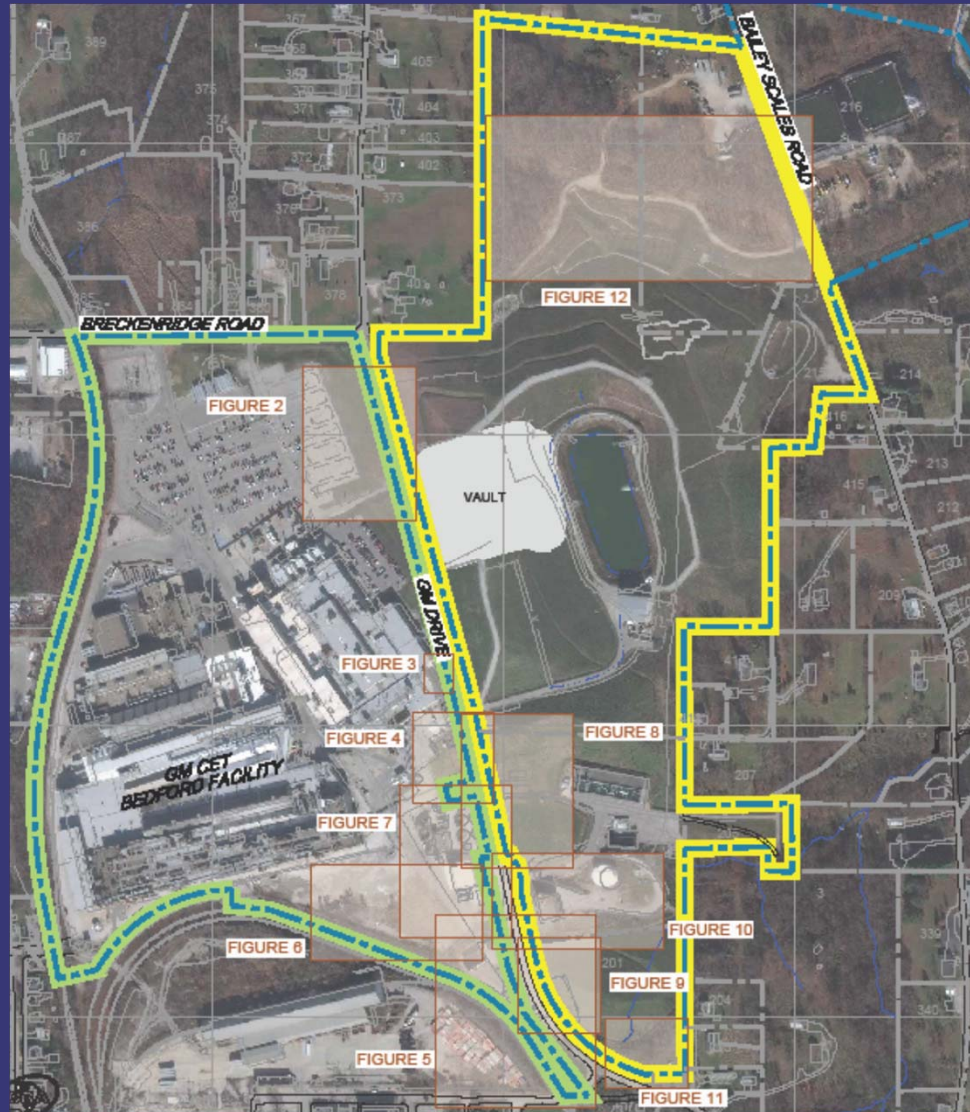
- Surface soil sampling will be conducted in select areas of the East Plant and West Plant Areas
- Sampling will target areas:
 - Not covered by East/West Plant Cover System
 - Not currently paved with hard surface maintained by Plant
 - Areas more prone to potential worker exposure
- Sampling to begin in July 2016





SURFACE SOIL SAMPLING

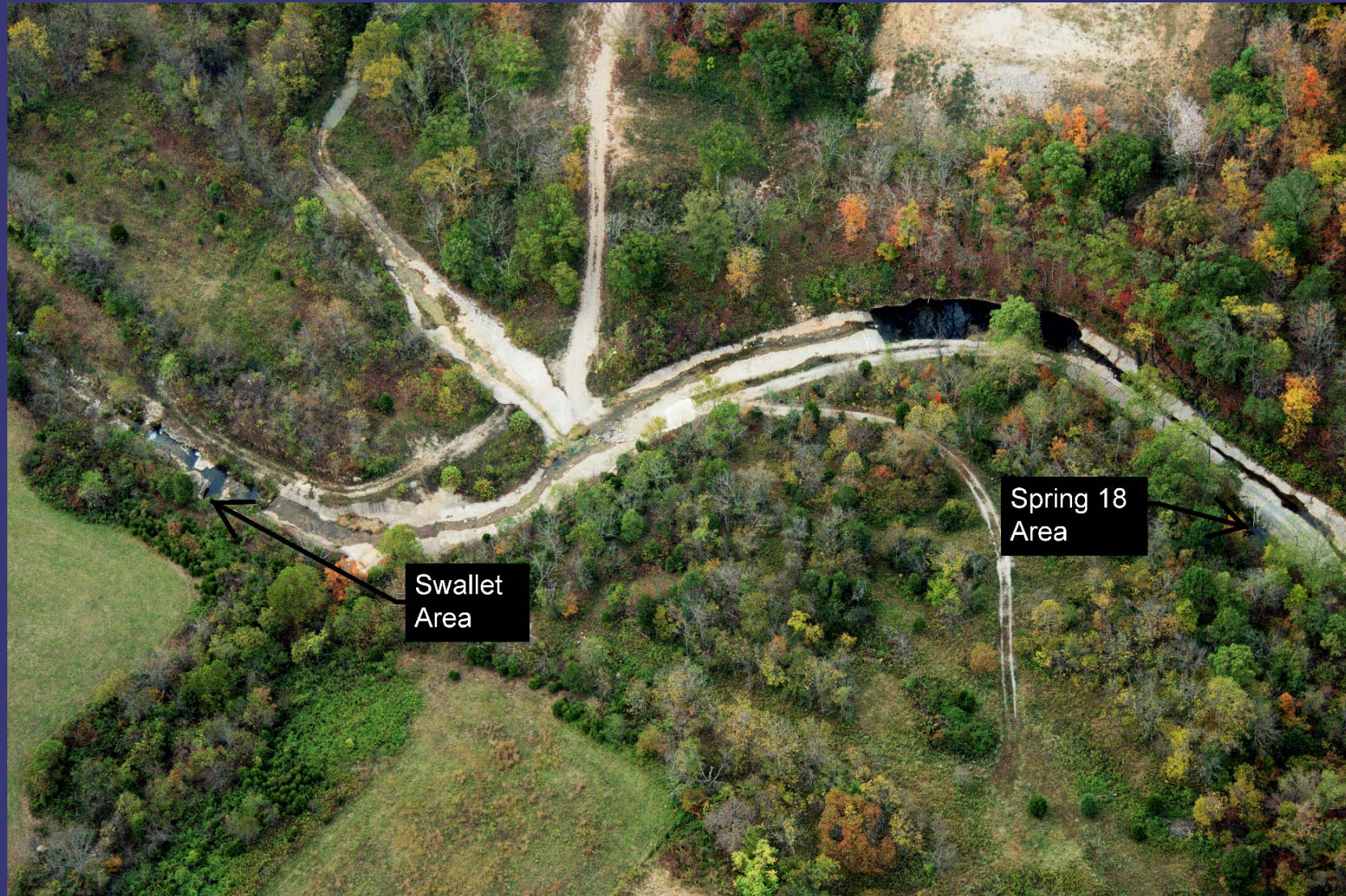
G M C E T B E D F O R D F A C I L I T Y , B E D F O R D , I N D I A N A





SPRING 18 AND SWALLET MONITORING

G M C E T B E D F O R D F A C I L I T Y , B E D F O R D , I N D I A N A





SPRING 18 AND SWALLET MONITORING

G M C E T B E D F O R D F A C I L I T Y , B E D F O R D , I N D I A N A

- Continue to collect monthly samples from Spring 18 and analyze for PCBs





SPRING 18 AND SWALLET MONITORING

G M C E T B E D F O R D F A C I L I T Y , B E D F O R D , I N D I A N A

- GM and U.S.EPA have negotiated a draft CERCLA AOC in order to conduct work in the creek – U.S.EPA drafting an Action Memorandum
- Potentially seal additional swallet found to be connected to Spring 18





- Delineation of the impacted area has been completed.
- GM Remediation will work with property owners to implement the prescriptive excavation plan.





PILOT PERIMETER GROUNDWATER TRENCH COLLECTION SYSTEM

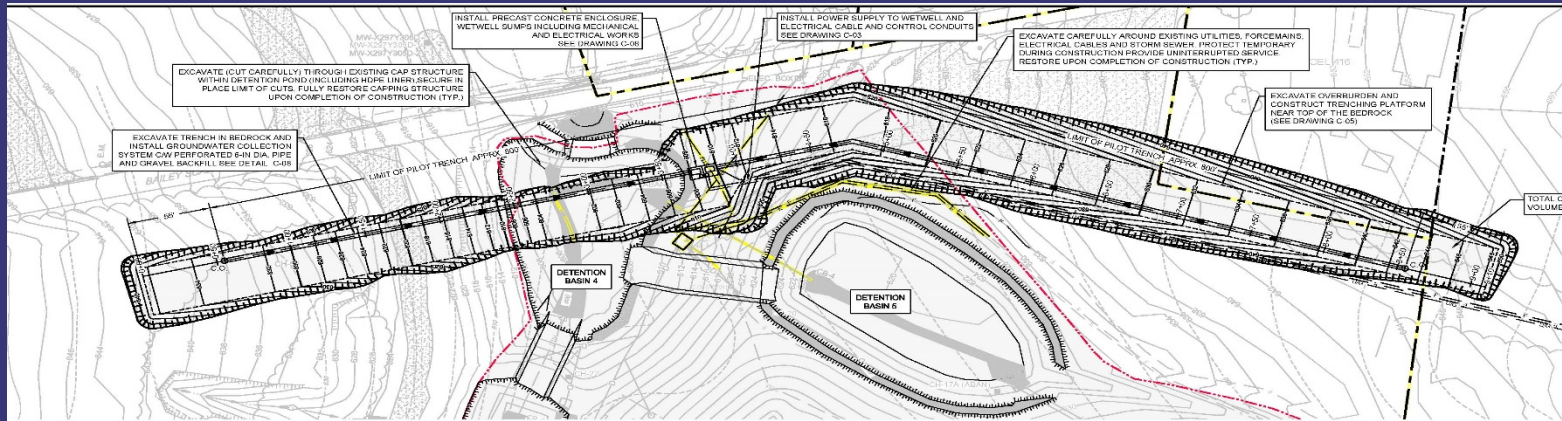
G M C E T B E D F O R D F A C I L I T Y , B E D F O R D , I N D I A N A

- Pilot perimeter groundwater trench collection system construction began in August 2015, with rock cutting completed in December.
- Construction of pipelines between the trench, GWTP and storm water WTP is completed.
- Trench components (vinyl sheeting, grout, perforated pipe, drain stone) is completed.
- Re-installation of the cover system (liner, common fill, topsoil) is completed. Seeding to follow.
- Wet Well #4 construction is completed.
- GM and GHD to develop a Pilot Study (pilot trench interim groundwater monitoring and operation schedule) to U.S.EPA within 60 days of the completion of the pilot

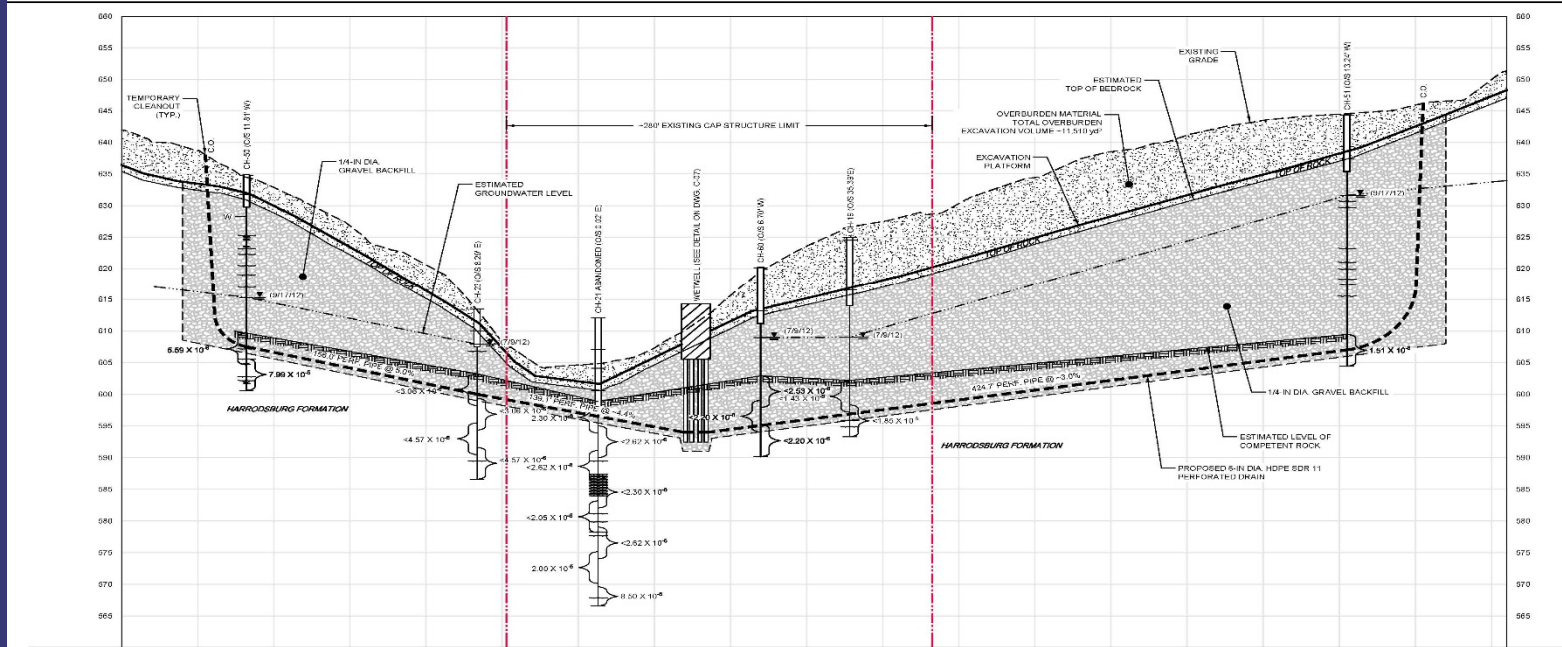


PILOT PERIMETER GROUNDWATER TRENCH COLLECTION SYSTEM

G M C E T B E D F O R D F A C I L I T Y , B E D F O R D , I N D I A N A



PLAN
SCALE: 1"=50'





PILOT PERIMETER GROUNDWATER TRENCH COLLECTION SYSTEM

G M C E T B E D F O R D F A C I L I T Y , B E D F O R D , I N D I A N A





PILOT PERIMETER GROUNDWATER TRENCH COLLECTION SYSTEM

G M C E T B E D F O R D F A C I L I T Y , B E D F O R D , I N D I A N A





PILOT PERIMETER GROUNDWATER TRENCH COLLECTION SYSTEM

G M C E T B E D F O R D F A C I L I T Y , B E D F O R D , I N D I A N A





PILOT PERIMETER GROUNDWATER TRENCH COLLECTION SYSTEM

G M C E T B E D F O R D F A C I L I T Y , B E D F O R D , I N D I A N A





STORMWATER POND SEDIMENT REMOVAL

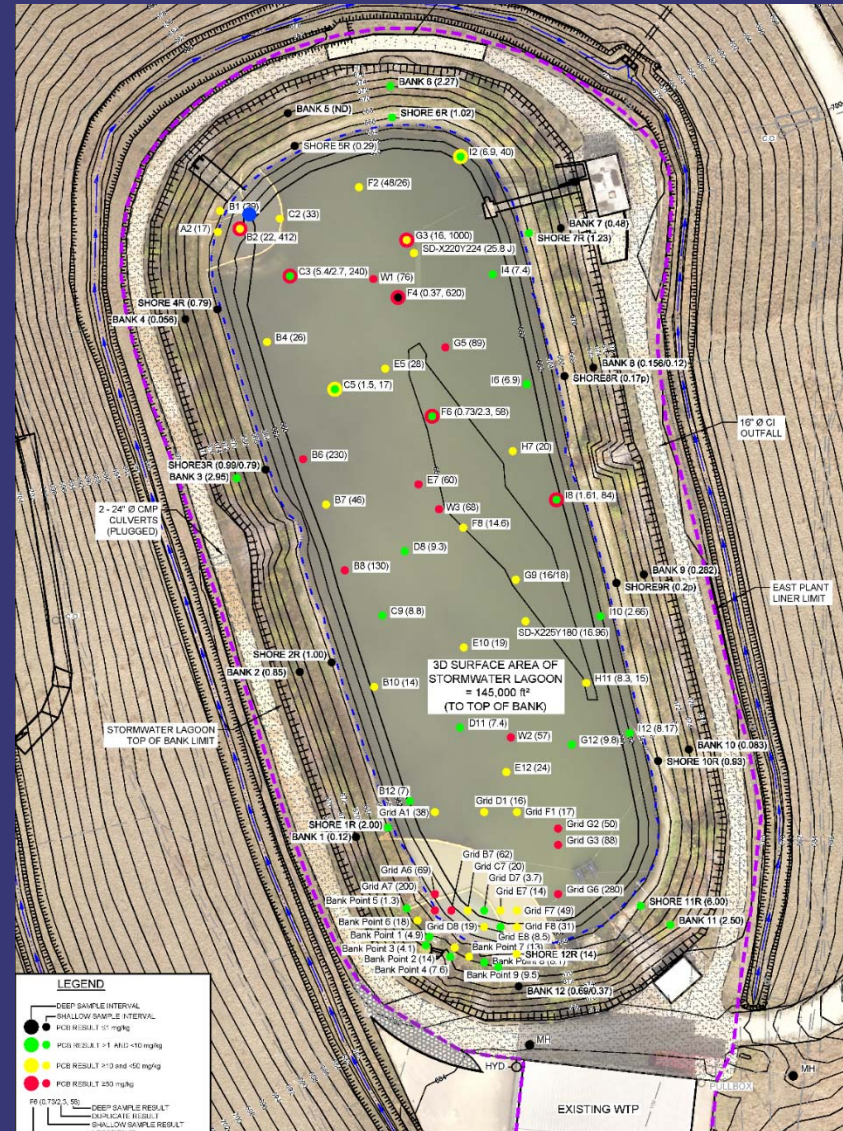
G M C E T B E D F O R D F A C I L I T Y , B E D F O R D , I N D I A N A

- Minimize vegetation (e.g. algae, leaves, wood, etc.)
- Minimize habitat (e.g. frogs, turtles, birds, fish, etc.)
- Minimize TSS/TDS (clean out storm sewers to address oil, aluminum, sediments, etc.)
- Clean up impacted sediments from the Stormwater Pond (7,600 cy of PCB impacted sediments, PCBs up to 1,000 ppm)
- Minimize velocities which could scour impacted fine sediments in the Stormwater Pond and thus minimizing O&M at the SWTP and compliance with the NPDES permit
- Maximize storage capacity to minimize compliance issues with the NPDES permit



STORMWATER POND SEDIMENT REMOVAL

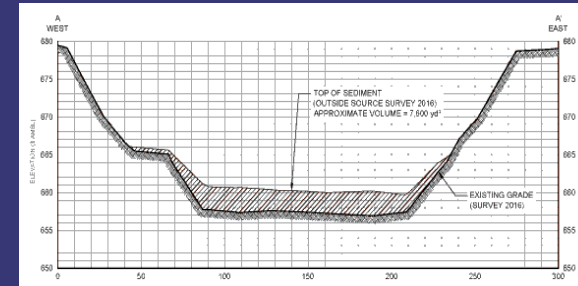
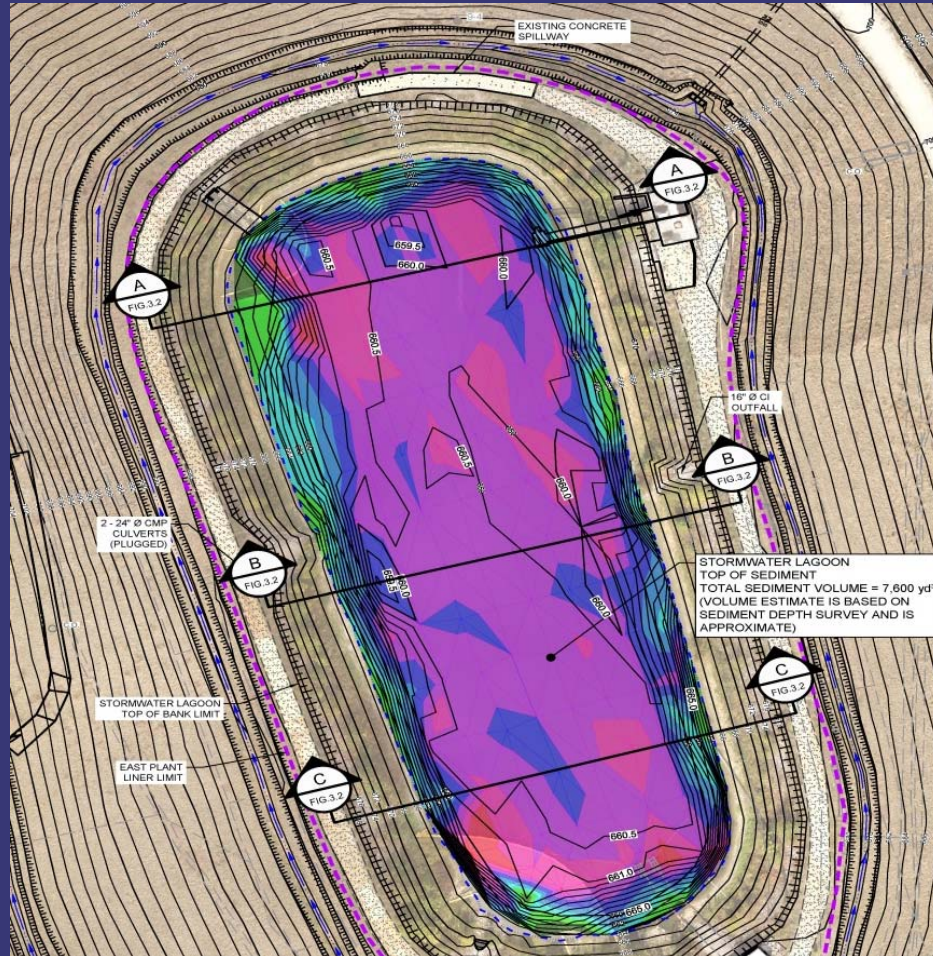
G M C E T B E D F O R D F A C I L I T Y , B E D F O R D , I N D I A N A



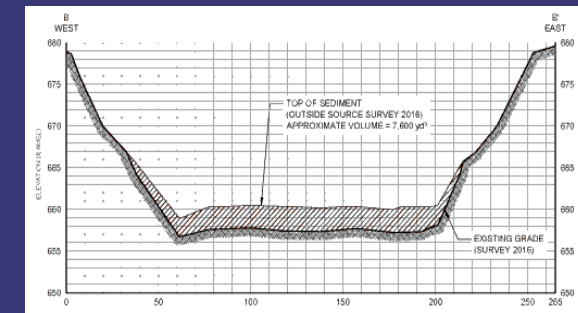


STORMWATER POND SEDIMENT REMOVAL

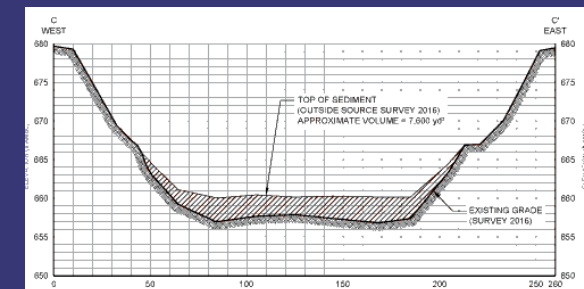
G M C E T B E D F O R D F A C I L I T Y , B E D F O R D , I N D I A N A



Cross-Section A-A'



Cross-Section B-B'



Cross-Section C-C'

Sediment Volume = 7,600 cy (6,080 to 9,120 tons)



STORMWATER POND SEDIMENT REMOVAL

G M C E T B E D F O R D F A C I L I T Y , B E D F O R D , I N D I A N A





COMMUNITY RELATIONS ACTIVITIES

G M C E T B E D F O R D F A C I L I T Y , B E D F O R D , I N D I A N A

- Community meetings have been held on a regular basis, currently meeting twice/year
 - Meetings will continue to be announced in the Bedford Times Mail
 - Presentations have been and will continue to be posted to the website and the library
 - People can always call Katie Kamm with questions: (812) 277-8954
- A CLP Meeting was held today
- Information from the presentations and meeting minutes are posted to the website



COMMUNITY RELATIONS ACTIVITIES

G M C E T B E D F O R D F A C I L I T Y , B E D F O R D , I N D I A N A

- Project website at:
<http://www.BedfordPowertrainCorrectiveAction.com>
- Quarterly Community Meetings are available on the website
- Final approved documents can be found on the project website
- Community Liaison Panel (CLP) – members listed in minutes on website
- Periodic information sessions – next meeting likely to be held December 2016.
- Periodic Project Fact Sheets (forty-one issued to date)
- Project Questions contact Katie Kamm: (812) 277-8954