



www.**CRA**world.com



REPORT

ANNUAL COMPLIANCE REPORT

EAST PLANT AREA TSCA VAULT
CALENDAR YEAR 2011
EPA ID# IND006036099

Prepared for: General Motors LLC

Conestoga-Rovers & Associates
651 Colby Drive
Waterloo, Ontario N2V 1C2
Canada

July 2012 • #013968 -(351)



**Worldwide Facilities Group
Remediation Team**

July 11, 2012

Reference No. 013968

Mr. Peter Ramanauskas
Project Manager for IND 006036099
Land and Chemicals Division
U.S. EPA Region 5
77 West Jackson Blvd. (LU-9J)
Chicago, IL 60604-3507

Dear Mr. Ramanauskas:

Re: Annual Compliance Report - East Plant Area TSCA Vault - Calendar Year 2011
GM CETC – Bedford Facility, IND 006036099
Voluntary RCRA Corrective Action
Bedford, Indiana

Enclosed for your review, please find a copy of the report entitled Annual Compliance Report, East Plant Area Vault: Calendar Year 2011. This document has been submitted by General Motors LLC (GM), to meet the requirements for annual reporting in accordance with the Conditions of Approval dated October 26, 2006.

Should you have any questions regarding this document, please do not hesitate to contact me at (313) 510-4328.

Yours truly,

General Motors LLC

A handwritten signature in cursive script that reads 'Cheryl R. Hiatt'.

Cheryl R. Hiatt
Project Manager

CRH/ck/140
Encl.

c.c.: See Attached Distribution List

GM Bedford Distribution List

		copy sent (y/n)
Brad Stimple	U.S. EPA, OSC	Yes
Gerald O'Callaghan (PDF)	IDEM Management	Yes
George Ritchotte	IDEM Office of Land Quality	Yes
Cheryl Hiatt/Ed Peterson	GM WFG Remediation	Yes
James McGuigan (PDF)	CRA Project Manager	Yes
Katie Kamm (PDF)	CRA Oversight Engineer	Yes
Rick Hoekstra (PDF)	CRA Design Engineer	Yes

TABLE OF CONTENTS

	<u>Page</u>
1.0 INTRODUCTION	1
1.1 PURPOSE AND ORGANIZATION OF REPORT	1
2.0 SUMMARY OF RECORD KEEPING LOG.....	3
2.1 DAILY WASTE INFORMATION SUMMARY	3
2.2 SUMMARY OF LCS, LDS, AND UNDERDRAIN SYSTEM LOGS.....	3
2.3 SUMMARY OF WATER TREATED IN THE WATER TREATMENT FACILITY	4
3.0 ANALYTICAL RESULTS	5
3.1 AIR MONITORING ANALYTICAL RESULTS	5
3.2 GROUNDWATER MONITORING ANALYTICAL RESULTS	5
3.3 LEACHATE AND LEAK DETECTION WATER MONITORING ANALYTICAL RESULTS	7
3.4 UNDERDRAIN ANALYTICAL RESULTS.....	7
3.5 WATER TREATMENT FACILITY ANALYTICAL RESULTS.....	7
4.0 LEACHATE AND LEAK DETECTION WATER DISPOSAL	8
5.0 SUMMARY AND REVIEW OF WATER ELEVATIONS	9
5.1 LEACHATE COLLECTION SYSTEM.....	9
5.2 LEACHATE DETECTION SYSTEM.....	10
5.3 GRAVEL UNDERDRAIN SYSTEM.....	10
6.0 SPILL CLEANUP REPORTS	11
7.0 FINANCIAL ASSURANCE.....	12
8.0 REFERENCES.....	13

LIST OF FIGURES
(Following Text)

FIGURE 3.1	GROUNDWATER SAMPLING LOCATIONS
FIGURE 3.2	EI CA750 GROUNDWATER ANALYTICAL RESULTS FOR PCBs FOR FIRST SEMI-ANNUAL EVENT OF 2011
FIGURE 3.3	EI CA750 GROUNDWATER ANALYTICAL RESULTS FOR PCBs FOR SECOND SEMI-ANNUAL EVENT OF 2011
FIGURE 5.1	SUMMARY OF AVERAGE MONTHLY VOLUME OF WATER REMOVED FROM LCS AND LDS

LIST OF TABLES
(Following Text)

TABLE 2.1	SUMMARY OF DAILY LCS LOG
TABLE 2.2	SUMMARY OF DAILY LDS LOG
TABLE 2.3	SUMMARY OF DAILY UNDERDRAIN SYSTEM LOG
TABLE 2.4	LCS, LDS, AND UNDERDRAIN MAXIMUM WATER ELEVATION SUMMARY
TABLE 3.1	SUMMARY OF TOTAL PCBs ANALYTICAL RESULTS FOR EI CA750 FIRST SEMI-ANNUAL GROUNDWATER SAMPLES
TABLE 3.2	SUMMARY OF TOTAL PCBs ANALYTICAL RESULTS FOR EI CA750 SECOND SEMI-ANNUAL GROUNDWATER SAMPLES
TABLE 3.3	LEACHATE COLLECTION SYSTEM MONITORING ANALYTICAL RESULTS
TABLE 3.4	LEAK DETECTION SYSTEM MONITORING ANALYTICAL RESULTS
TABLE 3.5	WATER TREATMENT PLANT MONITORING ANALYTICAL RESULTS

LIST OF TERMS AND ACRONYMS

Approval(s)	U.S. EPA and IDEM PCB Risk-Based Disposal Approvals
CA	Corrective Action
CFR	Code of Federal Regulations
CRA	Conestoga-Rovers & Associates, Inc.
CETC	Castings Engines Transmissions and Components
EQ tank	equalization tank
FA	Financial Assurance
Facility	GM CETC Bedford Facility in Bedford, Indiana
GM	General Motors LLC
HASP	Health and Safety Plan
IDEM	Indiana Department of Environmental Management
IM	Interim Measure
LCS	Leachate Collection System
LDS	Leak Detection System
mg/L	milligram-per-liter
NPDES	National Pollutant Discharge Elimination System
PCB	Polychlorinated biphenyl
ppm	part per million
QAPP	Quality Assurance Project Plan
RA	Removal Action
RCRA	Resource Conservation and Recovery Act
Report	East Plant Area Vault Annual Compliance Report Covering the Calendar Year of 2011
RFI	RCRA Facility Investigation
Site	Facility IM Work Areas
SSC	Site Source Control
TSCA	Toxic Substance Controls Act
U.S. EPA	United States Environmental Protection Agency
Vault	East Plant Area TSCA landfill vault
VOCs	Volatile organic compounds
WTP	Water Treatment Plant

1.0 INTRODUCTION

This Annual Compliance Report (Report) summarizes data from the calendar year of 2011 for the Toxic Substances Control Act (TSCA) landfill vault (Vault), located in the East Plant Area of the General Motors LLC (GM) Castings Engines Transmissions and Components (CETC, formerly Powertrain) Bedford Plant (Facility), in Lawrence County, Bedford, Indiana. This Report has been prepared by Conestoga-Rovers & Associates, Inc. (CRA) on behalf of GM in accordance with Condition 27 of the Conditions of Approval, presented in both the Risk-Based Polychlorinated Biphenyl (PCB) Disposal Approval and the TSCA Approval to Dispose PCBs (Approvals) issued by the Indiana Department of Environmental Management (IDEM) and the United States Environmental Protection Agency (U.S. EPA), respectively, on October 26, 2006, for the Vault. The Vault is part of the cleanup activities being conducted at the Facility under the East Plant Area Interim Measure (IM) and concurrent with other IMs at the Facility (Site). The Approvals were effective October 26, 2006, and were issued pursuant to 40 Code of Federal Regulations (CFR) § 761.61 (c) for the risk-based approval for disposal of PCB contaminated waste in the Vault. The Vault was constructed as a component of the East Plant Area IM during Resource Conservation and Recovery Act (RCRA) Corrective Action (CA) activities being conducted under a Performance-Based CA Agreement (effective March 20, 2001, and amended October 1, 2002, March 29, 2007, and May 9, 2008) for the Facility.

Final closure of the Vault occurred on March 27, 2012. A Post-Closure Plan (PCP) was submitted to U.S. EPA on February 3, 2012, which stated that the quantity of liquid collected from the leachate collection system (LCS), leak detection system (LDS), and gravel underdrain system (GUS), and the water elevations in these systems, analytical results from samples collected from these systems, and effluent quantity/quality from the water treatment plant (WTP) will continue to be recorded; however, the frequency would be reduced to monthly, or less as described in the PCP. Prior to closure of the Vault, monitoring requirements were performed in accordance with the aforementioned Vault Approvals. Consistent with the recently submitted PCP, the next annual report covering pre- and post-closure monitoring data for the calendar year of 2012 will be submitted to U.S. EPA on or before July 15, 2013.

1.1 PURPOSE AND ORGANIZATION OF REPORT

This Report presents the requirements for current annual reporting in compliance with the conditions of the Approvals by U.S. EPA and IDEM for the Vault.

This Report is organized as follows:

Section 2.0 - Summary of Record Keeping Log

This section provides a summary of the daily waste/soil information, quantity of liquid collected from the LCS, LDS, and the GUS, water elevation in the GUS and over the primary liner, and the amount of water treated in the Site Source Control (SSC) WTP.

Section 3.0 - Analytical Results

This section provides all analytical results from the monitoring of the air, groundwater, LCS, LDS, GUS, and the water treatment facility.

Section 4.0 - Leachate and Leak Detection Water Disposal

This section provides details related to the volume, PCB concentration, and disposal destination for leachate and leak detection water with a PCB concentration equal to or greater than (\geq) 1 part per million (ppm).

Section 5.0 - Summary of Water Elevation

This section provides a summary of the water elevation over the primary liner and in the GUS.

Section 6.0 - Spill Cleanup Reports

This section identifies any PCB spill cleanups that occurred outside of the Exclusion Zone established in accordance with the Site Health and Safety Plan (HASP).

Section 7.0 - Financial Assurance

This section discusses the future financial assurance for the Vault.

Section 8.0 - References

This section presents references cited in this Report.

2.0 SUMMARY OF RECORD KEEPING LOG

The following information was recorded as required by Condition 25 of the Approvals:

- a) Daily waste information:
 - i) Identification of the source of excavated material
 - ii) Estimated quantity of material excavated and placed in the Vault
- b) The quantity of liquid collected from the LCS
- c) The quantity of liquid collected from the LDS
- d) The quantity of liquid collected from the underdrain
- e) The water elevation in the underdrain and over the primary liner
- f) The amount of water (liquid) treated in the water treatment facility and the PCB concentration (if known)

2.1 DAILY WASTE INFORMATION SUMMARY

Placement of all the ≥ 50 mg/kg PCB impacted soil within the Vault was completed on September 27, 2008. A summary of the daily waste information for all PCB material placed in the Vault was presented in the Annual Compliance Report for the East Plant Area Vault Covering Calendar Years 2006, 2007, and 2008 (CRA, June 2009), which was submitted to U.S. EPA on June 24, 2009.

2.2 SUMMARY OF LCS, LDS, AND UNDERDRAIN SYSTEM LOGS

The water levels in the LCS, LDS, and GUS have been monitored on a daily basis since the start of operation commencing on August 30, 2006; with the exception that water levels were not recorded on weekends (i.e., Saturday and/or Sunday) or holidays, and with some additional exceptions due to weather, access limitations, and/or equipment malfunctions. The locations of the LCS, LDS, and GUS manholes can be found on Figure 3.1. Summaries of the daily water levels for the LCS, LDS, and GUS are presented in Tables 2.1, 2.2, and 2.3, respectively. This monitoring was done on a daily basis by Severson Environmental Services as part of their East Plant Area construction activities and reported to CRA. A summary of the maximum water elevation in each of the systems for each month of 2011 is presented in Table 2.4. Further discussion regarding the water elevations can be found in Section 5 of this Report.

**2.3 SUMMARY OF WATER TREATED IN THE WATER
TREATMENT FACILITY**

Water removed from the Vault sumps is directed via permanent forcemain to the equalization tank (EQ tank) located south of the SSC WTP, where it is combined with water from three groundwater collection system wet wells prior to treatment in the SSC WTP. The effluent from the SSC WTP was sampled monthly under the National Pollutant Discharge Elimination System (NPDES) permit (NPDES Permit No. IN0003573) to discharge at Outfall 003 and data collected during the 2011 calendar year were reported according to the permit.

The amount of water treated in and discharged from the SSC WTP is recorded daily. A summary of the total monthly volume and daily average of treated water in the SSC WTP for 2011 is provided in Table 2.5.

3.0 ANALYTICAL RESULTS

All sampling and analysis was performed in accordance with the Quality Assurance Project Plan (QAPP) Addendum No. 2 (CRA, July 19, 2006) for the RCRA CA Work Plans and IMs, and the Removal Action (RA) Work Plans.

3.1 AIR MONITORING ANALYTICAL RESULTS

The air monitoring program was terminated on October 7, 2008, as approved by U.S. EPA (formal request was submitted October 29, 2008). No air monitoring was conducted for Vault activities performed in 2011.

3.2 GROUNDWATER MONITORING ANALYTICAL RESULTS

Groundwater sampling proximate to the TSCA Vault did not occur through 2011. Groundwater samples are collected at the perimeter of the Facility on a semi-annual basis under the Environmental Indicator (EI) CA750 sampling program, which is part of the RCRA CA for the Facility. Groundwater sampling locations, under the EI CA750, in the vicinity of the Vault are presented on Figure 3.1.

The first semi-annual EI CA750 groundwater sampling in 2011 was completed March 14 through April 15, 2011, and the second semi-annual sampling event was completed December 6th through December 16th, 2011.

The first semi-annual sampling event of 2011 resulted in PCB detections at four of the EI CA750 sampling locations. Detections for PCBs were noted at CH-42, CH-42A, CH-43 approximately 1,600 feet south of the Vault, and MW-X315Y115 approximately 1,300 feet west of the East Plant Area (southwest of the Vault) at total PCB concentrations of 0.11J, 0.11J, 0.28, and 0.18J µg/L, respectively. The reporting limit was generally 0.20 µg/L. CH-43 had a previous detection noted during the October/November 2008 sampling event. Detections at other wells with historical detections, CH-9A, CH-44, and MW-X047Y236 were not observed during this event. To confirm the validity of the PCB detections during the first semi-annual event, re-sampling was conducted at CH-42, CH-42A, CH-43, and MW-X315Y115. On June 3, 2011, bladder pumps were installed in the four wells and the following week, groundwater samples were collected from each location using the no-purge method and the low-flow method. Groundwater analytical results from these samples showed detections of total PCBs at two of the four locations, again at concentrations below the reporting limit (CH-42A and CH-43). CH-42A

exhibited a total PCB concentration of 0.14J $\mu\text{g}/\text{L}$ in the no-purge sample and 0.069J and 0.056J $\mu\text{g}/\text{L}$ (parent and duplicate) for the low-flow samples. CH-43 exhibited a total PCB concentration of 0.095J $\mu\text{g}/\text{L}$ for the no-purge sample and 0.086J $\mu\text{g}/\text{L}$ for the low-flow samples. The analytical results for dissolved PCBs were non-detect for these two locations. The analytical results for the other two wells sampled in June 2011 (CH-42 and MW-X315Y115) were non-detect for all submitted analyses. Analytical results for PCBs for the first semi-annual sampling event of 2011 is summarized in Table 3.1. Figure 3.2 presents databoxes of the PCBs sampling locations in the EI CA750 monitoring for groundwater and surface water analytical results for the first semi-annual sampling event of 2011.

The second semi-annual EI CA750 groundwater sampling event of 2011 resulted in the detection of PCBs at five sampling locations, CH-9A, CH-42A, MW-X060Y304, MW-X277Y100, and Tributary 3-3, at total PCB concentrations of 1.4, 0.16J/0.13J, 0.085J, 0.12J $\mu\text{g}/\text{L}$, and 0.11J, respectively. CH-42A had a previous detection noted during the March/April 2011 sampling event. Detections at other wells with previous historical detections, (CH-42, CH-43, CH-44, MW-X315Y115 and MW-X047Y236) were not observed during this event. With the exception of the PCB result from CH-9A which has previously had a sheen detected during drilling at the location all of the detections of PCBs during this sampling event were well below the Maximum Contaminant Level (MCL) of 0.5 $\mu\text{g}/\text{L}$ and were all estimated concentrations. The reporting limit was generally 0.19 to 0.22 $\mu\text{g}/\text{L}$. Detections of PCBs in groundwater samples from monitoring wells MW-X060Y304 and MW-X277Y100, and surface water location Tributary 3-3 were not consistent with previous non-detect analytical results. Monitoring well MW-X277Y100 was resampled on January 27, 2012, using low-flow purging techniques. Samples were submitted to the previous laboratory, Test America Laboratory (TAL) for analysis of PCBs and TCL SVOCs. A replicate sample was also submitted to Trimatrix Laboratories in Grand Rapids, MI for the same analyses. The analytical results from TAL indicated non-detect for PCBs. The analytical result for the replicate sample from Trimatrix was 0.12J $\mu\text{g}/\text{L}$ for PCBs. It should be noted that cleaning of the detention basins was being completed prior to and during this sampling event and that the low-level detection at Tributary 3-3 may be a remnant of those activities. Analytical results for PCBs for the second semi-annual sampling event of 2011 is summarized in Table 3.2. Figure 3.3 presents databoxes of the sampling locations in the EI CA750 monitoring for groundwater and surface water analytical results for the second semi-annual sampling event of 2011.

3.3 LEACHATE AND LEAK DETECTION WATER MONITORING ANALYTICAL RESULTS

Water from the LCS and LDS was sampled monthly for PCBs before being sent to the SSC WTP, as required by Condition 8 of the Approval. All analytical data for samples collected from the LCS and LDS in 2011 are presented in Tables 3.3 and 3.4, respectively. The LCS samples were analyzed for volatile organic compounds (VOCs) and PCBs, while LDS samples were only analyzed for PCBs. No samples collected from the LCS and LDS exhibited results with PCB concentrations ≥ 1 milligram per liter (mg/L), therefore there was no TSCA material to report, in compliance with the October 26, 2006, approval. All water pumped from the LCS and LDS was treated in the on-Site SSC WTP during 2011.

3.4 UNDERDRAIN ANALYTICAL RESULTS

There were no samples collected from the GUS in 2011. Perforated drain pipes beneath the base of the Vault collect bedrock groundwater beneath the Vault and direct it to a sump located outside (i.e., north side) the Vault footprint. Groundwater collected in the GUS sump was directed for treatment at the SSC WTP. There have not been conditions at the LCS or LDS to warrant sampling of the GUS. Analytical results for samples collected from the SSC WTP are discussed in the following section.

3.5 WATER TREATMENT FACILITY ANALYTICAL RESULTS

In 2011, water removed from the LCS and LDS (no water was removed from the GUS sump) was directed via permanent forcemain to the SSC WTP for treatment. With the exception of July, monthly samples were collected of the effluent from the SSC WTP, under the NPDES permit (NPDES Permit No. IN0003573) prior to discharge at Outfall 003, and the data have been reported according to the permit. The SSC WTP was not operational during the entire month of July 2011 to allow for the change of the granular activated carbon in all six of the treatment vessels, therefore there was no effluent to be sampled. The analytical results for monthly samples collected from the SSC WTP effluent in 2011 are presented in Table 3.5.

4.0 **LEACHATE AND LEAK DETECTION WATER DISPOSAL**

There were no analytical results with ≥ 1 mg/L PCBs for water samples collected from the LCS or LDS during the calendar year of 2011. All of the pumped leachate and leak detection water was treated in the SSC WTP.

5.0 SUMMARY AND REVIEW OF WATER ELEVATIONS

The water level over the primary liner (LCS), and in the LDS and GUS continued to be monitored daily (with exceptions of holidays and weekends) throughout 2011, with the exception of November when there was an equipment malfunction and water levels in the sumps could not be measured. Accumulated water continues to be transported via forcemain and discharged for treatment to the on-Site SSC WTP, as required in the October 26, 2006, Approval. In addition, the LDS is monitored and manually pumped, when necessary, to maintain the levels below the base of the Vault. As previously described in Section 2.2, a summary of the water elevation above the primary liner (LCS), in the LDS, and in the GUS are presented in Tables 2.1, 2.2, and 2.3, respectively. Summaries of the maximum monthly water elevations in each system are presented in Table 2.4. A summary of the average monthly volume of water removed from LCS and LDS since initial operation of the systems is presented on Figure 5.1.

Ongoing construction of the East Plant Area Cover System in the vicinity of the Vault limited access to the lines connecting the sumps to the SSC WTP as the lines were temporarily removed and/or disconnected during grading completion and sump extension operations. In addition, during the later-part of 2011, some liquid was maintained in the LCS and GUS to facilitate planned testing of the programmable logic controllers (PLCs), which were to be installed to automate the level controls on the pumping hook-ups to the SSC WTP during final closure. Similarly, construction activities in proximity to the sump for the LCS prevented access and pumping of the LDS. These scheduling conflicts along with weather delays were previously cited in the Vault Closure: Addendum letter dated January 4, 2012.

5.1 LEACHATE COLLECTION SYSTEM

Pumping of water in the LCS occurred on two occasions in 2011 (on April 12 and July 16) for the purpose of checking the pump equipment (e.g., pump motor, hoses, etc.). Approximately 0.1 feet (21 gal.) of water was removed each time pump checking occurred at the LCS manhole. There was no significant pumping performed at the LCS in 2011.

Pumps were permanently installed in the LCS sump in November 2008; however, they were not connected to the forcemain due to ongoing construction within the East Plant Area. The LCS pumps require approximately 2 to 3 feet of water depth in order to keep the pump motors submerged to prevent the pumps from overheating, so pumping has historically not been conducted until 4 to 6 feet of water was present in the LCS sump.

The depth of water in the LCS rose from 4.57 feet to 8.47 feet over the calendar year of 2011, which represents a volume of 825 gal. Therefore, the total amount of water accumulated in the LCS in 2011 was 867 gal., including the 21 gallons that were pumped during each of the pump checking operations.

5.2 LEACHATE DETECTION SYSTEM

Pumping at the LDS, via a temporary pump, occurred on three occasions in 2011 (on April 12, May 16, and July 16), with the first two occasions removing 0.7 feet (148 gal.) and 0.5 feet (106 gal.), respectively, while the third occasion was solely for the purpose of checking the pump equipment (e.g., pump motor, hoses, etc) such that only 0.1 feet (21 gal.) was removed. The total amount of water removed from the LDS during the first half of 2011 was approximately 275 gallons, with the amount of accumulation within the LDS sump during the remainder of 2011 being 2.0 feet (423 gal.). During 2011, the depth of water in the LDS was typically maintained between 0.60 and 1.50 feet of water, with the water depth rising to 2.89 feet by the end of 2011 due to the inability to access the LDS for pumping until early in 2012.

5.3 GRAVEL UNDERDRAIN SYSTEM

A permanent pump (3-foot long vertical pump) was installed in the underdrain sump in November 2008, which requires the pump to remain submerged by at least 3 feet of water at all times in order to prevent overheating of the pump motor. Water depth in the GUS was maintained between approximately 6.6 feet and 7.0 feet for all of 2011, likely representing the typical groundwater level beneath the Vault. Changes in measured depths observed over the year were likely the result of inaccuracies in measurements between different SES employees and additions of riser sections to the GUS as soil work was completed near the sump. Riser additions noted to be 5 feet in length may have, for example, had actual dimensions of 5 feet 2 inches. An elevation survey of the top riser and total depth at the completion of the construction will provide more consistent readings moving forward.

6.0 SPILL CLEANUP REPORTS

There were no on-Site PCB spills that occurred outside or inside the Exclusion Zone that was established in accordance with the Site HASP (CRA, August 2008). Additionally, there were no spills on public roads.

7.0 **FINANCIAL ASSURANCE**

Remedial construction of the IMs for the East Plant Area, which includes the Vault, is continuing at the Site. The Approvals from U.S. EPA TSCA and IDEM established that, "The financial assurance (FA) mechanism can be part of the financial assurance mechanism developed for the East Plant Area or the final Corrective Measures". GM continues to elect to obtain the FA mechanism for the Vault as part of the FA for the final Corrective Measures for the Facility. Upon construction completion of the Corrective Measures for the Site, FA will be established for all operation, maintenance, and monitoring activities.

8.0 **REFERENCES**

CRA, Annual Compliance Report, East Plant Area Vault, Calendar Years 2006, 2007, and 2008, June 24, 2009.

CRA, Consolidated GM Bedford Health and Safety Plan (HASP), August 2008.

CRA, Modification Request to the Ambient Air Quality Monitoring Plan (AAQMP), correspondence on October 29, 2008.

CRA, Quality Assurance Project Plan (QAPP) Resource Conservation and Recovery Act (RCRA) Facility Investigation and Removal Action Work Plan: Addendum No. 2, July 19, 2006.

CRA, Post-Closure Plan (PCP) Bedford Plant Vault, February 3, 2012.

Hiatt, Cheryl, Notice of East Plant Area TSCA Vault Closure: Addendum, correspondence on January 4, 2012.

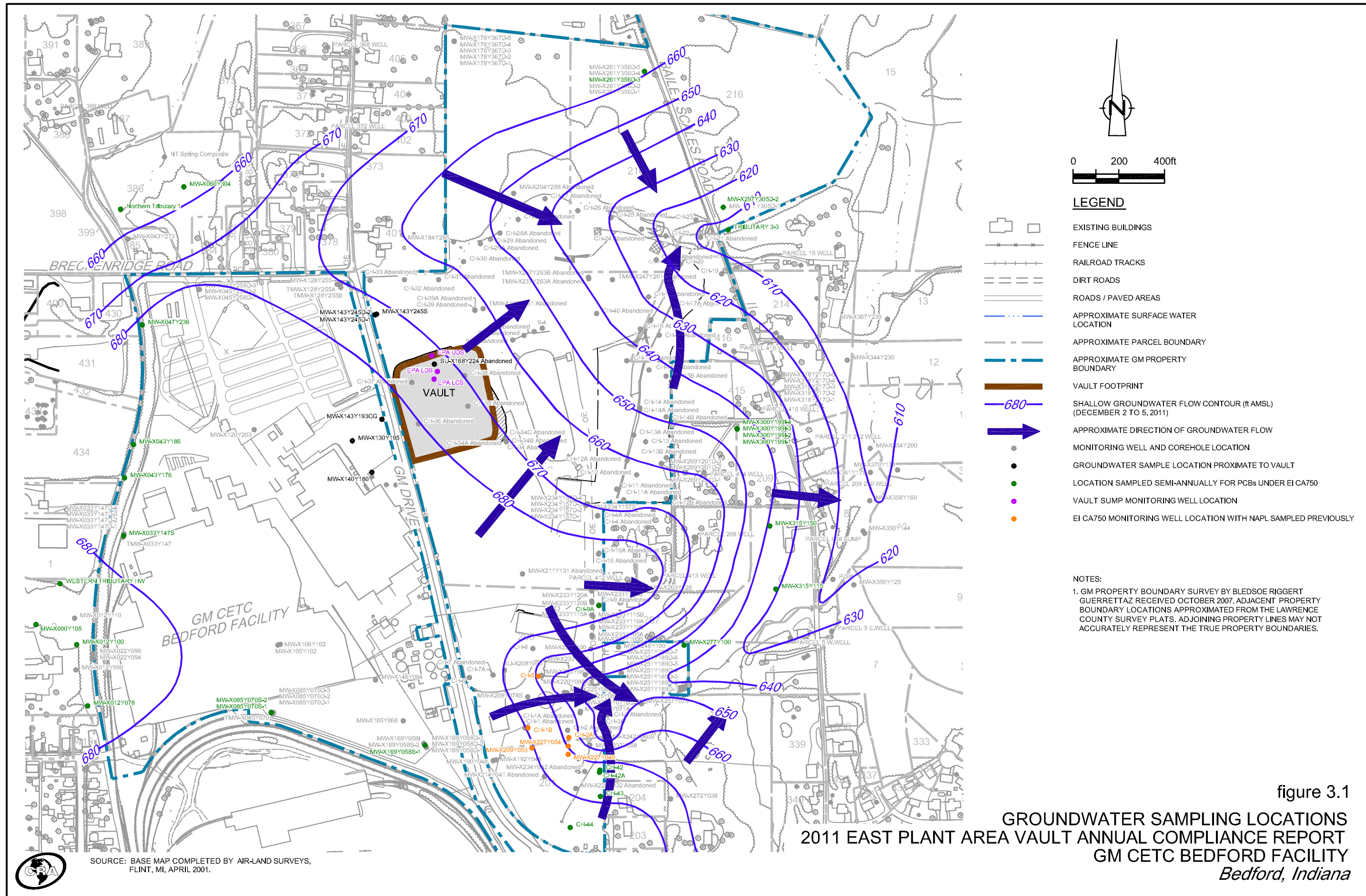
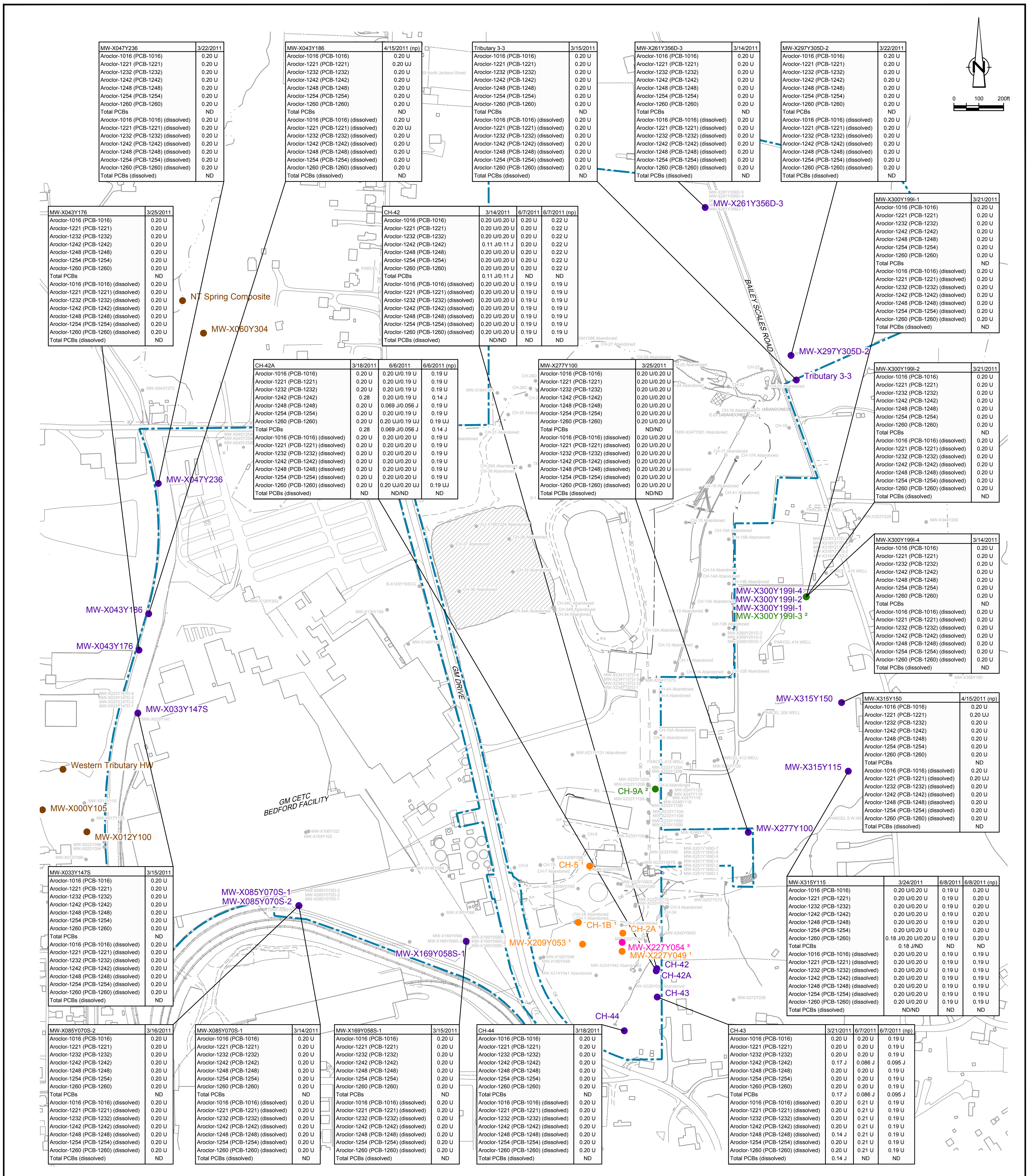


figure 3.1

GROUNDWATER SAMPLING LOCATIONS
2011 EAST PLANT AREA VAULT ANNUAL COMPLIANCE REPORT
GM CETC BEDFORD FACILITY
Bedford, Indiana

SOURCE: BASE MAP COMPLETED BY AIR-LAND SURVEYS, FLINT, MI, APRIL 2001.





Well ID	Date	Sample Type	Concentration (µg/L)	Chemical Name
MW-X033Y147S	3/15/2011	Parent Sample	0.20 U	Aroclor-1016 (PCB-1016)
MW-X033Y147S	3/15/2011	Parent Sample	0.20 U	Aroclor-1221 (PCB-1221)
MW-X033Y147S	3/15/2011	Parent Sample	0.20 U	Aroclor-1232 (PCB-1232)
MW-X033Y147S	3/15/2011	Parent Sample	0.20 U	Aroclor-1242 (PCB-1242)
MW-X033Y147S	3/15/2011	Parent Sample	0.20 U	Aroclor-1248 (PCB-1248)
MW-X033Y147S	3/15/2011	Parent Sample	0.20 U	Aroclor-1254 (PCB-1254)
MW-X033Y147S	3/15/2011	Parent Sample	0.20 U	Aroclor-1260 (PCB-1260)
MW-X033Y147S	3/15/2011	Parent Sample	ND	Total PCBs
MW-X033Y147S	3/15/2011	Parent Sample	0.20 U	Aroclor-1016 (PCB-1016) (dissolved)
MW-X033Y147S	3/15/2011	Parent Sample	0.20 U	Aroclor-1221 (PCB-1221) (dissolved)
MW-X033Y147S	3/15/2011	Parent Sample	0.20 U	Aroclor-1232 (PCB-1232) (dissolved)
MW-X033Y147S	3/15/2011	Parent Sample	0.20 U	Aroclor-1242 (PCB-1242) (dissolved)
MW-X033Y147S	3/15/2011	Parent Sample	0.20 U	Aroclor-1248 (PCB-1248) (dissolved)
MW-X033Y147S	3/15/2011	Parent Sample	0.20 U	Aroclor-1254 (PCB-1254) (dissolved)
MW-X033Y147S	3/15/2011	Parent Sample	0.20 U	Aroclor-1260 (PCB-1260) (dissolved)
MW-X033Y147S	3/15/2011	Parent Sample	ND	Total PCBs (dissolved)

LEGEND

- EXISTING BUILDINGS
- FENCE LINE
- RAILROAD TRACKS
- DIRT ROADS
- ROADS / PAVED AREAS
- APPROXIMATE SURFACE WATER LOCATION
- APPROXIMATE GM PROPERTY BOUNDARY
- APPROXIMATE PARCEL BOUNDARY
- VAULT FOOTPRINT
- GROUNDWATER SAMPLE LOCATION
- MARCH-APRIL 2011 EI CA750 SAMPLING SUMMARY LOCATION
- RACER TRUST LOCATION
- MONITORING WELL LOCATION WITH NAPL SAMPLED PREVIOUSLY
- MONITORING WELL LOCATION DRY
- MONITORING WELL DID NOT ACHIEVE PARAMETER STABILIZATION NAPL SAMPLED PREVIOUSLY

SCALE VERIFICATION

THIS BAR MEASURES 1" ON ORIGINAL. ADJUST SCALE ACCORDINGLY.

Approved: _____

GM CETC BEDFORD FACILITY
BEDFORD, INDIANA

2011 EAST PLANT AREA VAULT ANNUAL COMPLIANCE REPORT

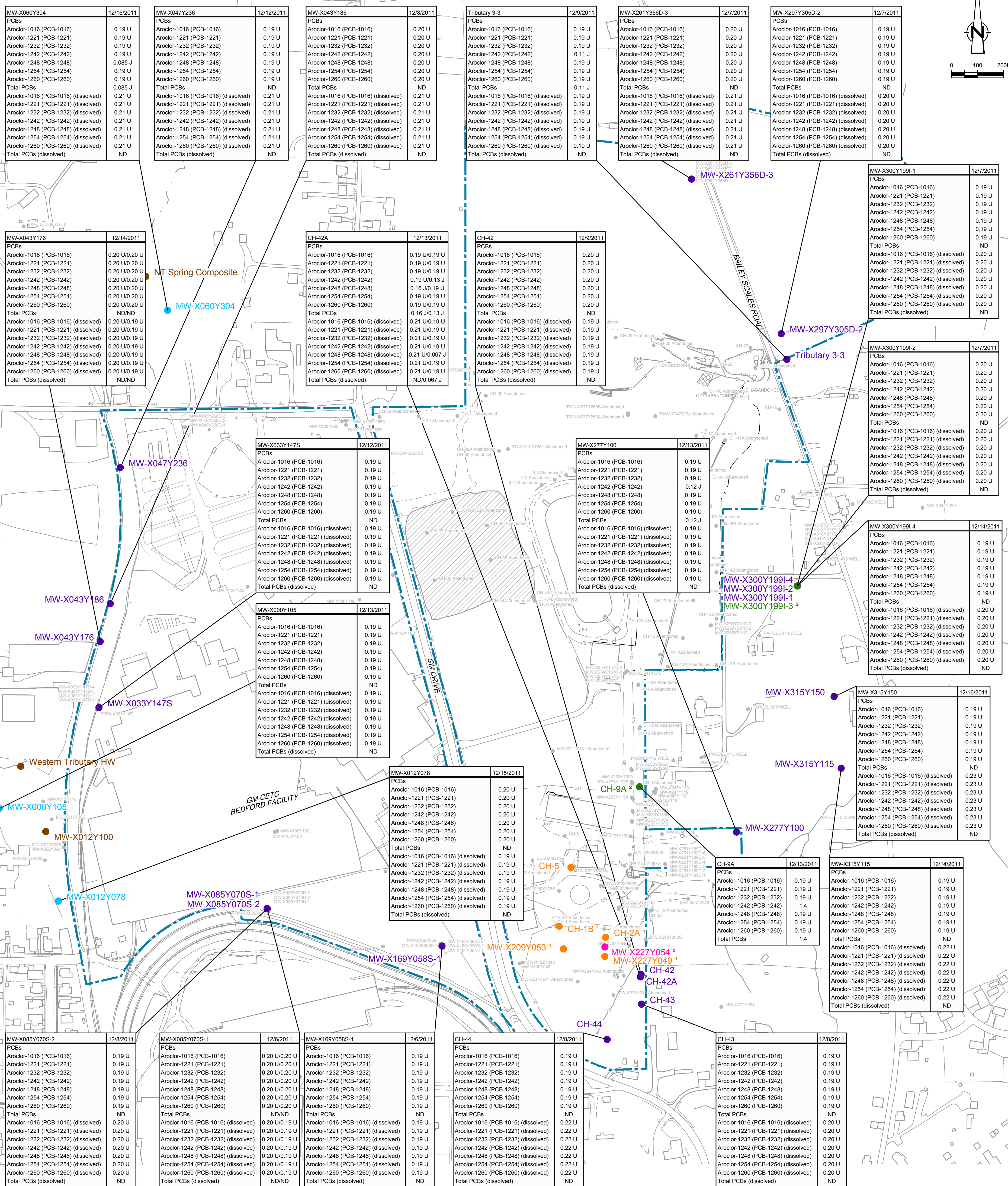
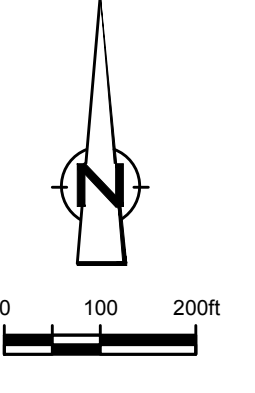
EI CA750 GROUNDWATER ANALYTICAL RESULTS
FOR PCBs FOR FIRST SEMI-ANNUAL
EVENT OF 2011

CONESTOGA-ROVERS & ASSOCIATES

Source Reference:
BASE MAP COMPLETED BY AIR-LAND SURVEYS, FLINT MI. APRIL 2001.

Project Manager:	Reviewed By:	Date:
J.M.	P.G.	OCTOBER 2006
Scale:	Project No.:	Report No.:
AS SHOWN	13968-00	351

Drawing No.: 3.2



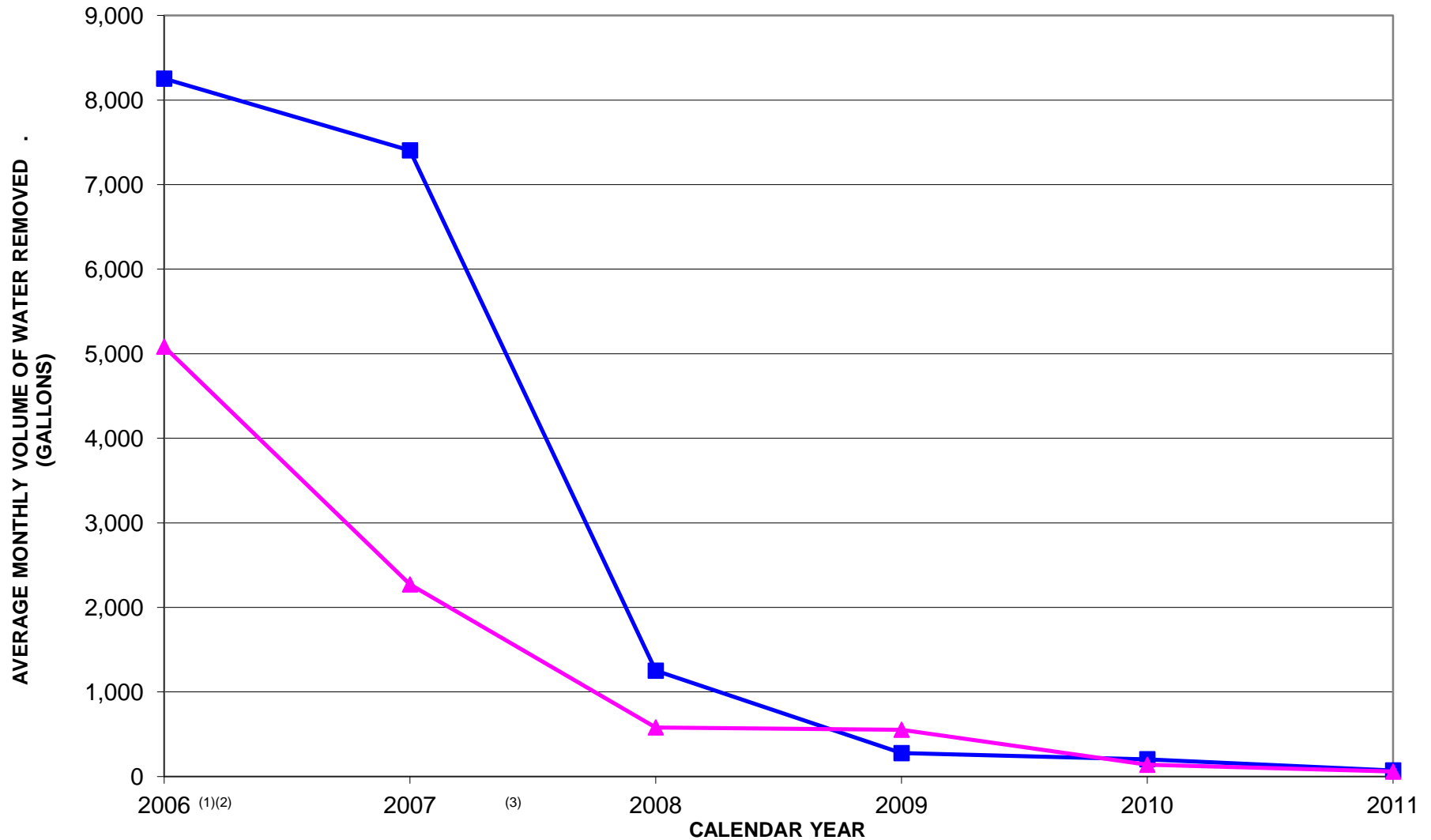
LEGEND

- EXISTING BUILDINGS
- FENCE LINE
- RAILROAD TRACKS
- DIRT ROADS
- ROADS / PAVED AREAS
- APPROXIMATE SURFACE WATER LOCATION
- APPROXIMATE GM PROPERTY BOUNDARY
- APPROXIMATE PARCEL BOUNDARY
- VAULT FOOTPRINT
- GROUNDWATER SAMPLE LOCATION
- MARCH-APRIL 2011 EI CA750 SAMPLING SUMMARY LOCATION
- RACER TRUST LOCATION NOT SAMPLED
- RACER TRUST LOCATION SAMPLED
- MONITORING WELL LOCATION WITH NAPL SAMPLED PREVIOUSLY
- MONITORING WELL LOCATION DRY
- MONITORING WELL DID NOT ACHIEVE PARAMETER STABILIZATION NAPL SAMPLED PREVIOUSLY

NOTE:

1) GM PROPERTY BOUNDARY SURVEY BY BLEDSOE RIGGERT GUERRETTAZ RECEIVED OCTOBER 2007. ADJACENT PROPERTY BOUNDARY LOCATIONS APPROXIMATED FROM THE LAWRENCE COUNTY SURVEY PLATS. ADJOINING PROPERTY LINES MAY NOT ACCURATELY REPRESENT THE TRUE PROPERTY BOUNDARIES

<p>Revision: _____ Date: _____ Initial: _____</p> <p>SCALE VERIFICATION</p> <p>THIS BAR MEASURES 1" ON ORIGINAL. ADJUST SCALE ACCORDINGLY.</p> <p>Approved: _____</p>				<p>GM CETC BEDFORD FACILITY BEDFORD, INDIANA</p> <p>2011 EAST PLANT AREA VAULT ANNUAL COMPLIANCE REPORT</p> <p>EI CA750 GROUNDWATER ANALYTICAL RESULTS FOR PCBs FOR SECOND SEMI-ANNUAL EVENT OF 2011</p>		<p>CONESTOGA-ROVERS & ASSOCIATES</p> <p>Source Reference: BASE MAP COMPLETED BY AIR-LAND SURVEYS, FLINT MI. APRIL 2001.</p> <p>Project Manager: J.M. Reviewed By: P.G. Date: OCTOBER 2006</p> <p>Scale: AS SHOWN Project No: 13968-00 Report No: 351 Drawing No: 3.3</p>	
---	--	--	--	---	--	---	--



LEGEND

- Leachate Collection System
- ▲ Leak Detection System

NOTES

- (1) Operation of the LCS and LDS commenced on Aug. 30, 2006.
- (2) Water from the underdrain system entered the LDS Sept 8, 9, 10, 12, 2006.
- (3) Rehabilitation activities were conducted on the LDS (flushing) on Jan. 23 - June 5, 2007.

figure 5.1

SUMMARY OF AVERAGE MONTHLY VOLUME OF WATER REMOVED FROM LCS AND LDS
 2011 EAST PLANT AREA VAULT ANNUAL COMPLIANCE REPORT
 GM CETC BEDFORD FACILITY
 Bedford, Indiana



TABLE 2.1

**2011 PUMPING DATA
LEACHATE COLLECTION SYSTEM (LCS)
EAST PLANT AREA VAULT
GM CETC BEDFORD FACILITY
BEDFORD, INDIANA**

Monitoring Location Information

	new depth from 9/24/10	new depth from 9/10/11
Top of sump (datum reference)	735.67	740.83
Bottom of sump (feet BTOS)	64.67	69.83
Diameter of sump (feet)	6	6

<i>Date</i>	<i>Water Level (feet BTOS)</i>	<i>Water Depth (feet AFOS)</i>	<i>Time of Measurement (hh:mm)</i>	<i>Water Depth Removed (feet)</i>	<i>Volume Removed (gallons)</i>	<i>Comments</i>
1/1/2011						Saturday (no w/l measurement)
1/2/2011						Sunday (no w/l measurement)
1/3/2011	60.1	4.57	9:34			
1/4/2011	60.1	4.57	8:48			
1/5/2011	60.1	4.57	10:26			
1/6/2011	60.1	4.57	9:38			
1/7/2011	60.1	4.57	11:16			
1/8/2011	60.0	4.67	8:45			
1/9/2011	60.0	4.67	9:26			
1/10/2011	60.0	4.67	11:25			
1/11/2011	60.0	4.67	10:35			
1/12/2011	60.0	4.67	11:44			
1/13/2011	60.0	4.67	10:57			
1/14/2011	60.0	4.67	9:37			
1/15/2011	60.0	4.67	13:34			
1/16/2011						Sunday (no w/l measurement)
1/17/2011	60.0	4.67	11:56			
1/18/2011	59.8	4.87	9:47			
1/19/2011	59.8	4.87	10:32			
1/20/2011	59.8	4.87	11:25			
1/21/2011	59.8	4.87	9:37			
1/22/2011						Saturday (no w/l measurement)
1/23/2011	59.8	4.87	10:24			
1/24/2011	59.8	4.87	9:48			
1/25/2011	59.7	4.97	11:55			
1/26/2011	59.7	4.97	9:24			CRA Tested
1/27/2011	59.7	4.97	9:05			
1/28/2011	59.7	4.97	10:47			
1/29/2011	59.7	4.97	11:19			
1/30/2011						Sunday (no w/l measurement)
1/31/2011	59.7	4.97	13:33			
2/1/2011	59.7	4.97	11:24			
2/2/2011	59.6	5.07	10:47			
2/3/2011	59.5	5.17	13:38			
2/4/2011	59.5	5.17	9:45			
2/5/2011	59.5	5.17	14:17			
2/6/2011						Sunday (no w/l measurement)
2/7/2011	59.5	5.17	10:39			
2/8/2011	59.5	5.17	11:49			
2/9/2011						
2/10/2011						
2/11/2011	59.5	5.17	13:30			
2/12/2011	59.5	5.17	11:09			
2/13/2011						Sunday (no w/l measurement)
2/14/2011	59.5	5.17	10:08			
2/15/2011	59.5	5.17	13:44			
2/16/2011	59.4	5.27	10:51			
2/17/2011	59.4	5.27	9:25			
2/18/2011	59.4	5.27	8:30			
2/19/2011	59.4	5.27	10:34			
2/20/2011						Sunday (no w/l measurement)
2/21/2011						Holiday
2/22/2011						
2/23/2011	59.4	5.27	14:47			CRA Sampled
2/24/2011	59.4	5.27	13:54			
2/25/2011	59.4	5.27	11:32			

TABLE 2.1

**2011 PUMPING DATA
LEACHATE COLLECTION SYSTEM (LCS)
EAST PLANT AREA VAULT
GM CETC BEDFORD FACILITY
BEDFORD, INDIANA**

Monitoring Location Information

	new depth from 9/24/10	new depth from 9/10/11
Top of sump (datum reference)	735.67	740.83
Bottom of sump (feet BTOS)	64.67	69.83
Diameter of sump (feet)	6	6

Date	Water Level (feet BTOS)	Water Depth (feet AFOS)	Time of Measurement (hh:mm)	Water Depth Removed (feet)	Volume Removed (gallons)	Comments
2/26/2011	59.4	5.27	9:43			
2/27/2011						Sunday (no w/l measurement)
2/28/2011	59.4	5.27	13:28			
3/1/2011	59.4	5.27	13:18			
3/2/2011	59.4	5.27	13:44			
3/3/2011	59.4	5.27	9:53			
3/4/2011	59.3	5.37	11:05			
3/5/2011	59.3	5.37	9:38			
3/6/2011	59.3	5.37	11:17			
3/7/2011	59.3	5.37	14:51			
3/8/2011	59.3	5.37	9:25			
3/9/2011	59.3	5.37	9:41			CRA Sampled
3/10/2011	59.3	5.37	10:33			
3/11/2011	59.3	5.37	14:17			
3/12/2011	59.3	5.37	14:40			
3/13/2011						Sunday (no w/l measurement)
3/14/2011	59.3	5.37	11:25			
3/15/2011	59.2	5.47	9:37			
3/16/2011	59.2	5.47	10:41			
3/17/2011	59.2	5.47	9:56			
3/18/2011	59.2	5.47	8:35			
3/19/2011						Saturday (no w/l measurement)
3/20/2011						Sunday (no w/l measurement)
3/21/2011						
3/22/2011	59.2	5.47	9:29			
3/23/2011	59.2	5.47	11:26			
3/24/2011	59.2	5.47	10:39			
3/25/2011	59.2	5.47	8:49			
3/26/2011	59.2	5.47	11:22			
3/27/2011						Sunday (no w/l measurement)
3/28/2011	59.2	5.47	10:54			
3/29/2011	59.2	5.47	13:32			
3/30/2011	59.2	5.47	9:23			
3/31/2011	59.2	5.47	14:47			
4/1/2011	59.2	5.47	13:26			
4/2/2011	59.2	5.47	9:34			
4/3/2011	59.2	5.47	11:19			
4/4/2011	59.1	5.57	13:53			
4/5/2011	59.1	5.57	14:48			
4/6/2011	59.1	5.57	15:25			
4/7/2011	59.1	5.57	14:28			
4/8/2011	59.1	5.57	14:39			
4/9/2011						Saturday (no w/l measurement)
4/10/2011						Sunday (no w/l measurement)
4/11/2011	59.1	5.57	14:42			
4/12/2011	59.2	5.47	16:31	0.10	21.15	Pumped for 20 minutes as an equipment check
4/13/2011	59.2	5.47	8:39			
4/14/2011	59.2	5.47	14:21			
4/15/2011	59.2	5.47	10:47			
4/16/2011						Saturday (no w/l measurement)
4/17/2011	59.2	5.47	9:35			
4/18/2011	59.1	5.57	10:08			
4/19/2011	59.1	5.57	13:22			
4/20/2011	59.1	5.57	11:29			
4/21/2011	59.0	5.67	10:26			
4/22/2011	59.0	5.67	13:34			

TABLE 2.1

**2011 PUMPING DATA
LEACHATE COLLECTION SYSTEM (LCS)
EAST PLANT AREA VAULT
GM CETC BEDFORD FACILITY
BEDFORD, INDIANA**

Monitoring Location Information

	new depth from 9/24/10	new depth from 9/10/11
Top of sump (datum reference)	735.67	740.83
Bottom of sump (feet BTOS)	64.67	69.83
Diameter of sump (feet)	6	6

Date	Water Level (feet BTOS)	Water Depth (feet AFOS)	Time of Measurement (hh:mm)	Water Depth Removed (feet)	Volume Removed (gallons)	Comments
4/23/2011	59.0	5.67	9:06			
4/24/2011	59.0	5.67	16:47			
4/25/2011	59.0	5.67	13:45			
4/26/2011	59.0	5.67	18:07			
4/27/2011	59.0	5.67	15:38			
4/28/2011	59.0	5.67	16:43			
4/29/2011	59.0	5.67	15:08			
4/30/2011	59.0	5.67	13:35			
5/1/2011	59.0	5.67	9:44			
5/2/2011	59.0	5.67	13:13			
5/3/2011	59.0	5.67	13:14			
5/4/2011	59.0	5.67	14:07			
5/5/2011	59.0	5.67	14:25			
5/6/2011	59.0	5.67	9:34			
5/7/2011						Saturday (no w/l measurement)
5/8/2011						Sunday (no w/l measurement)
5/9/2011	58.9	5.77	11:37			
5/10/2011	58.9	5.77	10:55			
5/11/2011	58.9	5.77	14:21			CRA Sampled
5/12/2011	58.9	5.77	13:25			
5/13/2011	58.9	5.77	14:02			
5/14/2011	58.9	5.77	15:59			
5/15/2011	58.9	5.77	13:15			
5/16/2011	58.8	5.87	14:47			
5/17/2011	58.8	5.87	13:31			
5/18/2011	58.8	5.87	10:52			
5/19/2011	58.8	5.87	14:19			
5/20/2011	58.8	5.87	13:13			
5/21/2011	58.8	5.87	13:49			
5/22/2011						Sunday (no w/l measurement)
5/23/2011	58.8	5.87	13:35			
5/24/2011	58.8	5.87	11:50			
5/25/2011	58.8	5.87	11:04			
5/26/2011	58.8	5.87	13:47			
5/27/2011	58.7	5.97	13:19			
5/28/2011						Saturday (no w/l measurement)
5/29/2011	58.7	5.97	12:04			
5/30/2011						Holiday
5/31/2011	58.7	5.97	13:13			
6/1/2011	58.7	5.97	10:39			
6/2/2011	58.7	5.97	13:36			
6/3/2011	58.7	5.97	14:19			
6/4/2011	58.7	5.97	14:05			
6/5/2011						Sunday (no w/l measurement)
6/6/2011	58.6	6.07	8:41			
6/7/2011	58.6	6.07	10:47			
6/8/2011	58.6	6.07	14:36			
6/9/2011	58.6	6.07	13:35			
6/10/2011	58.6	6.07	11:42			
6/11/2011	58.6	6.07	9:55			
6/12/2011						Sunday (no w/l measurement)
6/13/2011	58.6	6.07	8:04			
6/14/2011	58.6	6.07	8:47			
6/15/2011	58.6	6.07	10:50			
6/16/2011	58.6	6.07	9:34			
6/17/2011	58.6	6.07	8:42			

TABLE 2.1

**2011 PUMPING DATA
LEACHATE COLLECTION SYSTEM (LCS)
EAST PLANT AREA VAULT
GM CETC BEDFORD FACILITY
BEDFORD, INDIANA**

Monitoring Location Information

	new depth from 9/24/10	new depth from 9/10/11
Top of sump (datum reference)	735.67	740.83
Bottom of sump (feet BTOS)	64.67	69.83
Diameter of sump (feet)	6	6

Date	Water Level (feet BTOS)	Water Depth (feet AFOS)	Time of Measurement (hh:mm)	Water Depth Removed (feet)	Volume Removed (gallons)	Comments
6/18/2011	58.6	6.07	9:49			
6/19/2011						Sunday (no w/l measurement)
6/20/2011						
6/21/2011	58.6	6.07	8:28			
6/22/2011	58.6	6.07	8:54			
6/23/2011	58.6	6.07	10:44			
6/24/2011	58.6	6.07	13:15			
6/25/2011	58.6	6.07	9:25			
6/26/2011	58.5	6.17	10:32			
6/27/2011	58.5	6.17	11:10			
6/28/2011	58.5	6.17	9:43			
6/29/2011	58.5	6.17	8:26			
6/30/2011	58.4	6.27	9:24			
7/1/2011	58.4	6.27	8:55			
7/2/2011						Saturday (no w/l measurement)
7/3/2011						Sunday (no w/l measurement)
7/4/2011						Holiday
7/5/2011	58.3	6.37	8:22			
7/6/2011	58.3	6.37	10:35			
7/7/2011	58.3	6.37	9:31			
7/8/2011	58.3	6.37	13:34			
7/9/2011	58.3	6.37	10:57			
7/10/2011	58.3	6.37	9:32			
7/11/2011	58.3	6.37	10:16			
7/12/2011	58.3	6.37	13:45			
7/13/2011	58.3	6.37	11:35			
7/14/2011	58.3	6.37	9:48			
7/15/2011	58.3	6.37	13:21			
7/16/2011	58.4	6.27	10:35	0.10	21.15	Pumped for 50 minutes as an equipment check
7/17/2011						Sunday (no w/l measurement)
7/18/2011	58.4	6.27	9:53			
7/19/2011	58.4	6.27	7:35			
7/20/2011	58.4	6.27	8:35			
7/21/2011	58.4	6.27	8:53			
7/22/2011	58.3	6.37	9:24			
7/23/2011						Saturday (no w/l measurement)
7/24/2011	58.3	6.37	8:25			
7/25/2011	58.3	6.37	8:57			
7/26/2011	58.3	6.37	9:36			
7/27/2011	58.2	6.47	11:41			
7/28/2011	58.2	6.47	9:44			
7/29/2011	58.2	6.47	11:05			
7/30/2011	58.2	6.47	9:31			
7/31/2011						Sunday (no w/l measurement)
8/1/2011	58.2	6.47	14:55			
8/2/2011	58.2	6.47	9:46			
8/3/2011	58.2	6.47	8:58			
8/4/2011						
8/5/2011	58.2	6.47	13:40			
8/6/2011	58.2	6.47	9:41			
8/7/2011	58.2	6.47	10:22			
8/8/2011	58.2	6.47	9:20			
8/9/2011	58.2	6.47	14:45			
8/10/2011	58.2	6.47	16:12			
8/11/2011	58.2	6.47	15:43			
8/12/2011	58.1	6.57	7:10			CRA Sampled

TABLE 2.1

**2011 PUMPING DATA
LEACHATE COLLECTION SYSTEM (LCS)
EAST PLANT AREA VAULT
GM CETC BEDFORD FACILITY
BEDFORD, INDIANA**

Monitoring Location Information

	new depth from 9/24/10	new depth from 9/10/11
Top of sump (datum reference)	735.67	740.83
Bottom of sump (feet BTOS)	64.67	69.83
Diameter of sump (feet)	6	6

<i>Date</i>	<i>Water Level (feet BTOS)</i>	<i>Water Depth (feet AFOS)</i>	<i>Time of Measurement (hh:mm)</i>	<i>Water Depth Removed (feet)</i>	<i>Volume Removed (gallons)</i>	<i>Comments</i>
8/13/2011	58.1	6.57	11:39			
8/14/2011						Sunday (no w/l measurement)
8/15/2011	58.0	6.67	8:02			
8/16/2011	58.0	6.67	7:41			
8/17/2011	58.0	6.67	11:28			
8/18/2011	58.0	6.67	9:27			
8/19/2011	58.0	6.67	14:12			
8/20/2011	58.0	6.67	7:39			
8/21/2011	58.0	6.67	10:34			
8/22/2011	58.0	6.67	14:36			
8/23/2011	58.0	6.67	13:19			
8/24/2011	58.0	6.67	11:34			
8/25/2011	58.0	6.67	10:54			
8/26/2011	58.0	6.67	9:34			
8/27/2011	58.0	6.67	11:55			
8/28/2011						Sunday (no w/l measurement)
8/29/2011	58.0	6.67	13:31			
8/30/2011	58.0	6.67	9:28			
8/31/2011	58.0	6.67	9:04			
9/1/2011	58.0	6.67	8:29			
9/2/2011	58.0	6.67	9:53			
9/3/2011						Saturday (no w/l measurement)
9/4/2011	58.0	6.67	10:20			
9/5/2011						Holiday
9/6/2011	58.0	6.67	14:44			
9/7/2011	58.0	6.67	13:53			
9/8/2011	58.0	6.67	9:31			
9/9/2011	58.0	6.67	11:07			
9/10/2011	58.0	6.67	8:59			Raised up approximately 5' 1" with Lid, Saturday
9/11/2011						Sunday (no w/l measurement)
9/12/2011	63.1	6.73	13:17			
9/13/2011	63.1	6.73	9:38			
9/14/2011	63.1	6.73	14:04			
9/15/2011	63.1	6.73	8:34			
9/16/2011	63.1	6.73	9:39			
9/17/2011	63.1	6.73	10:29			
9/18/2011	63.1	6.73	9:17			
9/19/2011	63.1	6.73	13:39			
9/20/2011	63.1	6.73	11:44			
9/21/2011	63.0	6.83	13:21			
9/22/2011	63.0	6.83	9:27			
9/23/2011	63.0	6.83	10:53			
9/24/2011						Saturday (no w/l measurement)
9/25/2011						Sunday (no w/l measurement)
9/26/2011	62.7	7.13	13:50			
9/27/2011	62.7	7.13	10:05			
9/28/2011	62.7	7.13	8:28			
9/29/2011	62.7	7.13	10:45			
9/30/2011	62.7	7.13	12:53			
10/1/2011	62.7	7.13	7:45			
10/2/2011	62.7	7.13	11:33			
10/3/2011	62.7	7.13	10:52			
10/4/2011	62.7	7.13	8:24			
10/5/2011	62.7	7.13	13:59			
10/6/2011	62.7	7.13	15:28			
10/7/2011	62.6	7.23	14:51			
10/8/2011	62.6	7.23	9:32			

TABLE 2.1

2011 PUMPING DATA
LEACHATE COLLECTION SYSTEM (LCS)
EAST PLANT AREA VAULT
GM CETC BEDFORD FACILITY
BEDFORD, INDIANA

Monitoring Location Information

	new depth from 9/24/10	new depth from 9/10/11
Top of sump (datum reference)	735.67	740.83
Bottom of sump (feet BTOS)	64.67	69.83
Diameter of sump (feet)	6	6

Date	Water Level (feet BTOS)	Water Depth (feet AFOS)	Time of Measurement (hh:mm)	Water Depth Removed (feet)	Volume Removed (gallons)	Comments
10/9/2011						Sunday (no w/l measurement)
10/10/2011	62.6	7.23	10:19			
10/11/2011	62.5	7.33	8:47			
10/12/2011	62.5	7.33	11:21			
10/13/2011	62.4	7.43	9:24			
10/14/2011	62.4	7.43	8:28			
10/15/2011	62.4	7.43	13:51			
10/16/2011	62.4	7.43	10:34			
10/17/2011	62.4	7.43	9:23			
10/18/2011	62.4	7.43	7:51			
10/19/2011	62.3	7.53	8:29			
10/20/2011	62.3	7.53	9:42			
10/21/2011	62.3	7.53	11:04			
10/22/2011						Saturday (no w/l measurement)
10/23/2011						Sunday (no w/l measurement)
10/24/2011	62.2	7.63	8:33			
10/25/2011	62.2	7.63	9:36			
10/26/2011	62.2	7.63	13:24			
10/27/2011	62.2	7.63	10:21			
10/28/2011	62.2	7.63	11:28			
10/29/2011	62.2	7.63	9:44			
10/30/2011	62.2	7.63	14:06			
10/31/2011	62.2	7.63	13:21			
11/1/2011	62.2	7.63	10:57			
11/2/2011	62.2	7.63	8:30			
11/3/2011	62.2	7.63	9:38			
11/4/2011	62.2	7.63	13:26			
11/5/2011	62.2	7.63	11:13			
11/6/2011						Sunday (no w/l measurement)
11/7/2011	62.2	7.63	11:47			
11/8/2011						Could not take measurement - instrument stuck in well
11/9/2011						Could not take measurement - instrument stuck in well
11/10/2011						Could not take measurement - instrument stuck in well
11/11/2011						Holiday
11/12/2011						Saturday (no w/l measurement)
11/13/2011						Sunday (no w/l measurement)
11/14/2011						Could not take measurement - instrument stuck in well
11/15/2011						Could not take measurement - instrument stuck in well
11/16/2011						Could not take measurement - instrument stuck in well
11/17/2011						Could not take measurement - instrument stuck in well
11/18/2011						Could not take measurement - instrument stuck in well
11/19/2011						Saturday (no w/l measurement)
11/20/2011						Sunday (no w/l measurement)
11/21/2011						Could not take measurement - instrument stuck in well
11/22/2011						Could not take measurement - instrument stuck in well
11/23/2011						Could not take measurement - instrument stuck in well
11/24/2011						Holiday
11/25/2011						Could not take measurement - instrument stuck in well
11/26/2011						Saturday (no w/l measurement)
11/27/2011						Sunday (no w/l measurement)
11/28/2011						Could not take measurement - instrument stuck in well
11/29/2011						Could not take measurement - instrument stuck in well
11/30/2011	61.5	8.33	13:41			
12/1/2011	61.5	8.33	12:31			
12/2/2011	61.5	8.33	15:58			
12/3/2011	61.5	8.33	11:52			
12/4/2011						Sunday (no w/l measurement)
12/5/2011	61.4	8.43	14:30			
12/6/2011	61.4	8.43	9:38			
12/7/2011	61.4	8.43	7:55			

TABLE 2.1

**2011 PUMPING DATA
LEACHATE COLLECTION SYSTEM (LCS)
EAST PLANT AREA VAULT
GM CETC BEDFORD FACILITY
BEDFORD, INDIANA**

Monitoring Location Information

	new depth from 9/24/10	new depth from 9/10/11
Top of sump (datum reference)	735.67	740.83
Bottom of sump (feet BTOS)	64.67	69.83
Diameter of sump (feet)	6	6

<i>Date</i>	<i>Water Level (feet BTOS)</i>	<i>Water Depth (feet AFOS)</i>	<i>Time of Measurement (hh:mm)</i>	<i>Water Depth Removed (feet)</i>	<i>Volume Removed (gallons)</i>	<i>Comments</i>
12/8/2011	61.4	8.43	12:34			
12/9/2011	61.4	8.43	12:20			
12/10/2011	61.4	8.43	12:40			
12/11/2011	61.4	8.43	14:25			
12/12/2011	61.4	8.43	16:43			
12/13/2011	61.4	8.43	11:32			
12/14/2011	61.4	8.43	7:48			
12/15/2011	61.4	8.43	11:52			
12/16/2011	61.4	8.43	17:01			
12/17/2011	61.4	8.43	14:35			
12/18/2011						Sunday (no w/l measurement)
12/19/2011	61.4	8.43	17:07			
12/20/2011	61.4	8.43	11:23			
12/21/2011	61.3	8.53	13:18			
12/22/2011	61.3	8.53	9:25			
12/23/2011	61.3	8.53	9:57			
12/24/2011						Saturday (no w/l measurement)
12/25/2011	61.3	8.53	11:44			
12/26/2011						Holiday
12/27/2011						
12/28/2011						
12/29/2011	61.3	8.53	13:47	3.96	837.56	
12/30/2011						
12/31/2011						Saturday (no w/l measurement)

Notes:

w/l - Water Level

Permanent pumps were permanently installed in the LCS sump in November 2008; however, they are not yet connected to the forcemain due to ongoing construction within the East Plant Area. Therefore, the LCS pumps are manually operated, as required, to keep water levels within the target operating range (2 to 3 ft of water) required to keep the pump motors submerged (in order to prevent overheating) and to keep the number of pump cycles per hour within the acceptable range (in order to prevent overuse of the pump).

TABLE 2.2
2011 PUMPING DATA
LEAK DETECTION SYSTEM
EAST PLANT AREA VAULT
GM CETC BEDFORD FACILITY
BEDFORD, INDIANA

Monitoring Location Information

	depth until	9/21/10 to	9/23/10 to	9/2/11 to	new depth from
	9/20/10	9/22/10	9/1/11	9/10/11	9/11/11
Top of sump (datum reference)	51.80	57.80	63.80	67.82	741.14
Bottom of sump (feet BTOS)	51.80	57.80	63.80	67.82	73.00
Diameter of sump (feet)	6	6	6	6	6

Date	Water Level feet (BTOS)	Water Depth feet (BTOS)	Time of Measurement (hh:mm)	Water Depth Removed (feet)	Volume Removed (gallons)	Comments
1/1/2011						Saturday (no w/l measurement)
1/2/2011						Sunday (no w/l measurement)
1/3/2011	63.2	0.60	9:22			
1/4/2011	63.2	0.60	8:40			
1/5/2011	63.2	0.60	10:20			
1/6/2011	63.2	0.60	9:31			
1/7/2011	63.2	0.60	11:05			
1/8/2011	63.2	0.60	8:31			
1/9/2011	63.2	0.60	9:19			
1/10/2011	63.2	0.60	11:08			
1/11/2011	63.2	0.60	10:24			
1/12/2011	63.2	0.60	11:25			
1/13/2011	63.2	0.60	10:43			
1/14/2011	63.2	0.60	9:24			
1/15/2011	63.2	0.60	13:27			
1/16/2011						Sunday (no w/l measurement)
1/17/2011	63.2	0.60	11:41			
1/18/2011	63.1	0.70	9:36			
1/19/2011	63.1	0.70	10:27			
1/20/2011	63.1	0.70	11:17			
1/21/2011	63.1	0.70	9:25			
1/22/2011						Saturday (no w/l measurement)
1/23/2011	63.1	0.70	10:15			
1/24/2011	63.1	0.70	9:39			
1/25/2011	63.0	0.80	11:47			
1/26/2011	63.0	0.80	9:17			CRA Sampled
1/27/2011	63.0	0.80	8:52			
1/28/2011	63.0	0.80	10:36			
1/29/2011	63.0	0.80	11:11			
1/30/2011						Sunday (no w/l measurement)
1/31/2011	63.0	0.80	13:27			
2/1/2011	63.0	0.80	11:17			
2/2/2011	63.0	0.80	10:35			
2/3/2011	63.0	0.80	13:27			
2/4/2011	62.9	0.90	6:27			
2/5/2011	62.9	0.90	14:10			
2/6/2011						Sunday (no w/l measurement)
2/7/2011	62.9	0.90	10:31			
2/8/2011	62.9	0.90	11:42			
2/9/2011						
2/10/2011						
2/11/2011	62.9	0.90	13:24			
2/12/2011	62.9	0.90	10:56			
2/13/2011						Sunday (no w/l measurement)
2/14/2011	62.9	0.90	9:55			
2/15/2011	62.9	0.90	13:30			
2/16/2011	62.8	1.00	10:44			
2/17/2011	62.8	1.00	9:19			
2/18/2011	62.8	1.00	8:32			
2/19/2011	62.8	1.00	10:26			
2/20/2011						Sunday (no w/l measurement)
2/21/2011						Holiday (no w/l measurements)
2/22/2011						
2/23/2011	62.7	1.10	14:40			CRA Sampled
2/24/2011	62.7	1.10	13:45			

TABLE 2.2
2011 PUMPING DATA
LEAK DETECTION SYSTEM
EAST PLANT AREA VAULT
GM CETC BEDFORD FACILITY
BEDFORD, INDIANA

Monitoring Location Information

	depth until 9/20/10	9/21/10 to 9/22/10	9/23/10 to 9/1/11	9/2/11 to 9/10/11	new depth from 9/11/11
Top of sump (datum reference)	51.80	57.80	63.80	67.82	741.14
Bottom of sump (feet BTOS)	51.80	57.80	63.80	67.82	73.00
Diameter of sump (feet)	6	6	6	6	6

Date	Water Level feet (BTOS)	Water Depth feet (BTOS)	Time of Measurement (hh:mm)	Water Depth Removed (feet)	Volume Removed (gallons)	Comments
2/25/2011	62.7	1.10	11:25			
2/26/2011	62.7	1.10	9:37			
2/27/2011						Sunday (no w/l measurement)
2/28/2011	62.6	1.20	13:22			
3/1/2011	62.6	1.20	13:12			
3/2/2011	62.6	1.20	13:34			
3/3/2011	62.6	1.20	9:45			
3/4/2011	62.6	1.20	10:51			
3/5/2011	62.5	1.30	9:31			
3/6/2011	62.5	1.30	11:12			
3/7/2011	62.5	1.30	14:43			
3/8/2011	62.5	1.30	9:17			
3/9/2011	62.5	1.30	9:34			CRA Sampled
3/10/2011	62.5	1.30	10:24			
3/11/2011	62.5	1.30	14:09			
3/12/2011	62.5	1.30	14:31			
3/13/2011						Sunday (no w/l measurement)
3/14/2011	62.5	1.30	11:12			
3/15/2011	62.5	1.30	9:26			
3/16/2011	62.5	1.30	10:34			
3/17/2011	62.5	1.30	9:42			
3/18/2011	62.5	1.30	8:24			
3/19/2011						Saturday (no w/l measurement)
3/20/2011						Sunday (no w/l measurement)
3/21/2011						
3/22/2011	62.4	1.40	9:21			
3/23/2011	62.4	1.40	11:15			
3/24/2011	62.4	1.40	10:27			
3/25/2011	62.4	1.40	8:35			
3/26/2011	62.4	1.40	11:16			
3/27/2011						Sunday (no w/l measurement)
3/28/2011	62.4	1.40	10:44			
3/29/2011	62.4	1.40	13:27			
3/30/2011	62.4	1.40	9:14			
3/31/2011	62.4	1.40	14:32			
4/1/2011	62.4	1.40	13:14			
4/2/2011	62.4	1.40	9:27			
4/3/2011	62.4	1.40	11:08			
4/4/2011	62.4	1.40	13:44			
4/5/2011	62.4	1.40	14:41			
4/6/2011	62.4	1.40	15:19			
4/7/2011	62.4	1.40	14:20			
4/8/2011	62.4	1.40	14:33			
4/9/2011						Saturday (no w/l measurement)
4/10/2011						Sunday (no w/l measurement)
4/11/2011	62.3	1.50	15:35			
4/12/2011	63.0	0.80	15:19	0.70	148.05	Pumped for 1.5 hours
4/13/2011	63.0	0.80	8:27			
4/14/2011	63.0	0.80	14:12			
4/15/2011	63.0	0.80	10:34			
4/16/2011						Saturday (no w/l measurement)
4/17/2011	63.0	0.80	9:28			
4/18/2011	62.9	0.90	9:59			
4/19/2011	62.9	0.90	13:14			
4/20/2011	62.9	0.90	11:20			CRA Sampled

TABLE 2.2
2011 PUMPING DATA
LEAK DETECTION SYSTEM
EAST PLANT AREA VAULT
GM CETC BEDFORD FACILITY
BEDFORD, INDIANA

Monitoring Location Information

	depth until 9/20/10	9/21/10 to 9/22/10	9/23/10 to 9/1/11	9/2/11 to 9/10/11	new depth from 9/11/11
Top of sump (datum reference)	51.80	57.80	63.80	67.82	741.14
Bottom of sump (feet BTOS)	51.80	57.80	63.80	67.82	73.00
Diameter of sump (feet)	6	6	6	6	6

Date	Water Level feet (BTOS)	Water Depth feet (BTOS)	Time of Measurement (hh:mm)	Water Depth Removed (feet)	Volume Removed (gallons)	Comments
4/21/2011	62.9	0.90	10:17			
4/22/2011	62.9	0.90	13:26			
4/23/2011	62.9	0.90	8:50			
4/24/2011	62.9	0.90	16:31			
4/25/2011	62.9	0.90	13:35			
4/26/2011	62.8	1.00	17:53			
4/27/2011	62.8	1.00	15:26			
4/28/2011	62.8	1.00	16:35			
4/29/2011	62.8	1.00	14:51			
4/30/2011	62.8	1.00	13:26			
5/1/2011	62.8	1.00	9:37			
5/2/2011	62.8	1.00	13:03			
5/3/2011	62.8	1.00	13:38			
5/4/2011	62.8	1.00	13:52			
5/5/2011	62.8	1.00	14:12			
5/6/2011	62.8	1.00	9:27			
5/7/2011						Saturday (no w/l measurement)
5/8/2011						Sunday (no w/l measurement)
5/9/2011	62.7	1.10	11:29			
5/10/2011	62.7	1.10	10:47			
5/11/2011	62.7	1.10	14:09			CRA Sampled
5/12/2011	62.7	1.10	13:16			
5/13/2011	62.7	1.10	13:54			
5/14/2011	62.7	1.10	15:48			
5/15/2011	62.7	1.10	13:04			
5/16/2011	63.2	0.60	14:35	0.50	105.75	Pumped
5/17/2011	63.2	0.60	13:20			
5/18/2011	63.2	0.60	10:47			
5/19/2011	63.2	0.60	14:11			
5/20/2011	63.2	0.60	13:06			
5/21/2011	63.2	0.60	13:42			
5/22/2011						Sunday (no w/l measurement)
5/23/2011	63.2	0.60	13:27			
5/24/2011	63.2	0.60	11:42			
5/25/2011	63.2	0.60	10:51			
5/26/2011	63.2	0.60	13:33			
5/27/2011	63.2	0.60	13:07			
5/28/2011						Saturday (no w/l measurement)
5/29/2011	63.2	0.60	11:56			
5/30/2011						Holiday (no w/l measurements)
5/31/2011	63.2	0.60	13:06			
6/1/2011	63.2	0.60	10:27			
6/2/2011	63.2	0.60	13:29			
6/3/2011	63.2	0.60	14:10			
6/4/2011	63.2	0.60	13:58			
6/5/2011						Sunday (no w/l measurement)
6/6/2011	63.1	0.70	8:33			
6/7/2011	63.1	0.70	10:39			
6/8/2011	63.1	0.70	14:24			CRA Sampled
6/9/2011	63.1	0.70	13:28			
6/10/2011	63.1	0.70	11:35			
6/11/2011	63.1	0.70	9:49			
6/12/2011						Sunday (no w/l measurement)
6/13/2011	63.1	0.70	7:51			
6/14/2011	63.0	0.80	8:35			

TABLE 2.2
2011 PUMPING DATA
LEAK DETECTION SYSTEM
EAST PLANT AREA VAULT
GM CETC BEDFORD FACILITY
BEDFORD, INDIANA

Monitoring Location Information

	depth until 9/20/10	9/21/10 to 9/22/10	9/23/10 to 9/1/11	9/2/11 to 9/10/11	new depth from 9/11/11
Top of sump (datum reference)	51.80	57.80	63.80	67.82	741.14
Bottom of sump (feet BTOS)	51.80	57.80	63.80	67.82	73.00
Diameter of sump (feet)	6	6	6	6	6

Date	Water Level feet (BTOS)	Water Depth feet (BTOS)	Time of Measurement (hh:mm)	Water Depth Removed (feet)	Volume Removed (gallons)	Comments
6/15/2011	63.0	0.80	10:41			
6/16/2011	63.0	0.80	9:27			
6/17/2011	63.0	0.80	8:36			
6/18/2011	63.0	0.80	9:42			
6/19/2011						Sunday (no w/l measurement)
6/20/2011						
6/21/2011	63.0	0.80	8:17			
6/22/2011	63.0	0.80	8:42			
6/23/2011	63.0	0.80	10:36			
6/24/2011	63.0	0.80	13:05			
6/25/2011	63.0	0.80	9:16			
6/26/2011	63.0	0.80	10:24			
6/27/2011	62.9	0.90	10:59			
6/28/2011	62.9	0.90	9:34			
6/29/2011	62.9	0.90	8:17			
6/30/2011	62.9	0.90	9:14			
7/1/2011	62.9	0.90	8:42			
7/2/2011						Saturday (no w/l measurement)
7/3/2011						Sunday (no w/l measurement)
7/4/2011						Holiday (no w/l measurements)
7/5/2011	62.9	0.90	8:16			
7/6/2011	62.9	0.90	10:27			
7/7/2011	62.9	0.90	9:22			
7/8/2011	62.9	0.90	13:26			
7/9/2011	62.8	1.00	10:42			
7/10/2011	62.8	1.00	9:24			
7/11/2011	62.8	1.00	10:09			
7/12/2011	62.8	1.00	13:34			
7/13/2011	62.8	1.00	11:17			
7/14/2011	62.8	1.00	9:34			
7/15/2011	62.8	1.00	13:14			
7/16/2011	62.9	0.90	10:27	0.10	21.15	Pumped 30 min for pump check
7/17/2011						Sunday (no w/l measurement)
7/18/2011	62.9	0.90	9:24			
7/19/2011	62.9	0.90	7:24			
7/20/2011	62.9	0.90	8:46			
7/21/2011	62.9	0.90	9:17			
7/22/2011	62.8	1.00	8:55			
7/23/2011						Saturday (no w/l measurement)
7/24/2011	62.8	1.00	8:17			
7/25/2011	62.8	1.00	8:46			
7/26/2011	62.8	1.00	9:28			
7/27/2011	62.8	1.00	11:26			CRA Sampled
7/28/2011	62.8	1.00	9:37			
7/29/2011	62.8	1.00	10:50			
7/30/2011	62.8	1.00	9:22			
7/31/2011						Sunday (no w/l measurement)
8/1/2011	62.7	1.10	14:43			
8/2/2011	62.7	1.10	9:21			
8/3/2011	62.7	1.10	8:49			
8/4/2011						
8/5/2011	62.7	1.10	13:27			
8/6/2011	62.7	1.10	9:34			
8/7/2011	62.7	1.10	10:17			
8/8/2011	62.7	1.10	9:14			

TABLE 2.2
2011 PUMPING DATA
LEAK DETECTION SYSTEM
EAST PLANT AREA VAULT
GM CETC BEDFORD FACILITY
BEDFORD, INDIANA

Monitoring Location Information

	depth until 9/20/10	9/21/10 to 9/22/10	9/23/10 to 9/1/11	9/2/11 to 9/10/11	new depth from 9/11/11
Top of sump (datum reference)	51.80	57.80	63.80	67.82	741.14
Bottom of sump (feet BTOS)	51.80	57.80	63.80	67.82	73.00
Diameter of sump (feet)	6	6	6	6	6

<i>Date</i>	<i>Water Level feet (BTOS)</i>	<i>Water Depth feet (BTOS)</i>	<i>Time of Measurement (hh:mm)</i>	<i>Water Depth Removed (feet)</i>	<i>Volume Removed (gallons)</i>	<i>Comments</i>
8/9/2011	62.7	1.10	14:39			
8/10/2011	62.7	1.10	16:07			
8/11/2011	62.6	1.20	15:38			CRA Sampled
8/12/2011	62.6	1.20	7:17			
8/13/2011	62.6	1.20	11:34			
8/14/2011						Sunday (no w/l measurement)
8/15/2011	62.6	1.20	8:10			
8/16/2011	62.6	1.20	7:48			
8/17/2011	62.6	1.20	11:19			
8/18/2011	62.6	1.20	9:15			
8/19/2011	62.6	1.20	14:06			
8/20/2011	62.6	1.20	7:34			
8/21/2011	62.6	1.20	10:26			
8/22/2011	62.6	1.20	14:31			
8/23/2011	62.6	1.20	13:12			
8/24/2011	62.6	1.20	11:26			
8/25/2011	62.6	1.20	10:47			
8/26/2011	62.6	1.20	9:26			
8/27/2011	62.6	1.20	11:46			
8/28/2011						Sunday (no w/l measurement)
8/29/2011	62.6	1.20	14:27			
8/30/2011	62.6	1.20	9:20			
8/31/2011	62.6	1.20	8:55			
9/1/2011	62.6	1.20	8:24			
9/2/2011	62.6	1.20	9:45			Raised 4' 1/4"
9/3/2011						Saturday (no w/l measurement)
9/4/2011	66.6	1.22	10:12			
9/5/2011						Holiday (no w/l measurements)
9/6/2011	66.5	1.32	14:35			
9/7/2011	66.5	1.32	13:46			
9/8/2011	66.5	1.32	9:24			
9/9/2011	66.5	1.32	10:58			
9/10/2011	66.5	1.32	8:47			raised approximately 5' 2" with Lid
9/11/2011						Sunday (no w/l measurement)
9/12/2011	71.7	1.30	13:10			
9/13/2011	71.7	1.30	9:32			
9/14/2011	71.7	1.30	13:51			
9/15/2011	71.7	1.30	8:27			
9/16/2011	71.7	1.30	9:29			
9/17/2011	71.7	1.30	10:12			
9/18/2011	71.7	1.30	9:08			
9/19/2011	71.7	1.30	13:28			
9/20/2011	71.6	1.40	11:37			
9/21/2011	71.6	1.40	13:12			
9/22/2011	71.6	1.40	9:16			
9/23/2011	71.5	1.50	10:45			
9/24/2011						Saturday (no w/l measurement)
9/25/2011						Sunday (no w/l measurement)
9/26/2011	71.3	1.70	13:46			
9/27/2011	71.3	1.70	9:53			CRA Sampled
9/28/2011	71.3	1.70	8:15			
9/29/2011	71.3	1.70	10:35			
9/30/2011	71.3	1.70	12:46			
10/1/2011	71.3	1.70	9:37			
10/2/2011	71.3	1.70	11:25			

TABLE 2.2
2011 PUMPING DATA
LEAK DETECTION SYSTEM
EAST PLANT AREA VAULT
GM CETC BEDFORD FACILITY
BEDFORD, INDIANA

Monitoring Location Information

	depth until 9/20/10	9/21/10 to 9/22/10	9/23/10 to 9/1/11	9/2/11 to 9/10/11	new depth from 9/11/11
Top of sump (datum reference)	51.80	57.80	63.80	67.82	741.14
Bottom of sump (feet BTOS)	51.80	57.80	63.80	67.82	73.00
Diameter of sump (feet)	6	6	6	6	6

Date	Water Level feet (BTOS)	Water Depth feet (BTOS)	Time of Measurement (hh:mm)	Water Depth Removed (feet)	Volume Removed (gallons)	Comments
10/3/2011	71.3	1.70	10:45			
10/4/2011	71.3	1.70	8:17			
10/5/2011	71.3	1.70	13:48			
10/6/2011	71.3	1.70	15:22			
10/7/2011	71.3	1.70	14:45			
10/8/2011	71.2	1.80	9:24			
10/9/2011						Sunday (no w/l measurement)
10/10/2011	71.2	1.80	10:12			
10/11/2011	71.2	1.80	8:34			
10/12/2011	71.2	1.80	11:12			
10/13/2011	71.1	1.90	9:17			
10/14/2011	71.1	1.90	8:20			
10/15/2011	71.1	1.90	13:44			
10/16/2011	71.1	1.90	10:26			
10/17/2011	71.1	1.90	9:08			
10/18/2011	71.1	1.90	7:44			
10/19/2011	71.0	2.00	8:23			
10/20/2011	71.0	2.00	9:36			
10/21/2011	71.0	2.00	10:52			
10/22/2011						Saturday (no w/l measurement)
10/23/2011						Sunday (no w/l measurement)
10/24/2011	71.0	2.00	8:29			
10/25/2011	71.0	2.00	9:23			
10/26/2011	71.0	2.00	13:17			CRA Sampled
10/27/2011	71.0	2.00	10:15			
10/28/2011	71.0	2.00	11:24			
10/29/2011	71.0	2.00	9:36			
10/30/2011	71.0	2.00	13:58			
10/31/2011	71.0	2.00	13:15			
11/1/2011	71.0	2.00	10:48			
11/2/2011	71.0	2.00	8:22			
11/3/2011	71.0	2.00	9:30			
11/4/2011	71.0	2.00	13:18			
11/5/2011	71.0	2.00	11:07			
11/6/2011						Sunday (no w/l measurement)
11/7/2011	71.0	2.00	11:39			
11/8/2011						Could not take measurement - instrument stuck in well
11/9/2011						Could not take measurement - instrument stuck in well
11/10/2011						Could not take measurement - instrument stuck in well
11/11/2011						Holiday (no w/l measurements)
11/12/2011						Saturday (no w/l measurement)
11/13/2011						Sunday (no w/l measurement)
11/14/2011						Could not take measurement - instrument stuck in well
11/15/2011						Could not take measurement - instrument stuck in well
11/16/2011						Could not take measurement - instrument stuck in well
11/17/2011						Could not take measurement - instrument stuck in well
11/18/2011						Could not take measurement - instrument stuck in well
11/19/2011						Saturday (no w/l measurement)
11/20/2011						Sunday (no w/l measurement)
11/21/2011						Could not take measurement - instrument stuck in well
11/22/2011						CRA Sampled. Could not take measurement - instrument stuck in well
11/23/2011						Could not take measurement - instrument stuck in well
11/24/2011						Holiday (no w/l measurements)
11/25/2011						Could not take measurement - instrument stuck in well
11/26/2011						Saturday (no w/l measurement)
11/27/2011						Sunday (no w/l measurement)
11/28/2011						Could not take measurement - instrument stuck in well
11/29/2011						Could not take measurement - instrument stuck in well

TABLE 2.2
2011 PUMPING DATA
LEAK DETECTION SYSTEM
EAST PLANT AREA VAULT
GM CETC BEDFORD FACILITY
BEDFORD, INDIANA

Monitoring Location Information

	depth until 9/20/10	9/21/10 to 9/22/10	9/23/10 to 9/1/11	9/2/11 to 9/10/11	new depth from 9/11/11
Top of sump (datum reference)	51.80	57.80	63.80	67.82	741.14
Bottom of sump (feet BTOS)	51.80	57.80	63.80	67.82	73.00
Diameter of sump (feet)	6	6	6	6	6

<i>Date</i>	<i>Water Level feet (BTOS)</i>	<i>Water Depth feet (BTOS)</i>	<i>Time of Measurement (hh:mm)</i>	<i>Water Depth Removed (feet)</i>	<i>Volume Removed (gallons)</i>	<i>Comments</i>
11/30/2011	70.3	2.70	13:37			
12/1/2011	70.3	2.70	12:24			
12/2/2011	70.3	2.70	15:52			
12/3/2011	70.3	2.70	11:45			
12/4/2011						Sunday (no w/l measurement)
12/5/2011	70.2	2.80	14:24			
12/6/2011	70.2	2.80	9:31			
12/7/2011	70.2	2.80	7:47			
12/8/2011	70.2	2.80	12:28			
12/9/2011	70.2	2.80	12:16			
12/10/2011	70.2	2.80	12:36			
12/11/2011	70.2	2.80	14:16			
12/12/2011	70.2	2.80	16:38			
12/13/2011	70.2	2.80	11:21			
12/14/2011	70.2	2.80	7:42			
12/15/2011	70.2	2.80	11:44			CRA Sampled
12/16/2011	70.2	2.80	16:51			
12/17/2011	70.2	2.80	14:21			
12/18/2011						Sunday (no w/l measurement)
12/19/2011	70.2	2.80	16:56			
12/20/2011	70.2	2.80	11:56			
12/21/2011	70.1	2.90	13:12			
12/22/2011	70.1	2.90	9:17			
12/23/2011	70.1	2.90	9:48			
12/24/2011						Saturday (no w/l measurement)
12/25/2011	70.1	2.90	11:34			
12/26/2011						Holiday (no w/l measurements)
12/27/2011						
12/28/2011						
12/29/2011	70.1	2.90	13:38	2.00	423.01	
12/30/2011						
12/31/2011						Saturday (no w/l measurement)

Notes:

w/l - Water Level

The water level was kept between 0.5 feet and 2.0 feet, except from November through December when the measurement device became lodged in the sump and level measurements could not be taken. During this time period, ongoing construction work in the area prevented pumping from being conducted.

TABLE 2.3

**2011 PUMPING DATA
GRAVEL UNDERDRAIN SUMP
EAST PLANT AREA VAULT
GM CETC BEDFORD FACILITY
BEDFORD, INDIANA**

Monitoring Location Information

	depth until 08/08/11	08/09/11 to 08/16/11	08/17/11 to 09/11/11	new depth from 09/12/11
Top of sump (datum reference)	708.81	719.61	730.41	738.21
Bottom of sump (feet BTOS)	46.67	57.47	68.27	76.07
Diameter of sump (feet)	1.5	1.5	1.5	1.5

Date	Water Level (feet BTOS)	Water Depth (feet AFOS)	Time of Water Level Measurement (hh:mm)	Comments
1/1/2011				Saturday (no w/l measurements)
1/2/2011				Sunday (no w/l measurements)
1/3/2011	40.1	6.57	9:15	
1/4/2011	40.1	6.57	8:32	
1/5/2011	40.1	6.57	10:14	
1/6/2011	40.1	6.57	9:20	
1/7/2011	40.1	6.57	10:50	
1/8/2011	40.1	6.57	8:25	
1/9/2011	40.1	6.57	9:12	
1/10/2011	40.1	6.57	11:05	
1/11/2011	40.1	6.57	10:10	
1/12/2011	40.1	6.57	11:22	
1/13/2011	40.1	6.57	10:35	
1/14/2011	40.1	6.57	9:10	
1/15/2011	40.1	6.57	13:16	
1/16/2011				Sunday (no w/l measurements)
1/17/2011	40.1	6.57	8:09	
1/18/2011	40.1	6.57	9:25	
1/19/2011	40.1	6.57	10:15	
1/20/2011	40.1	6.57	11:04	
1/21/2011	40.1	6.57	9:15	
1/22/2011				Saturday (no w/l measurements)
1/23/2011	40.1	6.57	10:04	
1/24/2011	40.1	6.57	9:27	
1/25/2011	40.1	6.57	11:32	
1/26/2011	40.1	6.57	9:10	CRA Sampled
1/27/2011	40.1	6.57	8:40	
1/28/2011	40.1	6.57	10:22	
1/29/2011	40.1	6.57	11:05	
1/30/2011				Sunday (no w/l measurements)
1/31/2011	40.1	6.57	13:19	
2/1/2011	40.1	6.57	11:10	
2/2/2011	40.1	6.57	10:23	
2/3/2011	40.1	6.57	13:14	
2/4/2011	40.1	6.57	9:28	
2/5/2011	40.1	6.57	14:03	
2/6/2011				Sunday (no w/l measurements)
2/7/2011	40.1	6.57	10:20	
2/8/2011	40.1	6.57	11:33	
2/9/2011				
2/10/2011				
2/11/2011	40.1	6.57	13:17	
2/12/2011	40.1	6.57	10:49	
2/13/2011				Sunday (no w/l measurements)
2/14/2011	40.1	6.57	9:42	
2/15/2011	40.1	6.57	13:42	
2/16/2011	40.1	6.57	10:36	
2/17/2011	40.1	6.57	9:12	
2/18/2011	40.1	6.57	8:17	
2/19/2011	40.1	6.57	10:14	
2/20/2011				Sunday (no w/l measurements)
2/21/2011				Holiday (no w/l measurements)
2/22/2011				
2/23/2011	40.1	6.57	14:34	CRA Sampled
2/24/2011	40.1	6.57	13:37	
2/25/2011	40.1	6.57	11:14	
2/26/2011	40.1	6.57	16:29	
2/27/2011				Sunday (no w/l measurements)
2/28/2011	40.1	6.57	13:15	

TABLE 2.3
2011 PUMPING DATA
GRAVEL UNDERDRAIN SUMP
EAST PLANT AREA VAULT
GM CETC BEDFORD FACILITY
BEDFORD, INDIANA

Monitoring Location Information

	depth until 08/08/11	08/09/11 to 08/16/11	08/17/11 to 09/11/11	new depth from 09/12/11
Top of sump (datum reference)	708.81	719.61	730.41	738.21
Bottom of sump (feet BTOS)	46.67	57.47	68.27	76.07
Diameter of sump (feet)	1.5	1.5	1.5	1.5

Date	Water Level (feet BTOS)	Water Depth (feet AFOS)	Time of Water Level	Comments
			Measurement (hh:mm)	
3/1/2011	40.1	6.57	13:04	
3/2/2011	40.1	6.57	13:26	
3/3/2011	40.1	6.57	9:31	
3/4/2011	40.1	6.57	10:44	
3/5/2011	40.1	6.57	9:20	
3/6/2011	40.1	6.57	11:00	
3/7/2011	40.1	6.57	14:38	
3/8/2011	40.1	6.57	9:10	
3/9/2011	40.1	6.57	9:27	CRA Sampled
3/10/2011	40.1	6.57	10:15	
3/11/2011	40.1	6.57	14:04	
3/12/2011	40.1	6.57	14:26	
3/13/2011				Sunday (no w/l measurements)
3/14/2011	40.1	6.57	11:02	
3/15/2011	40.0	6.67	9:15	
3/16/2011	40.1	6.57	10:20	
3/17/2011	40.1	6.57	9:34	
3/18/2011	40.1	6.57	8:10	
3/19/2011				Saturday (no w/l measurements)
3/20/2011				Sunday (no w/l measurements)
3/21/2011				
3/22/2011	40.1	6.57	9:10	
3/23/2011	40.1	6.57	11:05	
3/24/2011	40.1	6.57	10:15	
3/25/2011	40.1	6.57	8:24	
3/26/2011	40.1	6.57	11:00	
3/27/2011				Sunday (no w/l measurements)
3/28/2011	40.1	6.57	10:37	
3/29/2011	40.1	6.57	13:16	
3/30/2011	40.1	6.57	9:10	
3/31/2011	40.1	6.57	14:26	
4/1/2011	40.1	6.57	13:09	
4/2/2011	40.1	6.57	9:15	
4/3/2011	40.1	6.57	11:05	
4/4/2011	40.1	6.57	13:36	
4/5/2011	40.1	6.57	14:53	
4/6/2011	40.1	6.57	15:14	
4/7/2011	40.1	6.57	14:10	
4/8/2011	40.1	6.57	14:20	
4/9/2011				Saturday (no w/l measurements)
4/10/2011				Sunday (no w/l measurements)
4/11/2011	40.1	6.57	15:26	
4/12/2011	40.1	6.57	16:10	
4/13/2011	40.1	6.57	8:15	
4/14/2011	40.1	6.57	14:05	
4/15/2011	40.1	6.57	10:20	
4/16/2011				Saturday (no w/l measurements)
4/17/2011	40.1	6.57	9:20	
4/18/2011	40.1	6.57	9:46	
4/19/2011	40.1	6.57	13:09	
4/20/2011	40.1	6.57	11:12	CRA Sampled
4/21/2011	40.1	6.57	10:10	
4/22/2011	40.1	6.57	13:15	
4/23/2011	40.1	6.57	8:45	
4/24/2011	40.1	6.57	16:28	
4/25/2011	40.1	6.57	13:22	
4/26/2011	40.1	6.57	17:48	
4/27/2011	40.1	6.57	15:15	
4/28/2011	40.1	6.57	16:23	
4/29/2011	40.1	6.57	14:42	

TABLE 2.3

**2011 PUMPING DATA
GRAVEL UNDERDRAIN SUMP
EAST PLANT AREA VAULT
GM CETC BEDFORD FACILITY
BEDFORD, INDIANA**

Monitoring Location Information

	depth until 08/08/11	08/09/11 to 08/16/11	08/17/11 to 09/11/11	new depth from 09/12/11
Top of sump (datum reference)	708.81	719.61	730.41	738.21
Bottom of sump (feet BTOS)	46.67	57.47	68.27	76.07
Diameter of sump (feet)	1.5	1.5	1.5	1.5

Date	Water Level (feet BTOS)	Water Depth (feet AFOS)	Time of Water Level	Comments
			Measurement (hh:mm)	
4/30/2011	40.1	6.57	13:14	
5/1/2011	40.1	6.57	9:28	
5/2/2011	40.1	6.57	12:51	
5/3/2011	40.1	6.57	13:20	
5/4/2011	40.1	6.57	13:44	
5/5/2011	40.1	6.57	14:04	
5/6/2011	40.1	6.57	9:15	
5/7/2011				Saturday (no w/l measurements)
5/8/2011				Sunday (no w/l measurements)
5/9/2011	40.1	6.57	11:16	
5/10/2011	40.1	6.57	10:35	
5/11/2011	40.1	6.57	14:00	CRA Sampled
5/12/2011	40.1	6.57	13:07	
5/13/2011	40.1	6.57	13:43	
5/14/2011	40.1	6.57	15:30	
5/15/2011	40.1	6.57	12:53	
5/16/2011	40.1	6.57	14:28	
5/17/2011	40.1	6.57	13:12	
5/18/2011	40.1	6.57	10:38	
5/19/2011	40.1	6.57	14:03	
5/20/2011	40.1	6.57	12:55	
5/21/2011	40.1	6.57	13:34	
5/22/2011				Sunday (no w/l measurements)
5/23/2011	40.1	6.57	13:15	
5/24/2011	40.1	6.57	11:30	
5/25/2011	40.1	6.57	10:40	
5/26/2011	40.1	6.57	13:26	
5/27/2011	40.1	6.57	12:55	
5/28/2011				Saturday (no w/l measurements)
5/29/2011	40.1	6.57	11:43	
5/30/2011				Holiday (no w/l measurements)
5/31/2011	40.1	6.57	12:55	
6/1/2011	40.1	6.57	10:15	
6/2/2011	40.1	6.57	13:24	
6/3/2011	40.1	6.57	14:03	
6/4/2011	40.1	6.57	13:45	
6/5/2011				Sunday (no w/l measurements)
6/6/2011	40.0	6.67	8:20	
6/7/2011	40.0	6.67	10:30	
6/8/2011	40.0	6.67	14:10	CRA Sampled
6/9/2011	40.0	6.67	13:15	
6/10/2011	40.0	6.67	11:26	
6/11/2011	40.0	6.67	9:37	
6/12/2011				Sunday (no w/l measurements)
6/13/2011	40.0	6.67	7:42	
6/14/2011	40.0	6.67	8:20	
6/15/2011	40.0	6.67	10:30	
6/16/2011	40.0	6.67	9:15	
6/17/2011	40.0	6.67	8:25	
6/18/2011	40.0	6.67	9:30	
6/19/2011				Sunday (no w/l measurements)
6/20/2011				
6/21/2011	40.0	6.67	8:10	
6/22/2011	40.0	6.67	8:30	
6/23/2011	40.0	6.67	10:28	
6/24/2011	40.0	6.67	12:56	
6/25/2011	40.0	6.67	9:00	
6/26/2011	40.0	6.67	10:16	
6/27/2011	40.0	6.67	10:52	
6/28/2011	40.0	6.67	9:20	

TABLE 2.3

**2011 PUMPING DATA
GRAVEL UNDERDRAIN SUMP
EAST PLANT AREA VAULT
GM CETC BEDFORD FACILITY
BEDFORD, INDIANA**

Monitoring Location Information

	depth until 08/08/11	08/09/11 to 08/16/11	08/17/11 to 09/11/11	new depth from 09/12/11
Top of sump (datum reference)	708.81	719.61	730.41	738.21
Bottom of sump (feet BTOS)	46.67	57.47	68.27	76.07
Diameter of sump (feet)	1.5	1.5	1.5	1.5

Date	Water Level (feet BTOS)	Water Depth (feet AFOS)	Time of Water Level	Comments
			Measurement (hh:mm)	
6/29/2011	40.0	6.67	8:10	
6/30/2011	40.0	6.67	9:03	
7/1/2011	40.0	6.67	8:30	
7/2/2011				Saturday (no w/l measurements)
7/3/2011				Sunday (no w/l measurements)
7/4/2011				Holiday (no w/l measurements)
7/5/2011	40.0	6.67	8:05	
7/6/2011	40.1	6.57	10:20	
7/7/2011	40.1	6.57	9:13	
7/8/2011	40.1	6.57	13:15	
7/9/2011	40.1	6.57	10:37	
7/10/2011	40.1	6.57	9:10	
7/11/2011	40.0	6.67	9:56	
7/12/2011	40.1	6.57	13:28	
7/13/2011	40.1	6.57	11:10	
7/14/2011	40.1	6.57	9:24	
7/15/2011	40.1	6.57	13:10	
7/16/2011	40.1	6.57	10:17	
7/17/2011				Sunday (no w/l measurements)
7/18/2011	40.1	6.57	9:30	
7/19/2011	40.1	6.57	7:14	
7/20/2011	40.1	6.57	8:35	
7/21/2011	40.1	6.57	9:10	
7/22/2011	40.1	6.57	8:47	
7/23/2011				Saturday (no w/l measurements)
7/24/2011	40.1	6.57	8:07	
7/25/2011	40.1	6.57	8:32	
7/26/2011	40.1	6.57	9:15	
7/27/2011	40.0	6.67	11:19	CRA Sampled
7/28/2011	40.0	6.67	9:28	
7/29/2011	40.0	6.67	10:42	
7/30/2011	40.0	6.67	9:12	
7/31/2011				Sunday (no w/l measurements)
8/1/2011	40.1	6.57	14:34	
8/2/2011	40.1	6.57	9:14	
8/3/2011	40.1	6.57	8:37	
8/4/2011				
8/5/2011	40.1	6.57	13:20	
8/6/2011	40.1	6.57	9:27	
8/7/2011	40.0	6.67	10:00	
8/8/2011	40.1	6.57	9:00	Raised up 10.8 ft
8/9/2011	50.9	6.57	14:30	
8/10/2011	50.9	6.57	15:50	
8/11/2011	50.8	6.67	15:27	CRA Sampled
8/12/2011	50.7	6.77	16:54	
8/13/2011	50.7	6.77	11:20	
8/14/2011	50.7	6.77	8:17	
8/15/2011				
8/16/2011	50.7	6.77	8:02	
8/17/2011	61.7	6.57	11:10	Raised Up 10.8 ft
8/18/2011	61.7	6.57	9:07	
8/19/2011	61.7	6.57	13:54	
8/20/2011	61.7	6.57	7:20	
8/21/2011	61.7	6.57	10:15	
8/22/2011	61.5	6.77	14:20	
8/23/2011	61.5	6.77	13:04	
8/24/2011	61.5	6.77	11:12	
8/25/2011	61.5	6.77	10:40	
8/26/2011	61.5	6.77	9:17	
8/27/2011	61.5	6.77	11:32	
8/28/2011				Sunday (no w/l measurements)
8/29/2011	61.5	6.77	14:14	

TABLE 2.3
2011 PUMPING DATA
GRAVEL UNDERDRAIN SUMP
EAST PLANT AREA VAULT
GM CETC BEDFORD FACILITY
BEDFORD, INDIANA

Monitoring Location Information

	depth until 08/08/11	08/09/11 to 08/16/11	08/17/11 to 09/11/11	new depth from 09/12/11
Top of sump (datum reference)	708.81	719.61	730.41	738.21
Bottom of sump (feet BTOS)	46.67	57.47	68.27	76.07
Diameter of sump (feet)	1.5	1.5	1.5	1.5

Date	Water Level (feet BTOS)	Water Depth (feet AFOS)	Time of Water Level	Comments
			Measurement (hh:mm)	
8/30/2011	61.5	6.77	9:11	
8/31/2011	61.5	6.77	8:40	
9/1/2011	61.5	6.77	8:15	
9/2/2011	61.5	6.77	9:37	
9/3/2011				Saturday (no w/l measurements)
9/4/2011	61.5	6.77	10:00	
9/5/2011				Holiday (no w/l measurements)
9/6/2011	61.5	6.77	14:26	
9/7/2011	61.5	6.77	13:35	
9/8/2011	61.5	6.77	9:10	
9/9/2011	61.5	6.77	10:46	
9/10/2011	61.5	6.77	8:35	
9/11/2011				Sunday (no w/l measurements)
9/12/2011	69.4	6.67	13:01	Raised up 7.75 ft
9/13/2011	69.4	6.67	9:24	
9/14/2011	69.4	6.67	13:42	
9/15/2011	69.4	6.67	8:19	
9/16/2011	69.4	6.67	9:20	
9/17/2011	69.4	6.67	10:04	
9/18/2011	69.4	6.67	9:00	
9/19/2011	69.3	6.77	13:15	
9/20/2011	69.3	6.77	11:25	
9/21/2011	69.3	6.77	13:07	
9/22/2011	69.3	6.77	9:09	
9/23/2011	69.4	6.67	10:34	
9/24/2011				Saturday (no w/l measurements)
9/25/2011				Sunday (no w/l measurements)
9/26/2011	69.2	6.87	13:30	
9/27/2011	69.2	6.87	9:45	CRA Sampled
9/28/2011	69.2	6.87	8:07	
9/29/2011	69.2	6.87	10:24	
9/30/2011	69.2	6.87	12:39	
10/1/2011	69.2	6.87	9:20	
10/2/2011	69.2	6.87	11:14	
10/3/2011	69.2	6.87	10:38	
10/4/2011	69.1	6.97	8:10	
10/5/2011	69.1	6.97	13:40	
10/6/2011	69.1	6.97	15:10	
10/7/2011	69.1	6.97	14:30	
10/8/2011	69.1	6.97	9:16	
10/9/2011				Sunday (no w/l measurements)
10/10/2011	69.1	6.97	10:05	
10/11/2011	69.1	6.97	8:27	
10/12/2011	69.1	6.97	11:03	
10/13/2011	69.1	6.97	9:10	
10/14/2011	69.1	6.97	8:14	
10/15/2011	69.1	6.97	13:35	
10/16/2011	69.1	6.97	10:20	
10/17/2011	69.1	6.97	9:00	
10/18/2011	69.1	6.97	7:35	
10/19/2011	69.1	6.97	8:16	
10/20/2011	69.1	6.97	9:30	
10/21/2011	69.1	6.97	10:40	
10/22/2011				Saturday (no w/l measurements)
10/23/2011				Sunday (no w/l measurements)
10/24/2011	69.1	6.97	8:24	
10/25/2011	69.1	6.97	9:15	
10/26/2011	69.1	6.97	13:10	CRA Sampled
10/27/2011	69.1	6.97	10:07	
10/28/2011	69.1	6.97	11:17	
10/29/2011	69.1	6.97	9:28	

TABLE 2.3
2011 PUMPING DATA
GRAVEL UNDERDRAIN SUMP
EAST PLANT AREA VAULT
GM CETC BEDFORD FACILITY
BEDFORD, INDIANA

Monitoring Location Information

	depth until	08/09/11 to	08/17/11 to	new depth from
	08/08/11	08/16/11	09/11/11	09/12/11
Top of sump (datum reference)	708.81	719.61	730.41	738.21
Bottom of sump (feet BTOS)	46.67	57.47	68.27	76.07
Diameter of sump (feet)	1.5	1.5	1.5	1.5

Date	Water Level (feet BTOS)	Water Depth (feet AFOS)	Time of Water Level	Comments
			Measurement (hh:mm)	
10/30/2011	69.1	6.97	13:45	
10/31/2011	69.1	6.97	13:07	
11/1/2011	69.1	6.97	10:42	
11/2/2011	69.1	6.97	8:15	
11/3/2011	69.1	6.97	9:24	
11/4/2011	69.1	6.97	13:10	
11/5/2011	69.1	6.97	10:59	
11/6/2011				Sunday (no w/l measurements)
11/7/2011	69.1	6.97	11:28	
11/8/2011				Could not take measurement - instrument stuck in well
11/9/2011				Could not take measurement - instrument stuck in well
11/10/2011				Could not take measurement - instrument stuck in well
11/11/2011				Holiday (no w/l measurements)
11/12/2011				Saturday (no w/l measurements)
11/13/2011				Sunday (no w/l measurements)
11/14/2011				Could not take measurement - instrument stuck in well
11/15/2011				Could not take measurement - instrument stuck in well
11/16/2011				Could not take measurement - instrument stuck in well
11/17/2011				Could not take measurement - instrument stuck in well
11/18/2011				Could not take measurement - instrument stuck in well
11/19/2011				Saturday (no w/l measurements)
11/20/2011				Sunday (no w/l measurements)
11/21/2011				Could not take measurement - instrument stuck in well
11/22/2011				CRA Sampled. Could not take measurement - instrument stuck in well
11/23/2011				Could not take measurement - instrument stuck in well
11/24/2011				Holiday (no w/l measurements)
11/25/2011				Could not take measurement - instrument stuck in well
11/26/2011				Saturday (no w/l measurements)
11/27/2011				Sunday (no w/l measurements)
11/28/2011				Could not take measurement - instrument stuck in well
11/29/2011				Could not take measurement - instrument stuck in well
11/30/2011	69.1	6.97	13:28	
12/1/2011	69.1	6.97	12:10	
12/2/2011	69.1	6.97	15:47	
12/3/2011	69.1	6.97	11:39	
12/4/2011				Sunday (no w/l measurements)
12/5/2011	69.1	6.97	14:15	
12/6/2011	69.1	6.97	9:24	
12/7/2011	69.1	6.97	7:40	
12/8/2011	69.1	6.97	12:20	
12/9/2011	69.1	6.97	12:09	
12/10/2011	69.1	6.97	12:30	
12/11/2011	69.1	6.97	14:10	
12/12/2011	69.1	6.97	16:25	
12/13/2011	69.1	6.97	11:17	
12/14/2011	69.1	6.97	7:34	
12/15/2011	69.1	6.97	11:35	CRA Sampled
12/16/2011	69.1	6.97	16:40	
12/17/2011	69.1	6.97	14:24	
12/18/2011				Sunday (no w/l measurements)
12/19/2011	69.1	6.97	16:45	
12/20/2011	69.1	6.97	11:09	
12/21/2011	69.1	6.97	13:07	
12/22/2011	69.1	6.97	9:10	
12/23/2011	69.1	6.97	9:40	
12/24/2011				
12/25/2011	69.1	6.97	11:25	
12/26/2011				Holiday (no w/l measurements)
12/27/2011				
12/28/2011				
12/29/2011	69.1	6.97	13:30	
12/30/2011				

TABLE 2.3

**2011 PUMPING DATA
GRAVEL UNDERDRAIN SUMP
EAST PLANT AREA VAULT
GM CETC BEDFORD FACILITY
BEDFORD, INDIANA**

Monitoring Location Information

	depth until	08/09/11 to	08/17/11 to	new depth from
	08/08/11	08/16/11	09/11/11	09/12/11
<i>Top of sump (datum reference)</i>	708.81	719.61	730.41	738.21
<i>Bottom of sump (feet BTOS)</i>	46.67	57.47	68.27	76.07
<i>Diameter of sump (feet)</i>	1.5	1.5	1.5	1.5

<i>Date</i>	<i>Water Level (feet BTOS)</i>	<i>Water Depth (feet AFOS)</i>	<i>Time of Water Level</i>	<i>Comments</i>
			<i>Measurement (hh:mm)</i>	
12/31/2011				Saturday (no w/l measurements)

Notes:

w/l - Water Level

The permanent pump installed in the underdrain sump on November 10, 2008 is a 3 foot vertical submersible pump that requires 2 to 3 feet of water above the pump intake (at the top of the pump) ; however, it was advised that 5 ft of water be maintained above the pump in order to operate properly. Therefore, in order to ensure the motor remains cool, the water depth in the underdrain sump is expected to rise to the 6 to 7 foot range prior to pumping.

TABLE 2.4
MAXIMUM WATER ELEVATION SUMMARY
EAST PLANT AREA VAULT
GM CETC BEDFORD FACILITY
BEDFORD, INDIANA

<i>Date</i>	<i>Maximum Water Level, measured in feet</i>					
	<i>LCS¹</i>		<i>LDS²</i>		<i>Underdrain System³</i>	
	<i>BTOS</i>	<i>AFOS</i>	<i>BTOS</i>	<i>AFOS</i>	<i>BTOS</i>	<i>AFOS</i>
<i>Jan-11</i>	59.7	5.0	63.0	0.8	40.1	6.6
<i>Feb-11</i>	59.4	5.3	62.6	1.2	40.1	6.6
<i>Mar-11</i>	59.2	5.5	62.4	1.4	40.0	6.7
<i>Apr-11</i>	59.0	5.7	62.3	1.5	40.1	6.6
<i>May-11</i>	58.7	6.0	62.7	1.1	40.1	6.6
<i>Jun-11</i>	58.4	6.3	62.9	0.9	40.0	6.7
<i>Jul-11</i>	58.2	6.5	62.8	1.0	40.0	6.7
<i>Aug-11</i>	58.0	6.7	62.6	1.2	61.5	6.8
<i>Sep-11</i>	62.7	7.1	71.3	1.7	69.2	6.9
<i>Oct-11</i>	62.2	7.6	71.0	2.0	69.1	7.0
<i>Nov-11</i>	61.5	8.3	70.3	2.7	69.1	7.0
<i>Dec-11</i>	61.3	8.5	70.1	2.9	69.1	7.0

Notes:

BTOS - Below top of sump

AFOS - Above floor of sump

Top of sump (datum reference) = 0.0

Diameter of LCS and LDS sumps = 6.0 feet

Diameter of Underdrain sump = 1.5 feet

¹ LCS bottom of sump (BTOS) = 64.7 feet from January 1, 2011 to September 10, 2011, and 69.8 feet from September 11, 2011 through December 31, 2011.

² LDS bottom of sump (BTOS) = 63.8 feet from January 1, 2011 until September 1, 2011, 67.8 feet from September 2 to 10, 2010, and 73.0 feet from September 11 to December 31, 2011.

³ Underdrain System bottom of sump (feet BTOS) = 46.7 feet from January 1, 2011 to August 8, 2011, 57.5 feet from August 9 to 16, 2011, 68.3 feet from August 17, 2011 to September 11, 2011, and 76.1 feet from September 12, 2011 through December 31, 2011.

Note: The permanent pump installed in the underdrain system sump is a 3 foot vertical submersible pump that requires 2 to 3 feet of water above the pump intake (at the top of the pump); however, it was advised that 5 ft of water be maintained above the pump in order for the pump to operate properly; therefore, the water depth in the underdrain sump is expected to rise to the 6 to 7 foot range prior to implementing pumping.

TABLE 2.5

SUMMARY OF MONTHLY TOTAL VOLUME OF WATER TREATED IN SSC WTP
EAST PLANT AREA VAULT
GM CETC BEDFORD FACILITY
BEDFORD, INDIANA

<i>Month</i>	<i>Number of Operational Days</i>	<i>Volume of Water Treated/Discharged (gallons x 10⁶)</i>	<i>Daily Average (gpm)</i>
Jan-11	27	0.990	25
Feb-11	26	1.192	32
Mar-11	16	1.240	54
Apr-11	26	2.490	66
May-11	2	0.000	0
Jun-11	1	0.000	0
Jul-11	0	0.000	-
Aug-11	31	1.423	32
Sep-11	18	0.309	12
Oct-11	29	0.371	9
Nov-11	31	1.773	40
Dec-11	28	2.111	52
<i>Total</i>	235	11.898	
<i>Month Average</i>	-	0.992	
<i>Daily Average</i>	-	0.051	

TABLE 3.1

**SUMMARY OF PCBs ANALYTICAL RESULTS FOR EI CA750 FIRST SEMI-ANNUAL (2011) GROUNDWATER SAMPLES
EAST PLANT AREA VAULT
GM CETC BEDFORD FACILITY
BEDFORD, INDIANA**

Sample Area		<i>P015</i>	<i>EastPlantArea</i>	<i>EastPlantArea</i>	<i>EastPlantArea</i>	<i>EastPlantArea</i>
Sample Location		<i>Tributary 3-3</i>	<i>CH-42</i>	<i>CH-42</i>	<i>CH-42</i>	<i>CH-42</i>
Sample Identification		<i>SW-031511-ET-169</i>	<i>GW-031711-JK-174</i>	<i>GW-031711-JK-174</i>	<i>GW-031711-JK-175</i>	<i>GW-031711-JK-175</i>
Sample Date		<i>3/15/2011</i>	<i>3/14/2011</i>	<i>3/17/2011</i>	<i>3/14/2011</i>	<i>3/17/2011</i>
Sample Type					<i>Duplicate</i>	<i>Duplicate</i>
	<i>Units</i>					
<i>PCBs</i>						
Aroclor-1016 (PCB-1016)	µg/L	0.20 U	0.20 U	--	0.20 U	--
Aroclor-1221 (PCB-1221)	µg/L	0.20 U	0.20 U	--	0.20 U	--
Aroclor-1232 (PCB-1232)	µg/L	0.20 U	0.20 U	--	0.20 U	--
Aroclor-1242 (PCB-1242)	µg/L	0.20 U	0.11 J	--	0.11 J	--
Aroclor-1248 (PCB-1248)	µg/L	0.20 U	0.20 U	--	0.20 U	--
Aroclor-1254 (PCB-1254)	µg/L	0.20 U	0.20 U	--	0.20 U	--
Aroclor-1260 (PCB-1260)	µg/L	0.20 U	0.20 U	--	0.20 U	--
Total PCBs	µg/L	ND	0.11 J	--	0.11 J	--
Aroclor-1016 (PCB-1016) (dissolved)	µg/L	0.20 U	0.20 U	--	0.20 U	--
Aroclor-1221 (PCB-1221) (dissolved)	µg/L	0.20 U	0.20 U	--	0.20 U	--
Aroclor-1232 (PCB-1232) (dissolved)	µg/L	0.20 U	0.20 U	--	0.20 U	--
Aroclor-1242 (PCB-1242) (dissolved)	µg/L	0.20 U	0.20 U	--	0.20 U	--
Aroclor-1248 (PCB-1248) (dissolved)	µg/L	0.20 U	0.20 U	--	0.20 U	--
Aroclor-1254 (PCB-1254) (dissolved)	µg/L	0.20 U	0.20 U	--	0.20 U	--
Aroclor-1260 (PCB-1260) (dissolved)	µg/L	0.20 U	0.20 U	--	0.20 U	--
Total PCBs (dissolved)	µg/L	ND	ND	--	ND	--

Notes:

U - Not present at or above the associated value.

J - Estimated concentration.

UJ - Estimated reporting limit.

np - No Purge

TABLE 3.1

**SUMMARY OF PCBs ANALYTICAL RESULTS FOR EI CA750 FIRST SEMI-ANNUAL (2011) GROUNDWATER SAMPLES
EAST PLANT AREA VAULT
GM CETC BEDFORD FACILITY
BEDFORD, INDIANA**

Sample Area		<i>EastPlantArea</i>	<i>EastPlantArea</i>	<i>EastPlantArea</i>	<i>MonitoringWell_RFIBoundary_WestPlantArea</i>
Sample Location		<i>CH-42A</i>	<i>CH-43</i>	<i>CH-44</i>	<i>MW-X033Y147S</i>
Sample Identification		<i>GW-031811-ET-177</i>	<i>GW-032111-JK-180</i>	<i>GW-031811-JK-178</i>	<i>GW-031511-JK-171</i>
Sample Date		<i>3/18/2011</i>	<i>3/21/2011</i>	<i>3/18/2011</i>	<i>3/15/2011</i>
Sample Type					
	<i>Units</i>				
<i>PCBs</i>					
Aroclor-1016 (PCB-1016)	µg/L	0.20 U	0.20 U	0.20 U	0.20 U
Aroclor-1221 (PCB-1221)	µg/L	0.20 U	0.20 U	0.20 U	0.20 U
Aroclor-1232 (PCB-1232)	µg/L	0.20 U	0.20 U	0.20 U	0.20 U
Aroclor-1242 (PCB-1242)	µg/L	0.28	0.17 J	0.20 U	0.20 U
Aroclor-1248 (PCB-1248)	µg/L	0.20 U	0.20 U	0.20 U	0.20 U
Aroclor-1254 (PCB-1254)	µg/L	0.20 U	0.20 U	0.20 U	0.20 U
Aroclor-1260 (PCB-1260)	µg/L	0.20 U	0.20 U	0.20 U	0.20 U
Total PCBs	µg/L	0.28	0.17 J	ND	ND
Aroclor-1016 (PCB-1016) (dissolved)	µg/L	0.20 U	0.20 U	0.20 U	0.20 U
Aroclor-1221 (PCB-1221) (dissolved)	µg/L	0.20 U	0.20 U	0.20 U	0.20 U
Aroclor-1232 (PCB-1232) (dissolved)	µg/L	0.20 U	0.20 U	0.20 U	0.20 U
Aroclor-1242 (PCB-1242) (dissolved)	µg/L	0.20 U	0.20 U	0.20 U	0.20 U
Aroclor-1248 (PCB-1248) (dissolved)	µg/L	0.20 U	0.14 J	0.20 U	0.20 U
Aroclor-1254 (PCB-1254) (dissolved)	µg/L	0.20 U	0.20 U	0.20 U	0.20 U
Aroclor-1260 (PCB-1260) (dissolved)	µg/L	0.20 U	0.20 U	0.20 U	0.20 U
Total PCBs (dissolved)	µg/L	ND	0.14 J	ND	ND

Notes:

U - Not present at or above the associated value.

J - Estimated concentration.

UJ - Estimated reporting limit.

np - No Purge

TABLE 3.1

**SUMMARY OF PCBs ANALYTICAL RESULTS FOR EI CA750 FIRST SEMI-ANNUAL (2011) GROUNDWATER SAMPLES
EAST PLANT AREA VAULT
GM CETC BEDFORD FACILITY
BEDFORD, INDIANA**

Sample Area		<i>Plant_property</i>	<i>Plant_Property</i>	<i>Plant_property</i>	<i>A001MonitoringWell_WestPlantArea</i>
Sample Location		<i>MW-X043Y176</i>	<i>MW-X043Y186</i>	<i>MW-X047Y236</i>	<i>MW-X085Y070S-1</i>
Sample Identification		<i>GW-032511-CL-192</i>	<i>GW-041511-JN-193</i>	<i>GW-032211-JK-185</i>	<i>GW-031711-CL-173</i>
Sample Date		<i>3/25/2011</i>	<i>4/15/2011 (np)</i>	<i>3/22/2011</i>	<i>3/14/2011</i>
Sample Type					
	<i>Units</i>				
<i>PCBs</i>					
Aroclor-1016 (PCB-1016)	µg/L	0.20 U	0.20 U	0.20 U	0.20 U
Aroclor-1221 (PCB-1221)	µg/L	0.20 U	0.20 UJ	0.20 U	0.20 U
Aroclor-1232 (PCB-1232)	µg/L	0.20 U	0.20 U	0.20 U	0.20 U
Aroclor-1242 (PCB-1242)	µg/L	0.20 U	0.20 U	0.20 U	0.20 U
Aroclor-1248 (PCB-1248)	µg/L	0.20 U	0.20 U	0.20 U	0.20 U
Aroclor-1254 (PCB-1254)	µg/L	0.20 U	0.20 U	0.20 U	0.20 U
Aroclor-1260 (PCB-1260)	µg/L	0.20 U	0.20 U	0.20 U	0.20 U
Total PCBs	µg/L	ND	ND	ND	ND
Aroclor-1016 (PCB-1016) (dissolved)	µg/L	0.20 U	0.20 U	0.20 U	0.20 U
Aroclor-1221 (PCB-1221) (dissolved)	µg/L	0.20 U	0.20 UJ	0.20 U	0.20 U
Aroclor-1232 (PCB-1232) (dissolved)	µg/L	0.20 U	0.20 U	0.20 U	0.20 U
Aroclor-1242 (PCB-1242) (dissolved)	µg/L	0.20 U	0.20 U	0.20 U	0.20 U
Aroclor-1248 (PCB-1248) (dissolved)	µg/L	0.20 U	0.20 U	0.20 U	0.20 U
Aroclor-1254 (PCB-1254) (dissolved)	µg/L	0.20 U	0.20 U	0.20 U	0.20 U
Aroclor-1260 (PCB-1260) (dissolved)	µg/L	0.20 U	0.20 U	0.20 U	0.20 U
Total PCBs (dissolved)	µg/L	ND	ND	ND	ND

Notes:

U - Not present at or above the associated value.

J - Estimated concentration.

UJ - Estimated reporting limit.

np - No Purge

TABLE 3.1

**SUMMARY OF PCBs ANALYTICAL RESULTS FOR EI CA750 FIRST SEMI-ANNUAL (2011) GROUNDWATER SAMPLES
EAST PLANT AREA VAULT
GM CETC BEDFORD FACILITY
BEDFORD, INDIANA**

Sample Area	<i>A001MonitoringWell_WestPlantArea</i>		<i>A001MonitoringWell_WestPlantArea</i>
Sample Location	<i>MW-X085Y070S-1</i>		<i>MW-X085Y070S-2</i>
Sample Identification	<i>GW-031711-CL-173</i>		<i>GW-031611-CL-172</i>
Sample Date	<i>3/17/2011</i>		<i>3/16/2011</i>
Sample Type			
	<i>Units</i>		
<i>PCBs</i>			
Aroclor-1016 (PCB-1016)	µg/L	--	0.20 U
Aroclor-1221 (PCB-1221)	µg/L	--	0.20 U
Aroclor-1232 (PCB-1232)	µg/L	--	0.20 U
Aroclor-1242 (PCB-1242)	µg/L	--	0.20 U
Aroclor-1248 (PCB-1248)	µg/L	--	0.20 U
Aroclor-1254 (PCB-1254)	µg/L	--	0.20 U
Aroclor-1260 (PCB-1260)	µg/L	--	0.20 U
Total PCBs	µg/L	--	ND
Aroclor-1016 (PCB-1016) (dissolved)	µg/L	--	0.20 U
Aroclor-1221 (PCB-1221) (dissolved)	µg/L	--	0.20 U
Aroclor-1232 (PCB-1232) (dissolved)	µg/L	--	0.20 U
Aroclor-1242 (PCB-1242) (dissolved)	µg/L	--	0.20 U
Aroclor-1248 (PCB-1248) (dissolved)	µg/L	--	0.20 U
Aroclor-1254 (PCB-1254) (dissolved)	µg/L	--	0.20 U
Aroclor-1260 (PCB-1260) (dissolved)	µg/L	--	0.20 U
Total PCBs (dissolved)	µg/L	--	ND

Notes:

U - Not present at or above the associated value.

J - Estimated concentration.

UJ - Estimated reporting limit.

np - No Purge

TABLE 3.1

**SUMMARY OF PCBs ANALYTICAL RESULTS FOR EI CA750 FIRST SEMI-ANNUAL (2011) GROUNDWATER SAMPLES
EAST PLANT AREA VAULT
GM CETC BEDFORD FACILITY
BEDFORD, INDIANA**

Sample Area		<i>A001MonitoringWell_WestPlantArea</i>	<i>RFIBoundary_P216West</i>	<i>P216GM_P216_east</i>	<i>P209</i>
Sample Location		<i>MW-X169Y058S-1</i>	<i>MW-X261Y356D-3</i>	<i>MW-X297Y305D-2</i>	<i>MW-X300Y199I-1</i>
Sample Identification		<i>GW-031511-CL-170</i>	<i>GW-031411-ET-168</i>	<i>GW-032211-CL-183</i>	<i>GW-032111-CL-181</i>
Sample Date		<i>3/15/2011</i>	<i>3/14/2011</i>	<i>3/22/2011</i>	<i>3/21/2011</i>
Sample Type					
	<i>Units</i>				
<i>PCBs</i>					
Aroclor-1016 (PCB-1016)	µg/L	0.20 U	0.20 U	0.20 U	0.20 U
Aroclor-1221 (PCB-1221)	µg/L	0.20 U	0.20 U	0.20 U	0.20 U
Aroclor-1232 (PCB-1232)	µg/L	0.20 U	0.20 U	0.20 U	0.20 U
Aroclor-1242 (PCB-1242)	µg/L	0.20 U	0.20 U	0.20 U	0.20 U
Aroclor-1248 (PCB-1248)	µg/L	0.20 U	0.20 U	0.20 U	0.20 U
Aroclor-1254 (PCB-1254)	µg/L	0.20 U	0.20 U	0.20 U	0.20 U
Aroclor-1260 (PCB-1260)	µg/L	0.20 U	0.20 U	0.20 U	0.20 U
Total PCBs	µg/L	ND	ND	ND	ND
Aroclor-1016 (PCB-1016) (dissolved)	µg/L	0.20 U	0.20 U	0.20 U	0.20 U
Aroclor-1221 (PCB-1221) (dissolved)	µg/L	0.20 U	0.20 U	0.20 U	0.20 U
Aroclor-1232 (PCB-1232) (dissolved)	µg/L	0.20 U	0.20 U	0.20 U	0.20 U
Aroclor-1242 (PCB-1242) (dissolved)	µg/L	0.20 U	0.20 U	0.20 U	0.20 U
Aroclor-1248 (PCB-1248) (dissolved)	µg/L	0.20 U	0.20 U	0.20 U	0.20 U
Aroclor-1254 (PCB-1254) (dissolved)	µg/L	0.20 U	0.20 U	0.20 U	0.20 U
Aroclor-1260 (PCB-1260) (dissolved)	µg/L	0.20 U	0.20 U	0.20 U	0.20 U
Total PCBs (dissolved)	µg/L	ND	ND	ND	ND

Notes:

U - Not present at or above the associated value.

J - Estimated concentration.

UJ - Estimated reporting limit.

np - No Purge

TABLE 3.1

**SUMMARY OF PCBs ANALYTICAL RESULTS FOR EI CA750 FIRST SEMI-ANNUAL (2011) GROUNDWATER SAMPLES
EAST PLANT AREA VAULT
GM CETC BEDFORD FACILITY
BEDFORD, INDIANA**

Sample Area		P209	P209	P209	P006	P006
Sample Location		MW-X300Y199I-2	MW-X300Y199I-4	MW-X300Y199I-4	MW-X315Y115	MW-X315Y115
Sample Identification		GW-032111-CL-179	GW-031711-CL-176	GW-031711-CL-176	GW-032411-ET-188	GW-032411-ET-189
Sample Date		3/21/2011	3/14/2011	3/17/2011	3/24/2011	3/24/2011
Sample Type						Duplicate
	<i>Units</i>					
PCBs						
Aroclor-1016 (PCB-1016)	µg/L	0.20 U	0.20 U	--	0.20 U	0.20 U
Aroclor-1221 (PCB-1221)	µg/L	0.20 U	0.20 U	--	0.20 U	0.20 U
Aroclor-1232 (PCB-1232)	µg/L	0.20 U	0.20 U	--	0.20 U	0.20 U
Aroclor-1242 (PCB-1242)	µg/L	0.20 U	0.20 U	--	0.20 U	0.20 U
Aroclor-1248 (PCB-1248)	µg/L	0.20 U	0.20 U	--	0.20 U	0.20 U
Aroclor-1254 (PCB-1254)	µg/L	0.20 U	0.20 U	--	0.20 U	0.20 U
Aroclor-1260 (PCB-1260)	µg/L	0.20 U	0.20 U	--	0.18 J	0.20 U
Total PCBs	µg/L	ND	ND	--	0.18 J	ND
Aroclor-1016 (PCB-1016) (dissolved)	µg/L	0.20 U	0.20 U	--	0.20 U	0.20 U
Aroclor-1221 (PCB-1221) (dissolved)	µg/L	0.20 U	0.20 U	--	0.20 U	0.20 U
Aroclor-1232 (PCB-1232) (dissolved)	µg/L	0.20 U	0.20 U	--	0.20 U	0.20 U
Aroclor-1242 (PCB-1242) (dissolved)	µg/L	0.20 U	0.20 U	--	0.20 U	0.20 U
Aroclor-1248 (PCB-1248) (dissolved)	µg/L	0.20 U	0.20 U	--	0.20 U	0.20 U
Aroclor-1254 (PCB-1254) (dissolved)	µg/L	0.20 U	0.20 U	--	0.20 U	0.20 U
Aroclor-1260 (PCB-1260) (dissolved)	µg/L	0.20 U	0.20 U	--	0.20 U	0.20 U
Total PCBs (dissolved)	µg/L	ND	ND	--	ND	ND

Notes:

U - Not present at or above the associated value.

J - Estimated concentration.

UJ - Estimated reporting limit.

np - No Purge

TABLE 3.1

**SUMMARY OF PCBs ANALYTICAL RESULTS FOR EI CA750 FIRST SEMI-ANNUAL (2011) GROUNDWATER SAMPLES
EAST PLANT AREA VAULT
GM CETC BEDFORD FACILITY
BEDFORD, INDIANA**

Sample Area		<i>P006</i>	<i>EastPlantArea</i>	<i>EastPlantArea</i>	<i>EastPlantArea</i>	<i>EastPlantArea</i>
Sample Location		<i>MW-X315Y150</i>	<i>CH-42</i>	<i>CH-42</i>	<i>CH-42A</i>	<i>CH-42A</i>
Sample Identification		<i>GW-041511-JN-195</i>	<i>GW-060711-CL-201</i>	<i>GW-060711-CL-202</i>	<i>GW-060611-CL-196</i>	<i>GW-060611-CL-197</i>
Sample Date		<i>4/15/2011 (np)</i>	<i>6/7/2011 (np)</i>	<i>6/7/2011</i>	<i>6/6/2011 (np)</i>	<i>6/6/2011</i>
Sample Type						
	<i>Units</i>					
<i>PCBs</i>						
Aroclor-1016 (PCB-1016)	µg/L	0.20 U	0.22 U	0.20 U	0.19 U	0.20 U
Aroclor-1221 (PCB-1221)	µg/L	0.20 UJ	0.22 U	0.20 U	0.19 U	0.20 U
Aroclor-1232 (PCB-1232)	µg/L	0.20 U	0.22 U	0.20 U	0.19 U	0.20 U
Aroclor-1242 (PCB-1242)	µg/L	0.20 U	0.22 U	0.20 U	0.14 J	0.20 U
Aroclor-1248 (PCB-1248)	µg/L	0.20 U	0.22 U	0.20 U	0.19 U	0.069 J
Aroclor-1254 (PCB-1254)	µg/L	0.20 U	0.22 U	0.20 U	0.19 U	0.20 U
Aroclor-1260 (PCB-1260)	µg/L	0.20 U	0.22 U	0.20 U	0.19 UJ	0.20 UJ
Total PCBs	µg/L	ND	ND	ND	0.14 J	0.069 J
Aroclor-1016 (PCB-1016) (dissolved)	µg/L	0.20 U	0.19 U	0.19 U	0.19 U	0.20 U
Aroclor-1221 (PCB-1221) (dissolved)	µg/L	0.20 UJ	0.19 U	0.19 U	0.19 U	0.20 U
Aroclor-1232 (PCB-1232) (dissolved)	µg/L	0.20 U	0.19 U	0.19 U	0.19 U	0.20 U
Aroclor-1242 (PCB-1242) (dissolved)	µg/L	0.20 U	0.19 U	0.19 U	0.19 U	0.20 U
Aroclor-1248 (PCB-1248) (dissolved)	µg/L	0.20 U	0.19 U	0.19 U	0.19 U	0.20 U
Aroclor-1254 (PCB-1254) (dissolved)	µg/L	0.20 U	0.19 U	0.19 U	0.19 U	0.20 U
Aroclor-1260 (PCB-1260) (dissolved)	µg/L	0.20 U	0.19 U	0.19 U	0.19 UJ	0.20 UJ
Total PCBs (dissolved)	µg/L	ND	ND	ND	ND	ND

Notes:

U - Not present at or above the associated value.

J - Estimated concentration.

UJ - Estimated reporting limit.

np - No Purge

TABLE 3.1

**SUMMARY OF PCBs ANALYTICAL RESULTS FOR EI CA750 FIRST SEMI-ANNUAL (2011) GROUNDWATER SAMPLES
EAST PLANT AREA VAULT
GM CETC BEDFORD FACILITY
BEDFORD, INDIANA**

Sample Area		<i>EastPlantArea</i>	<i>EastPlantArea</i>	<i>EastPlantArea</i>	<i>P006</i>	<i>P006</i>
Sample Location		<i>CH-42A</i>	<i>CH-43</i>	<i>CH-43</i>	<i>MW-X315Y115</i>	<i>MW-X315Y115</i>
Sample Identification		<i>GW-060611-CL-198</i>	<i>GW-060711-CL-199</i>	<i>GW-060711-CL-200</i>	<i>GW-0060811-CL-203</i>	<i>GW-0060811-CL-204</i>
Sample Date		<i>6/6/2011</i>	<i>6/7/2011 (np)</i>	<i>6/7/2011</i>	<i>6/8/2011 (np)</i>	<i>6/8/2011</i>
Sample Type		<i>Duplicate</i>				
	<i>Units</i>					
<i>PCBs</i>						
Aroclor-1016 (PCB-1016)	µg/L	0.19 U	0.19 U	0.20 U	0.20 U	0.19 U
Aroclor-1221 (PCB-1221)	µg/L	0.19 U	0.19 U	0.20 U	0.20 U	0.19 U
Aroclor-1232 (PCB-1232)	µg/L	0.19 U	0.19 U	0.20 U	0.20 U	0.19 U
Aroclor-1242 (PCB-1242)	µg/L	0.19 U	0.095 J	0.086 J	0.20 U	0.19 U
Aroclor-1248 (PCB-1248)	µg/L	0.056 J	0.19 U	0.20 U	0.20 U	0.19 U
Aroclor-1254 (PCB-1254)	µg/L	0.19 U	0.19 U	0.20 U	0.20 U	0.19 U
Aroclor-1260 (PCB-1260)	µg/L	0.19 UJ	0.19 U	0.20 U	0.20 U	0.19 U
Total PCBs	µg/L	0.056 J	0.095 J	0.086 J	ND	ND
Aroclor-1016 (PCB-1016) (dissolved)	µg/L	0.20 U	0.19 U	0.21 U	0.19 U	0.19 U
Aroclor-1221 (PCB-1221) (dissolved)	µg/L	0.20 U	0.19 U	0.21 U	0.19 U	0.19 U
Aroclor-1232 (PCB-1232) (dissolved)	µg/L	0.20 U	0.19 U	0.21 U	0.19 U	0.19 U
Aroclor-1242 (PCB-1242) (dissolved)	µg/L	0.20 U	0.19 U	0.21 U	0.19 U	0.19 U
Aroclor-1248 (PCB-1248) (dissolved)	µg/L	0.20 U	0.19 U	0.21 U	0.19 U	0.19 U
Aroclor-1254 (PCB-1254) (dissolved)	µg/L	0.20 U	0.19 U	0.21 U	0.19 U	0.19 U
Aroclor-1260 (PCB-1260) (dissolved)	µg/L	0.20 UJ	0.19 U	0.21 U	0.19 U	0.19 U
Total PCBs (dissolved)	µg/L	ND	ND	ND	ND	ND

Notes:

U - Not present at or above the associated value.

J - Estimated concentration.

UJ - Estimated reporting limit.

np - No Purge

TABLE 3.2

**SUMMARY OF PCBs ANALYTICAL RESULTS FOR EI CA750 SECOND SEMI-ANNUAL (2011) GROUNDWATER SAMPLES
EAST PLANT AREA VAULT
GM CETC BEDFORD FACILITY
BEDFORD, INDIANA**

Sample Area		<i>P015</i>	<i>EastPlantArea</i>	<i>EastPlantArea</i>	<i>EastPlantArea</i>	<i>EastPlantArea</i>	<i>EastPlantArea</i>
Sample Location		<i>Tributary 3-3</i>	<i>CH-42</i>	<i>CH-42A</i>	<i>CH-42A</i>	<i>CH-43</i>	<i>CH-44</i>
Sample Identification		<i>SW-120911-CL-217</i>	<i>GW-120911-SA-216</i>	<i>GW-121311-CL-222</i>	<i>GW-121311-CL-221</i>	<i>GW-120811-CL-212</i>	<i>GW-120811-MB-213</i>
Sample Date		<i>12/9/2011</i>	<i>12/9/2011</i>	<i>12/13/2011</i>	<i>12/13/2011</i>	<i>12/8/2011</i>	<i>12/8/2011</i>
Sample Type				<i>Duplicate</i>			
	<i>Units</i>						
<i>PCBs</i>							
		0.19 U					
Aroclor-1016 (PCB-1016)	ug/L	0.19 U	0.20 U	0.19 U	0.19 U	0.19 U	0.19 U
Aroclor-1221 (PCB-1221)	ug/L	0.19 U	0.20 U	0.19 U	0.19 U	0.19 U	0.19 U
Aroclor-1232 (PCB-1232)	ug/L	0.11 J	0.20 U	0.19 U	0.19 U	0.19 U	0.19 U
Aroclor-1242 (PCB-1242)	ug/L	0.19 U	0.20 U	0.13 J	0.19 U	0.19 U	0.19 U
Aroclor-1248 (PCB-1248)	ug/L	0.19 U	0.20 U	0.19 U	0.16 J	0.19 U	0.19 U
Aroclor-1254 (PCB-1254)	ug/L	0.19 U	0.20 U	0.19 U	0.19 U	0.19 U	0.19 U
Aroclor-1260 (PCB-1260)	ug/L	0.11 J	0.20 U	0.19 U	0.19 U	0.19 U	0.19 U
Total PCBs	ug/L		ND	0.13 J	0.16 J	ND	ND
		0.19 U					
Aroclor-1016 (PCB-1016) (dissolved)	ug/L	0.19 U	0.19 U	0.19 U	0.21 U	0.20 U	0.22 U
Aroclor-1221 (PCB-1221) (dissolved)	ug/L	0.19 U	0.19 U	0.19 U	0.21 U	0.20 U	0.22 U
Aroclor-1232 (PCB-1232) (dissolved)	ug/L	0.19 U	0.19 U	0.19 U	0.21 U	0.20 U	0.22 U
Aroclor-1242 (PCB-1242) (dissolved)	ug/L	0.19 U	0.19 U	0.19 U	0.21 U	0.20 U	0.22 U
Aroclor-1248 (PCB-1248) (dissolved)	ug/L	0.19 U	0.19 U	0.067 J	0.21 U	0.20 U	0.22 U
Aroclor-1254 (PCB-1254) (dissolved)	ug/L	0.19 U	0.19 U	0.19 U	0.21 U	0.20 U	0.22 U
Aroclor-1260 (PCB-1260) (dissolved)	ug/L	ND	0.19 U	0.19 U	0.21 U	0.20 U	0.22 U
Total PCBs (dissolved)	ug/L		ND	0.067 J	ND	ND	ND

Notes:

U - Not present at or above the associated value.

J - Estimated concentration.

UJ - Estimated reporting limit.

TABLE 3.2

**SUMMARY OF PCBs ANALYTICAL RESULTS FOR EI CA750 SECOND SEMI-ANNUAL (2011) GROUNDWATER SAMPLES
EAST PLANT AREA VAULT
GM CETC BEDFORD FACILITY
BEDFORD, INDIANA**

Sample Area		<i>EastPlantArea</i>	<i>P002</i>	<i>P002_MonitoringWell</i>	<i>MonitoringWell_RFIBoundary_WestPlantArea</i>	<i>Plant_property</i>
Sample Location		<i>CH-9A</i>	<i>MW-X000Y105</i>	<i>MW-X012Y078</i>	<i>MW-X033Y147S</i>	<i>MW-X043Y176</i>
Sample Identification		<i>GW-121311-SA-220</i>	<i>GW-121311-SA-224</i>	<i>GW-121511-CL-229</i>	<i>GW-121211-MB-219</i>	<i>GW-121411-SA-228</i>
Sample Date		<i>12/13/2011</i>	<i>12/13/2011</i>	<i>12/15/2011</i>	<i>12/12/2011</i>	<i>12/14/2011</i>
Sample Type						<i>Duplicate</i>
	<i>Units</i>					
PCBs						
Aroclor-1016 (PCB-1016)	ug/L	0.19 U	0.19 U	0.20 U	0.19 U	0.20 U
Aroclor-1221 (PCB-1221)	ug/L	0.19 U	0.19 U	0.20 U	0.19 U	0.20 U
Aroclor-1232 (PCB-1232)	ug/L	0.19 U	0.19 U	0.20 U	0.19 U	0.20 U
Aroclor-1242 (PCB-1242)	ug/L	1.4	0.19 U	0.20 U	0.19 U	0.20 U
Aroclor-1248 (PCB-1248)	ug/L	0.19 U	0.19 U	0.20 U	0.19 U	0.20 U
Aroclor-1254 (PCB-1254)	ug/L	0.19 U	0.19 U	0.20 U	0.19 U	0.20 U
Aroclor-1260 (PCB-1260)	ug/L	0.19 U	0.19 U	0.20 U	0.19 U	0.20 U
Total PCBs	ug/L	1.4	ND	ND	ND	ND
Aroclor-1016 (PCB-1016) (dissolved)	ug/L	--	0.19 U	0.19 U	0.19 U	0.19 U
Aroclor-1221 (PCB-1221) (dissolved)	ug/L	--	0.19 U	0.19 U	0.19 U	0.19 U
Aroclor-1232 (PCB-1232) (dissolved)	ug/L	--	0.19 U	0.19 U	0.19 U	0.19 U
Aroclor-1242 (PCB-1242) (dissolved)	ug/L	--	0.19 U	0.19 U	0.19 U	0.19 U
Aroclor-1248 (PCB-1248) (dissolved)	ug/L	--	0.19 U	0.19 U	0.19 U	0.19 U
Aroclor-1254 (PCB-1254) (dissolved)	ug/L	--	0.19 U	0.19 U	0.19 U	0.19 U
Aroclor-1260 (PCB-1260) (dissolved)	ug/L	--	0.19 U	0.19 U	0.19 U	0.19 U
Total PCBs (dissolved)	ug/L	--	ND	ND	ND	ND

Notes:

U - Not present at or above the associated value.

J - Estimated concentration.

UJ - Estimated reporting limit.

TABLE 3.2

**SUMMARY OF PCBs ANALYTICAL RESULTS FOR EI CA750 SECOND SEMI-ANNUAL (2011) GROUNDWATER SAMPLES
EAST PLANT AREA VAULT
GM CETC BEDFORD FACILITY
BEDFORD, INDIANA**

Sample Area		<i>Plant_property</i>	<i>Plant_Property</i>	<i>Plant_property</i>	<i>P386_MonitoringWell</i>	<i>A001MonitoringWell_WestPlantArea</i>
Sample Location		<i>MW-X043Y176</i>	<i>MW-X043Y186</i>	<i>MW-X047Y236</i>	<i>MW-X060Y304</i>	<i>MW-X085Y070S-1</i>
Sample Identification		<i>GW-121411-SA-227</i>	<i>GW-120811-CL-215</i>	<i>GW-121211-MB-218</i>	<i>GW-121611-CL-231</i>	<i>GW-120611-SA-207</i>
Sample Date		<i>12/14/2011</i>	<i>12/8/2011</i>	<i>12/12/2011</i>	<i>12/16/2011</i>	<i>12/6/2011</i>
Sample Type						<i>Duplicate</i>
	<i>Units</i>					
PCBs						
Aroclor-1016 (PCB-1016)	ug/L	0.20 U	0.20 U	0.19 U	0.19 U	0.20 U
Aroclor-1221 (PCB-1221)	ug/L	0.20 U	0.20 U	0.19 U	0.19 U	0.20 U
Aroclor-1232 (PCB-1232)	ug/L	0.20 U	0.20 U	0.19 U	0.19 U	0.20 U
Aroclor-1242 (PCB-1242)	ug/L	0.20 U	0.20 U	0.19 U	0.19 U	0.20 U
Aroclor-1248 (PCB-1248)	ug/L	0.20 U	0.20 U	0.19 U	0.085 J	0.20 U
Aroclor-1254 (PCB-1254)	ug/L	0.20 U	0.20 U	0.19 U	0.19 U	0.20 U
Aroclor-1260 (PCB-1260)	ug/L	0.20 U	0.20 U	0.19 U	0.19 U	0.20 U
Total PCBs	ug/L	ND	ND	ND	0.085 J	ND
Aroclor-1016 (PCB-1016) (dissolved)	ug/L	0.20 U	0.21 U	0.21 U	0.21 U	0.19 U
Aroclor-1221 (PCB-1221) (dissolved)	ug/L	0.20 U	0.21 U	0.21 U	0.21 U	0.19 U
Aroclor-1232 (PCB-1232) (dissolved)	ug/L	0.20 U	0.21 U	0.21 U	0.21 U	0.19 U
Aroclor-1242 (PCB-1242) (dissolved)	ug/L	0.20 U	0.21 U	0.21 U	0.21 U	0.19 U
Aroclor-1248 (PCB-1248) (dissolved)	ug/L	0.20 U	0.21 U	0.21 U	0.21 U	0.19 U
Aroclor-1254 (PCB-1254) (dissolved)	ug/L	0.20 U	0.21 U	0.21 U	0.21 U	0.19 U
Aroclor-1260 (PCB-1260) (dissolved)	ug/L	0.20 U	0.21 U	0.21 U	0.21 U	0.19 U
Total PCBs (dissolved)	ug/L	ND	ND	ND	ND	ND

Notes:

U - Not present at or above the associated value.

J - Estimated concentration.

UJ - Estimated reporting limit.

TABLE 3.2

**SUMMARY OF PCBs ANALYTICAL RESULTS FOR EI CA750 SECOND SEMI-ANNUAL (2011) GROUNDWATER SAMPLES
EAST PLANT AREA VAULT
GM CETC BEDFORD FACILITY
BEDFORD, INDIANA**

Sample Area	<i>A001MonitoringWell_WestPlantArea</i>		
Sample Location	<i>MW-X085Y070S-1</i>	<i>MW-X085Y070S-2</i>	<i>MW-X085Y070S-2</i>
Sample Identification	<i>GW-120611-SA-206</i>	<i>GW-031611-CL-172</i>	<i>GW-120811-SA-214</i>
Sample Date	<i>12/6/2011</i>	<i>3/16/2011</i>	<i>12/8/2011</i>
Sample Type			
	<i>Units</i>		
PCBs			
Aroclor-1016 (PCB-1016)	ug/L	0.20 U	0.19 U
Aroclor-1221 (PCB-1221)	ug/L	0.20 U	0.19 U
Aroclor-1232 (PCB-1232)	ug/L	0.20 U	0.19 U
Aroclor-1242 (PCB-1242)	ug/L	0.20 U	0.19 U
Aroclor-1248 (PCB-1248)	ug/L	0.20 U	0.19 U
Aroclor-1254 (PCB-1254)	ug/L	0.20 U	0.19 U
Aroclor-1260 (PCB-1260)	ug/L	0.20 U	0.19 U
Total PCBs	ug/L	ND	ND
Aroclor-1016 (PCB-1016) (dissolved)	ug/L	0.20 U	0.20 U
Aroclor-1221 (PCB-1221) (dissolved)	ug/L	0.20 U	0.20 U
Aroclor-1232 (PCB-1232) (dissolved)	ug/L	0.20 U	0.20 U
Aroclor-1242 (PCB-1242) (dissolved)	ug/L	0.20 U	0.20 U
Aroclor-1248 (PCB-1248) (dissolved)	ug/L	0.20 U	0.20 U
Aroclor-1254 (PCB-1254) (dissolved)	ug/L	0.20 U	0.20 U
Aroclor-1260 (PCB-1260) (dissolved)	ug/L	0.20 U	0.20 U
Total PCBs (dissolved)	ug/L	ND	ND

Notes:

U - Not present at or above the associated value.

J - Estimated concentration.

UJ - Estimated reporting limit.

TABLE 3.2

**SUMMARY OF PCBs ANALYTICAL RESULTS FOR EI CA750 SECOND SEMI-ANNUAL (2011) GROUNDWATER SAMPLES
EAST PLANT AREA VAULT
GM CETC BEDFORD FACILITY
BEDFORD, INDIANA**

Sample Area		<i>A001MonitoringWell_WestPlantArea</i>	<i>RFIBoundary_P216West</i>	<i>P205</i>	<i>P216GM_P216_east</i>	<i>P209</i>
Sample Location		<i>MW-X169Y058S-1</i>	<i>MW-X261Y356D-3</i>	<i>MW-X277Y100</i>	<i>MW-X297Y305D-2</i>	<i>MW-X300Y199I-2</i>
Sample Identification		<i>GW-120611-MB-205</i>	<i>GW-120711-MB-208</i>	<i>GW-121311-MB-223</i>	<i>GW-120711-MB-211</i>	<i>GW-120711-SA-210</i>
Sample Date		<i>12/6/2011</i>	<i>12/7/2011</i>	<i>12/13/2011</i>	<i>12/7/2011</i>	<i>12/7/2011</i>
Sample Type						
	<i>Units</i>					
PCBs						
Aroclor-1016 (PCB-1016)	ug/L	0.19 U	0.20 U	0.19 U	0.19 U	0.20 U
Aroclor-1221 (PCB-1221)	ug/L	0.19 U	0.20 U	0.19 U	0.19 U	0.20 U
Aroclor-1232 (PCB-1232)	ug/L	0.19 U	0.20 U	0.19 U	0.19 U	0.20 U
Aroclor-1242 (PCB-1242)	ug/L	0.19 U	0.20 U	0.12 J	0.19 U	0.20 U
Aroclor-1248 (PCB-1248)	ug/L	0.19 U	0.20 U	0.19 U	0.19 U	0.20 U
Aroclor-1254 (PCB-1254)	ug/L	0.19 U	0.20 U	0.19 U	0.19 U	0.20 U
Aroclor-1260 (PCB-1260)	ug/L	0.19 U	0.20 U	0.19 U	0.19 U	0.20 U
Total PCBs	ug/L	ND	ND	0.12 J	ND	ND
Aroclor-1016 (PCB-1016) (dissolved)	ug/L	0.19 U	0.21 U	0.19 U	0.20 U	0.20 U
Aroclor-1221 (PCB-1221) (dissolved)	ug/L	0.19 U	0.21 U	0.19 U	0.20 U	0.20 U
Aroclor-1232 (PCB-1232) (dissolved)	ug/L	0.19 U	0.21 U	0.19 U	0.20 U	0.20 U
Aroclor-1242 (PCB-1242) (dissolved)	ug/L	0.19 U	0.21 U	0.19 U	0.20 U	0.20 U
Aroclor-1248 (PCB-1248) (dissolved)	ug/L	0.19 U	0.21 U	0.19 U	0.20 U	0.20 U
Aroclor-1254 (PCB-1254) (dissolved)	ug/L	0.19 U	0.21 U	0.19 U	0.20 U	0.20 U
Aroclor-1260 (PCB-1260) (dissolved)	ug/L	0.19 U	0.21 U	0.19 U	0.20 U	0.20 U
Total PCBs (dissolved)	ug/L	ND	ND	ND	ND	ND

Notes:

U - Not present at or above the associated value.

J - Estimated concentration.

UJ - Estimated reporting limit.

TABLE 3.2

**SUMMARY OF PCBs ANALYTICAL RESULTS FOR EI CA750 SECOND SEMI-ANNUAL (2011) GROUNDWATER SAMPLES
EAST PLANT AREA VAULT
GM CETC BEDFORD FACILITY
BEDFORD, INDIANA**

Sample Area		P209	P006	P006
Sample Location		MW-X300Y199I-4	MW-X315Y115	MW-X315Y150
Sample Identification		GW-121411-CL-226	GW-121411-MB-225	GW-121611-CL-230
Sample Date		12/14/2011	12/14/2011	12/16/2011
Sample Type				
		<i>Units</i>		
<i>PCBs</i>				
Aroclor-1016 (PCB-1016)	ug/L	0.19 U	0.19 U	0.19 U
Aroclor-1221 (PCB-1221)	ug/L	0.19 U	0.19 U	0.19 U
Aroclor-1232 (PCB-1232)	ug/L	0.19 U	0.19 U	0.19 U
Aroclor-1242 (PCB-1242)	ug/L	0.19 U	0.19 U	0.19 U
Aroclor-1248 (PCB-1248)	ug/L	0.19 U	0.19 U	0.19 U
Aroclor-1254 (PCB-1254)	ug/L	0.19 U	0.19 U	0.19 U
Aroclor-1260 (PCB-1260)	ug/L	0.19 U	0.19 U	0.19 U
Total PCBs	ug/L	ND	ND	ND
Aroclor-1016 (PCB-1016) (dissolved)	ug/L	0.20 U	0.22 U	0.23 U
Aroclor-1221 (PCB-1221) (dissolved)	ug/L	0.20 U	0.22 U	0.23 U
Aroclor-1232 (PCB-1232) (dissolved)	ug/L	0.20 U	0.22 U	0.23 U
Aroclor-1242 (PCB-1242) (dissolved)	ug/L	0.20 U	0.22 U	0.23 U
Aroclor-1248 (PCB-1248) (dissolved)	ug/L	0.20 U	0.22 U	0.23 U
Aroclor-1254 (PCB-1254) (dissolved)	ug/L	0.20 U	0.22 U	0.23 U
Aroclor-1260 (PCB-1260) (dissolved)	ug/L	0.20 U	0.22 U	0.23 U
Total PCBs (dissolved)	ug/L	ND	ND	ND

Notes:

U - Not present at or above the associated value.

J - Estimated concentration.

UJ - Estimated reporting limit.

TABLE 3.3
LEACHATE COLLECTION SYSTEM MONITORING ANALYTICAL RESULTS
EAST PLANT AREA VAULT
GM CETC BEDFORD FACILITY
BEDFORD, INDIANA

Sample Area		A007	A007	A007	A007	A007	A007	A007	A007	A007	A007	A007	A007
Sample Location		EPA LCS	EPA LCS	EPA LCS	EPA LCS	EPA LCS	EPA LCS	EPA LCS	EPA LCS	EPA LCS	EPA LCS	EPA LCS	EPA LCS
Sample Identification		WL-AO17-012611-GS-39558	WL-AO17-022311-GS-39575	WL-AO17-030911-GS-39587	WL-AO17-042011-SM-39605	WL-AO17-051111-SM-39622	WL-AO17-060811-GS-39644	WL-AO17-072711-GS-39673	WL-AO17-081111-GS-39686	WL-AO17-092711-GS-39712	WL-AO17-102611-GS-39736	WL-AO17-112211-GS-39755	WL-AO17-121511-GS-39764
Sample Date	Units	1/26/2011	2/23/2011	3/9/2011	4/20/2011	5/11/2011	6/8/2011	7/27/2011	8/11/2011	9/27/2011	10/26/2011	11/22/2011	12/15/2011
PCBs													
Aroclor-1016 (PCB-1016)	ug/L	0.20 U	0.20 U	0.20 U	0.20 U	0.20 U	0.19 U	1.9 U	0.19 U	0.20 U	0.20 U	0.19 U	0.19 U
Aroclor-1221 (PCB-1221)	ug/L	0.20 U	0.20 U	0.20 U	0.20 U	0.20 U	0.19 U	1.9 U	0.19 U	0.20 U	0.20 U	0.19 U	0.19 U
Aroclor-1232 (PCB-1232)	ug/L	0.20 U	0.20 U	0.20 U	0.20 U	0.20 U	0.19 U	1.9 U	0.19 U	0.20 U	0.20 U	0.19 U	0.19 U
Aroclor-1242 (PCB-1242)	ug/L	0.47	0.20 U	0.50	1.7	0.42	0.19 U	27 E	0.14 J	0.29	0.33	0.19 U	0.19 U
Aroclor-1248 (PCB-1248)	ug/L	0.20 U	0.20 U	0.20 U	0.20 U	0.20 U	0.19 U	1.9 U	0.19 U	0.20 U	0.20 U	0.19 U	0.19 U
Aroclor-1254 (PCB-1254)	ug/L	0.20 U	0.20 U	0.20 U	0.13 J	0.20 U	0.19 U	1.9 U	0.19 U	0.047 J	0.20 U	0.19 U	0.19 U
Aroclor-1260 (PCB-1260)	ug/L	0.20 U	0.20 U	0.20 U	0.20 U	0.20 U	0.19 U	1.9 U	0.19 U	0.20 U	0.20 U	0.19 U	0.19 U
Total PCBs	ug/L	0.47	ND	0.5	1.83 J	0.42	ND	27 E	0.14 J	0.337 J	0.33	ND	ND
Volatile Organic Compounds													
1,1,1-Trichloroethane	ug/L	1.0 U	1.0 U	1.0 U	1.0 U	1.0 U	1.0 U	1.0 U*	1.0 U	1.0 U	1.0 U	1.0 U	1.0 U
1,1,2,2-Tetrachloroethane	ug/L	--	--	--	1.0 U	1.0 U	1.0 U	1.0 U	1.0 U	1.0 U	1.0 U	1.0 U	1.0 U
1,1,2-Trichloroethane	ug/L	1.0 U	1.0 U	1.0 U	1.0 U	1.0 U	1.0 U	1.0 U	1.0 U	1.0 U	1.0 U	1.0 U	1.0 U
1,1-Dichloroethane	ug/L	1.0 U	1.0 U	1.0 U	1.0 U	1.0 U	1.0 U	1.0 U	1.0 U	1.0 U	1.0 U	1.0 U	1.0 U
1,1-Dichloroethene	ug/L	1.0 U	1.0 U	1.0 U	1.0 U	1.0 U	1.0 U	1.0 U	1.0 U	1.0 U	1.0 U	1.0 U	1.0 U
1,2-Dichlorobenzene	ug/L	1.0 U	1.0 U	1.0 U	1.0 U	1.0 U	1.0 U	1.0 U	1.0 U	1.0 U	1.0 U	1.0 U	1.0 U
1,2-Dichloroethane	ug/L	1.0 U	1.0 U	1.0 U	1.0 U	1.0 U	1.0 U	1.0 U	1.0 U	1.0 U	1.0 U	1.0 U	1.0 U
1,2-Dichloropropane	ug/L	1.0 U	1.0 U	1.0 U	1.0 U	1.0 U	1.0 U	1.0 U	1.0 U	1.0 U	1.0 U	1.0 U	1.0 U
1,3-Dichlorobenzene	ug/L	1.0 U	0.14 J	1.0 U	1.0 U	1.0 U	1.0 U	1.0 U	1.0 U	1.0 U	1.0 U	1.0 U	1.0 U
1,4-Dichlorobenzene	ug/L	1.0 U	0.30 J	1.0 U	1.0 U	1.0 U	1.0 U	1.0 U	1.0 U	1.0 U	1.0 U	1.0 U	1.0 U
2-Chloroethyl vinyl ether	ug/L	2.0 U	2.0 U	2.0 U	10 U	10 U	10 U	10 U	10 U	10 U	10 U	10 U	10 U
Benzene	ug/L	1.0 U	1.0 U	1.0 U	1.0 U	1.0 U	1.0 U	1.0 U	1.0 U	1.0 U	1.0 U	1.0 U	1.0 U
Bromodichloromethane	ug/L	1.0 U	1.0 U	1.0 U	1.0 U	1.0 U	1.0 U	1.0 U	1.0 U	1.0 U	1.0 U	1.0 U	1.0 U
Bromoform	ug/L	1.0 U	1.0 U	1.0 U	1.0 U	1.0 U	1.0 U	1.0 U	1.0 U	1.0 U	1.0 U	1.0 U	1.0 U
Bromomethane (Methyl bromide)	ug/L	1.0 U	1.0 U	1.0 U	1.0 U	1.0 U	1.0 U	1.0 U	1.0 U	1.0 U	1.0 U	1.0 U	1.0 U
Carbon tetrachloride	ug/L	1.0 U	1.0 U	1.0 U	1.0 U	1.0 U	1.0 U	1.0 U	1.0 U	1.0 U	1.0 U	1.0 U	1.0 U
Chlorobenzene	ug/L	1.0 U	1.0 U	1.0 U	1.0 U	1.0 U	1.0 U	1.0 U	1.0 U	1.0 U	1.0 U	1.0 U	1.0 U
Chloroethane	ug/L	1.0 U	1.0 U	1.0 U	1.0 U	1.0 U	1.0 U	1.0 U	1.0 U	1.0 U	1.0 U	1.0 U	1.0 U
Chloroform (Trichloromethane)	ug/L	1.0 U	1.0 U	1.0 U	1.0 U	1.0 U	1.0 U	1.0 U	1.0 U	1.0 U	1.0 U	1.0 U	1.0 U
Chloromethane (Methyl chloride)	ug/L	1.0 U	1.0 U	1.0 U	1.0 U	1.0 U	1.0 U	1.0 U	1.0 U	1.0 U	1.0 U	1.0 U	1.0 U
cis-1,3-Dichloropropene	ug/L	1.0 U	1.0 U	1.0 U	1.0 U	1.0 U	1.0 U	1.0 U	1.0 U	1.0 U	1.0 U	1.0 U	1.0 U
Dibromochloromethane	ug/L	1.0 U	1.0 U	1.0 U	1.0 U	1.0 U	1.0 U	1.0 U	1.0 U	1.0 U	1.0 U	1.0 U	1.0 U
Dichlorodifluoromethane (CFC-12)	ug/L	1.0 U	1.0 U	1.0 U	1.0 U	1.0 U	1.0 U	1.0 U	1.0 U	1.0 U	1.0 U	1.0 U	1.0 U
Ethylbenzene	ug/L	1.0 U	1.0 U	1.0 U	1.0 U	1.0 U	1.0 U	1.0 U	1.0 U	1.0 U	1.0 U	1.0 U	1.0 U
Methylene chloride	ug/L	1.0 U	1.0 U	1.0 U	1.0 U	1.0 U	1.0 U	1.0 U	1.0 U	1.0 U	1.0 U	1.0 U	1.0 U
Styrene	ug/L	1.0 U	1.0 U	1.0 U	1.0 U	1.0 U	1.0 U	1.0 U	1.0 U	1.0 U	1.0 U	1.0 U	1.0 U
Tetrachloroethene	ug/L	1.0 U	1.0 U	1.0 U	1.0 U	1.0 U	1.0 U	1.0 U	1.0 U	1.0 U	1.0 U	1.0 U	1.0 U
Toluene	ug/L	1.0 U	1.0 U	1.0 U	1.0 U	1.0 U	1.0 U	1.0 U	1.0 U	1.0 U	1.0 U	1.0 U	1.0 U
trans-1,2-Dichloroethene	ug/L	1.0 U	1.0 U	1.0 U	1.0 U	1.0 U	1.0 U	1.0 U	1.0 U	1.0 U	1.0 U	1.0 U	1.0 U
trans-1,3-Dichloropropene	ug/L	1.0 U	1.0 U	1.0 U	1.0 U	1.0 U	1.0 U	1.0 U	1.0 U	1.0 U	1.0 U	1.0 U	1.0 U
Trichloroethene	ug/L	--	--	--	1.0 U	1.0 U	--	--	--	--	--	--	--
Trichlorofluoromethane (CFC-11)	ug/L	1.0 U	1.0 U	1.0 U	1.0 U	1.0 U	1.0 U*	1.0 U	1.0 U	1.0 U	1.0 U	1.0 U	1.0 U
Vinyl chloride	ug/L	0.30 J	0.50 J	1.0 U	1.0 U	1.0 U	1.0 U	1.0 U	1.0 U	1.0 U	1.0 U	1.0 U	1.0 U
Field Parameters													
Conductivity, field	mS/cm	2.572	2.111	2.229	1.424	833	0.985	--	--	--	--	--	--
pH, field	s.u.	7.05	7.23	6.65	7.55	7.7	8.34	--	--	--	--	--	--

Notes:
U - Not present at or above the associated value.

TestAmerica - Lab Qualifiers:
J - Laboratory qualified as an estimated value.
* - LCS (laboratory control spike) or LCSD (Duplicate) exceeds the control limits
E - Result exceeded calibration range.

TABLE 3.4

**LEAK DETECTION SYSTEM MONITORING ANALYTICAL RESULTS
EAST PLANT AREA VAULT
GM CETC BEDFORD FACILITY
BEDFORD, INDIANA**

Sample Area		A007	A007	A007	A007
Sample Location		EPA LDS	EPA LDS	EPA LDS	EPA LDS
Sample Identification		WL-AOI7-012611-GS-39559	WL-AOI7-022311-GS-39576	WL-AOI7-030911-GS-39588	WL-AOI7-042011-SM-39606
Sample Date		1/26/2011	2/23/2011	3/9/2011	4/20/2011
	<i>Units</i>				
<i>PCBs</i>					
Aroclor-1016 (PCB-1016)	µg/L	0.20 U	0.20 U	0.20 U	0.20 U
Aroclor-1221 (PCB-1221)	µg/L	0.20 U	0.20 U	0.20 U	0.20 U
Aroclor-1232 (PCB-1232)	µg/L	0.20 U	0.20 U	0.20 U	0.20 U
Aroclor-1242 (PCB-1242)	µg/L	0.20 U	0.20 U	0.98	3.6
Aroclor-1248 (PCB-1248)	µg/L	0.20 U	0.20 U	0.20 U	0.20 U
Aroclor-1254 (PCB-1254)	µg/L	0.20 U	0.20 U	0.20 U	0.20 U
Aroclor-1260 (PCB-1260)	µg/L	0.20 U	0.20 U	0.20 U	0.20 U
Total PCBs	µg/L	ND	ND	0.98	3.6

Notes:

U - Not present at or above the associated value.

TABLE 3.4

**LEAK DETECTION SYSTEM MONITORING ANALYTICAL RESULTS
EAST PLANT AREA VAULT
GM CETC BEDFORD FACILITY
BEDFORD, INDIANA**

Sample Area		<i>A007</i>	<i>A007</i>	<i>A007</i>	<i>A007</i>
Sample Location		<i>EPA LDS</i>	<i>EPA LDS</i>	<i>EPA LDS</i>	<i>EPA LDS</i>
Sample Identification		WL-AOI7-051111-SM-39623	WL-AOI7-060811-GS-39645	WL-AOI7-072711-GS-39674	WL-AOI7-081111-GS-39687
Sample Date		5/11/2011	6/8/2011	7/27/2011	8/11/2011
	<i>Units</i>				
<i>PCBs</i>					
Aroclor-1016 (PCB-1016)	µg/L	0.20 U	0.19 U	0.20 U	0.95 U
Aroclor-1221 (PCB-1221)	µg/L	0.20 U	0.19 U	0.20 U	0.95 U
Aroclor-1232 (PCB-1232)	µg/L	0.20 U	0.19 U	0.20 U	0.95 U
Aroclor-1242 (PCB-1242)	µg/L	0.20 U	0.31	0.20 U	3.6
Aroclor-1248 (PCB-1248)	µg/L	0.20 U	0.19 U	0.24	0.95 U
Aroclor-1254 (PCB-1254)	µg/L	0.20 U	0.19 U	0.20 U	0.95 U
Aroclor-1260 (PCB-1260)	µg/L	0.20 U	0.19 U	0.20 U	0.95 U
Total PCBs	µg/L	ND	0.31	0.24	3.6

Notes:

U - Not present at or above the associa

TABLE 3.4

**LEAK DETECTION SYSTEM MONITORING ANALYTICAL RESULTS
EAST PLANT AREA VAULT
GM CETC BEDFORD FACILITY
BEDFORD, INDIANA**

Sample Area		A007	A007	A007	A007
Sample Location		EPA LDS	EPA LDS	EPA LDS	EPA LDS
Sample Identification		WL-AOI7-092711-GS-39713	WL-AOI7-102611-GS-39737	WL-AOI7-112211-GS-39756	WL-AOI7-121511-GS-39765
Sample Date		9/27/2011	10/26/2011	11/22/2011	12/15/2011
	<i>Units</i>				
<i>PCBs</i>					
Aroclor-1016 (PCB-1016)	µg/L	0.20 U	0.20 U	0.20 U	0.20 U
Aroclor-1221 (PCB-1221)	µg/L	0.20 U	0.20 U	0.20 U	0.20 U
Aroclor-1232 (PCB-1232)	µg/L	0.20 U	0.20 U	0.20 U	0.20 U
Aroclor-1242 (PCB-1242)	µg/L	0.20 U	0.20 U	0.20 U	0.20 U
Aroclor-1248 (PCB-1248)	µg/L	0.20 U	0.20 U	0.20 U	0.20 U
Aroclor-1254 (PCB-1254)	µg/L	0.20 U	0.20 U	0.20 U	0.20 U
Aroclor-1260 (PCB-1260)	µg/L	0.20 U	0.20 U	0.20 U	0.20 U
Total PCBs	µg/L	ND	ND	ND	ND

Notes:

U - Not present at or above the associa

TABLE 3.5

**SSC WTP (CRA WWTP TAG 66) EFFLUENT ANALYTICAL RESULTS
EAST PLANT AREA VAULT
GM CETC BEDFORD FACILITY
BEDFORD, INDIANA**

Sample Area		<i>A010 East Plant</i>	<i>A010 East Plant</i>	<i>A010 East Plant</i>
Sample Location		<i>CRA WWTP Tag 66</i>	<i>CRA WWTP Tag 66</i>	<i>CRA WWTP Tag 66</i>
Sample Identification		<i>WW-AOI10-011211-GS-35374</i>	<i>WW-AOI10-022811-GS-35375</i>	<i>WW-AOI10-030711-GS-35383</i>
Sample Date		<i>1/12/2011</i>	<i>2/28/2011</i>	<i>3/7/2011</i>
Sample Type				
	<i>Units</i>			
PCBs				
Aroclor-1016 (PCB-1016)	µg/L	0.10 U	0.10 U	0.10 U
Aroclor-1221 (PCB-1221)	µg/L	0.10 U	0.10 U	0.10 U
Aroclor-1232 (PCB-1232)	µg/L	0.10 U	0.10 U	0.10 U
Aroclor-1242 (PCB-1242)	µg/L	0.10 U	0.10 U	0.10 U
Aroclor-1248 (PCB-1248)	µg/L	0.10 U	0.10 U	0.10 U
Aroclor-1254 (PCB-1254)	µg/L	0.10 U	0.10 U	0.10 U
Aroclor-1260 (PCB-1260)	µg/L	0.10 U	0.10 U	0.10 U
Total PCBs	µg/L	ND	ND	ND
General Chemistry				
Biochemical oxygen demand (carbonaceous)	µg/L	2000 U	--	--
Chemical oxygen demand (COD)	µg/L	9300 B	--	--
Chloride	µg/L	--	--	--
Nitrite/Nitrate	µg/L	400 J	--	--
Oil and grease (HEM), total	µg/L	4800 U	--	--
Phosphorus	µg/L	100 U	--	--
Total kjeldahl nitrogen (TKN)	µg/L	3000 U	--	--
Total suspended solids (TSS)	µg/L	4000 U	--	--

Notes:

U - Not present at or above the associated value.

TestAmerica - Lab Qualifiers:

J - Laboratory qualified as an estimated value.

B - Laboratory qualifier: Method blank contamination. The associated method blank contains the target analyte at a reportable level.

TABLE 3.5

**SSC WTP (CRA WWTP TAG 66) EFFLUENT ANALYTICAL RESULTS
EAST PLANT AREA VAULT
GM CETC BEDFORD FACILITY
BEDFORD, INDIANA**

Sample Area		<i>A010 East Plant</i>	<i>A010 East Plant</i>	<i>A010 East Plant</i>
Sample Location		<i>CRA WWTP Tag 66</i>	<i>CRA WWTP Tag 66</i>	<i>CRA WWTP Tag 66</i>
Sample Identification		<i>WW-AOI10-041211-GS-35390</i>	<i>WW-AOI10-050511-GS-35407</i>	<i>WW-AOI10-061611-GS-35415</i>
Sample Date		<i>4/12/2011</i>	<i>5/5/2011</i>	<i>6/16/2011</i>
Sample Type				
	<i>Units</i>			
<i>PCBs</i>				
Aroclor-1016 (PCB-1016)	µg/L	0.20 U	0.14 U	0.19 U
Aroclor-1221 (PCB-1221)	µg/L	0.20 U	0.14 U	0.19 U
Aroclor-1232 (PCB-1232)	µg/L	0.20 U	0.14 U	0.19 U
Aroclor-1242 (PCB-1242)	µg/L	0.20 U	0.19	0.19 U
Aroclor-1248 (PCB-1248)	µg/L	0.20 U	0.14 U	0.19 U
Aroclor-1254 (PCB-1254)	µg/L	0.20 U	0.14 U	0.19 U
Aroclor-1260 (PCB-1260)	µg/L	0.20 U	0.14 U	0.19 U
Total PCBs	µg/L	ND	0.19	ND
<i>General Chemistry</i>				
Biochemical oxygen demand (carbonaceous)	µg/L	--	--	--
Chemical oxygen demand (COD)	µg/L	--	--	--
Chloride	µg/L	--	--	--
Nitrite/Nitrate	µg/L	--	--	--
Oil and grease (HEM), total	µg/L	--	--	--
Phosphorus	µg/L	--	--	--
Total kjeldahl nitrogen (TKN)	µg/L	--	--	--
Total suspended solids (TSS)	µg/L	--	--	--

Notes:

U - Not present at or above the associated value.

TestAmerica - Lab Qualifiers:

J - Laboratory qualified as an estimated value.

B - Laboratory qualifier: Method blank contamination. The a

TABLE 3.5

**SSC WTP (CRA WWTP TAG 66) EFFLUENT ANALYTICAL RESULTS
EAST PLANT AREA VAULT
GM CETC BEDFORD FACILITY
BEDFORD, INDIANA**

Sample Area		<i>A010 East Plant</i>	<i>A010 East Plant</i>	<i>A010 East Plant</i>
Sample Location		<i>CRA WWTP Tag 66</i>	<i>CRA WWTP Tag 66</i>	<i>CRA WWTP Tag 66</i>
Sample Identification		<i>WW-AOI10-061611-GS-35416</i>	<i>WW-AOI10-080211-GS-35433</i>	<i>WW-AOI10-091211-GS-35446</i>
Sample Date		<i>6/16/2011</i>	<i>8/2/2011</i>	<i>9/12/2011</i>
Sample Type				
	<i>Units</i>			
PCBs				
Aroclor-1016 (PCB-1016)	µg/L	--	0.19 U	0.19 U
Aroclor-1221 (PCB-1221)	µg/L	--	0.19 U	0.19 U
Aroclor-1232 (PCB-1232)	µg/L	--	0.19 U	0.19 U
Aroclor-1242 (PCB-1242)	µg/L	--	0.19 U	0.19 U
Aroclor-1248 (PCB-1248)	µg/L	--	0.19 U	0.19 U
Aroclor-1254 (PCB-1254)	µg/L	--	0.19 U	0.19 U
Aroclor-1260 (PCB-1260)	µg/L	--	0.19 U	0.19 U
Total PCBs	µg/L	--	ND	ND
General Chemistry				
Biochemical oxygen demand (carbonaceous)	µg/L	--	--	--
Chemical oxygen demand (COD)	µg/L	--	--	--
Chloride	µg/L	29000	--	--
Nitrite/Nitrate	µg/L	--	--	--
Oil and grease (HEM), total	µg/L	--	--	--
Phosphorus	µg/L	--	--	--
Total kjeldahl nitrogen (TKN)	µg/L	--	--	--
Total suspended solids (TSS)	µg/L	--	--	--

Notes:

U - Not present at or above the associated value.

TestAmerica - Lab Qualifiers:

J - Laboratory qualified as an estimated value.

B - Laboratory qualifier: Method blank contamination. The a

TABLE 3.5

**SSC WTP (CRA WWTP TAG 66) EFFLUENT ANALYTICAL RESULTS
EAST PLANT AREA VAULT
GM CETC BEDFORD FACILITY
BEDFORD, INDIANA**

Sample Area		<i>A010 East Plant</i>	<i>A010 East Plant</i>	<i>A010 East Plant</i>
Sample Location		<i>CRA WWTP Tag 66</i>	<i>CRA WWTP Tag 66</i>	<i>CRA WWTP Tag 66</i>
Sample Identification		<i>WW-AOI10-101011-GS-35453</i>	<i>WW-AOI10-110211-GS-35460</i>	<i>WW-AOI10-120511-GS-35468</i>
Sample Date		<i>10/10/2011</i>	<i>11/2/2011</i>	<i>12/5/2011</i>
Sample Type				
	<i>Units</i>			
PCBs				
Aroclor-1016 (PCB-1016)	µg/L	0.19 U	0.19 U	0.19 U
Aroclor-1221 (PCB-1221)	µg/L	0.19 U	0.19 U	0.19 U
Aroclor-1232 (PCB-1232)	µg/L	0.19 U	0.19 U	0.19 U
Aroclor-1242 (PCB-1242)	µg/L	0.19 U	0.19 U	0.19 U
Aroclor-1248 (PCB-1248)	µg/L	0.19 U	0.19 U	0.19 U
Aroclor-1254 (PCB-1254)	µg/L	0.19 U	0.19 U	0.19 U
Aroclor-1260 (PCB-1260)	µg/L	0.19 U	0.19 U	0.19 U
Total PCBs	µg/L	ND	ND	ND
General Chemistry				
Biochemical oxygen demand (carbonaceous)	µg/L	--	--	--
Chemical oxygen demand (COD)	µg/L	--	--	--
Chloride	µg/L	--	--	--
Nitrite/Nitrate	µg/L	--	--	--
Oil and grease (HEM), total	µg/L	--	--	--
Phosphorus	µg/L	--	--	--
Total kjeldahl nitrogen (TKN)	µg/L	--	--	--
Total suspended solids (TSS)	µg/L	--	--	--

Notes:

U - Not present at or above the associated value.

TestAmerica - Lab Qualifiers:

J - Laboratory qualified as an estimated value.

B - Laboratory qualifier: Method blank contamination. The a