



GM POWERTRAIN BEDFORD FACILITY BEDFORD, INDIANA

RCRA CORRECTIVE ACTION/CERCLA REMOVAL ACTION

GM POWERTRAIN BEDFORD PLANT, BEDFORD, INDIANA

Welcome to the September 2006 Public Information Session September 28, 2006



- Facility located on 152.5 acres and is approximately 1,000,000 square feet
- Approximately 1,000 employees



- Comprehensive Environmental Response, Compensation, and Liability Act (CERCLA) Removal Action (RA)
 - Bailey's Branch and Pleasant Run PCB cleanup of creek sediments and floodplain soil.
 - RA Elements:
 - Control of impacted springs and seeps along creeks;
 - Removal of floodplain soil to 1.8 ppm and sediment to 1 ppm in the creek



REMOVAL ACTION STATUS

RCRA CORRECTIVE ACTION/CERCLA REMOVAL ACTION

GM POWERTRAIN BEDFORD PLANT, BEDFORD, INDIANA

DIVERSION CHANNEL NO. 3

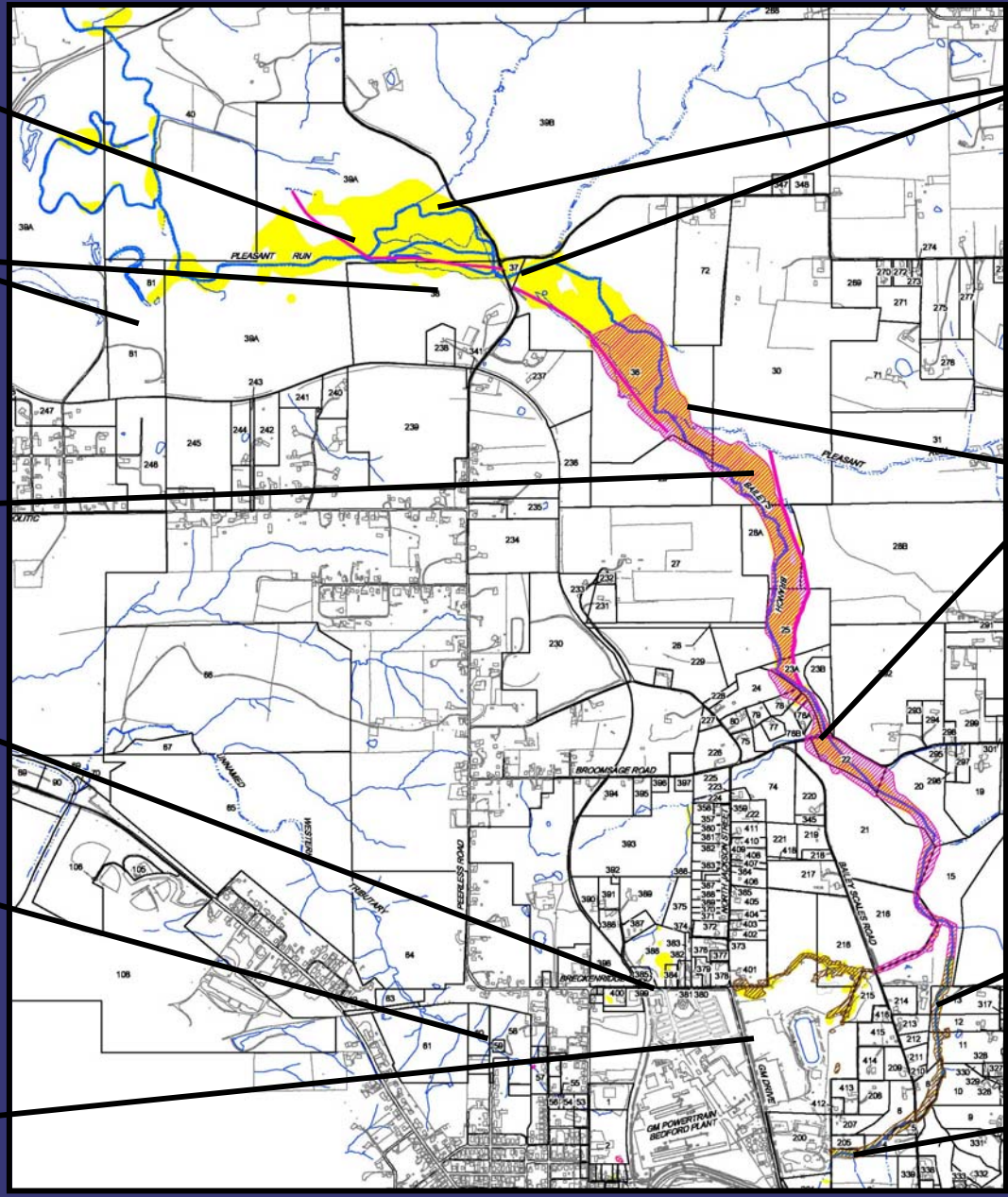
BORROW SOURCE AREA AND HAUL ROAD

EXCAVATION BETWEEN BROOMSAGE ROAD AND PEERLESS ROAD

NORTHERN TRIBUTARY

WESTERN TRIBUTARY

EAST PLANT AREA VAULT



STAGING AREAS

EXCAVATION NEAR BROOMSAGE ROAD AND DOWNSTREAM

RESTORATION EAST OF BAILEY SCALES ROAD

RESTORATION WEST OF BAILEY SCALES ROAD

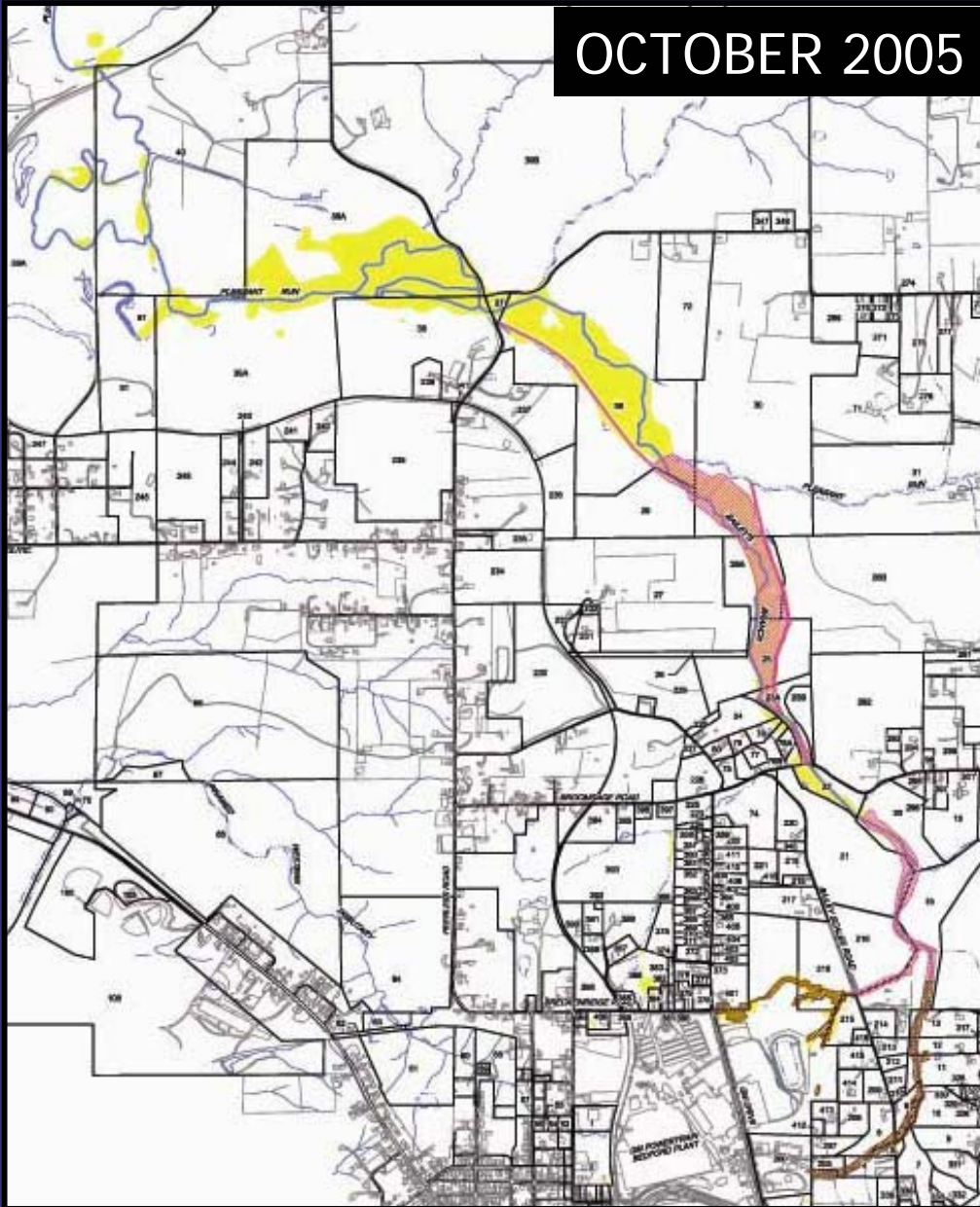


REMOVAL ACTION STATUS JUNE 2005 – JUNE 2006

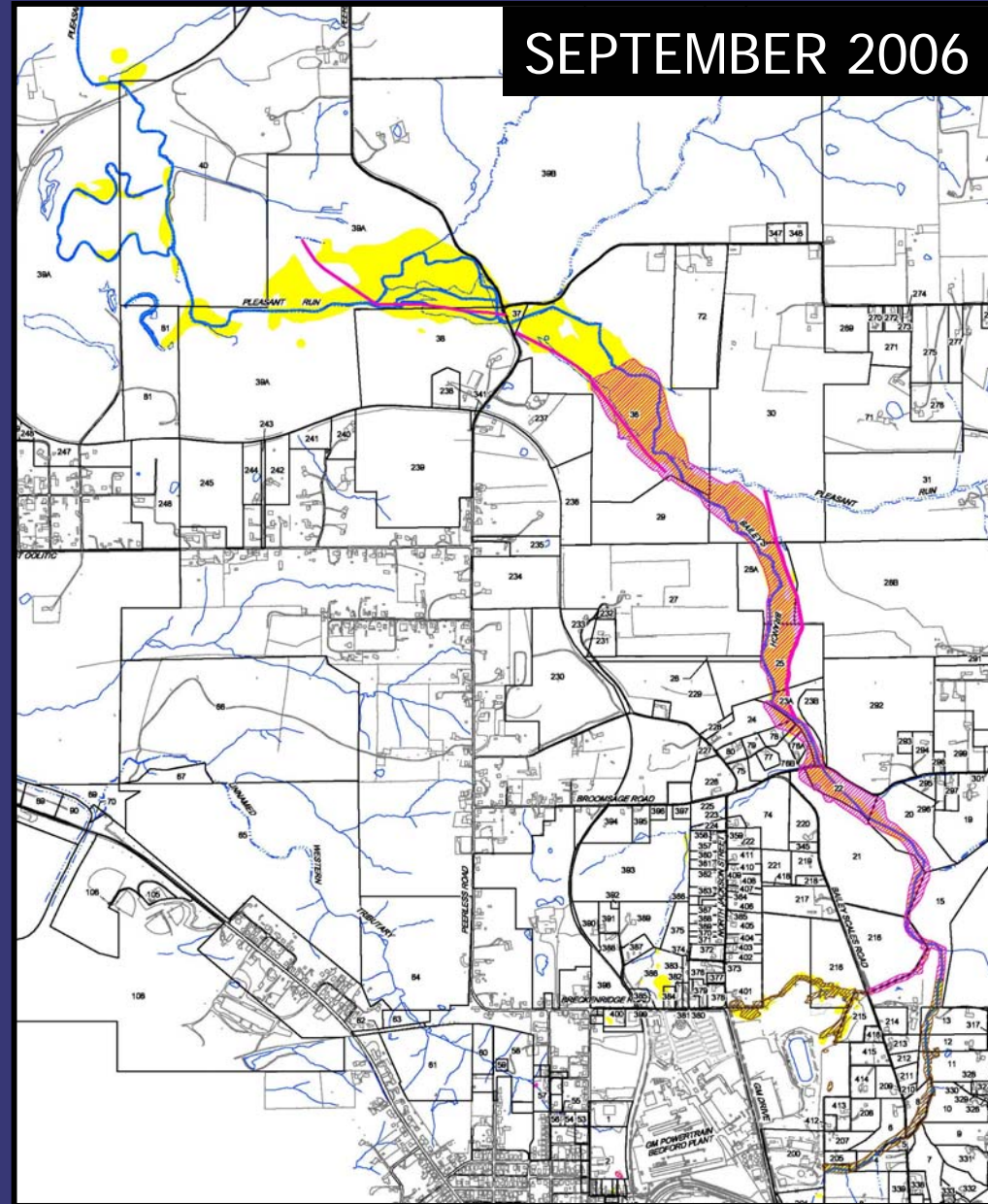
RCRA CORRECTIVE ACTION/CERCLA REMOVAL ACTION

GM POWERTRAIN BEDFORD PLANT, BEDFORD, INDIANA

OCTOBER 2005



SEPTEMBER 2006





REMOVAL ACTION STATUS

RCRA CORRECTIVE ACTION/CERCLA REMOVAL ACTION

GM POWERTRAIN BEDFORD PLANT, BEDFORD, INDIANA



Looking east from Plant property (Outfall 002)



REMOVAL ACTION STATUS

RCRA CORRECTIVE ACTION/CERCLA REMOVAL ACTION

G M P O W E R T R A I N B E D F O R D P L A N T , B E D F O R D , I N D I A N A



Looking west from Bailey Scales Road



REMOVAL ACTION STATUS

RCRA CORRECTIVE ACTION/CERCLA REMOVAL ACTION

GM POWERTRAIN BEDFORD PLANT, BEDFORD, INDIANA



Looking east from
Bailey Scales Road



Looking west towards
Bailey Scales Road



REMOVAL ACTION STATUS

RCRA CORRECTIVE ACTION/CERCLA REMOVAL ACTION

GM POWERTRAIN BEDFORD PLANT, BEDFORD, INDIANA





REMOVAL ACTION STATUS

RCRA CORRECTIVE ACTION/CERCLA REMOVAL ACTION

G M P O W E R T R A I N B E D F O R D P L A N T , B E D F O R D , I N D I A N A





REMOVAL ACTION STATUS

RCRA CORRECTIVE ACTION/CERCLA REMOVAL ACTION

GM POWERTRAIN BEDFORD PLANT, BEDFORD, INDIANA

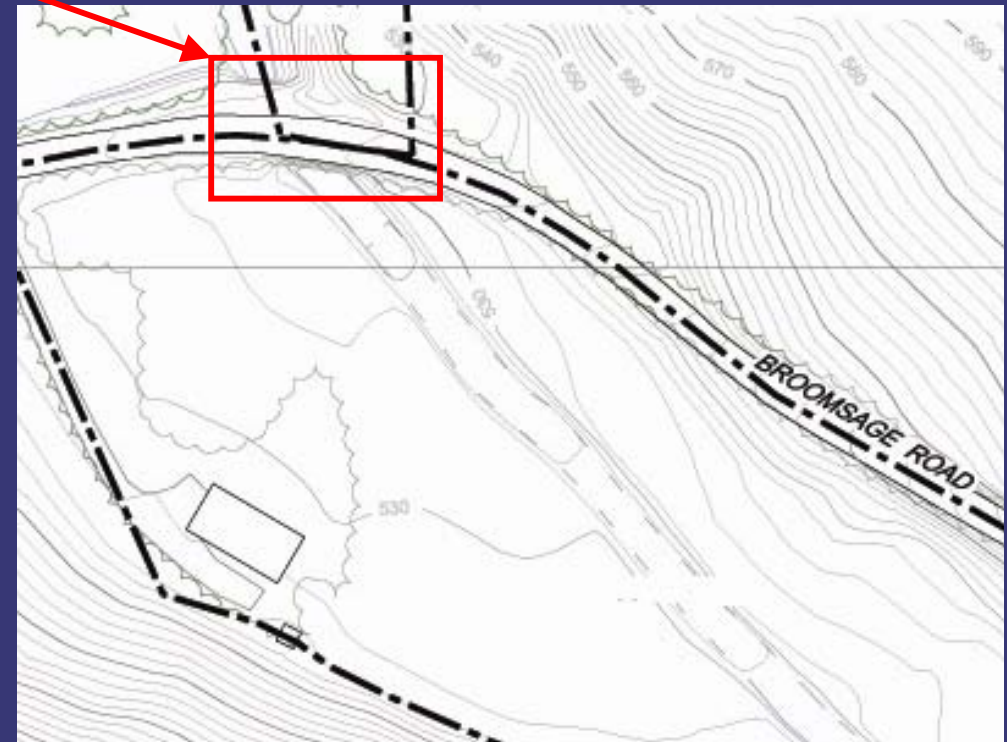
- A paving contractor is on retainer to maintain the roads, as needed. More difficult to perform repair in winter as asphalt plants are shutdown.
- GM contacted local schools regarding school bus routes and hours.
- Contractors are informed of local traffic concerns, including school bus routes and hours.
- CRA is continually monitoring driver safety of truckers.
- Truck Traffic Issues Coordinator (812) 279-0977

The composite image consists of a central map and three photographs. The map shows the Bedford, Indiana area with a purple outline indicating the remediation zone. Key locations marked on the map include Staging Area F, Former Staging Area C, P22 Staging Area, Former P216 Staging Area, AO14 Staging Area, GM Powertrain Bedford Facility, GM Powertrain Bedford Plant, and CRA. The map also shows various roads such as Pleasant Run, New Bridge, DIVE ROAD, BRECKENRIDGE ROAD, and SR 85 (5TH STREET). The three photographs show: 1) A new concrete bridge with metal railings under construction. 2) A paved road with orange safety barriers. 3) A road construction site with a paving machine and workers.



- Broomsage Road Culvert Crossing Over Baileys Branch Creek

- GM has been working with Lawrence County to replace the culvert on Broomsage Road.
- GM is coordinating excavation of material and culvert reconstruction to reduce duration of road closure.
- The road closure is expected to commence early October and take at least five weeks to complete.
- GM is constructing a turnaround east of the culvert crossing for local school buses.





REMOVAL ACTION STATUS

RCRA CORRECTIVE ACTION/CERCLA REMOVAL ACTION

G M P O W E R T R A I N B E D F O R D P L A N T , B E D F O R D , I N D I A N A





REMOVAL ACTION STATUS

RCRA CORRECTIVE ACTION/CERCLA REMOVAL ACTION

GM POWERTRAIN BEDFORD PLANT, BEDFORD, INDIANA





REMOVAL ACTION STATUS

RCRA CORRECTIVE ACTION/CERCLA REMOVAL ACTION

G M P O W E R T R A I N B E D F O R D P L A N T , B E D F O R D , I N D I A N A





REMOVAL ACTION STATUS

RCRA CORRECTIVE ACTION/CERCLA REMOVAL ACTION

GM POWERTRAIN BEDFORD PLANT, BEDFORD, INDIANA





REMOVAL ACTION STATUS

RCRA CORRECTIVE ACTION/CERCLA REMOVAL ACTION

GM POWERTRAIN BEDFORD PLANT, BEDFORD, INDIANA



Diversion Channel No. 3 Excavation





REMOVAL ACTION STATUS

RCRA CORRECTIVE ACTION/CERCLA REMOVAL ACTION

GM POWERTRAIN BEDFORD PLANT, BEDFORD, INDIANA



Staging Area F



Staging Area G



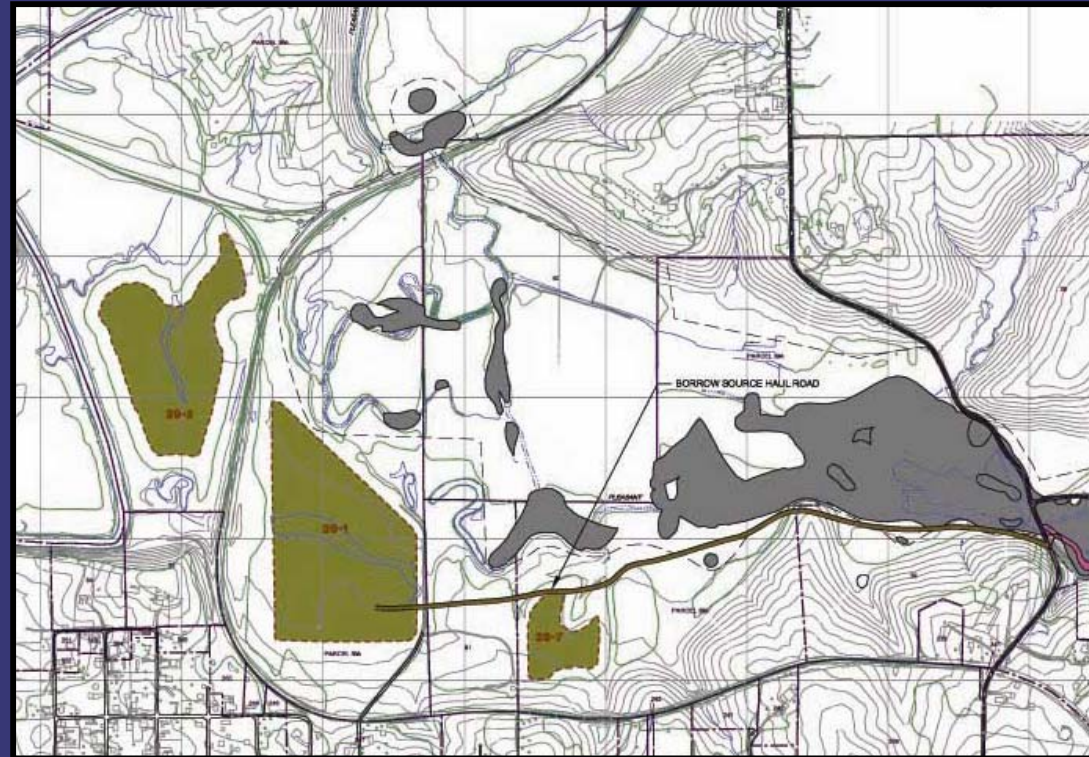
REMOVAL ACTION STATUS BORROW SOURCE AREA

RCRA CORRECTIVE ACTION/CERCLA REMOVAL ACTION

GM POWERTRAIN BEDFORD PLANT, BEDFORD, INDIANA



- GM has created a borrow source for use in restoration.





RCRA CORRECTIVE ACTION

RCRA CORRECTIVE ACTION/CERCLA REMOVAL ACTION

G M P O W E R T R A I N B E D F O R D P L A N T , B E D F O R D , I N D I A N A

- RCRA Corrective Action
 - Conducted under a performance-based agreement with the U.S. EPA Region V. The agreement was signed on March 20, 2001 and amended on October 1, 2002.
 - Continuing to perform soil and groundwater investigation
 - Installing of new groundwater wells and new round of groundwater sampling
 - Dye investigation
 - Implementing Interim Measures
 - East Plant Area
 - Western Tributary
 - Northern Tributary in 2007



STATUS OF RCRA CORRECTIVE ACTION

RCRA CORRECTIVE ACTION/CERCLA REMOVAL ACTION

GM POWERTRAIN BEDFORD PLANT, BEDFORD, INDIANA

UPCOMING ACTIVITIES 2006

- Continue Dye Trace testing west of GM Drive
- Continue implementing Western Tributary IM
- Continue RFI groundwater monitoring





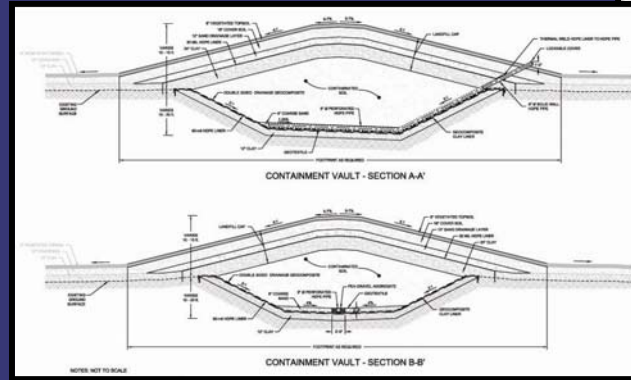
STATUS OF RCRA CORRECTIVE ACTION

RCRA CORRECTIVE ACTION/CERCLA REMOVAL ACTION

GM POWERTRAIN BEDFORD PLANT, BEDFORD, INDIANA

East Plant Area Interim Measure

- Cover System
- Re-use of low PCB Removal Action soil
- Select soil removal
- Landfill cell
- Perimeter Groundwater Collection System
- Long-term maintenance and monitoring





EAST PLANT AREA IM

RCRA CORRECTIVE ACTION/CERCLA REMOVAL ACTION

GM POWERTRAIN BEDFORD PLANT, BEDFORD, INDIANA





COMMUNITY RELATIONS ACTIVITIES

RCRA CORRECTIVE ACTION/CERCLA REMOVAL ACTION

GM POWERTRAIN BEDFORD PLANT, BEDFORD, INDIANA

- Community meetings are held on a quarterly basis
 - This set of meetings are September 27 & 28, 2006.
 - Continuing to experiment with format.
 - Presentations have been and will continue to be posted to the website.
 - The next community meetings are likely to be in November/December 2006.



COMMUNITY RELATIONS ACTIVITIES

RCRA CORRECTIVE ACTION/CERCLA REMOVAL ACTION

GM POWERTRAIN BEDFORD PLANT, BEDFORD, INDIANA

- Project website at:
<http://www.BedfordPowertrainCorrectiveAction.com>
- Quarterly Community Meetings now available on the website
- GM Community Relations Contact person is Becki Akers
The toll-free number remains (866) 223-0856
- Public Information Repository (GM Plant)
Currently by appointment
- Public Information Repository (Library)
- Community Liaison Panel (CLP)
- Periodic information sessions
- Periodic Project Fact Sheets (Fourteen issued to date)
- Truck Traffic Issues Coordinator – (812) 279-0977