



GM POWERTRAIN BEDFORD FACILITY BEDFORD, INDIANA

RCRA CORRECTIVE ACTION/CERCLA REMOVAL ACTION

GM POWERTRAIN BEDFORD PLANT, BEDFORD, INDIANA

Welcome to the June 2007 Public Information Session

June 7, 2007



- Facility located on 152.5 acres and is approximately 1,000,000 square feet
- Approximately 1,000 employees



REMOVAL ACTION

RCRA CORRECTIVE ACTION/CERCLA REMOVAL ACTION

G M P O W E R T R A I N B E D F O R D P L A N T , B E D F O R D , I N D I A N A

- Comprehensive Environmental Response, Compensation, and Liability Act (CERCLA) Removal Action (RA)
 - Bailey's Branch and Pleasant Run PCB cleanup of creek sediments and floodplain soil.
 - RA Elements:
 - Control of impacted springs and seeps along creeks;
 - Removal of floodplain soil to 1.8 ppm and sediment to 1 ppm in the creek



REMOVAL ACTION STATUS

RCRA CORRECTIVE ACTION/CERCLA REMOVAL ACTION

GM POWERTRAIN BEDFORD PLANT, BEDFORD, INDIANA

**DIVERSION
CHANNEL NO. 3**

**BORROW SOURCE
AREA AND HAUL
ROAD**

**EXCAVATION
BETWEEN
BROOMSAGE ROAD
AND PEERLESS
ROAD**

**NORTHERN
TRIBUTARY**

**WESTERN
TRIBUTARY**

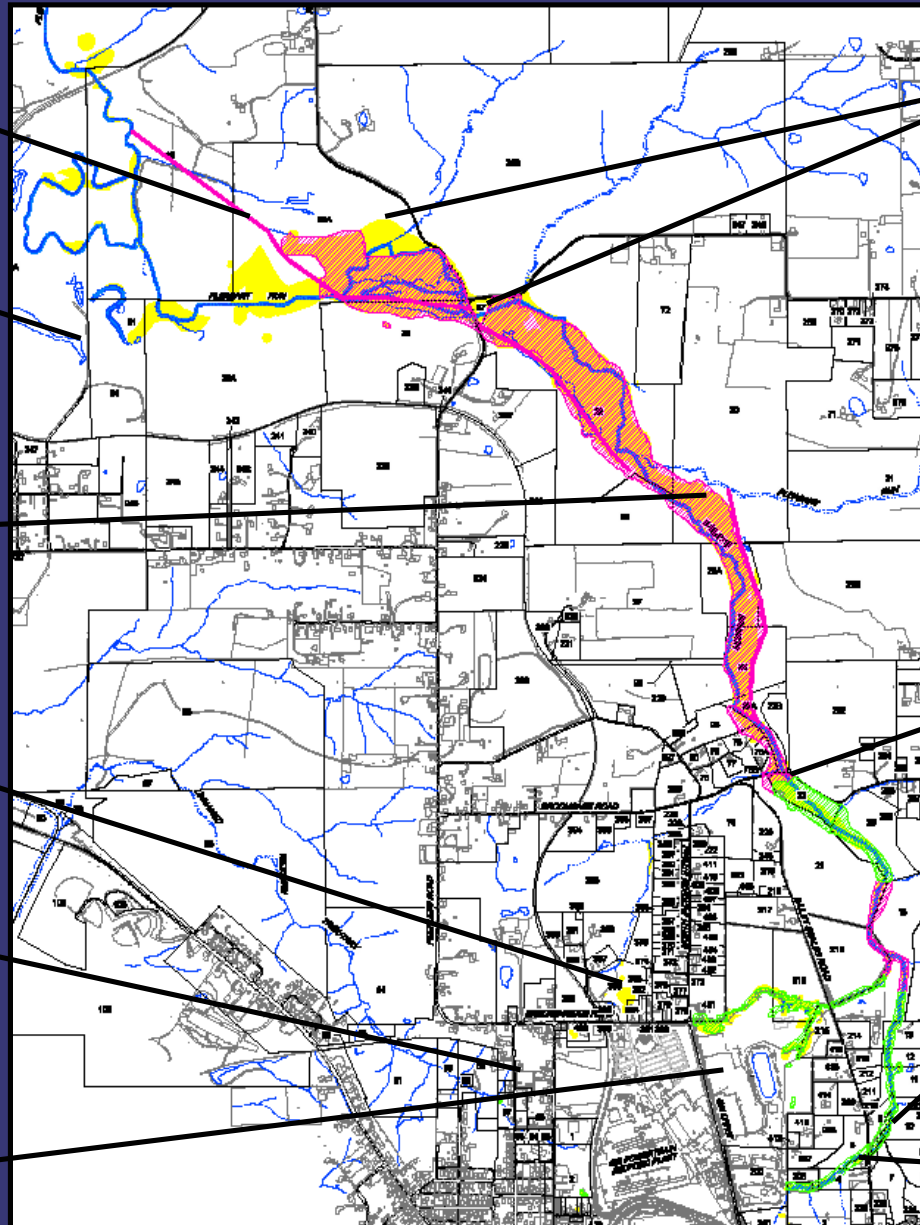
**EAST PLANT AREA
VAULT**

STAGING AREAS

**NEW BROOMSAGE
ROAD CULVERT**

**RESTORATION
EAST OF BAILEY
SCALES ROAD**

**RESTORATION
WEST OF BAILEY
SCALES ROAD**



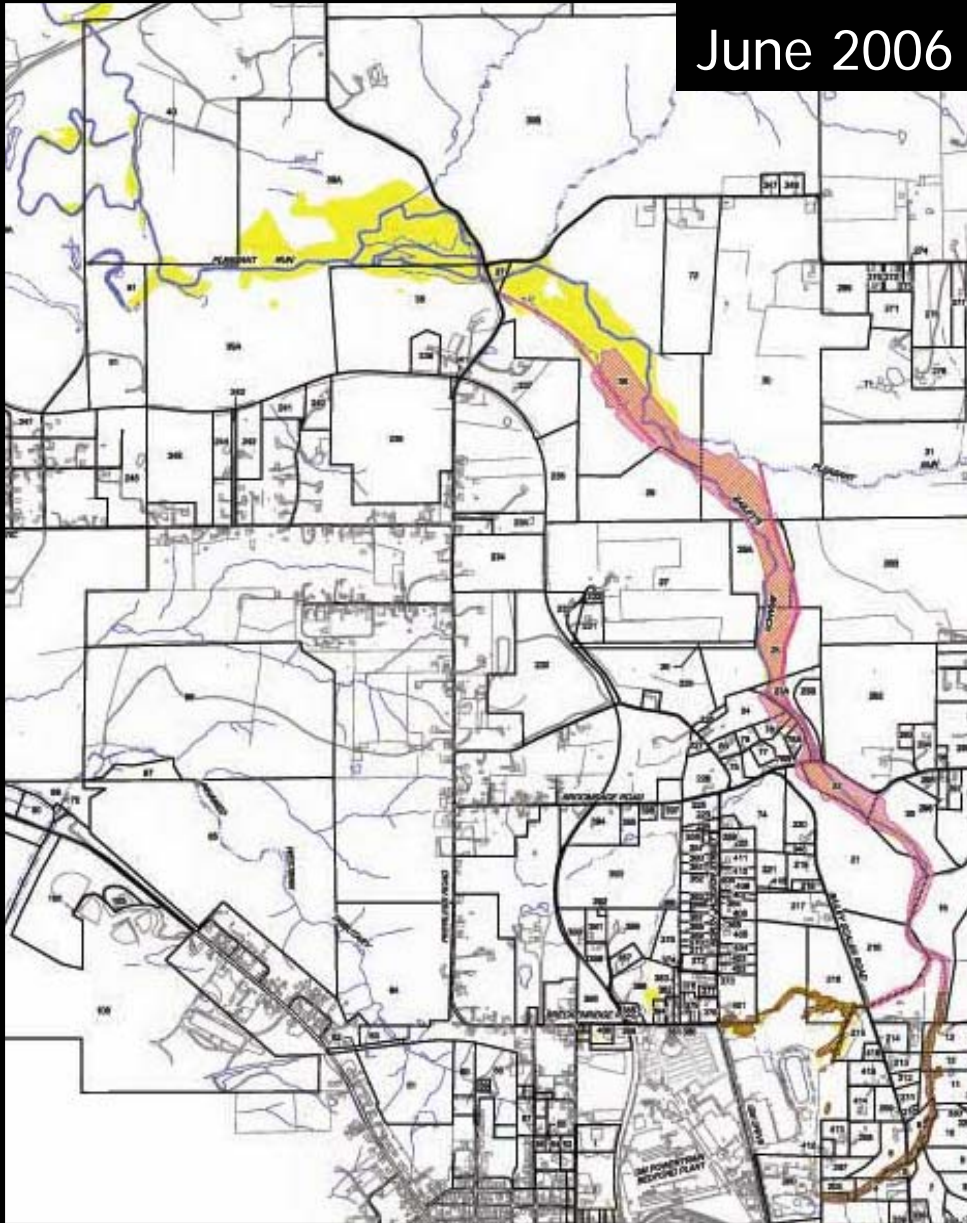


REMOVAL ACTION STATUS JUNE 2006 – JUNE 2007

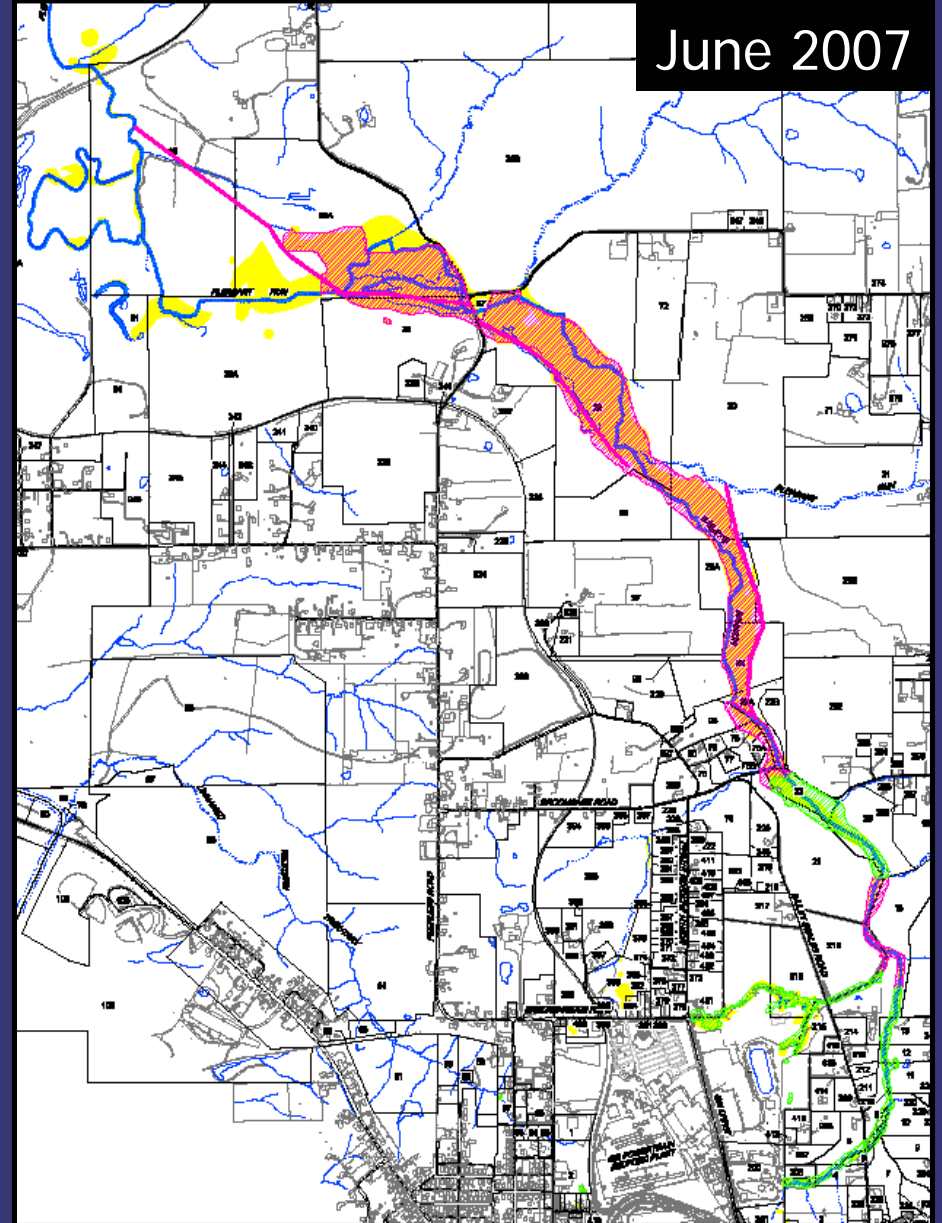
RCRA CORRECTIVE ACTION/CERCLA REMOVAL ACTION

GM POWERTRAIN BEDFORD PLANT, BEDFORD, INDIANA

June 2006



June 2007

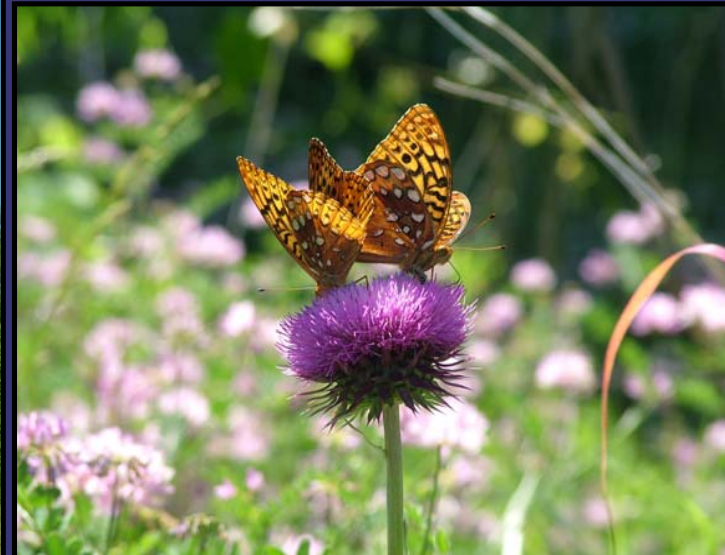




CREEK RESTORATION

RCRA CORRECTIVE ACTION/CERCLA REMOVAL ACTION

G M P O W E R T R A I N B E D F O R D P L A N T , B E D F O R D , I N D I A N A



Looking east and west from Bailey Scales Road



CREEK RESTORATION

RCRA CORRECTIVE ACTION/CERCLA REMOVAL ACTION

G M P O W E R T R A I N B E D F O R D P L A N T , B E D F O R D , I N D I A N A



Parcel 15 and 216
restoration east and
west of Bailey Scales
Road



CREEK RESTORATION



RCRA CORRECTIVE ACTION/CERCLA REMOVAL ACTION

GM POWERTRAIN BEDFORD PLANT, BEDFORD, INDIANA



Parcels 20 & 21 restoration



CREEK RESTORATION

RCRA CORRECTIVE ACTION/CERCLA REMOVAL ACTION

G M P O W E R T R A I N B E D F O R D P L A N T , B E D F O R D , I N D I A N A



North of Broomsage Road



CREEK RESTORATION

RCRA CORRECTIVE ACTION/CERCLA REMOVAL ACTION

GM POWERTRAIN BEDFORD PLANT, BEDFORD, INDIANA



Property south of
Broomsage Road restoration



Property south of Broomsage Road



CREEK RESTORATION

RCRA CORRECTIVE ACTION/CERCLA REMOVAL ACTION

GM POWERTRAIN BEDFORD PLANT, BEDFORD, INDIANA



Property north of Broomsage Road





CREEK EXCAVATION STATUS



RCRA CORRECTIVE ACTION/CERCLA REMOVAL ACTION

GM POWERTRAIN BEDFORD PLANT, BEDFORD, INDIANA





CREEK EXCAVATION

RCRA CORRECTIVE ACTION/CERCLA REMOVAL ACTION

GM POWERTRAIN BEDFORD PLANT, BEDFORD, INDIANA



Excavation east of Peerless Road



CREEK EXCAVATION



RCRA CORRECTIVE ACTION/CERCLA REMOVAL ACTION

GM POWERTRAIN BEDFORD PLANT, BEDFORD, INDIANA



Staging Area F



CREEK EXCAVATION



RCRA CORRECTIVE ACTION/CERCLA REMOVAL ACTION

G M P O W E R T R A I N B E D F O R D P L A N T , B E D F O R D , I N D I A N A



Staging Area G



CREEK EXCAVATION

RCRA CORRECTIVE ACTION/CERCLA REMOVAL ACTION

GM POWERTRAIN BEDFORD PLANT, BEDFORD, INDIANA



Excavation west of Peerless Road

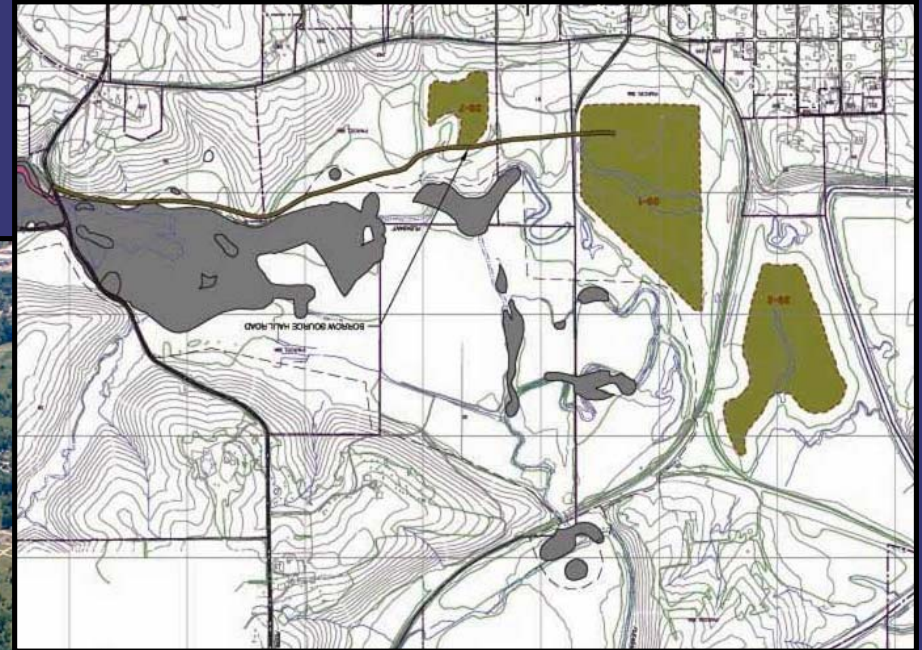


BORROW SOURCE AREA

RCRA CORRECTIVE ACTION/CERCLA REMOVAL ACTION

GM POWERTRAIN BEDFORD PLANT, BEDFORD, INDIANA

GM has created a borrow source for use in restoration



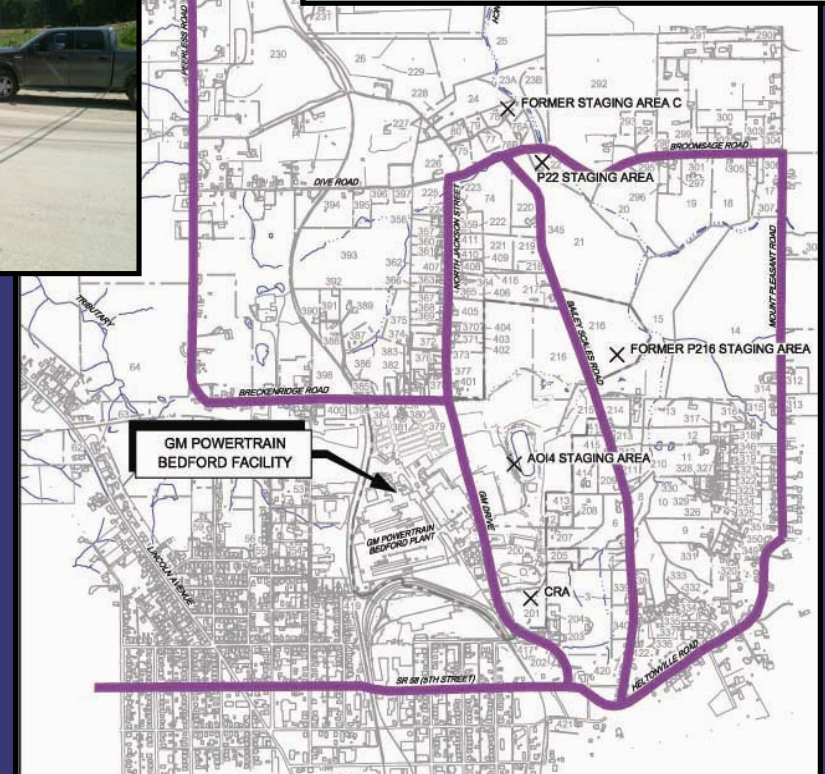


ROAD MAINTENANCE

RCRA CORRECTIVE ACTION/CERCLA REMOVAL ACTION

GM POWERTRAIN BEDFORD PLANT, BEDFORD, INDIANA

- A paving contractor is on retainer to maintain the roads, as needed. More difficult to perform repair in winter as asphalt plants are shut down.
- GM contacted local schools regarding school bus routes and hours.
- Contractors are informed of local traffic concerns, including school bus routes and hours.
- CRA is continually monitoring driver safety of truckers.
- Truck Traffic Issues:
Katie Kamm - (812) 279-0977





BAILEY SCALES ROAD PAVING

RCRA CORRECTIVE ACTION/CERCLA REMOVAL ACTION

G M P O W E R T R A I N B E D F O R D P L A N T , B E D F O R D , I N D I A N A





NORTH JACKSON SHOULDER REPAIR



RCRA CORRECTIVE ACTION/CERCLA REMOVAL ACTION

G M P O W E R T R A I N B E D F O R D P L A N T , B E D F O R D , I N D I A N A





SEEPS AND SPRINGS

RCRA CORRECTIVE ACTION/CERCLA REMOVAL ACTION

GM POWERTRAIN BEDFORD PLANT, BEDFORD, INDIANA

- Investigation at spring south of Broomsage Road is ongoing. Installation of coreholes nearly complete and dye-trace study to be initiated Summer 2007.
- Two monitoring events occurred: March 2007 Low-Flow Event and the April 2007 Low-Flow Event.
- Monitoring will continue to be conducted at least quarterly and low or high flow samples will be collected as conditions allow.





RCRA CORRECTIVE ACTION

RCRA CORRECTIVE ACTION / CERCLA REMOVAL ACTION

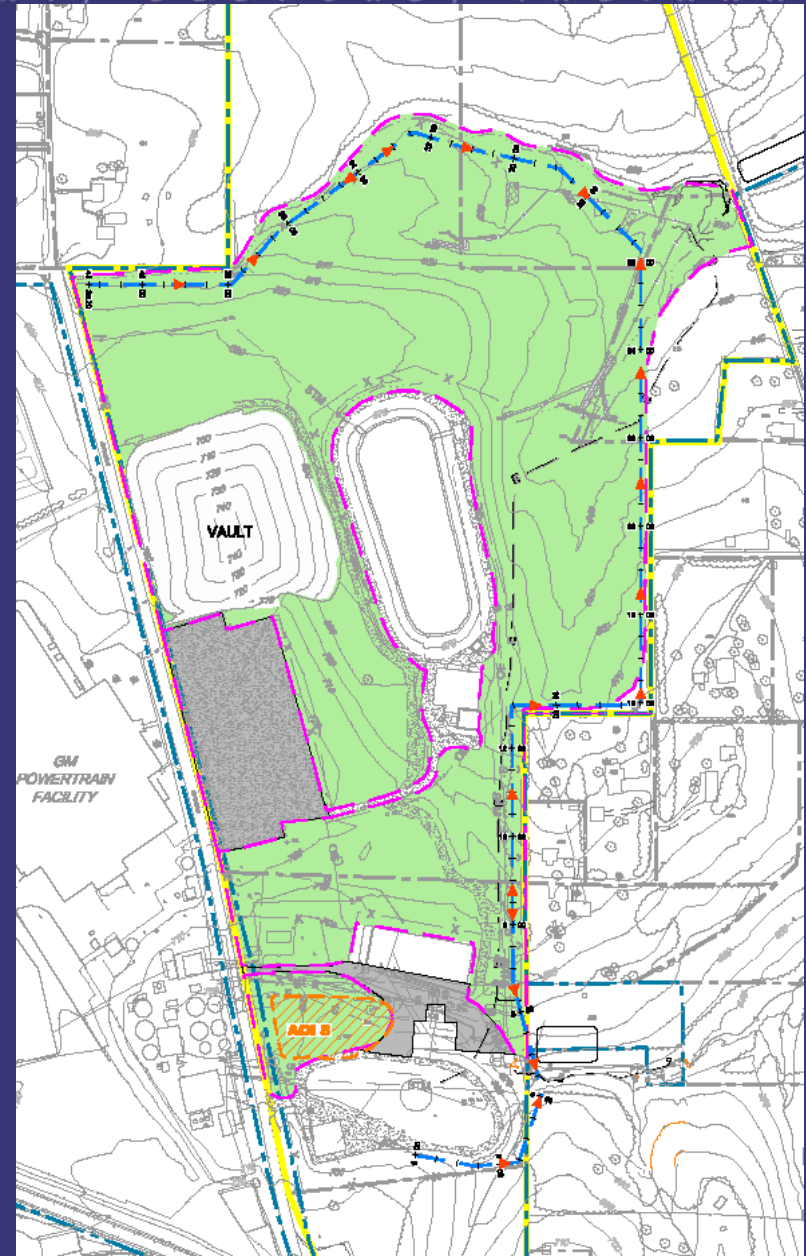
G M P O W E R T R A I N B E D F O R D P L A N T , B E D F O R D , I N D I A N A

- RCRA Corrective Action
 - Conducted under a performance-based agreement with the U.S. EPA Region V. The agreement was signed on March 20, 2001 and amended on October 1, 2002.
 - Continuing to perform soil and groundwater investigation
 - Installed new groundwater wells and completed new round of groundwater sampling
 - Dye investigation
 - Implementing Interim Measures
 - East Plant Area
 - Western Tributary largely completed in November 2006. A small, additional area to be completed in Summer 2007
 - Northern Tributary in Summer 2007
 - West Plant Area



East Plant Area Interim Measure

- Re-use of low PCB Removal Action soil
 - ongoing
- Select soil removal
 - >50 PPM removal
- >50 PPM Landfill Vault
 - Permanent cover to be placed Summer 2007
- Cover System
 - Contract awarded and grading is ongoing
- Perimeter Groundwater Collection System
 - Design being finalized
- AOI 8 Collection System
 - Pre-design testing to be conducted
- Long-term maintenance and monitoring
 - Following construction





EAST PLANT AREA

RCRA CORRECTIVE ACTION/CERCLA REMOVAL ACTION

GM POWERTRAIN BEDFORD PLANT, BEDFORD, INDIANA





UPCOMING RCRA ACTIVITIES

RCRA CORRECTIVE ACTION/CERCLA REMOVAL ACTION

GM POWERTRAIN BEDFORD PLANT, BEDFORD, INDIANA

UPCOMING ACTIVITIES 2007

- Additional Western Tributary clean-up
- Implement the Northern Tributary IM
- Implement West Plant Area IM
- Continue RFI groundwater monitoring
- Additional groundwater investigation as necessary





COMMUNITY RELATIONS ACTIVITIES

RCRA CORRECTIVE ACTION/CERCLA REMOVAL ACTION

G M P O W E R T R A I N B E D F O R D P L A N T , B E D F O R D , I N D I A N A

- Community meetings are held on a quarterly basis.
 - This set of meetings are June 6 and 7, 2007.
 - Presentations have been and will continue to be posted to the website.
 - The next community meetings are likely to be in September 2007.
 - CLP meeting will be held this Friday, June 8th.
 - People can always come to the field trailer and talk one-on-one.
- GM has scheduled a meeting with the Bedford City Council to discuss walking trails.
- GM held a meeting to road/traffic issues on May 21, 2007.



COMMUNITY RELATIONS ACTIVITIES

RCRA CORRECTIVE ACTION/CERCLA REMOVAL ACTION

G M P O W E R T R A I N B E D F O R D P L A N T , B E D F O R D , I N D I A N A

- Project website at:
<http://www.BedfordPowertrainCorrectiveAction.com>
- Quarterly Community Meetings now available on the website
- GM Community Relations Contact person is Becki Akers
The toll-free number remains (866) 223-0856
- Public Information Repository (GM Plant)
Currently by appointment
- Public Information Repository (Library)
- Community Liaison Panel (CLP)
- Periodic information sessions
- Periodic Project Fact Sheets (Sixteen issued to date)
- Truck Traffic Issues: Katie Kamm – (812) 279-0977