



GM POWERTRAIN BEDFORD FACILITY BEDFORD, INDIANA

RCRA CORRECTIVE ACTION/CERCLA REMOVAL ACTION

G M P O W E R T R A I N B E D F O R D P L A N T , B E D F O R D , I N D I A N A

Welcome to the September 2008 Public Information Session September 25, 2008



- Facility located on 152.5 acres and is approximately 1,000,000 square feet
- Approximately 1,000 employees



- Comprehensive Environmental Response, Compensation, and Liability Act (CERCLA) Removal Action (RA)
 - Bailey's Branch and Pleasant Run PCB cleanup of creek sediments and floodplain soil.
 - RA Elements:
 - Control of impacted springs and seeps along creeks;
 - Removal of floodplain soil to 1.8 ppm and sediment to 1 ppm in the creek.
 - On-Site and off-Site work is being consolidated to speed up progress.
 - Excavation of creek sediments and floodplain soil complete by the end of 2008.
 - Restoration of excavated areas continue into 2009.



RCRA CORRECTIVE ACTION / CERCLA REMOVAL ACTION

GM POWERTRAIN BEDFORD PLANT, BEDFORD, INDIANA

BORROW SOURCE AREA

EXCAVATION

**RESTORATION
NORTH OF
BROOMSAGE ROAD**

**NORTHERN
TRIBUTARY**

WEST PLANT AREA

EAST PLANT AREA

PARCEL 201





REMOVAL ACTION STATUS

RCRA CORRECTIVE ACTION/CERCLA REMOVAL ACTION

GM POWERTRAIN BEDFORD PLANT, BEDFORD, INDIANA

DIVERSION
CHANNEL NO. 3

BORROW SOURCE
AREA AND HAUL
ROAD

NEW RESTORATION
BETWEEN
BROOMSAGE ROAD
AND PEERLESS
ROAD

NORTHERN
TRIBUTARY

EAST PLANT AREA
VAULT

PARCEL 201

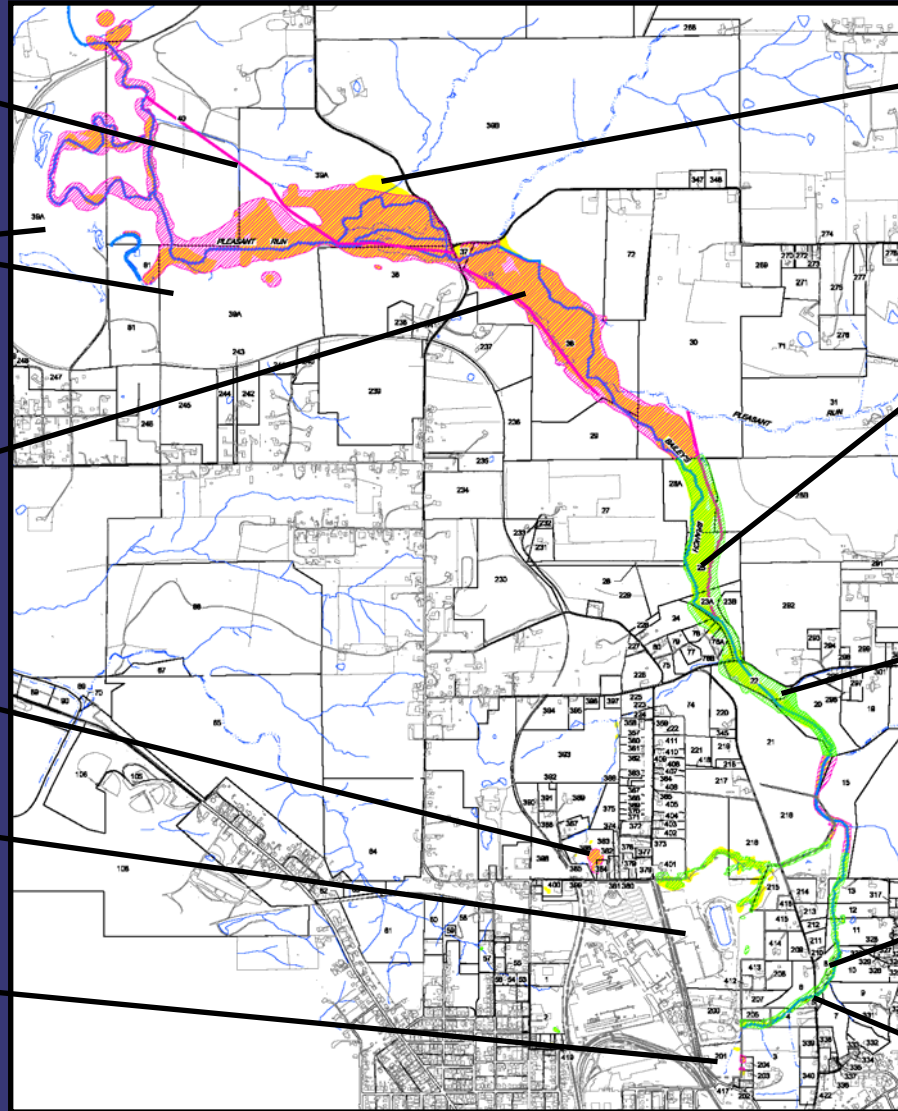
STAGING AREA

RESTORATION
NORTH OF
BROOMSAGE ROAD

RESTORATION
SOUTH OF
BROOMSAGE ROAD

RESTORATION
EAST OF BAILEY
SCALES ROAD

RESTORATION
WEST OF BAILEY
SCALES ROAD





CREEK RESTORATION

RCRA CORRECTIVE ACTION/CERCLA REMOVAL ACTION

G M P O W E R T R A I N B E D F O R D P L A N T , B E D F O R D , I N D I A N A



Looking west and east from Bailey Scales Road



CREEK RESTORATION

RCRA CORRECTIVE ACTION / CERCLA REMOVAL ACTION

G M P O W E R T R A I N B E D F O R D P L A N T , B E D F O R D , I N D I A N A



Looking north and south of Broomsage Road restoration



CREEK RESTORATION

RCRA CORRECTIVE ACTION / CERCLA REMOVAL ACTION

G M P O W E R T R A I N B E D F O R D P L A N T , B E D F O R D , I N D I A N A



Restoration North of Broomsage Road



CREEK RESTORATION

RCRA CORRECTIVE ACTION/CERCLA REMOVAL ACTION

GM POWERTRAIN BEDFORD PLANT, BEDFORD, INDIANA





CREEK RESTORATION

RCRA CORRECTIVE ACTION / CERCLA REMOVAL ACTION

G M P O W E R T R A I N B E D F O R D P L A N T , B E D F O R D , I N D I A N A





CREEK RESTORATION STATUS

RCRA CORRECTIVE ACTION / CERCLA REMOVAL ACTION

G M P O W E R T R A I N B E D F O R D P L A N T , B E D F O R D , I N D I A N A





CREEK RESTORATION STATUS

RCRA CORRECTIVE ACTION/CERCLA REMOVAL ACTION

G M P O W E R T R A I N B E D F O R D P L A N T , B E D F O R D , I N D I A N A



Restoration east of Peerless Road



CREEK RESTORATION STATUS

RCRA CORRECTIVE ACTION/CERCLA REMOVAL ACTION

G M P O W E R T R A I N B E D F O R D P L A N T , B E D F O R D , I N D I A N A





CREEK EXCAVATION STATUS

RCRA CORRECTIVE ACTION/CERCLA REMOVAL ACTION

GM POWERTRAIN BEDFORD PLANT, BEDFORD, INDIANA



Excavation west of Peerless Road



BORROW SOURCE AREA

RCRA CORRECTIVE ACTION/CERCLA REMOVAL ACTION

GM POWERTRAIN BEDFORD PLANT, BEDFORD, INDIANA



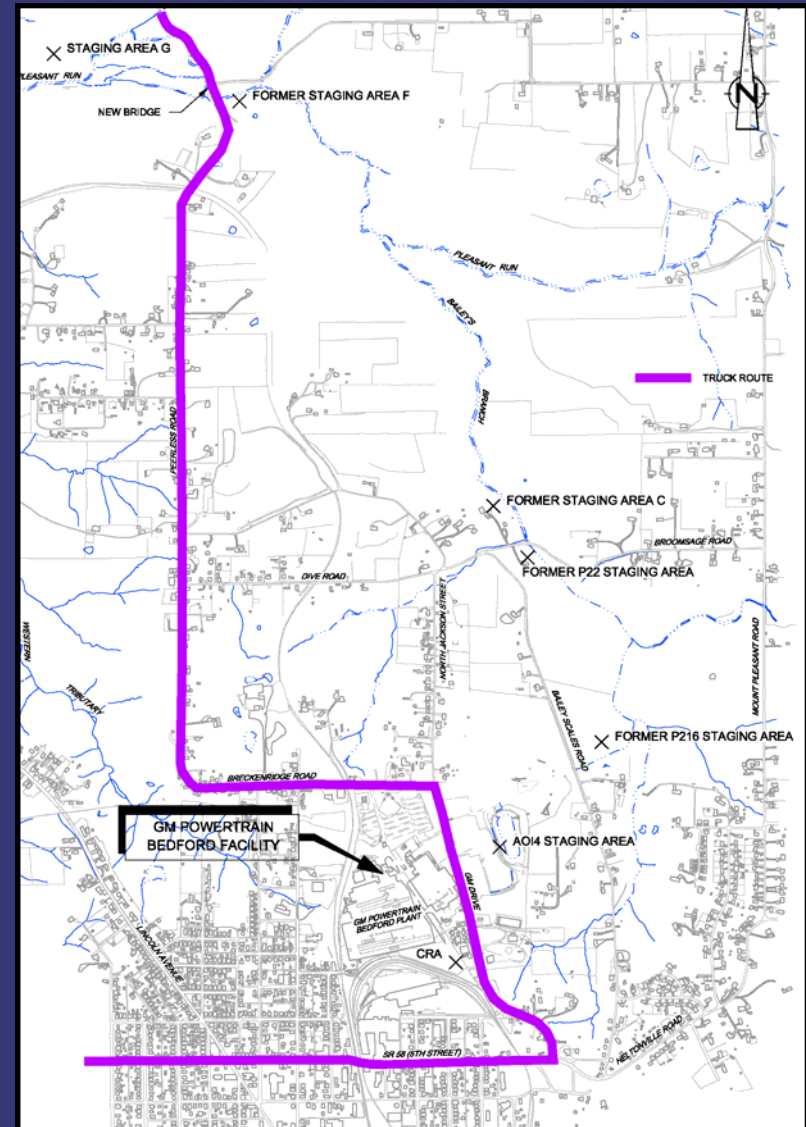


TRUCK TRAFFIC ROUTES

RCRA CORRECTIVE ACTION/CERCLA REMOVAL ACTION

GM POWERTRAIN BEDFORD PLANT, BEDFORD, INDIANA

- Regular truck traffic to move the soils will continue through the fall months.
- There is increased road traffic now, which will continue through the end of the year.
- There will be a break in trucking over the winter. Trucking will resume in Spring 2009.
- GM will be patching/paving roads as needed and as weather permits.
- CRA is continually monitoring driver safety of truckers.
- At the end of truck traffic, GM will be resurfacing the last stretches of road used by the project, where paving is in poor condition.
- Truck Traffic Issues:
Katie Kamm - (812) 279-0977





SEEPS AND SPRINGS

RCRA CORRECTIVE ACTION/CERCLA REMOVAL ACTION

GM POWERTRAIN BEDFORD PLANT, BEDFORD, INDIANA

- A report reviewing remedial alternatives for this spring is being prepared for submission to U.S. EPA.
- Monitoring continues to be conducted at least quarterly.

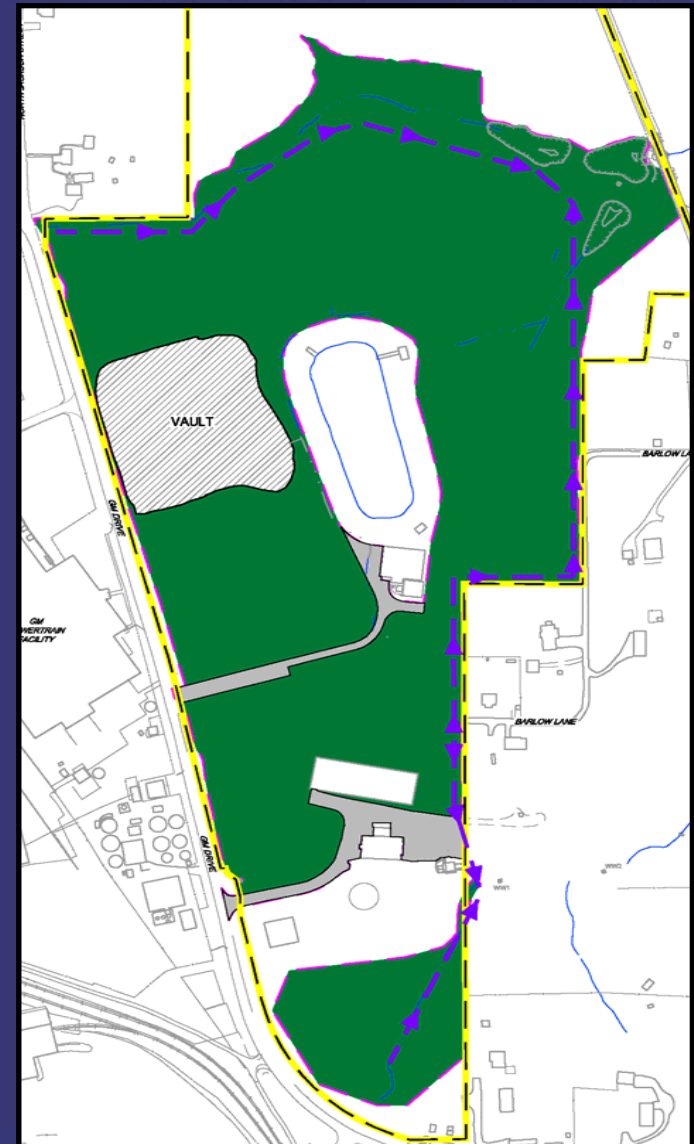




- RCRA Corrective Action
 - Conducted under a performance-based agreement with the U.S. EPA Region V. The agreement was signed on March 20, 2001 and amended October 1, 2002, and February 28, 2007.
 - Continuing to perform soil and groundwater investigation
 - Implementing Interim Measures
 - East Plant Area
 - West Plant Area

East Plant Area Interim Measure

- Re-use of low PCB Removal Action soil
 - ongoing
- Select soil removal
 - >50 PPM removal complete in the East Plant Area and placed into the Vault
- >50 PPM Landfill Vault
 - Permanent cover still to be placed
 - Vault cap will be completed following placement of soil from the West Plant Area excavation
- Cover System
 - Grading, clay and liner placement is ongoing
- Perimeter Groundwater Collection System
 - Design being finalized
 - Interim groundwater collection ongoing
- AOI 8 Collection System
 - Interim recovery system to be installed
 - Design to be finalized
- Long-term maintenance and monitoring
 - Following construction





EAST PLANT AREA

RCRA CORRECTIVE ACTION / CERCLA REMOVAL ACTION

GM POWERTRAIN BEDFORD PLANT, BEDFORD, INDIANA





WEST PLANT AREA

RCRA CORRECTIVE ACTION/CERCLA REMOVAL ACTION

GM POWERTRAIN BEDFORD PLANT, BEDFORD, INDIANA

- Corner sewer work completed in Summer 2008.





WEST PLANT AREA

RCRA CORRECTIVE ACTION/CERCLA REMOVAL ACTION

G M P O W E R T R A I N B E D F O R D P L A N T , B E D F O R D , I N D I A N A

- Excavation in front of plant commenced in August 2008 and is expected to be complete before the end of 2008.





NORTHERN TRIBUTARY

RCRA CORRECTIVE ACTION/CERCLA REMOVAL ACTION

GM POWERTRAIN BEDFORD PLANT, BEDFORD, INDIANA





UPCOMING RCRA ACTIVITIES

RCRA CORRECTIVE ACTION/CERCLA REMOVAL ACTION

G M P O W E R T R A I N B E D F O R D P L A N T , B E D F O R D , I N D I A N A

UPCOMING ACTIVITIES 2008

- Complete West Plant Area excavation in AOI 21-2
- Complete transfer of soil from creek areas to East Plant Area
- Cover the East Plant Area with a clean clay layer prior to the end of 2008
- Complete the Vault cover
- Complete final design for the perimeter collection trench pilot study
- Complete restoration in the main creek between the confluence of Bailey's Branch and Pleasant Run and the Peerless Road Bridge
- Continue RFI groundwater monitoring



COMMUNITY RELATIONS ACTIVITIES

RCRA CORRECTIVE ACTION/CERCLA REMOVAL ACTION

G M P O W E R T R A I N B E D F O R D P L A N T , B E D F O R D , I N D I A N A

- Community meetings are held on a quarterly basis.
 - Presentations have been and will continue to be posted to the website.
 - People can always come to the field trailer and talk one-on-one.
- Next meetings will be held in December 2008



COMMUNITY RELATIONS ACTIVITIES

RCRA CORRECTIVE ACTION/CERCLA REMOVAL ACTION

G M P O W E R T R A I N B E D F O R D P L A N T , B E D F O R D , I N D I A N A

- Project website at:
<http://www.BedfordPowertrainCorrectiveAction.com>
- Quarterly Community Meetings are available on the website
- GM Community Relations Contact person is Pam Reese.
The communications number has been changed to (812) 583-3753
- Public Information Repository (GM Plant) Currently by appointment with Pam
- Community Liaison Panel (CLP)
- Periodic information sessions
- Periodic Project Fact Sheets (twenty-one issued to date)
- Truck Traffic Issues: Katie Kamm – (812) 279-0977