



# BEDFORD PLANT CORRECTIVE ACTION

G M G P S B E D F O R D F A C I L I T Y , B E D F O R D , I N D I A N A

## Public Information Session December 6, 2018



- Facility located on 152.5 acres and is approximately 1,000,000 square feet of manufacturing footprint
- Approximately 830 employees

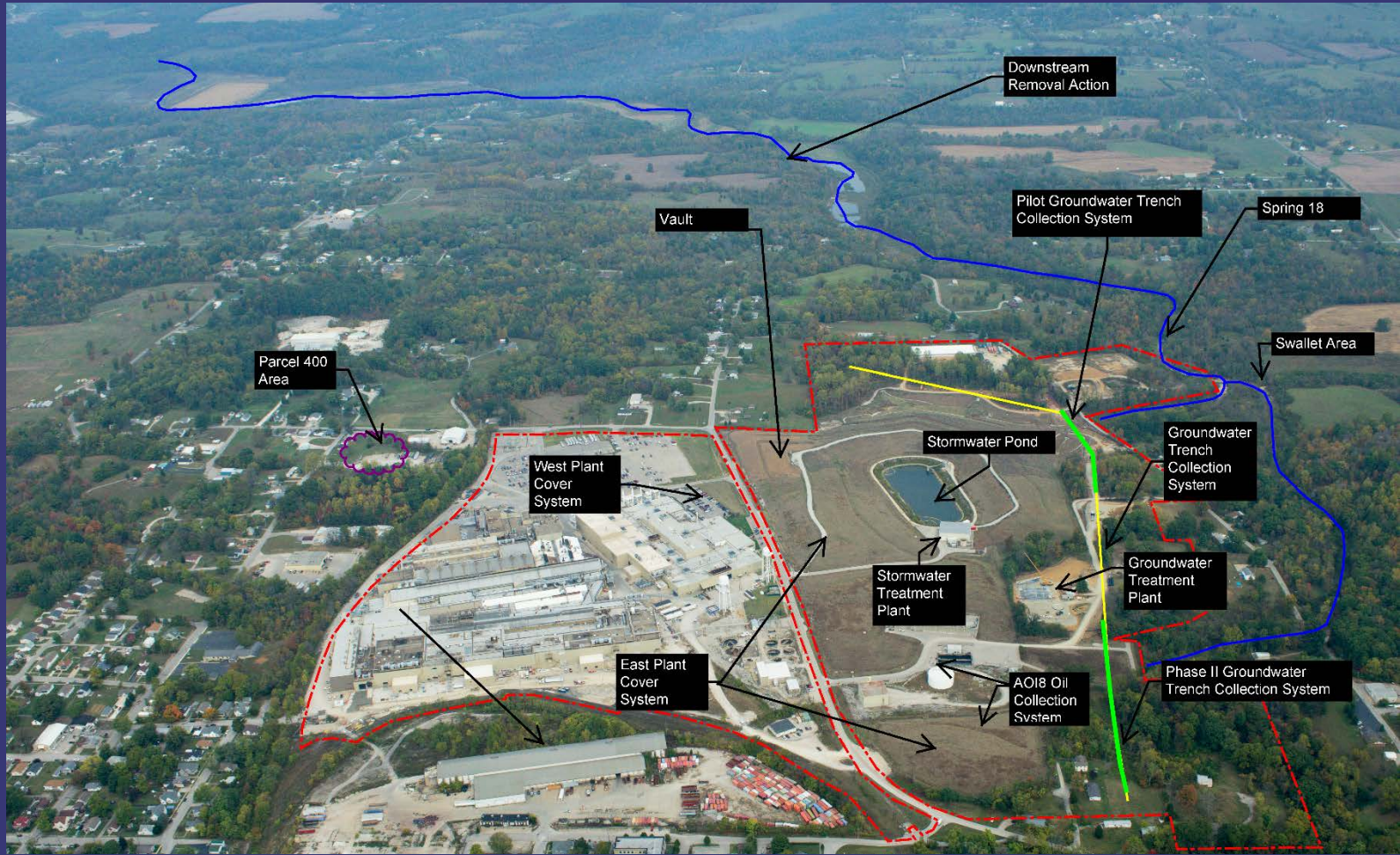


- Comprehensive Environmental Response, Compensation, and Liability Act (CERCLA) Removal Action (RA)
  - Bailey's Branch and Pleasant Run PCB cleanup of creek sediments and floodplain soil
  - RA Elements:
    - Control of impacted springs and seeps along creek
    - Removal of floodplain soil to 1.8 ppm and sediment to 1 ppm in the creek (removal is complete)
  - Monitoring continues for large spring on Baileys Branch Creek
  - Creek and floodplain restoration was completed in August 2014
- RCRA Corrective Action
  - GM LLC and USEPA entered into an AOC for those areas which GM LLC is responsible.



# GM BEDFORD REMEDIATION PROJECT

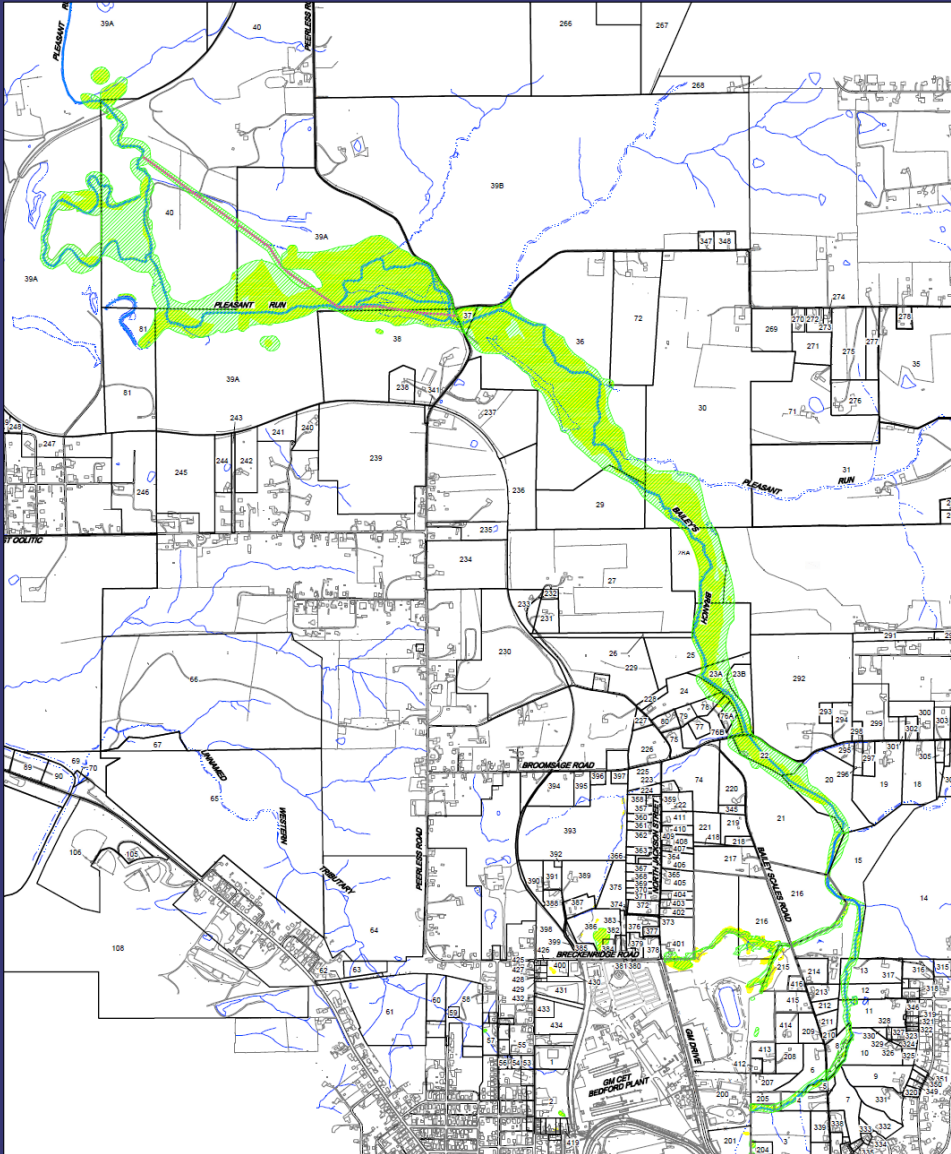
G M G P S B E D F O R D F A C I L I T Y , B E D F O R D , I N D I A N A





# REMOVAL ACTION STATUS

G M G P S B E D F O R D F A C I L I T Y , B E D F O R D , I N D I A N A





# CREEK RESTORATION

G M G P S B E D F O R D F A C I L I T Y , B E D F O R D , I N D I A N A





# CREEK RESTORATION

G M G P S B E D F O R D F A C I L I T Y , B E D F O R D , I N D I A N A

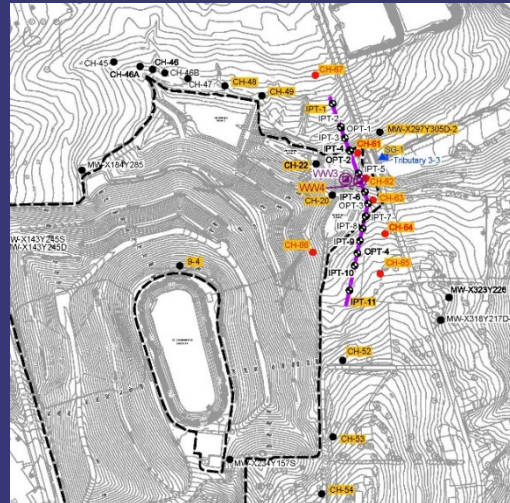




# ON-SITE PILOT TRENCH MONITORING

G M G P S B E D F O R D F A C I L I T Y , B E D F O R D , I N D I A N A

- On-Site pilot perimeter groundwater trench collection system construction was completed in August 2016 and has been operating since that time.
- Additional monitoring wells will be installed and monitored to augment current monitoring network to monitor the groundwater flow pattern.
- A thermal study will determine the location of seeps and springs which will then be monitored.
- A dye trace study will be conducted to show the groundwater pathway.



- Installation of the fence along GM Drive was completed in January 2018.
- Installation of the fence along the south side of the property was completed in October 2018.
- Balance of the fence installation expected to be completed in 2019.







# COVER SYSTEM MONITORING AND MAINTENANCE

G M G P S B E D F O R D F A C I L I T Y , B E D F O R D , I N D I A N A

- Formal inspections are conducted semi-annually.
- Cover system repairs are made, as needed.
- Remediation continues to support GM Bedford GPS Wildlife Habitat Council re-certification.



- GWTP treats groundwater from the perimeter trench, site source control wet wells, and vault sumps.
- Treated water discharges are monitored through a NPDES permit managed by GM Remediation.

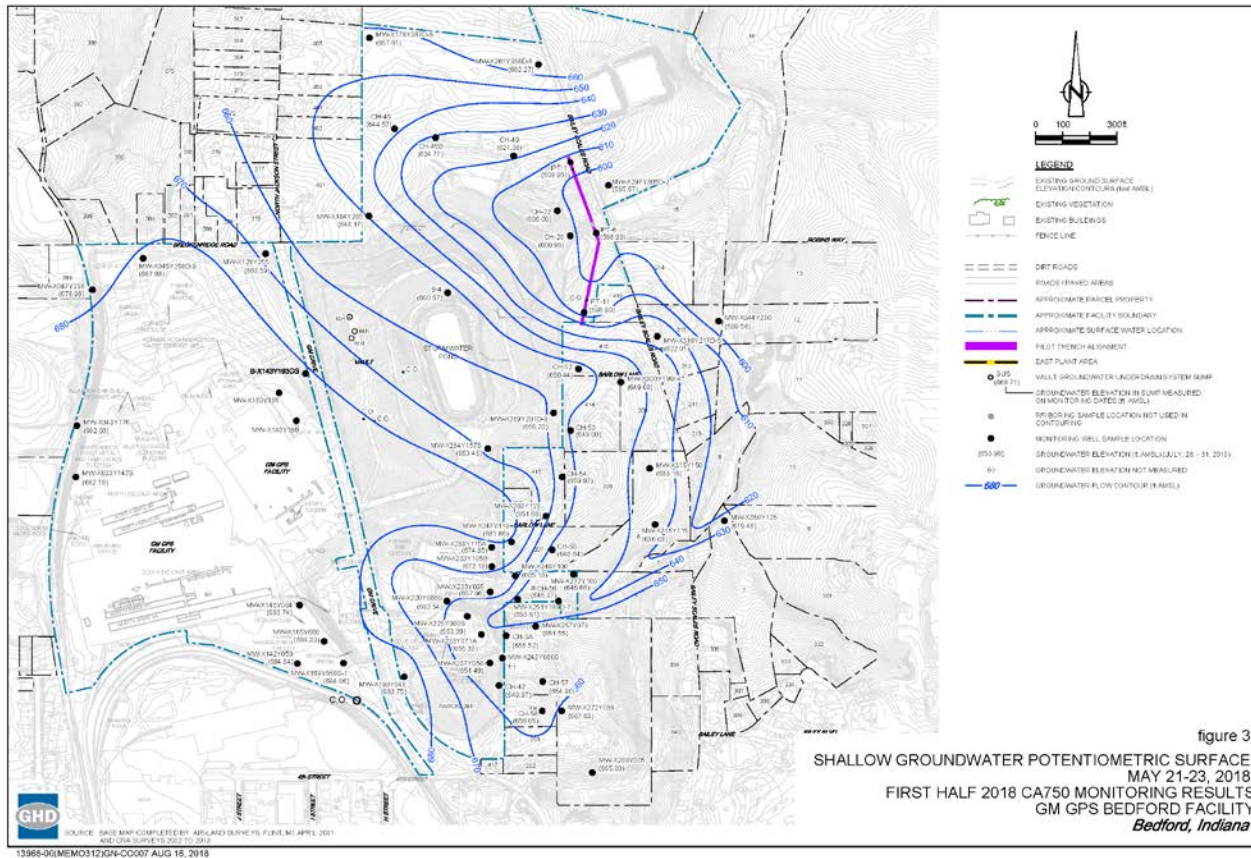




# EI CA750 GROUNDWATER MONITORING

G M G P S B E D F O R D F A C I L I T Y , B E D F O R D , I N D I A N A

- Quarterly groundwater level measurements collected.
- Groundwater sampling event conducted in May and November 2018.



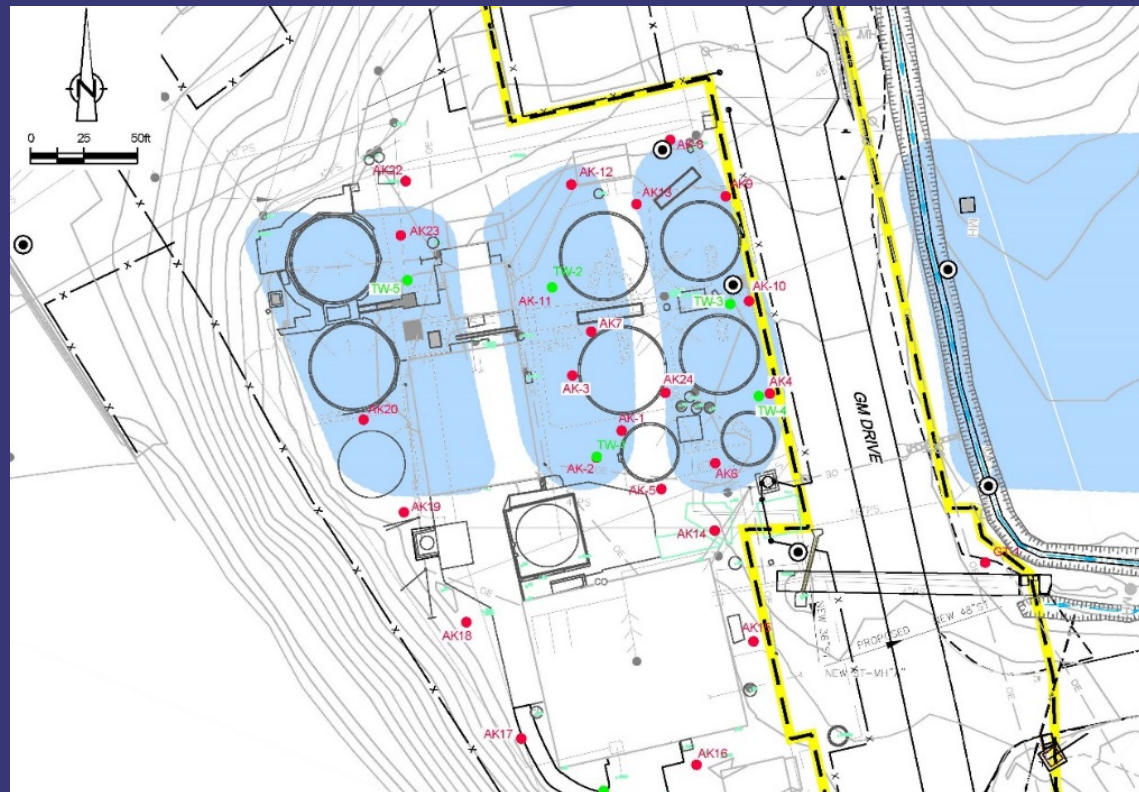
- Active system uses solar power to collect oil and pump it to an above ground container housed in an adjacent building.
- Passive oil recovery adsorbent socks are used where active oil recovery is infeasible.
- Oil collection began in October 2018.
- Disposal is managed by facility personnel.
- Re-designing access road to the solar sipper building to improve safety.



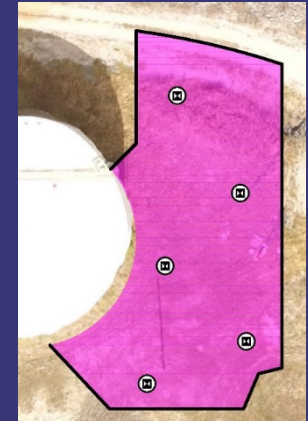
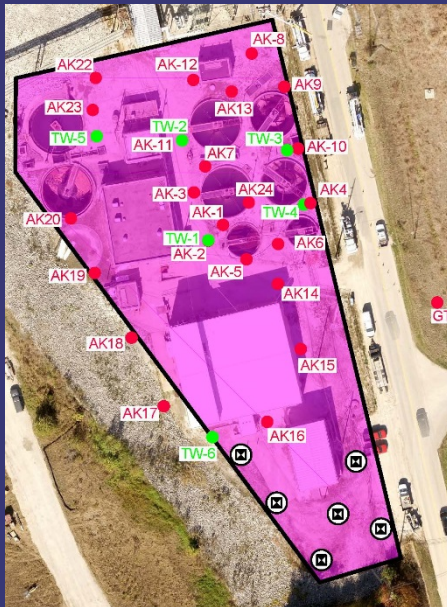
- GM continues to collect samples from Spring 18 and analyze for PCBs.
- Two years of monthly (2017)/quarterly (2018) sample data shows no detectable PCB concentrations (reporting limit – 0.19 ug/L; Spring 18 action level - 0.3 ug/L).
- Semi-annual sampling of the Spring will done in 2019.



- Additional wells are proposed to support an assessment of potential current and future risks to human health and the environment.
- Work to be initiated following IWTP upgrades to minimize safety risks having multiple contractors working in a tight area.



- Initial sampling targeted areas, not covered by East/West Plant Cover System, not currently paved with hard surface maintained by GM GPS.
- Additional sampling to be done in the two pink-shaded areas.
- Work to be initiated following IWTP upgrades to minimize safety risks having multiple contractors working in a tight area. Work to be done in conjunction with clarifier area well installation.





- Community meetings have been held on a regular basis, currently meeting twice/year .
  - Meetings will continue to be announced in the Bedford Times Mail.
  - Presentations have been and will continue to be posted to the website and the library.
  - People can call Katie Kamm with questions:  
(812) 277-8954.
  - GHD trailers will be demobilized in 2019. The location for the next community meeting will be provided with the meeting invitation.
- The last public meeting was held in July 2018.
- The Community Liaison Panel and public meetings have been combined as project activities are winding down or transitioning into operation of water collection and treatment, and monitoring and maintenance of remedial systems.
- Information from the presentations are posted to the website.





G M G P S B E D F O R D F A C I L I T Y , B E D F O R D , I N D I A N A

- Project website at:  
<http://www.BedfordPowertrainCorrectiveAction.com>
- Community Meetings are available on the website
- Final approved documents can be found on the project website
- Periodic information sessions – next meeting likely to be held June 2019.
- Periodic Project Fact Sheets
- Project Questions contact Katie Kamm: (812) 277-8954