



GM POWERTRAIN BEDFORD FACILITY BEDFORD, INDIANA

RCRA CORRECTIVE ACTION/CERCLA REMOVAL ACTION

GM POWERTRAIN BEDFORD PLANT, BEDFORD, INDIANA

Welcome to the June 2009 Public Information Session June 17, 18, and 19 2009



- Facility located on 152.5 acres and is approximately 1,000,000 square feet of manufacturing footprint
- Approximately 500 employees



- GM filed for bankruptcy on June 1, 2009 under Chapter 11 of the US Bankruptcy Code
- Under Section 363 of Chapter 11, GM intends to sell a substantial portion of its assets to a new GM company – called a “363 sale”
- The Bedford Plant will be part of the new GM company and will continue to operate
- GM intends to continue the Bedford remediation project
- More information on the filings can be found at the GM website www.gmcourtdocs.com

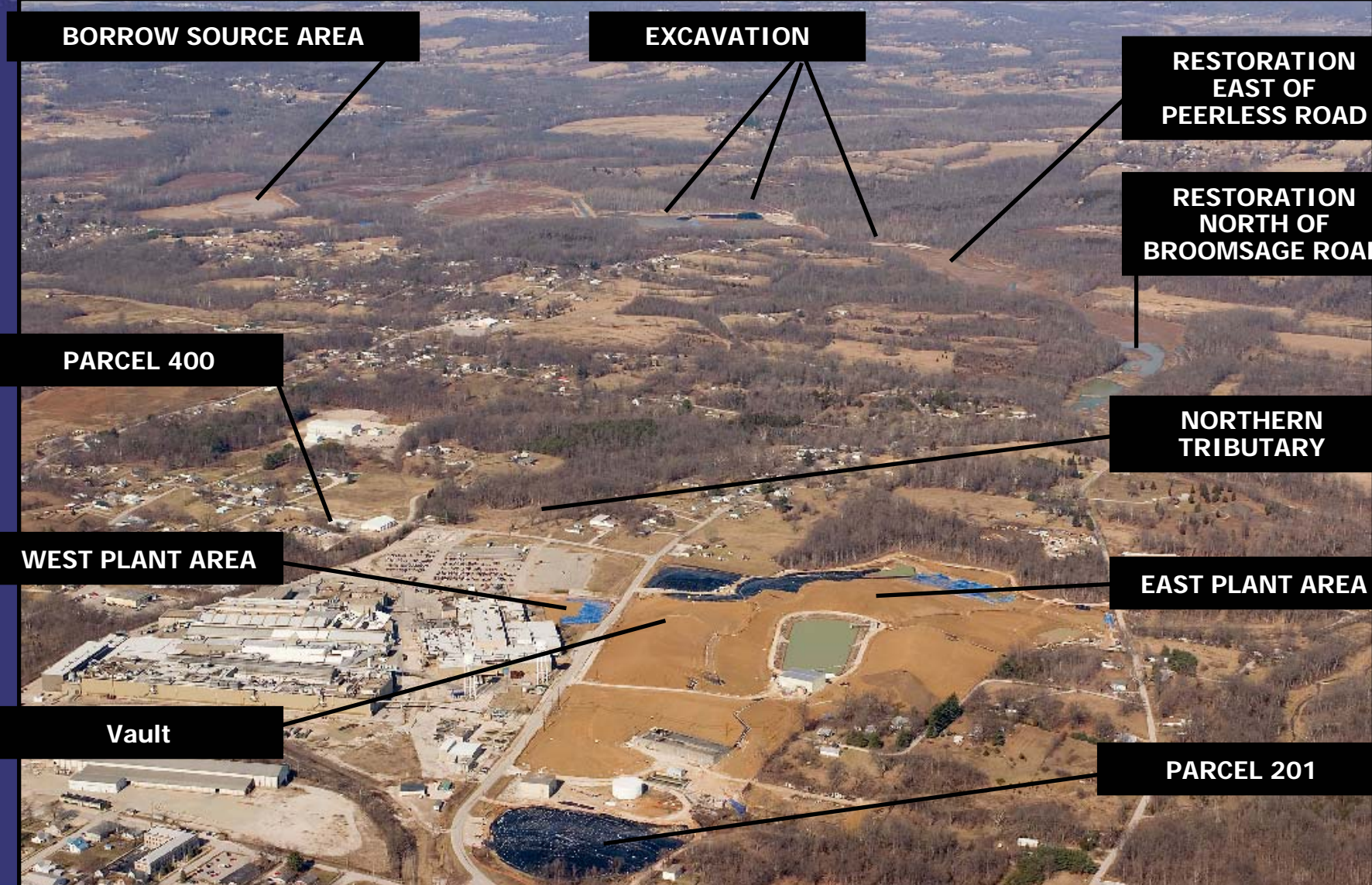


- Comprehensive Environmental Response, Compensation, and Liability Act (CERCLA) Removal Action (RA)
 - Bailey's Branch and Pleasant Run PCB cleanup of creek sediments and floodplain soil.
 - RA Elements:
 - Control of impacted springs and seeps along creeks; and
 - Removal of floodplain soil to 1.8 ppm and sediment to 1 ppm in the creek.
 - On-Site and off-Site work is being consolidated to speed up progress.
 - Excavation of creek sediments and floodplain soil complete in Summer 2009.
 - Restoration of excavated areas continue into 2010.



RCRA CORRECTIVE ACTION / CERCLA REMOVAL ACTION

GM POWERTRAIN REDFORD PLANT REDFORD INDIANA



BORROW SOURCE AREA

EXCAVATION

**RESTORATION
EAST OF
PEERLESS ROAD**

**RESTORATION
NORTH OF
BROOMSAGE ROAD**

PARCEL 400

**NORTHERN
TRIBUTARY**

WEST PLANT AREA

EAST PLANT AREA

Vault

PARCEL 201



REMOVAL ACTION STATUS

RCRA CORRECTIVE ACTION/CERCLA REMOVAL ACTION

GM POWERTRAIN BEDFORD PLANT, BEDFORD, INDIANA

DIVERSION
CHANNEL NO. 3

BORROW SOURCE
AREA AND HAUL
ROAD

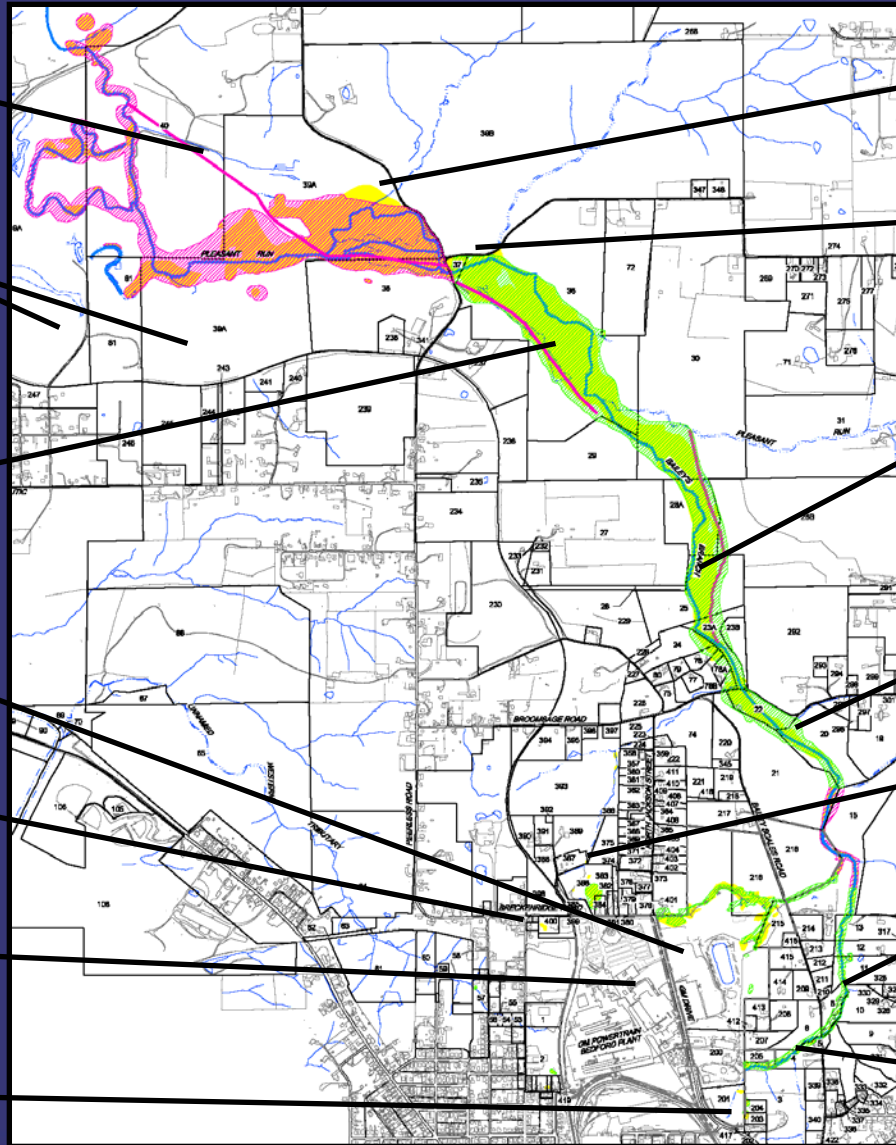
NEW RESTORATION
BETWEEN
BROOMSAGE ROAD
AND PEERLESS
ROAD

EAST PLANT AREA
VAULT

PARCEL 400

WEST PLANT AREA

PARCEL 201



STAGING AREA

DOWNSTREAM
WATER
TREATMENT

RESTORATION
NORTH OF
BROOMSAGE ROAD

RESTORATION
SOUTH OF
BROOMSAGE ROAD

NORTHERN
TRIBUTARY

RESTORATION
EAST OF BAILEY
SCALES ROAD

RESTORATION
WEST OF BAILEY
SCALES ROAD



CREEK RESTORATION

RCRA CORRECTIVE ACTION/CERCLA REMOVAL ACTION

G M P O W E R T R A I N B E D F O R D P L A N T , B E D F O R D , I N D I A N A



Looking west and east from Bailey Scales Road



CREEK RESTORATION

RCRA CORRECTIVE ACTION/CERCLA REMOVAL ACTION

G M P O W E R T R A I N B E D F O R D P L A N T , B E D F O R D , I N D I A N A





CREEK RESTORATION

RCRA CORRECTIVE ACTION/CERCLA REMOVAL ACTION

G M P O W E R T R A I N B E D F O R D P L A N T , B E D F O R D , I N D I A N A



Looking north of Broomsage Road restoration



CREEK RESTORATION

RCRA CORRECTIVE ACTION/CERCLA REMOVAL ACTION

G M P O W E R T R A I N B E D F O R D P L A N T , B E D F O R D , I N D I A N A



Looking south of Broomsage Road restoration



CREEK RESTORATION

RCRA CORRECTIVE ACTION/CERCLA REMOVAL ACTION

GM POWERTRAIN BEDFORD PLANT, BEDFORD, INDIANA



Restoration North of Broomsage Road



CREEK RESTORATION STATUS

RCRA CORRECTIVE ACTION/CERCLA REMOVAL ACTION

GM POWERTRAIN BEDFORD PLANT, BEDFORD, INDIANA



Restoration east of Peerless Road



CREEK RESTORATION

RCRA CORRECTIVE ACTION / CERCLA REMOVAL ACTION

G M P O W E R T R A I N B E D F O R D P L A N T , B E D F O R D , I N D I A N A



Restoration east of Peerless Road



CREEK EXCAVATION STATUS

RCRA CORRECTIVE ACTION/CERCLA REMOVAL ACTION

GM POWERTRAIN BEDFORD PLANT, BEDFORD, INDIANA



Excavation west of Peerless Road



BORROW AREA

RCRA CORRECTIVE ACTION / CERCLA REMOVAL ACTION

G M P O W E R T R A I N B E D F O R D P L A N T , B E D F O R D , I N D I A N A



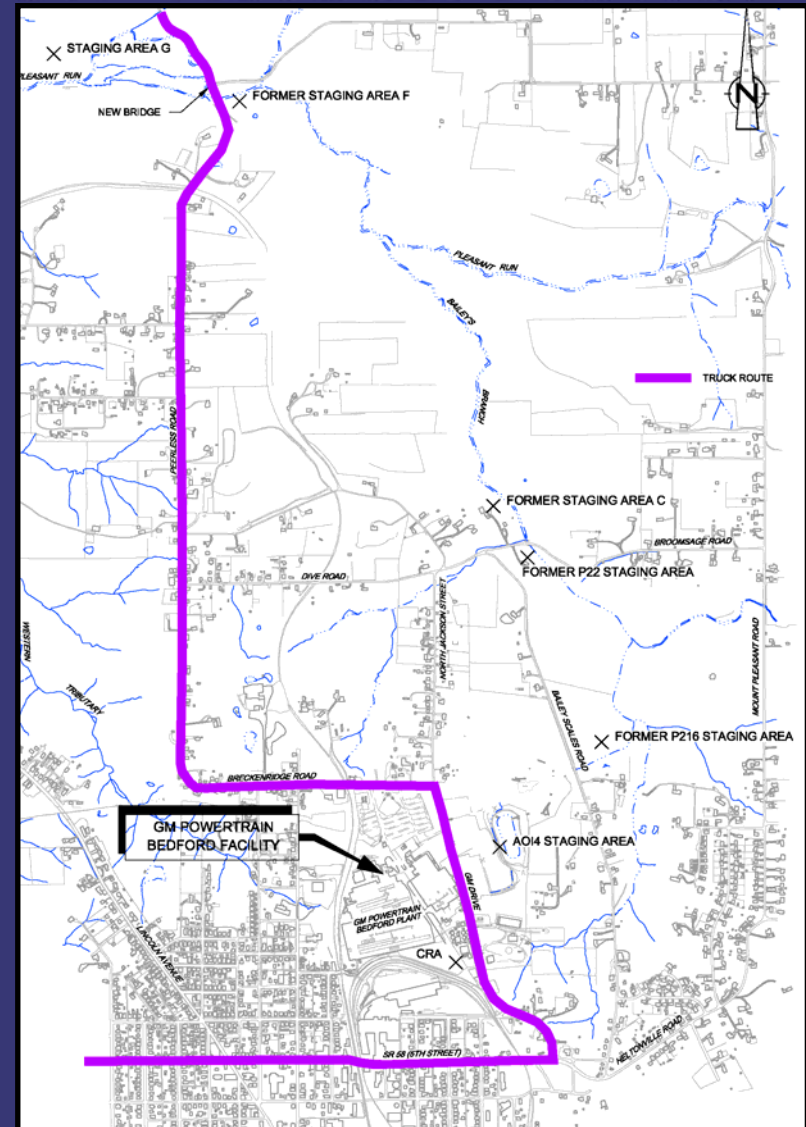


TRUCK TRAFFIC ROUTES

RCRA CORRECTIVE ACTION/CERCLA REMOVAL ACTION

GM POWERTRAIN BEDFORD PLANT, BEDFORD, INDIANA

- There will be increased road traffic when trucking resumes, later this year.
- Trucking on a full time basis will resume after selection of a new contractor.
- GM will be patching/paving roads as needed and as weather permits.
- CRA is continually monitoring safety of truckers.
- At the end of truck traffic, GM will be resurfacing/repairing the last stretches of road used by the project, where needed.
- Truck Traffic Issues:
Katie Kamm - (812) 279-0977

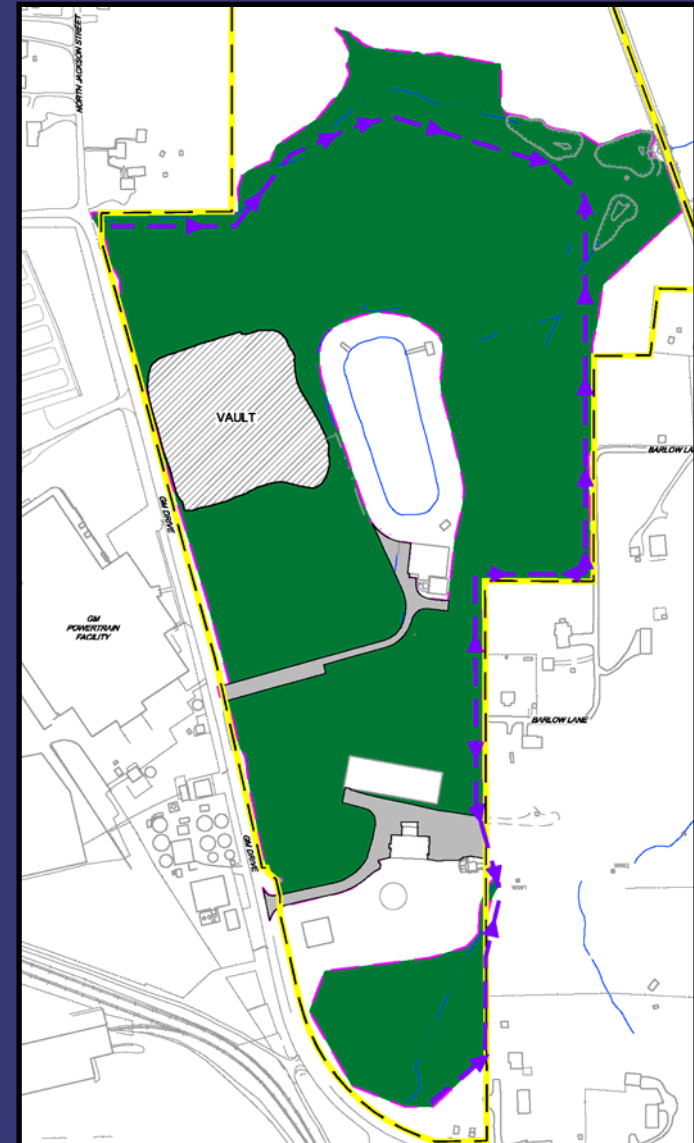




- RCRA Corrective Action
 - Conducted under a performance-based agreement with the U.S. EPA Region V. The agreement was signed on March 20, 2001 and amended October 1, 2002, March 29, 2008, and May 9, 2008
 - Continuing to perform groundwater testing
 - Implementing Interim Measures
 - East Plant Area
 - West Plant Area

East Plant Area Interim Measure

- Re-use of low PCB Removal Action soil
 - ongoing
- Select soil removal
 - >50 PPM removal complete in the East Plant Area and placed into the Vault
- >50 PPM Landfill Vault
 - Filling of the Vault is complete and Vault cover is almost complete
 - Temporary cover protecting north section and will be replaced with permanent liner
- Cover System
 - Soil placement/hauling will resume in 2009
 - Some areas still need creek soil as subgrade
 - Some areas need one or more of the cover layers
 - Any area not already covered by permanent liner currently has a temporary liner
- Perimeter Groundwater Collection System
 - Interim groundwater collection ongoing
- AOI 8 Collection System
 - More testing upcoming and the design to be finalized
- Long-term maintenance and monitoring
 - Following construction





EAST PLANT AREA

RCRA CORRECTIVE ACTION/CERCLA REMOVAL ACTION

GM POWERTRAIN BEDFORD PLANT, BEDFORD, INDIANA





WEST PLANT AREA

RCRA CORRECTIVE ACTION/CERCLA REMOVAL ACTION

G M P O W E R T R A I N B E D F O R D P L A N T , B E D F O R D , I N D I A N A

- The former excavation in front of the plant will have a permanent vegetative and asphalt cover placed over top, to be installed this summer.





PARCEL 400

RCRA CORRECTIVE ACTION/CERCLA REMOVAL ACTION

G M P O W E R T R A I N B E D F O R D P L A N T , B E D F O R D , I N D I A N A





UPCOMING RCRA ACTIVITIES

RCRA CORRECTIVE ACTION/CERCLA REMOVAL ACTION

G M P O W E R T R A I N B E D F O R D P L A N T , B E D F O R D , I N D I A N A

UPCOMING ACTIVITIES FOR 2009

- Selection of new contractor
- Truck transport of soil from the creek area, near the Peerless Road bridge, to the East Plant Area
- Completion of the Vault cover
- Continuance of work on the East Plant Area Cover System
- Continue RFI groundwater monitoring
- Continue road repair work, as needed



COMMUNITY RELATIONS ACTIVITIES

RCRA CORRECTIVE ACTION/CERCLA REMOVAL ACTION

G M P O W E R T R A I N B E D F O R D P L A N T , B E D F O R D , I N D I A N A

- Community meetings are held on a quarterly basis.
 - Presentations have been and will continue to be posted to the website.
 - People can always come to the field trailer and talk one-on-one.
- Next meetings will be held in September 2009



COMMUNITY RELATIONS ACTIVITIES

RCRA CORRECTIVE ACTION/CERCLA REMOVAL ACTION

G M P O W E R T R A I N B E D F O R D P L A N T , B E D F O R D , I N D I A N A

- Project website at:
<http://www.BedfordPowertrainCorrectiveAction.com>
- Quarterly Community Meetings are available on the website
- GM Community Relations Contact person is Susan Waun and the communications number is (812) 583-3753
- Public Information Repository (GM Plant) currently by appointment with Susan and repository publications are also available on the project website
- Community Liaison Panel (CLP)
- Periodic information sessions
- Periodic Project Fact Sheets (twenty-four issued to date)
- Truck Traffic Issues: Katie Kamm – (812) 279-0977