



GM CETC BEDFORD FACILITY BEDFORD, INDIANA

RCRA CORRECTIVE ACTION/CERCLA REMOVAL ACTION

G M C E T C B E D F O R D F A C I L I T Y , B E D F O R D , I N D I A N A

Welcome to the 3rd Quarter 2011 Public Information Session September 29, 2011



- Facility located on 152.5 acres and is approximately 1,000,000 square feet of manufacturing footprint
- Approximately 400 employees



- Comprehensive Environmental Response, Compensation, and Liability Act (CERCLA) Removal Action (RA)
 - Bailey's Branch and Pleasant Run PCB cleanup of creek sediments and floodplain soil.
 - RA Elements:
 - Control of impacted springs and seeps along creeks; and
 - Removal of floodplain soil to 1.8 ppm and sediment to 1 ppm in the creek. Removal is complete.
 - Remedy for large spring on Baileys Branch still to be implemented this year.
 - Restoration will continue into 2012.



REMOVAL ACTION STATUS

RCRA CORRECTIVE ACTION/CERCLA REMOVAL ACTION

GM CETC BEDFORD FACILITY, BEDFORD, INDIANA

**COMPLETED
EXCAVATION WEST
OF PEERLESS ROAD**

PARCEL 40

**PARCEL 400
INVESTIGATION
AREA**

WEST PLANT AREA

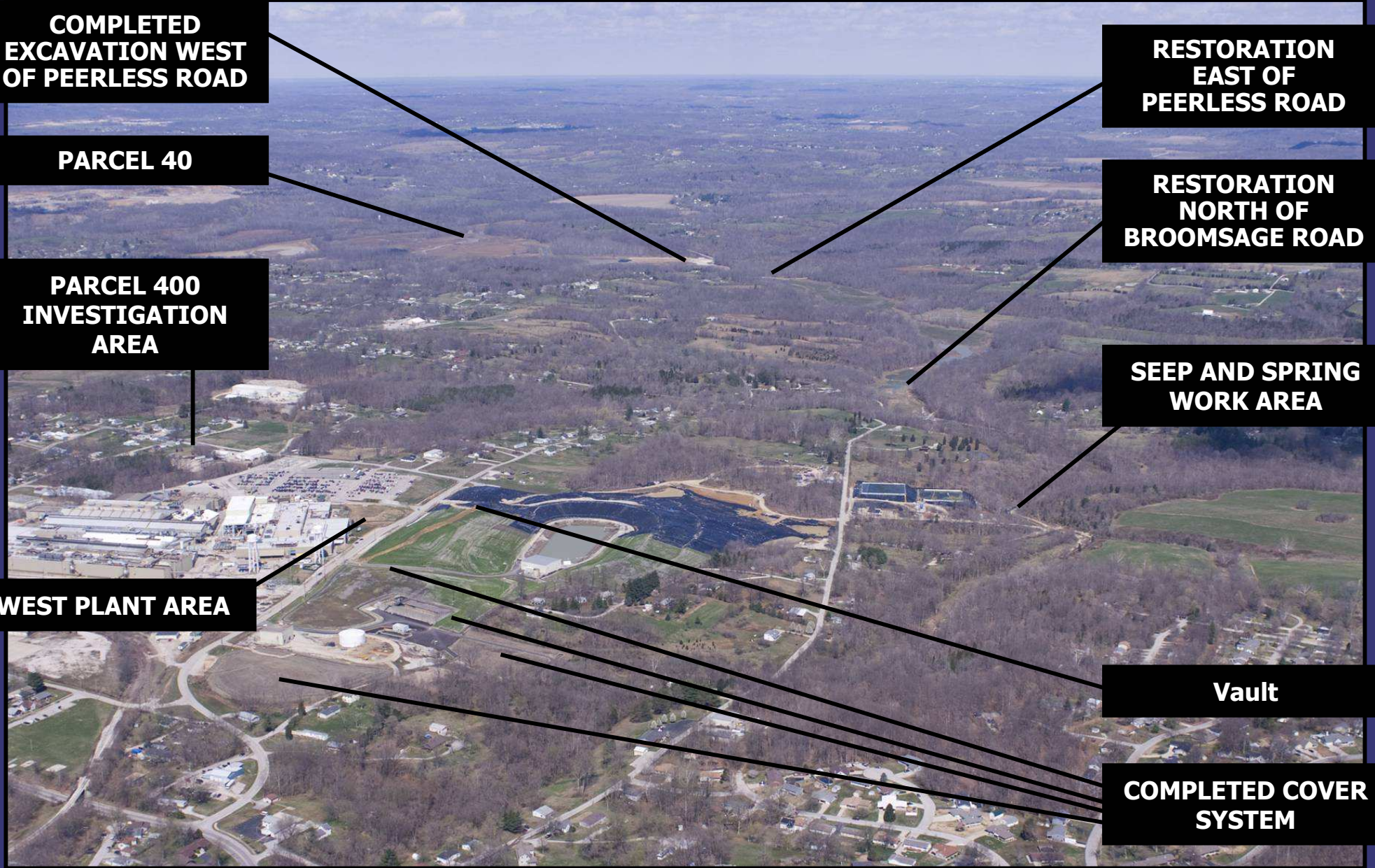
**RESTORATION
EAST OF
PEERLESS ROAD**

**RESTORATION
NORTH OF
BROOMSAGE ROAD**

**SEEP AND SPRING
WORK AREA**

Vault

**COMPLETED COVER
SYSTEM**

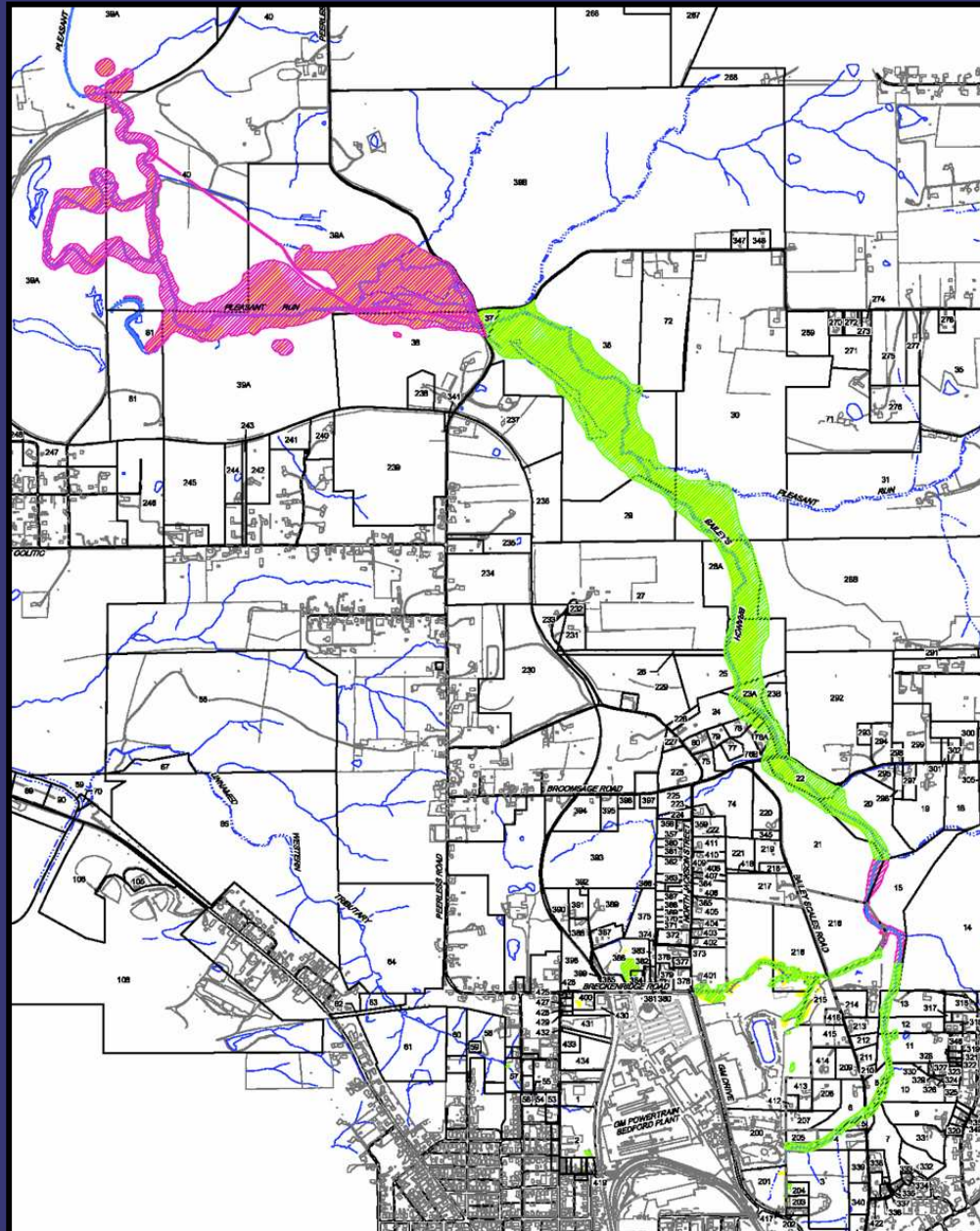




REMOVAL ACTION STATUS

RCRA CORRECTIVE ACTION/CERCLA REMOVAL ACTION

GM CETC BEDFORD FACILITY, BEDFORD, INDIANA





CREEK RESTORATION

RCRA CORRECTIVE ACTION/CERCLA REMOVAL ACTION

GM CETC BEDFORD FACILITY, BEDFORD, INDIANA



Restoration North of Broomsage Road



CREEK RESTORATION

RCRA CORRECTIVE ACTION/CERCLA REMOVAL ACTION

G M C E T C B E D F O R D F A C I L I T Y , B E D F O R D , I N D I A N A



Restoration North of Broomsage Road



CREEK RESTORATION STATUS

RCRA CORRECTIVE ACTION/CERCLA REMOVAL ACTION

GM CETC BEDFORD FACILITY, BEDFORD, INDIANA



Restoration east of Peerless Road



CREEK RESTORATION

RCRA CORRECTIVE ACTION/CERCLA REMOVAL ACTION

GM CETC BEDFORD FACILITY, BEDFORD, INDIANA



Restoration East of Peerless Road



CREEK EXCAVATION STATUS

RCRA CORRECTIVE ACTION/CERCLA REMOVAL ACTION

GM CETC BEDFORD FACILITY, BEDFORD, INDIANA



Complete Area G Excavation



CREEK EXCAVATION STATUS

RCRA CORRECTIVE ACTION/CERCLA REMOVAL ACTION

GM CETC BEDFORD FACILITY, BEDFORD, INDIANA

No Excavation

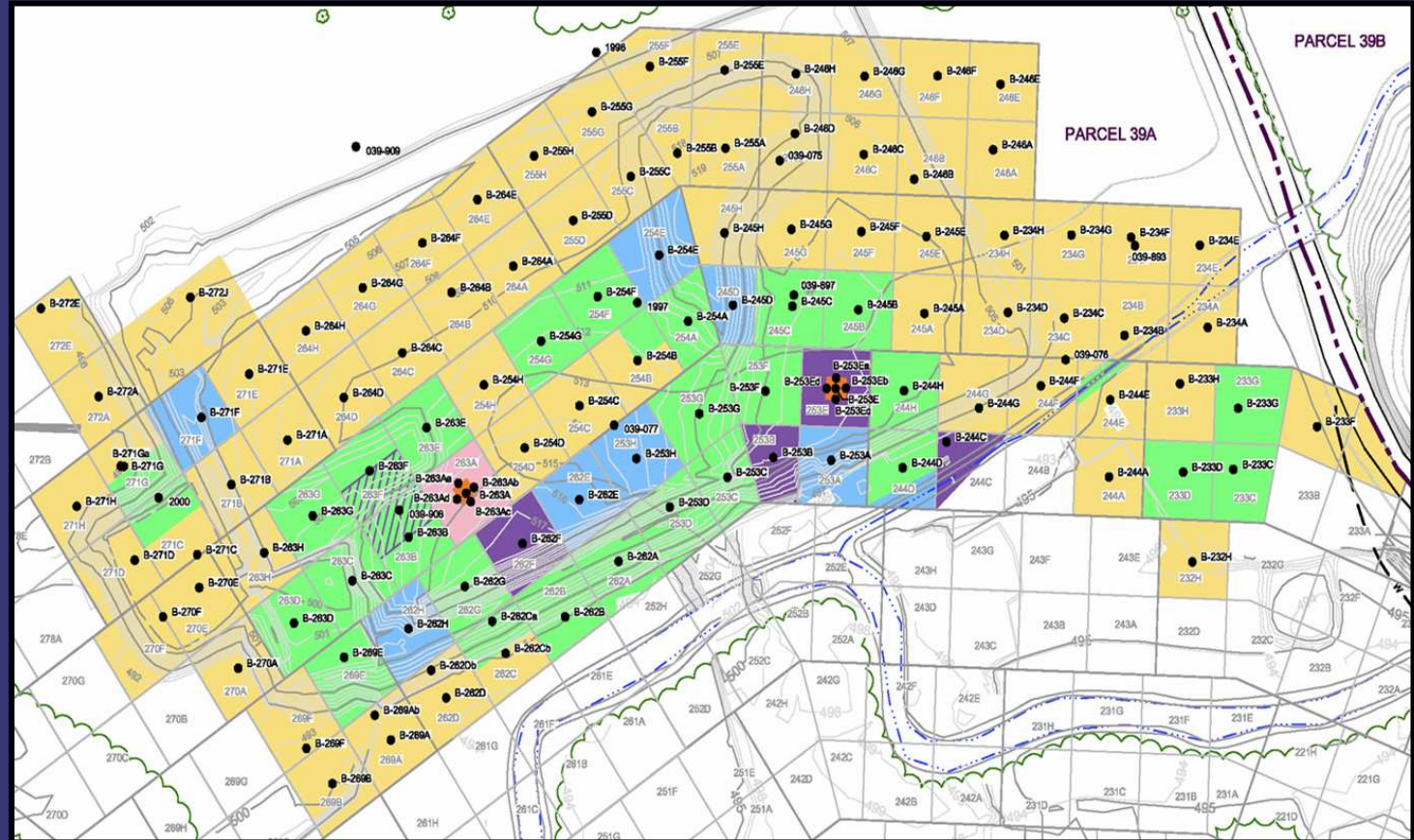
0.5 ft

1 ft

1.5 ft

2 ft

>50 ppm



Last excavation at Area 'G' was completed in August 2011



CREEK EXCAVATION STATUS

RCRA CORRECTIVE ACTION/CERCLA REMOVAL ACTION

GM CETC BEDFORD FACILITY, BEDFORD, INDIANA



Completed excavation area west of Peerless Road



SPRING 018

RCRA CORRECTIVE ACTION/CERCLA REMOVAL ACTION

GM CETC BEDFORD FACILITY, BEDFORD, INDIANA



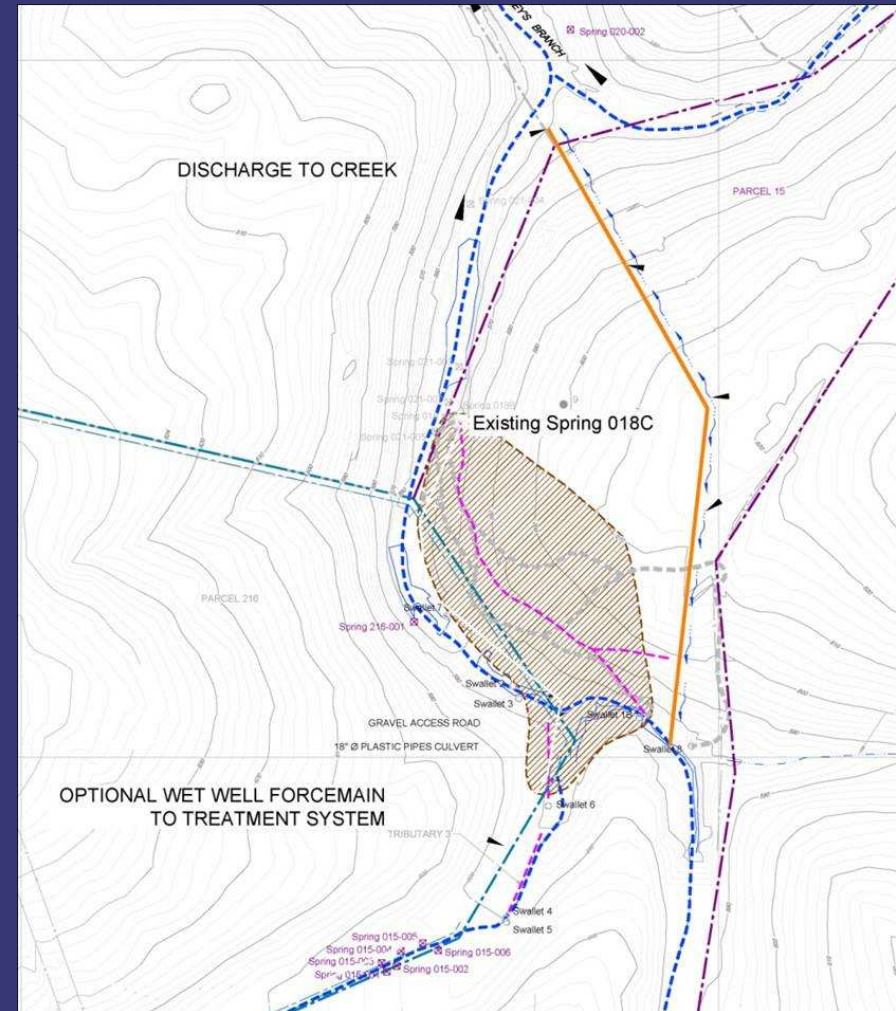


SPRING 018

RCRA CORRECTIVE ACTION/CERCLA REMOVAL ACTION

GM CETC BEDFORD FACILITY, BEDFORD, INDIANA

- Construct French-drain east of Spring 018
- Clean groundwater collected in the French-drain will be diverted around Spring 018 and discharge into the creek downstream of the Spring
- After rerouting of clean water, the reduced volume of water discharged at Spring 018 will continue to be collected and treated at one of the on-Site water treatment plants
- Currently in design phase, construction anticipated for late 2011



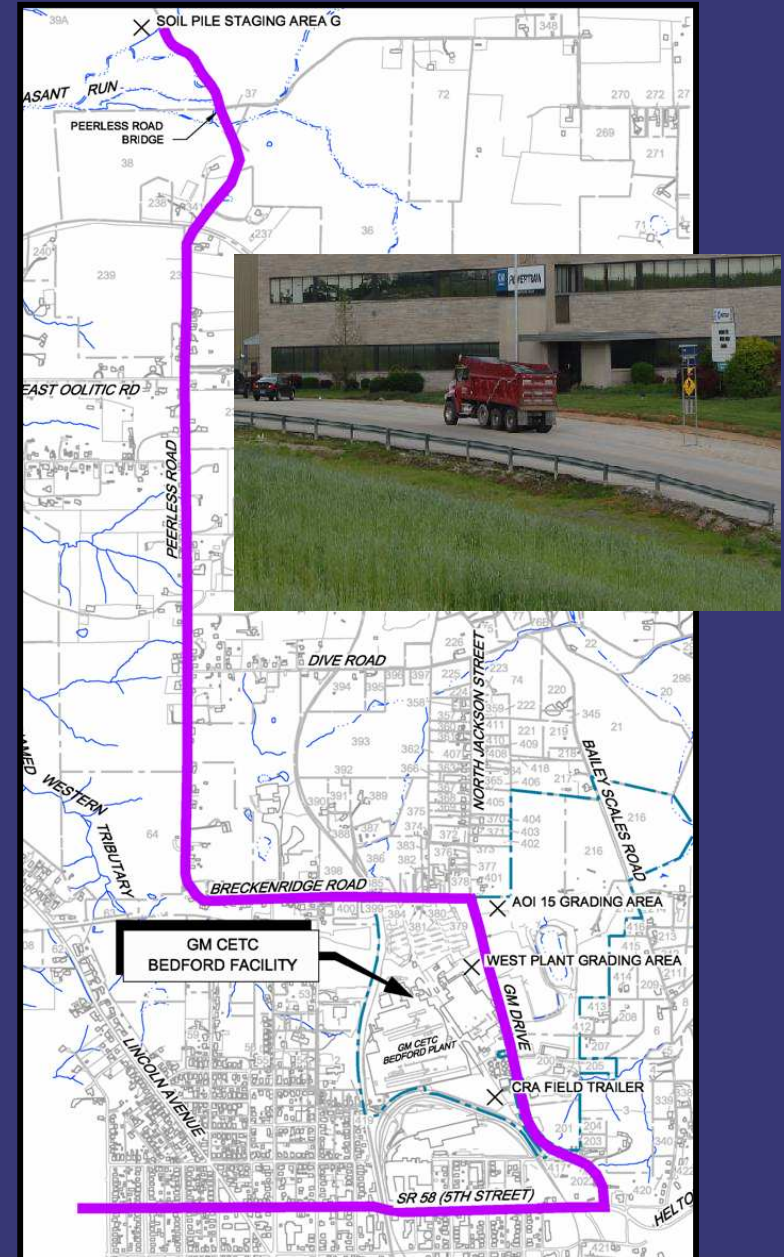


TRUCK TRAFFIC ROUTES

RCRA CORRECTIVE ACTION/CERCLA REMOVAL ACTION

GM CETC BEDFORD FACILITY, BEDFORD, INDIANA

- Road traffic has decreased since the completion of creek excavation and will continue to do so as construction activities taper off this fall.
- CRA monitors safety of truckers.
- GM will continue to monitor the need for patching roads as truck traffic continues throughout the remainder of 2011.
- Trucking is expected to pick up next summer during restoration completion as backfill and topsoil are hauled in for final grading.
- Once project truck traffic has ended, GM will place a final surface layer, as necessary, on the portions of Peerless and Breckenridge Roads paved in early 2010.
- Truck Traffic Issues:
Katie Kamm - (812) 277-8954





RCRA CORRECTIVE ACTION

RCRA CORRECTIVE ACTION/CERCLA REMOVAL ACTION

G M C E T C B E D F O R D F A C I L I T Y , B E D F O R D , I N D I A N A

- RCRA Corrective Action
 - Conducted in accordance with a performance-based agreement with the U.S. EPA Region V. The agreement was signed on March 20, 2001 and amended October 1, 2002, March 29, 2008, and May 9, 2008.



EAST PLANT AREA

RCRA CORRECTIVE ACTION/CERCLA REMOVAL ACTION

G M C E T C B E D F O R D F A C I L I T Y , B E D F O R D , I N D I A N A





EAST PLANT AREA

RCRA CORRECTIVE ACTION/CERCLA REMOVAL ACTION

GM CETC BEDFORD FACILITY, BEDFORD, INDIANA





EAST PLANT AREA

RCRA CORRECTIVE ACTION/CERCLA REMOVAL ACTION

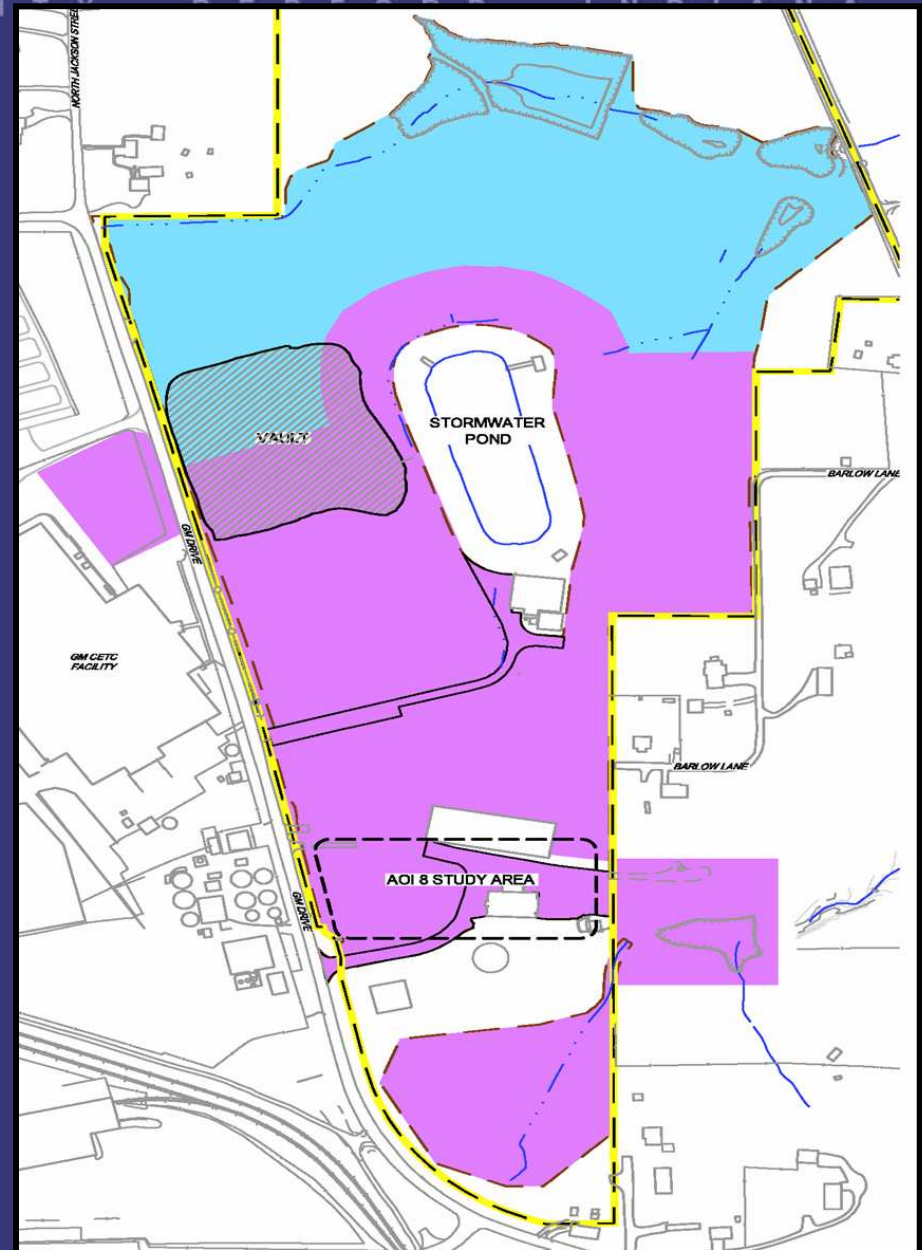
GM CETC BEDFORD FACILITY BEDFORD INDIANA

East Plant Area Interim Measure

- Re-use of creek soil
- Select soil removal/landfill vault
- Perimeter groundwater collection system
- AOI 8 collection system
- Long-term maintenance and monitoring
- Cover system

 Substantially complete cap areas

 Partially complete cap areas





EAST PLANT AREA

RCRA CORRECTIVE ACTION/CERCLA REMOVAL ACTION

G M C E T C B E D F O R D F A C I L I T Y , B E D F O R D , I N D I A N A



Completed and partially completed cover work around the storm water pond.



EAST PLANT AREA

RCRA CORRECTIVE ACTION/CERCLA REMOVAL ACTION

G M C E T C B E D F O R D F A C I L I T Y , B E D F O R D , I N D I A N A



Detention basin construction north of the storm water pond to be completed in 2011.



EAST PLANT AREA

RCRA CORRECTIVE ACTION/CERCLA REMOVAL ACTION

G M C E T C B E D F O R D F A C I L I T Y , B E D F O R D , I N D I A N A



Cover System installation 2011:

- Overseeding of vegetation areas completed in fall 2010 – good grass growth emerged this spring on completed areas.
- Cover construction will be completed by the end of this year.



WEST PLANT AREA

RCRA CORRECTIVE ACTION/CERCLA REMOVAL ACTION

GM CETC BEDFORD FACILITY, BEDFORD, INDIANA





WEST PLANT AREA

RCRA CORRECTIVE ACTION/CERCLA REMOVAL ACTION

GM CETC BEDFORD FACILITY, BEDFORD, INDIANA



- Construction of the permanent vegetative and asphalt cover placed over the former excavation resumed in June 2011.
- Asphalt cover completed in August 2011.



WEST PLANT AREA

RCRA CORRECTIVE ACTION/CERCLA REMOVAL ACTION

GM CETC BEDFORD FACILITY, BEDFORD, INDIANA

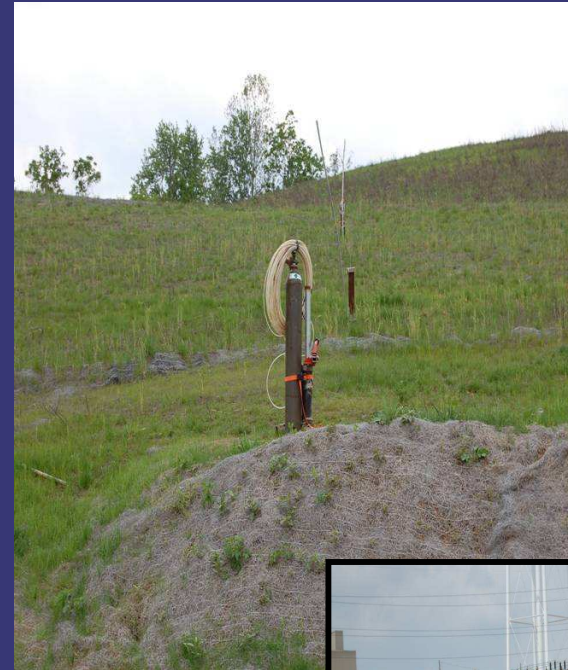


- Additional sampling completed in August 2011 the “front lawn” area of the plant.
- Additional excavation completed in the West Plant Area.
- Excavation depth ranged between 1 and 1.5 feet below ground surface.
- Excavation and backfill completed in August 2011.



AOI 8 COLLECTION SYSTEM

- Packer testing on existing wells with oil as part of additional bedrock studies completed in the spring of 2011 at AOI 8
- Vertical oil delineation testing at 2 wells southeast of the facility started in March 2011
- Packer testing confirmed the location of fractures containing oil.
- Following review of collected data, an oil recovery system will be designed and constructed in 2011/2012





UPCOMING ACTIVITIES

RCRA CORRECTIVE ACTION/CERCLA REMOVAL ACTION

G M C E T C B E D F O R D F A C I L I T Y , B E D F O R D , I N D I A N A

UPCOMING ACTIVITIES FOR 2011

- Complete additional bedrock study at AOI 8
- Complete IM Work Plan for properties west of the Plant
- Complete East Plant Area Cover System
- Complete closure of TSCA vault
- Complete installation of additional coreholes at Spring 018
- Complete installation of Spring 018 remedy
- Continue RFI groundwater monitoring
- Complete installation of additional coreholes along alignment of perimeter groundwater collection trench
- Site will be shut down, except for maintenance activities, until 2012

UPCOMING ACTIVITIES FOR 2012

- Complete installation of pilot groundwater collection trench
- Complete IM construction for properties west of the Plant
- Complete restoration of properties west of Peerless Rd.



COMMUNITY RELATIONS ACTIVITIES

RCRA CORRECTIVE ACTION/CERCLA REMOVAL ACTION

G M C E T C B E D F O R D F A C I L I T Y , B E D F O R D , I N D I A N A

- Community meetings have been held on a quarterly basis.
 - Due to the significantly reduced activities during the winter, no meetings are planned work resumes in summer 2012
 - GM will revise the public invitation mailing list based on postcard responses. Meetings will continue to be announced in the Bedford Times Mail.
 - Presentations have been and will continue to be posted to the website
 - People can always call Katie Kamm with questions: (812) 277-8954
- A CLP Meeting will be held tomorrow



COMMUNITY RELATIONS ACTIVITIES

RCRA CORRECTIVE ACTION/CERCLA REMOVAL ACTION

G M C E T C B E D F O R D F A C I L I T Y , B E D F O R D , I N D I A N A

- Project website at:
<http://www.BedfordPowertrainCorrectiveAction.com>
- Quarterly Community Meetings are available on the website
- All final documents can be found on the project website
- Community Liaison Panel (CLP) – members listed in minutes on website
- Periodic information sessions – next meeting likely to be held in summer 2012.
- Periodic Project Fact Sheets (thirty-three issued to date)
- Project Questions or Truck Traffic Issues contact Katie Kamm:
(812) 277-8954