



BEDFORD PLANT CORRECTIVE ACTION

G M G P S B E D F O R D F A C I L I T Y , B E D F O R D , I N D I A N A

Public Information Session

June 14, 2017



- Facility located on 152.5 acres and is approximately 1,000,000 square feet of manufacturing footprint
- Approximately 450 employees



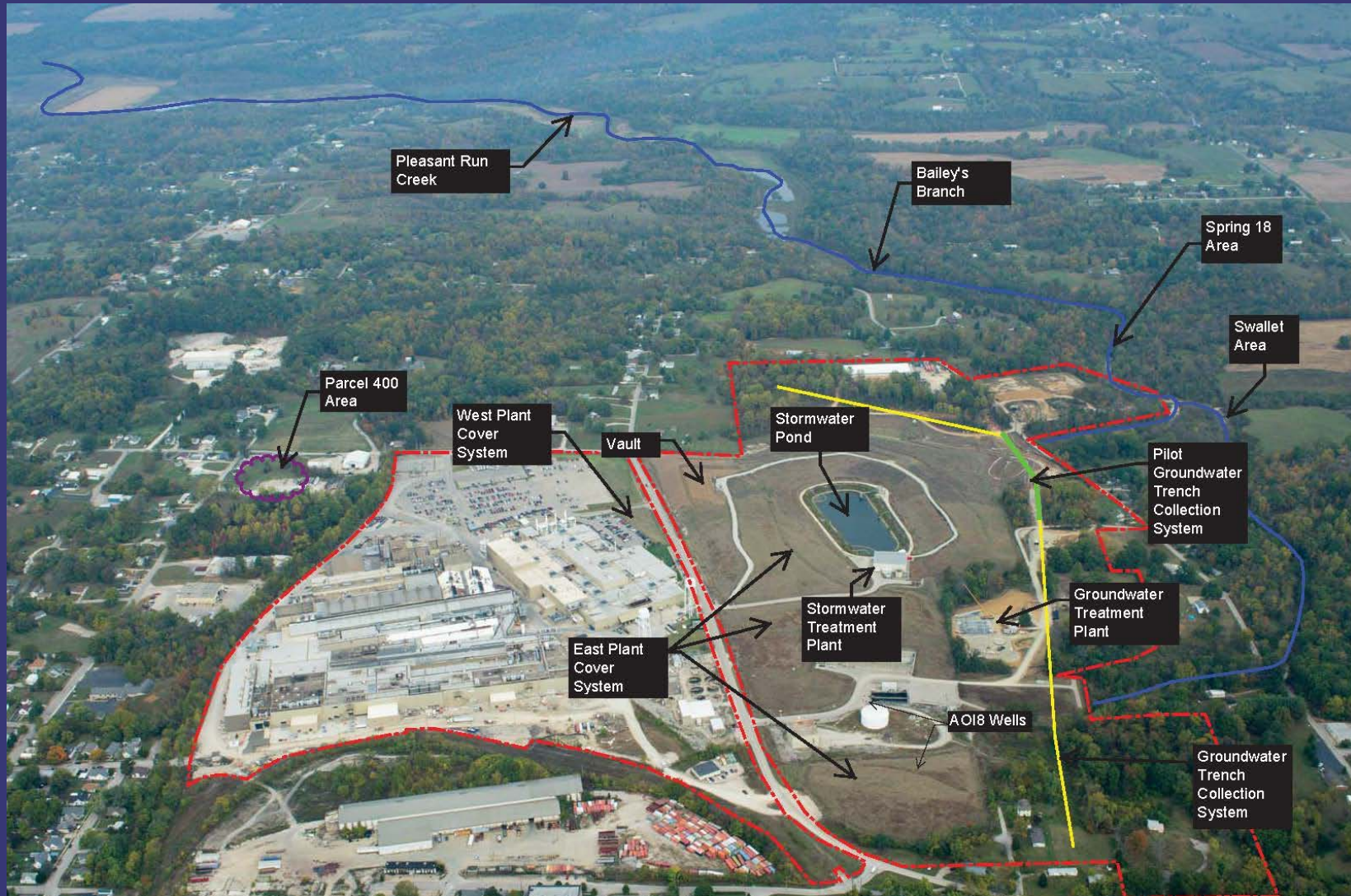
G M G P S B E D F O R D F A C I L I T Y , B E D F O R D , I N D I A N A

- Comprehensive Environmental Response, Compensation, and Liability Act (CERCLA) Removal Action (RA)
 - Bailey's Branch and Pleasant Run PCB cleanup of creek sediments and floodplain soil
 - RA Elements:
 - Control of impacted springs and seeps along creek
 - Removal of floodplain soil to 1.8 ppm and sediment to 1 ppm in the creek (removal is complete)
 - Monitoring continues for large spring on Baileys Branch Creek.
 - Creek and floodplain restoration was completed in August 2014.
- RCRA Corrective Action
 - GM LLC and USEPA entered into an AOC for those areas which GM LLC is responsible.



GM BEDFORD REMEDIATION PROJECT

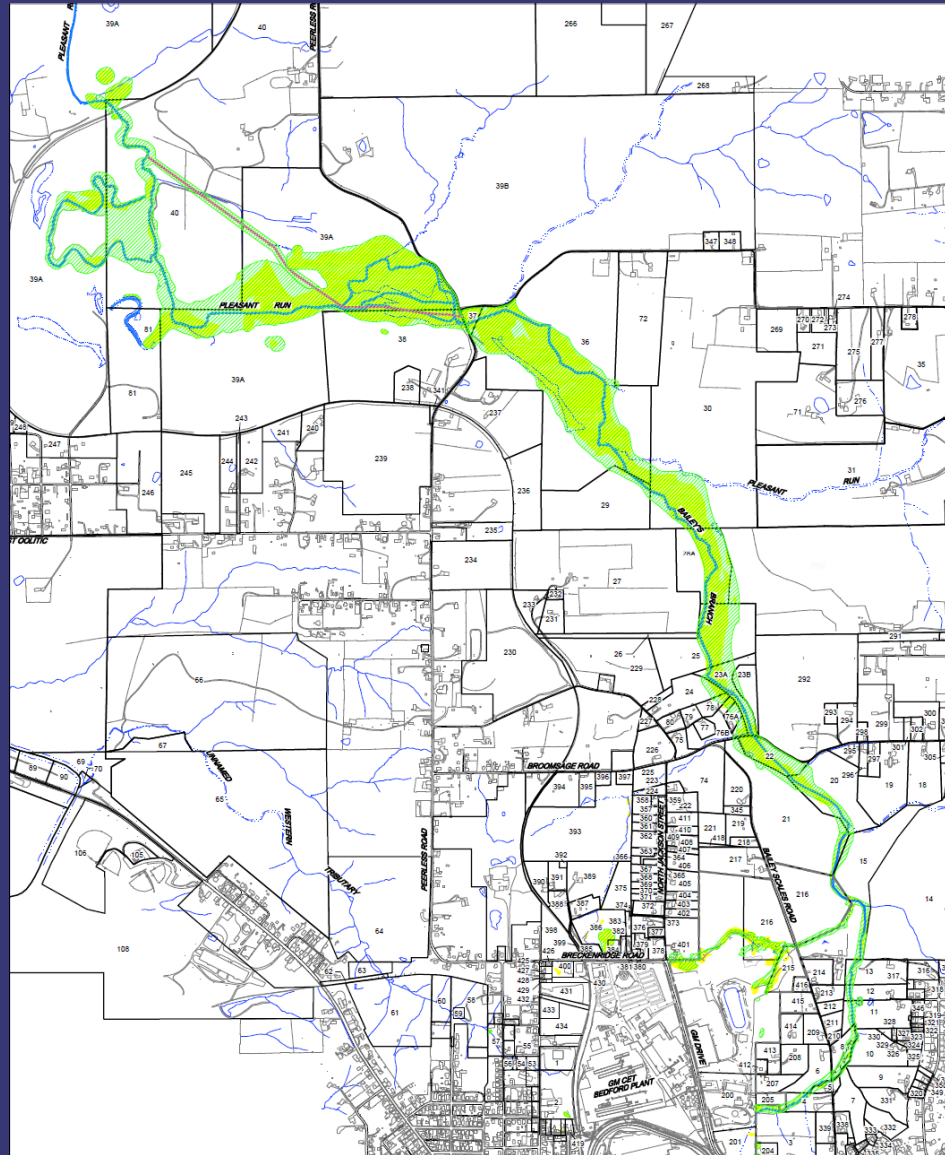
G M G P S B E D F O R D F A C I L I T Y , B E D F O R D , I N D I A N A





REMOVAL ACTION STATUS

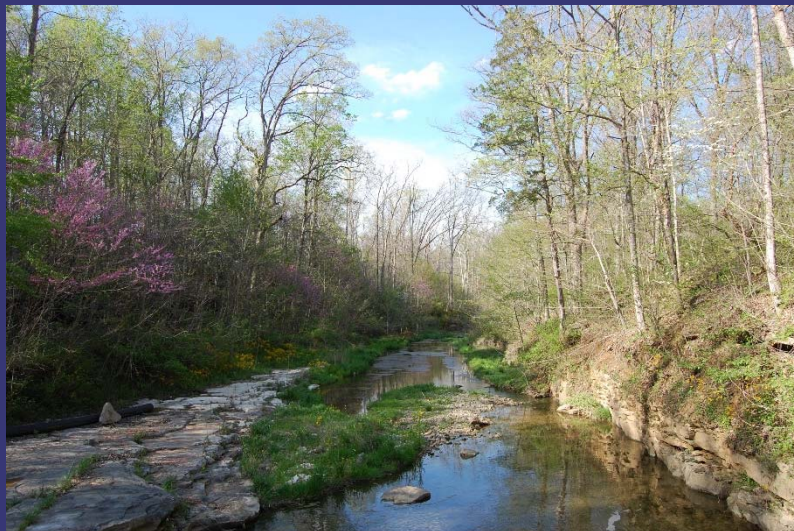
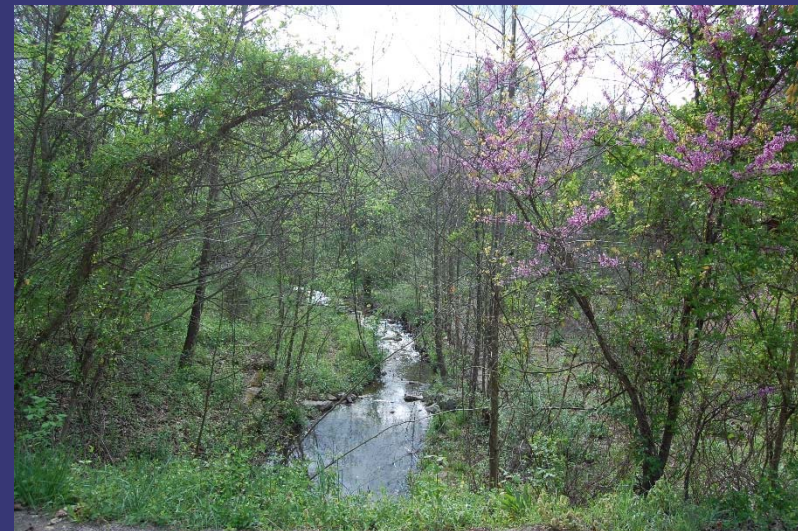
G M G P S B E D F O R D F A C I L I T Y , B E D F O R D , I N D I A N A





CREEK RESTORATION

G M G P S B E D F O R D F A C I L I T Y , B E D F O R D , I N D I A N A





CREEK RESTORATION

G M G P S B E D F O R D F A C I L I T Y , B E D F O R D , I N D I A N A





PILOT PERIMETER GROUNDWATER TRENCH COLLECTION SYSTEM

G M G P S B E D F O R D F A C I L I T Y , B E D F O R D , I N D I A N A

- The Pilot Perimeter Groundwater Trench Collection System was designed to work in conjunction with the East Plant Source Removal and Cover System to provide horizontal control of groundwater transport.
- Pilot perimeter groundwater trench collection system construction was completed in August 2016 and has been operating since that time.





STORM POND SEDIMENT REMOVAL

G M G P S B E D F O R D F A C I L I T Y , B E D F O R D , I N D I A N A

- Storm Pond (originally built in 1981) receives stormwater runoff from the Facility. Pre-design studies found an average sediment depth of 2.2 ft.
- Project Scope:
 - Raise the access road around the perimeter of the pond to provide additional stormwater storage capacity
 - Remove sediments from the pond bottom through combination of wet dredging/filter press and sediment stabilization/dry excavation
 - Line pond bottom and sides with 100 mil thickness liner
 - Material disposal at appropriate landfills





STORM POND SEDIMENT REMOVAL - WET DREDGING





STORM POND SEDIMENT REMOVAL - DRY EXCAVATION

G M G P S B E D F O R D F A C I L I T Y , B E D F O R D , I N D I A N A





STORM POND SEDIMENT REMOVAL – LINER INSTALLATION

G M G P S B E D F O R D F A C I L I T Y , B E D F O R D , I N D I A N A





GWTP OPERATIONS

G M G P S B E D F O R D F A C I L I T Y , B E D F O R D , I N D I A N A

- GWTP treats groundwater from the perimeter trench, site source control wet wells, and vault sumps.
- Treated water discharges are monitored through a NPDES permit managed by GM Remediation.





GWTP OPERATIONS

G M G P S B E D F O R D F A C I L I T Y , B E D F O R D , I N D I A N A

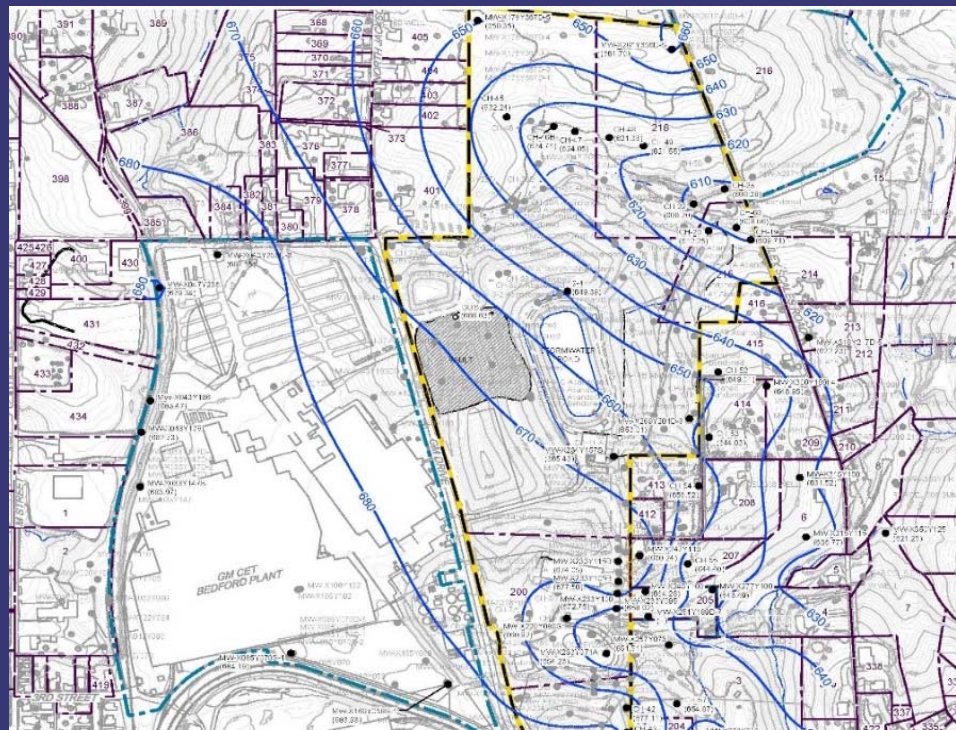




EI CA750 GROUNDWATER MONITORING

GM GPS BEDFORD FACILITY, BEDFORD, INDIANA

- Quarterly groundwater level measurements collected.
- Groundwater sampling events conducted in December 2016 and May 2017.
- Groundwater elevations show no significant changes

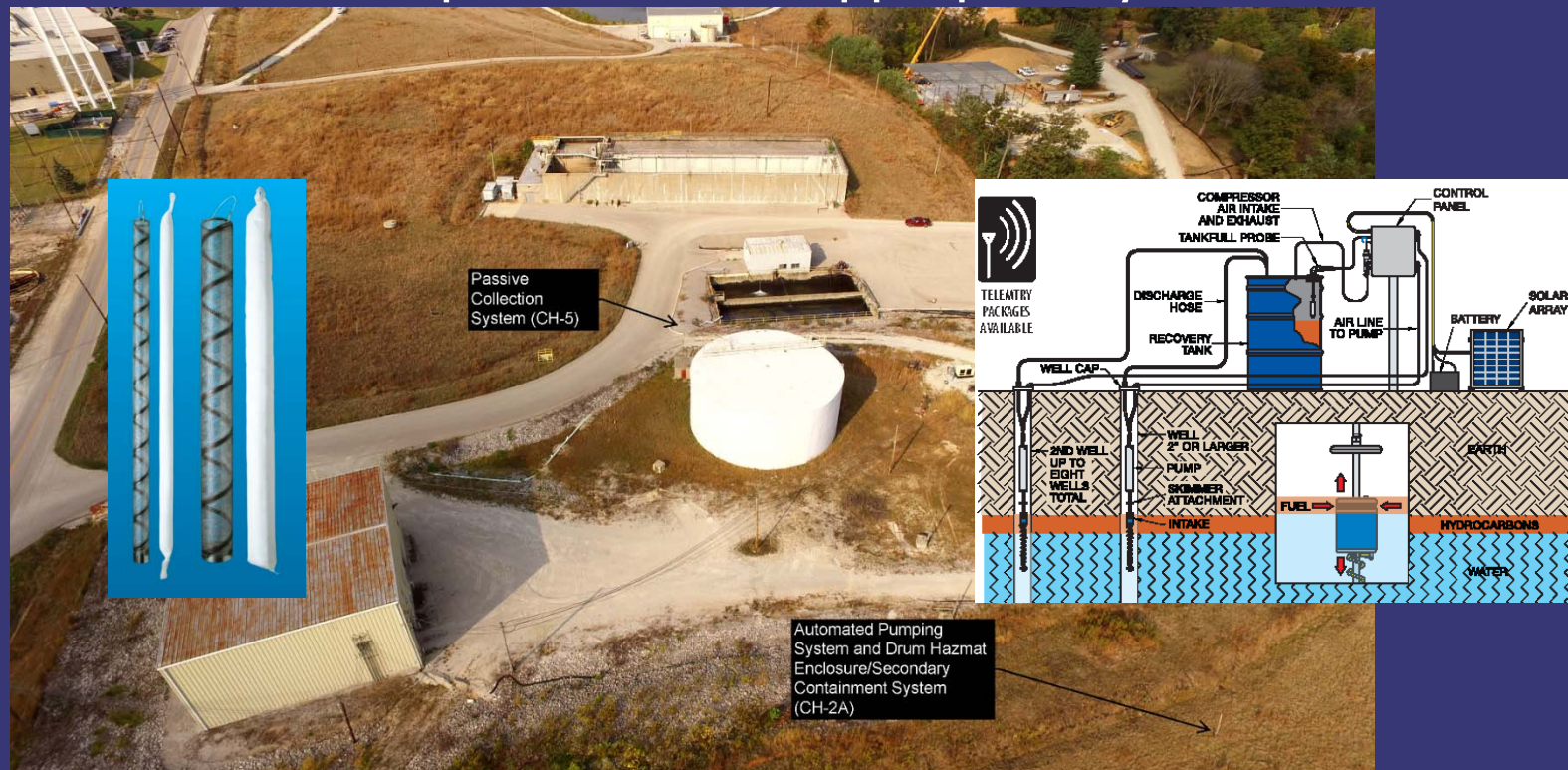




AOI 8 OIL COLLECTION SYSTEM

G M G P S B E D F O R D F A C I L I T Y , B E D F O R D , I N D I A N A

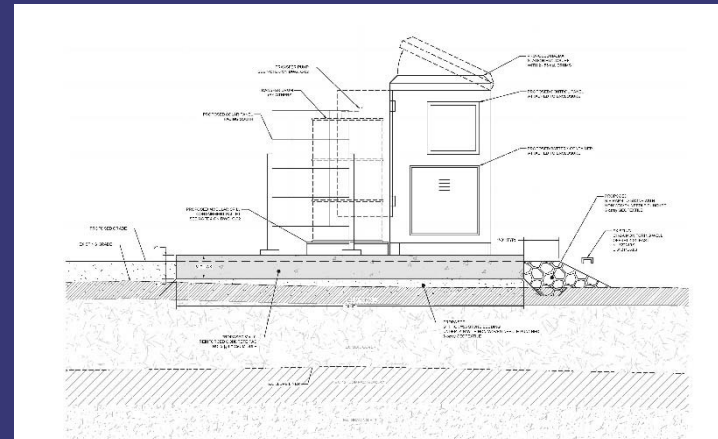
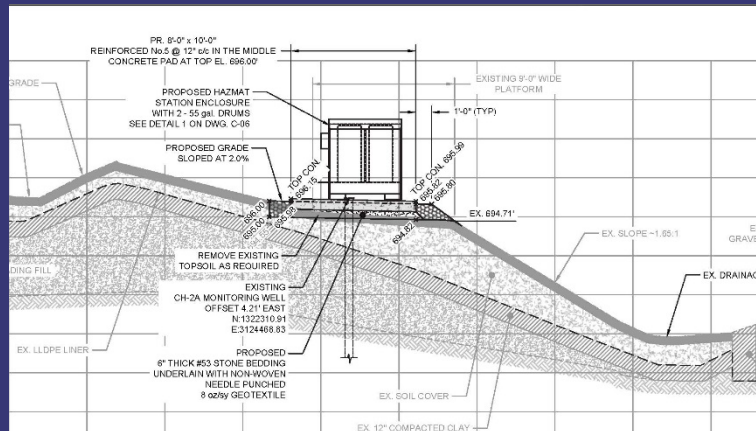
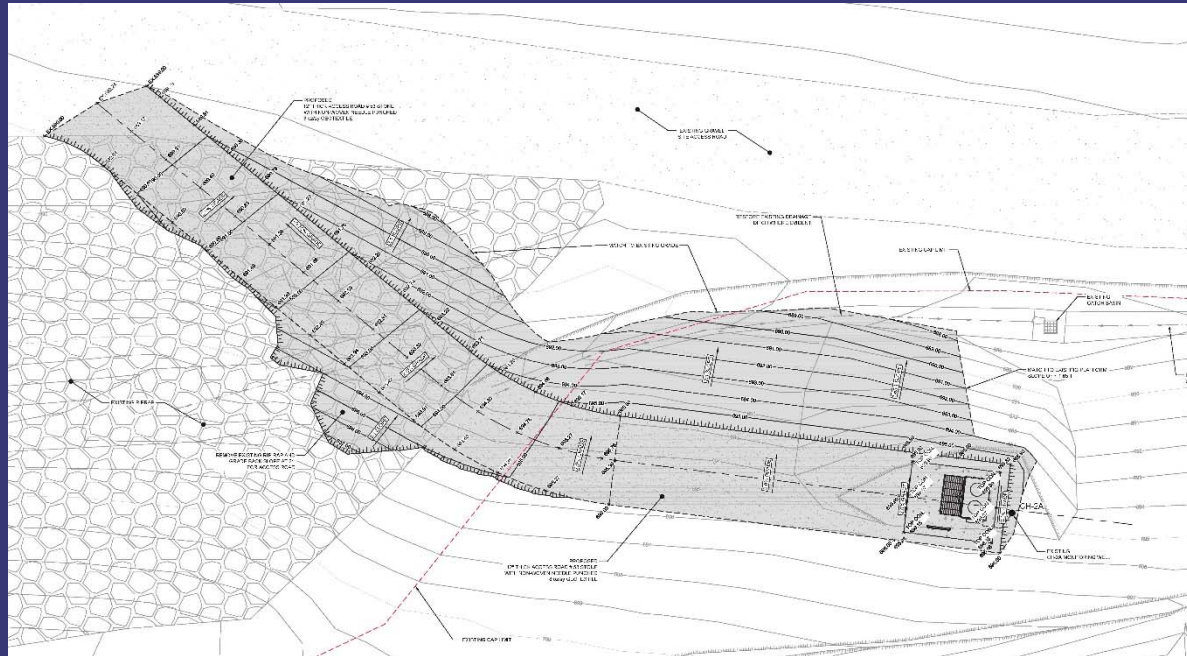
- U.S.EPA approved conceptual design.
- GM Remediation will coordinate installation schedule with Bedford Plant.
- Material will be disposed off site appropriately.





AOI 8 OIL COLLECTION SYSTEM

GM GPS BEDFORD FACILITY, BEDFORD, INDIANA





SPRING 18 AND SWALLET MONITORING

G M G P S B E D F O R D F A C I L I T Y , B E D F O R D , I N D I A N A

- GM continues to collect samples from Spring 18 and analyze for PCBs.

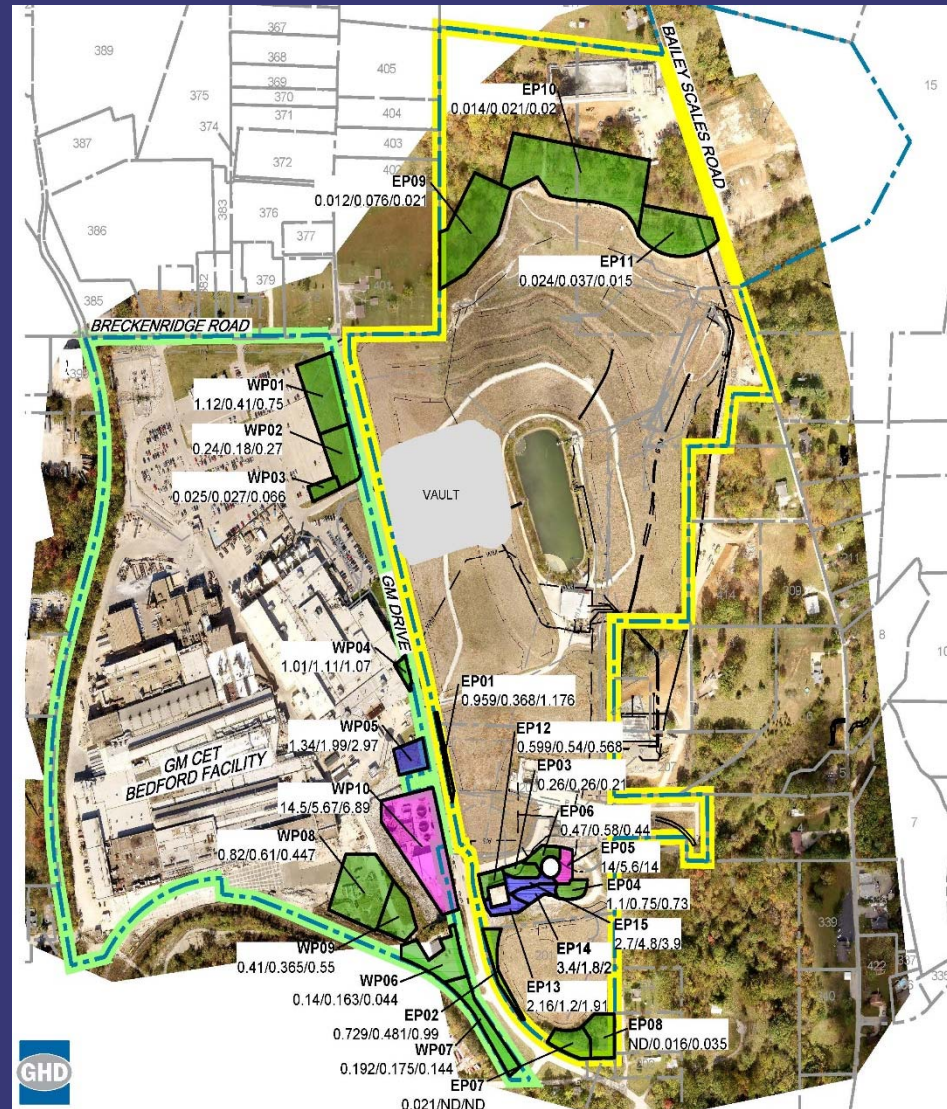
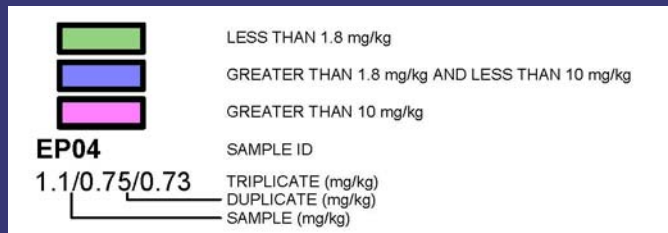




INCREMENTAL SOIL SAMPLING PLAN

G M G P S B E D F O R D F A C I L I T Y , B E D F O R D , I N D I A N A

- Sampling targeted areas:
 - Not covered by East/West Plant Cover System.
 - Not currently paved with hard surface maintained by Plant.
 - Areas more prone to potential worker exposures.





COMMUNITY RELATIONS ACTIVITIES

G M G P S B E D F O R D F A C I L I T Y , B E D F O R D , I N D I A N A

- Community meetings have been held on a regular basis, currently meeting twice/year
 - Meetings will continue to be announced in the Bedford Times Mail
 - Presentations have been and will continue to be posted to the website and the library
 - People can always call Katie Kamm with questions: (812) 277-8954
- The last public meeting was held in December 2016.
- CLP and public meetings have been combined as project transitions into O&MM
- Information from the presentations are posted to the website



COMMUNITY RELATIONS ACTIVITIES

- Project website at:
<http://www.BedfordPowertrainCorrectiveAction.com>
- Community Meetings are available on the website
- Final approved documents can be found on the project website
- Periodic information sessions – next meeting likely to be held December 2017.
- Periodic Project Fact Sheets
- Project Questions contact Katie Kamm: (812) 277-8954