



RCRA CORRECTIVE ACTION PROGRAM/REMOVAL ACTION

G M P O W E R T R A I N B E D F O R D P L A N T B E D F O R D , I N D I A N A

INFORMATION SESSION

GM POWERTRAIN BEDFORD PLANT
BEDFORD, INDIANA

AUGUST 5, 2004



- WELCOME/INTRODUCTION
- PROJECT BASICS
- STATUS OF RCRA CORRECTIVE ACTION
- STATUS OF CERCLA REMOVAL ACTION
- PROPERTY ISSUES
- COMMUNITY RELATIONS ACTIVITIES
- QUESTIONS AND ANSWERS



Welcome to the 3rd Quarter 2004 Public Information Session

- Team Introduction
- History of the GM Bedford Powertrain Facility
- Overview of the project



- Facility located on 152.5 acres and is approximately 1,000,000 square feet
- Approximately 1,000 employees



- RCRA Corrective Action
 - Conducted under the Resource Conservation and Recovery Act (RCRA) Corrective Action under a performance-based agreement with the U.S. EPA Region V. The agreement was signed on March 20, 2001 and amended on October 1, 2002.
 - On-Site and off-Site investigation
 - Soils
 - Test Pits
 - Groundwater
 - Groundwater Investigation
 - Interim Measures
 - On-Site
 - Off-Site
- CERCLA Removal Action
 - Bailey's Branch and Pleasant Run PCB cleanup of creek sediments and floodplain soil.
 - Conducted through an Administrative Order on Consent (AOC) that has been entered into voluntarily by the U.S. EPA Region V and GM to expedite the cleanup activities, effective July 31, 2003.



STATUS OF RCRA CORRECTIVE ACTION

RCRA CORRECTIVE ACTION PROGRAM/REMOVAL ACTION

GM POWERTRAIN BEDFORD PLANT BEDFORD, INDIANA

Investigation Activities for 2004

- RCRA Facility Investigation (RFI) Work Plan: Addendum No. 3 has been completed. This work plan included:
 - The advancement of 34 soil borings, including the installation of one shallow groundwater monitoring well
 - The collection of 49 soil samples and one groundwater sample
 - The confirmation and delineation of three historical drainage areas on the GM Plant property
- Data are pending and will be summarized in a technical addendum this fall.





STATUS OF RCRA CORRECTIVE ACTION

RCRA CORRECTIVE ACTION PROGRAM/REMOVAL ACTION

G M P O W E R T R A I N B E D F O R D P L A N T B E D F O R D , I N D I A N A

Investigation Activities for 2004

- RCRA Facility Investigation Work Plan: Addendum No. 4 have been completed. This work plan included:
 - Test pits east of GM Drive in known, or suspected, fill areas
 - Off-site at test pits were completed at three areas suspected of being historically filled with materials from the GM Plant
 - One additional historical suspected fill area will be investigated through the use of soil borings, based on the owners request of a less intrusive investigation tool





STATUS OF RCRA CORRECTIVE ACTION

RCRA CORRECTIVE ACTION PROGRAM/REMOVAL ACTION

G M P O W E R T R A I N B E D F O R D P L A N T B E D F O R D , I N D I A N A

Investigation Activities for 2004 (cont'd)

- RFI Work Plan: Addendum No. 5 has been partially completed.
 - Additional wells have been installed, developed, and sampled along the creek;
 - PCB samples have been collected; and
 - Background fluorescence samples have been collected
- A dye trace study will be performed in September 2004. Dye Tracer studies:
 - Are conducted to evaluate groundwater flow in karst,
 - Involve injecting harmless dye into groundwater and then analyzing groundwater by tracing where it comes to the surface (seeps/springs and wells), and
 - May result in water that appears fluorescent green or red in color and may be visible in surface water during testing.





STATUS OF RCRA CORRECTIVE ACTION

RCRA CORRECTIVE ACTION PROGRAM/REMOVAL ACTION

G M P O W E R T R A I N B E D F O R D P L A N T B E D F O R D , I N D I A N A

Investigation Activities for 2004 (cont'd)

- Interim Measures.
 - Northern and Western Tributaries IMs
 - Northern Tributary IM:
 - Small isolated areas on a parcel where sample results showed PCBs slightly above cleanup criteria.
 - Western Tributary IM:
 - Small isolated areas on 3 parcels where sample results showed PCBs slightly above cleanup criteria.
 - Cleanup at each parcel will typically involve 1-2 truckloads of soil/sediment or less to be removed. Planned to be completed in August/September 2004. Verification sampling will be completed to confirm cleanup goals are met. All disturbed areas will be restored.
 - East Plant Area IM



STATUS OF RCRA CORRECTIVE ACTION

RCRA CORRECTIVE ACTION PROGRAM/REMOVAL ACTION

G M P O W E R T R A I N B E D F O R D P L A N T B E D F O R D , I N D I A N A

Ecological Risk Assessment

- The preliminary framework has been submitted to the U.S. EPA for review
- This document looks at three representative species data end points
 - Piscivore
 - Insectivore
 - Carnivore



STATUS OF CERCLA REMOVAL ACTION

RCRA CORRECTIVE ACTION PROGRAM/REMOVAL ACTION

G M P O W E R T R A I N B E D F O R D P L A N T B E D F O R D , I N D I A N A

Elements of Removal Work

- Control of impacted seeps and springs along creeks;
- Removal of floodplain soil and sediment in the creek;
 - Site setup;
 - Removal of sediment to attain the 1 ppm cleanup criterion;
 - Removal of floodplain soil to attain the 1.8 ppm cleanup criterion;
 - Test to verify cleanup requirements have been met;
 - Backfilling and re-planting; and
 - Soil staging area construction.



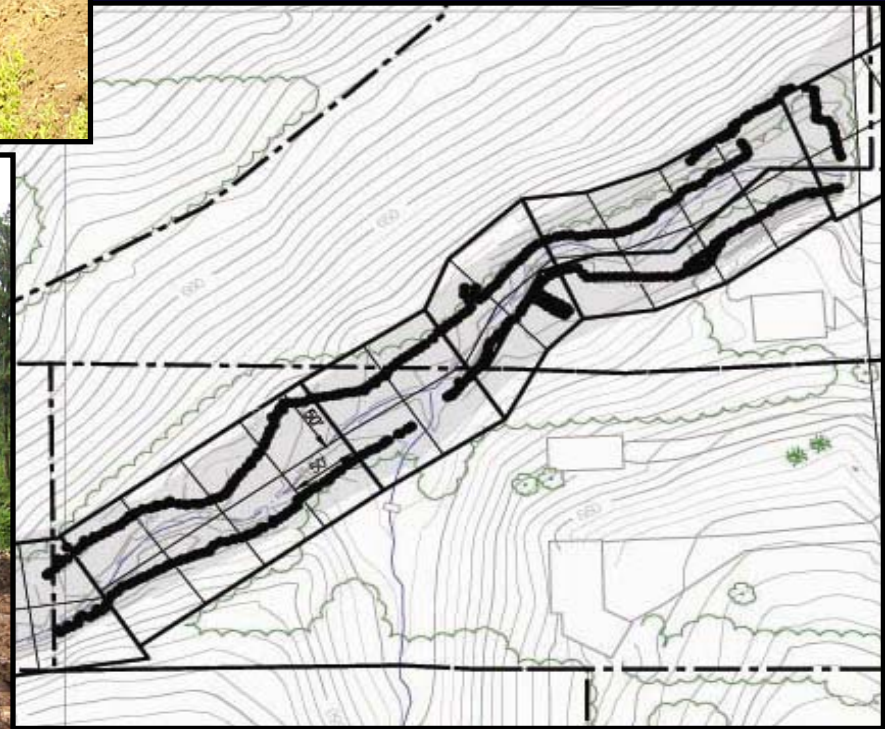
STATUS OF CERCLA REMOVAL ACTION REMOVAL ACTIVITIES

RCRA CORRECTIVE ACTION PROGRAM/REMOVAL ACTION

G M P O W E R T R A I N B E D F O R D P L A N T B E D F O R D , I N D I A N A



Excavation activities





STATUS OF CERCLA REMOVAL ACTION REMOVAL ACTIVITIES

RCRA CORRECTIVE ACTION PROGRAM/REMOVAL ACTION

G M P O W E R T R A I N B E D F O R D P L A N T B E D F O R D , I N D I A N A

Air monitoring activities





STATUS OF CERCLA REMOVAL ACTION REMOVAL ACTIVITIES

RCRA CORRECTIVE ACTION PROGRAM/REMOVAL ACTION

G M P O W E R T R A I N B E D F O R D P L A N T B E D F O R D , I N D I A N A

Trucks and haul roads





STATUS OF CERCLA REMOVAL ACTION REMOVAL ACTIVITIES

RCRA CORRECTIVE ACTION PROGRAM/REMOVAL ACTION

G M P O W E R T R A I N B E D F O R D P L A N T B E D F O R D , I N D I A N A

Staging Pad

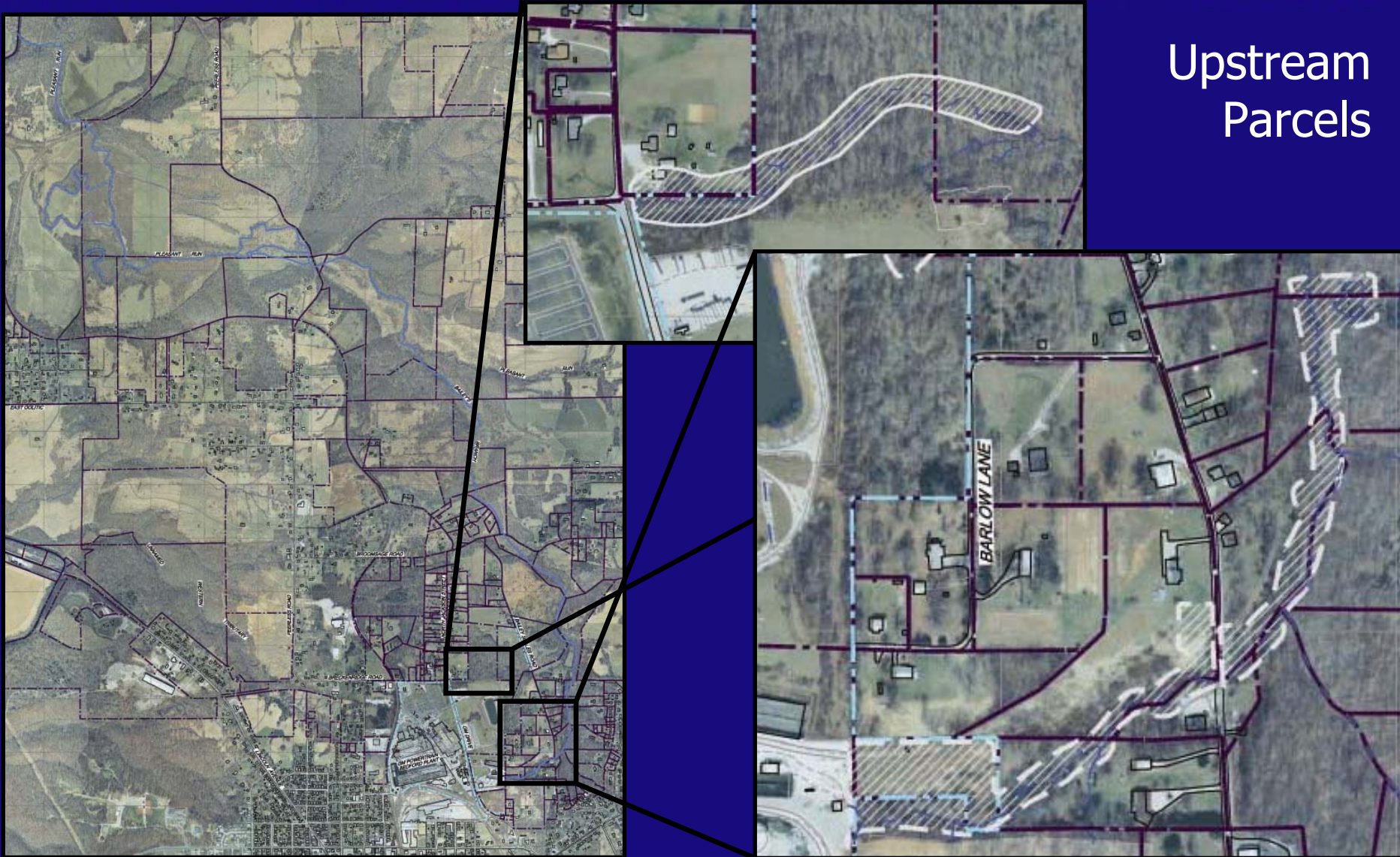




STATUS OF CERCLA REMOVAL ACTION REMOVAL ACTIVITIES

RCRA CORRECTIVE ACTION PROGRAM/REMOVAL ACTION

GM POWERTRAIN BEDFORD PLANT BEDFORD, INDIANA



Upstream
Parcels



STATUS OF CERCLA REMOVAL ACTION

RCRA CORRECTIVE ACTION PROGRAM/REMOVAL ACTION

G M P O W E R T R A I N B E D F O R D P L A N T B E D F O R D , I N D I A N A

Project Status

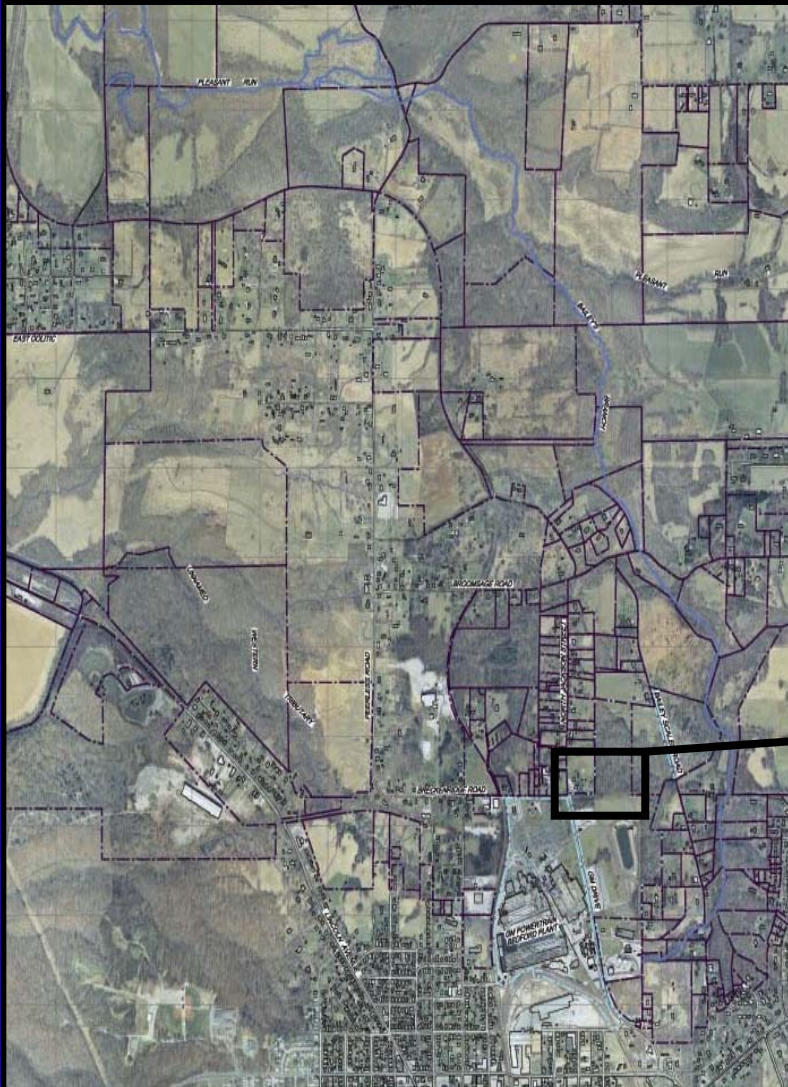
- Upstream Parcels Removal Action Work Plan
 - Excavation is ongoing along the unnamed tributary north of the storm water lagoon and east from the historic outfall.
- Addendum No. 4 outlines updated verification sampling procedures for excavation sidewall sampling; samples will be collected at 5-foot intervals at approximately 25-foot spacing along the creek bed.
- Parcels 3 – 6, east of Bailey Scales Road, have been fully excavated and backfilling with clean fill is ongoing.
- Silt fences for new fill are up, seeding is complete, and erosion controls are being installed.
- Parcel 401 excavation and backfilling has been completed.



STATUS OF CERCLA REMOVAL ACTION

RCRA CORRECTIVE ACTION PROGRAM/REMOVAL ACTION

G M P O W E R T R A I N B E D F O R D P L A N T B E D F O R D , I N D I A N A



Parcel 401





STATUS OF CERCLA REMOVAL ACTION REMOVAL ACTIVITIES

RCRA CORRECTIVE ACTION PROGRAM/REMOVAL ACTION

G M P O W E R T R A I N B E D F O R D P L A N T B E D F O R D , I N D I A N A

Parcel 401 Progression of cleanup





STATUS OF CERCLA REMOVAL ACTION REMOVAL ACTIVITIES

RCRA CORRECTIVE ACTION PROGRAM/REMOVAL ACTION

G M P O W E R T R A I N B E D F O R D P L A N T B E D F O R D , I N D I A N A

Parcel 401





STATUS OF CERCLA REMOVAL ACTION REMOVAL ACTIVITIES

RCRA CORRECTIVE ACTION PROGRAM/REMOVAL ACTION

G M P O W E R T R A I N B E D F O R D P L A N T B E D F O R D , I N D I A N A

Area North of AOI 4





STATUS OF CERCLA REMOVAL ACTION REMOVAL ACTIVITIES

RCRA CORRECTIVE ACTION PROGRAM/REMOVAL ACTION

G M P O W E R T R A I N B E D F O R D P L A N T B E D F O R D , I N D I A N A

Parcels 3 – 12
East of Outfall 002





STATUS OF CERCLA REMOVAL ACTION REMOVAL ACTIVITIES

RCRA CORRECTIVE ACTION PROGRAM/REMOVAL ACTION

G M P O W E R T R A I N B E D F O R D P L A N T B E D F O R D , I N D I A N A



Restoration of
culvert under Bailey
Scales Road





STATUS OF CERCLA REMOVAL ACTION REMOVAL ACTIVITIES

RCRA CORRECTIVE ACTION PROGRAM/REMOVAL ACTION

G M P O W E R T R A I N B E D F O R D P L A N T B E D F O R D , I N D I A N A



View looking west of
Bailey Scales Road –
post excavation but
prior to restoration

View looking east of
Bailey Scales Road –
during excavation
activities





STATUS OF CERCLA REMOVAL ACTION REMOVAL ACTIVITIES

RCRA CORRECTIVE ACTION PROGRAM/REMOVAL ACTION

G M P O W E R T R A I N B E D F O R D P L A N T B E D F O R D , I N D I A N A

East of Bailey Scales Road





STATUS OF CERCLA REMOVAL ACTION REMOVAL ACTIVITIES

RCRA CORRECTIVE ACTION PROGRAM/REMOVAL ACTION

G M P O W E R T R A I N B E D F O R D P L A N T B E D F O R D , I N D I A N A

East of Bailey Scales Road





STATUS OF CERCLA REMOVAL ACTION REMOVAL ACTIVITIES

RCRA CORRECTIVE ACTION PROGRAM/REMOVAL ACTION

G M P O W E R T R A I N B E D F O R D P L A N T B E D F O R D , I N D I A N A

Placement of backfill





STATUS OF CERCLA REMOVAL ACTION REMOVAL ACTIVITIES

RCRA CORRECTIVE ACTION PROGRAM/REMOVAL ACTION

G M P O W E R T R A I N B E D F O R D P L A N T B E D F O R D , I N D I A N A

Backfill Sources

- Potential backfill sources are evaluated prior to accepting any fill material.
- Backfill soils are tested on a routine basis prior to acceptance.



TABLE
CRA ANALYTICAL RESULTS SUMMARY
PROGRAM FARM
BORROW MATERIAL
TOPSOIL AND COMMON FILL SOURCES
BEDFORD, IN

Page 4 of 5

CRA Sample Location Identification:	SE2800	SE2804	SE2805	SE2806	SE2807	SE2807	SE2809	SE2809
Sample ID:	S-402763.PF-SE2800	S-409643.BF-SE2804	S-401043.BF-SE2805	S-401043.BF-SE2806	S-409643.BF-SE2807	S-409643.BF-SE2807	S-409643.BF-SE2809	S-401043.BF-SE2809
Sample Date:	4/22/81	9/22/83	9/22/83	9/22/83	9/22/83	9/22/83	9/22/83	9/22/83
Sample Depth (ft):	0-4.0	0-4.0	0-4.0	0-4.0	0-4.0	0-4.0	0-4.0	0-4.0
Comments:	Stackpile Sample	Stackpile Sample	Topsoil Sample	Stackpile Sample	Topsoil Sample	Topsoil Sample	Topsoil Sample	Topsoil Sample
Parameters	Unit	31.7	11.5	10.0	14.4	30.0	35.5	17.0
Chlorine Total	mg/kg	107	60	54	67	63	69	12.0
Cobalt	mg/kg	6.5	7.0	6.7	7.1	8.1	6.3	6.1
Copper	mg/kg	ND(140)	ND(140)	ND(140)	ND(140)	ND(140)	ND(140)	ND(140)
Cyanide (total)	mg/kg	1450	1270	1270	1800	1600	1800	1000
Iron	mg/kg	131	119	110	144	149	134	136
Lead	mg/kg	969	782	548	1088	987	966	1008
Manganese	mg/kg	806(3)	882(1)	818(1)	808(1)	808(1)	882(1)	884(1)
Mercury	mg/kg	126	113	114	87	121	101	133
Nickel	mg/kg	ND(140)	ND(140)	ND(140)	ND(140)	ND(140)	ND(140)	ND(140)
Selenium	mg/kg	ND(12)	ND(12)	ND(12)	ND(12)	ND(12)	ND(12)	ND(12)
Silver	mg/kg	0.01	0.01	0.01	0.01	0.01	0.01	0.01
Thallium	mg/kg	21.0	18.1	18.4	18.2	20.1	18.1	25.1
Vanadium	mg/kg	394	359	287	382	404	341	44.0
Residuals								
2,3,7,8-TCDF (Mean)	ug/kg	ND(25)	ND(25)	ND(25)	ND(25)	ND(25)	ND(25)	ND(25)
2,4-Dichlorophenoxyacetic acid (2,4-D)	ug/kg	ND(100)	ND(97)	ND(98)	ND(92)	ND(96)	ND(100)	ND(96)
PCBs								
Aroclor 1016 (PCB 305)	ug/kg	ND(40)	ND(40)	ND(40)	ND(40)	ND(40)	ND(40)	ND(40)
Aroclor 1221 (PCB 1221)	ug/kg	ND(40)	ND(40)	ND(40)	ND(40)	ND(40)	ND(40)	ND(40)
Aroclor 1248 (PCB 1248)	ug/kg	ND(40)	ND(40)	ND(40)	ND(40)	ND(40)	ND(40)	ND(40)
Aroclor 1254 (PCB 1254)	ug/kg	ND(40)	ND(40)	ND(40)	ND(40)	ND(40)	ND(40)	ND(40)
Aroclor 1260 (PCB 1260)	ug/kg	ND(40)	ND(40)	ND(40)	ND(40)	ND(40)	ND(40)	ND(40)
Aroclor 1268 (PCB 1268)	ug/kg	ND(40)	ND(40)	ND(40)	ND(40)	ND(40)	ND(40)	ND(40)
Aroclor 1281 (PCB 1281)	ug/kg	ND(40)	ND(40)	ND(40)	ND(40)	ND(40)	ND(40)	ND(40)
Pesticides								
4-E DDE	ug/kg	ND(23)	ND(23)	ND(23)	ND(19)	ND(19)	ND(23)	ND(20)
4-E DDE	ug/kg	ND(23)	ND(23)	ND(23)	ND(19)	ND(19)	ND(23)	ND(20)
4-E DDT	ug/kg	ND(23)	ND(23)	ND(23)	ND(19)	ND(19)	ND(23)	ND(20)
4-E DDT	ug/kg	ND(23)	ND(23)	ND(23)	ND(19)	ND(19)	ND(23)	ND(20)
alpha-BHC	ug/kg	ND(23)	ND(23)	ND(23)	ND(19)	ND(19)	ND(23)	ND(20)
alpha-Chlordane	ug/kg	ND(23)	ND(23)	ND(23)	ND(19)	ND(19)	ND(23)	ND(20)
beta-BHC	ug/kg	ND(23)	ND(23)	ND(23)	ND(19)	ND(19)	ND(23)	ND(20)
delta-BHC	ug/kg	ND(23)	ND(23)	ND(23)	ND(19)	ND(19)	ND(23)	ND(20)
Endosulfan	ug/kg	ND(23)	ND(23)	ND(23)	ND(19)	ND(19)	ND(23)	ND(20)
Endosulfan1	ug/kg	ND(23)	ND(23)	ND(23)	ND(19)	ND(19)	ND(23)	ND(20)

8/4/2004



STATUS OF CERCLA REMOVAL ACTION REMOVAL ACTIVITIES – SITE WORK

RCRA CORRECTIVE ACTION PROGRAM/REMOVAL ACTION

G M P O W E R T R A I N B E D F O R D P L A N T B E D F O R D , I N D I A N A



Verification samples
taken on sidewalls





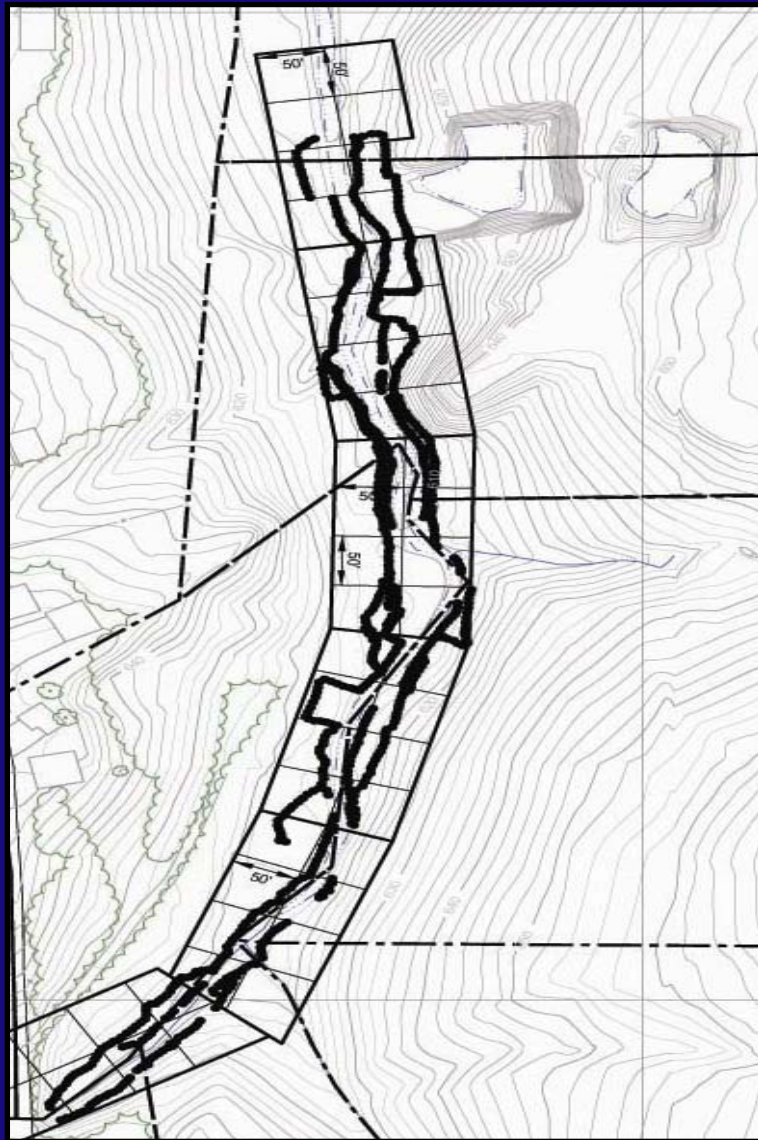
STATUS OF CERCLA REMOVAL ACTION REMOVAL ACTIVITIES – SITE WORK

RCRA CORRECTIVE ACTION PROGRAM/REMOVAL ACTION

G M P O W E R T R A I N B E D F O R D P L A N T B E D F O R D , I N D I A N A



Verification samples
taken on sidewalls





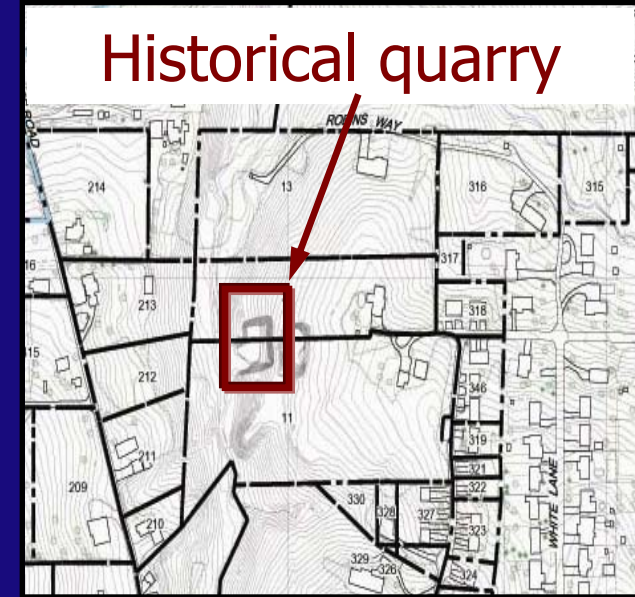
STATUS OF CERCLA REMOVAL ACTION REMOVAL ACTIVITIES

RCRA CORRECTIVE ACTION PROGRAM/REMOVAL ACTION

G M P O W E R T R A I N B E D F O R D P L A N T B E D F O R D , I N D I A N A

Project Status

- **Parcels 11/12 Lower Quarry**
 - One historical quarry along Bailey's Branch Creek needs to be excavated because of historical overflow from the creek.
 - A temporary berm may be constructed between the lower quarry and the creek channel if the quarry cleanup takes longer than cleanup in the adjacent creek.
 - The quarry will be dewatered and accumulated sediment and soil will be removed to Removal Action criteria, characterized, and disposed.
 - An Addendum to the Upstream Parcel Work Plan is being drafted and will be submitted to the U.S. EPA for approval.





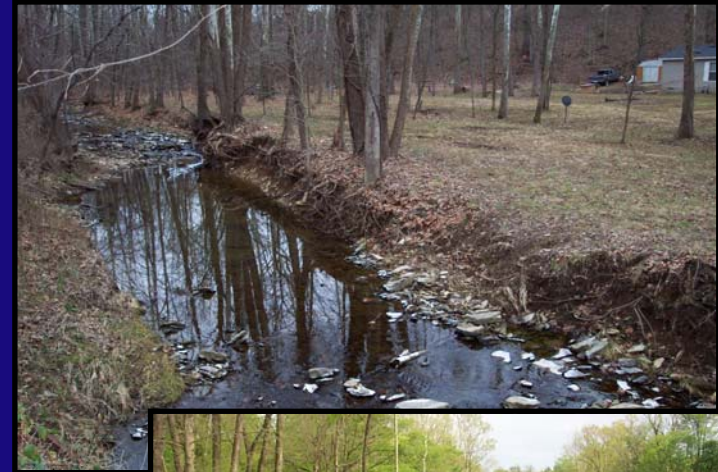
STATUS OF CERCLA REMOVAL ACTION REMOVAL ACTIVITIES

RCRA CORRECTIVE ACTION PROGRAM/REMOVAL ACTION

G M P O W E R T R A I N B E D F O R D P L A N T B E D F O R D , I N D I A N A

Project Status

- Parcel 22 Removal Action Work Plan
 - Cleanup has not reached this parcel.





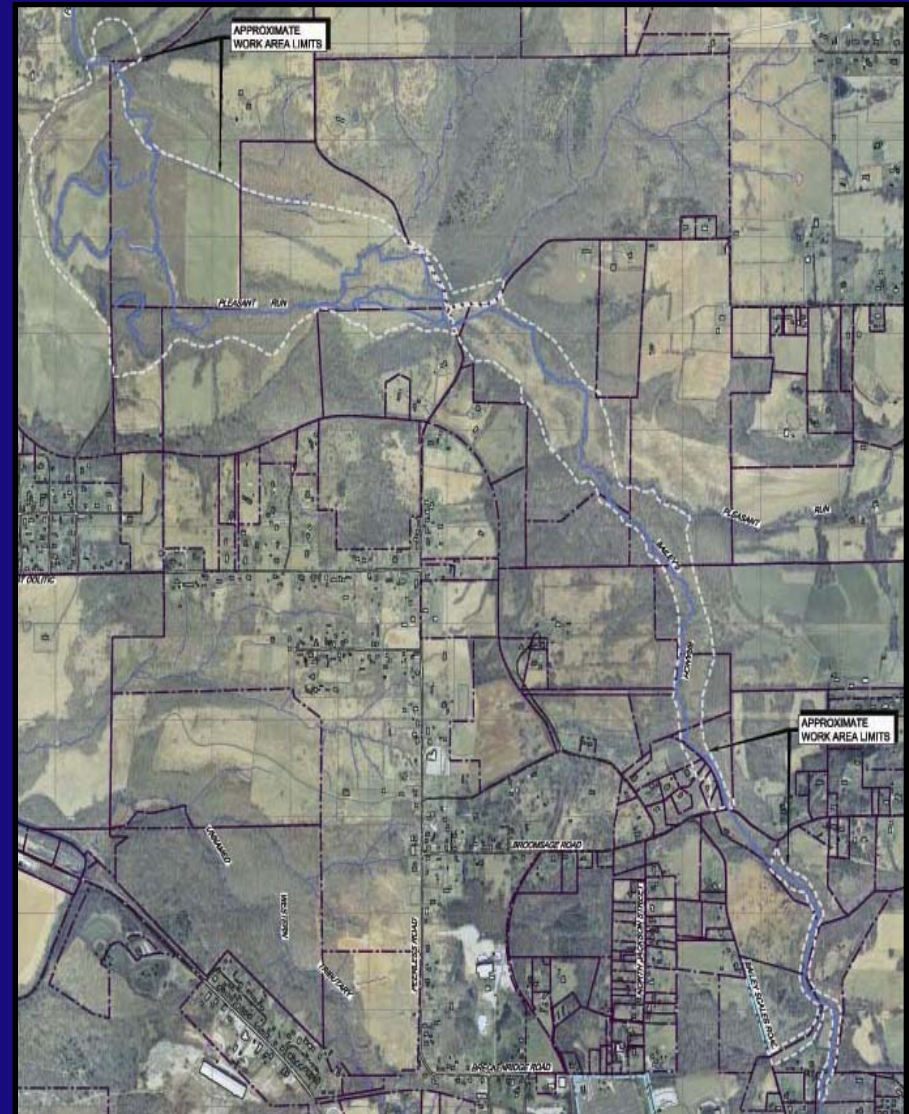
STATUS OF CERCLA REMOVAL ACTION REMOVAL ACTIVITIES

RCRA CORRECTIVE ACTION PROGRAM/REMOVAL ACTION

G M P O W E R T R A I N B E D F O R D P L A N T B E D F O R D , I N D I A N A

Project Status

- Downstream Parcels Removal Action Work Plan
 - Removal activities are anticipated to begin later this year downstream of Broomsage Road.
 - Bid documents have been received from potential contractors.
 - There is one remaining access agreement that has not been signed for a parcel at the far end of the cleanup.





STATUS OF CERCLA REMOVAL ACTION REMOVAL ACTIVITIES

RCRA CORRECTIVE ACTION PROGRAM/REMOVAL ACTION

G M P O W E R T R A I N B E D F O R D P L A N T B E D F O R D , I N D I A N A

Swallet





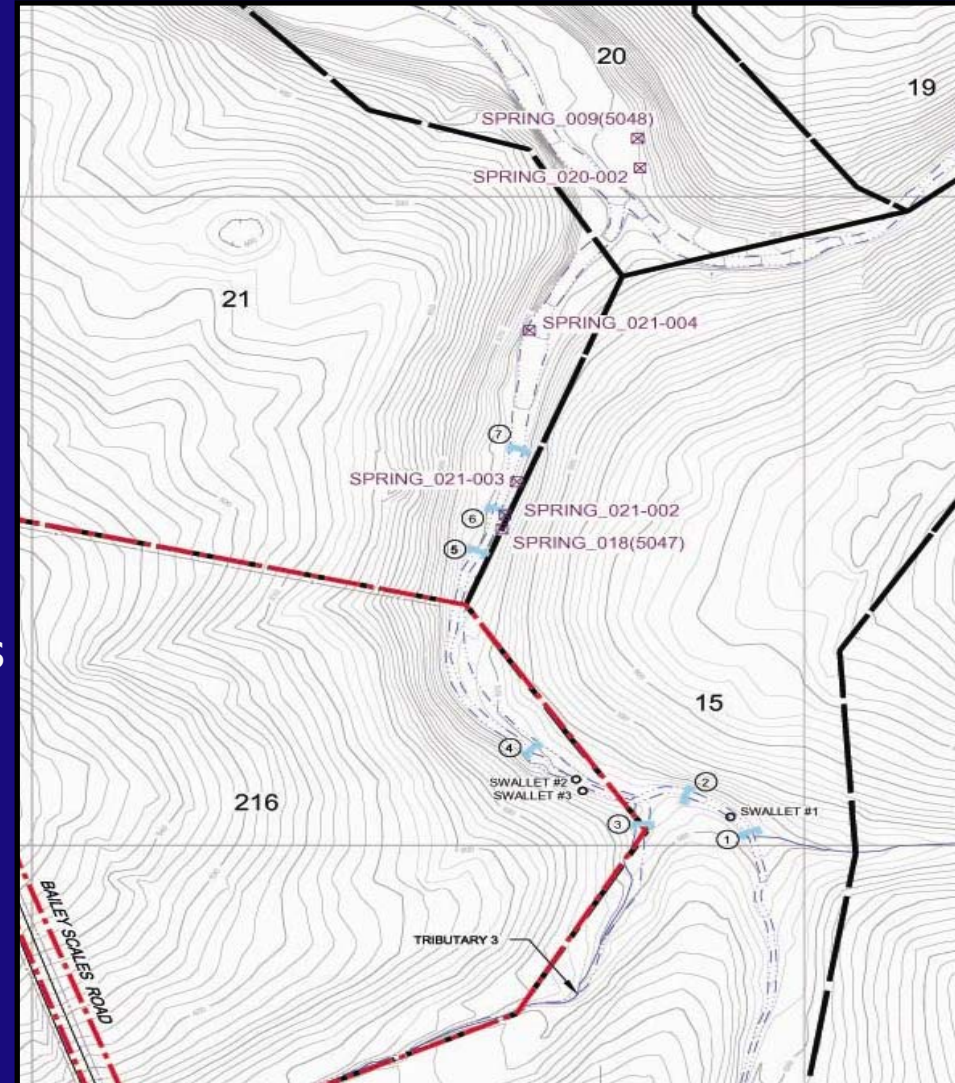
STATUS OF CERCLA REMOVAL ACTION REMOVAL ACTIVITIES

RCRA CORRECTIVE ACTION PROGRAM/REMOVAL ACTION

G M P O W E R T R A I N B E D F O R D P L A N T B E D F O R D , I N D I A N A

Mini-Dye Tracer Study along Creek Swallets

- Three swallets were identified within the stream channel downstream of the current cleanup activities.
- Work plan was prepared which proposed a dye tracer test and stream flow study in the vicinity of the swallets and springs (where it is believed the stream resurfaces).
 - Two tests have been completed using red dye.
 - Seven wiers were installed to evaluate flow during the study.





STATUS OF CERCLA REMOVAL ACTION REMOVAL ACTIVITIES

RCRA CORRECTIVE ACTION PROGRAM/REMOVAL ACTION

G M P O W E R T R A I N B E D F O R D P L A N T B E D F O R D , I N D I A N A

Swallet dye tracer study





STORMWATER MANAGEMENT

RCRA CORRECTIVE ACTION PROGRAM/REMOVAL ACTION

G M P O W E R T R A I N B E D F O R D P L A N T B E D F O R D , I N D I A N A





STORMWATER MANAGEMENT

RCRA CORRECTIVE ACTION PROGRAM/REMOVAL ACTION

G M P O W E R T R A I N B E D F O R D P L A N T B E D F O R D , I N D I A N A





STORMWATER MANAGEMENT

RCRA CORRECTIVE ACTION PROGRAM/REMOVAL ACTION

G M P O W E R T R A I N B E D F O R D P L A N T B E D F O R D , I N D I A N A

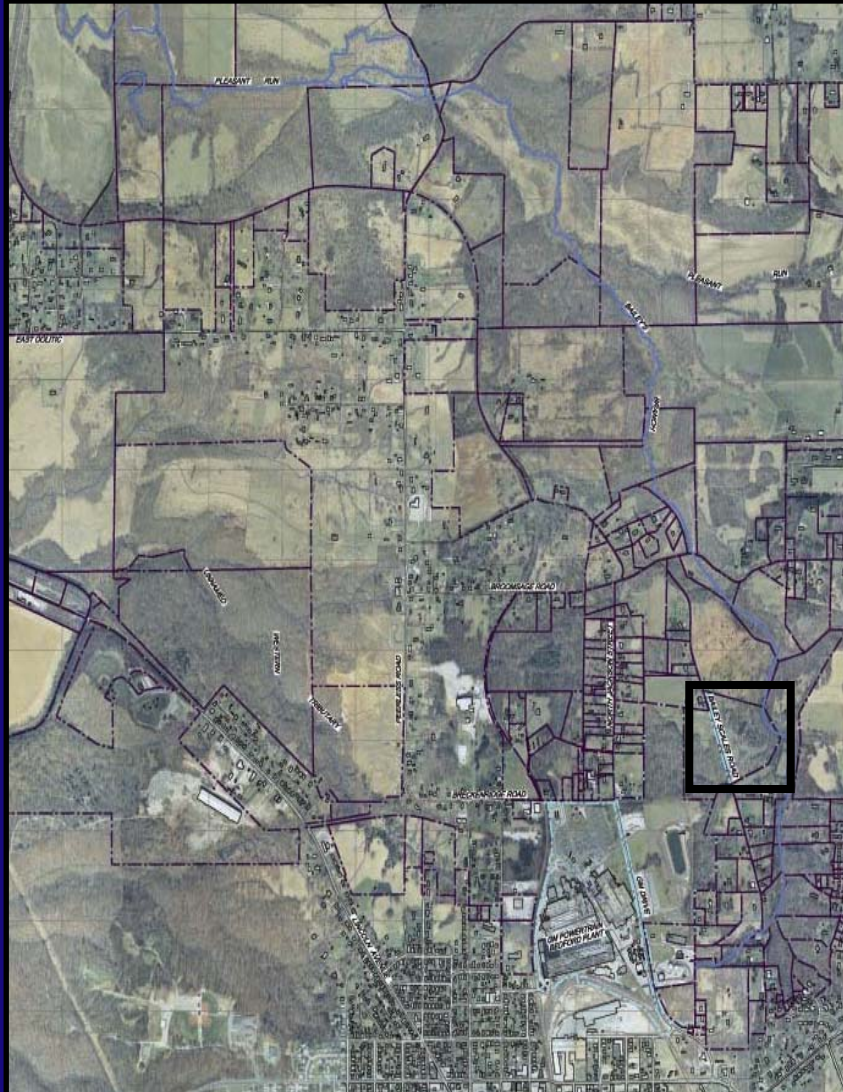




STATUS OF CERCLA REMOVAL ACTION

RCRA CORRECTIVE ACTION PROGRAM/REMOVAL ACTION

GM POWERTRAIN BEDFORD PLANT BEDFORD, INDIANA



Parcel 216



STATUS OF CERCLA REMOVAL ACTION

RCRA CORRECTIVE ACTION PROGRAM/REMOVAL ACTION

G M P O W E R T R A I N

B E D F O R D

P L A N T

B E D F O R D ,

I N D I A N A

Parcel 216 – Grading for the modular tank





STATUS OF CERCLA REMOVAL ACTION

RCRA CORRECTIVE ACTION PROGRAM/REMOVAL ACTION

G M P O W E R T R A I N B E D F O R D P L A N T B E D F O R D , I N D I A N A

Typical Modular Tank Structure





STATUS OF CERCLA REMOVAL ACTION

RCRA CORRECTIVE ACTION PROGRAM/REMOVAL ACTION

G M P O W E R T R A I N B E D F O R D P L A N T B E D F O R D , I N D I A N A

Project Status

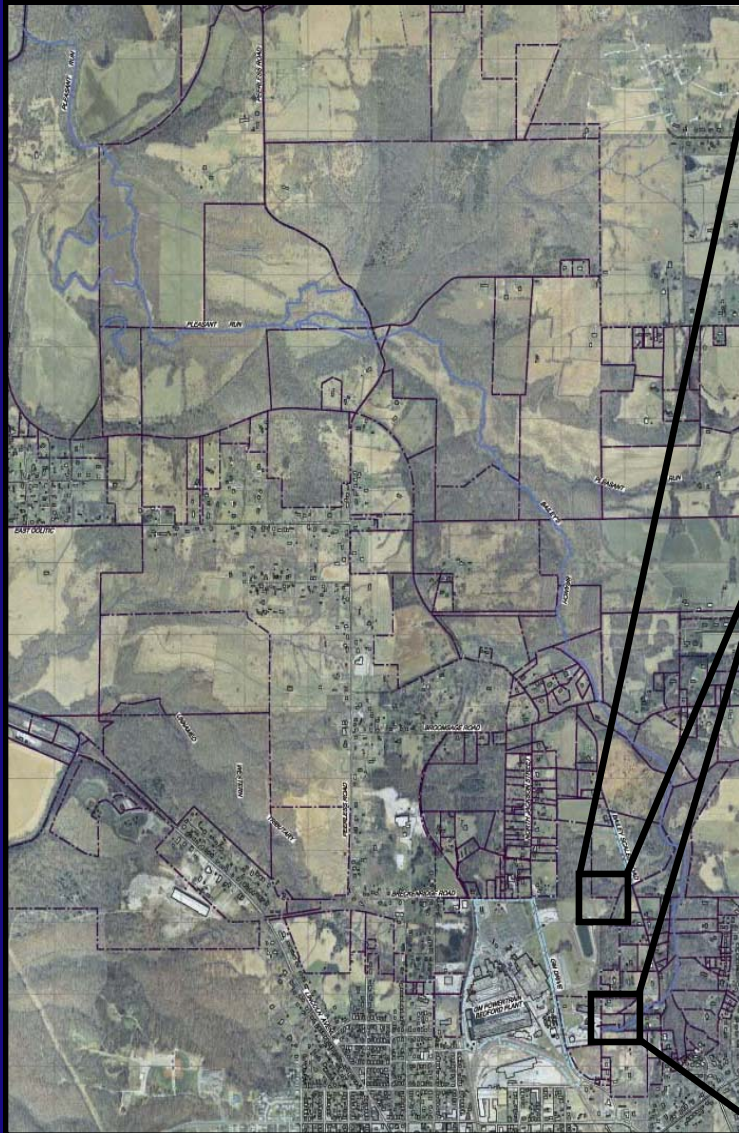
- Site Source Control (SSC) Work Plan
 - The SSC Work Plan was approved November 11, 2003.
 - Currently installing seep controls near Outfall 002 and at AOI 4. Additional seep/spring controls will be added as identified during removal action.
 - Addendum No. 1 to the SSC Work Plan was approved by the U.S. EPA on April 21, 2004.
 - Installed cast-in place concrete foundation and containment walls in Trench 1 & 2;
 - Installed the 6-inch HDPE underdrain system;
 - Filter fabric has been placed over the gravel and geogrid has been placed along the sidewalls;
 - Placement of ≥ 1 foot of compacted clay over filter fabric; and
 - Began construction of the containment inlet structure.



STATUS OF CERCLA REMOVAL ACTION REMOVAL ACTIVITIES

RCRA CORRECTIVE ACTION PROGRAM/REMOVAL ACTION

G M P O W E R T R A I N B E D F O R D P L A N T B E D F O R D , I N D I A N A



Site
Source
Control





STATUS OF CERCLA REMOVAL ACTION SITE SOURCE CONTROL

RCRA CORRECTIVE ACTION PROGRAM/REMOVAL ACTION

G M P O W E R T R A I N B E D F O R D P L A N T B E D F O R D , I N D I A N A



- Site Source Control North of AOI 4
 - Installation of the primary in-ground components of the forcemain and electrical conduit.





STATUS OF CERCLA REMOVAL ACTION SITE SOURCE CONTROL

RCRA CORRECTIVE ACTION PROGRAM/REMOVAL ACTION

G M P O W E R T R A I N B E D F O R D P L A N T B E D F O R D , I N D I A N A

- Site Source Control east of the historical outfall





STATUS OF CERCLA REMOVAL ACTION

RCRA CORRECTIVE ACTION PROGRAM/REMOVAL ACTION

G M P O W E R T R A I N B E D F O R D P L A N T B E D F O R D , I N D I A N A

Road Repair





STATUS OF CERCLA REMOVAL ACTION

RCRA CORRECTIVE ACTION PROGRAM/REMOVAL ACTION

G M P O W E R T R A I N B E D F O R D P L A N T B E D F O R D , I N D I A N A



Foam





STATUS OF CERCLA REMOVAL ACTION

RCRA CORRECTIVE ACTION PROGRAM/REMOVAL ACTION

G M P O W E R T R A I N B E D F O R D P L A N T B E D F O R D , I N D I A N A

Indiana Bat Evaluation

- Indiana Bat is an endangered species.
- The final Biological Assessment was submitted to USFWS on June 18, 2004.





STATUS OF CERCLA REMOVAL ACTION

RCRA CORRECTIVE ACTION PROGRAM/REMOVAL ACTION

G M P O W E R T R A I N B E D F O R D P L A N T B E D F O R D , I N D I A N A

Archeological Assessment

- Archeological Assessment was previously performed for areas in proximity to the GM Bedford Powertrain Plant as part of the RCRA Permit.
- An Archaeological Contingency Plan has been developed in the event that artifacts are uncovered during the removal work.



STATUS OF CERCLA REMOVAL ACTION

RCRA CORRECTIVE ACTION PROGRAM/REMOVAL ACTION

G M P O W E R T R A I N B E D F O R D P L A N T B E D F O R D , I N D I A N A

Activities for 2004

- Continue progression of cleanup downstream along Bailey's Branch to Pleasant Run Creek.
 - Tree removal has been completed downstream to near the Peerless Road Bridge.
 - Cleanup activities are currently focused east of Bailey Scales Road moving north along the creek bed.
 - Restoration activities will be implemented on Parcels as cleanup is completed.



- The plan for properties purchased by GM.
 - Properties are being listed through local real estate brokers.
 - Properties will not be sold if they do not meet cleanup standard.
 - Properties that meet the cleanup standard will be listed through local real estate brokers .
 - Properties with structures that are in disrepair may be refurbished prior to being listed through local real estate brokers.
 - Properties with structure that are unsalvageable will be demolished.
 - Donation of some of these properties are being considered.



PROPERTY ISSUES

RCRA CORRECTIVE ACTION PROGRAM/REMOVAL ACTION

G M P O W E R T R A I N B E D F O R D P L A N T B E D F O R D , I N D I A N A

Demolition





- North Jackson Street Open House.
 - The Open House was held on June 10, 2004.
 - There is a concentrated effort enhancing these properties through refurbishment.
 - There is an emphasis on local contractors and labor for this revitalization effort.
- Donated 2 duplexes to Charity Chapel.
- Working with Habitat for Humanity



COMMUNITY RELATIONS ACTIVITIES

RCRA CORRECTIVE ACTION PROGRAM/REMOVAL ACTION

G M P O W E R T R A I N B E D F O R D P L A N T B E D F O R D , I N D I A N A

- Meetings with select residents to discuss access issues.
- Community meetings are held on a quarterly basis
 - The last meetings were on April 28 and 29, 2004.
 - Presentations have been and will continue to be posted to the website.
 - The current meetings are scheduled for:
 - August 4, 2004, project update meeting with residents in proximity to creek;
 - August 5, 2004, project update meeting with the general public; and
 - The next community are proposed for November 2004. The style of presentation will change from former presentation to an informal topic-specific information booths staffed by project-team members.
- The next project update meeting with the Community Liaison Panel is scheduled for August 6, 2004.
- The next Fact Sheet issued August/September 2004 timeframe.



COMMUNITY RELATIONS ACTIVITIES

RCRA CORRECTIVE ACTION PROGRAM/REMOVAL ACTION

G M P O W E R T R A I N B E D F O R D P L A N T B E D F O R D , I N D I A N A

- Project website at:
www.BedfordPowertrainCorrectiveAction.com
- Quarterly Community Relations Meetings now available on the website
- GM Community Relations Contact person is Becki Akers. The toll-free number remains (866)223-0856
- Public Information Repository (GM Plant) - Currently by appointment.
- Public Information Repository (Library)
- Community Liaison Panel (CLP)
- Periodic information sessions
- Periodic Project Fact Sheets (eight issued to date)



QUESTIONS AND ANSWERS

RCRA CORRECTIVE ACTION PROGRAM/REMOVAL ACTION

G M P O W E R T R A I N B E D F O R D P L A N T B E D F O R D , I N D I A N A

Q & A SESSION