



2014 RCRA Corrective Action June 2, 2015

GM CET (formerly Powertrain) Bedford Facility, Bedford, Indiana

Project Fact Sheet 40

This is the fortieth Project Fact Sheet that has been prepared to provide the community with information regarding activities being performed at the Site. This Fact Sheet discusses cleanup activities being managed by General Motors LLC (GM) during the first half of 2015.

Project Background

A new RCRA Corrective Action (CA) Administrative Order on Consent (AOC) was signed on August 4, 2014. The CA being conducted at the GM CET Bedford Facility, and remaining works off-Facility in the creek, will now be conducted in accordance with the terms of the RCRA CA AOC in addition to the Removal Action AOC.

Facility Update

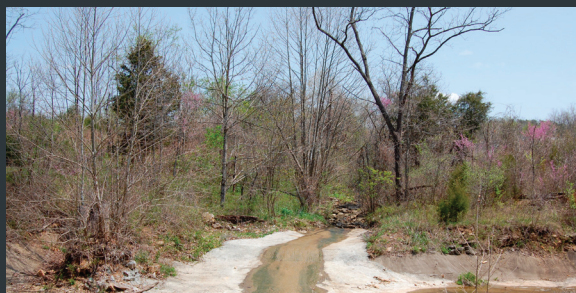
Within the East Plant Area at the GM Plant, construction of the vault and low permeability cover system was completed in 2012. Construction Certification Reports for the East Plant Area Vault, the West Plant Area and the East Plant Area Cover Systems were submitted to U.S. EPA on January 8, 2014, November 12, 2014, and March 2, 2015, respectively. Responses to comments on each report have been submitted to U.S. EPA and final revisions to the reports are pending. The cover systems continue to be monitored.

Work continued on the design and finalization of the alignment of the perimeter groundwater trench collection system, which will be installed along the downgradient (north and east) side of the East Plant Area. GM has

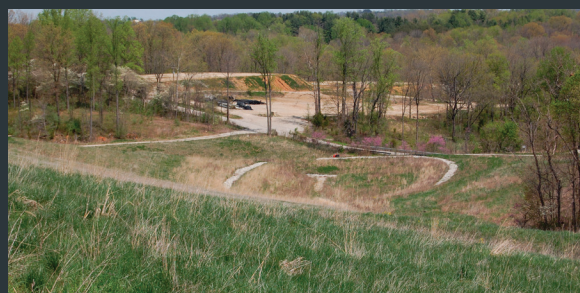
acquired all properties on Barlow Lane (immediately east of the Plant) where the proposed groundwater collection trench will be installed and had portions of the properties rezoned for the trench and a groundwater treatment plant. A work plan for a pilot trench study was submitted to U.S. EPA on December 2, 2014 and a few rounds of EPA comments have been or are being responded to. Once approval of the Pilot design has been given, GM anticipates mobilization to the Site to initiate construction by July/August 2015. A pre-trench will be first excavated to the top of rock along the trench alignment and then a trenching machine capable of the needed depths in rock will be brought in to cut the bedrock trench. A perforated collection pipe will be laid in the bottom of the trench and then the trench will be filled with a permeable material like sand or gravel. As part of the trench collection project, the new groundwater treatment is also being constructed east of the Bedford Facility. This plant will be connected to the Trench groundwater collection system and will be located in the Barlow Lane area.

Off-Site Activities Update

Water from Spring 018 continued to be treated and discharged until June 19, 2013. At that time, with approval from the U.S. EPA and the Indiana Department



CONCRETE REPAIR COMPLETED IN 2014



OVERLOOKING THE PROPOSED PILOT TRENCH ALIGNMENT



RESTORATION WEST OF BAILEY SCALES ROAD



SPRING 018 CONTAINMENT BERM

of Environmental Management (IDEM) based on favorable testing results, the treatment system for the spring water was placed into standby mode, with ongoing spring water monitoring to ensure PCBs met the criteria. The demobilization of the water treatment system was initiated in March 2014 following approval of the plan by U.S. EPA on March 10, 2014. The spring continues to be sampled on a monthly basis, following a sampling and contingency plan approved by U.S. EPA.

Soil and sediment removal to meet the approved project cleanup criteria for the floodplain areas in the watershed was completed in 2011, with the final restoration work downstream (west) of the Peerless Road Bridge within Pleasant Run Creek watershed completed in 2014. The Construction Certification Report of Downstream Parcels Removal Action was submitted on December 12, 2014.

Roads Update

Project related truck activity along Breckenridge and Peerless Road has been minimal for the last year, as GM had completed the East Plant work and the restoration work on the west side of Peerless Road. Remaining work on the Facility will be accessed by on-Facility haul roads and GM Drive. The road activity will pick up during the installation of a new groundwater treatment plant and the Pilot Trench, with traffic directed primarily onto Highway 58 and GM Drive.

Communications Update

A combined neighborhood and public meeting was held on December 10, 2014. The presentation materials for this meeting are posted in the Public Library and, on the GM website at www.BedfordPowertrainCorrectiveAction.com.

The Community Liaison Panel (CLP) also met (Meeting No. 49) on December 10, 2014, as part of an additional communication avenue for the community. CLP meeting minutes from previous meetings have been posted to the project website and in the Public Library.

The next combined neighborhood and public meeting is scheduled for June 10, 2015 at 6:00PM and will be held at the CRA field trailers south of the GM CET Bedford Facility on GM Drive near Fourth Street. The next CLP meeting will also be held on June 10, 2015 at 11:00AM.

The Documents Repository is available for viewing in PDF format on compact discs (CDs) at the Bedford Public Library. The online information repository also continues to be updated and maintained on the GM website, which can be accessed at www.BedfordPowertrainCorrectiveAction.com. A list of new project

documents, submitted to the online information repository since Fact Sheet 38 is provided on this Fact Sheet, below.

To date, this Fact Sheet has been provided to area residents through the U.S. Postal Service and by direct handout at the field trailers and community meetings. If you would like to receive this Fact Sheet through the mail, please contact Katie Kamm at (812) 277-8954 and you will be added to our mailing list.

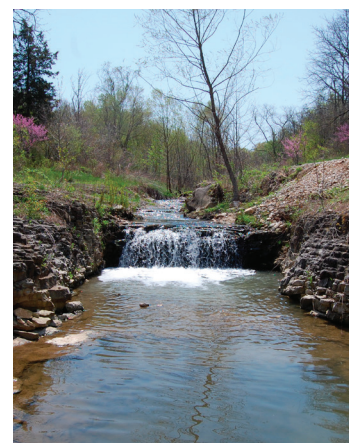
Upcoming Activities Summary

The following is a list of anticipated work to be initiated or completed at the Site and property located off-Site over the next several months:

- Continue monitoring of vegetative cover systems and erosion control.
- Continue monitoring of Spring 18 on a monthly basis.
- Complete additional on-Facility soil sampling for the RCRA Facility Investigation Report.
- Complete additional soil sampling on a properties immediately west of the Plant.
- Continue groundwater monitoring and sampling activities related to the EI CA750.
- Obtain final approvals on the work plan and mobilize for the Pilot Groundwater Collection Trench construction.
- Construct a new Groundwater Treatment Plant for the Pilot Trench groundwater collection system.



TADPOLES IN BAILEY'S BRANCH CREEK



BAILEY'S BRANCH CREEK

Public Access Website at...

www.BedfordPowertrainCorrectiveAction.com

Get up-to-date project information and view project related documents.

The following documents have been submitted to the U.S. EPA and IDEM since Fact Sheet 38 and are available for review on the website and at the Public Library.

- Progress Report 55 – Fourth Quarter 2014
- Progress Report 56 – First Quarter 2015
- Downstream Parcels Removal Action Construction Certification Report
- Pilot Perimeter Groundwater Collection System Study
- AOI 8 Area Groundwater Source Collection System Interim Measure
- East Plant Area Construction Certification Report
- Community Liaison Panel Meeting 48 Minutes

Public Presentation

December 10, 2014

Contact Information

If you would like more information about this project, please contact any of the following:

U.S. EPA
Peter Ramanauskas
for general information and on-site work
Tel: (312) 886-7890

Brad Stimple
for creek cleanup work
Tel: (440) 250-1717

IDEM
Gerald O'Callaghan
Tel: (317) 233-1522

ATSDR (Public Health Agency)
Mark Johnson
Tel: (312) 886-0840

PROJECT INFORMATION AND
TRUCK TRAFFIC COORDINATOR
Katie Kamm
Tel: (812) 277-8954