



GM CET BEDFORD FACILITY BEDFORD, INDIANA

G M C E T B E D F O R D F A C I L I T Y , B E D F O R D , I N D I A N A

Public Information Session June 10, 2015



- Facility located on 152.5 acres and is approximately 1,000,000 square feet of manufacturing footprint
- Approximately 450 employees



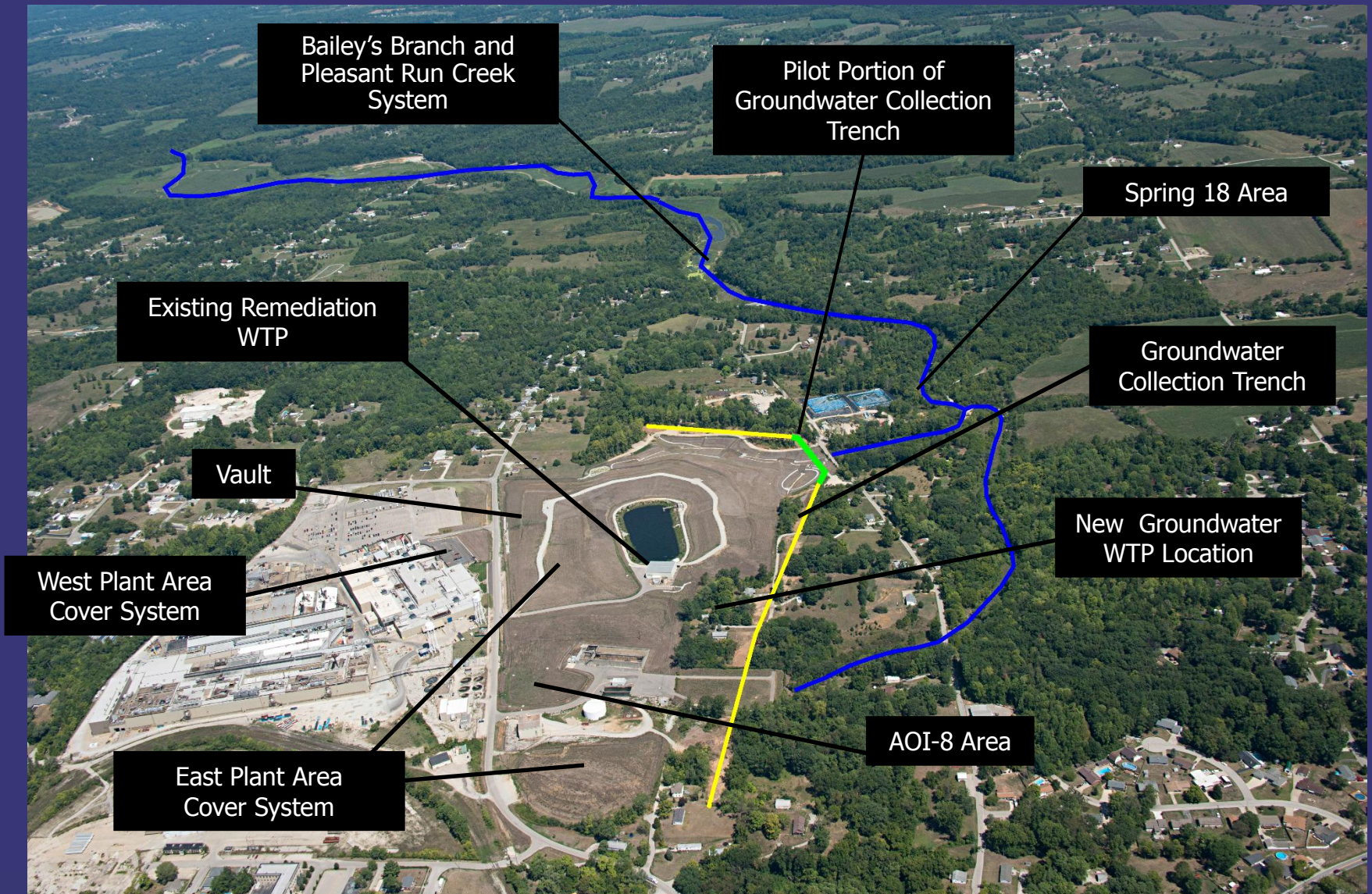
G M C E T B E D F O R D F A C I L I T Y , B E D F O R D , I N D I A N A

- Comprehensive Environmental Response, Compensation, and Liability Act (CERCLA) Removal Action (RA)
 - Bailey's Branch and Pleasant Run PCB cleanup of creek sediments and floodplain soil
 - RA Elements:
 - Control of impacted springs and seeps along creek
 - Removal of floodplain soil to 1.8 ppm and sediment to 1 ppm in the creek (removal is complete)
 - Remedy for large spring on Baileys Branch and monitoring continues
 - Creek and floodplain restoration completed in August 2014
- RCRA Corrective Action
 - GM LLC and USEPA entered into an AOC for those areas which GM LLC is responsible.



REMOVAL ACTION STATUS

G M C E T B E D F O R D F A C I L I T Y , B E D F O R D , I N D I A N A





The map displays a complex network of property boundaries and roads. A prominent green shaded area follows the course of Pleasant Run, indicating the watershed boundary. Roads shown include Pleasant Run Road, Bridge Road, and Pleasant Run Road. Various land parcels are labeled with numbers, and specific locations like 'ONCE BEDFORD PLANT' are marked. The map also shows other water features and infrastructure like 'Pleasant Run' and 'Pleasant Run'.



INSPECTION OF DOWNSTREAM PARCELS

G M C E T B E D F O R D F A C I L I T Y , B E D F O R D , I N D I A N A

- Downstream Monitoring and Maintenance Plan submitted to U.S.EPA on November 7, 2014 – under U.S. EPA review
- Monitoring event conducted May 2015
- Fall monitoring will be scheduled October/November 2015
- Restoration doing well





CREEK REMEDIATION/RESTOATION STATUS WEST OF BAILEY SCALES ROAD

G M C E T B E D F O R D F A C I L I T Y , B E D F O R D , I N D I A N A





CREEK REMEDIATION/RESTOATION STATUS EAST OF BAILEY SCALES ROAD

G M C E T B E D F O R D F A C I L I T Y , B E D F O R D , I N D I A N A





CREEK REMEDIATION/RESTOATION STATUS PARCEL 22

G M C E T B E D F O R D F A C I L I T Y , B E D F O R D , I N D I A N A





CREEK REMEDAITION/RESTOATION STATUS PARCEL 76

G M C E T B E D F O R D F A C I L I T Y , B E D F O R D , I N D I A N A





CREEK REMEDATION/RESTORATION STATUS PARCEL 36

G M C E T B E D F O R D F A C I L I T Y , B E D F O R D , I N D I A N A





WEST PLANT CONSTRUCTION CERTIFICATION REPORT

G M C E T B E D F O R D F A C I L I T Y , B E D F O R D , I N D I A N A

- West Plant Construction Certification Report was approved by U.S.EPA





EAST PLANT CONSTRUCTION CERTIFIATION REPORT

G M C E T B E D F O R D F A C I L I T Y , B E D F O R D , I N D I A N A

- East Plant Construction Certification Report submitted to U.S.EPA on March 2, 2015, still under U.S.EPA review





- Conducted 1st Quarter Cover System Inspection
March 12, 2015
 - Remove tree saplings (completed)
 - Monitor grass growth
 - Repair detention basin washout
 - Repair cracks in the asphalt
- Inspect cover system to determine if additional treatment for weeds is necessary
- 2nd Quarterly Cover System Inspection Scheduled for June 11, 2015



EAST/WEST PLANT MONITORING & MAINTENANCE

G M C E T B E D F O R D F A C I L I T Y , B E D F O R D , I N D I A N A

Remove tree saplings



Repair detention basin washout



Fill asphalt cracks



Monitor sparse areas for growth





VAULT OPERATIONS, MONITORING & MAINTENANCE

G M C E T B E D F O R D F A C I L I T Y , B E D F O R D , I N D I A N A

- Monitoring of the leak detection system and leachate collection systems continues
 - Not enough water to collect monthly samples from the LDS in December 2014 and January through May 2015
- Vault Annual Report to be submitted by July 15, 2015





SSC OPERATION AND MAINTENANCE

G M C E T B E D F O R D F A C I L I T Y , B E D F O R D , I N D I A N A

- Operation of the Site Source Control (SSC) System continues



- SSC water and storm pond water treatment continues
- Continue to address algae fouling –phoslock addition planned for mid-June
- Installed additional bag filters prior to carbon units
- Installed components to backwash filter media using treated groundwater
- Construct new WTP to treat waters generated from the perimeter groundwater trench collection system





- Construct new WTP to treat waters generated from the perimeter groundwater trench collection system
 - WTP Process
 - Above grade equalization
 - Pre-filtration (chemical flocculation or Orival screen filtration)
 - Granular activated carbon filtration
 - Discharge to surface water



ADDITIONAL CREEK WORK

G M C E T B E D F O R D F A C I L I T Y , B E D F O R D , I N D I A N A

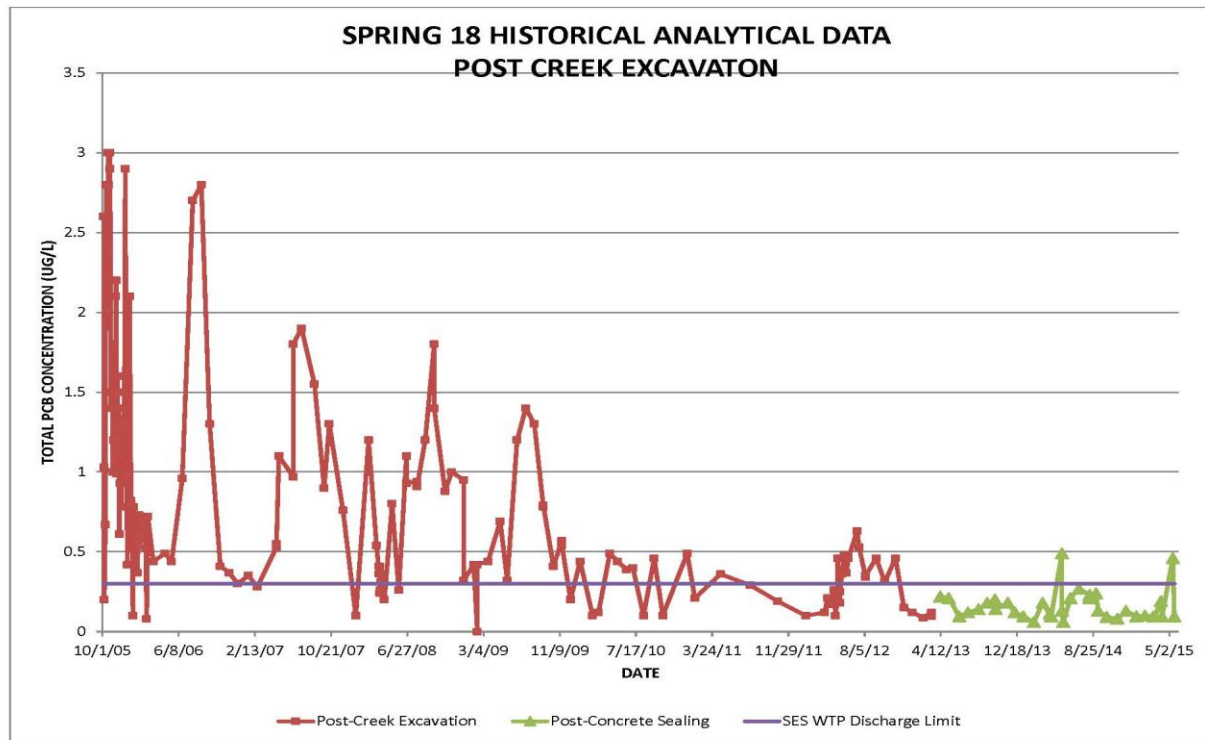




SPRING 18 REMOVAL ACTION MONITORING

G M C E T B E D F O R D F A C I L I T Y , B E D F O R D , I N D I A N A

- Monthly and quarterly opportunistic monitoring continues
- 12-month rolling average (July 2014 - June 2015) = 0.16 ug/L



- Continue to collect monthly quarterly opportunistic samples from Spring 18 and analyze for PCBs
- Potential to seal additional swallet found to be connected to Spring 18

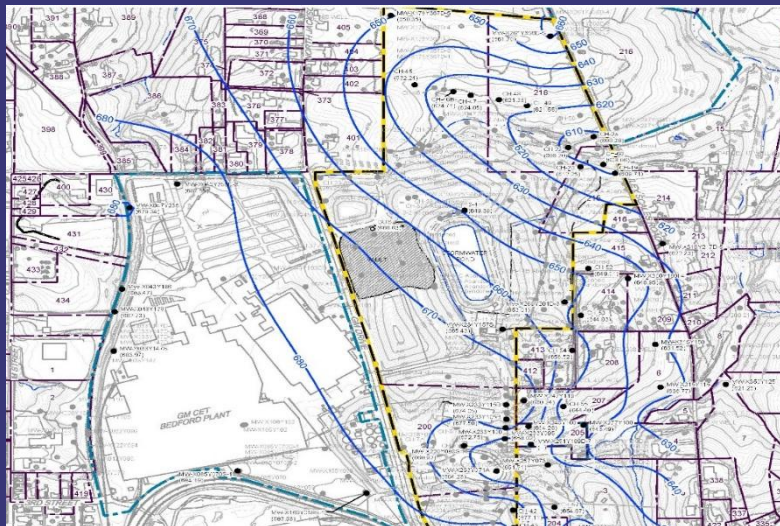




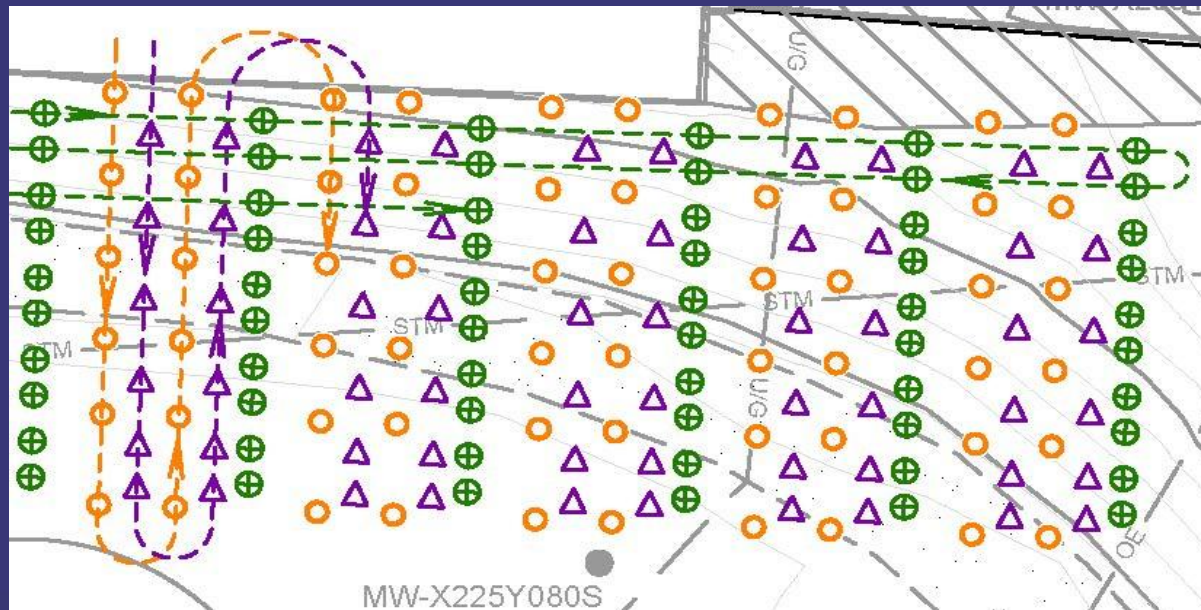
5.L EI CA750 MONITORING

G M C E T B E D F O R D F A C I L I T Y , B E D F O R D , I N D I A N A

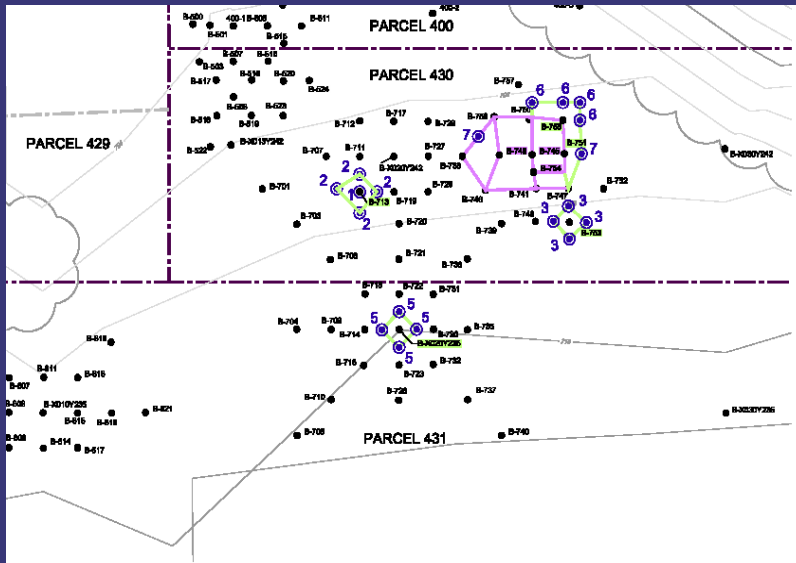
- Quarterly static groundwater level measurements collected in February 2015
- EI CA750 sampling event conducted in November 2014 - results provided to U.S.EPA in January 2015
- EA CA750 sampling event conducted in May 2015 - results are pending
- Groundwater elevations appear to show no significant changes under the Cover System
- Second 2015 event scheduled for November 2015
- EI CA750 or pilot trench monitoring program will continue until a long term groundwater monitoring plan is in place
- Re-assess frequency and/or scope of monitoring



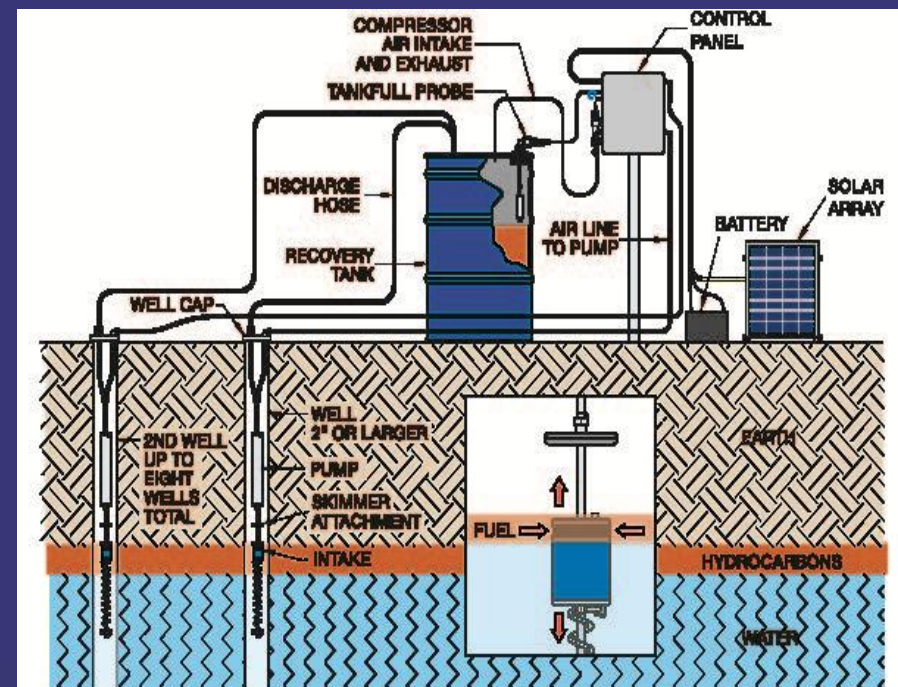
- As a final sampling effort prior to preparing the Investigation Report, incremental surface soil sampling will be conducted in select areas of the East Plant and West Plant Areas
- Sampling will target areas:
 - Not covered by East/West Plant Cover System
 - Not currently paved with hard surface maintained by Plant
 - Areas more prone to potential worker exposures



- Additional boreholes to be advanced to further delineate the proposed prescriptive excavation limit
- USEPA has approved the cleanup criteria to be used



- 2015 Activities to include
 - Implement the AOI 8 Collection System following response to U.S.EPA comments and final approval from U.S.EPA
 - Finalize water profile for disposal of collected oil





PILOT PERIMETER GROUNDWATER TRENCH COLLECTION SYSTEM

G M C E T B E D F O R D F A C I L I T Y , B E D F O R D , I N D I A N A

- Pilot perimeter groundwater trench collection system construction is currently being bid – bids due June 15
- Construct of the pilot perimeter trench to begin in 2015
- Area of the pilot trench and the proposed WTP have been re-zoned
- Portion of Barlow Lane has been vacated
- One additional house and out-buildings to be demolished





- Trench performance will be monitored
- Use experience from completion of pilot trench and trench monitoring to facilitate completion of full trench design





G M C E T B E D F O R D F A C I L I T Y , B E D F O R D , I N D I A N A

- Community meetings have been held on a regular basis, currently meeting twice/year
 - Meetings will continue to be announced in the Bedford Times Mail
 - Presentations have been and will continue to be posted to the website and the library
 - People can always call Katie Kamm with questions: (812) 277-8954
- A CLP meeting was held earlier today
- Information from the presentations and meeting minutes are posted to the website



COMMUNITY RELATIONS ACTIVITIES

G M C E T B E D F O R D F A C I L I T Y , B E D F O R D , I N D I A N A

- Project website at:
<http://www.BedfordPowertrainCorrectiveAction.com>
- Quarterly Community Meetings are available on the website
- Final approved documents can be found on the project website
- Community Liaison Panel (CLP) – members listed in minutes on website
- Periodic information sessions – next meeting likely to be held December 2015.
- Periodic Project Fact Sheets (forty issued to date)
- Project Questions contact Katie Kamm: (812) 277-8954