



GM CETC BEDFORD FACILITY BEDFORD, INDIANA

RCRA CORRECTIVE ACTION/CERCLA REMOVAL ACTION

G M C E T C B E D F O R D F A C I L I T Y , B E D F O R D , I N D I A N A

Public Information Session December 4th, 2013



- Facility located on 152.5 acres and is approximately 1,000,000 square feet of manufacturing footprint
- Approximately 450 employees



REMOVAL ACTION

RCRA CORRECTIVE ACTION/CERCLA REMOVAL ACTION

G M C E T C B E D F O R D F A C I L I T Y , B E D F O R D , I N D I A N A

- Comprehensive Environmental Response, Compensation, and Liability Act (CERCLA) Removal Action (RA)
 - Bailey's Branch and Pleasant Run PCB cleanup of creek sediments and floodplain soil
 - RA Elements:
 - Control of impacted springs and seeps along creeks; and
 - Removal of floodplain soil to 1.8 ppm and sediment to 1 ppm in the creek (removal is complete)
 - Remedy for large spring on Baileys Branch is complete – monitoring continues
 - Restoration will be completed in December 2013



REMOVAL ACTION STATUS

RCRA CORRECTIVE ACTION/CERCLA REMOVAL ACTION

GM CETC BEDFORD FACILITY, BEDFORD, INDIANA

PARCEL 40/81
RESTORATION
WEST OF PEERLESS
ROAD

SPRING 018 SEEP
AND SPRING
RESTORATION
AREA

GROUNDWATER
COLLECTION
TRENCH

COMPLETED COVER
SYSTEM

WEST PLANT AREA

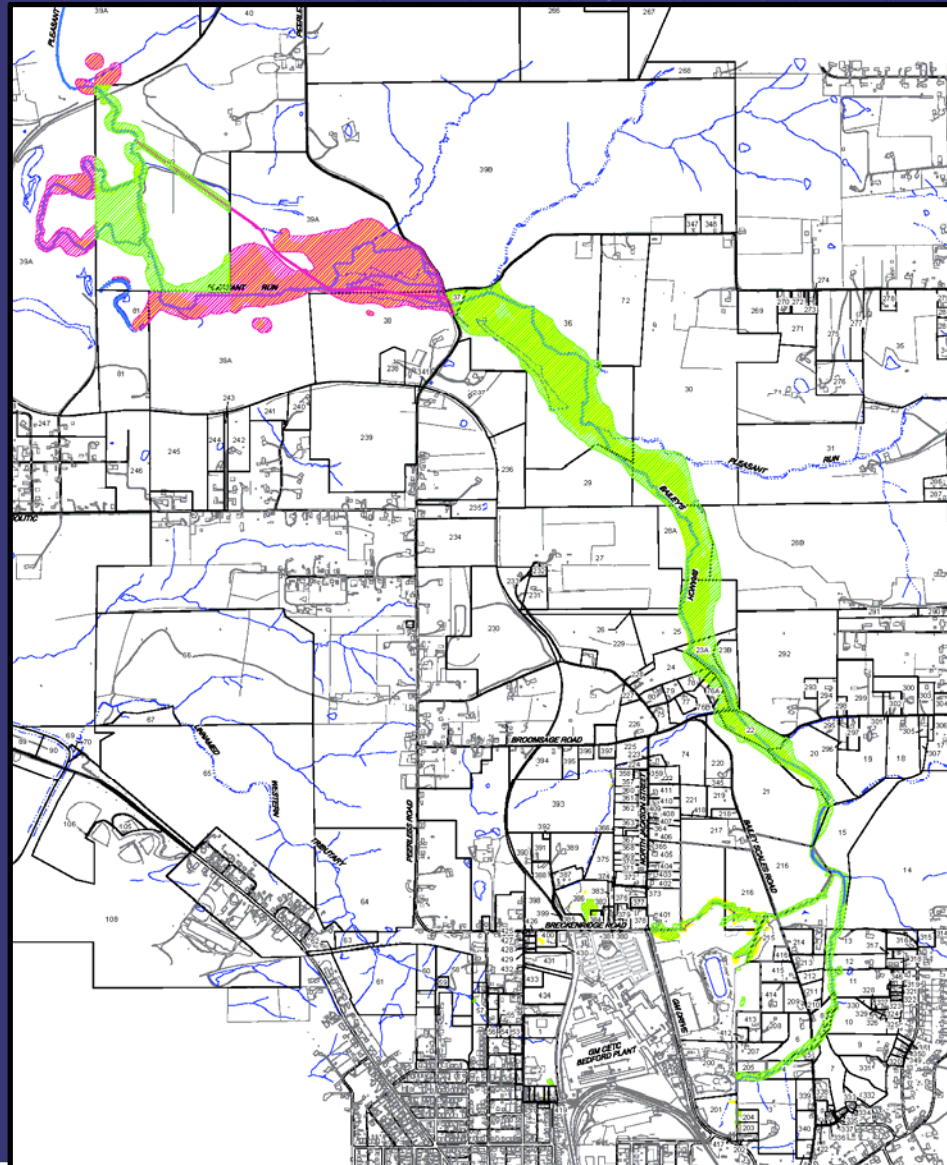
Vault



REMOVAL ACTION STATUS

RCRA CORRECTIVE ACTION/CERCLA REMOVAL ACTION

GM CETC BEDFORD FACILITY, BEDFORD, INDIANA





SPRING 018

RCRA CORRECTIVE ACTION/CERCLA REMOVAL ACTION

GM CETC BEDFORD FACILITY, BEDFORD, INDIANA



December 4, 2013



SPRING 018

RCRA CORRECTIVE ACTION/CERCLA REMOVAL ACTION

G M C E T C B E D F O R D F A C I L I T Y , B E D F O R D , I N D I A N A

- Spring 018 construction of concrete creek lining completed in early 2013
- Monitoring indicated positive results from sealing of swallets
- Collection and treatment of water from spring was suspended on June 18, 2013. Monitoring continues
- Contingency plan sent to EPA September 9, 2013, and additional plans sent to EPA November 5, 2013
- Additional modifications under discussion





SPRING 18

RCRA CORRECTIVE ACTION/CERCLA REMOVAL ACTION

GM CETC BEDFORD FACILITY, BEDFORD, INDIANA





SPRING 018

RCRA CORRECTIVE ACTION/CERCLA REMOVAL ACTION

G M C E T C B E D F O R D F A C I L I T Y , B E D F O R D , I N D I A N A



December 4, 2013



SPRING 018

RCRA CORRECTIVE ACTION/CERCLA REMOVAL ACTION

G M C E T C B E D F O R D F A C I L I T Y , B E D F O R D , I N D I A N A



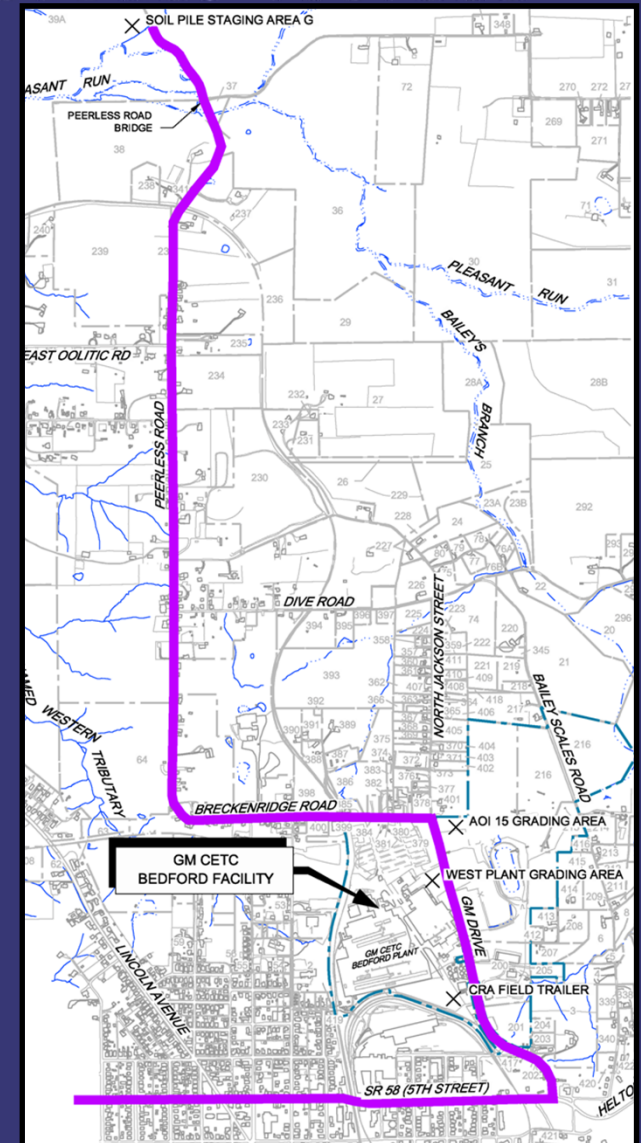


TRUCK TRAFFIC ROUTES

RCRA CORRECTIVE ACTION/CERCLA REMOVAL ACTION

GM CETC BEDFORD FACILITY, BEDFORD, INDIANA

- Restoration related truck traffic for GM LLC work on the creek increased for a few months in July and August 2013 as clean fill material was brought in from outside sources to complete the work





RESTORATION OF PARCELS WEST OF PEERLESS ROAD

RCRA CORRECTIVE ACTION/CERCLA REMOVAL ACTION

GM CETC BEDFORD FACILITY, BEDFORD, INDIANA

- Restoration began on Parcels 40 and 81 in June 2013
- GM will complete the restoration in December 2013
- RACER is continuing restoration on Parcel 39
- Restoration upstream (east and south) of Peerless Road Bridge is complete





RESTORATION OF PARCELS 40 and 81 (WEST OF PEERLESS ROAD)

RCRA CORRECTIVE ACTION/CERCLA REMOVAL ACTION

GM CETC BEDFORD FACILITY, BEDFORD, INDIANA





RESTORATION OF PARCELS WEST OF PEERLESS ROAD

RCRA CORRECTIVE ACTION/CERCLA REMOVAL ACTION

G M C E T C B E D F O R D F A C I L I T Y , B E D F O R D , I N D I A N A





RESTORATION OF PARCELS WEST OF PEERLESS ROAD

RCRA CORRECTIVE ACTION/CERCLA REMOVAL ACTION





CREEK RESTORATION UPDATE

RCRA CORRECTIVE ACTION/CERCLA REMOVAL ACTION

GM CETC BEDFORD FACILITY, BEDFORD, INDIANA

MAY 6, 2000



OCT 7, 2003



APR 27, 2004



DEC 3, 2007



NOV 20, 2013

Looking west from Bailey Scales Road



CREEK RESTORATION

RCRA CORRECTIVE ACTION/CERCLA REMOVAL ACTION

GM CETC BEDFORD FACILITY, BEDFORD, INDIANA

JUNE 18, 2004



DECEMBER 3, 2007



DECEMBER 2007



OCTOBER 25, 2013

Restoration north of Broomsage Road



RESTORATION OF PARCELS WEST OF PEERLESS ROAD



RCRA CORRECTIVE ACTION/CERCLA REMOVAL ACTION

GM CETC BEDFORD FACILITY, BEDFORD, INDIANA





RCRA CORRECTIVE ACTION

RCRA CORRECTIVE ACTION / CERCLA REMOVAL ACTION

G M C E T C B E D F O R D F A C I L I T Y , B E D F O R D , I N D I A N A

- RCRA Corrective Action
 - Previously conducted by the old General Motors Corporation in accordance with a performance-based agreement with the U.S. EPA Region V. The agreement was signed on March 20, 2001 and amended October 1, 2002, March 29, 2008, and May 9, 2008.
 - GM LLC currently in discussion with USEPA on an Order that will replace the Agreement between GM LLC and USEPA for those areas for which GM LLC is responsible.

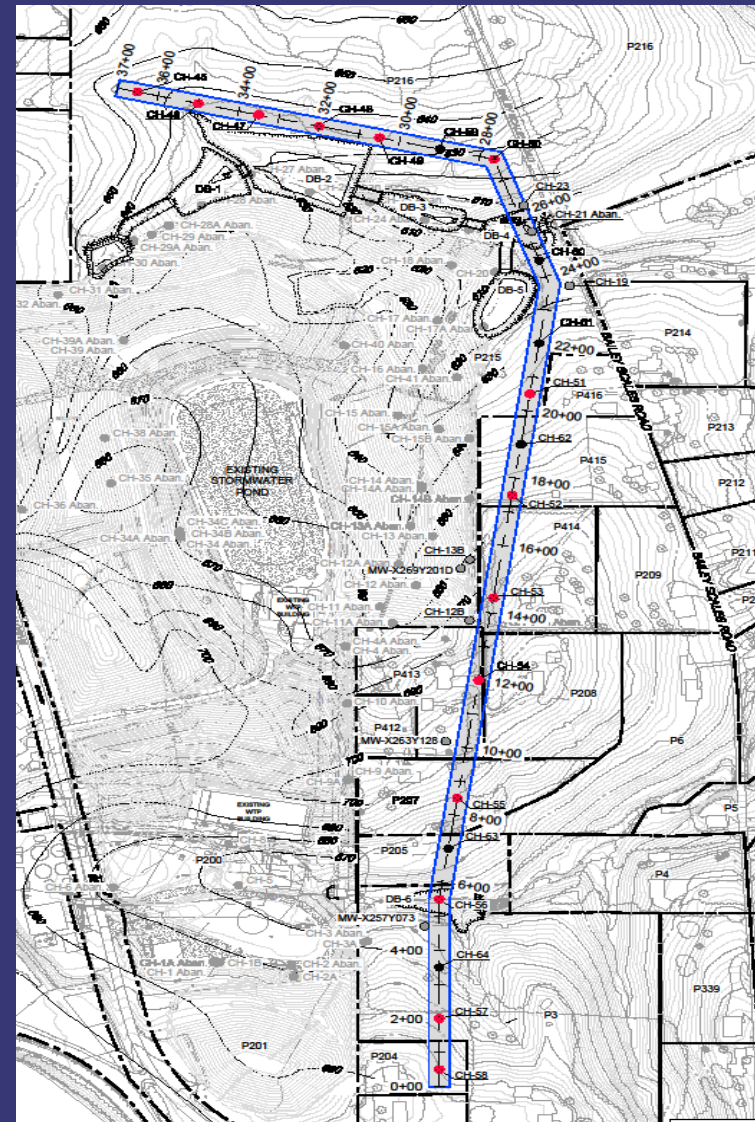


GROUNDWATER COLLECTION TRENCH

RCRA CORRECTIVE ACTION/CERCLA REMOVAL ACTION

GM CETC BEDFORD FACILITY, BEDFORD, INDIANA

- Work continued on design and alignment of perimeter groundwater trench and pilot trench
- GM has acquired all properties on Barlow Lane, where a section of the trench will be installed
- A motion was put before and approved by Bedford City Council to vacate Barlow Lane in advance of trench installation activities





GROUNDWATER COLLECTION TRENCH (TYPICAL TRENCHING OPERATIONS)

RCRA CORRECTIVE ACTION/CERCLA REMOVAL ACTION

GM CETC BEDFORD FACILITY, BEDFORD, INDIANA

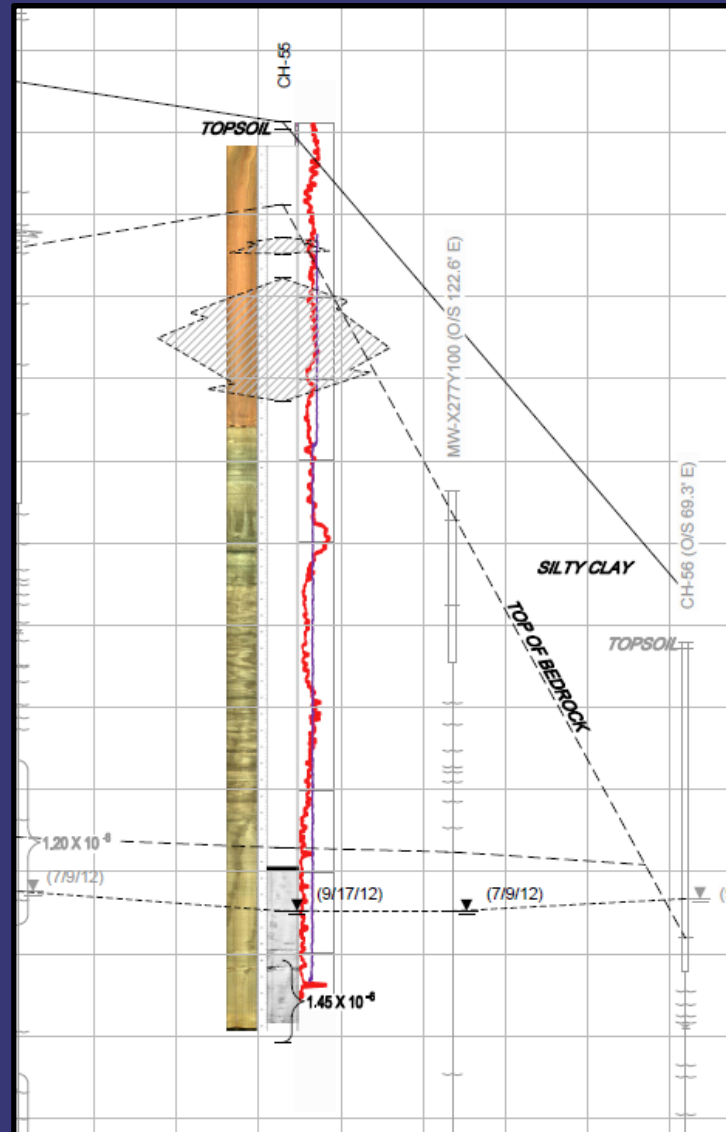




GROUNDWATER COLLECTION TRENCH

RCRA CORRECTIVE ACTION/CERCLA REMOVAL ACTION

GM CETC BEDFORD FACILITY, BEDFORD, INDIANA





UPCOMING ACTIVITIES

RCRA CORRECTIVE ACTION/CERCLA REMOVAL ACTION

G M C E T C B E D F O R D F A C I L I T Y , B E D F O R D , I N D I A N A

UPCOMING ACTIVITIES FOR 2014

- Continuation of maintenance or erosion controls as needed
- Continue containment, collection, and treatment of on-Site springs and groundwater collection systems that contain low levels of PCBs.
- Continue monitoring Spring 18
- Complete the pilot perimeter trench design
- Construct the pilot trench section once approved by USEPA
- Complete a work plan addendum to complete additional on-site sampling for the RCRA Facility Investigation Report
- Submit the East Plant Area Vault Construction Certification Report
- Submit Spring 018 Concrete Sealing Construction Certification Report
- Submit Downstream Parcels Soil Removal Construction Certification Report
- Complete the discussions on the Order with USEPA



COMMUNITY RELATIONS ACTIVITIES



RCRA CORRECTIVE ACTION/CERCLA REMOVAL ACTION

G M C E T C B E D F O R D F A C I L I T Y , B E D F O R D , I N D I A N A

- Community meetings have been held on a regular basis, most currently biannually
 - Meetings will continue to be announced in the Bedford Times Mail
 - Presentations have been and will continue to be posted to the website and the library
 - People can always call Katie Kamm with questions: (812) 277-8954
- A CLP Meeting was held today
- Information from the presentations and meeting minutes are posted to the website



COMMUNITY RELATIONS ACTIVITIES



R C R A C O R R E C T I V E A C T I O N / C E R C L A R E M O V A L A C T I O N

G M C E T C B E D F O R D F A C I L I T Y , B E D F O R D , I N D I A N A

- Project website at:
<http://www.BedfordPowertrainCorrectiveAction.com>
- Quarterly Community Meetings are available on the website
- All final approved documents can be found on the project website
- Community Liaison Panel (CLP) – members listed in minutes on website
- Periodic information sessions – next meeting likely to be held in Spring 2014.
- Periodic Project Fact Sheets (thirty-seven issued to date)
- Project Questions contact Katie Kamm: (812) 277-8954