



GM POWERTRAIN BEDFORD FACILITY BEDFORD, INDIANA

RCRA CORRECTIVE ACTION/CERCLA REMOVAL ACTION

GM POWERTRAIN BEDFORD PLANT, BEDFORD, INDIANA

Welcome to the December 2008 Public Information Session December 11, 2008



- Facility located on 152.5 acres and is approximately 1,000,000 square feet
- Approximately 1,000 employees



REMOVAL ACTION

RCRA CORRECTIVE ACTION/CERCLA REMOVAL ACTION

G M P O W E R T R A I N B E D F O R D P L A N T , B E D F O R D , I N D I A N A

- Comprehensive Environmental Response, Compensation, and Liability Act (CERCLA) Removal Action (RA)
 - Bailey's Branch and Pleasant Run PCB cleanup of creek sediments and floodplain soil.
 - RA Elements:
 - Control of impacted springs and seeps along creeks; and
 - Removal of floodplain soil to 1.8 ppm and sediment to 1 ppm in the creek.
 - On-Site and off-Site work is being consolidated to speed up progress.
 - Excavation of creek sediments and floodplain soil complete in Summer 2009.
 - Restoration of excavated areas continue into 2010.



RCRA CORRECTIVE ACTION/CERCLA REMOVAL ACTION

GM POWERTRAIN BEDFORD PLANT, BEDFORD, INDIANA

BORROW SOURCE AREA

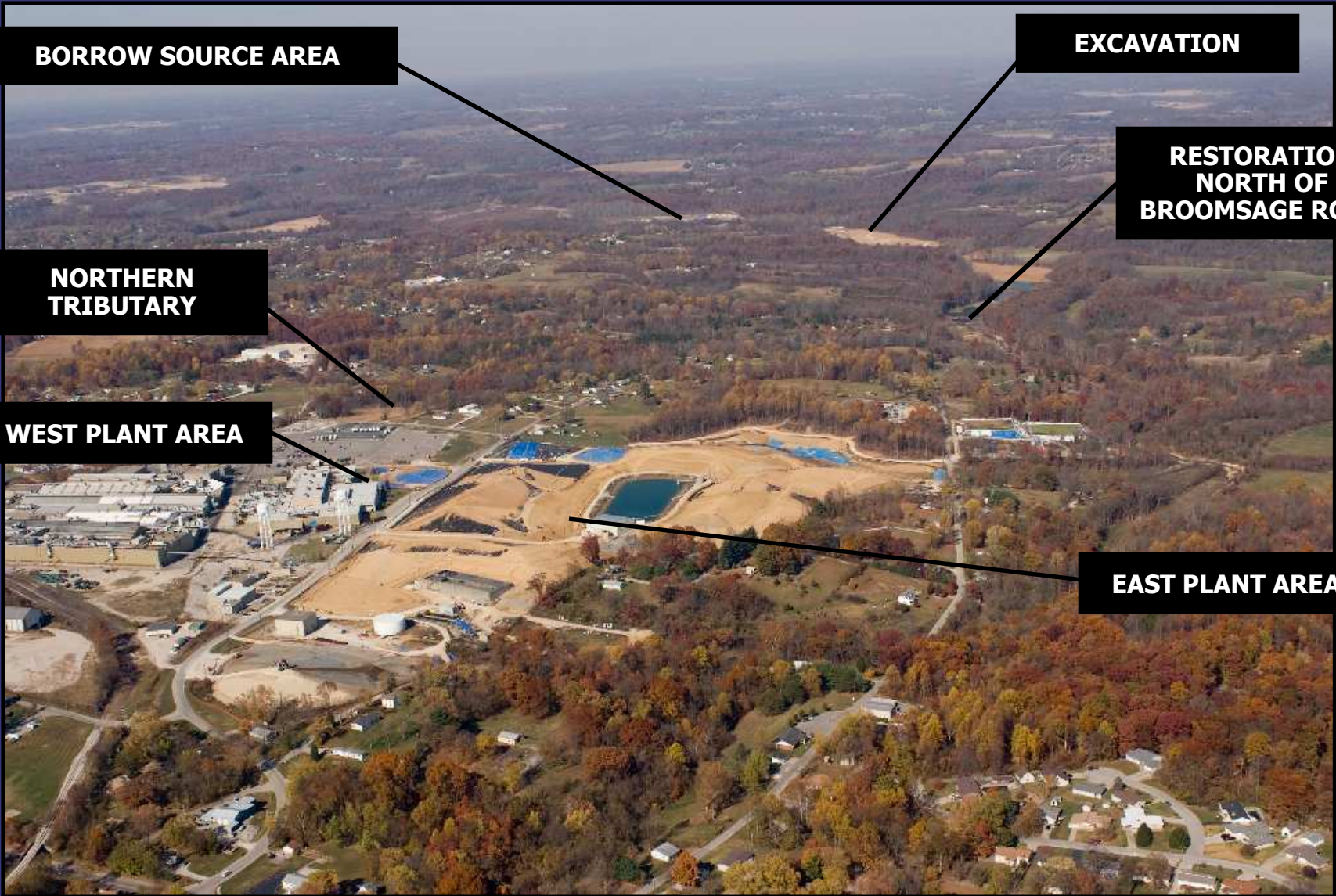
EXCAVATION

**RESTORATION
NORTH OF
BROOMSAGE ROAD**

**NORTHERN
TRIBUTARY**

WEST PLANT AREA

EAST PLANT AREA





REMOVAL ACTION STATUS

RCRA CORRECTIVE ACTION/CERCLA REMOVAL ACTION

GM POWERTRAIN BEDFORD PLANT, BEDFORD, INDIANA

**DIVERSION
CHANNEL NO. 3**

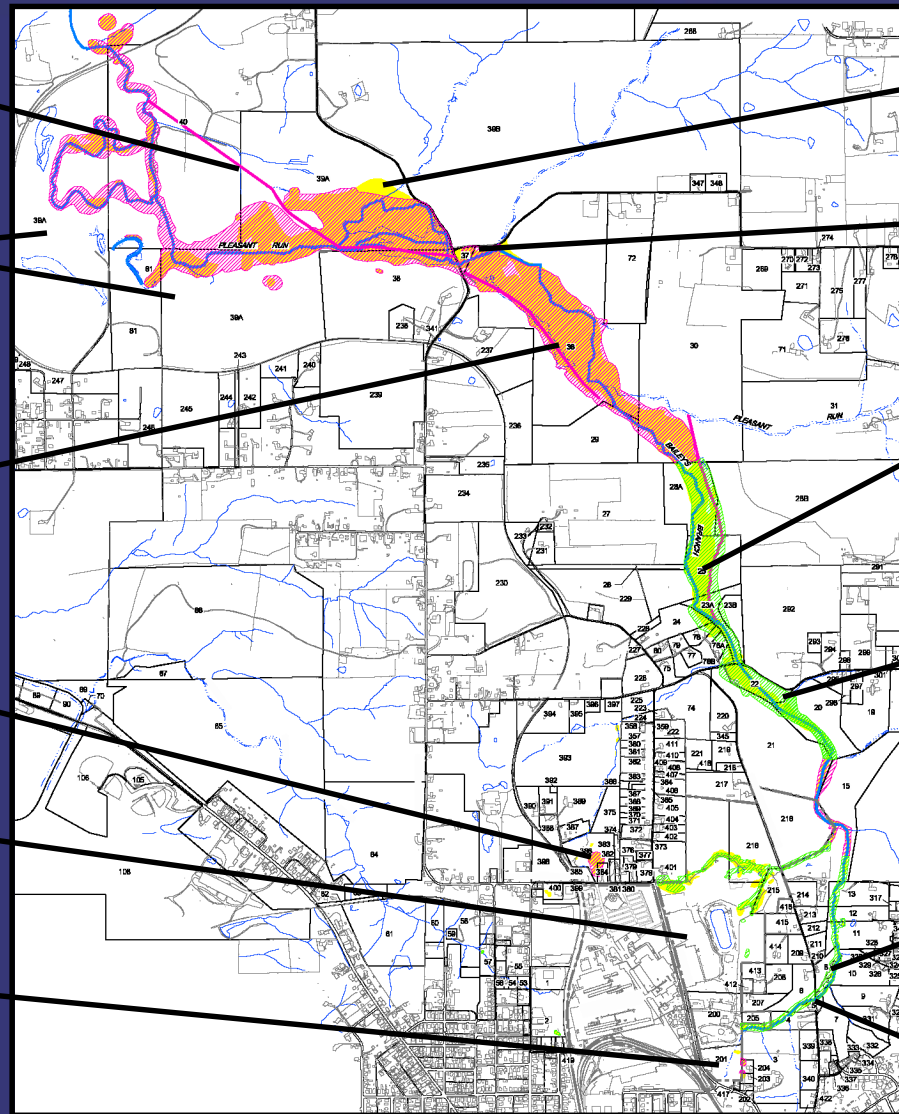
**BORROW SOURCE
AREA AND HAUL
ROAD**

**NEW RESTORATION
BETWEEN
BROOMSAGE ROAD
AND PEERLESS
ROAD**

**NORTHERN
TRIBUTARY**

**EAST PLANT AREA
VAULT**

PARCEL 201



STAGING AREA

**DOWNSTREAM
WATER
TREATMENT**

**RESTORATION
NORTH OF
BROOMSAGE ROAD**

**RESTORATION
SOUTH OF
BROOMSAGE ROAD**

**RESTORATION
EAST OF BAILEY
SCALES ROAD**

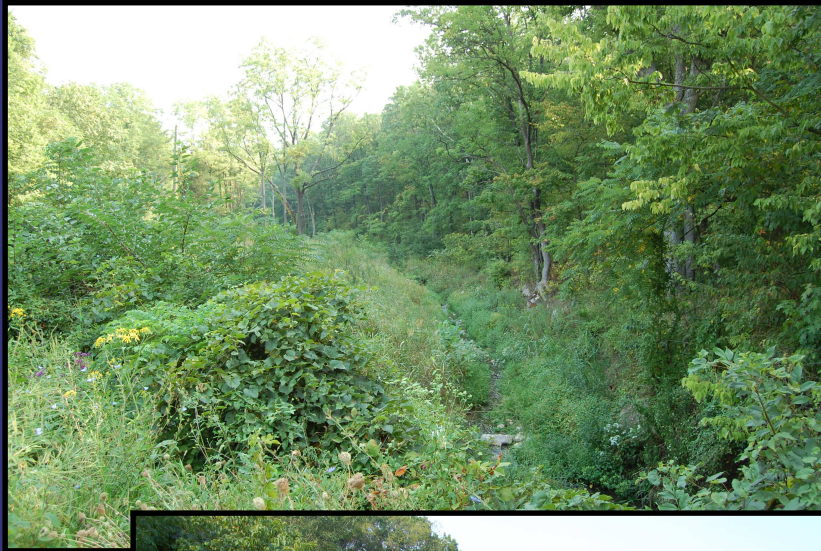
**RESTORATION
WEST OF BAILEY
SCALES ROAD**



CREEK RESTORATION

RCRA CORRECTIVE ACTION/CERCLA REMOVAL ACTION

GM POWERTRAIN BEDFORD PLANT, BEDFORD, INDIANA



Looking west and east from Bailey Scales Road



CREEK RESTORATION

RCRA CORRECTIVE ACTION/CERCLA REMOVAL ACTION

GM POWERTRAIN BEDFORD PLANT, BEDFORD, INDIANA



Looking north and south of Broomsage Road restoration



CREEK RESTORATION

RCRA CORRECTIVE ACTION/CERCLA REMOVAL ACTION

G M P O W E R T R A I N B E D F O R D P L A N T , B E D F O R D , I N D I A N A



Restoration North of Broomsage Road



CREEK RESTORATION

RCRA CORRECTIVE ACTION/CERCLA REMOVAL ACTION

GM POWERTRAIN BEDFORD PLANT, BEDFORD, INDIANA





CREEK RESTORATION

RCRA CORRECTIVE ACTION/CERCLA REMOVAL ACTION

GM POWERTRAIN BEDFORD PLANT, BEDFORD, INDIANA





CREEK RESTORATION STATUS

RCRA CORRECTIVE ACTION/CERCLA REMOVAL ACTION

GM POWERTRAIN BEDFORD PLANT, BEDFORD, INDIANA





CREEK RESTORATION STATUS

RCRA CORRECTIVE ACTION/CERCLA REMOVAL ACTION

G M P O W E R T R A I N B E D F O R D P L A N T , B E D F O R D , I N D I A N A



Restoration east of Peerless Road



CREEK RESTORATION STATUS

RCRA CORRECTIVE ACTION/CERCLA REMOVAL ACTION

GM POWERTRAIN BEDFORD PLANT, BEDFORD, INDIANA





CREEK EXCAVATION STATUS

RCRA CORRECTIVE ACTION/CERCLA REMOVAL ACTION

GM POWERTRAIN BEDFORD PLANT, BEDFORD, INDIANA



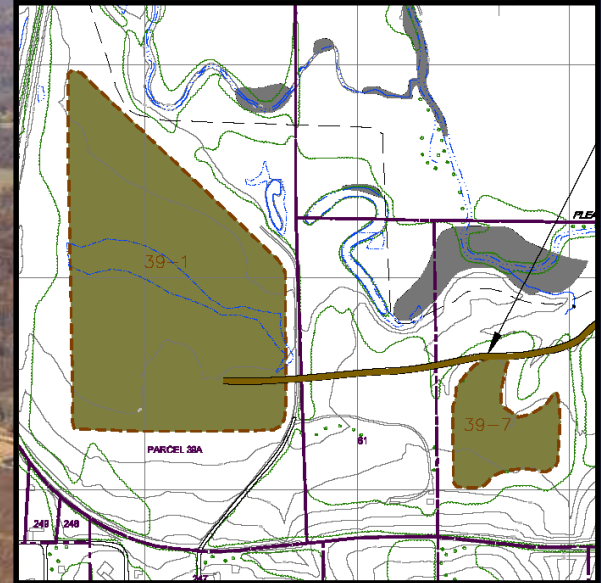
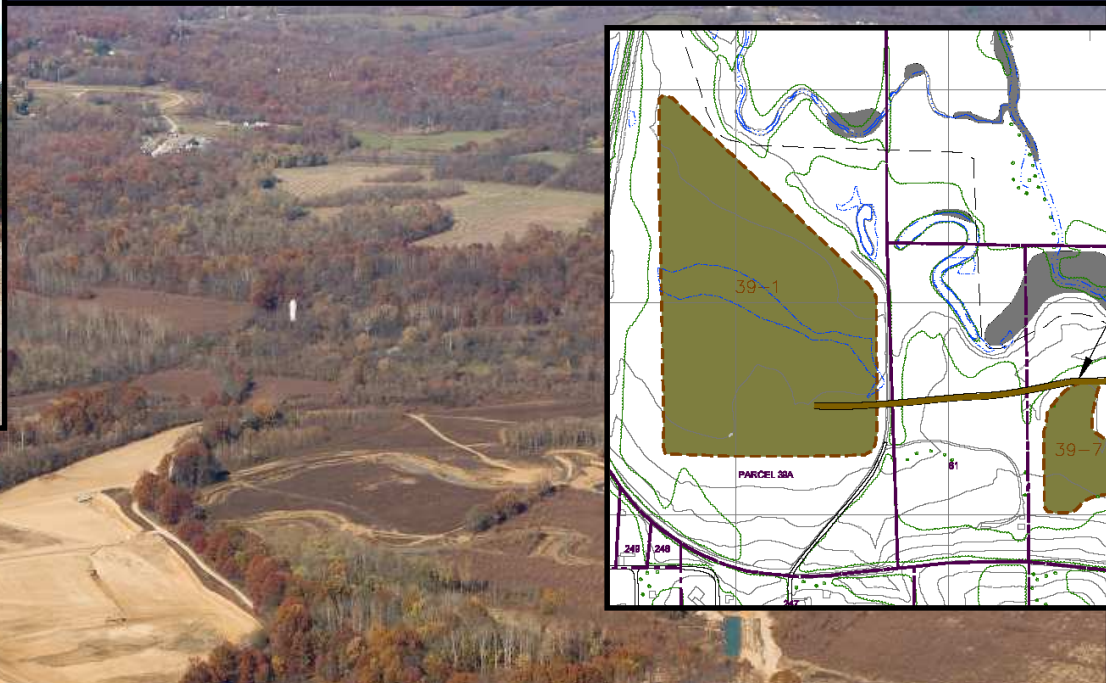
Excavation west of Peerless Road



BORROW SOURCE AREA

RCRA CORRECTIVE ACTION/CERCLA REMOVAL ACTION

GM POWERTRAIN BEDFORD PLANT, BEDFORD, INDIANA



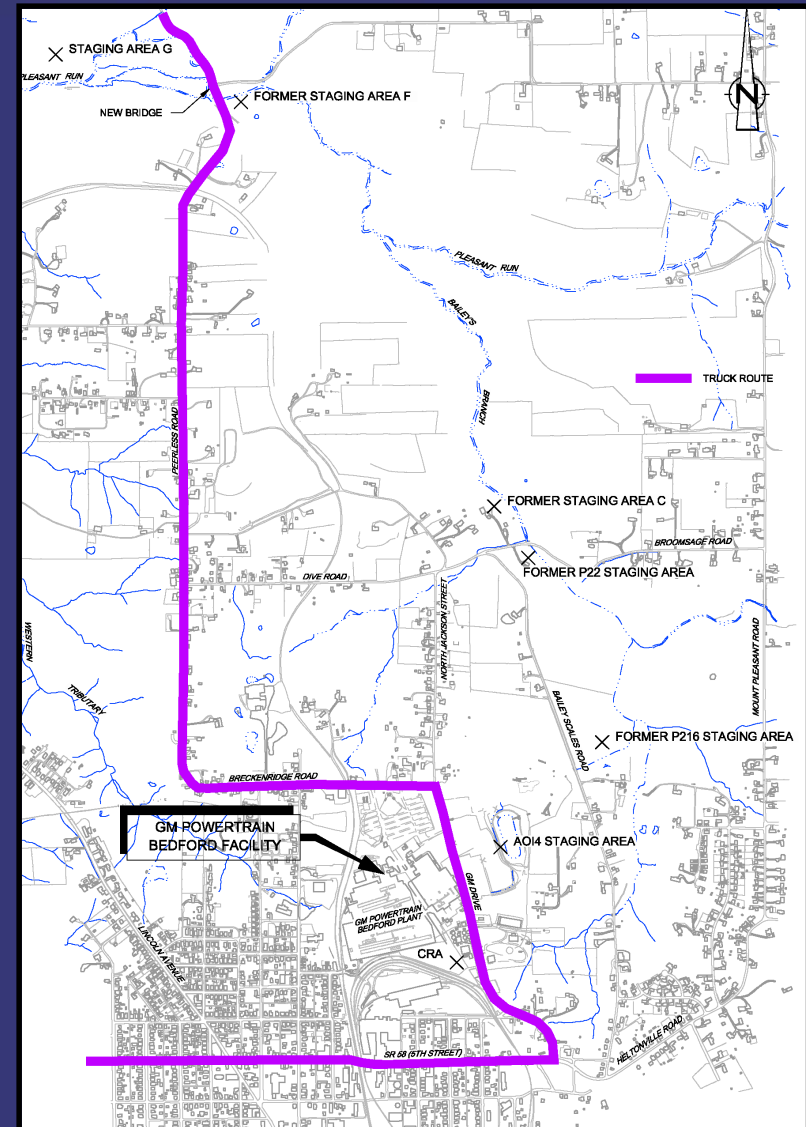


TRUCK TRAFFIC ROUTES

RCRA CORRECTIVE ACTION/CERCLA REMOVAL ACTION

GM POWERTRAIN BEDFORD PLANT, BEDFORD, INDIANA

- There will be decreased road traffic through the winter. Trucking will continue as weather allows.
- Trucking on a full time basis will resume in Spring 2009 when excavation and restoration activities are resumed.
- GM will be patching/paving roads as needed, as weather permits.
- CRA is continually monitoring driver safety of truckers.
- At the end of truck traffic, GM will be resurfacing/repairing the last stretches of road used by the project, where paving is in poor condition.
- Truck Traffic Issues:
Katie Kamm - (812) 279-0977





SEEPS AND SPRINGS

RCRA CORRECTIVE ACTION/CERCLA REMOVAL ACTION

GM POWERTRAIN BEDFORD PLANT, BEDFORD, INDIANA

- A report reviewing Removal Action approaches for Spring 018 is currently being reviewed by U.S. EPA.
- Monitoring continues to be conducted at least quarterly.





RCRA CORRECTIVE ACTION

RCRA CORRECTIVE ACTION/CERCLA REMOVAL ACTION

G M P O W E R T R A I N B E D F O R D P L A N T , B E D F O R D , I N D I A N A

- RCRA Corrective Action
 - Conducted under a performance-based agreement with the U.S. EPA Region V. The agreement was signed on March 20, 2001 and amended October 1, 2002, February 28, 2007, and February 27, 2008.
 - Continuing to perform soil and groundwater investigation
 - Implementing Interim Measures
 - East Plant Area
 - West Plant Area



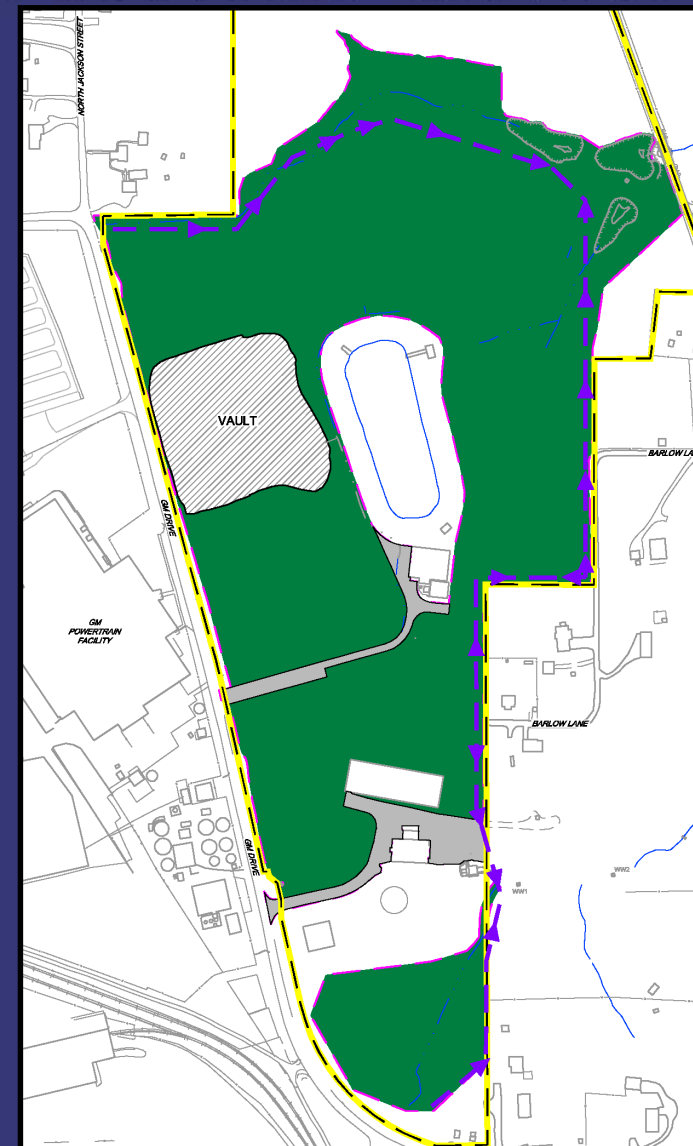
EAST PLANT AREA

RCRA CORRECTIVE ACTION/CERCLA REMOVAL ACTION

GM POWERTRAIN BEDFORD PLANT, BEDFORD, INDIANA

East Plant Area Interim Measure

- Re-use of low PCB Removal Action soil
 - ongoing
- Select soil removal
 - >50 PPM removal complete in the East Plant Area and placed into the Vault
- >50 PPM Landfill Vault
 - Filling of the Vault is complete
 - Installation of the Vault cover is underway
 - North section to have temporary cover for winter protection
- Cover System
 - Soil placement/hauling will slow during winter
- Perimeter Groundwater Collection System
 - Interim groundwater collection ongoing
 - Pilot Study Work Plan submitted to U.S. EPA
- AOI 8 Collection System
 - Interim recovery system to be installed
 - Design to be finalized
- Long-term maintenance and monitoring
 - Following construction





EAST PLANT AREA

RCRA CORRECTIVE ACTION/CERCLA REMOVAL ACTION

GM POWERTRAIN BEDFORD PLANT, BEDFORD, INDIANA





WEST PLANT AREA

RCRA CORRECTIVE ACTION/CERCLA REMOVAL ACTION

GM POWERTRAIN BEDFORD PLANT, BEDFORD, INDIANA

- Corner sewer work and fill excavation completed in 2008.





WEST PLANT AREA

RCRA CORRECTIVE ACTION/CERCLA REMOVAL ACTION

GM POWERTRAIN BEDFORD PLANT, BEDFORD, INDIANA

- The main excavation in front of plant will have a permanent cover and parking lot placed over top.

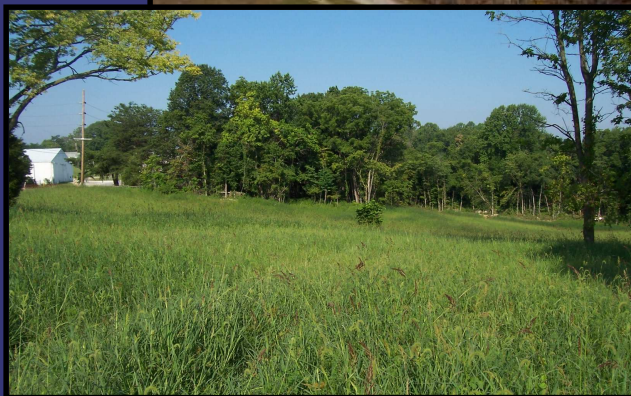




NORTHERN TRIBUTARY

RCRA CORRECTIVE ACTION/CERCLA REMOVAL ACTION

GM POWERTRAIN BEDFORD PLANT, BEDFORD, INDIANA





UPCOMING RCRA ACTIVITIES

RCRA CORRECTIVE ACTION/CERCLA REMOVAL ACTION

G M P O W E R T R A I N B E D F O R D P L A N T , B E D F O R D , I N D I A N A

UPCOMING ACTIVITIES FOR 2009

- Complete transfer of soil from creek areas to East Plant Area
- Complete the Vault cover
- Complete the East Plant Area Cover System
- Complete restoration in the main creek between the confluence of Bailey's Branch and Pleasant Run and the Peerless Road Bridge
- Complete restoration of the West Plant Area excavation
- Continue RFI groundwater monitoring
- Continue road repair work, as needed



COMMUNITY RELATIONS ACTIVITIES

RCRA CORRECTIVE ACTION/CERCLA REMOVAL ACTION

G M P O W E R T R A I N B E D F O R D P L A N T , B E D F O R D , I N D I A N A

- Community meetings are held on a quarterly basis.
 - Presentations have been and will continue to be posted to the website.
 - People can always come to the field trailer and talk one-on-one.
- Next meetings will be held in March 2009



COMMUNITY RELATIONS ACTIVITIES

RCRA CORRECTIVE ACTION/CERCLA REMOVAL ACTION

GM POWERTRAIN BEDFORD PLANT, BEDFORD, INDIANA

- Project website at:
<http://www.BedfordPowertrainCorrectiveAction.com>
- Quarterly Community Meetings are available on the website
- GM Community Relations Contact person is Susan Waun and the communications number is (812) 583-3753
- Public Information Repository (GM Plant) currently by appointment with Susan
- Community Liaison Panel (CLP)
- Periodic information sessions
- Periodic Project Fact Sheets (twenty-two issued to date)
- Truck Traffic Issues: Katie Kamm – (812) 279-0977