



# GM CETC BEDFORD FACILITY BEDFORD, INDIANA

RCRA CORRECTIVE ACTION/CERCLA REMOVAL ACTION

GM CETC BEDFORD FACILITY, BEDFORD, INDIANA

## Welcome to the 4th Quarter 2010 Public Information Session December 2, 2010



- Facility located on 152.5 acres and is approximately 1,000,000 square feet of manufacturing footprint
- Approximately 400 employees

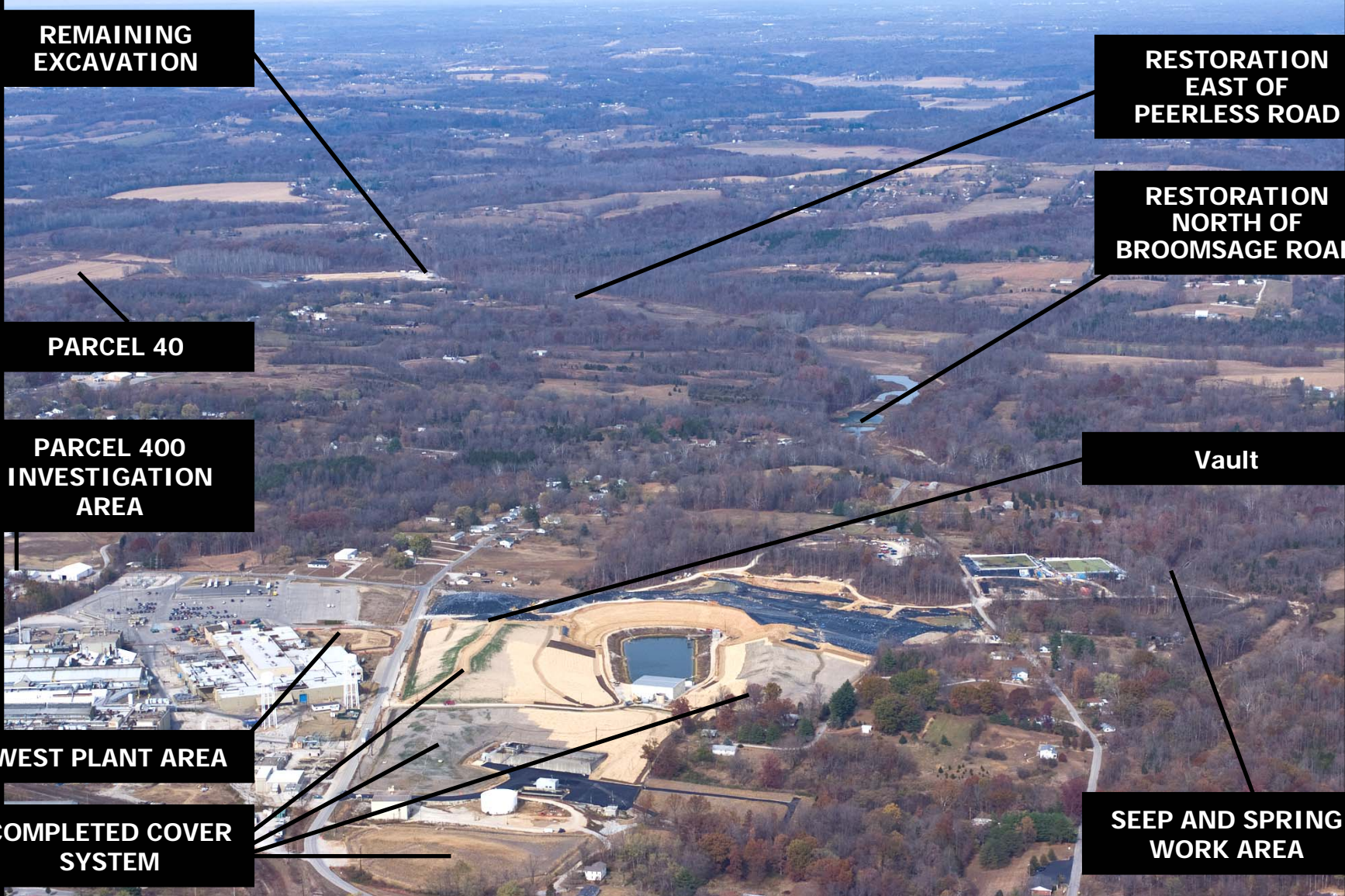


- Comprehensive Environmental Response, Compensation, and Liability Act (CERCLA) Removal Action (RA)
  - Bailey's Branch and Pleasant Run PCB cleanup of creek sediments and floodplain soil.
  - RA Elements:
    - Control of impacted springs and seeps along creeks; and
    - Removal of floodplain soil to 1.8 ppm and sediment to 1 ppm in the creek.
  - GM LLC and MLC completed an agreement to consolidate the remaining creek removal work with the work at the East Plant Area.
    - Balance of soil removal will be completed in 2011.
  - Restoration will continue into 2011.



RCRA CORRECTIVE ACTION/CERCLA REMOVAL ACTION

GM CETC REDFORD FACILITY REDFORD INDIANA



REMAINING EXCAVATION

RESTORATION EAST OF PEERLESS ROAD

RESTORATION NORTH OF BROOMSAGE ROAD

PARCEL 40

PARCEL 400 INVESTIGATION AREA

Vault

WEST PLANT AREA

COMPLETED COVER SYSTEM

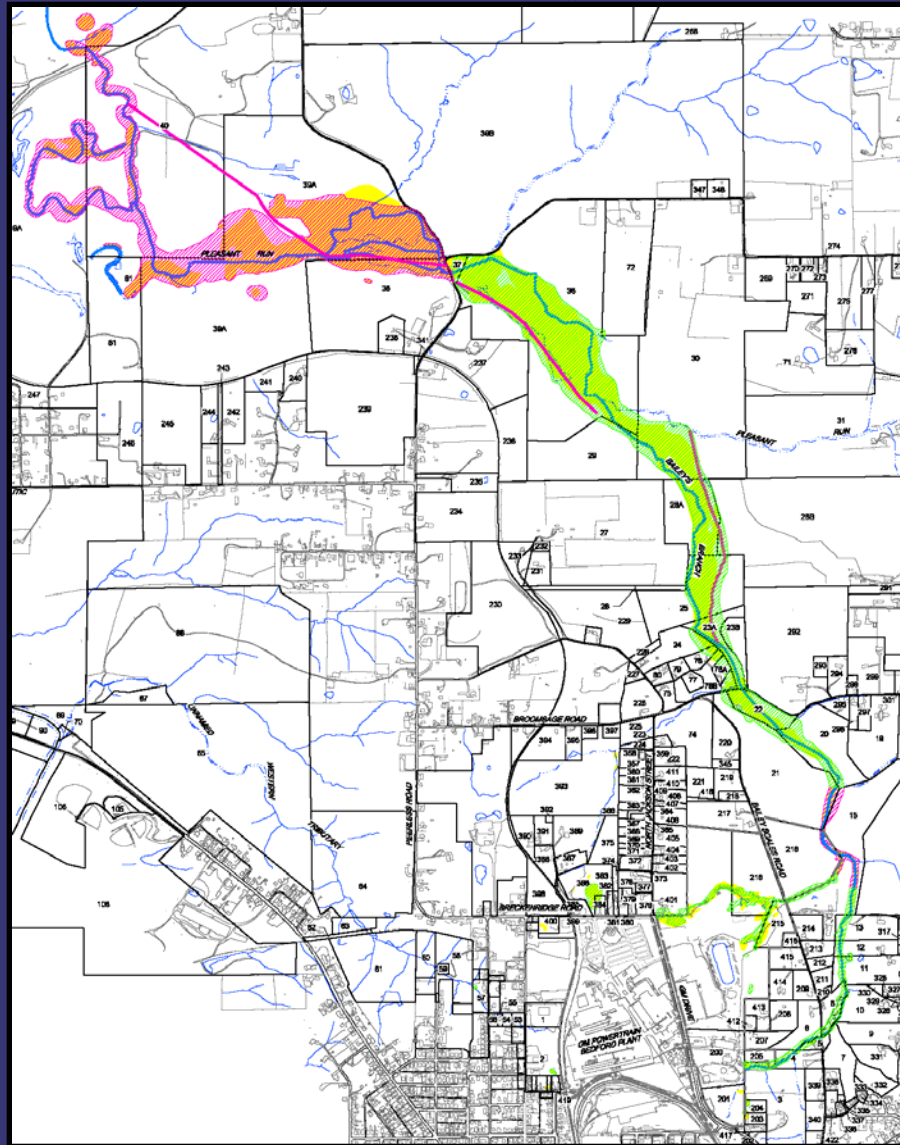
SEEP AND SPRING WORK AREA



# REMOVAL ACTION STATUS

RCRA CORRECTIVE ACTION/CERCLA REMOVAL ACTION

GM CETC BEDFORD FACILITY, BEDFORD, INDIANA





# CREEK RESTORATION

RCRA CORRECTIVE ACTION/CERCLA REMOVAL ACTION

GM CETC BEDFORD FACILITY, BEDFORD, INDIANA

West from Bailey Scales  
Road





# CREEK RESTORATION

RCRA CORRECTIVE ACTION/CERCLA REMOVAL ACTION

GM CETC BEDFORD FACILITY, BEDFORD, INDIANA

East from Bailey Scales Road





# CREEK RESTORATION

RCRA CORRECTIVE ACTION/CERCLA REMOVAL ACTION

GM CETC BEDFORD FACILITY, BEDFORD, INDIANA



South of Broomsage Road Restoration



# CREEK RESTORATION

RCRA CORRECTIVE ACTION/CERCLA REMOVAL ACTION

G M C E T C B E D F O R D F A C I L I T Y , B E D F O R D , I N D I A N A



Looking south from Broomsage Road





# CREEK RESTORATION

RCRA CORRECTIVE ACTION/CERCLA REMOVAL ACTION

GM CETC BEDFORD FACILITY, BEDFORD, INDIANA



Restoration North of Broomsage Road



# CREEK RESTORATION

RCRA CORRECTIVE ACTION/CERCLA REMOVAL ACTION

GM CETC BEDFORD FACILITY, BEDFORD, INDIANA



Looking north of Broomsage Road restoration



# CREEK RESTORATION

RCRA CORRECTIVE ACTION/CERCLA REMOVAL ACTION

G M C E T C B E D F O R D F A C I L I T Y , B E D F O R D , I N D I A N A



Looking north of Broomsage Road restoration



# CREEK RESTORATION STATUS

RCRA CORRECTIVE ACTION/CERCLA REMOVAL ACTION

GM CETC BEDFORD FACILITY, BEDFORD, INDIANA



Restoration east of Peerless Road



# CREEK RESTORATION

RCRA CORRECTIVE ACTION/CERCLA REMOVAL ACTION

GM CETC BEDFORD FACILITY, BEDFORD, INDIANA



Restoration East of Peerless Road



# CREEK EXCAVATION STATUS

RCRA CORRECTIVE ACTION/CERCLA REMOVAL ACTION

GM CETC BEDFORD FACILITY, BEDFORD, INDIANA



Excavation and soil pile remaining west of Peerless Road



# CREEK EXCAVATION STATUS

RCRA CORRECTIVE ACTION/CERCLA REMOVAL ACTION

G M C E T C B E D F O R D F A C I L I T Y , B E D F O R D , I N D I A N A



Additional delineation completed at Area G October through November 2010



# CREEK RESTORATION

RCRA CORRECTIVE ACTION / CERCLA REMOVAL ACTION

G M C E T C B E D F O R D F A C I L I T Y , B E D F O R D , I N D I A N A



Naturalized excavation west of Peerless Road





RCRA CORRECTIVE ACTION/CERCLA REMOVAL ACTION

G M C E T C B E D F O R D F A C I L I T Y , B E D F O R D , I N D I A N A



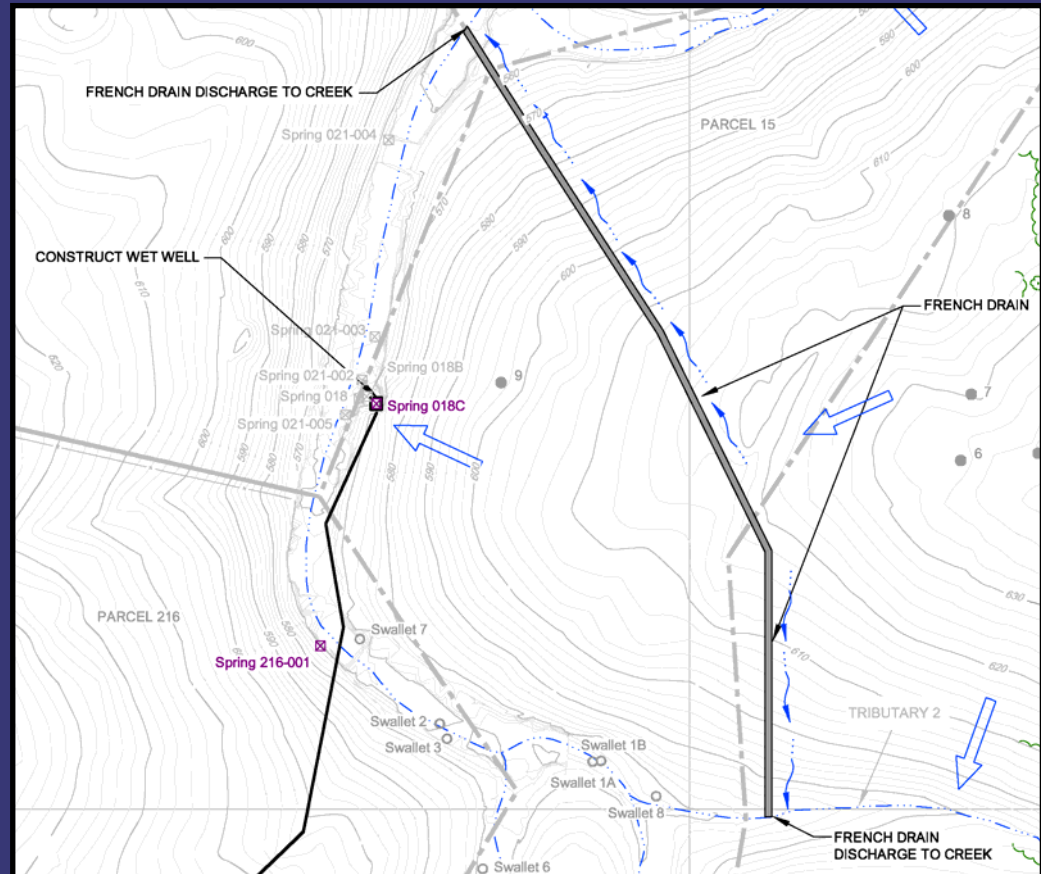


# SPRING 018 REMOVAL ACTION

RCRA CORRECTIVE ACTION / CERCLA REMOVAL ACTION

GM CETC BEDFORD FACILITY, BEDFORD, INDIANA

- Construct French-drain east of Spring 018
- Clean groundwater collected in the French-drain will be diverted from Spring 018 and discharge into the creek upstream and downstream of the Spring
- A reduced volume of water discharged at Spring 018 will continue to be collected and treated at one of the on-Site water treatment plants



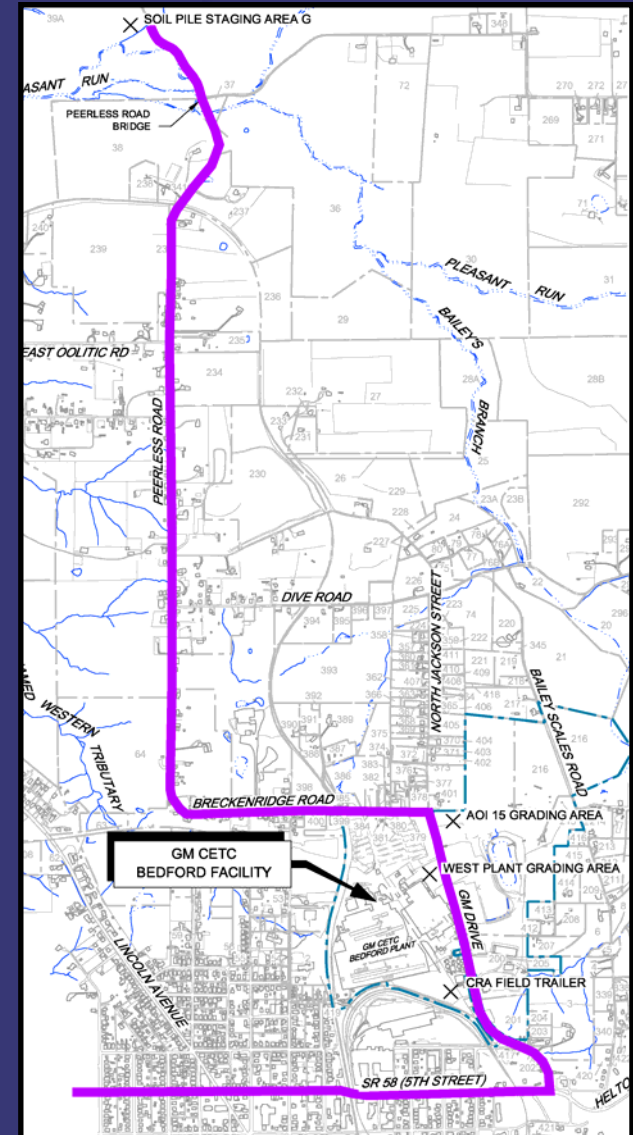


# TRUCK TRAFFIC ROUTES

RCRA CORRECTIVE ACTION/CERCLA REMOVAL ACTION

GM CETC BEDFORD FACILITY, BEDFORD, INDIANA

- Road traffic has been suspended through the winter and early spring 2011
- CRA monitors safety of truckers.
- Once project truck traffic has ended, GM will place a final surface layer on the portions of Peerless and Breckenridge Roads paved in early 2010.
- GM will continue to monitor the need for patching roads once project truck traffic resumes in 2011.
- Truck Traffic Issues:  
Katie Kamm - (812) 277-8954





- RCRA Corrective Action

- Conducted in accordance with a performance-based agreement with the U.S. EPA Region V. The agreement was signed on March 20, 2001 and amended October 1, 2002, March 29, 2008, and May 9, 2008
- Groundwater testing completed in July/August 2010.
- Implementing Interim Measures
  - East Plant Area
  - West Plant Area



# EAST PLANT AREA


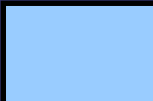

RCRA CORRECTIVE ACTION/CERCLA REMOVAL ACTION

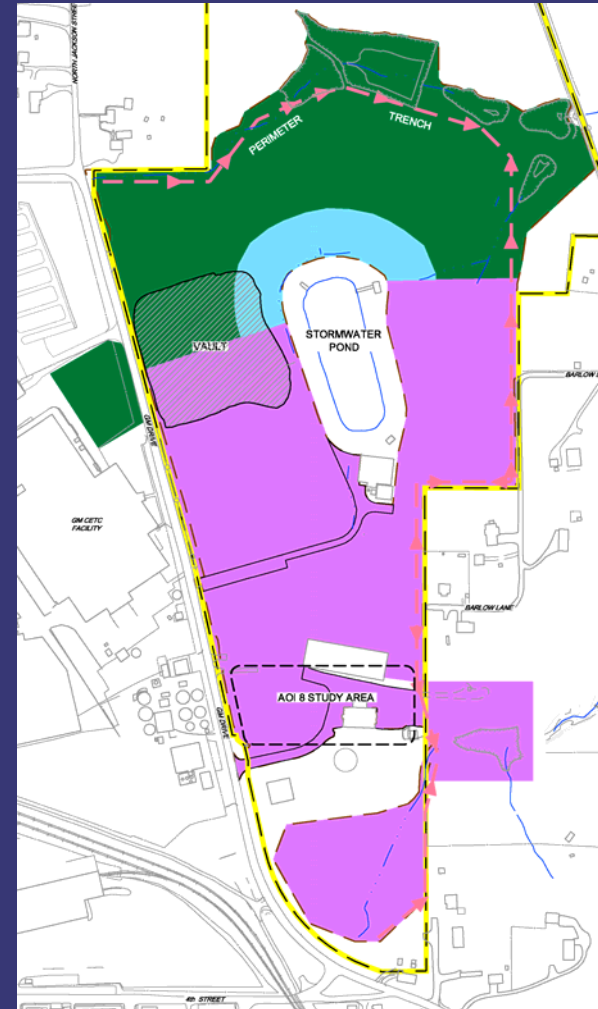
GM CETC BEDFORD FACILITY, BEDFORD, INDIANA



## East Plant Area Interim Measure

- Re-use of creek soil
- Select soil removal/landfill vault
- Cover system
- Perimeter groundwater collection system
- AOI 8 collection system
- Long-term maintenance and monitoring

-  Substantially complete work areas
-  Partially complete work areas
-  Planned for 2011





# EAST PLANT AREA

RCRA CORRECTIVE ACTION/CERCLA REMOVAL ACTION

G M C E T C B E D F O R D F A C I L I T Y , B E D F O R D , I N D I A N A



Completed asphalt cover work around the water treatment facility.



# EAST PLANT AREA

RCRA CORRECTIVE ACTION/CERCLA REMOVAL ACTION

G M C E T C B E D F O R D F A C I L I T Y , B E D F O R D , I N D I A N A



Close-up of the asphalt cover installed at the water treatment facility.





# EAST PLANT AREA

RCRA CORRECTIVE ACTION/CERCLA REMOVAL ACTION

GM CETC BEDFORD FACILITY, BEDFORD, INDIANA



Workers checking liner seams north of the stormwater pond.



# EAST PLANT AREA

RCRA CORRECTIVE ACTION/CERCLA REMOVAL ACTION

GM CETC BEDFORD FACILITY, BEDFORD, INDIANA



Placing clean soil over liner.



Completed liner installation north of the stormpond.

- Overseeding of problem areas completed this fall.
- Some liner areas will require additional grading work in 2011.



# WEST PLANT AREA

RCRA CORRECTIVE ACTION/CERCLA REMOVAL ACTION

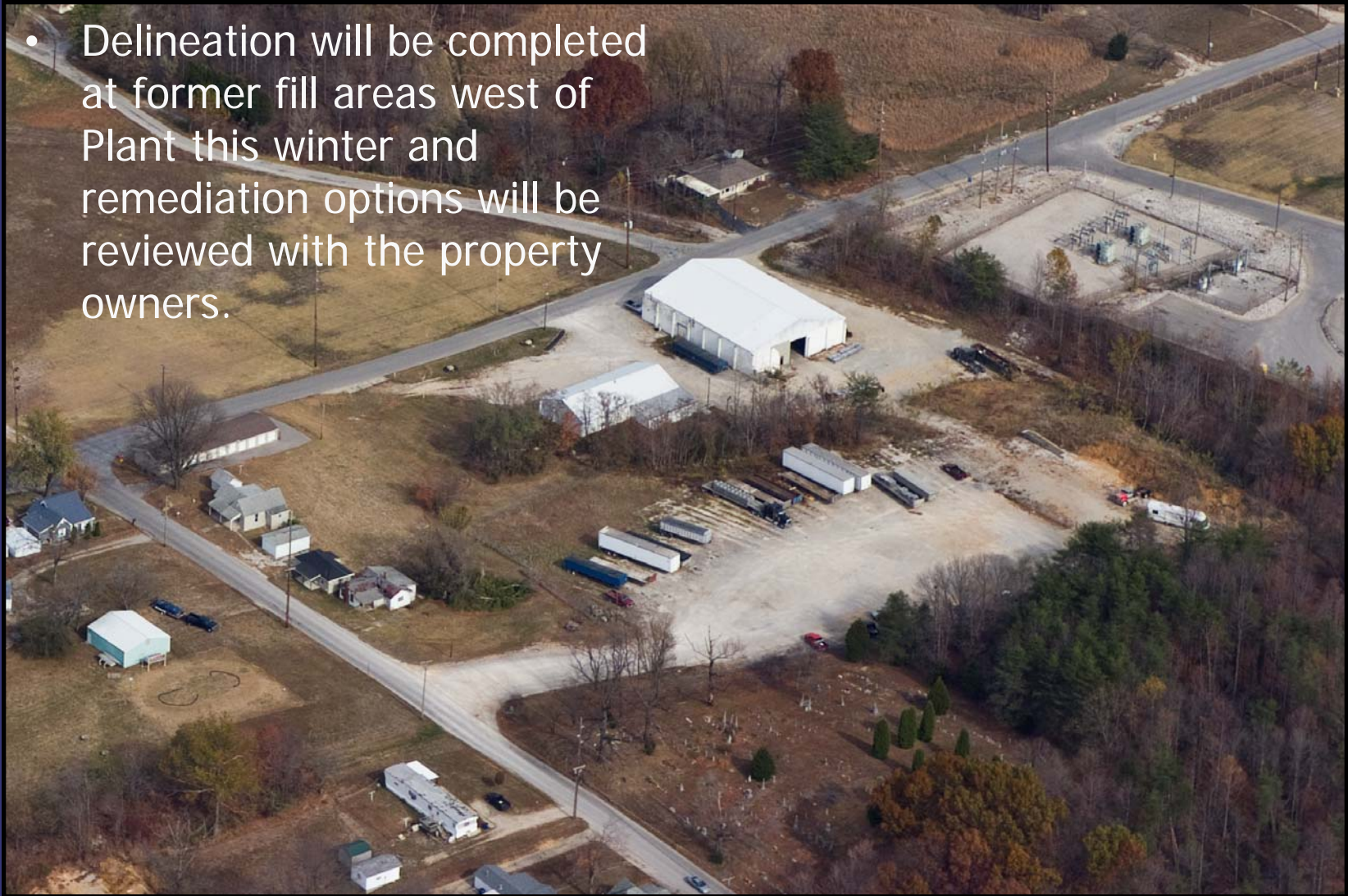
GM CETC BEDFORD FACILITY, BEDFORD, INDIANA

- The former excavation in front of the plant will have a permanent vegetative and asphalt cover placed over the former excavation.



- West Plant cover work will be completed in 2011

- Delineation will be completed at former fill areas west of Plant this winter and remediation options will be reviewed with the property owners.





# UPCOMING RCRA ACTIVITIES

RCRA CORRECTIVE ACTION/CERCLA REMOVAL ACTION

G M C E T C B E D F O R D F A C I L I T Y , B E D F O R D , I N D I A N A

## UPCOMING ACTIVITIES FOR WINTER 2010/2011

- Cover incomplete work areas in preparation for winter and spring rainy season
- Complete additional bedrock studies at AOI 8
- Complete additional delineation in Parcel 400/430/431 area properties west of Plant and complete a work plan

## UPCOMING ACTIVITIES FOR 2011

- Complete East Plant Area and West Plant Area Cover Systems
- Complete restoration east of Peerless Road
- Continue RFI groundwater monitoring
- Complete installation of Pilot Perimeter Groundwater Collection Trench
- Complete soil removal at Area G, west of Peerless Road



# COMMUNITY RELATIONS ACTIVITIES

RCRA CORRECTIVE ACTION/CERCLA REMOVAL ACTION

GM CETC BEDFORD FACILITY, BEDFORD, INDIANA

- Community meetings are held on a quarterly basis.
  - Presentations have been and will continue to be posted to the website
  - People can always come to the field trailer and talk one-on-one or call Katie Kamm: (812) 277-8954
- Next meetings will be held in March 2011
- CLP Meeting to be held on December 3, 2010



# COMMUNITY RELATIONS ACTIVITIES

RCRA CORRECTIVE ACTION/CERCLA REMOVAL ACTION

G M C E T C B E D F O R D F A C I L I T Y , B E D F O R D , I N D I A N A

- Project website at:  
<http://www.BedfordPowertrainCorrectiveAction.com>
- Quarterly Community Meetings are available on the website
- Public Information Repository (GM Plant) currently by appointment with Katie and repository publications are also available on the project website
- Community Liaison Panel (CLP) – members listed in minutes on website
- Periodic information sessions
- Periodic Project Fact Sheets (thirty issued to date)
- Project Questions or Truck Traffic Issues contact Katie Kamm:  
(812) 277-8954