



GM POWERTRAIN BEDFORD FACILITY BEDFORD, INDIANA

RCRA CORRECTIVE ACTION/CERCLA REMOVAL ACTION

GM POWERTRAIN BEDFORD PLANT, BEDFORD, INDIANA

Welcome to the December 2006 Public Information Session December 7, 2006



- Facility located on 152.5 acres and is approximately 1,000,000 square feet
- Approximately 1,000 employees



- Comprehensive Environmental Response, Compensation, and Liability Act (CERCLA) Removal Action (RA)
 - Bailey's Branch and Pleasant Run PCB cleanup of creek sediments and floodplain soil.
 - RA Elements:
 - Control of impacted springs and seeps along creeks;
 - Removal of floodplain soil to 1.8 ppm and sediment to 1 ppm in the creek



REMOVAL ACTION STATUS

RCRA CORRECTIVE ACTION/CERCLA REMOVAL ACTION

GM POWERTRAIN BEDFORD PLANT, BEDFORD, INDIANA

**DIVERSION
CHANNEL NO. 3**

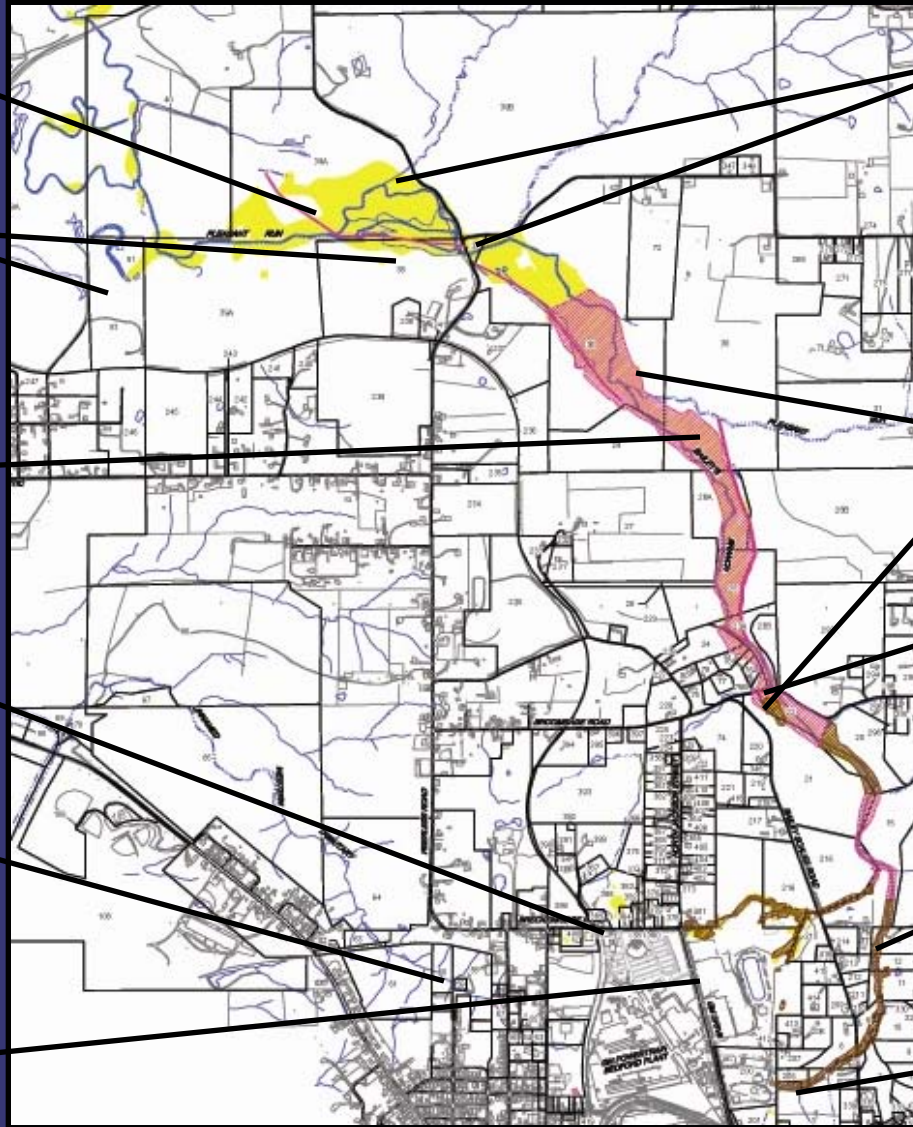
**BORROW SOURCE
AREA AND HAUL
ROAD**

**EXCAVATION
BETWEEN
BROOMSAGE ROAD
AND PEERLESS
ROAD**

**NORTHERN
TRIBUTARY**

**WESTERN
TRIBUTARY**

**EAST PLANT AREA
VAULT**



STAGING AREAS

**EXCAVATION NEAR
BROOMSAGE ROAD
AND
DOWNSTREAM**

**BROOMSAGE ROAD
CULVERT
REPLACEMENT**

**RESTORATION
EAST OF BAILEY
SCALES ROAD**

**RESTORATION
WEST OF BAILEY
SCALES ROAD**

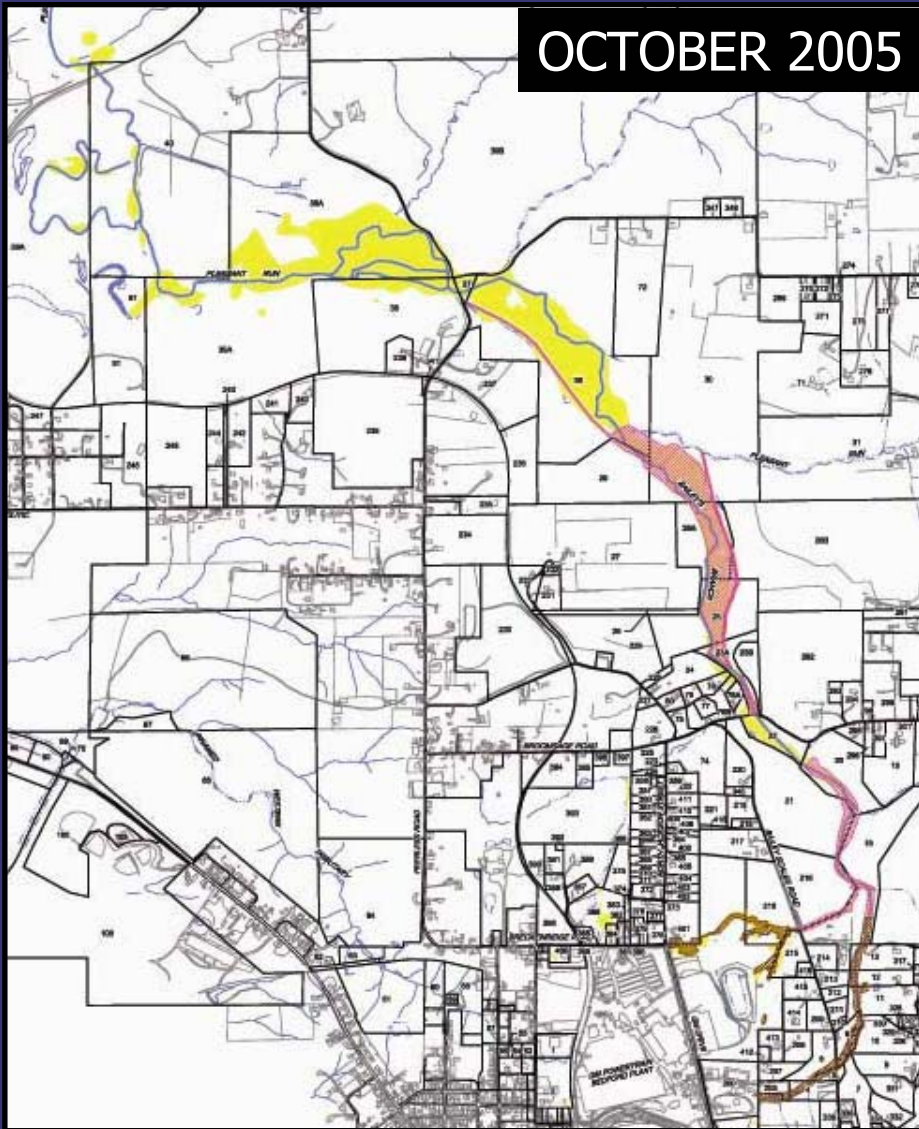


REMOVAL ACTION STATUS OCTOBER 2005 – DECEMBER 2006

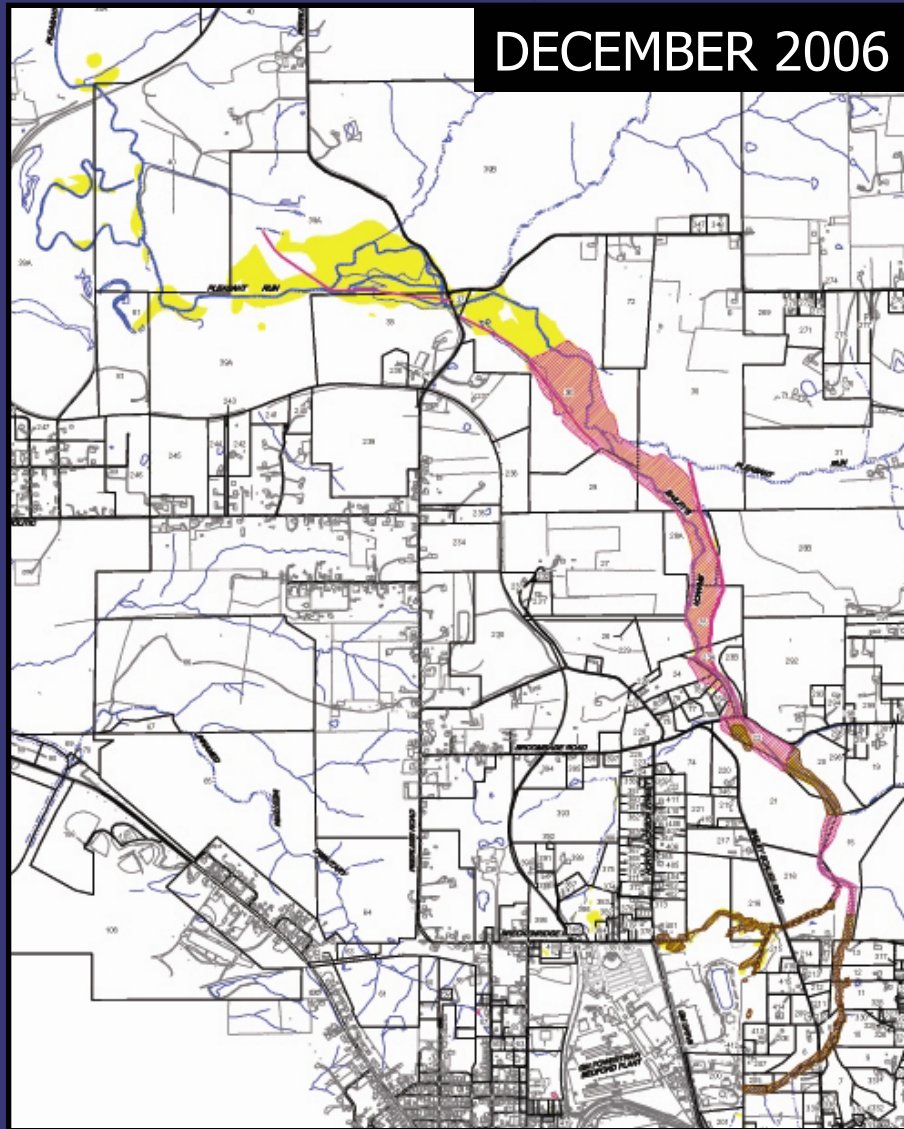
RCRA CORRECTIVE ACTION/CERCLA REMOVAL ACTION

GM POWERTRAIN BEDFORD PLANT, BEDFORD, INDIANA

OCTOBER 2005



DECEMBER 2006





CREEK RESTORATION

RCRA CORRECTIVE ACTION / CERCLA REMOVAL ACTION

GM POWERTRAIN BEDFORD PLANT, BEDFORD, INDIANA



Looking west from Bailey Scales Road



CREEK RESTORATION

RCRA CORRECTIVE ACTION/CERCLA REMOVAL ACTION

GM POWERTRAIN BEDFORD PLANT, BEDFORD, INDIANA



Looking east from Bailey Scales Road



CREEK RESTORATION

RCRA CORRECTIVE ACTION/CERCLA REMOVAL ACTION

GM POWERTRAIN BEDFORD PLANT, BEDFORD, INDIANA



Parcel 15 and 216 restoration east of Bailey Scales Road



CREEK RESTORATION

RCRA CORRECTIVE ACTION/CERCLA REMOVAL ACTION

GM POWERTRAIN BEDFORD PLANT, BEDFORD, INDIANA



Parcels 20 & 21 restoration



CREEK RESTORATION

RCRA CORRECTIVE ACTION/CERCLA REMOVAL ACTION

GM POWERTRAIN BEDFORD PLANT, BEDFORD, INDIANA



Property south of
Broomsage Road restoration



Property south of Broomsage Road



CREEK RESTORATION

RCRA CORRECTIVE ACTION/CERCLA REMOVAL ACTION

GM POWERTRAIN BEDFORD PLANT, BEDFORD, INDIANA



Property south of Broomsage Road restoration



REMOVAL ACTION STATUS

RCRA CORRECTIVE ACTION/CERCLA REMOVAL ACTION

GM POWERTRAIN BEDFORD PLANT, BEDFORD, INDIANA

- Broomsage Road Culvert Crossing Over Baileys Branch Creek
 - GM has been working with Lawrence County to replace the culvert on Broomsage Road.
 - The road closure started in October and is expected reopen mid-January 2007.
 - GM has constructed a turnaround east of the culvert crossing for local school buses.





BROOMSAGE ROAD CULVERT REPLACEMENT

RCRA CORRECTIVE ACTION/CERCLA REMOVAL ACTION

GM POWERTRAIN BEDFORD PLANT, BEDFORD, INDIANA





SCHOOL BUS TURNAROUND

RCRA CORRECTIVE ACTION/CERCLA REMOVAL ACTION

GM POWERTRAIN BEDFORD PLANT, BEDFORD, INDIANA



Turnaround looking south from Broomsage Road



REMOVAL ACTION STATUS

RCRA CORRECTIVE ACTION/CERCLA REMOVAL ACTION

GM POWERTRAIN BEDFORD PLANT, BEDFORD, INDIANA

- A paving contractor is on retainer to maintain the roads, as needed. More difficult to perform repair in winter as asphalt plants are shut down.
- GM contacted local schools regarding school bus routes and hours.
- Contractors are informed of local traffic concerns, including school bus routes and hours.
- CRA is continually monitoring driver safety of truckers.
- Truck Traffic Issues:
Katie Kamm - (812) 279-0977





REMOVAL ACTION STATUS

RCRA CORRECTIVE ACTION/CERCLA REMOVAL ACTION

GM POWERTRAIN BEDFORD PLANT, BEDFORD, INDIANA



Excavation east of Peerless Road



REMOVAL ACTION STATUS

RCRA CORRECTIVE ACTION/CERCLA REMOVAL ACTION

G M P O W E R T R A I N B E D F O R D P L A N T , B E D F O R D , I N D I A N A



Excavation east of Peerless Road



REMOVAL ACTION STATUS

RCRA CORRECTIVE ACTION/CERCLA REMOVAL ACTION

GM POWERTRAIN BEDFORD PLANT, BEDFORD, INDIANA



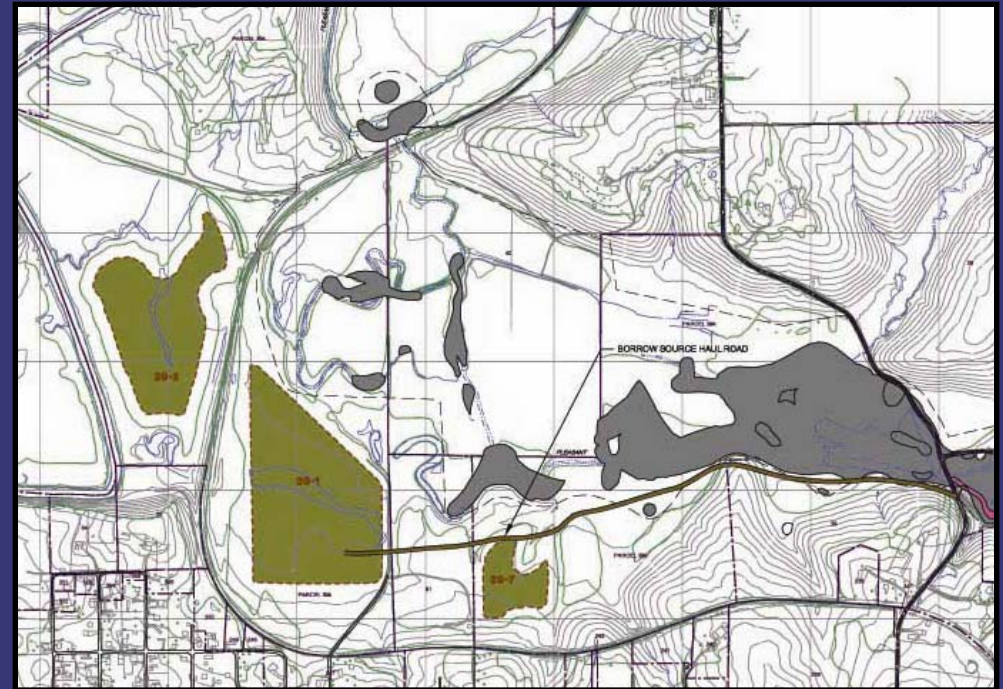
Diversion Channel No. 3 Excavation



REMOVAL ACTION STATUS BORROW SOURCE AREA

RCRA CORRECTIVE ACTION/CERCLA REMOVAL ACTION

GM POWERTRAIN BEDFORD PLANT, BEDFORD, INDIANA



GM has created a borrow source for use in restoration



- RCRA Corrective Action
 - Conducted under a performance-based agreement with the U.S. EPA Region V. The agreement was signed on March 20, 2001 and amended on October 1, 2002.
 - Continuing to perform soil and groundwater investigation
 - Installing of new groundwater wells and new round of groundwater sampling
 - Dye investigation
 - Implementing Interim Measures
 - East Plant Area
 - Western Tributary completed in November 2006
 - Northern Tributary in early 2007



STATUS OF RCRA CORRECTIVE ACTION

RCRA CORRECTIVE ACTION/CERCLA REMOVAL ACTION

GM POWERTRAIN BEDFORD PLANT, BEDFORD, INDIANA

UPCOMING ACTIVITIES 2007

- Continue Dye Trace testing west of GM Drive
- Implement the Northern Tributary IM
- Continue RFI groundwater monitoring
- Additional groundwater investigation

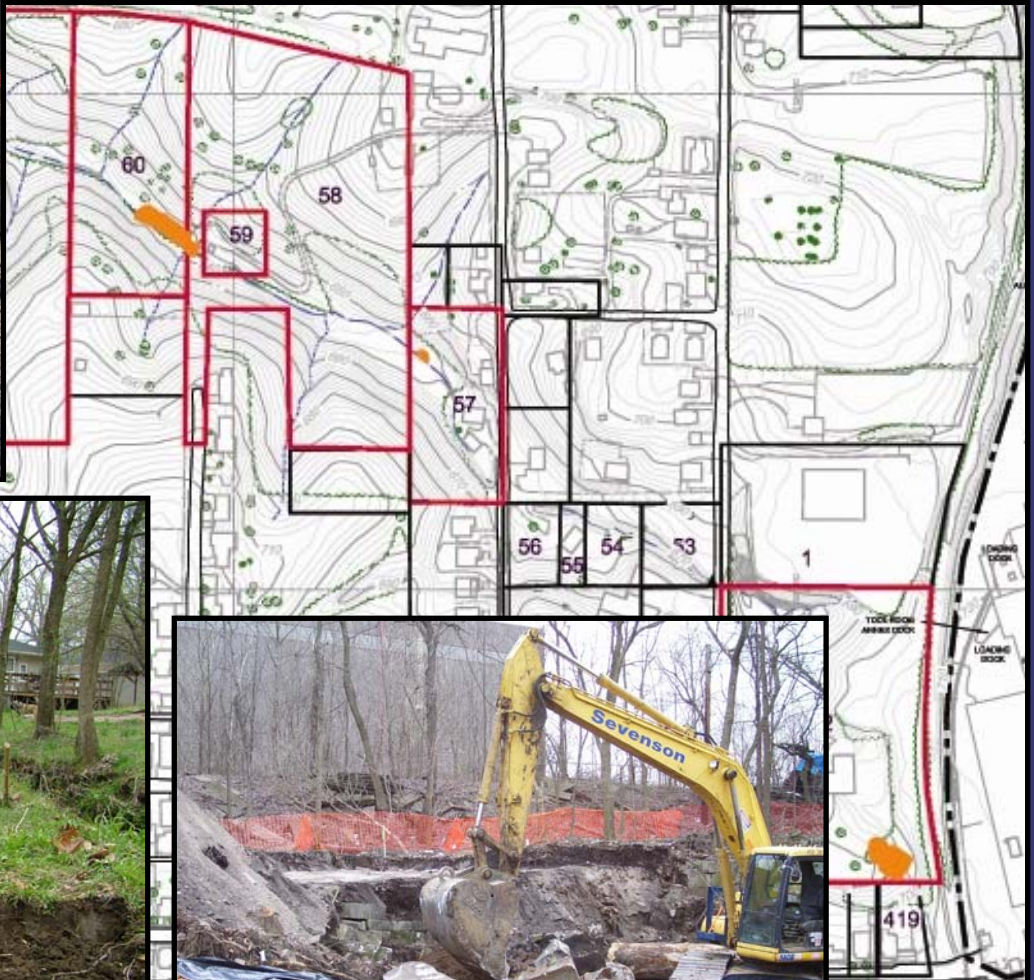




WESTERN TRIBUTARY IM

RCRA CORRECTIVE ACTION/CERCLA REMOVAL ACTION

GM POWERTRAIN BEDFORD PLANT, BEDFORD, INDIANA





WESTERN TRIBUTARY IM

RCRA CORRECTIVE ACTION/CERCLA REMOVAL ACTION

GM POWERTRAIN BEDFORD PLANT, BEDFORD, INDIANA



Western Tributary restoration



STATUS OF RCRA CORRECTIVE ACTION

RCRA CORRECTIVE ACTION/CERCLA REMOVAL ACTION

GM POWERTRAIN BEDFORD PLANT, BEDFORD, INDIANA

East Plant Area Interim Measure

- Re-use of low PCB Removal Action soil
- Select soil removal
 - >50 PPM removal completed November 21, 2006
- >50 PPM Landfill Vault
 - Cover to be placed prior to winter
- Cover System
 - Contract awarded
- Perimeter Groundwater Collection System
- AOI 8 Collection System
- Long-term maintenance and monitoring





EAST PLANT AREA IM

RCRA CORRECTIVE ACTION/CERCLA REMOVAL ACTION

GM POWERTRAIN BEDFORD PLANT, BEDFORD, INDIANA



East Plant Area Vault



EAST PLANT AREA IM

RCRA CORRECTIVE ACTION/CERCLA REMOVAL ACTION

G M P O W E R T R A I N B E D F O R D P L A N T , B E D F O R D , I N D I A N A



East Plant Area >50 Excavation

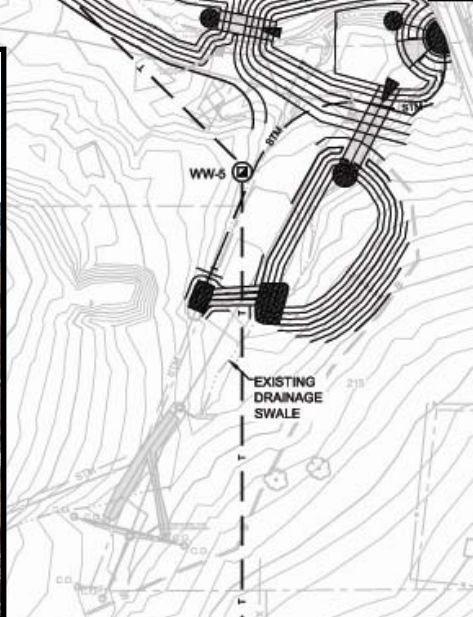
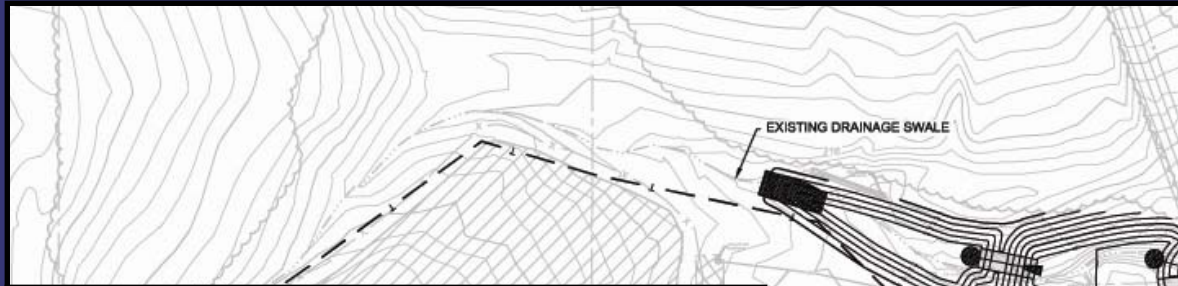


EAST PLANT AREA IM

RCRA CORRECTIVE ACTION / CERCLA REMOVAL ACTION

GM POWERTRAIN BEDFORD PLANT, BEDFORD, INDIANA

Sedimentation Ponds





COMMUNITY RELATIONS ACTIVITIES

RCRA CORRECTIVE ACTION/CERCLA REMOVAL ACTION

G M P O W E R T R A I N B E D F O R D P L A N T , B E D F O R D , I N D I A N A

- Community meetings are held on a quarterly basis
 - This set of meetings are December 6 & 7, 2006.
 - Presentations have been and will continue to be posted to the website.
 - The next community meetings are likely to be in March 2007.
 - CLP meeting will be held this Friday, December 8th.
 - People can always come to the field trailer and talk one-on-one.



COMMUNITY RELATIONS ACTIVITIES

RCRA CORRECTIVE ACTION/CERCLA REMOVAL ACTION

G M P O W E R T R A I N B E D F O R D P L A N T , B E D F O R D , I N D I A N A

- Project website at:
<http://www.BedfordPowertrainCorrectiveAction.com>
- Quarterly Community Meetings now available on the website
- GM Community Relations Contact person is Becki Akers
The toll-free number remains (866) 223-0856
- Public Information Repository (GM Plant)
Currently by appointment
- Public Information Repository (Library)
- Community Liaison Panel (CLP)
- Periodic information sessions
- Periodic Project Fact Sheets (Fourteen issued to date)
- Truck Traffic Issues: Katie Kamm – (812) 279-0977