



GM POWERTRAIN BEDFORD FACILITY BEDFORD, INDIANA

RCRA CORRECTIVE ACTION PROGRAM/REMOVAL ACTION

G M P O W E R T R A I N B E D F O R D P L A N T B E D F O R D , I N D I A N A

Welcome to the 1ST Quarter 2005 Public Information Session February 22, 2005

- History of the GM Bedford Powertrain Facility
- Overview of the project



- Facility located on 152.5 acres and is approximately 1,000,000 square feet
- Approximately 1,000 employees



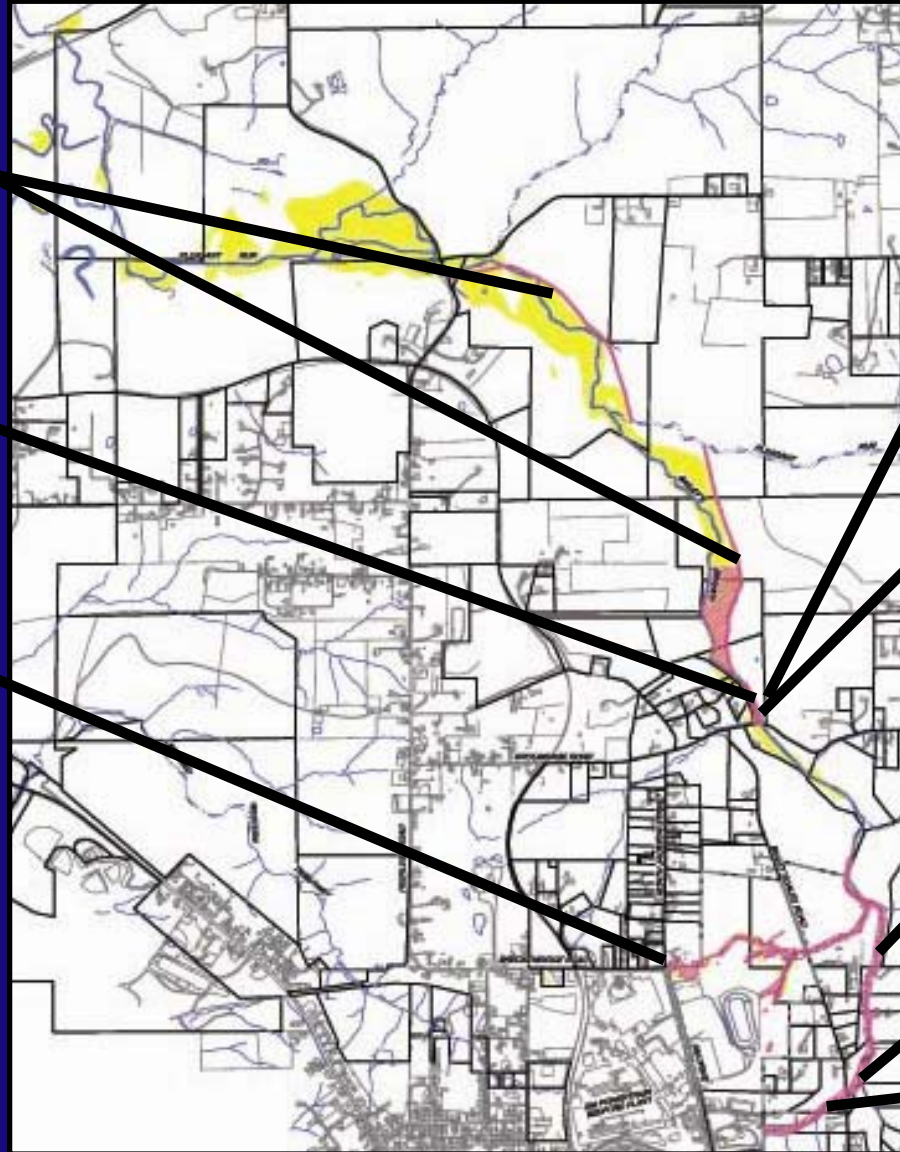
- Comprehensive Environmental Response, Compensation, and Liability Act (CERCLA) Removal Action (RA)
 - Bailey's Branch and Pleasant Run PCB cleanup of creek sediments and floodplain soil.
 - RA Elements:
 - Control of impacted springs and seeps along creeks;
 - Removal of floodplain soil to 1.8 ppm and sediment to 1 ppm in the creek



REMOVAL ACTION STATUS

RCRA CORRECTIVE ACTION PROGRAM / REMOVAL ACTION

GM POWER TRAIN BEDFORD PLANT BEDFORD, INDIANA



DIVERSION CHANNEL

EXCAVATION PARCEL 25

ROAD WORK

EXCAVATION PARCELS 23 AND 76

STORMWATER MANAGEMENT

SWALLET ROCK BREAKING

RESTORATION EAST OF BAILEY SCALES ROAD

RESTORATION WEST OF BAILEY SCALES ROAD



RESTORATION – WEST OF BAILEY SCALES ROAD

RCRA CORRECTIVE ACTION PROGRAM/REMOVAL ACTION

G M P O W E R T R A I N B E D F O R D P L A N T B E D F O R D , I N D I A N A



[BACK](#)



RESTORATION – EAST OF BAILEY SCALES ROAD

RCRA CORRECTIVE ACTION PROGRAM/REMOVAL ACTION

G M P O W E R T R A I N B E D F O R D P L A N T B E D F O R D , I N D I A N A



01/27/2005



01/27/2005

[BACK](#)



SWALLET BREAKING

RCRA CORRECTIVE ACTION PROGRAM/REMOVAL ACTION

G M P O W E R T R A I N B E D F O R D P L A N T B E D F O R D , I N D I A N A



[BACK](#)



STORMWATER MANAGEMENT

RCRA CORRECTIVE ACTION PROGRAM/REMOVAL ACTION

G M P O W E R T R A I N

E D F O R D , I N D I A N A



[BACK](#)



EXCAVATION – PARCELS 23 AND 76

RCRA CORRECTIVE ACTION PROGRAM/REMOVAL ACTION

G M P O W E R T R A I N B E D F O R D P L A N T B E D F O R D , I N D I A N A



[BACK](#)



EXCAVATION – PARCEL 25

RCRA CORRECTIVE ACTION PROGRAM/REMOVAL ACTION

G M P O W E R T R A I N B E D F O R D P L A N T B E D F O R D , I N D I A N A



[BACK](#)



DIVERSION CHANNEL

RCRA CORRECTIVE ACTION PROGRAM/REMOVAL ACTION

G M P O W E R T R A I N B E D F O R D P L A N T B E D F O R D , I N D I A N A



[BACK](#)



ROAD WORK

RCRA CORRECTIVE ACTION PROGRAM / REMOVAL ACTION

G M P O W E R T R A I N B E D F O R D P L A N T B E D F O R D , I N D I A N A



[BACK](#)



- RCRA Corrective Action

- Conducted under the Resource Conservation and Recovery Act (RCRA) Corrective Action under a performance-based agreement with the U.S. EPA Region V. The agreement was signed on March 20, 2001 and amended on October 1, 2002.
- Continuing to perform soil and groundwater investigation
- Continuing Ecological Risk Assessment
- Submitted Environmental Indicator CA 725 Report (documenting protective of human health under current conditions) on January 27, 2005



STATUS OF RCRA CORRECTIVE ACTION

RCRA CORRECTIVE ACTION PROGRAM / REMOVAL ACTION

G M P O W E R T R A I N B E D F O R D P L A N T B E D F O R D , I N D I A N A

INVESTIGATIVE ACTIVITIES: UPCOMING 2005

- Initiate and Complete RFI Addendum #8 (dye trace tests) in East Plant Area
- Initiate and Complete RFI Addendum #9 (East Plant Area, in support of CMS)
- Design and Implement Dye Trace testing at AOI 9
- Complete West Plant Area Interim Measure
 - AOI 18 – shallow excavation
 - AOI 21
 - Shallow excavation of Area 3 (near the storm grate), Area 4 (near lobby entrance) and Area 5 (near ball diamond)
 - Improving catch basin near Area 3 (northeast corner of hourly parking lot)
 - AOI 22 – shallow excavation
- Initiate and Complete Western Tributary Interim Measure
- Initiate and Complete Northern Tributary Interim Measure (including AOIs 26 and 27)



STATUS OF RCRA CORRECTIVE ACTION

RCRA CORRECTIVE ACTION PROGRAM/REMOVAL ACTION

G M P O W E R T R A I N B E D F O R D P L A N T B E D F O R D , I N D I A N A

Interim Measures (IMs) UPCOMING

- Northern Tributary and Western Tributary IMs:
 - Cleanup at each parcel will typically involve 1-2 truckloads of soil/sediment or less to be removed. Verification sampling will be completed to confirm cleanup goals are met. All disturbed areas will be restored.
 - Northern Tributary involves Parcels 381, 382, 384, 386, and 393.
 - Western Tributary involves Parcels 2, 57, 60, and 61.
- West Plant IMs:
 - Hourly Parking Lot (AOI 21)
 - Tool Room Annex Dock Release (AOI 22)
 - Area south of the piston building (AOI 18)
 - Area near the ball diamond
- South Plant Properties IMs
 - Small quantities of PCB-impacted soil to be removed from Parcels 201 and 204



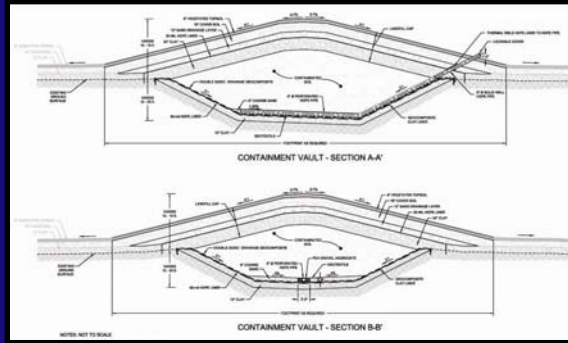
STATUS OF RCRA CORRECTIVE ACTION

RCRA CORRECTIVE ACTION PROGRAM/REMOVAL ACTION

GM POWERTRAIN BEDFORD PLANT BEDFORD, INDIANA

Corrective Measures Study

- Cover System
- Re-use of low PCB Removal Action soil
- Select soil removal
- Off-Site disposal, landfill cell, and in-place treatment
- Perimeter Groundwater Collection System
- Long-term maintenance and monitoring





COMMUNITY RELATIONS ACTIVITIES

RCRA CORRECTIVE ACTION PROGRAM/REMOVAL ACTION

G M P O W E R T R A I N B E D F O R D P L A N T B E D F O R D , I N D I A N A

- Community meetings are held on a quarterly basis
 - The last meetings were on October 27 and 28, 2004.
 - Continuing to experiment with format.
 - Presentations have been and will continue to be posted to the website.
 - The next community meetings are likely to be in May 2005.
- The next project update meeting with the Community Liaison Panel is scheduled for April 29, 2005.



COMMUNITY RELATIONS ACTIVITIES

RCRA CORRECTIVE ACTION PROGRAM / REMOVAL ACTION

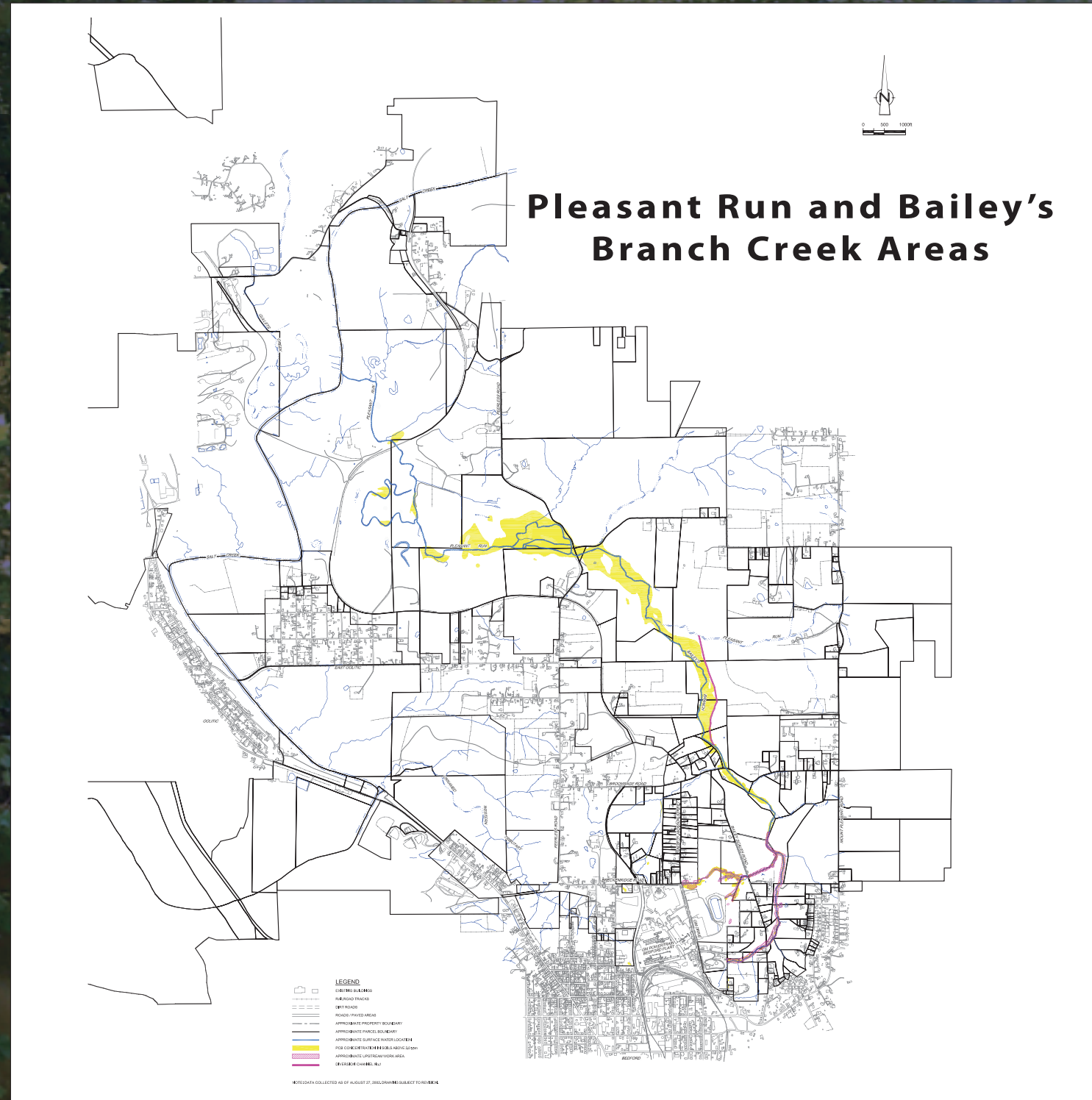
G M P O W E R T R A I N B E D F O R D P L A N T B E D F O R D , I N D I A N A

- Project website at:
<http://www.BedfordPowertrainCorrectiveAction.com>
- Quarterly Community Meetings now available on the website
- GM Community Relations Contact person is Becki Akers
The toll-free number remains (866)223-0856
- Public Information Repository (GM Plant)
Currently by appointment
- Public Information Repository (Library)
- Community Liaison Panel (CLP)
- Periodic information sessions
- Periodic Project Fact Sheets (nine issued to date)



CERCLA Removal Action Status

- The yellow areas represent the areas requiring excavation as part of the Removal Action
- The red hatched areas represent areas in which excavation has been completed or is currently underway





Removal Action

Delineation Sampling

- 3,000+ delineation samples collected over 5 miles of creek
- Creek sediments and floodplain soils sampled
- Clearing of trees in work area

Site Setup

- Mobilization, site security, site trailers
- Erosion controls
- Access roads and parking areas

Water Control

- Soil berms and swales to route clean water around work areas
- Water within work areas contained and collected
- Potentially impacted water treated prior to discharge
- Constructed temporary on-site wastewater treatment facility to treat water prior to discharge

Excavation

- Dust and erosion control measures in place prior to excavation
- Creek sediments and soil above cleanup criteria excavated
- Controls maintained until restoration complete

Soil Pile

- Excavated material managed in a contained area pending shipment for off-site disposal

Verification Sampling

- Creek and floodplain sampled to ensure cleanup criteria are met
- Additional excavation completed, if necessary, and additional verification samples collected

Restoration

- Areas backfilled to generally match pre-existing conditions
- Vegetation re-established
- Habitat features added to creek and floodplain

Delineation Sampling



Site Setup



Water Control



Soil Pile



Verification Sampling



Restoration



Excavation





Local Haul Road Use and Maintenance

During the planning stages for the Removal Action work, GM recognized the potential to degrade and damage local roads used for hauling soil to and from the work areas. To minimize this damage, GM developed a plan for monitoring and maintaining these haul roads during the course of this project. GM is also...

- Working closely with members of the County Road Commission
- Using approved haul routes for truck traffic
- Inspecting approved haul routes regularly
- Continuing to repair roads as necessary
- Addressing input from the community

In an effort to reduce the impact on the local roads, GM is...

- Actively looking for local borrow sources in order to reduce use of local roads
- Evaluating an upgrade of the Peerless Road Bridge to accommodate truck traffic
- Looking at using temporary roads to the extent practical so we do not go on the paved public roads

GM recognizes the need to control project related traffic congestion and drive in a safe manner. Therefore we are...

- Developing, communicating and enforcing approved truck routes with our contractors based on road and traffic conditions
- Communicating our truck routes with the local road commissions
- Gathering information on local bus routes and schedules to control congestion along these routes
- Monitoring adherence of plans and traffic safety by our contractors
- Posting signs and flagmen near work areas

Do you have questions or comments?
Call Becki Akers toll free at 1-866-223-9856



Damaged Road Shoulder



Repaired Roadway



Repairs Performed by Specialized Contractors



Repairs in Progress



Repaired Roadway



Repairs in Progress



Bedford Powertrain
Corrective Action/Removal Action

GOVERNMENT REGULATORY AGENCY TEAM

United States Environmental Protection Agency (U.S. EPA)

- **RCRA Corrective Action**
Mr. Peter Ramanauskas
(312) 886-7890
- **CERCLA Removal Action**
Mr. Brad Stimple
(440) 250-1717



Indiana Department of Environmental Management (IDEM)

- **Mr. Gerald O'Callaghan**
(317) 233-1522

